

8100 SB HF 1 Zyklop Metal Ratchet Set with switch lever, 3/8" drive, with holding function, metric, 13 pieces  
Innovations and Autumn/Winter Campaign 2018/2019



<b>EAN:</b>	4013288195081	<b>Size:</b>	260x105x50 mm
<b>Part number:</b>	05003785001	<b>Weight:</b>	1285 g
<b>Article number:</b>	8100 SB HF 1	<b>Country of origin:</b>	CZ
		<b>Customs tariff number:</b>	82041100



- Extremely slim ratchet with long lever
- Very robust without any restrictions on torque
- Return angle of only 5°
- Convenient direction change thanks to switchover lever
- Take it easy tool finder with colour coding according to sizes

**Web link**

[https://products.wera.de/en/zyklop\\_ratchets\\_and\\_accessories\\_the\\_zyklop\\_ratchets\\_the\\_zyklop\\_ratchets\\_3\\_8\\_the\\_zyklop\\_metal\\_ratchets\\_switch\\_3\\_8\\_8100\\_sb\\_hf\\_1.html](https://products.wera.de/en/zyklop_ratchets_and_accessories_the_zyklop_ratchets_the_zyklop_ratchets_3_8_the_zyklop_metal_ratchets_switch_3_8_8100_sb_hf_1.html)

Wera - 8100 SB HF 1  
05003785001 - 4013288195081

Wera Werkzeuge GmbH  
Korzter Straße 21-25  
D-42349 Wuppertal  
Tel: +49 (0)2 02 / 40 45-0  
E-Mail: info@wera.de

Incredibly compact set arrangement with many tools in a minimum of space. A completely new ratchet set feeling thanks to the unique textile boxes that are very robust and durable. They can be positioned upright for tidy storage on the workshop shelf. Additional surface protection due to textile outer material. Low weight and volume for simpler mobility. "Take it easy" Tool Finder with colour coding according to sizes.

**Web link**

[https://products.wera.de/en/zyklus\\_ratchets\\_and\\_accessories\\_the\\_zyklus\\_ratchets\\_the\\_zyklus\\_ratchets\\_3\\_8\\_the\\_zyklus\\_metal\\_ratchets\\_switch\\_3\\_8\\_8100\\_sb\\_hf\\_1.html](https://products.wera.de/en/zyklus_ratchets_and_accessories_the_zyklus_ratchets_the_zyklus_ratchets_3_8_the_zyklus_metal_ratchets_switch_3_8_8100_sb_hf_1.html)

Wera - 8100 SB HF 1  
05003785001 - 4013288195081

Wera Werkzeuge GmbH  
Korzter Straße 21-25  
D-42349 Wuppertal  
Tel: +49 (0)2 02 / 40 45-0  
E-Mail: [info@wera.de](mailto:info@wera.de)

### Zyklop Metal Switch



Due to the ever-more confined working environment, space is becoming more and more an issue for the application of ratchets. Our product developers therefore intensively occupied themselves with the issue of confined working spaces, and Wera has now solved this problem. The extremely slim and robust Zyklop Metal ratchet with a long lever was what emerged. When the change in direction needs to be quick, the Zyklop Metal Switch ratchet is the right tool. When the socket must not get lost and a coincidental change of direction has to be avoided at all cost, the Zyklop Metal Push is the correct choice.

### Slim design



Forged, full metal ratchet (chrome-molybdenum) that is extremely robust with a long service life; slim design to enable work in very confined spaces.

### Reversible



Switch lever for convenient change of direction.

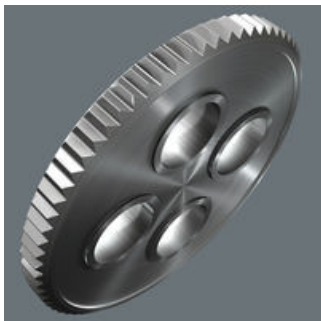
#### Web link

[https://products.wera.de/en/zyklop\\_ratchets\\_and\\_accessories\\_the\\_zyklop\\_ratchets\\_the\\_zyklop\\_ratchets\\_3\\_8\\_the\\_zyklop\\_metal\\_ratchets\\_switch\\_3\\_8\\_8100\\_sb\\_hf\\_1.html](https://products.wera.de/en/zyklop_ratchets_and_accessories_the_zyklop_ratchets_the_zyklop_ratchets_3_8_the_zyklop_metal_ratchets_switch_3_8_8100_sb_hf_1.html)

Wera - 8100 SB HF 1  
05003785001 - 4013288195081

Wera Werkzeuge GmbH  
Korzter Straße 21-25  
D-42349 Wuppertal  
Tel: +49 (0)2 02 / 40 45-0  
E-Mail: [info@wera.de](mailto:info@wera.de)

**Small return angle**



Fine-pitched with 72 teeth for a return angle of only 5°

**Sockets with retaining function for hexagon headed bolts, screws and nuts**



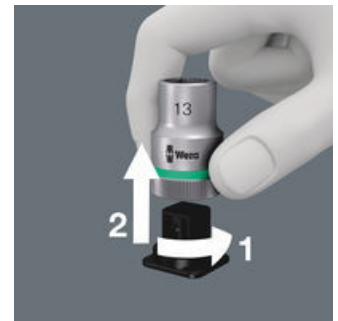
The clamping of the screw is achieved by a twin spring loaded ball retention system. The tubing is effectively protected against mechanical wear and tear by a steel ring. The holding function is especially helpful in confined, hard-to-reach spaces, where there is no room for a second hand to secure the screw.

**Nut extractor tool**



This tool enables hexagon nuts to be easily removed from sockets with holding function.

**Secure hold and easy removal**



The all new smooth turning mechanism guarantees both secure and rattle-free storage, yet allows easy removal of the tool.

**Web link**

[https://products.wera.de/en/zyklop\\_ratchets\\_and\\_accessories\\_the\\_zyklop\\_ratchets\\_the\\_zyklop\\_ratchets\\_3\\_8\\_the\\_zyklop\\_metal\\_ratchets\\_switch\\_3\\_8\\_8100\\_sb\\_hf\\_1.html](https://products.wera.de/en/zyklop_ratchets_and_accessories_the_zyklop_ratchets_the_zyklop_ratchets_3_8_the_zyklop_metal_ratchets_switch_3_8_8100_sb_hf_1.html)

Wera - 8100 SB HF 1  
05003785001 - 4013288195081

Wera Werkzeuge GmbH  
Korzerter Straße 21-25  
D-42349 Wuppertal  
Tel: +49 (0)2 02 / 40 45-0  
E-Mail: info@wera.de