

8003 A Zyklus Metal Ratchet with push-through square and 1/4" drive, 1/4" x 141 mm

The Zyklus Ratchets, 1/4"



EAN: 4013288174017

Part number: 05004003001

Article number: 8003 A

Size: 227x55x21 mm

Weight: 129 g

Country of origin: CZ

Customs tariff number: 82041100



- Forged, full metal ratchet (chrome-molybdenum) that is extremely robust with a long service life; slim design to enable work in very confined spaces.
- The dual-ratchet-teeth design means that a 76 fine-tooth division can be achieved from the 38 robust teeth with a return angle of only 4.7°.
- Absolutely smooth switchover of the non-detachable push-through square
- For 1/4" square sockets with ball lock
- Very robust without any restrictions on torque

Zyklus Metal ratchet with push-through square. Slim design for work in even very confined spaces. The dual ratchet teeth design makes a 76 fine-pitched toothing out of 38 robust teeth that allows a return angle of only 4.7°. Very simple direction change by actuating the non-detachable push-through square; for the first time also with secure socket locking function. Forged, full metal ratchet (chrome-molybdenum steel) for particularly high robustness and long service life.

Web link

https://products.wera.de/en/tools_for_the_aerospace_segment_ratchets_the_zyklus_ratchets_1_4_8003_a.html

Wera - 8003 A

05004003001 - 4013288174017

Wera Werkzeuge GmbH

Korzer Straße 21-25

D-42349 Wuppertal

Tel: +49 (0)2 02 / 40 45-0

E-Mail: info@wera.de

8003 A Zyklop Metal Ratchet with push-through square and 1/4" drive, 1/4" x 141 mm

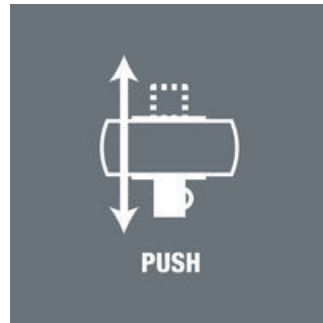
The Zyklop Ratchets, 1/4"



Zyklop Metal Push



Due to the ever-more confined working environment, space is becoming more and more an issue for the application of ratchets. Our product developers therefore intensively occupied themselves with the issue of confined working spaces, and Wera has now solved this problem. The extremely slim and robust Zyklop Metal ratchet with a long lever was what emerged. When the socket must not get lost and a coincidental change of direction has to be avoided at all cost, the Zyklop Metal Push is the correct choice.



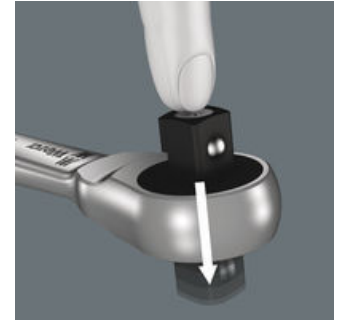
Due to the ever-more confined working environment, space is becoming more and more an issue for the application of ratchets. Our product developers therefore intensively occupied themselves with the issue of confined working spaces, and Wera has now solved this problem. The extremely slim and robust Zyklop Metal ratchet with a long lever was what emerged. When the socket must not get lost and a coincidental change of direction has to be avoided at all cost, the Zyklop Metal Push is the correct choice.

Slim design



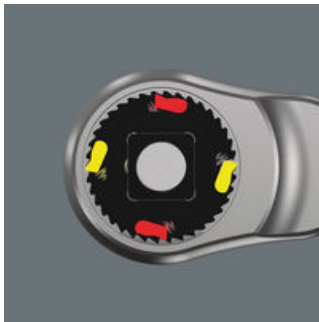
Forged, full metal ratchet (chrome-molybdenum) that is extremely robust with a long service life; slim design to enable work in very confined spaces.

Square drive



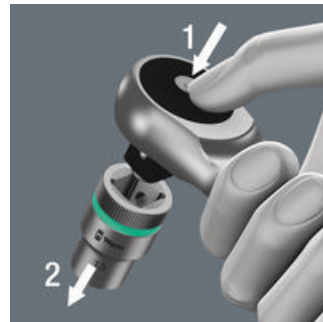
Smooth push-through mechanism, that cannot get lost.

Dual ratchet teeth



The dual-ratchet-teeth design means that a 76 fine-toothed division can be achieved from the 38 robust teeth with a return angle of only 4.7°.

Ball lock



The ball lock ensures sockets and accessories are securely fitted, providing increased safety during operation. A short press on the release button allows the tool to be changed quickly.

Web link

https://products.wera.de/en/tools_for_the_aerospace_segment_ratchets_the_zyklop_ratchets_1_4_8003_a.html





Wera - 8003 A
05004003001 - 4013288174017

Wera Werkzeuge GmbH
Korzerter Straße 21-25
D-42349 Wuppertal
Tel: +49 (0)2 02 / 40 45-0
E-Mail: info@wera.de

8003 A Zyklop Metal Ratchet with push-through square and 1/4" drive, 1/4" x 141 mm
The Zyklop Ratchets, 1/4"



Further versions in this product family:

				
		mm	mm	mm
05004003001	1/4"	141	21	22

Web link

https://products.wera.de/en/tools_for_the_aerospace_segment_ratchets_the_zyklop_ratchets_1_4_8003_a.html

Wera - 8003 A

05004003001 - 4013288174017

Wera Werkzeuge GmbH

Korzerter Straße 21-25

D-42349 Wuppertal

Tel: +49 (0)2 02 / 40 45-0

E-Mail: info@wera.de