

8100 SA 11 Zyklop Metal Ratchet Set with switch lever, 1/4" drive, imperial, 28 pieces
The Zyklop Ratchets, 1/4"



EAN: 4013288173850
Part number: 05004021001
Article number: 8100 SA 11

Size: 205x90x55 mm
Weight: 680 g
Country of origin: CZ
Customs tariff number: 82041100

- Extremely slim ratchet with long lever
- Very robust without any restrictions on torque
- Return angle of only 5°
- Convenient direction change thanks to switchover lever
- Take it easy tool finder with colour coding according to sizes

Incredibly compact set arrangement with many tools in a minimum of space. A completely new ratchet set feeling thanks to the unique textile boxes that are very robust and durable. They can be positioned upright for tidy storage on the workshop shelf. Additional surface protection due to textile outer material. Low weight and volume for simpler mobility. "Take it easy" Tool Finder with colour coding according to sizes.

Web link

https://products.wera.de/en/tools_for_the_aerospace_segment_ratchets_the_zyklop_ratchets_1_4_8100_sa_11.html

Wera - 8100 SA 11
05004021001 - 4013288173850



8100 SA 11 Zyklop Metal Ratchet Set with switch lever, 1/4" drive, imperial, 28 pieces
The Zyklop Ratchets, 1/4"



Set contents:



8790 HMA

05003514001 1 x 3/16" x 23 mm
 05003515001 1 x 7/32" x 23 mm
 05003516001 1 x 1/4" x 23 mm
 05003517001 1 x 9/32" x 23 mm
 05003518001 1 x 5/16" x 23 mm
 05003519001 1 x 11/32" x 23 mm
 05003520001 1 x 3/8" x 23 mm
 05003521001 1 x 7/16" x 23 mm
 05003522001 1 x 1/2" x 23 mm



8794 LA

05003526001 1 x 1/4" x 150 mm



8794 A

05003527001 1 x 1/4" x 56 mm



8784 A1

05003529001 1 x 1/4" x 1/4" x 37 mm



851/1 Z PH

05072070001 1 x PH 1 x 25 mm
 05072072001 1 x PH 2 x 25 mm
 05072074001 1 x PH 3 x 25 mm



867/1 TORX®

05066485001 1 x TX 10 x 25 mm
 05066486001 1 x TX 15 x 25 mm
 05066487001 1 x TX 20 x 25 mm
 05066488001 1 x TX 25 x 25 mm
 05066489001 1 x TX 27 x 25 mm
 05066490001 1 x TX 30 x 25 mm



840/1 Z Hex-Plus

05135074001 1 x 5/32" x 25 mm
 05135075001 1 x 3/16" x 25 mm
 05135076001 1 x 1/4" x 25 mm
 05135079001 1 x 7/32" x 25 mm

Web link

https://products.wera.de/en/tools_for_the_aerospace_segment_ratchets_the_zyklop_ratchets_1_4_8100_sa_11.html

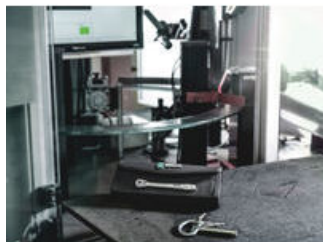
Wera - 8100 SA 11
 05004021001 - 4013288173850

Wera Werkzeuge GmbH
 Korzter Straße 21-25
 D-42349 Wuppertal
 Tel: +49 (0)2 02 / 40 45-0
 E-Mail: info@wera.de

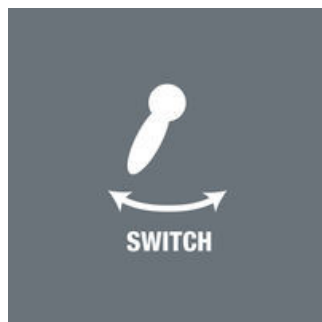
8100 SA 11 Zyklop Metal Ratchet Set with switch lever, 1/4" drive, imperial, 28 pieces
The Zyklop Ratchets, 1/4"



Zyklop Metal Switch



Due to the ever-more confined working environment, space is becoming more and more an issue for the application of ratchets. Our product developers therefore intensively occupied themselves with the issue of confined working spaces, and Wera has now solved this problem. The extremely slim and robust Zyklop Metal ratchet with a long lever was what emerged. When the change in direction needs to be quick, the Zyklop Metal Switch ratchet is the right tool. When the socket must not get lost and a coincidental change of direction has to be avoided at all cost, the Zyklop Metal Push is the correct choice.



Due to the ever-more confined working environment, space is becoming more and more an issue for the application of ratchets. Our product developers therefore intensively occupied themselves with the issue of confined working spaces, and Wera has now solved this problem. The extremely slim and robust Zyklop Metal ratchet with a long lever was what emerged. When the change in direction needs to be quick, the Zyklop Metal Switch ratchet is the right tool. When the socket must not get lost and a coincidental change of direction has to be avoided at all cost, the Zyklop Metal Push is the correct choice.

Slim design



Forged, full metal ratchet (chrome-molybdenum) that is extremely robust with a long service life; slim design to enable work in very confined spaces.

Reversible



Switch lever for convenient change of direction.

Web link

https://products.wera.de/en/tools_for_the_aerospace_segment_ratchets_the_zyklop_ratchets_1_4_8100_sa_11.html

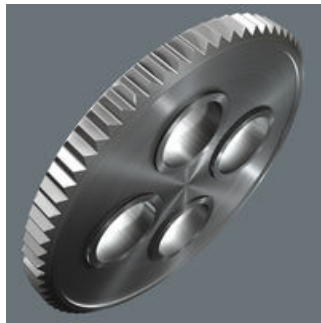
Wera - 8100 SA 11
05004021001 - 4013288173850

Wera Werkzeuge GmbH
Korzerter Straße 21-25
D-42349 Wuppertal
Tel: +49 (0)2 02 / 40 45-0
E-Mail: info@wera.de

8100 SA 11 Zyklop Metal Ratchet Set with switch lever, 1/4" drive, imperial, 28 pieces
The Zyklop Ratchets, 1/4"



Small return angle



Fine-pitched with 72 teeth for a return angle of only 5°

"Take it easy" tool finder system



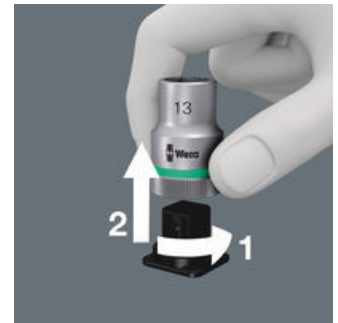
"Take it easy" tool finder system - with profile and size colour-coding for quick and easy tool selection. Colour-coded system for hexagon drive screws (L-Keys, Zyklop bit sockets), external hex drive screws and nuts (Joker wrenches, Zyklop sockets and Zyklop bit sockets with holding function), and TORX® drive screws (L-Keys, Zyklop bit sockets).

Textile boxes



The textile boxes offer dramatically improved portability, and are space-saving to boot! This means you can now carry the same collection of tools, in a much more compact and comfortable package. The hassle of running back and forth for the right tools has now become a thing of the past. And the much lower weight of a set makes carrying more convenient than ever before. The textile box including the tool will even survive a fall undamaged.

Secure hold and easy removal



The all new smooth turning mechanism guarantees both secure and rattle-free storage, yet allows easy removal of the tool.

Web link

https://products.wera.de/en/tools_for_the_aerospace_segment_ratchets_the_zyklop_ratchets_1_4_8100_sa_11.html

Wera - 8100 SA 11
05004021001 - 4013288173850

Wera Werkzeuge GmbH
Körzter Straße 21-25
D-42349 Wuppertal
Tel: +49 (0)2 02 / 40 45-0
E-Mail: info@wera.de