



EAN: 4013288223289
Part number: 05005490001
Article number: Socket Rail C Impaktor 1

Size: 375x110x35 mm
Weight: 1087 g
Country of origin: TW
Customs tariff number: 82042000

- 9-piece socket set on socket rail, 1/2"
- Rail with secure socket mounting and yet easy removal (twist-to-unlock) for temporary attachment on wall, shelf or workshop trolley
- Smooth Twist to Unlock mechanism for a secure fit and simple removal of the sockets
- For use with electric or pneumatic powered impact wrenches with 12.5mm = 1/2" drive
- Impaktor technology for above-average service life
- Hexagonal profile enables precise and profile-preserving screwdriving with high power transmission
- With cross-bore and ring socket for securing locking pin and locking ring of machine-operated tools

Socket rail with 9 Impaktor sockets for use with electric or pneumatic wrenches with 12.5 mm = 1/2" drive. The Impaktor technology ensures a higher-than-average service life even at extreme requirements. The hexagon profile used allows a high power transmission while simultaneously being precise and protecting the profile. With Take it easy tool finder with colour coding by size - to help you find the required tool quickly and easily. The rail allows temporary attachment to metallic surfaces and, with its twist-to-unlock function, ensures secure locking and unlocking of the sockets.



Web link

https://products.wera.de/en/ratchets_and_accessories_the_zyklop_ratchets_the_zyklop_ratchets_1_2_zyklop_accessories_1_2_socket_rail_c_impaktor_1.html

Wera - Socket Rail C Impaktor 1
05005490001 - 4013288223289

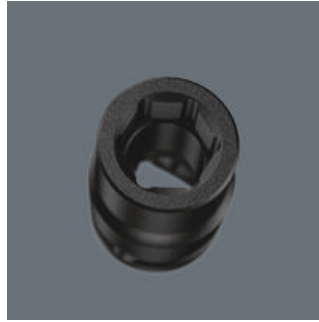
Wera Werkzeuge GmbH
Korzerter Straße 21-25
D-42349 Wuppertal
Tel: +49 (0)2 02 / 40 45-0
E-Mail: info@wera.de

For electric or pneumatic impact wrenches



The Impaktor technology ensures above-average service life of the Impaktor socket wrench plug-ins even under extreme conditions.

Profile-friendly power transmission



The hexagon profile allows the transmission of high forces and puts less strain on the edges of bolts or screw heads than a double hexagon profile. Fine-toothed ratchets also make the use of a double hexagon profile superfluous, even in confined spaces, thanks to their small return angle.

Cross-bore and ring socket



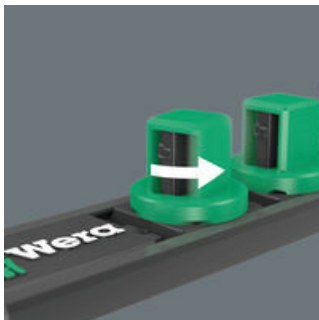
Due to the groove and the ring socket, the tool can be secured with a locking pin or O-ring on the power tool.

Take it easy tool finder system



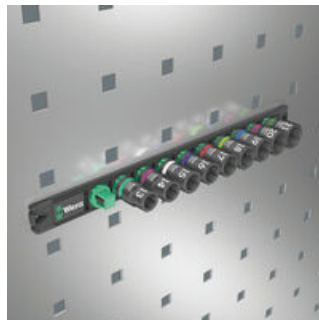
Take it easy tool finder system - with profile and size colour-coding for quick and easy tool selection. Colour-coded system for hexagon drive screws (L-Keys, Zyklop bit sockets), external hex drive screws and nuts (Joker wrenches, Zyklop sockets and Zyklop bit sockets with holding function), and TORX® drive screws (L-Keys, Zyklop bit sockets).

Twist-to-unlock mechanism



With its twist-to-unlock mechanism the socket rail ensures easy access of the sockets. At the same time the sockets are held securely.

Magnetic



Thanks to the magnet, the rail is suitable for temporary attachment to the wall, shelf or workshop trolley.

Web link

https://products.wera.de/en/ratchets_and_accessories_the_zyklop_ratchets_the_zyklop_ratchets_1_2_zyklop_accessories_1_2_socket_rail_c_impaktor_1.html

Wera - Socket Rail C Impaktor 1
05005490001 - 4013288223289

Wera Werkzeuge GmbH
Korzerter Straße 21-25
D-42349 Wuppertal
Tel: +49 (0)2 02 / 40 45-0
E-Mail: info@wera.de

Magnetic socket rail C Impaktor 1 socket set, 1/2" drive, 9 pieces

Zyklop Accessories, 1/2"



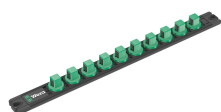
Set contents:

8790 C Impaktor socket with 1/2" drive, 13 x 38 mm



| | | |
|-------------|----|------------|
| 05004570001 | 1x | 13 x 38 mm |
| 05004571001 | 1x | 14 x 38 mm |
| 05004572001 | 1x | 15 x 38 mm |
| 05004573001 | 1x | 16 x 38 mm |
| 05004574001 | 1x | 17 x 38 mm |
| 05004575001 | 1x | 18 x 38 mm |
| 05004576001 | 1x | 19 x 38 mm |
| 05004577001 | 1x | 20 x 38 mm |
| 05004578001 | 1x | 21 x 38 mm |

9602 Magnetic socket rail, 1/2", empty, 30 x 370 mm



| | | |
|-------------|----|-------------|
| 05136422001 | 1x | 30 x 370 mm |
|-------------|----|-------------|

Web link

https://products.wera.de/en/ratchets_and_accessories_the_zyklop_ratchets_the_zyklop_ratchets_1_2_zyklop_accessories_1_2_socket_rail_c_impaktor_1.html

Wera - Socket Rail C Impaktor 1
05005490001 - 4013288223289

Wera Werkzeuge GmbH
Korzerter Straße 21-25
D-42349 Wuppertal
Tel: +49 (0)2 02 / 40 45-0
E-Mail: info@wera.de