



## SINGLE PIECE STRUT CLAMP FOR CABLE/CONDUIT, 2.72"–3.5" OD, 3" EMT 3" RIGID

### CATALOG NUMBER

**SCH56B**



### CERTIFICATIONS



### FEATURES

One-piece cable/conduit clamp with protective boot

No screws or bolts to drop

Requires only a screwdriver or nutdriver for installation

Fits into open side of strut channel

FM® Specification Tested (from 1/2" to 4" of EMT Conduit Size)

### PRODUCT ATTRIBUTES

Material: Steel

Finish: Electrogalvanized

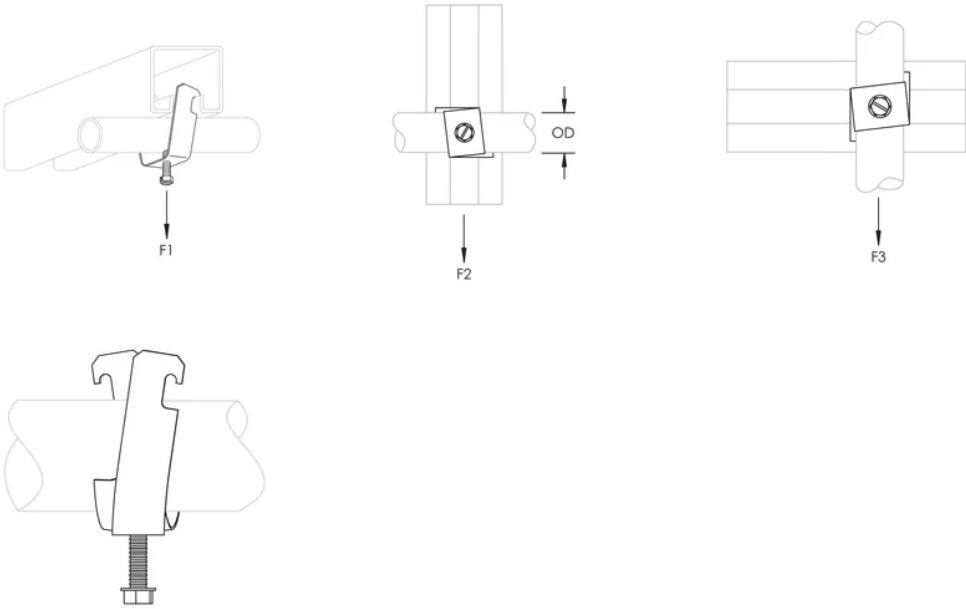
Outer Diameter: 2.720" – 3.500"

EMT Conduit Size: 3"

Rigid Conduit/Pipe Size: 3"

Static Load 1: 350 lb
Ultimate Static Load 2: 75 lb
Ultimate Static Load 3: 50 lb

DIAGRAMS



WARNING

nVent products shall be installed and used only as indicated in nVent's product instruction sheets and training materials. Instruction sheets are available at [www.nvent.com](http://www.nvent.com) and from your nVent customer service representative. Improper installation, misuse, misapplication or other failure to completely follow nVent's instructions and warnings may cause product malfunction, property damage, serious bodily injury and death and/or void your warranty.

<b>North America</b> +1.800.753.9221 Option 1 – Customer Care Option 2 – Technical Support	<b>Europe</b> Netherlands: +31 800-0200135 France: +33 800 901 793	<b>Europe</b> Germany: 800 1890272 Other Countries: +31 13 5835404	<b>APAC</b> Shanghai: + 86 21 2412 1618/19 Sydney: +61 2 9751 8500
---	--	--	--