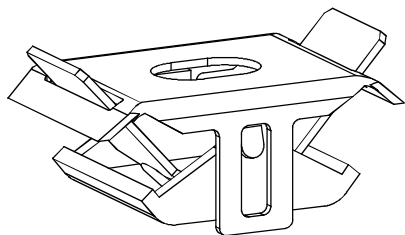


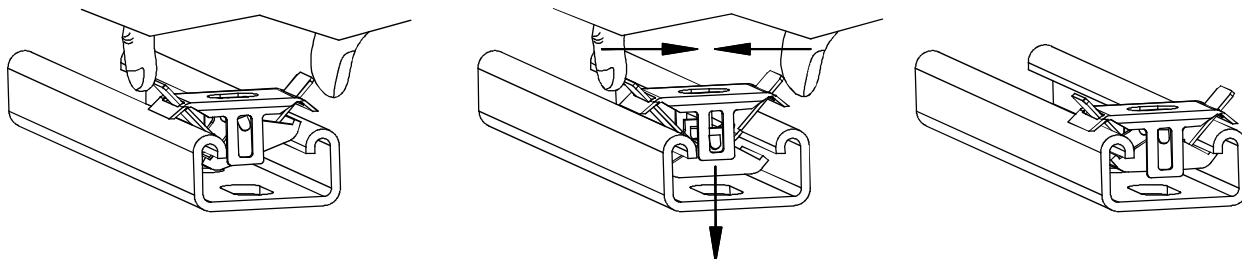
CADDY® SLICK NUT

FEATURES

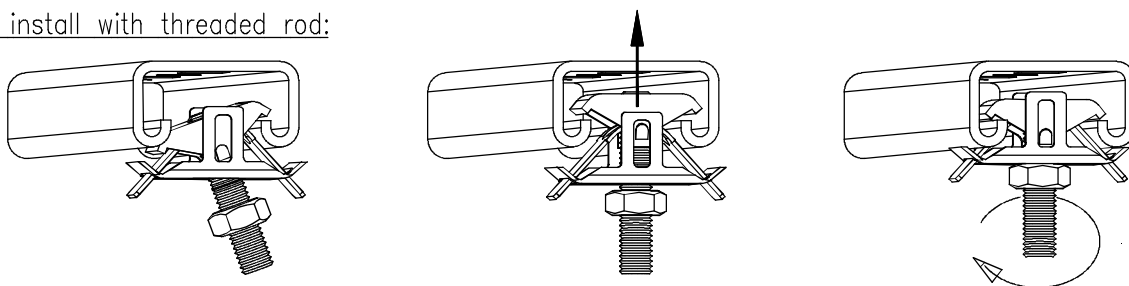
1. Easy to mount – one hand installation.
2. No springs or washers required.
3. Allows threaded rod to be installed after positioning of the CADDY SLICK NUT.
4. One size fits all strut depths.



To install:

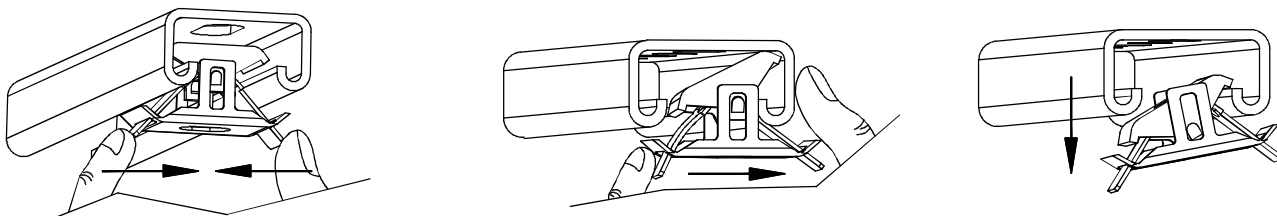


To install with threaded rod:



See Recommended Torque
in table on sheet 2

To remove:



WARNING:

1. ERICO products shall be installed and used only as indicated in ERICO product instruction sheets and training materials. Instruction sheets are available at www.erico.com and from your ERICO customer service representative.
2. ERICO products must never be used for a purpose other than the purpose for which they were designed or in a manner that exceeds specified load ratings.
3. All instructions must be completely followed to ensure proper and safe installation and performance.
4. Improper installation, misuse, misapplication or other failure to completely follow ERICO's instructions and warnings may cause product malfunction, property damage, serious bodily injury and death.
5. Products that are manufactured using spring steel components shall be used only in a non-corrosive indoor environment.
6. All pipe supports, hangers, intermediate components and structural attachments must ONLY be used as described herein and are NEVER to be used for any other purpose.

NOTE: All load ratings are for static conditions and do not account for dynamic loading such as wind, water or seismic loads, unless otherwise noted.

The customer is responsible for:

- a. Conformance to all governing codes.
- b. The integrity of structures to which the products are attached, including their capability of safely accepting the loads imposed, as evaluated by a qualified engineer.
- c. Using appropriate industry standard hardware as noted above.

SAFETY INSTRUCTIONS: All governing codes and regulations and those required by the job site must be observed. Always use appropriate safety equipment such as eye protection, hard hat, and gloves as appropriate to the application.

CADDY, CADWELD, CRITEC, ERICO, ERIFLEX, ERITECH and LENTON are registered trademarks of ERICO International Corporation.



TECHNICAL SUPPORT:
www.erico.com

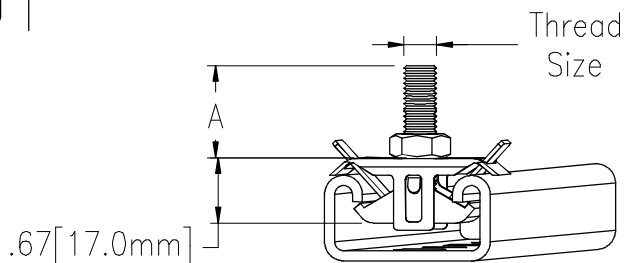
CFS303_E

1 of 2

© 2000,2004,2014 ERICO International Corporation

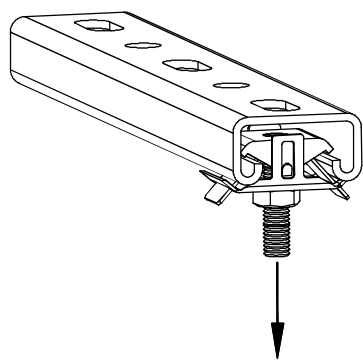
ERICO®

CADDY® SLICK NUT

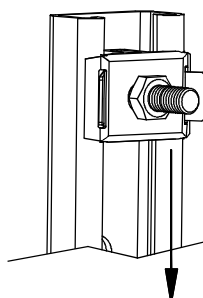


Part Number	Article Number	Thread Size	A		Recommended Torque		F1	
			in	mm	ft-lb	N-m	lbs	N
SLICK250	Not Applicable	1/4"	Not Applicable		4	6	400	1800
SLICK375		3/8"			10	14	600	2700
SLICK500		1/2"			10	14	600	2700
SLICKM6	174460	M6			4	6	400	1800
SLICKM8	174340	M8			6	8	600	2700
SLICKM10	174350	M10			10	14	600	2700
SLICKM12	174550	M12			10	14	600	2700
SLICKM8050	174360	M8	1.30	33.0	6	8	600	2700
SLICKM8070	174370	M8	2.08	53.0	6	8	600	2700
SLICKM8090	174380	M8	2.87	73.0	6	8	600	2700
SLICKM10050	174410	M10	1.30	33.0	10	14	600	2700
SLICKM10070	174420	M10	2.08	53.0	10	14	600	2700
SLICKM10090	174430	M10	2.87	73.0	10	14	600	2700

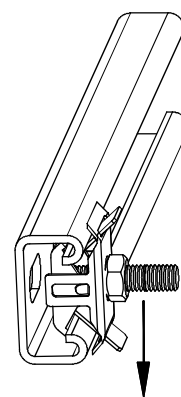
Static Loads:
 (Applicable for 14ga[2.0mm] and 12ga[2.5mm] strut)



F1
See Table



F2
100lb
450N



F3
250lb
1100N

