



FALL HEATING SPECIAL EDITION

HEATING | SERVICE TOOLS | ELECTRICAL | SPECIALTY ITEMS | CLEANERS



SERVING THE NORTH AMERICAN
HVAC/R INDUSTRY FOR OVER 40 YEARS

2017/18

Fireplace Forged Gas Ball Valves

- Brass ball valves
- Red wing handle
- 600 WOG



| Brass Indoor | Plated Outdoor | Description | Case Qty. |
|------------------|-------------------|---------------------------|-----------|
| 06-FGV38 | 06-FGV38P | 3/8" FNPT x 3/8" FNPT | 5 |
| 06-FGV12 | 06-FGV12P | 1/2" FNPT x 1/2" FNPT | 5 |
| 06-FGV34 | 06-FGV34P | 3/4" FNPT x 3/4" FNPT | 5 |
| 06-FGV1 | 06-FGV1P | 1" FNPT x 1" FNPT | 2 |
| - | 06-FGV114P | 1 1/4" FNPT x 1 1/4" FNPT | 2 |
| 06-FGV112 | 06-FGV112P | 1 1/2" FNPT x 1 1/2" FNPT | 2 |
| - | 06-FGV2P | 2" FNPT x 2" FNPT | 2 |



Fireplace Forged Gas Ball Valves

- Brass ball valves
- Red wing handle
- 600 WOG



| Brass Indoor | Description | Case Qty. |
|------------------|-----------------------------|-----------|
| 06-FP1238 | 1/2" FNPT x 3/8" Male flare | 10 |
| 06-FP1212 | 1/2" FNPT x 1/2" Male flare | 10 |

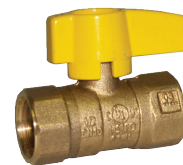


Appliance Forged Gas Ball Valves

- Brass ball valves
- Red wing handle
- 600 WOG



| Brass Indoor | Description | Case Qty. |
|-----------------|----------------------------------|-----------|
| 06-GWH12 | 1/2" FNPT x 1/2" FNPT, 3/8" port | 10 |
| 06-GWH34 | 3/4" FNPT x 3/4" FNPT, 1/2" port | 10 |

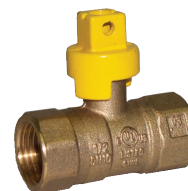


Appliance Forged Gas Ball Valves

- Brass ball valves
- Yellow flat head
- 600 WOG



| Brass Indoor | Description | Case Qty. |
|------------------|----------------------------------|-----------|
| 06-FHGV12 | 1/2" FNPT x 1/2" FNPT, 3/8" port | 12 |
| 06-FHGV34 | 3/4" FNPT x 3/4" FNPT, 1/2" port | 12 |



Boiler Drain Valves

Forged Boiler Gate Valves

- Forged drain valves
- Green Handle



| Brass Indoor | Description | Case Qty. |
|-----------------|-------------------|-----------|
| 06-BGV12 | 1/2" MNPT x Hose. | 5 |
| 06-BGV34 | 3/4" MNPT x Hose. | 5 |

Water Valves

Brass Wlided Ball Valves

- Full Port
- Female sweat connection
- 600 WOG
- Green lever handle



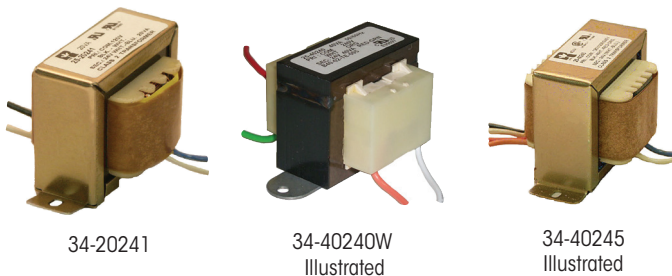
| Brass Indoor | Description | Case Qty. |
|-----------------|--------------------------|-----------|
| 06-SWV12 | 1/2" Sweat x 1/2" Sweat. | 5 |
| 06-SWV34 | 3/4" Sweat x 3/4" Sweat. | 5 |

Features

- Compact superior design.
- Individually boxed with instructions.
- Includes necessary mounting hardware.
- Complete cross-reference.

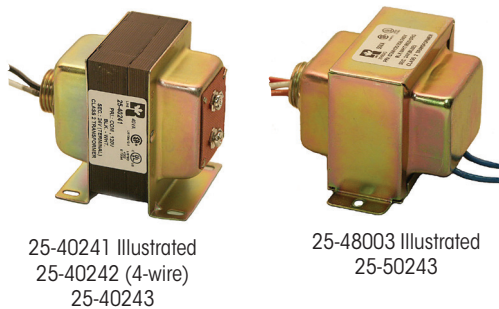
Control transformers are designed for use in 2.5, 12 or 24 volt alternating current (AC) control systems, including air conditioning circuits, thermostats, gas valves, relays and or other applications that do not exceed the listed ratings. These transformers can be used to replace any transformers of the same primary voltage and equal or smaller VA ratings.

SPECIALLY DESIGNED FOR LOW VOLTAGE CONTROL APPLICATIONS IN THE INDUSTRIAL HEATING & COOLING INDUSTRY!



Foot Mount

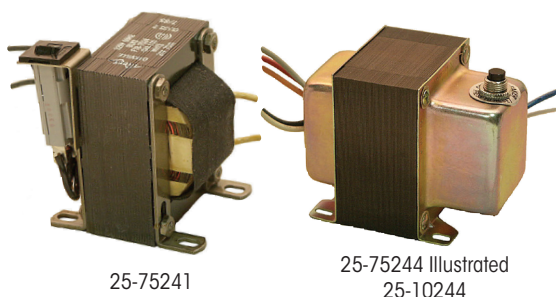
| Part # | VA | Primary Voltage | Secondary | |
|-----------------|----|-----------------|-----------|-------------|
| | | | Voltage | Connections |
| 34-20241 | 20 | 120 | 24 | Wire |
| 34-40244 | 40 | 120 | 24 | Wire |
| 34-40240 | 40 | 240 | 24 | Wire |
| 34-40245 | 40 | 120/ 208/ 240 | 24 | Wire |
| 34-50254 | 50 | 575 | 24 | QC |



Multi Mount (Foot, Plate, Conduit)

34-52C6 mounting plate, (2) screws & (2) wire connectors included.

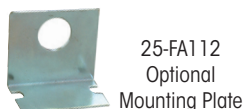
| Part # | VA | Primary Voltage | Secondary | |
|-----------------|----|-----------------|---------------|-------------|
| | | | Voltage | Connections |
| 34-40241 | 40 | 120 | 24 | Screw |
| 34-40242 | 40 | 208/ 240 / 277 | 24 | Screw |
| 34-40243 | 40 | 120/ 208/ 240 | 24 | Screw |
| 34-48003 | 48 | 120/ 208/ 240 | 2.5 / 12 / 24 | Wire |
| 34-50243 | 50 | 120/ 208/ 240 | 24 | Wire |



Foot Mount

Heavy Duty (c/w Circuit Breaker)

| Part # | VA | Primary Voltage | Secondary | |
|-----------------|----|--------------------|-----------|-------------|
| | | | Voltage | Connections |
| 34-75241 | 75 | 120 | 24 | Wire |
| 34-75244 | 75 | 120/ 208/ 240/ 480 | 24 | Wire |
| 34-75254 | 75 | 120/ 208/ 240/ 575 | 24 | Wire |
| 34-10244 | 96 | 120/ 240/ 277/ 480 | 24 | Wire |



Features:

- Automatic & manual reset*
- Corrosion resistant.
- Environmentally sealed (water tight switched).
- Non-position-sensitive.
- Low/high pressure cycling.
- Condenser fan cycling.
- Variety of fixed pressure settings.
- Complete with 1/4 inch SAE female flare fitting with valve core depressor.
- 18 inch leads (longer lead lengths available).

*Note: Automatic reset controls may be used to replace manual reset controls.

Miniature pressure controls are fixed setting controls used on refrigeration, air conditioning, or heat pump systems using R12, R22, R410A or R502 refrigerants. Both low (suction) and high (discharge or head pressure) sensing controls are available. These single function controls, single pole, single throw (SPST) switches may be used in a variety of applications: direct control of single speed fan motors or compressors; in conjunction with a contactor for pilot duty; or to control electronic management systems. The RMF Miniature Pressure control will cycle a single speed condenser fan when the predetermined head pressure (cut in) is reached. When the head pressure is reduced to a predetermined pressure (cut out), the fan will shut off. (Normally open switch). CSA & UL approved.

Pressure Control Switches

| Part # | Application | Setting (psig) | | Cross Reference |
|----------------------|-----------------------|----------------|--------|---|
| | | Cut Out | Cut In | |
| 41-RML-520 | Low Pressure Cut Out | 5 | 20 | 33329, PS-LP05-20, PC002. |
| 41-RML-1025 | | 10 | 25 | 33330, PS-LP10-25, 3100-050. |
| 41-RML-1535 | | 15 | 35 | 33333. |
| 41-RML-1555L | | 15 | 55 | Long Lead (30"). |
| 41-RML-2045 | | 20 | 45 | |
| 41-RML-2580 | | 25 | 80 | 33362, 33363, 33336, PS-LP25-80, 3100-051. |
| 41-RML-3560 | | 35 | 60 | PC001. |
| 41-RML-4080 | | 40 | 80 | 33364, PS-LP40-80, 3100-052. |
| 41-RML-4560 | | 45 | 60 | 33339. |
| 41-RML-75100 | | 75 | 100 | Suitable for R410A |
| 41-RML-90120F | | 90 | 120 | |
| 41-RMF-75120 | Condenser Fan Cycling | 75 | 120 | Suitable for R410A |
| 41-RMF-110170 | | 110 | 170 | |
| 41-RMF-150225 | | 150 | 225 | |
| 41-RMF-190275 | | 190 | 275 | 33341. |
| 41-RMF-300400 | | 300 | 400 | |
| 41-RMH-250180 | High Pressure Cut Out | 250 | 180 | 33350. |
| 41-RMH-300200 | | 300 | 200 | 33310, 33355, PS-HP300-200. |
| 41-RMH-325225 | | 325 | 225 | 33313. |
| 41-RMH-350250 | | 350 | 250 | 33316, 33356, PS-HP350-250, 3100-150, PC150. |
| 41-RMH-375275 | | 375 | 275 | 33319. |
| 41-RMH-400200 | | 400 | 200 | |
| 41-RMH-400300 | | 400 | 300 | 33322, 33357, 33358, PS-HP400-300, 3100-151, PC151. |
| 41-RMH-425325 | | 425 | 325 | 33325, 33359, PC100. |
| 41-RMH-600475 | | 600 | 475 | Suitable for R410A |
| 41-RMM-350 | Mini Pressure Manual | 350 | - | |
| 41-RMM-410 | | 410 | - | 33365 |
| 41-RMM-430 | | 430 | - | 33352 |
| 41-RMM-440 | | 440 | - | 33350 |
| 41-RMM-600 | | 600 | - | |

The miniature pressure controls are supplied with 12 inch, 18 AWG stranded leads, stripped 1/2 inch. RML and RMF are blue – RMH are black.

Pressure Connections

1/4 inch, SAE female flare fitting with valve core depressor.

Fittings

All RML, RMF and RMH controls are individually packaged and equipped with a 1/4" SAE female flare fitting. For application requiring a pressure connector other than 1/4" female flare, use an appropriate adapter or connector.

Example:

02-C31004 – 1/4" SAE male flare to 1/4" tube adapter
02-C31482 – 1/4" SAE male flare to 1/8" MPT connector

Settings

All RML, RMF and RMH controls will have pressures stamped on the control. Normally, the OEM's pressure is stamped on the control.

Automatic reset controls may be used to replace manual resets.

Electrical Ratings

Electrical ratings must not be exceeded and all electrical connections must comply with local approval authorities.

Temperature

Operating Ambient -20° to 150°F (-28° to 65°C).

Refrigerant -35° to 275°F (-37° to 135°C).



41-RML-2045

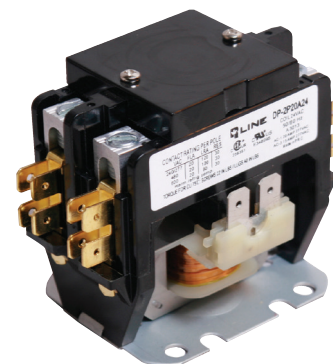
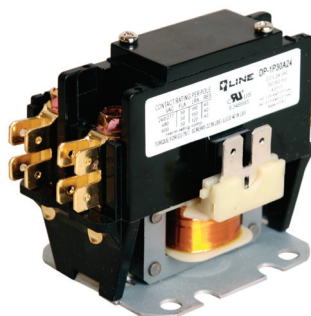
Illustrated



| VAC | FLA | LRA |
|-----|-----|-----|
| 24 | - | - |
| 120 | 10 | 40 |
| 240 | 5 | 20 |
| 277 | - | - |

Features

- 1.5 pole (1 pole with shunt) 30 & 40 amp to 2 pole 20, 25, 30 & 40 amp.
- Features lug, spade terminals and protective covers
- Compact size
- Universal galvanized mounting plates
- ARI 780/790 standards
- Brass/copper terminals
- Quick connect and screw terminals on coil.
- Snap on auxiliary contacts available
- cURus approved



1 Pole with Shunt and 2 Pole Models

| Part # | Poles | Full Load Amps. | Coil Voltage 50/60 | Locked Rotor Amps | | | Resistive Amps. | Termination | Furnas # |
|--------------------|-------|-----------------|--------------------|-------------------|------|------|-----------------|-------------|----------------------------------|
| | | | | 240V | 480V | 600V | | | |
| DP-1P30A24 | 1.5 | 30 | 24 | 180 | 150 | 120 | 40 | Box Lug | 45EG10AJA |
| DP-1P30A120 | 1.5 | 30 | 120 | 180 | 150 | 120 | 40 | Screw Type | 45EG10AFA |
| DP-1P30A240 | 1.5 | 30 | 208/240 | 180 | 150 | 120 | 40 | | 45EG10AGA |
| DP-1P40A24 | 1.5 | 40 | 24 | 240 | 200 | 160 | 50 | Box Lug | 45GG10AJAL, 45FG10AJA, 45GG10AJA |
| DP-1P40A120 | 1.5 | 40 | 120 | 240 | 200 | 160 | 50 | | 45GG10AFAL, 45FG10AFA, 45GG10AFA |
| DP-1P40A240 | 1.5 | 40 | 208/240 | 240 | 200 | 160 | 50 | | 45GG10AGAL, 45FG10AGA, 45GG10AGA |
| DP-2P20A24 | 2 | 20 | 24 | 120 | 100 | 80 | 30 | Box Lug | 45CG20AJ |
| DP-2P20A120 | 2 | 20 | 120 | 120 | 100 | 80 | 30 | | 45CG20AF |
| DP-2P20A240 | 2 | 20 | 208/240 | 120 | 100 | 80 | 30 | | 45CG20AG |
| DP-2P25A24 | 2 | 25 | 24 | 150 | 125 | 100 | 35 | Box Lug | 45DG20AJ |
| DP-2P25A120 | 2 | 25 | 120 | 150 | 125 | 100 | 35 | | 45DG20AF |
| DP-2P25A240 | 2 | 25 | 208/240 | 150 | 125 | 100 | 35 | | 45DG20AG |
| DP-2P30A24 | 2 | 30 | 24 | 180 | 150 | 120 | 40 | Screw Type | 45EG20AJ |
| DP-2P30A120 | 2 | 30 | 120 | 180 | 150 | 120 | 40 | Box Lug | 45EG20AF |
| DP-2P30A240 | 2 | 30 | 208/240 | 180 | 150 | 120 | 40 | Screw Type | 45EG20AG |
| DP-2P40A24 | 2 | 40 | 24 | 240 | 200 | 160 | 50 | Box Lug | 45GG20AJL |
| DP-2P40A120 | 2 | 40 | 120 | 240 | 200 | 160 | 50 | | 45GG20AFL |
| DP-2P40A240 | 2 | 40 | 208/240 | 240 | 200 | 160 | 50 | | 45GG20AGL |

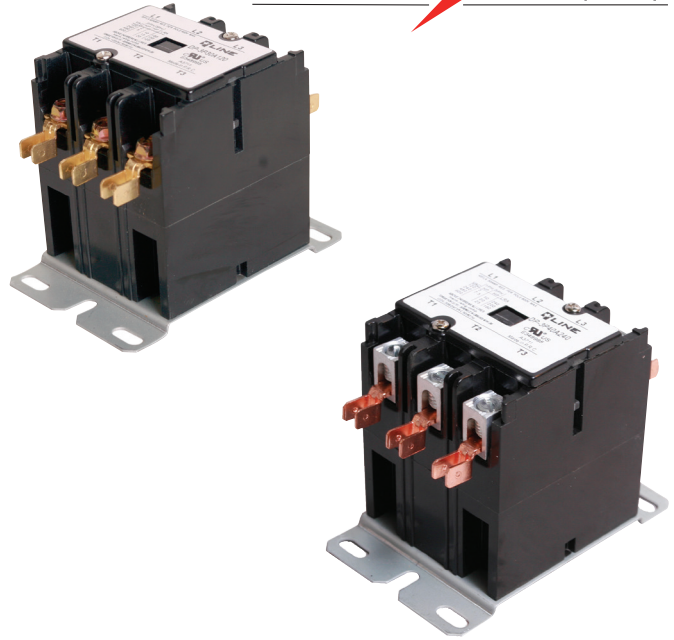
Definite Purpose Magnetic Contactors

Economy

ALLTEMP
a **DIVERSiTECH** company

Features

- 3 pole 20, 25, 30, 40, 50 & 60 amp
- Totally enclosed
- Features lug, spade terminals and protective covers
- Compact size
- Universal galvanized mounting plates
- ARI 780/790 standards
- Push to test button
- Brass/copper terminals
- Quick connect and screw terminals on coil.
- Snap on auxiliary contacts available
- cURus approved

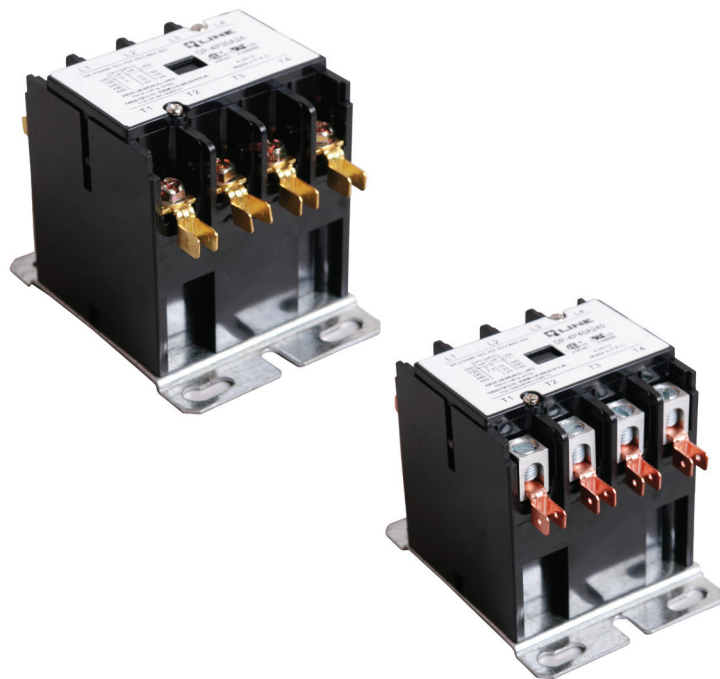


3 Pole Models

| Part # | Poles | Full Load Amps. | Coil Voltage 50/60 | Locked Rotor Amps | | | Resistive Amps. | Termination | Furnas # |
|--------------------|-------|-----------------|--------------------|-------------------|------|------|-----------------|-------------|-------------|
| | | | | 240V | 480V | 600V | | | |
| DP-3P20A24 | 3 | 20 | 24 | 120 | 100 | 80 | 30 | Box Lug | - |
| DP-3P20A120 | 3 | 20 | 120 | 120 | 100 | 80 | 30 | | - |
| DP-3P20A240 | 3 | 20 | 208/240 | 120 | 100 | 80 | 30 | | - |
| DP-3P25A24 | 3 | 25 | 24 | 150 | 125 | 100 | 35 | Box Lug | - |
| DP-3P25A120 | 3 | 25 | 120 | 150 | 125 | 100 | 35 | | - |
| DP-3P25A240 | 3 | 25 | 208/240 | 150 | 125 | 100 | 35 | | - |
| DP-3P30A24 | 3 | 30 | 24 | 180 | 150 | 120 | 40 | Box Lug | 42BF35AJ |
| DP-3P30A120 | 3 | 30 | 120 | 180 | 150 | 120 | 40 | Screw Type | 42BF35AF |
| DP-3P30A240 | 3 | 30 | 208/240 | 180 | 150 | 120 | 40 | | 42BF35AG |
| DP-3P40A24 | 3 | 40 | 24 | 240 | 200 | 160 | 50 | Box Lug | 42CF35AJ |
| DP-3P40A120 | 3 | 40 | 120 | 240 | 200 | 160 | 50 | | 42CF35AF |
| DP-3P40A240 | 3 | 40 | 208/240 | 240 | 200 | 160 | 50 | | 42CF35AG |
| DP-3P50A24 | 3 | 50 | 24 | 300 | 250 | 200 | 65 | Box Lug | 42DF35AJ |
| DP-3P50A120 | 3 | 50 | 120 | 300 | 250 | 200 | 65 | | 42DF35AF |
| DP-3P50A240 | 3 | 50 | 208/240 | 300 | 250 | 200 | 65 | | 42DF35AG |
| DP-3P60A24 | 3 | 60 | 24 | 360 | 300 | 240 | 75 | Box Lug | 42EF35AJ |
| DP-3P60A120 | 3 | 60 | 120 | 360 | 300 | 240 | 75 | | 42EF35AF |
| DP-3P60A240 | 3 | 60 | 208/240 | 360 | 300 | 240 | 75 | | 42EF35AG |
| DP-3P75A24 | 3 | 75 | 24 | 450 | 375 | 300 | 90 | Box Lug | 42FE35AJ106 |
| DP-3P75A120 | 3 | 75 | 120 | 450 | 375 | 300 | 90 | | 42FE35AF106 |
| DP-3P75A240 | 3 | 75 | 208/240 | 450 | 375 | 300 | 90 | | 42FE35AG106 |
| DP-3P90A24 | 3 | 90 | 24 | 540 | 450 | 360 | 120 | Box Lug | 42GE35AJ106 |
| DP-3P90A120 | 3 | 90 | 120 | 540 | 450 | 360 | 120 | | 42GE35AF106 |
| DP-3P90A240 | 3 | 90 | 208/240 | 540 | 450 | 360 | 120 | | 42GE35AG106 |

Features

- 4 pole 20, 25, 30 & 40 amp
- Features lug, spade terminals and protective covers
- Totally enclosed
- Compact size
- Universal galvanized mounting plates
- ARI 780/790 standards
- Push to test button
- Brass/copper terminals
- Quick connect and screw terminals on coil.
- Snap on auxiliary contacts available
- cURus approved



4 Pole Models

| Part # | Poles | Full Load Amps. | Coil Voltage 50/60 | Locked Rotor Amps | | | Resistive Amps. | Termination | Furnas # |
|--------------------|-------|-----------------|--------------------|-------------------|------|------|-----------------|-------------|----------|
| | | | | 240V | 480V | 600V | | | |
| DP-4P20A24 | 4 | 20 | 24 | 120 | 100 | 80 | 30 | Box Lug | - |
| DP-4P20A120 | 4 | 20 | 120 | 120 | 100 | 80 | 30 | | - |
| DP-4P20A240 | 4 | 20 | 208/240 | 120 | 100 | 80 | 30 | | - |
| DP-4P25A24 | 4 | 25 | 24 | 150 | 125 | 100 | 35 | Box Lug | - |
| DP-4P25A120 | 4 | 25 | 120 | 150 | 125 | 100 | 35 | | - |
| DP-4P25A240 | 4 | 25 | 208/240 | 150 | 125 | 100 | 35 | | - |
| DP-4P30A24 | 4 | 30 | 24 | 180 | 150 | 120 | 40 | Box Lug | 42BF25AJ |
| DP-4P30A120 | 4 | 30 | 120 | 180 | 150 | 120 | 40 | Screw Type | 42BF25AF |
| DP-4P30A240 | 4 | 30 | 208/240 | 180 | 150 | 120 | 40 | Box Lug | 42BF25AG |
| DP-4P40A24 | 4 | 40 | 24 | 240 | 200 | 160 | 50 | Box Lug | 42CF25AJ |
| DP-4P40A120 | 4 | 40 | 120 | 240 | 200 | 160 | 50 | | 42CF25AF |
| DP-4P40A240 | 4 | 40 | 208/240 | 240 | 200 | 160 | 50 | | 42CF25AG |

Economy

a **DIVERSiTECH** company

Features

- Auxillary switches for 3 & 4 pole 30 - 90 amp "DP" series contactors
- Compact size
- cURus approved



DP-AS1



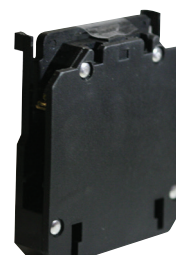
DP-AS2



DP-AS3



DP-AS4



DP-AS5



DP-AS6



DP-AS7



DP-AS8



DP-AS9



DP-AS10

Auxiliary Switches

| Switch Size | Part # | Cont. Amps | Voltage Rating | Description | Connection |
|---------------------------------------|----------------|------------|----------------|-----------------------|------------|
| 3 Pole, 20-60 Amp 4 Pole 30-60 Amp | DP-AS3 | 10 | 600 | 2 x SPST, N.O. & N.C. | Quick |
| | DP-AS6 | 10 | 600 | 2 x SPST, N.O. & N.C. | Screw |
| | DP-AS7 | 10 | 300 | SPDT, N.O. & N.C. | Quick |
| | DP-AS8 | 10 | 300 | 2 x SPDT, N.O. & N.C. | Quick |
| | DP-AS1 | 10 | 600 | SPST, N.O. | Quick |
| | DP-AS4 | 10 | 600 | SPST, N.O. | Screw |
| | DP-AS2 | 10 | 600 | SPST, N.C. | Quick |
| | DP-AS5 | 10 | 600 | SPST, N.C. | Screw |
| 3 Pole, 50-60 Amp | DP-AS10 | 10 | 300 | SPDT, N.O. & N.C. | Quick |
| 3 Pole, 75-90 Amp | DP-AS9 | 10 | 300 | SPDT, N.O. & N.C. | Quick |



25-90290
Illustrated

Contact Rating
- 125/250 VAC

| FLA | LRA | Inductive Amps | Resistive Amps |
|-----|-----|------------------|-------------------|
| 8 | 18 | 8 Amp Continuous | 16 Amp Continuous |

Specifications

- Temperature Range: -20°C (-4°F) to 40°C (104°F).
- Mechanical Life: 1,000,000 operations.
- Electrical Life: 100,000 operations (@ 16amp 240VAC Res.)
- Operate Time (typical): 25 ms at nominal coil voltage.
- Release Time (typical): 25 ms at nominal coil voltage.
- Dielectric Strength (at sea level for 1 min.):
 - 2500 Vrms coil to contact.
 - 1000 Vrms between open contacts.
- Coil Frequency: 50/60 Hz.
- Coil Insulation: Class A (105°C / 221°F).
- Coil Duty Cycle: Continuous.
- Terminals: ¼" quick-connects.
- Contact Material: Silver cerium
- Enclosure: Phenolic.

Features

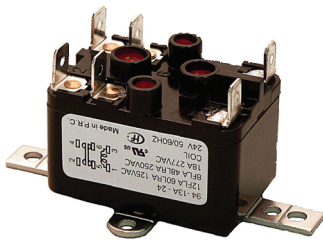
Designed for switching single or two speed fan motor, re-lays, solenoids, resistive loads in cooling, heating or general purpose switching applications.

- Replace WR/ Essex/ RBM & Mars type 84 models
- Totally enclosed compact design.
- Quiet & reliable operations.
- UL & cUR (file E44211)
- Universal mounting bracket.

2-Pole HVAC Standard Duty Relays

| Coil Voltage | Part # SPST | Part # SPDT | Coil Resistance DC OHMS ±10% | Nominal Current MA | Nominal VA Sealed | Inrush VA |
|--------------|-----------------|-----------------|------------------------------|--------------------|-------------------|-----------|
| 24 | 25-90290 | 25-90293 | 90 | 146 | 3.5 | 4 |
| 120 | 25-90291 | 25-90294 | 2,000 | 29 | | |
| 240 | 25-90292 | 25-90295 | 7,200 | 15 | | |

Totally Enclosed Fan Relays - Heavy Duty



25-90380
Illustrated

Specifications

- Temperature Range: -20°C (-4°F) to 40°C (104°F).
- Mechanical Life: 1,000,000 operations.
- Electrical Life: 100,000 operations (@ 25amp 277VAC Res.)
- Operate Time (typical): 25 ms at nominal coil voltage.
- Release Time (typical): 25 ms at nominal coil voltage.
- Dielectric Strength (at sea level for 1 min.):
 - 2500 Vrms coil to contact.
 - 1000 Vrms between open contacts.
- Coil Frequency: 50/60 Hz.
- Coil Insulation: Class A (105°C / 221°F).
- Coil Duty Cycle: Continuous.
- Terminals: ¼" quick-connects.
- Contact Material: Silver cadmium oxide.
- Enclosure: Phenolic.

Features

- Designed for cooling, heating or general purpose switching equipment operating heavier loads.
- Replace WR/ Essex/ RBM & Mars type 184 models
- Totally enclosed compact design.
- Quiet & reliable operations.
- Universal mounting bracket
- UL & cUR (file E44211)
- SPST, SPDT & SPNO/SPNC models.

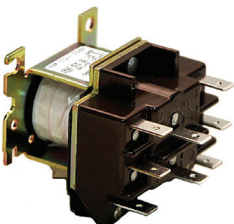
Heavy Duty Relays

| Coil Voltage | SPST Part # | SPDT Part # | SPNO-SPNC* Part # | Coil Resistance DC OHMS ±10% | Nominal Current MA | Nominal VA Sealed | Inrush VA |
|--------------|-----------------|-----------------|-------------------|------------------------------|--------------------|-------------------|-----------|
| 24 | 25-90360 | 25-90370 | 25-90380 | 77 | 167 | 4 | 4 |
| 120 | 25-90362 | 25-90372 | 25-90382 | 2,000 | 33 | | |
| 240 | 25-90364 | 25-90374 | 25-90384 | 7,200 | 17 | | |

Contact Rating

| VAC | Amps | FLA | LRA | Inductive Amps | Resistive Amps |
|--------|------|-----|-----|-------------------|-----------------------------|
| 125VAC | 25 | 14 | 84 | 14 Amp Continuous | 25 Amp Continuous @ 277 VAC |
| 250VAC | | 8 | 48 | 8 Amp Continuous | |
| 277VAC | | 7 | 42 | 7 Amp Continuous | |

Totally Enclosed Relay - 2 Pole HVAC Switching Relays



25-90340
Illustrated

Specifications

- Temperature Range: -40°C (-40°F) to 54°C (130°F).
- Mechanical Life: 750,000 operations.
- Electrical Life: 100,000 operations.
- Coil Frequency: 50/60 Hz.
- Coil Insulation: Class B.
- Coil Duty Cycle: Continuous.
- Terminals: ¼" quick-connects.
- Contact Material: Silver cadmium oxide.
- Enclosure: Phenolic.
- Dimensions 2.13" x 1.88" x 2.25".

Features

- Intended for many applications in air conditioning, refrigeration, heating and general purpose switching.
- Replaces Honeywell, White-Rodgers/RBM & Mars (cross reference in packaging)
- Semi-enclosed compact design.
- Quiet & reliable operations.
- Universal mounting bracket
- Molded terminal numbers and circuit diagram on top of relay.
- UL & cUR (file E44211).
- 2 Pole DT mode

Heavy Duty Relays

| Coil Voltage | DPDT Part # | Terminals 1,2,3. | Terminals 4,5,6. | Resistance DC OHMS ±10% | Nominal Current MA | Nominal VA Sealed Max. | Inrush VA Max. | Cross Reference | | | VAC | Amps General Use | HP | LRA | FLA |
|--------------|-----------------|------------------|------------------|-------------------------|--------------------|------------------------|----------------|-----------------|------------|-------|------|------------------|-----|------|------|
| | | | | | | | | WR/ RBM | Honeywell | Mars | | | | | |
| 24 | 25-90340 | Power | Power | 15 | 334 | 8 | 21.5 | 90-340 | R4222B1082 | 90340 | 125V | 15 | 3/4 | 82.8 | 13.8 |
| 120 | 25-90341 | | | 400 | 66 | | | 90-341 | R4222B1090 | 90341 | 208V | | | 45.6 | 7.6 |
| 240 | 25-90342 | | | 1415 | 38 | | | 90-342 | R4222D1013 | 90342 | 250V | | | 41.4 | 6.9 |
| | | | | | | | | | | | 277V | | | 36.0 | 6.0 |

Features

- Solid State PTC Heaters
- Quick-Connect Terminals
- Shock & Vibration Resistant
- Mounts in any position
- Contact Ratings - to 25 Amps at 120 or 240 Volts, and 12.5A at 480 Volts
- Full-Load Rated Auxilliary Contacts
- Standard Operating Ambience Between -50°F (-45.5°C) and 165°F (73.8°C)



Applications

- Electric Furnaces
- Baseboard Heaters
- Duct Heaters
- Suspension Heaters
- Recreational vehicle blower and element control
- Heat pump blower and heating element control
- Motor speed switching in air conditioning (high speed) / heating systems handle combination motor and heater element loading in the heater function
- Control circuits requiring definite sequence on both start up and shut down

Standard Timings

| Part # | Timings | Switches | Timings (seconds) - On | | | | | Timings (seconds) - Off | | | | |
|--------------------|---------|----------|------------------------|-----------|-----------|-----------|------------|-------------------------|-----------|-----------|-----------|------------|
| | | | M1- M2 | M3- M4 | M5- M6 | M7- M8 | M9- M10 | M1- M2 | M3- M4 | M5- M6 | M7- M8 | M9- M10 |
| HS-24A34-21 | 1 | 1 | 1-20 | | | | | 1-60 | | | | |
| HS-24A34-22 | 1 | 1 | 15-45 | | | | | 1-30 | | | | |
| HS-24A34-23 | 1 | 1 | 25-60 | | | | | 15-45 | | | | |
| HS-24A34-24 | 1 | 1 | 30-90 | | | | | 1-40 | | | | |
| HS-24A34-25 | 1 | 1 | 30-90 | | | | | 1-30 | | | | |
| HS-24A34-26 | 2 | 2 | 1-20 | 30-90 | | | | 40-90 | 1-30 | | | |
| HS-24A34-27 | 3 | 1 | 1-160 | | | | | 1-160 | | | | |
| HS-24A34-29 | 1 | 1 | 15-35 | | | | | 25-55 | | | | |
| HS-24A34-36 | 2 | 2 | 1-20 | 30-90 | | | | 45-110 | 1-30 | | | |
| HS-24A34-37 | 3 | 1 | 1-110 | | | | | 1-110 | | | | |

Notes

- M1-M2 and M3-M4 are always the first switches to turn on and the last to turn off. All other switches are random on and random off.
- ON TIME - Elapsed time to make contacts after heater is energized
- OFF TIME - Elapsed time to make contacts after heater is de-energized
- OFF timings determined after PTC heater has been electrified for a total of 5 minutes
- Standard Timings determined at 25°C. Timings at temperatures above or below 25° will vary

Heater Pole

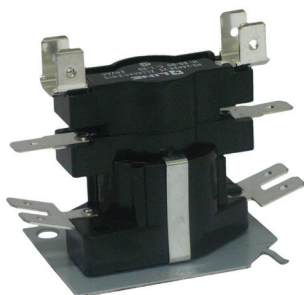
24 Vac 0.18A (anticipator)
0.75A Max Inrush
0.16 to 0.20 amps Steady State
Ambient Rating: - 50° to 160°F

Electrical Ratings

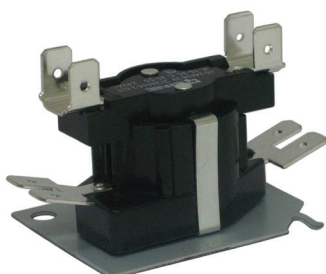
| VAC | Resistive (non-inductive) | | Motor ratings (inductive) | | Pilot Duty |
|-----|---------------------------|------|---------------------------|--------------|------------|
| | Watts | Amps | Full Load | Locked Rotor | |
| 120 | 3000 | 25.0 | 10.0A | 60.0A | 125VA |
| 240 | 6000 | 25.0 | 5.0A | 30.0A | 125VA |
| 480 | 6000 | 12.5 | 3.0A | 18.0A | 480VA |

Combined Load Ratings (all models):

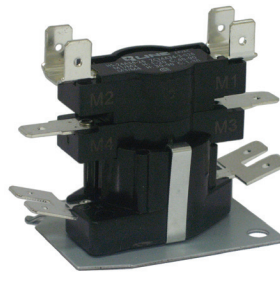
30A @ 240 VAC - Total: 23 A non-inductive
+ 7 FLA/42 LRA Inductive
Life at rated current: 100,000 cycles



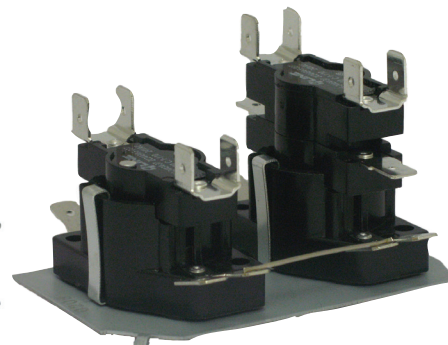
HS-24A34-21, 22, 23, 24, 25



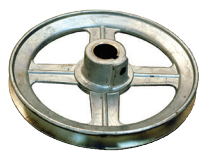
HS-24A34-29



HS-24A34-26, 27, 36



HS-24A34-37



67-660
Illustrated

Blower Pulleys

| Part # | Bore | Diameter |
|---------|------|----------|
| 67-650* | 3/4" | 5" |
| 67-660 | | 6" |
| 67-670 | | 7" |
| 67-680 | | 8" |
| 67-690 | | 9" |
| 67-610 | | 10" |
| 67-612 | | 12" |

* 5" pulley is solid

Blower Pulleys

| Part # | Bore | Diameter |
|--------|------|----------|
| 67-860 | 1" | 6" |
| 67-870 | | 7" |
| 67-880 | | 8" |
| 67-890 | | 9" |
| 67-810 | | 10" |
| 67-812 | | 12" |



67-4325
Illustrated

Variable Speed Pulleys

| Part # | Bore | Diameter |
|---------|------|----------|
| 67-4325 | 1/2" | 3 1/4" |
| 67-4350 | | 3 1/2" |
| 67-4375 | | 3 3/4" |
| 67-4400 | | 4" |
| 67-5325 | 5/8" | 3 1/4" |
| 67-5350 | | 3 1/2" |
| 67-5375 | | 3 3/4" |
| 67-5400 | | 4" |

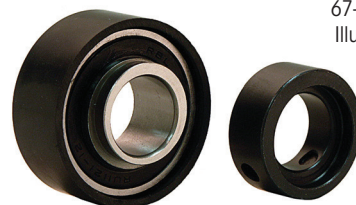
Cast aluminum pulley mfg'd to OEM specs

Bearings

Ball Bearings

Bearings complete with collar.

| Part # | Bore | OD | Replaces |
|-----------|------|----------|----------------------------|
| 67-4336-1 | 3/4" | 1 13/16" | LRCR |
| 67-4336-2 | | | (2) Bearings & (2) Collars |
| 67-4346-1 | 1" | 2 1/4" | RCR |



67-4336-1
Illustrated

Sleeve Bearing Packs

Kits include 2 bearings & 2 rubber sleeves.

| Part # | Bore | OD | Type | Replaces |
|-----------|------|----------|--------|--------------|
| 67-4036-2 | 3/4" | 1 25/32" | Oil | Delhi |
| 67-4135-2 | 5/8" | 1 7/8" | Sealed | Lau |
| 67-4136-2 | 3/4" | 1 13/16" | | Delhi |
| 67-4137-2 | | 1 7/8" | | Lau & Lennox |
| 67-4138-2 | | | | Torin |
| 67-4147-2 | 1" | 2 1/2" | | Lau & Lennox |
| 67-4148-2 | | | | Torin |



67-4036-2
Oil Type Illustrated



67-4136-2
Sealed Type Illustrated



Bearings & Sleeves

| Part # | Bore | Type |
|-----------|------|----------------|
| 67-4136-R | 3/4" | Rubber sleeve |
| 67-4146-R | 1" | Rubber sleeve |
| 67-4136-B | 3/4" | Sealed bearing |
| 67-4036-B | 3/4" | Oil bearing |



67-4136-R
Illustrated



67-4136-B
Illustrated



67-4046-B
Illustrated

Thrust Collar Packs

| Part # | Description |
|---------|-----------------------------|
| 67-2164 | (2) 5/8" collars & washers. |
| 67-2165 | (2) 3/4" collars & washers. |
| 67-2166 | (2) 1" collars & washers. |



67-2165
Illustrated

Cushioned Pillow Blocks

| Part # | Description | Industry no. | Lau no. | Bearing shaft size | Order mult. |
|---------|-----------------------------|--------------|------------|--------------------|-------------|
| 535-BB1 | Bronze Bearing Pillow Block | NAH8A | | 1/2" | 1 |
| 535-BB2 | Bronze Bearing Pillow Block | NAH10A | 38-2204-01 | 5/8" | 1 |
| 535-BB3 | Bronze Bearing Pillow Block | NAH12A | 38-2086-01 | 3/4" | 1 |
| 535-BB4 | Bronze Bearing Pillow Block | NAH16A | 38-2087-01 | 1" | 1 |

NEW!!



Side Flange Mount Pillow Blocks

| Part # | Description | Industry No. | Bearing Shaft Size | Order Mult. |
|---------|------------------------|--------------|--------------------|-------------|
| 535-BB6 | Cushioned Flange Block | NAH10A | 5/8" | 1 |

NEW!!



Shafts & Smoke Emitters

Sized to bearing manufacturer's specifications.
Slabbed on pulley end.
Rust protected.
Individually wrapped.
Protective end caps.
Part number and size listed on every shaft.



67-61610
Illustrated

| Part # | Diameter | Length | Reference |
|-----------------|----------|----------|---|
| 67-61100 | 3/4" | 11" | Lennox, 2100157 |
| 67-61110 | | 11 5/8" | Lennox |
| 67-61212 | | 12 3/4" | 8-5-495C, 2100002 |
| 67-61400 | | 14" | 8-5-245C, 2100159 |
| 67-61550 | | 15 5/16" | G9, G12-9, 2100160 |
| 67-61600 | | 16" | 8-6-23608, WW15X36, 2100162, 2100163, 2100198 |
| 67-61610 | | 16 5/8" | 8-5-240C, G10, G110, 2100011, 2100161 |
| 67-61800 | | 18" | 8-5-247C, 8-5-241C, 2100012 |
| 67-61920 | | 19 1/8" | G12, 2100168 |
| 67-62000 | | 20" | M90-256, RS620 |
| 67-62200 | | 22" | 2100013 |
| 67-62400 | | 24" | 8-5-243C |
| 67-63600 | | 36" | |
| 67-82000 | 1" | 20" | G15-72, 2100165, 2100078, 2100081, 2100076 |
| 67-82400 | | 25" | 8-5-252C & 255C, M90-257, G15, 2100037, 55, 56, 2100166 |
| 67-83600 | | 36" | P-S-209, M90-270, 2100168, 2100052, 210054 |

Smoke Emitters

Cartridge Type Smoke Emitters

| Part # | Type | Burning Time (seconds) | Cartridge / Pack | Smoke Emitted (Cu. ft.) | Weight / Cartridge |
|-------------------|----------|------------------------|------------------|-------------------------|--------------------|
| 61-S210-25 | Splintax | 20 | 25 matches/pk | 20 | 0.35 oz. |
| 61-HT102 | Fumax | 45 | 10 | 150 | 1/10 lbs |
| 61-HT103 | Fumax KS | 90 | 10 | 600 | 1/3 lbs |
| 61-HT104 | Ventax | 180 | 5 | 1,200 | 2/3 lbs |
| 61-HT105 | Datax | 240 | 5 | 2,500 | 2 lbs |



61-S210-25
Illustrated



61-HT102
Illustrated



61-HT105
Illustrated

Pen Type Smoke Emitter

| Part # | Description |
|----------------|--|
| 61-S220 | Contains 1 pen with 6/ pk replacement wicks. 6 wicks provide up to 3 hours of continuous smoke, or 360 individual 30 second tests. |
| 61-S221 | 6 pack of replacement wicks in plastic case for 61-S220 smoke pen. |



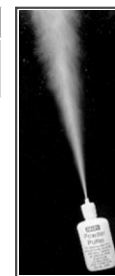
61-S220
Illustrated

61-S221
Illustrated

Smoke Bottles

| Part # | Description |
|----------------|--|
| 61-S101 | 10 Smoke bottles. Each bottle can be used for 24 hours after ampule has been broken. |

Note: The smoke generated by smoke bottles is corrosive.



61-S101
Illustrated



61-S201
Illustrated

Powder-Puffers

| Part # | Description |
|----------------|--------------------|
| 61-S201 | 10 Powder-Puffers. |

Thermostats - Fixed Temperature

Fixed Temperature Thermostats

- The 78-SC055 to 78-SC075S series of thermostats are low cost single set point thermostats intended for temporary heating or cooling to allow drywall to dry during construction. Can also be used for low ambient cut-off switch.
- Rugged utility thermostat for temporary applications.
- Ideal for new or ongoing construction areas.
- Five fixed set point models to choose from (55°, 60°, 65°, 70°, 75°F).
- Hardwired.

Specifications

Electrical Rating

24 volt AC (18-30 VAC)

2 amp maximum

Temperature Control Ranges

Accuracy $\pm 5^\circ\text{F}$ 55°, 60°, 65°, 70°, 75°F

Applications

Ideal for warehouses & new home construction!

2 Wire Fixed Thermostats

| Part # | Description |
|-----------------|-------------|
| 78-SC045 | 45°F cool. |
| 78-SC055 | 55°F cool. |
| 78-SC060 | 60°F heat. |
| 78-SC065 | 65°F heat. |
| 78-SC070 | 70°F heat. |
| 78-SC075 | 75°F cool. |

"Dry Out" Thermostats



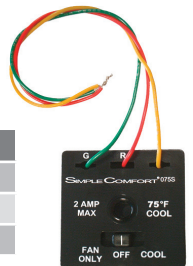
78-SC075
Illustrated

3 Wire Fixed Thermostats

Switched fan, 3 modes:

- Fan Only • Off • Heat or Cool

| Part # | Description |
|------------------|---------------------------------|
| 78-SC060S | 60°F w/ switch - fan/off/ heat. |
| 78-SC070S | 70°F w/ switch - fan/off/ heat. |
| 78-SC075S | 75°F w/ switch - fan/off/ cool. |

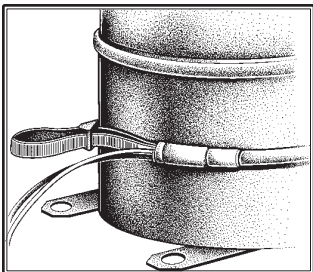


78-SC075S
Illustrated

Crankcase Heater



Self Regulating!



"Compressor Burnout Protection!"

- When a refrigeration compressor shuts down or enters a long-off cycle, liquid refrigerant migrates into its crankcase oil. Lubrication decreases and crankcase burnout can occur when operation resumes.
- Energy efficient, self-regulating design automatically varies output to maintain adequate oil temperature while permitting wrapping and crossover without burnout.
- Handles compressors up to 5 Hp, 120 or 240 volt applications.
- Fits all crankcases with circumferences smaller than 49".

Crankcase Compressor Heaters

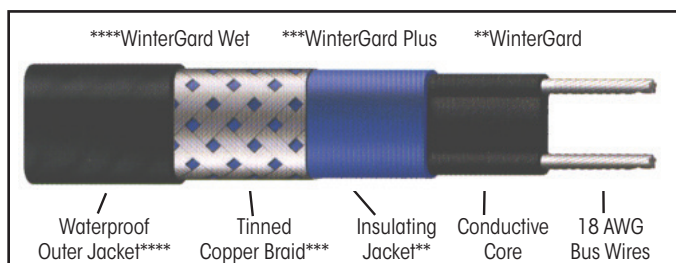
| Part # | Volts | Output @ -18°C (0°F) | Output @ 16°C (60°F) | Weight |
|-----------------|-------|-------------------------|-------------------------|----------|
| 75-HCCH1 | 120 | 60W | 35W | 0.5 lbs. |
| 75-HCCH2 | 240 | | | 0.5 lbs. |

Heat Cable

Self Regulating Heat Cable

"Self Regulating" Heating Tape

- Easy installation
- Won't burn out
- Won't overheat
- OK to overlap
- OK to insulate
- OK for plastic
- No thermostat required
- Cut to desired length
- Higher efficiency
- UL & CSA approved



WinterGard Heating Cable

- Economical solution for residential/ commercial pipes up to 2" diameter and circuit length up to 250'.
- Dry applications only.
- Tough - steel braided.



WinterGard Plus Heating Cable

- Designed for more demanding residential/ commercial with larger plastic or metal pipes with diameters up to 8" and circuit lengths up to 250'.
- Dry applications only.
- Tough - steel braided.

Applications

- Ideal freeze protection for pipes in unheated attics, basements and garages.
- Use it for intake and drain lines, water meters, outside pipes and taps.

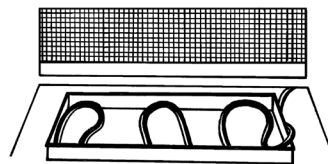


WinterGard Wet Heating Cable

- The answer for freeze protection in wet or high moisture residential/ commercial locations such as drain lines with larger plastic or metal pipes. Suitable for pipe diameters up to 8" and circuit lengths up to 1000'.
- Wet or dry applications.
- Tough - steel braided & waterproof outer jacket.

Applications

- Ideal for residential & commercial buildings.
- Use it to freeze protect water service & fire protection systems.
- Roof & gutter de-icing.



Keep Wet Areas From Freezing
With WinterGard Wet for tracing air conditioner drain pans to prevent freezing or gut tracing freezer drain lines to prevent backup problems.

Protect Pipes
With WinterGard or WinterGard Plus for freeze protection of short & small diameter piping. Pre-cut lengths or custom cut lengths.



120V

- Blue Cable - Steel Braid

| Part # | Watts/ft | Power | Length | Weight |
|--------------------|----------|-------|-----------------|-----------|
| 75-H611050 | 6 | 120V | 50' Box | 3.0 lbs. |
| 75-H611100* | 6 | 120V | 100' Truck Pack | 9.0 lbs. |
| 75-H611250 | 6 | 120V | 250' Reel | 17.0 lbs. |

* 100' Truck Packs include (2) 75-H900, (1) 75-H903 & (1) 75-H910.



240V

- Red Cable - Steel Braid

| Part # | Watts/ft | Power | Length | Weight |
|--------------------|----------|-------|-----------------|-----------|
| 75-H621050 | 6 | 240V | 50' Box | 3.0 lbs. |
| 75-H621100* | 6 | 240V | 100' Truck Pack | 9.0 lbs. |
| 75-H621250 | 6 | 240V | 250' Reel | 17.0 lbs. |

* 100' Truck Packs include (2) 75-H900, (1) 75-H903 & (1) 75-H910.



120V

- Blue Cable - Steel Braid - Black Jacket

| Part # | Watts/ft | Power | Length | Weight |
|--------------------|----------|-------|-----------------|-----------|
| 75-H612050 | 6 | 120V | 50' Box | 4.0 lbs. |
| 75-H612100* | 6 | 120V | 100' Truck Pack | 10.0 lbs. |
| 75-H612250 | 6 | 120V | 250' Reel | 20.0 lbs. |
| 75-H612500 | 6 | 120V | 500' Reel | 43.0 lbs. |
| 75-H6121000 | 6 | 120V | 1000' Reel | 77.0 lbs. |



240V

- Red Cable - Steel Braid - Black Jacket

| Part # | Watts/ft | Power | Length | Weight |
|--------------------|----------|-------|-----------------|-----------|
| 75-H622050 | 6 | 240V | 50' Box | 4.0 lbs. |
| 75-H622100* | 6 | 240V | 100' Truck Pack | 10.0 lbs. |
| 75-H622250 | 6 | 240V | 250' Reel | 20.0 lbs. |
| 75-H622500 | 6 | 240V | 500' Reel | 43.0 lbs. |
| 75-H6221000 | 6 | 240V | 1000' Reel | 77.0 lbs. |

* 100' Truck Packs include (2) 75-H900, (1) 75-H903 & (1) 75-H910.

Standard Packaging

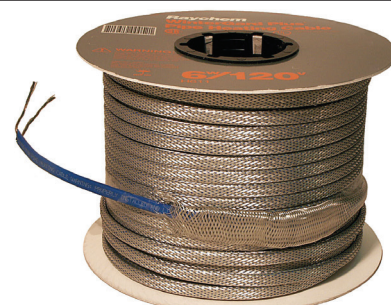
- Winter Guard.
- Winter Guard Plus.
- Winter Guard Wet.



75-H611050
50' Box Illustrated



75-H611100
100' Truck Pack Illustrated



75-H611250
250' Reel Illustrated

Self Regulating (Pre-assembled) Heat Cable

Raychem

Gardian Pre-assembled Heating Cable Kits

- Perfect for residential or commercial small applications with short pipe runs up to 100', 2" diameter.
- Rugged copper braid provides abrasion and damage protection.
- 120V (30" power cord & plug) 240V (hardwired).



75-W51-6P
Illustrated



Gardian
Pre-assembled
Heating Cable

120V



| Part # | Watts/ft | Volts | Length | Weight |
|--------------------|----------|-------|----------|----------|
| 75-W51-6P | 5 | 120V | 6' Kit | 1.0 lbs. |
| 75-W51-12P | 5 | 120V | 12' Kit | 1.3 lbs. |
| 75-W51-18P | 5 | 120V | 18' Kit | 1.6 lbs. |
| 75-W51-24P | 5 | 120V | 24' Kit | 2.0 lbs. |
| 75-W51-75P | 5 | 120V | 75' Kit | 5.4 lbs. |
| 75-W51-100P | 5 | 120V | 100' Kit | 6.9 lbs. |

240V

| | | | | |
|-------------------|---|------|---------|----------|
| 75-W52-6L | 5 | 240V | 6' Kit | 1.0 lbs. |
| 75-W52-12L | 5 | 240V | 12' Kit | 1.3 lbs. |
| 75-W52-18L | 5 | 240V | 18' Kit | 1.6 lbs. |
| 75-W52-24L | 5 | 240V | 24' Kit | 2.0 lbs. |

Accessories - Self Regulating Heat Cable

Raychem



Accessories

| Part # | Description | Weight |
|--------------------|---|----------|
| 75-H900 | Power connection kit. | 0.5 lbs. |
| 75-H903 | Fibreglass application tape & "Electric traced" labels. | 0.3 lbs. |
| 75-H908 | Plug-in Power connection kit. | 1.0 lbs. |
| 75-H910 | Splice & tee kit. | 0.3 lbs. |
| 75-FGK-P-RS | "Original" termination kit. | 0.3 lbs. |
| 75-H912 | Gel-filled end seal kit (2 ea.) | 0.3 lbs. |
| 75-H913 | Roof clips (10 ea.) | 1.0 lbs. |
| 75-H915 | Downspout hanger bracket. | 0.5 lbs. |
| 75-AMC-F5 | Fixed point thermostat 5°C (40°F). | 1.5 lbs. |
| 75-TC-3 | 2 receptacle thermo cube thermostatically controlled outlet (120V, 15 amp). - ON @ 2°C (35°F), OFF @ 7°C (45°F). | 1.0 lbs. |



75-FGK-P-RS
Termination Kit
Illustrated

General Purpose Pumps

The DiversiTech CP-16 condensate pump is an economical alternative that's based off of the proven CP-22 design. More compact than the CP-22, it's designed to lift to a maximum of 16 feet. The CP-16 shares many of the great features of the CP-22, including hang tabs, four inlet holes, float switch, overflow switch, and a check valve. UL Listed File Numbers E253155 and E258186.

NEW!!

| Part # | Discription | Order Mult. |
|------------------|-------------------------------|-------------|
| CP-16 | Condensate Pump 16' Lift 120V | 6 |
| CP-16-230 | Condensate Pump 16' Lift 230V | 6 |



CP-22 Pumps

Suitable for use with condensate from HVAC equipment which produce condensate. 22' of lift compared to the typical 20'. Features include vibration dampening feet and motor mounts, metal hang tabs, four inlet holes, a clear indicator display, a float switch and check valve. Integrating the CP-22 into your system is easy. 1/4" quick connect terminals provide easy connection to the built in overflow switch. 2 terminals are provided allowing flexibility to connect air handler shut down. UL Listed File Numbers E253155 and E258186.

NEW!!

| Part # | Discription | Order Mult. |
|------------------|------------------------|-------------|
| CP-22 | Condensate Pump – 120V | 6 |
| CP-22-230 | Condensate Pump – 230V | 6 |



FP-22 Furnace Pump

The FP-22 Furnace Pump is a full featured condensate pump designed for condensing furnaces and other hot water applications. It handles hot condensate water up to 190 degrees F. Other features include 22' lift, built-in P traps, steam resistant electronics, and a super tough tank. Available in 120 and 230V models.

NEW!!

| Part # | Discription | Order Mult. |
|------------------|---|-------------|
| FP-22 | Furnace Pump 120V 22' Lift 190°F Condensate | 1 |
| FP-22-230 | Furnace Pump 130V 22' Lift 190°F Condensate | 1 |



BP-46 Boiler Pump

The BP-46 Boiler Pump is a heavy duty, full featured condensate pump for hot water applications up to 212 degrees F. It features a 46' lift, oil resistant tank and impeller, two inlet holes and 1/4 turn check valve. Additional features include high impact construction, large tank and is available in 120 and 230V models.



NEW!!

| Part # | Discription | Order Mult. |
|------------------|--|-------------|
| BP-46 | High Temperature Boiler Pump 115V, 46' Lift 212°F Condensate | 1 |
| BP-46-230 | High Temperature Boiler Pump 230V, 46' Lift 212°F Condensate | 1 |



Head Pressure Controls

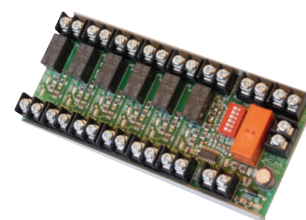
Dual ON/ OFF Delays Control Fan

| Part # | Features & Applications | Specifications | Cross Reference | |
|---|--|---|--|---|
|  <p>24-ICM325HNVC-LF 120-600VAC</p> | <ul style="list-style-type: none"> • Integral heat pump bypass circuitry allows electronic bypass of speed control. • Eliminates overshoots common to on/off and pressure switch controls. • Helps prevent evaporator freeze-ups, low pressure cut-outs and liquid-slugged compressors in low ambient conditions. • One model covers 120 to 480 VAC. • Features hard start (adj. 1 to 5 sec.), low speed cut-off (adj.), high temperature bypass, isolated 24 VAC supply. • Controls up to 3 refrigerant circuits. • Typical application: heat pumps. • 4.5" x 3" x 1.75". | <p>Input</p> <ul style="list-style-type: none"> • Control: 18-30 VAC. • Frequency: 50/ 60 Hz. 1.8 VA max. • Line input: 120-600 VAC. <p>Output</p> <ul style="list-style-type: none"> • Max: 10 amps. • Min: 100 mA. | <p>One ICM model replaces:</p> <p>Ranco</p> <ul style="list-style-type: none"> • E31 Series <p>Johnson Controls</p> <ul style="list-style-type: none"> • P66 <p>ACT</p> <ul style="list-style-type: none"> • FM2000 | <p>Hoffman</p> <ul style="list-style-type: none"> • 800 • 800A • 800AA • 814-50 • 816-10 |
|  <p>24-ICM326HN 120 or 208/ 240 VAC</p> | <ul style="list-style-type: none"> • Built-in transformer eliminates cost, reduces installation time and simplifies wiring. • Helps prevent evaporator freeze-ups, low pressure cut-outs and liquid-slugged compressors in low ambient conditions. • Features hard start, low temperature cut-off, high temperature bypass. • 4.5" x 3" x 2". • Typical application: ideal for heat pumps, line voltage air conditioning and refrigeration. | <p>24-ICM326H</p> <ul style="list-style-type: none"> • Control: 120 or 208/ 240 VAC. <p>24-ICM327H</p> <ul style="list-style-type: none"> • Control: 480 VAC. • Frequency: 50/ 60 Hz. <p>Output current:</p> <ul style="list-style-type: none"> • Max: 10 amps. • Min: 100 mA. | <p>Ranco</p> <ul style="list-style-type: none"> • E31 Series <p>Johnson Controls</p> <ul style="list-style-type: none"> • P66 | <p>Hoffman</p> <ul style="list-style-type: none"> • 800 • 800A • 800AA • 814-50 • 816-10 |

Fan Coil Relay Controls



| Part # | Features and Applications | Specifications |
|-------------------|---|---|
| 24-ICM6100 | <p>Fan safety alarm circuit</p> <p>Outputs provided ensure that a DDC controller can determine the root cause of a shutdown</p> <p>Dip switch to bypass inputs not in use</p> <p>Ideal for Air Handling Unit safety shutdown</p> <p>2.75" mounting track provided</p> | <p>Input: 24VAC; 50-60Hz (4A max)</p> <p>Output: Relay outputs (6): 2A @ 24 VAC/DC per output</p> <p>Master Relay 24VAC (2): 1.5A @ 24 VAC per output</p> <p>Master Relay Dry Contacts: 10A @ 250 VAC</p> <p>Alarm Status: Green LED ON = Activated</p> <p>Red LED ON = Not activated</p> <p>REPLACES: Functional devices: RIBMNLB-6</p> |
| 24-ICM6200 | <p>Ability to operate line voltage 3 speed fan motor with low voltage controls</p> <p>Compatible with 4-pipe, 2 pipe, HP, auto-changeover</p> <p>20 VA 24 VAC power supply</p> <p>Suitable for 1/8 HP motors</p> <p>1/4" Quick connect terminals</p> <p>mounts with standard 3" track</p> | <p>Input: Transformer Primary: 115VAC; 50-60Hz</p> <p>Fan Inputs Hi, Med, Low: Nominal 17mA @ 24 VAC</p> <p>Heat & Cool: 1.5A @ 250 VAC</p> <p>Output: Transformer Secondary: 24 VAC; 20 VA</p> <p>Relay outputs H, M, L: 1/8 HP @115 VAC</p> <p>10A @ 240VAC resistive max</p> <p>Heat & Cool Valves: 1.5A @ 250 VAC</p> <p>REPLACES: Honeywell W6380B, BSR/Xactone FC/H2</p> |
| 24-ICM6201 | <p>Ability to operate line voltage 3 speed fan motor with low voltage controls</p> <p>Ability to operate line voltage electric heating element with low voltage controls</p> <p>Compatible with 4-pipe, 2 pipe, aquastat auto-changeover, and heat pump</p> <p>20 VA 24 VAC power supply</p> <p>Suitable for 1/8 HP motors</p> <p>Screw terminal receptacles</p> <p>mounts with standard 3" track</p> | <p>Input: Transformer Primary (L1 & L2): 115VAC; 50-60Hz</p> <p>Hi, Med, Low (8, 7, 6): Nominal 17mA @ 24 VAC</p> <p>Inputs 1, 2, 3, 4, 5, Auqa Heat & Cool: 1.5A @ 250 VAC</p> <p>Output: Transformer Secondary: 24 VAC; 20 VA</p> <p>Relay outputs H, M, L: 1/8 HP @115 VAC</p> <p>10A @ 240VAC resistive max</p> <p>HTR Output: 30A @ 240 VAC resistive</p> <p>Heat & Cool Valves: 1.5A @ 250 VAC</p> <p>REPLACES: Honeywell W6380B, BSR/Xactone FC/H1</p> |



Post Purge Control

Continues to run the fan at the end of the heating/cooling cycle, thereby purging the ducts of residual air and increasing system efficiency.



24-ICM253

| Part # | Features and Applications | Specifications | Replaces |
|------------------|--|--|---|
| 24-ICM253 | UL 873 recognition for compressor applications Post-purge fan delay timer Interrogation delay eliminates nuisance trips due to thermostat bounce/tampering | Voltage: 18-30VAC 1 Amp Max 40 mA Min. 10 Amp Inrush Adjustable time delay 12-390 seconds Dimensions: 2"x3" | Field Controls: 46144700 Gemline: 1C216 Mars: 32393 |

Dual On/Off Delays - Pre

Delay on make lets air reach proper level prior to turning the fan on.
Continues to run the fan at the end of the heating/cooling cycle, thereby purging the ducts of residual air and increasing system efficiency.



24-ICM251



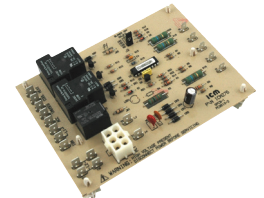
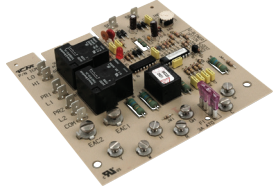
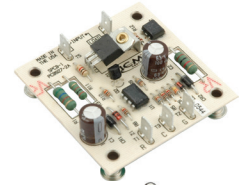
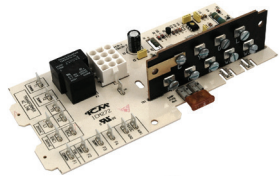
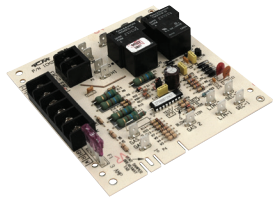
24-ICM254



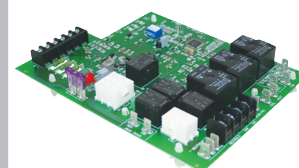
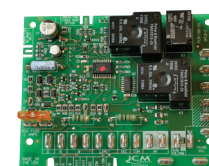
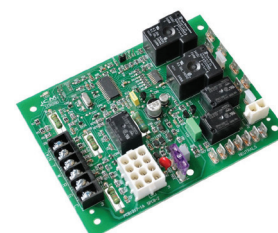
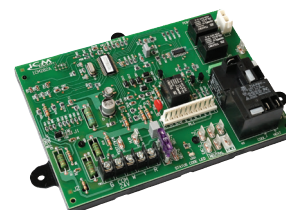
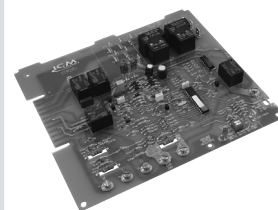
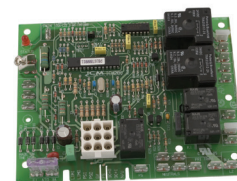
24-ICM255

| Part # | Features and Applications | Specifications | Replaces |
|------------------|--|---|---|
| 24-ICM251 | Drives fan directly High power, relay output Dual function fan relay timer | Voltage: 18-30VAC Output: N.O.: 20 Amps @ 240VAC N.C.: 10 amps @ 240VAC Time Delays Adjustable On - 1-180 seconds Off - 12-390 seconds Dimensions: 2"x3" | Mars: 32377, 32378, 32379 |
| 24-ICM254 | Dual function fan timer Controls the circulating fan in heat pump, A/C and forced air systems | Voltage: 18-30VAC 1 Amp Max 40 mA Min. 10 Amp Inrush Time Delays Adjustable On - 1-180 seconds Off - 12-390 seconds Dimensions: 2"x3" | Honeywell: S876A1016 Watsco: PSTD-00-005W, PSTD-00-060W |
| 24-ICM255 | Low cost open board design High power, relay output Dual function fan delay timer | Voltage: 18-30VAC N.O.: 20 Amps @ 240VAC N.C.: 20 amps @ 240VAC Time Delays Fixed On - 1 second Off - 60 seconds Dimensions: 2.5"x2.5" | A-1: 5893 Bard: 8201-056 Mars: 32393 Rheem: 42-22515-01, 02, 03 Snyder General/ICP: 1395336 |

| Part # | Features and Applications | Specifications | Replaces |
|------------------|---|---|--|
| 24-ICM270 | Dual function fan delay timer Controls the circulating fan in a heat pump, A/C and forced air systems OFF delay purges ducts of residual air ON delay allows air to reach the proper comfort level prior to energizing the fan | Voltage Range: 18-30 VAC Contact Ratings: Heat/cool speed N.O.: 20 amps @ 240 VAC N.C.: 10 amps @ 240 VAC Time Delays: Blower ON delay: 30 Seconds Blower OFF delay: 90, 120, 150, 180 seconds | Evcon: 2702-300 Rheem: 47-22827-01 47-22827-81/82/83 47-22828-01/02 Robertshaw: 695-003 |
| 24-ICM271 | Reliable solid state fan blower Specifically designed to replace popular gas furnace centers Pin selectable blower delays High power, relay output Dual function fan delay timer Controls the circulating fan in heat pump, A/C and forced air systems OFF delay purges ducts for residual air ON delay allows air to reach the proper comfort level prior to energizing the fan | Voltage Range: 18-30 VAC Contact Ratings: N.O.: 20 amps N.C.: 10 amps Time Delays: Heat ON delay: 75 Seconds Heat OFF delay: 105 seconds Cool OFF delay: 90 seconds | Carrier: 302075-3 CES0110017 CES0110018 HH84AA010 HH84AA011 HH84AA012 HH84AA013/020 P771-7002 Robertshaw: 695-100 |
| 24-ICM272 | Cooling control module with fan delay Integral low voltage terminal board with field thermostat wiring Electronic air cleaner output High power, relay output DC output for fan relays and 1st stage of electric heater control Interlock circuitry prevents 2nd and 3rd stage electric heat energization without proper fan operation | Voltage Range: 18-30 VAC Contact Ratings: N.O.: 20 amps N.C.: 10 amps Time Delays: Blower OFF delay: 60 seconds | Carrier: HK61GA001 HK61GA003 Texas Instruments: 2FD-1 |
| 24-ICM273 | Solid state output Silent operation, "no clicking" Controls the circulating fan in heat pump A/C and forced air systems OFF delay purges ducts of residual air | Voltage Range: 18-30 VAC Output: 2 amps @ 240 VAC Time Delays: Blower OFF delay: 60 seconds | EMI: 240000-969 |
| 24-ICM274 | Microprocessor-based fan blower control Built in humidity relay Manually adjustable post-purge off delay from 60-240 seconds Electronic air cleaner output | Voltage Range: 18-30 VAC Contact Ratings: Y out: 1.5 amps Fan: 2 amps Elec. Heat Relay: 30 amps @ 240 VAC Time Delays: Blower OFF delay: 60-240 seconds | EMI: 240-1764 |
| 24-ICM275 | Heavy duty heat relay Purges ducts of residual air Integral short cycle protection | Voltage Range: 18-30 VAC Contact Ratings: High: 20 amps @ 240 VAC Low: 10 amps @ 240 VAC Time Delays: Heat ON delay: 60 Seconds Heat OFF delay: 60-240 seconds Cool OFF delay: 90 seconds | Carrier: HH84AA001, HH84AA003 HH84AA005, H84AA009 HH84AA014, H84AA015 HH84AA021 Robertshaw: 695-101 |
| 24-ICM276 | Microprocessor based fan blower Inducer fan outputs Controls the circulator fan in gas/heat and A/C systems Off delay purges ducts of residual air | Voltage Range: 18-30 VAC Contact Ratings: Fan: 20 amps @ 240 VAC Inducer Fan: 2 amps Time Delays: Heat ON delay: 60 Seconds Heat OFF delay: 120, 150, 180 seconds Cool OFF delay: 90 seconds | Carrier: HK51GA003 Rheem: 47-23619-02 47-23619-03 Robertshaw: 457-23619-03 RS100-833-02 |
| 24-ICM277 | Microprocessor based fan blower For circulating fan in heat pump, A/C and forced air systems | Voltage Range: 18-30 VAC Contact Ratings: Heat/cool speed N.O.: 20 amps N.C.: 10 amps Time Delays: Blower ON delay: 7 Seconds Blower OFF delay: 65 seconds | Goodman: B1370735S |
| 24-ICM278 | Controls blower motor and inducer Combines functionality of two boards into one Microprocessor-based precision Adjustable blower off delay Compatible with 24 VAC standard thermostat Max. Operating Humidity: 95% | Terminals: - 120/240 VAC: N1-N5, S1-S5, H, L, L1, D1 - 18-30 VAC: Y, G, W, C, R, W2, X, HL, PS1, PS2 Operating Temperature: 40°F to +176°F Time Delays: - Heat ON: 60 Seconds - Heat OFF: 60-200 Seconds - Cool OFF: 40 Seconds | Carrier: HH84AA017, HH84AA018 |

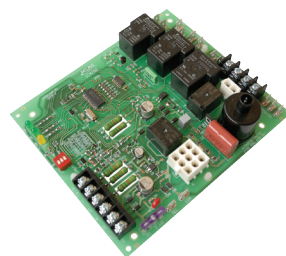
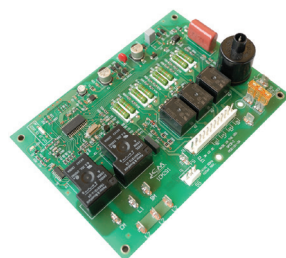
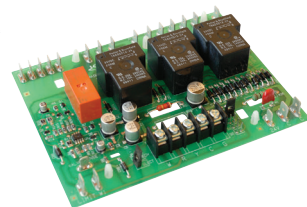


| Part # | Features and Applications | Specifications | Replaces |
|-------------------|--|--|---|
| 24-ICM280 | Low cost, direct replacement board for Goodman, Janitrol, TI, White-Rodgers and UTEC Microprocessor based design for precise timing Functions with all 24 VAC thermostats For 80+ and 90+ applications UL recognized | Voltage Range: Line (98 to 132 VAC) @ 60Hz Cool Blower: 10A, 2 HP, 240 VAC Heat: 5A, 240 VAC Inducer Motor: 4A, FLA-8.0 LRA @ 120 VAC Gas Valve: 1.5A @ 30 VAC Heat Blower on Delay: 30 seconds Heat Blower Off Delays: 90, 120 and 150 sec Cool Blower on Delay: 5 seconds Cool Blower Off Delay: 60 seconds | Goodman: B1809906/08/10/13/13S UTEC:1012-933D Texas Instruments: 41F-5 White-Rodgers: 50T35-730/743 |
| 24-ICM281 | Low cost, direct replacement board for Carrier CES011005700/01/02 Controls gas valve, ignitor, blower motor, inducer, humidifier and air cleaner Microprocessor-based for precise timing Functions with all 24 VAC thermostats Designed for 100% gas shutoff in case of ignition failure Twinning compatible with another ICM281 board | Voltage Range: Line (98 to 132 VAC) @ 60Hz Cool Blower: 10A, 2 HP, 240 VAC Heat: 5A, 1/2 HP, 240 VAC Inducer Motor: 4A, FLA-8.0 LRA @ 120 VAC Gas Valve: 1.5A @ 30 VAC Heat Blower on Delay: 40 seconds Heat Blower Off Delays: 90, 135, 180, and 225 seconds Fan (Low) On/Off: 1-second Cool Blower on Delay: 5 seconds Cool Blower Off Delay: 90 seconds | Carrier: CES0110057-00/01/02 |
| 24-ICM282A | Low cost, direct replacement for Carrier HK42F004/007/008/009/011/013/016 Controls gas valve, ignitor, blower motor, inducer, humidifier and air cleaner Microprocessor-based Designed for 100% gas shutoff in case of ignition failure Twinning compatible with another ICM282 board Diagnostic fault codes (blinking LED) to aid in troubleshooting | Voltage Range: Line (98 to 132 VAC) @ 60Hz Cool Blower: 10A, 2 HP, 240 VAC Heat: 5A, 1/2 HP, 240 VAC Inducer Motor: 4A, FLA-8.0 LRA @ 120 VAC Gas Valve: 1.5A @ 30 VAC Heat Blower On: 60 seconds Heat Blower Off: 90, 120, 150, and 180 sec Fan (Heat) On/Off: 1-second Cool On: 2 seconds Cool Off: 90 seconds with jumper JW2 uncut; 5 seconds with jumper JW2 cut | Carrier: HK-42F004/007/008/009/011/013/016 |
| 24-ICM284 | Microprocessor based Controls vent motor, blower control, hot surface ignitor and gas valve Monitors timing, trial for ignition, flame sensing and lockout Diagnostic LEDs to aid in testing/trouble-shooting | Line Voltage: 208 VAC @ 60 Hz Ignitor: 5A resistive @ 208 VAC Cool Blower: 30A, 2HP @ 240 VAC Heat Blower: 10A, .5HP @ 250 VAC Inducer Motor: 4A, 120 VAC Gas Valve: 4A @ 24 VAC Compressor: 5A resistive @ 24 VAC | York: SI-03101280000 |
| 24-ICM286 | Controls the gas valve, inducer draft motor, circulating blower and hot surface ignitor Monitors system pressure and limit switches Microprocessor based precision Twinning compatible with another ICM286 Control Board Diagnostic LEDs aid in testing and troubleshooting | Voltage Range: Line (98-132 VAC) @ 60Hz Cool Blower: 30A, 2 HP, 240 VAC Heat: 20A, 240 VAC Inducer Motor: 4A FLA, 8A LRA @ 120 VAC Ignitor: 10A FLA @ 120 VAC Humidifier: 5 amps @ 120 VAC Electric Air Cleaner: 5 amps @ 120 VAC Trial for Ignition: 7 seconds Pre-purge Time: 15 seconds Ignitor Warm Up Time: 7 seconds Post-Purge Time: 15 seconds Total Trials for Ignition: 3 (auto rest after 1 hour) Heat Blower On: 30 seconds Heat Blower Off: Selectable 90/120/150/180 seconds Fan (Heat) On/Off Delay: 1 second Cool On: 5 seconds Cool Off: 45 seconds | Goodman: PCBBF112S, B18099-26S, 0130F00005S |
| 24-ICM287 | Microprocessor based Controls inducer and blower control Monitors timing and gas valve Diagnostic LEDs to aid in testing/trouble-shooting | Line Voltage: 120 VAC @ 60 Hz Control Voltage: 24 VAC @ 60Hz Heat Blower: 10A @ 120 VAC Cool Blower: 30A @ 120 VAC Inducer Motor: 30A, 120 VAC | Goodman: B18099-04 |
| 24-ICM288 | Microprocessor-based design Monitors pressure, roll-out and limit switches Controls gas valve, inducer draft motor, circulating blower and hot surface ignitor Reverse polarity detection Twinning compatible with other ICM288 control boards Diagnostic LEDs for testing/troubleshooting | Voltage Range: Line 98-132 VAC @ 60HZ Ignitor: 5A, 120 VAC Cool Blower: 10A, 2HP, 240 VAC Heat: 5A, 1/2 HP, 250 VAC Inducer Blower: 4A, 120 VAC Gas Valve: 1A, 24 VAC Humidifier Motor: 0.5A, 24 VAC Electronic Air Cleaner: 1A, 120 VAC | Rheem 62-24084-82 |

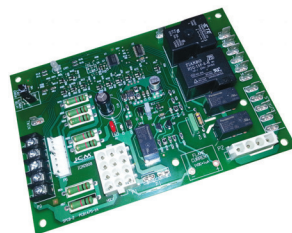
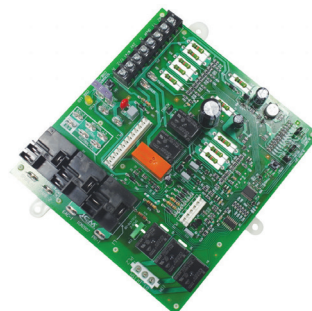
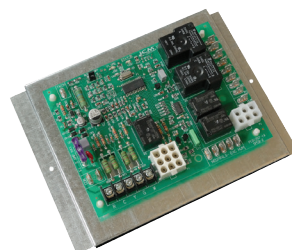




| Part # | Features and Applications | Specifications | Replaces |
|-------------------|--|---|---|
| 24-ICM289 | Low cost, direct replacement board for Lenox Controls inducer fan motor, blower fan and monitors limit switches. Microprocessor based design Functions with all 24 VAC thermostats | Voltage Range: Line (98 to 132 VAC) @ 60 Hz Cool Blower: 20A @ 120 VAC Heat Blower: 20A @ 120 VAC Inducer Motor: 5A @ 120 VAC Cool Blower On Delay: 1 second Cool Blower Off Delay: 1 second Heat Blower On Delay: 45 seconds Heat Blower Off Delay: 90, 150, 210, 270 seconds | Lennox: 45K98, 45K48, 68H08, 65K29, G20, G23, G26, 023, 0F23, OHR, BCC1, BCC2, BCC3 |
| 24-ICM291 | Direct Spark Ignition (DSI) control board Microprocessor-based Controls combustion, blower and indoor motor; spark ignitor and the gas valve Monitors timing, trial for ignition and lockout 100% lockout safety feature Compatible with LP or natural gas Status LED for fault codes to aid in troubleshooting | Control Voltage: 24 VAC (18-30 VAC), 60Hz Line Voltage: 208/230 VAC, 60Hz Power Consumption: 0.3A plus gas valve current @ 24 VAC Operating Temperature: -40°C(-40°F) to 75°C(176°F) Timing: Pre-purge: 45 seconds Trial for Ignition: 5+2 seconds Retry Period: every 20 seconds for 15 minutes Lockout: manual reset Post-purge: 45 seconds Inputs: Power: RT and C Thermostat Interface: R, W and G Safety Switches: RS, LS and CS Combustion Motor Hall Effect Sensor Flame Sensing Outputs: Spark Gas Valve: GV Combustion Motor: BM Indoor Fan Motor: IFO LED Indicators: Red LED: Steady ON - Normal operation Flashing - Fault codes | Carrier: LH33WP003/3A |
| 24-ICM292 | Direct Spark Ignition (DSI) control board Microprocessor-based Controls Induced Draft and indoor blower motors; humidifier output, spark ignitor and gas valve Monitors timing, trial for ignition and lockout 100% lockout safety feature Compatible with LP or natural gas Status LED for fault codes to aid in troubleshooting | Control Voltage: 24 VAC (18-30 VAC), 60Hz Line Voltage: 115/23 VAC, 60Hz Power Consumption: 0.3A plus gas valve current @ 24 VAC Operating Temperature: -40°C(-40°F) to 75°C(176°F) Timing: Pre-purge: 20 seconds Trial for Ignition: 6.5 seconds Number of Trials: 4 (2+2, 3 minutes apart) Lockout: 1 Hour Post-purge: dip switch selectable 90, 120, 160, 180 seconds apart Inputs: Power: SEC and COM Thermostat Interface: R, W, Y and G Safety Switches: Limit and Vent Combustion Motor Hall Effect Sensor Flame Sensing Outputs: Spark Gas Valve: GV Induced Draft Motor Multi speed indoor blower motor Humidifier LED Indicators: PWR(green): Steady ON - power to the board OK(green): Steady ON - no fault Flashing - fault code Flame(yellow): Steady On - flame sensed, flashing two times -flame out of sequence | Rheem: 62-24140-04 |
| 24-ICM2801 | Controls vent motor, blower control, hot surface ignitor and gas valve Monitors timing, trial for ignition, flame sensing and lockout Microprocessor-based Reverse polarity protection 100% lockout safety feature Compatible with LP or natural gas Status LED for fault codes to aid in troubleshooting Twinning compatible with another ICM2801 control | Line Voltage: 98-132 VAC @ 60HZ Ignitor: 5A, 120 VAC Cool Blower: 10A, 2HP, 240 VAC Heat: 5A, .5 HP, 250 VAC Inducer Blower: 4A, 120 VAC Gas Valve: 1A, 24 VAC | York/Evcon: 7990-319 |

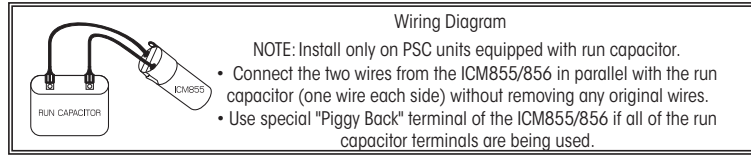


| Part # | Features and Applications | Specifications | Replaces |
|--------------------|--|--|---|
| 24-ICM2804 | Low cost form, fit and functional replacement for Carrier: CES0110074-01 Microprocessor-based Controls vent motor and blower control Monitors limit switch, pressure switch and gas valve 100% lockout safety feature Compatible with LP or Natural Gas Status LED for fault codes to aid in troubleshooting | Electrical: - Line Voltage Range: 98-132 VAC @ 60Hz - Cool Blower: 20A, 2 HP, 240 VAC - Heat: 10A, 240 VAC - Inducer Motor: 4A FLA, 8A LRA @ 120 VAC Timing: - Inducer Pre-Purge Time: 1 second - Heat Blower On Delay: 45 seconds - Heat Blower Off Delays: 120 or 180 second - Cool Blower On Delay: 1 second - Cool Blower Off Delay: 1 second | Carrier: CES0110074-00, CES0110074-01 |
| 24-ICM2805A | Low cost form, fit and functional OEM replacement control board for Nordyne: 903106-Kit For use with G3, G4, G5, G6, M2 and M3 furnace modules Controls gas valve, inducer draft motor, circulating blower and hot surface ignitor Monitors timing, trial for ignition, flame sensing, lockout, plus pressure, rollout and limit switches Microprocessor-based precision Twinning compatible with another ICM2805A furnace control Diagnostic LEDs aid in testing and troubleshooting | Line Voltage Range: 120/240 VAC @ 60 Hz Ignitor: 5A, 120 VAC Cool Blower: 10A, 2HP, 240 VAC Heat: 5A, 1/2 HP, 250 VAC Inducer Blower: 4A, 120 VAC Gas Valve: 1A, 24 VAC Humidifier Motor: 0.5A, 24 VAC Electronic Air Cleaner: 1A, 120 VAC | Nordyne: 903106-Kit |
| 24-ICM2807 | Controls gas valve, ignitor, blower motor, inducer, humidifier and air cleaner Microprocessor-based precision Designed for 100% gas shutoff in case of ignition failure Twinning compatible with another ICM2807 control Reverse polarity protection Secondary brownout voltage protection Compatible with 24 VAC standard thermostat Continuous Blower Speed Jumper Limit Switch Lockout Time Limit Switch Lockout After Power Interruption Self-Diagnostics Provides diagnostic | Ambient Temperature - Operating: -40°F to 176°F - Humidity: 5% to 95% R.H. (non-condensing) @ +55°F Voltage Range: Line (98 to 132 VAC) @ 60Hz Ignitor: 5A @ 120 VAC Cool Blower: 10 HP, 120 VAC Low Heat: 5A, 1/2 HP, 120 VAC High Heat: 10A, 1 HP, 120 VAC Inducer Motor: 4A, FLA-8.0 LRA @ 120 VAC Gas Valve: 1.5A @ 30 VAC EAC: 1A@120 VAC Humidifier: 0.5A & 24 VAC | Carrier: HK42FZ005, HK42FZ010, HK42FZ015, HK42FZ017 |
| 24-ICM2808 | The ICM2808 is a low cost fit, form and functional replacement for the York S1-331-03010000 and S1-331-02956000 furnace control boards. Controls gas valve, Ignitor, blower motor, Inducer, humidifier, and air cleaner. Microprocessor-based precision Designed for 100% gas shutoff in case of ignition failure Twinning compatible with another ICM2808 control Reverse polarity protection Secondary brownout voltage protection Compatible with 24 VAC standard thermostat Provides dual-color diagnostic LED to aid in troubleshooting | ELECTRICAL RATINGS Voltage Range: Line (98 to 132VAC) @ 60Hz Control Voltage Range: 18-30VAC @ 60Hz Relay Outputs: Meets or exceeds O.E.M. board TIMING Heat Blower On Delay: 30 seconds Heat Blower Off Delay: 90-180 seconds ENVIRONMENT Ambient Temperature: - Operating: -40°F to 176°F - Storage: -40°F to 185°F Humidity: 5% to 95% R.H. (non-condensing) @ +55°F | York: S1-331-03010000, S1-331-02956000 |



Applications:

- Low voltage situations.
- Tight or hard starting compressors.
- Use on any single phase A/C & refrigeration unit.



| Part # | Features & Applications | | Specifications | X-Ref |
|------------------|--|---|--|---|
| 24-ICM855 | <ul style="list-style-type: none"> • PTC - Positive Temperature Coefficient technology. • For PSC units with existing run capacitor only! <ul style="list-style-type: none"> • OEM approved. • Quick recycling. | <ul style="list-style-type: none"> • Self-adjusting to voltage fluctuations. • Easy to install, 2 wires (clips or screws). • Boosts starting torque. • Most economical. | <ul style="list-style-type: none"> • Voltage: 115 to 288 VAC. • Range: 1/2 to 10 HP • Recommended 1.5HP | A-1: WXS-5 MARS: 32701, 35701 Supco: SPP-5 Wagner/DiversiTech: DST-5 |
| 24-ICM856 | | | <ul style="list-style-type: none"> • Voltage: 115 to 288 VAC. • Range: 1/2 to 10 HP • Recommended 2.5HP | A-1: WXS-6 MARS: 32702, 35702 Supco: SPP-6 Wagner/DiversiTech: DST-6 |
| 24-ICM857 | For single-phase commercial and domestic capillary refrigeration systems and freezers | <ul style="list-style-type: none"> • Pre-wired for fast installation • Overload: 12A • 145-175 mfd | <ul style="list-style-type: none"> • Voltage: 120 to 180VAC. • Range: 1/12HP to 1/5HP | MARS: 32481 Supco: RCO810 |
| 24-ICM858 | For single-phase commercial and domestic capillary refrigeration systems and freezers | <ul style="list-style-type: none"> • Pre-wired for fast installation • Overload: 22A • 243-292 mfd | <ul style="list-style-type: none"> • Voltage: 120 to 180VAC. • Range: 1/4HP to 1/3HP | MARS: 32741 Supco: RCO410 |
| 24-ICM859 | For single-phase commercial and domestic capillary refrigeration systems and freezers | <ul style="list-style-type: none"> • Pre-wired for fast installation • Overload: 30A • 243-292 mfd | <ul style="list-style-type: none"> • Voltage: 120 to 180VAC. • Range: 1/3HP to 1/2HP | Supco: RCO210 |

Current Sensing Hard Start Kits

By monitoring the compressor "current" upon start-up, RapidStart® is able to engage the hard start capacitor for precisely the correct amount of time, ensuring maximum starting torque without the risk of supplying too much current into the start winding. A timed safety circuit is provided in the event the motor fails to start within 2 seconds. Current sensing hard start precisely increases starting torque.



| Part # | Features & Applications | | Specifications | X-Ref. | |
|------------------|--|---|--|--------------------|------------------------------|
| 24-ICM803 | <ul style="list-style-type: none"> • Operates from 95 to 288 VAC. • Max input voltage: 502 VAC. • Patented current sensing circuitry. • Self-adjusting to voltage fluctuation. | <ul style="list-style-type: none"> • Easy to install, 2 wires. • OEM approved. • Solid-state circuitry. • Boosts starting torque. • Disengages upon start. | <ul style="list-style-type: none"> • Ideally suited for 1/2 thru 3 Hp. • 88 to 106 Mfd. capacitor. | Supco • SPP-8 | Kickstart • TO5 • TO-5 |
| 24-ICM805 | | | <ul style="list-style-type: none"> • Ideally suited for 2 thru 5 Hp. • 145 to 175 Mfd. capacitor. | Kickstart • KS1 | |
| 24-ICM810 | | | <ul style="list-style-type: none"> • Ideally suited for 3 1/2 thru 10 Hp. • 243 to 292 Mfd. capacitor. | N/A | |

Voltage Sensing Hard Start Kits

ICM's differential voltage sensing products employ patented circuitry which monitors differential compressor auxiliary voltage, determines the state of the motor and precisely engages and disengages the start capacitor. A timed safety circuit is provided in the event the motor fails to start within 2 seconds.



| Part # | Features & Applications | Specifications | | X-Ref. |
|-------------------|--|---|---|--|
| 24-ICM850 | <ul style="list-style-type: none"> • Increases starting torque up to 500%. • Ensures precise starts. • Reduces inventory. • Not affected by ambient temperature. • Recycles instantly (less than one sec.). • Multi-voltage operation... either 115 or 240 VAC motors. • Fuse protection. • Not effected by voltage or current fluctuations. | <ul style="list-style-type: none"> • Voltage: 90 to 277 VAC. • Max input voltage: 390 VAC. • Recommended range: Up to 1 1/2 Hp applications. | <ul style="list-style-type: none"> • Oper. Temp. Range: -40°C to +65°C • 43 to 52 Mfd 330 V Capacitor. | <ul style="list-style-type: none"> • Supco: SPP-5 • Mars: 32701 • A-1: WXS-5 |
| 24-ICM860 | | <ul style="list-style-type: none"> • Voltage: 90 to 277 VAC. • Max input voltage: 390 VAC. • Recommended range: 2 to 5 Hp. | <ul style="list-style-type: none"> • Oper. Temp. Range: -40°C to +65°C • 88 to 106 Mfd 330 V Capacitor. | <ul style="list-style-type: none"> • Supco: SPP-6 • Mars: 32702 • A-1: WXS-6 |
| 24-ICM866U | | <ul style="list-style-type: none"> • Multi-voltage operation – 115 or 230 VAC motors • 145-175 µF @ 330V | <ul style="list-style-type: none"> • Recommended Range: 1/12 to 5HP application • UL Recognized | Supco: SPP5, SPP6, SPP5E, SPP6E, SPP7E, SPP8E, SPP9E, SPP10E Kickstart: KS1, TO-5, KS8 5-2-1: CSR-U1, CSR-U2, CSR-U3 Watsco: WSX1 MARS: 32708, SS1, SS5, 32703, 32704, 32701, 32702 Diversitech: DST-5, DST-6 |

Gas Ignition & Oil Primary Controls

Gas Ignition Controls

| Part # | Features and Applications | Specifications | Replaces |
|------------------|---|---|--|
| 24-ICM283 | Hot Surface Ignition (HSI) Module Single/Dual rod sensing capabilities For gas fired furnaces, boilers and other heating appliances Switch selectable lockout times Works with both Natural & LP gas systems Diagnostic LED to aid in troubleshooting | Input Voltage: 120 & 24 VAC, 60Hz - HSI: 120V, 5A max - Valve: 24V, 2A max - Total: 24V Load = 0.4 + valve load Pre-purge time: 32 seconds Trial time: 4 or 7 seconds (switch selectable) Ignition trials to lockout: 1 or 3 (switch selectable) Flame sense: single rod or dual rod Gas type: Natural or LP | Honeywell: S8910U-1000 Robertshaw: H5780 White Rodgers: 50E47, 50F47 |
| 24-ICM290 | Universal intermittent pilot gas ignition control Provides ignition sequence, flame monitoring and safety shutoff for single/dual rod intermittent pilot control applications Switch selectable pre-purge and ignition trial times with permanent lock Works with or without vent damper connected | Control Voltage: Line 24V (18-30VAC) 50/60Hz Anticipator setting: 0.1A + valve load @ 24VAC Trial for ignition: 15 or 90 seconds (switch selectable) LEDs: - Green status LED provides system status and error codes - Yellow flame LED indicates flame presence and flame strength Operating temperatures: min. ambient temp. rating of -40°F (-40°C) and max. of 176°F (75°C) Relative humidity: 0% to 95% non condensing | Honeywell: S8610U (and compatible Camstat, Fenwal, HSC, Penn-Johnson, Robertshaw and White Rodgers models) |



24-ICM283



24-ICM290

Oil Primary Control



Features

Controls oil burner, oil valve (if desired) and the ignition transformer in response to a call for heat .

- Solid state flame sensing circuit .
- LED on terminal strip indicates system lockout.
- Enclosed safety switch with external reset button.
- Mounts on standard 4" x 4" junction box; select models may be mounted directly on burner housing.
- 69-45610 Cadmium Sulfide Flame Detector and 24 VAC thermostat required.
- Direct replacement for popular competitive models.

Specifications

Ignition Type: Intermittent

Timing, Safety Switch: 15, 30 or 45 seconds

Mounting Bracket: For mounting on a standard 4" x 4" junction box or direct mounting on burner housing.

Electrical Rating: Contacts (full load):

7.4 A @ 120 VAC; 3.7 A @ 240 VAC

Electrical Rating: Contacts (locked rotor):

44.4 A @ 120 VAC; 22.2 A @ 240 VAC

Dimensions:

• 4 3/8 in. high x 4 1/8 in. wide x 2 1/2 in. deep

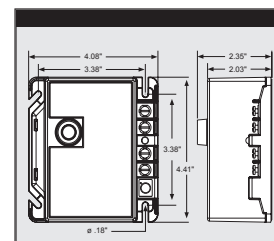
• 111 mm high x 104 mm wide x 64 mm deep

Temperature Range: -30°F to +130°F

Approvals - Underwriters Laboratories Inc

Oil Primary Control - Intermittent Ignition

| Part # | Safety Timing | Replaces |
|-------------------|---------------|--|
| 24-ICM1501 | 15 Sec | Honeywell: R8184G4066, R8184G1161, R8184G1294 |
| 24-ICM1502 | 30 Sec | Honeywell: R8184G4074, R8184G1179, R8184G1302, R8184G4033 |
| 24-ICM1503 | 45 Sec | Carlin: 48245 - Tempstar/Heil: 1147017 - White Rodgers: 668-401 Honeywell: R8184G4009, R8184G1138, R8184G1427, R8184G4025 |



Wolverine® Universal Hot Surface Igniter

Wolverine® hot surface igniters feature protective, dynamic, and informative packaging. Wolverine® hot surface igniters are 100% tested and completely reliable. They are compatible with all OEM furnaces. Universal hot surface igniters allow a contractor to reduce truck stock and replace hundreds of OEM igniters with just one SKU.

| Part # | Description | Order Mult |
|-----------------|---|------------|
| IGN-2 | Wolverine Hot Surface Igniter by TrueStart, Universal, Silicon Nitride | 6 |
| IGN-2-6P | Wolverine Hot Surface Igniter by TrueStart, Universal, Silicon Nitride - Contractor Pack, pack of 6 | 1 |

NEW!!



IGN-2

TrueStart™ Hot Surface Igniters

TrueStart® hot surface igniters feature protective, dynamic, and informative packaging. TrueStart® hot surface igniters are 100% tested and completely reliable. They are compatible with all OEM furnaces. TrueStart® hot surface igniters are available as direct replacement for OEM (silicon carbide) or as a universal igniter (silicone carbide or silicon nitride). Universal hot surface igniters allow a contractor to reduce truck stock and replace hundreds of OEM igniters with just one SKU.

| Part # | Description | Order Mult |
|---------------|--|------------|
| IGN-1R | TrueStart Hot Surface Igniter, Universal, Round, Silicon Nitride | 6 |

NEW!!



IGN-1R

Direct Replacement Igniters

TrueStart® hot surface igniters feature protective, dynamic, and informative packaging. TrueStart™ hot surface igniters are 100% tested and completely reliable. They are compatible with all OEM furnaces. TrueStart® hot surface igniters are available as direct replacement for OEM silicon carbide igniters.

| Part # | Description | Order Mult |
|----------------|--|------------|
| IGN-401 | TrueStart Hot Surface Igniter, Direct Replacement, Silicon Carbide | 6 |
| IGN-402 | TrueStart Hot Surface Igniter, Direct Replacement, Silicon Carbide | 6 |
| IGN-403 | TrueStart Hot Surface Igniter, Direct Replacement, Silicon Carbide | 6 |
| IGN-409 | TrueStart Hot Surface Igniter, Direct Replacement, Silicon Carbide | 6 |

NEW!!



IGN-401



IGN-402



IGN-403



IGN-409

Universal Silicon Carbide Igniters

TrueStart® hot surface igniters feature protective, dynamic, and informative packaging. TrueStart™ hot surface igniters are 100% tested and completely reliable. They are compatible with all OEM furnaces. TrueStart® hot surface igniters are available as a universal silicon carbide igniter.

| Part # | Description | Order Mult |
|----------------|---|------------|
| IGN-001 | TrueStart Hot Surface Igniter, Universal, Silicon Carbide | 6 |

NEW!!



IGN-001

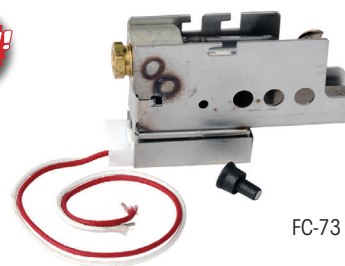
Ignition Accessories / Spray Paint

TrueStart FC-74® Pilot Burners

TrueStart® pilot burners are a direct replacement for Carrier/BDP pilot burners. Available in 2 wire and 3 wire versions. The 3 wire is also field convertible to a 2 wire. TrueStart® pilot burners are not manufactured by Carrier Corporation.

| Part # | Description | Order Mult |
|--------------|---|------------|
| FC-73 | 2 Wire Pilot - Replacement for the Carrier 732. 2 wire pilot burner commonly known as Carrier/BDP part number LH33JZ053 | 1 |
| FC-74 | 3 Wire Pilot - Replacement for the Carrier 740A. 3 wire pilot burner commonly known as Carrier/BDP part number LH680005 | 1 |

NEW!!



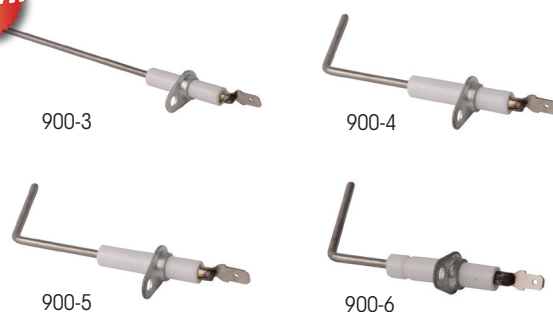
FC-73

TrueStart™ Hot Surface Igniters

TrueStart® flame sensors are a direct replacement for Carrier/BDP flame sensors, cross reference part numbers are detailed in the item descriptions. TrueStart® flame sensors are not manufactured by Carrier Corporation.

| Part # | Description | Order Mult |
|--------------|---|------------|
| 900-3 | TrueStart FLAME SENSOR replaces Carrier LH33WZ516 | 1 |
| 900-4 | TrueStart FLAME SENSOR replaces Carrier LH33WZ517 | 1 |
| 900-5 | TrueStart FLAME SENSOR replaces Carrier LH33WZ518 | 1 |
| 900-6 | TrueStart FLAME SENSOR replaces Carrier LH33WZ520 | 1 |

NEW!!

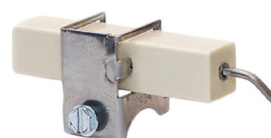


TrueStart® Spark Electrode

Replacement pilots and accessories for selected Carrier/BDP units. Full 2 year warranty. Made in America.

| Part # | Description | Order Mult |
|--------------|---|------------|
| FC-87 | Spark Electrode -Replacement for the Carrier/BDP 871 Spark Electrode commonly known as Carrier/BDP part number LH680512 | 1 |

NEW!!



FC-87

High Heat Spray Paint

High Heat Spray Paint

An ultra high temperature coating formulated to resist temperatures up to 1300°F. Great for use on boilers, furnaces, steam pipes, chimney collars, compressors and engine manifolds. Product meets most recent VOC legislation and is currently compliant.

| Part # | Description | Order Mult |
|----------------|---|------------|
| 799-040 | High Heat Spray Paint - Aluminum - 12 oz. | 6 |
| 799-041 | High Heat Spray Paint - Black - 12 oz. | 6 |

NEW!!



Features:

- Fast easy installation - less than 30 min.
- Low conductivity - high efficiency.
- High sound absorption.
- Lightweight: 5% of conventional firebrick.
- High heat resistance (up to 2300°F).
- Superior to steel brick or castable chambers.
- Individually sealed & packaged.
- Comes with instructions.
- Wall thickness 1/2" nominal.

Wet Paks

- Seamless design complete with a bottom.
- Pliable yet self supporting in a vertical position.



Wet Pak Sheets

| Part # | G.P.H | Inside Diameter | Dimensions | Weight |
|-------------------|-------|------------------|---|-----------|
| 63-1WETPAK | 1.25 | Flat Sheet Sizes | 14" x 48" x 0.5" | 9.0 lbs. |
| 63-2WETPAK | 2.50 | | 1 pc. 14" x 48" x 0.5" & 1 pc. 16" x 16" x 0.5" | 10.0 lbs. |



Wet Pak Sheet

Preshaped Wet Pak

Preshaped Wet Paks

| Part # | G.P.H | Inside Diameter | Outside Diameter | Height | Weight |
|--------------------|--------------|-----------------|------------------|--------|----------|
| 63-09WETPAK | 0.50 to 0.75 | 8" | 9" | 15.5" | 4.0 lbs. |
| 63-12WETPAK | 1.25 to 1.50 | 11" | 12" | 15.5" | 6.5 lbs. |
| 63-13WETPAK | 1.50 to 2.00 | 12" | 13" | 15.5" | 7.0 lbs. |
| 63-14WETPAK | 2.00 to 2.50 | 13" | 14" | 15.5" | 7.5 lbs. |
| 63-16WETPAK | 2.50 to 2.75 | 15" | 16" | 15.5" | 8.5 lbs. |

Pre Dried

- Formed to a uniform thickness & density while maintaining a hardness which has exceptional handling strength.
- Easy to cut means more versatility in nozzle opening placement.

Pre Dried

| Part # | G.P.H. | Inside Diameter | Outside Diameter | Height | Weight |
|----------------|--------------|-----------------|------------------|--------|-----------|
| 63-D09 | 0.50 to 0.75 | 8" | 8" | 12.25" | 2.25 lbs. |
| 63-DP09 | 0.65 to 0.85 | 9" | 10.5" | 15" | 5.0 lbs. |
| 63-DP11 | 1.00 to 1.25 | 11" | 12.5" | 15" | 6.5 lbs. |
| 63-D13 | 1.50 to 2.00 | 12" | 13" | 14" | 4.25 lbs. |
| 63-D14 | 2.00 to 2.50 | 13" | 14" | 16" | 5.0 lbs. |
| 63-DP13 | 1.35 to 1.75 | 13" | 14.5" | 15" | 8.25 lbs. |
| 63-DP20 | 2.25 to 3.00 | 12" x 19.5" | 14.5" x 22" | 16" | 17 lbs. |

OEM Replacements

| | | | | | |
|---------------|------------------|---------------|---------------|--------|--------|
| 63-D20 | Grimsby 97 - 77 | 10.5" x 10.5" | 11.5" x 11.5" | 12" | 3 lbs. |
| 63-D21 | Grimsby 117 - 77 | 10.5" x 10.5" | 11.5" x 11.5" | 12" | 3 lbs. |
| 63-D24 | Grimsby W - 196 | 9.125" x 9" | 10.125" x 10" | 10.25" | 3 lbs. |

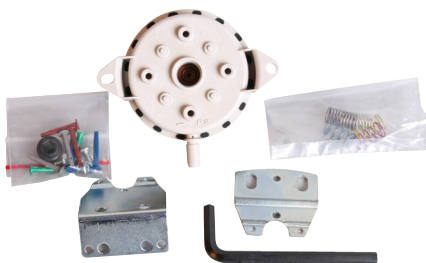


63-DP09, DP11, DP13 & DP15 Models

63-DP16 & DP20 Models

Specialty Products

Universal Air Switch



| Part # | Description |
|-----------------------|-------------|
| AS-NS2-0000-03 | Air Switch |

The NS2 Switch has a glass-filled polycarbonate housing containing a sensing diaphragm and an integral snap-acting switch with three male 90° quick-connect terminals. The switch can be actuated by a pressure or vacuum air flow or the differential between two air flows. The field adjustable set point range of this switch is 0.10"w.c. to 10.0"w.c. Using the switch accessories contained in this kit, the NS2 switch can be applied to a wide variety of residential and light commercial HVAC applications.

Kit Includes:

- (1) FIELD ADJUSTABLE NS2-0000-00 SWITCH
- (1) BLACK SET POINT ADJUSTMENT SCREW
- (1) HEXAGON KEY WRENCH
- (5) COLOUR-CODED SPRINGS
- (4) COLOUR-CODED ORIFICES
- (1) HALF STRAP MOUNTING BRACKET
- (1) ANGLE BRACKET
- (1) MOUNTING SCREW FOR OPTIONAL BRACKETS
- (2) #6-3/8 MOUNTING SCREW FOR OPTIONAL BRACKETS

Operating Range - .10"w.c. to 10"w.c.

Max Pressure Rating - 14"w.c.

Mounting - vertical or custom angle

Operating Temp. - -40°C to 88°C

Sample Line Connections - Black positive, Gray negative

Sample Medium - Air and by-products of combustion

that will not degrade silicone or polycarbonate

Product Life - 100,000 Cycles

Universal Humidifier Solenoid



| Part # | Description |
|-----------------|-------------------------------|
| 71-UHS24 | Universal Humidifier Solenoid |

Introducing the first universal solenoid replacement. This one unit will replace over 32 different direct OEM solenoids in the field. Just wrench in the appropriate fittings on the inlet and outlet, and even change water flow from left to right or right to left. Replaces many Aprilaire, General, Honeywell, Skuttle, and many other models for a fraction of the cost.

Kit Includes:

- SOLENOID
- 1/4" COMPRESSION x 18" MPT WITH FILTER SCREEN
- 3/16" BARB x 1/8" MPT
- 1/8" MPT x 1/4" COMPRESSION
- 1/8" MPT x 5/16" COMPRESSION
- 1/4" INSERT (FOR PLASTIC TUBE)
- 1/4" DELRIN SLEEVE (FOR PLASTIC TUBE)

Cross Reference

Aprilaire - #4040

General - #990-53

Honeywell - #32001639-002

Skuttle - #A01-0814-148

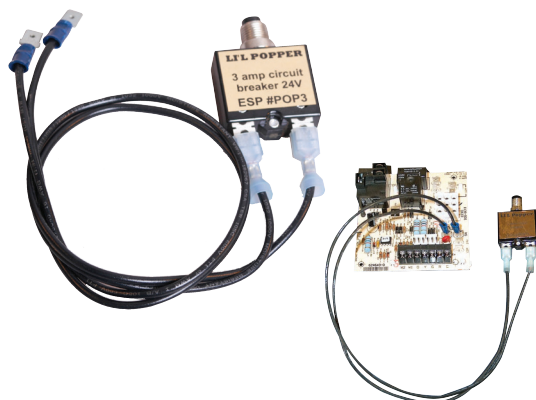
Easy Leveler



| Part # | Description |
|----------------|-------------------------|
| 79-EL10 | Adjustable furnace legs |

Revolutionary furnace leveling system created for the perfectionist. Four sturdy bolt-adjusted leg extensions supplied with mounting materials. Simply turn the lag bolted insert clockwise or counter clockwise to raise or lower each corner of the furnace

LI'L Popper



LI'L Popper control circuit breaker saves the technician dozens of blown fuses while he diagnoses control circuit failures. Simply plug the leads in to the ATC fuse receptacle on the board, and manually reset the LI'L Popper each time the breaker blows. Has a quick setting thermal cut out. Self adhering backing allows the contractor to leave the unit on the job site overnight if he is out of fuses. Free counter display by request. Alligator clip versions are available.

Control Board Circuit Breaker

| Part # | Description |
|----------------|-------------------------------------|
| 12-POP3 | 3 Amp control board circuit breaker |
| 12-POP5 | 5 Amp control board circuit breaker |

Furnace Mounting Blocks

Each furnace mounting block can support 40% more weight than competitive products – over 500 pounds! Easy peel and stick installation

| Part # | Description | Order Mult |
|-------------|-------------------------|------------|
| FB-1 | Furnace Mounting Blocks | 72 |

NEW!!



FB-1

Boiler Bracket

Our boiler bracket works well with all wall hung boilers and tankless hot water heaters available.

| Part # | Description | Order Mult |
|-----------------|--------------------------|------------|
| QSBB1000 | Boiler Bracket Wall Hung | 1 |
| QSBB2000 | Boiler Bracket Leg Kit | 1 |

NEW!!



QSBB1000



QSBB2000



QUICK SWIVEL FLUSH MOUNT W/ "H" BRACKET

Our Quick Swivel is made of 14-gauge steel able to hold 200 lbs. The swivel allows for 360° rotation for setting the perfect direction of air flow.

| Part # | Description | Order Mult |
|-----------------|--------------------------------|------------|
| QSWI3000 | Swivel Flush H Bracket | 1 |
| QSWI3001 | Swivel Flush H Bracket 36" Spd | 1 |
| QSWI3002 | Swivel Flush H Bracket 17" Spd | 1 |

NEW!!



QSWI3000

QUICK SWIVEL FLUSH MOUNT W/"I" BRACKET

Our Quick Swivel is made of 14-gauge steel able to hold 200 lbs. The swivel allows for 360° rotation for setting the perfect direction of air flow.

| Part # | Description | Order Mult |
|-----------------|-------------------------------|------------|
| QSWI4000 | Swivel Flush w/Bracket | 1 |
| QSWI5000 | Swivel Flush Heavy Duty | 1 |
| QSWI6000 | Swivel Flush w/2 "I" Brackets | 1 |

NEW!!



QSWI4000



Rubberized Cork Insulation Tape



Wraptite Rubberized Cork Insulation Tape

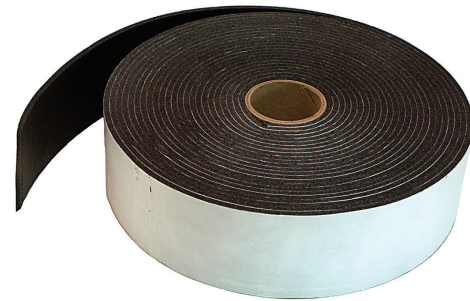
Formulated to provide insulation and to prevent condensation on hot or cool pipes, fittings and tubing used in heating, air conditioning, refrigeration and plumbing applications. Cork Insulation Tape adheres well to most clean, dry surfaces and to itself, making it possible to apply more than one layer without adding fasteners or adhesives.

It is sufficiently soft and pliable enabling it to be molded around most fittings or connections. The material retains its flexibility and adhesion after prolonged exposure to UV and over a service temperature range of -29°C to 88°C (-20°F to 190°F). Cork Insulation Tape is black in colour and has a grainy, rubber-like consistency which is non-toxic and non-asbestos.

Cork Tape

| Part # | Description |
|-----------------|----------------------|
| 84-PT-30 | 1/8" x 2" x 30' Roll |

Foam Insulation Tape



Wraptite Foam Insulation Tape

Foam Insulation Tape is designed to seal, insulate and isolate vibration in air conditioning and refrigeration applications. The soft, flexible, closed cell sponge tape with paper covered self-adhesive backing seals out air and moisture while reducing heat loss or transfer. Cold water pipes, valves, chilled water and refrigeration lines can be wrapped to prevent sweating or condensation while hot water pipes and pipe heaters can be wrapped to insulate against heat loss.

Easily applied by hand, Wraptite Foam Insulation Tape adheres well to most clean, dry surfaces and to itself, making it possible to apply more than one layer. The formulated operating temperature of Wraptite Foam Insulation Tape is between -34°C to 82°C (-30°F to 180°F) with the ability to intermittently tolerate temperature of 98°C (210°F).

Foam Tape

| Part # | Description |
|-----------------|----------------------|
| 84-FT-30 | 1/8" x 2" x 30' Roll |

Slugs & Cords



Wraptite Slugs & Cords

Sealing slugs & cord are soft, permanently pliable, water-resistant sealants having a wide variety of applications. The product has the unique quality of retaining the same consistency throughout its application range of -7°C to 60°C (20°F to 140°F). Non-asbestos and non-hardening, remains flexible to -7°C (20°F).

Sealing slugs & cords are used widely in the air conditioning and refrigeration industries to seal around outer cases, behind hinges and under breaker strips. They can be used to seal out air or moisture around utility panels, cables, ducts, window frames and metal joints. This product adheres to metal, wood, glass, plastic and most clean surfaces to provide an effective barrier against water, moisture, dirt and dust. It is non-staining, non-bleeding, odorless and can be painted.



Slugs & Cords

| Part # | Description |
|------------------|------------------|
| 84-PC-30 | 3/8" x 25' Cord |
| 84-PS-30 | 2 lb. Slug |
| 84-PS30-B | 50 lb. Bulk Slug |



Solder Paste Flux

Solder Paste Flux

Clean fit solder paste flux is used in all industries and is a non-aggressive formula used to sweat copper and brass fittings. Not for electronic use unless so stated. The all purpose formula stays stiff in hot weather and stays soft and sticky, even in cold weather.

Solder Paste Flux

| Part # | Description |
|-----------------|---|
| 61-70705 | 1 lb. tub. |
| 61-71030 | 2 oz. (carded) |
| 61-71031 | Solder paste flux kit: includes 2 oz. flux, abrasive cloth, acid brush. |



Solder Paste Flux

61-71030
Illustrated

Cool Gel Spray

Heat dissipating spray helps prevent heat damage to components and surrounding materials during soldering, brazing, and welding. It protects painted and finished surfaces from discoloration due to adjacent torch operations. This product also reduces the danger of fire to surrounding surfaces such as studs, drywall, and insulation. The unique non-staining gelled formula sticks to surfaces without dripping or running off and leaves no residue. Safe, nontoxic, and odorless spray liberally on adjacent surfaces needing protection. The spray pattern is adjustable from stream to mist. One quart spray bottles sold in cases of 12.



| Part # | Description |
|-----------------|----------------------|
| 15-11509 | Cool Gel Spray 12/cs |

Bloc-It Paste

Heavy paste effectively absorbs surface heat and protects adjoining surfaces that may be damaged by excessive heat. Typically used to protect rubber, plastic, distortion, painted and finished surfaces during soldering, brazing or welding. Safe to use, Bloc-It is nontoxic, harmless to skin, odorless, and does not contain asbestos. Wipe off with cloth or wash with water, Bloc-It will not leave stains. 10 oz. tubes sold in cases of 24.



| Part # | Description |
|-----------------|---|
| 15-11511 | Bloc-It Heat Absorbing Paste - 10oz 12/cs |

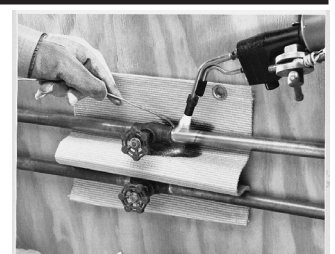
Heat Shields

Torch-Guard Solder Heat Shield

Torch-Guard's high strength (asbestos free) silica-based woven fibre stands up to and blocks intense heat to ensure flame resistance and liability protection. Flexible and easy to work with, Torch Guard provides heat resistance up to 2000°F or 1500°F continuous use. Soak Torch Guard in water and it may be used for higher temperatures particularly when folded over.

Applications
• Shield studs, walls, floors and other surfaces from flames, sparks or molten splash during soldering and brazing installations.

Heat Resistant to 2000°F
& Flexible



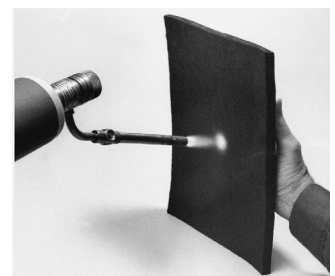
The Insurance Pad™

The Insurance Pad is the ultimate heat shield. Use wet or dry where ever higher temperature protection is required, up to 2500°F. The Insurance Pad is a fibrous felt heat shield with the safest specs in the industry. Repeated use of the product actually increases its heat resistance.

| Part # | Description |
|-----------------|-------------|
| 61-71036 | 6" x 9" |
| 61-71038 | 9" x 12" |

Applications
• Ideal for use with propane, MAPP gas, acetylene/ air and higher temperature torches.

Heat Resistant to 2500°F



Shop Rags & Silicone

Service & Shop Wipers

Reclaimed rags are sold by net weight for maximum value. Buttons and zippers have been removed. Service & shop wipers use a highly specialized packaging system, which compresses wiping rags into small, compact, clear plastic packages. These packages hold numerous benefits over corrugated boxes.

Heavy Duty Service & Shop Rags

Coloured rags equivalent to soft, thick, fleece like sweatshirt material.

| Part # | Description | Weight |
|------------------|----------------------------|------------------|
| 13-546-5 | 5 lbs. service size pack. | 5 (lbs.) |
| 13-546-10 | 10 lbs. service size pack. | 4.5 kg (10 lbs) |
| 13-546-25 | 25 lbs. shop size pack. | 11.3 kg (25 lbs) |

Medium Duty Service & Shop Rags

Coloured rags, similar to balbriggan or Polo cotton T-shirt material.

| Part # | Description | Weight |
|------------------|----------------------------|------------------|
| 13-536-10 | 10 lbs. service size pack. | 4.5 kg (10 lbs) |
| 13-536-25 | 25 lbs. shop size pack. | 11.3 kg (25 lbs) |

Light/ Medium Duty Service & Shop Rags

Lightly coloured, near white cotton blend rags, similar to dress shirts or linen sheet material.

| Part # | Description | Weight |
|------------------|----------------------------|------------------|
| 13-538-10 | 10 lbs. service size pack. | 4.5 kg (10 lbs) |
| 13-538-25 | 25 lbs. shop size pack. | 11.3 kg (25 lbs) |

Silicone

Features :

- NSF Approved • 100% Silicone • 100% RTV



302 (GP) General Purpose
Available in multiple colours
The ideal multiple purpose
silicone sealant for all weather
applications



302 (HT) High Temperature
Withstands temperatures of
260°C(500°F) constant and
316°C(600°F) intermittent
An ideal silicone for extreme
temperature applications

Caulking Guns

113 Series

Economy grade
310ml/10.15oz
Clean out tool on barrel



15-CG000113

138 Series

Professional grade
310ml/10.15oz
Clean out tool on handle



15-CG000138

Package Features

- Compact: 50% space savings.
- Save money on storage.
- Save money on transport.
- Waterproof.
- Stackable.
- Hassle-free dispensing design.

Service Package
13-536-10
10 lbs. Package



Shop Package
13-536-25
25 lbs. Package



| Part # | Colour | Size (ml/oz) | Cs. Qty |
|-----------------|-----------|----------------------|---------|
| 83-30281 | White | 83/2.8(squeeze tube) | 24 |
| 83-30280 | Clear | 83/2.8(squeeze tube) | 24 |
| 83-30283 | Black | 83/2.8(squeeze tube) | 24 |
| 83-30201 | White | 300/10.15 | 12 |
| 83-30200 | Clear | 300/10.15 | 12 |
| 83-30202 | Aluminium | 300/10.15 | 12 |
| 83-30203 | Black | 300/10.15 | 12 |
| 83-30205 | Almond | 300/10.15 | 12 |

| Part # | Colour | Size (ml/oz) | Cs. Qty |
|-----------------|----------|-----------------------|---------|
| 83-30289 | Red- HT | 83/2.8 (Squeeze Tube) | 24 |
| 83-30293 | Black-HT | 83/2.8 (Squeeze Tube) | 24 |
| 83-30209 | Red-HT | 300/10.15 | 12 |
| 83-30213 | Black-HT | 300/10.15 | 12 |

Spray Nine - Premium Multi-Purpose Cleaner/ Degreaser/ Disinfectant

Spray Nine - The First & Still The Best!

Spray Nine cleans hard surfaces such as stainless steel, plastic, tile, rubber, vinyl, fiberglass, porcelain and formica with "spray on, wipe off" ease.

Digs Out Tough Soils Fast!

Enriched with a powerful germicidal, Spray Nine can be used to disinfect and deodorize hospitals, nursing homes, schools, and other institutions where housekeeping is of prime importance. Also controls mold and mildew while destroying bacterial odors.

30 second disinfecting time*!

When used as directed, Spray Nine will disinfect hard non-porous surfaces such as walls, floors, tables, chairs and countertops. Spray Nine kills many bacteria and destroys powerful odors. Used as a hospital grade disinfectant, Spray Nine has been registered by Health and Welfare Canada to kill HIV-1 virus (associated with AIDS), Salmonella, Staphylococci, and Pseudomonas on inanimate surfaces in just 30 seconds. Used regularly, Spray Nine greatly reduces the risk of cross infection.

* Most disinfectant products require a 10 minute contact time to kill germs.



Spray Nine

| Part # | Description | Package |
|------------------|---------------------|---------|
| 15-C26822 | 650 ml pump bottle | 12/ctn |
| 15-26832 | 946 ml spray bottle | 12/ctn |
| 15-26804 | 4 L jug | 4/ctn |

Degreasers / Multi Purpose

Spray Nine - Industrial Multi-Purpose Cleaner/ Degreaser Spray Nine Industrial - The In-process Cleaning & Degreasing Solution!

No other product removes really tough industrial soils as quickly and effectively from manufacturing equipment, engines and machinery to countertops, floors and even washrooms as Spray Nine Industrial. The ready to use formula saves time, labour and money by effectively serving as a all in one cleaner.

Spray Nine - Industrial

| Part # | Description | Package |
|-----------------|---------------------|---------|
| 15-13532 | 946 ml spray bottle | 12/ctn |



15-13532
Illustrated

Penetrating Oil & Lubricants

Break • Away

Fast Penetrating Oil

Break•Away is a pure oil-based product that penetrates faster and lubricates longer. It leaves a thicker, longer lasting film vs. light duty solvent-based water displacement formulas. Break•Away is famous for completing the cycle of lubrication and reducing the coefficient of friction on hot or cold moving parts. Whether it be freeing frozen parts, lubricating moving components or protecting tools and equipment from rust or corrosion, Break•Away's fast penetrating oil is your anywhere, anytime solution. Contains no ozone depleting CFC's. (pin point applicator straw included).

| Part # | Description | Package |
|---------------|------------------------|---------|
| 15-C10 | 369g aerosol can style | 12/ctn |

15-C10
Illustrated



Silicone Spray

Synthetic Polymer Lube - The Heavy Duty, Industrial Grade Lubricant!

Silicone Spray's industrial grade formula is an extra heavy-duty concentrate of high quality silicone for maximum performance. Silicone Spray lubricates mechanical parts, conditions rubber, waterproofs and protects against rust or corrosion. Silicone is a stain-free synthetic polymer lubricant that virtually dries to the touch. It reduces friction and lubricates without petroleum oil or grease. Contains no ozone depleting CFC's. (pin point applicator straw included).

| Part # | Description | Package |
|---------------|--------------------------|---------|
| 15-C33 | 450 ml aerosol can style | 12/ctn |

15-C33
Illustrated



White Grease

Heavy Duty Lithium Plus Teflon®

White Grease is a uniquely blended grease that sprays on as a liquid, penetrates and then sets up as a lubricating grease to reduce wear, stop squeaks and repel moisture. Once set-up White Grease remains soft and pliable without drying out. Excellent for applications with close tolerances where metal to metal or metal to plastic lubrication and lasting protection are desired. White Grease works well in both high or low temperatures and in all types of weather. Contains no ozone depleting CFC's. (pin point applicator straw included).

| Part # | Description | Package |
|---------------|----------------------------|---------|
| 15-C34 | 443.5 ml aerosol can style | 12/ctn |

15-C34
Illustrated



Lubricants & Protectants

EZ Telescopic Oiler

The Finest All-Purpose Industrial Oil

The telescoping Spout That Reaches Everywhere! Telescopic Oiler's are specially formulated to reduce wear on moving parts. The oil contains superior additives with anti-rust properties preventing corrosion. The convenient retractable spout makes it easy to get to those hard to reach places.

| Part # | Description | Package |
|----------------|--------------------------|---------|
| 10-ZS75 | 118 ml telescopic bottle | 12/ctn |

10-ZS75
Illustrated



EZ Rust Breaker

The Finest All-Purpose Industrial Oil

Alltemp's Rust Breaker is specially formulated to quickly loosen rust and frozen parts. Rust Breaker's demineralizing agents act as a penetrating oil and superior rust inhibitor. The telescoping spout reaches everywhere! The convenient retractable spout makes it easy to get to those hard to reach places.

| Part # | Description | Package |
|----------------|--------------------------|---------|
| 10-RB75 | 118 ml telescopic bottle | 12/ctn |

10-RB75
Illustrated



Features

- Hi-impact plastic guards.
- Horizontal and vertical mounting.
- Heavy duty lock and key.
- Comes with complete mounting hardware.
- Each model includes a ring & solid base.
- Colour - clear cover with off white base.

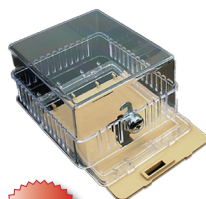


77-PG3
Illustrated



585-TG6
Illustrated

NEW!!



NEW!!

585-TG2
Illustrated



77-PG12
Illustrated

Reduce Inventory!
Our thermostat guards come complete with hardware, ring and solid bases.



Mounting Base Types
All mounting bases are plastic.

Plastic Thermostat Guards

| Part # | Base | Inside Dimensions | | | Cross Reference | |
|----------------|-------|-------------------|-------|-------|-----------------|----------------------|
| | | L | W | D | | |
| 77-PG3 | Ring | 3.75" | 3.50" | 2.62" | BTG-EK | F29-0252 |
| | Solid | 4.00" | 4.00" | 2.50" | ECST | 029-0178 029-0179 |
| 585-TG2 | Ring | 5.25" | 4.62" | 3.12" | BTG-K | F29-0251 |
| | Solid | 5.75" | 5.00" | 2.81" | KCBT | F29-0257 |
| 585-TG6 | Ring | 6.31" | 3.62" | 3.06" | BTG-RK | F29-0253 |
| | Solid | 6.62" | 4.12" | 2.75" | RCBT | 029-0143 |
| 77-PG12 | Ring | 8.18" | 4.62" | 3.56" | BTG-UK | F29-0254 |
| | Solid | 8.50" | 5.00" | 3.87" | UCBT | 029-0198 |

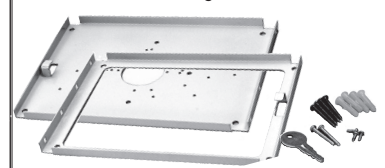
Metal Thermostat Guards

Features

- Durable metal guards.
- Horizontal and vertical mounting.
- Heavy duty lock and key.
- Comes with complete mounting hardware.
- Each model includes a ring & solid base.*
- Colour - off white cover with off white base.

Mounting Base Types
 77-MG3 Plastic
 77-MG6 Plastic
 77-MG9 Metal
 77-MG12R Metal
 77-MG12S Metal

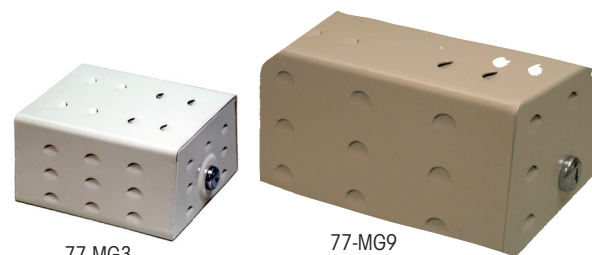
Reduce Inventory!
Our thermostat guards come complete with hardware, ring and solid bases.



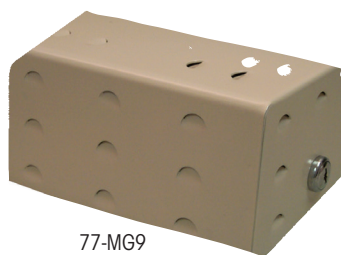
Metal Thermostat Guards

| Part # | Base | Inside Dimensions | | | Cross Reference | |
|------------------|-------|-------------------|-------|-------|-------------------|----------|
| | | L | W | D | | |
| 77-MG3 | Ring | 5.31" | 4.31" | 3.00" | BTG-KWM | KMRT |
| | Solid | 5.62" | 5.12" | 2.87" | BTG-KM | KMST |
| 77-MG6 | Ring | 6.31" | 3.62" | 3.18" | BTG-EM | EMST |
| | Solid | 6.62" | 4.12" | 3.75" | BTG-RM BTG-RWM | RMRT |
| 77-MG9 | Ring | 6.75" | 4.50" | 3.43" | BTG-UWM | UMRT |
| | Solid | 7.18" | 5.25" | 3.43" | BTG-UM | UMST |
| 77-MG12R* | Ring | 6.12" | 3.81" | 3.12" | BTG-54VLW | F29-0256 |
| 77-MG12S* | Solid | 6.37" | 4.25" | 3.00" | BTG-54VL | F29-0255 |

* Hinged metal guards do not come with both bases.



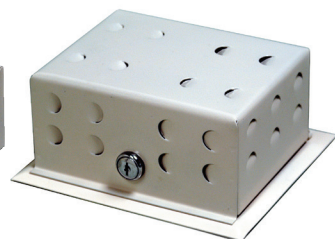
77-MG3
Illustrated



77-MG9
Illustrated



77-MG6
Illustrated



77-MG12R - Hinged
Illustrated

Clipstrip™

Clipstrip™ is a powerful pocket light available in 140 lumens that includes a magnetic clip. It is available in yellow or camo and AAA batteries are included.

| Part # | Discription | Order Mult. |
|---------------|-----------------------------|-------------|
| 111112 | Clipstrip Pocket Light | 12 |
| 111116 | Clipstrip Pocket Camo Light | 12 |

NEW!!



111112 111116

Clipstrip2™

Clipstrip2™ is a powerful pocket light available in 140 lumens that includes a magnetic clip. It is available in yellow or camo and AAA batteries are included.

| Part # | Discription | Order Mult. |
|---------------|--------------------------|-------------|
| 111118 | Clipstrip 2 Pocket Light | 9 |

NEW!!



111118

Clipstrip™ Aqua

Clipstrip™ Aqua is a waterproof light with 180 lumens and includes a magnetic clip and floats. It is available in yellow and comes with a rechargeable 2200 mAh lithium-ion battery. Sold individually.

| Part # | Discription | Order Mult. |
|---------------|----------------------|-------------|
| 111113 | Clipstrip Aqua Light | 1 |

NEW!!



111113

PIVOT™

The PIVOT™ is a light that has a 360° swivel hook with 240 lumens and magnetic base and back. Three AA batteries included.

| Part # | Discription | Order Mult. |
|---------------|--------------------------|-------------|
| 111114 | Pivot Pivoting Worklight | 9 |

NEW!!



111114

PIVOT™33

The Pivot™ 33 is a light that has a 360° swivel hook with 160 lumens and magnetic back and pivoting base. Lights on front and top with three AA batteries included. Available in yellow or camo.

| Part # | Discription | Order Mult. |
|---------------|--------------------------|-------------|
| 24-458 | Pivot 33 Worklight | 9 |
| 24-460 | Pivot 33 Worklight, Camo | 9 |

NEW!!



24-458 24-460

Clip-On Zoom Light

The Clip-On Zoom Light provided 150 lumens, 90° pivoting capability coupled with the ability to zoom from broad to narrow. It includes a magnetic base and includes three AAA batteries.

| Part # | Discription | Order Mult. |
|---------------|------------------------|-------------|
| 111128 | Clip-On Zoom Worklight | 8 |

NEW!!



111128

HEMImini™

The HEMImini™ has up to 1000 lumens of power (4 hours - full power) with a 4400 mAh lithium-ion rechargeable battery. It includes a 180 degree swivel hook with an optional magnetic cover (410239).

| Part # | Discription | Order Mult. |
|---------------|---------------------------------------|-------------|
| 114301 | HEMImini Worklight | 1 |
| 410239 | Magnetic Cover for HEMImini Worklight | 1 |

NEW!!



111128 410239

PIVOT™mini

The PIVOT™ mini is a light that has a 360° swivel hook with 120 lumens and magnetic back and base. Lights on front and top with three AAA batteries included. Available in yellow or camo.

| Part # | Discription | Order Mult. |
|---------------|-------------------------------------|-------------|
| 111115 | PIVOT mini Pivoting Worklight | 12 |
| 111117 | PIVOT mini Pivoting Worklight, Camo | 12 |

NEW!!



111115

PIVOT™ Tough-Light

The PIVOT™ Tough Light has 150 lumens with a hanging hook and magnetic base. It also has 180 degree pivoting capability with three AAA batteries included.

| Part # | Discription | Order Mult. |
|---------------|-----------------------------|-------------|
| 111123 | PIVOT Tough-Light Worklight | 8 |



Cliplight Extends

The Cliplight Extends has 120 lumens at the top and 140 lumens in the front with a pivoting head. The light comes with a telescopic system and magnetic base. Four AAA batteries included.

| Part # | Discription | Order Mult. |
|---------------|-----------------------------|-------------|
| 111130 | Cliplight Extends Worklight | 8 |



HEMIPLUS™ 2

The HEMIPLUS™ 2 has up to 1200 lumens of power (4 hours - full power) with a 4400 mAh lithium-ion rechargeable battery. It includes a metal hook and removable magnetic cover.

| Part # | Discription | Order Mult. |
|---------------|----------------------|-------------|
| 114302 | HEMIPLUS 2 Worklight | 1 |



Spotlight

The Spotlight is a cordless work light solution with up to 1200 lumens of power (3 hours - full power) with a 4000 mAh lithium-ion rechargeable battery. It includes two adjustable joints on magnetic stand for different angles. It has three power modes including a dimmer.

| Part # | Discription | Order Mult. |
|---------------|------------------------------|-------------|
| 111121 | Spotlight Cordless Worklight | 1 |



Duct Straps

Duct Strap - Woven Polypropylene

Webbed duct strap possessing high tensile and abrasion resistance. This can be used for flex duct as it is easy to cut and staple to joists. The product is chemical resistant and tested to meet UL Standard 2043.



710-100



| Part # | Discription | Order Mult. |
|----------------|-----------------------------|-------------|
| 710-100 | 1-3/4" x 100 Yards - Black | 24 |
| 710-101 | 1-3/4" x 100 Yards - Silver | 24 |
| 710-102 | 3" x 100 Yards - Black | 8 |
| 710-103 | 3" x 100 Yards - Silver | 8 |

Duct Strap - Metallic - Roll

Galvanized duct strap in a convenient cardboard dispenser is not only easy to drill or nail, but also solid strapping. Plenum rated.



710-001

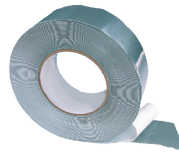


| Part # | Discription | Order Mult. |
|----------------|--------------------------|-------------|
| 710-001 | 26 Gauge - 1" x 100' | 1 |
| 710-002 | 30 Gauge - 1" x 100 | 1 |
| 710-003 | 30 Gauge - 1-1/2" x 100' | 1 |
| 710-004 | 26 Gauge - 1-1/2" x 100' | 1 |
| 710-005 | 22 Gauge - 1" x 100' | 1 |

Tapes

Stick-E-Tape

Self adhesive aluminum tape with temperature range of 40 degree F to 200 degree F. Easily painted. Excellent vapor barrier; effective UV and water shield over urethane foam. Preferred duct and pipe wrap.



50302



| Part # | Discription | Order Mult. |
|--------------|---------------------------|-------------|
| 50302 | AFT-701-2 - 2" x 50' Roll | 24 |

Foil Scrim Kraft Tape

Non tearable, diamond patterned backing with an aggressive rubber based adhesive system for consistently dependable performance. Made in the USA.



640-FSK2



| Part # | Discription | Order Mult. |
|-----------------|---------------------------------------|-------------|
| 640-FSK2 | Foil Scrim Kraft Tape - 2" - 50 Yards | 24 |
| 640-FSK3 | Foil Scrim Kraft Tape - 3" - 50 Yards | 16 |

Cloth Duct Tapes

High tack, excellent strength. Superior performance in sealing air handling systems. Heavy cloth content for easier tearing and additional strength. Made in the USA.



PC-622-S



| Part # | Discription | Order Mult. |
|-----------------|---|-------------|
| PC-622-S | 2" x 60 Yards - Premium Grade - Silver | 24 |
| PC-622-B | 2" x 60 Yards - Premium Grade - Black | 24 |
| PC-609-S | 2" x 60 Yards - Industrial Grade - Silver | 24 |
| PC-609-B | 2" x 60 Yards - Industrial Grade - Black | 24 |
| PC-600-S | 2" x 60 Yards - Contractor Grade - Silver | 24 |
| PC-600-B | 2" x 60 Yards - Contractor Grade - Silver | 24 |
| PC-857 | 2" x 60 Yards - Metallized UL181B-FX Flex Duct Tape | 24 |

Aluminum Foil Tape

Prevents heating and cooling losses. Blocks odors and moisture. Easy to handle. Use for HVAC and refrigeration systems. 35 degree F to plus 260 degree F working temperatures. 3-5 year shelf life. Made in USA.



640-AF2



| Part # | Discription | Order Mult. |
|-----------------|-------------------------------------|-------------|
| 640-AF2 | 2" Aluminum Foil Tape - 50 yds. | 24 |
| 640-AF25 | 2-1/2" Aluminum Foil Tape - 50 yds. | 20 |
| 640-AF3 | 3" Aluminum Foil Tape - 50 yds. | 16 |

Flex Duct Tape

Specially designed to meet new UL181B FX code for flex duct. Higher adhesion and tack than traditional cloth duct tapes. Conformable, hand tearable foil; 3 mil thickness. 2 in. x 120 yds. Code identification printed on the tape. Acrylic adhesive for superior performance in extreme environments. (35°F to 260°F)



640-FD2S



| Part # | Discription | Order Mult. |
|-----------------|------------------------------|-------------|
| 640-FD2S | Flex Duct Tape - Silver - 2" | 24 |
| 640-FD2B | Flex Duct Tape - Black - 2" | 24 |
| 640-FD3S | Flex Duct Tape - Silver - 3" | 16 |

UL Listed Foil Tape

Unique acrylic adhesive for airtight bonds on joints and seams of fiberglass duct systems. Flexible, easy to use. Meets or exceeds performance standard AFLS 100 73 and UL 181 A P.



| Part # | Discription | Order Mult. |
|-----------------|---|-------------|
| 640-UL25 | UL 181 Listed Foil Tape - 2-1/2" - 60 Yards | 16 |
| 640-UL3 | UL 181 Listed Foil Tape - 3" - 60 Yards | 16 |

DiversiTech Gas Connectors 1/2" OD

Combining flexibility, durability, and functionality, DiversiTech stainless steel gas connectors are CSA design certified and 100% leak tested for quality and security. DiversiTech gas connectors are durable and reliable to give you everything you need. Available in a variety of sizes and lengths.



D20-3132-18



| Part # | Discription | Order Mult. |
|--------------------|------------------------------------|-------------|
| D20-3132-18 | 18" long, 1/2" OD x 3/8" ID, M x F | 12 |
| D20-3132-24 | 24" long, 1/2" OD x 3/8" ID, M x F | 12 |
| D20-3132-36 | 36" long, 1/2" OD x 3/8" ID, M x F | 12 |
| D20-3132-48 | 48" long, 1/2" OD x 3/8" ID, M x F | 12 |

Epoxy Coated Gas Connectors

Yellow coated gas connectors include an epoxy coating for added durability and extra protection from corrosion, chemical stains from common household products and plumbing repairs.



DC30-3132-18



| Part # | Discription | Order Mult. |
|---------------------|------------------------------------|-------------|
| DC30-3132-18 | 18" long, 5/8" OD x 1/2" ID, M x F | 12 |
| DC30-3132-24 | 24" long, 5/8" OD x 1/2" ID, M x F | 12 |
| DC30-3132-36 | 36" long, 5/8" OD x 1/2" ID, M x F | 12 |
| DC30-3132-48 | 48" long, 5/8" OD x 1/2" ID, M x F | 12 |

DiversiTech Gas Connectors 5/8" OD

Combining flexibility, durability, and functionality, DiversiTech stainless steel gas connectors are CSA design certified and 100% leak tested for quality and security. DiversiTech gas connectors are durable and reliable to give you everything you need. Available in a variety of sizes and lengths.



D30-3131-18



| Part # | Discription | Order Mult. |
|--------------------|------------------------------------|-------------|
| D30-3131-24 | 24" long, 5/8" OD x 1/2" ID, M x M | 12 |
| D30-3131-36 | 36" long, 5/8" OD x 1/2" ID, M x M | 12 |
| D30-3131-48 | 48" long, 5/8" OD x 1/2" ID, M x M | 12 |
| D30-3132-18 | 18" long, 5/8" OD x 1/2" ID, M x F | 12 |
| D30-3132-24 | 24" long, 5/8" OD x 1/2" ID, M x F | 12 |
| D30-3132-36 | 36" long, 5/8" OD x 1/2" ID, M x F | 12 |
| D30-3132-48 | 48" long, 5/8" OD x 1/2" ID, M x F | 12 |

Flue Caps

Flue Caps

PVC Flue Caps are an affordable way to protect today's high efficiency furnaces from dirt, moisture and other debris.

- Protection for high efficiency furnaces
- Universal flue cap fits 1.5", 2" and 3" PVC pipe
- Reduces draft inducer motor rust
- Helps to eliminate pressure switch service calls
- Resistant to UV radiation and oxidative degradation
- CSA approved for use in 90% AFUE heating applications

| Part # | Discription | Order Mult. |
|-------------|-----------------|-------------|
| EC-1 | E capp Flue Cap | 12 |



EC-1



www.alltemp.ca