



## OB160A (44211)

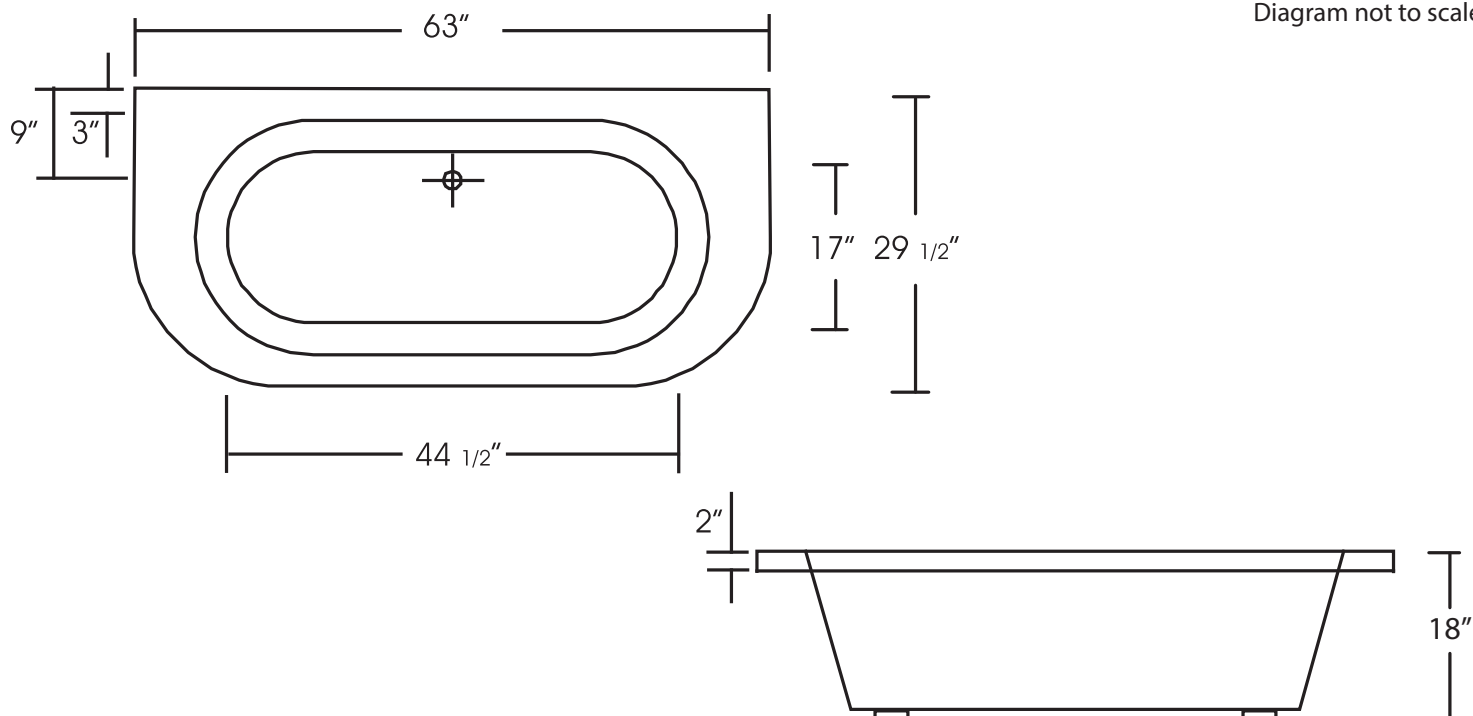
63" x 29 1/2" x 17 3/8"  
(1600 x 750 x 440mm)

Acri-tec Drop In tubs are designed to drop into a deck or custom surround.

Made from 100% acrylic with fibre-glass reinforcement for added strength and durability.

The LC160A can hold up to 40 gallons of water.

## Dimensions



This bathtub complies with CSA Standards

In keeping with our policy of continuing product improvement, Acri-Tec Industries Corp., reserves the right to change product specifications without notice.