

## Single Handle Pull-Down Kitchen Faucet

### SPECIFICATIONS



#### Features/Benefits

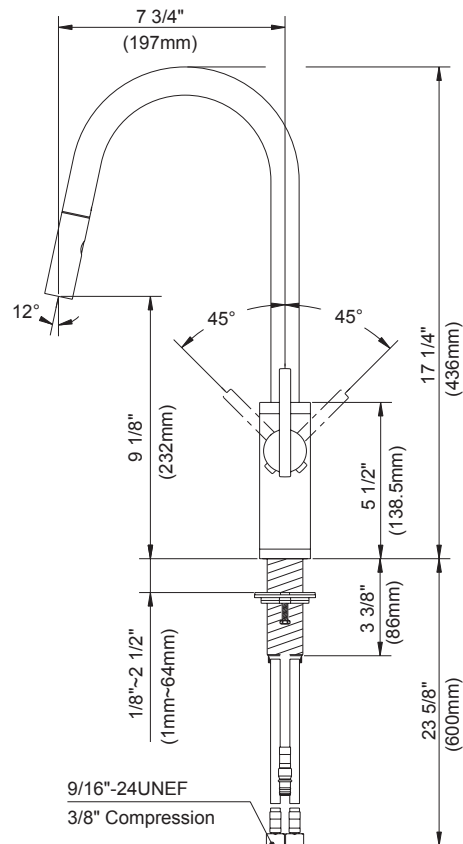
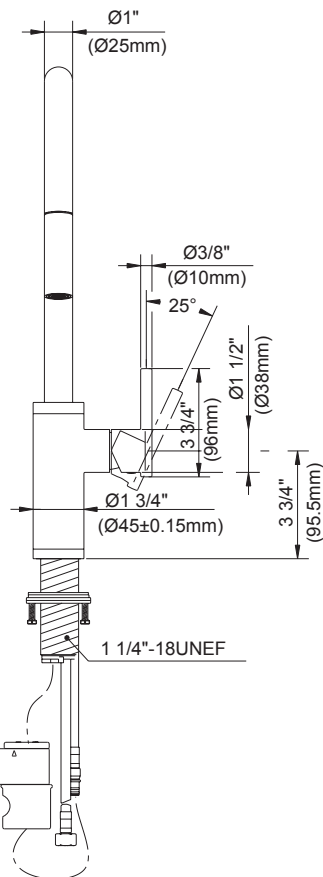
- SnapBack® Retraction System
- Easily Adjustable GripLock® Weight
- 1.75 gpm (6.6 L/min) Maximum Flow Rate @ 60 psi
- 2 Function Spray/Aerated Stream
- Ceramic Disc Cartridge
- 17 1/4" High Swivel Spout, 7 3/4" Spout Reach
- Single Hole Installation

#### Available Color/Finishes

Chrome

Please see [gerber.com](http://gerber.com) or current price list for available finishes.  
Finish is defined by additional suffix.

#### Standards & Certifications



#### Submittal Information:

Name: \_\_\_\_\_

Location: \_\_\_\_\_

Contractor: \_\_\_\_\_

Contact #: \_\_\_\_\_

**WARRANTY:** Gerber products are covered by a manufacturer's limited warranty for manufacturing defects.

2500 Internationale Parkway, Woodridge, IL 60517, USA [www.gerberonline.com](http://www.gerberonline.com) or CA [www.gerberonline.ca](http://www.gerberonline.ca)