

THOUGHTFUL DESIGN AND INNOVATION



SERIES 2800

SERIES 2300

 **FIBRESTOR™**

THE FIBREGLASS LINE THAT HAS ALL
THE GENIUS AND INNOVATION BUILT-IN
THAT HAS MADE GRANBY INDUSTRIES
THE LEADER IN OIL STORAGE SOLUTIONS





See warranty certificate on website for details.



GENERAL CHARACTERISTICS

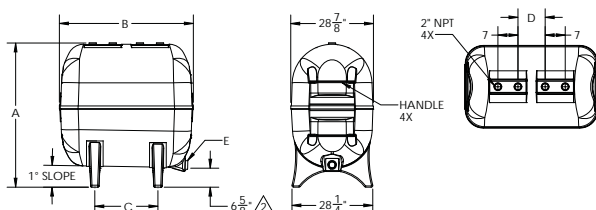
Fibrestor Series 2800

- Approved for outdoor and indoor installations
- Complies 100% with the new Canadian B139-15 regulations
- Designed with unique features to better suit outdoor installations
 - Innovative tank leg design for greater stance to allow for outmost tank stability and easy installation and levelling of the tank
 - Built-in slope at the bottom of the tank to allow easier removal of water build-up from condensation
 - Top draw oil supply ready
 - All tank models come standard with four 2" openings on top of tank
- Two large grip handles on each side for greater ease of manipulation and the handles are recessed so they are never in the way
- Features dual-layer resin composite with anti-mildew, UV-resistant exterior gel coat
- All tank sizes are available with either a 1/2" or 2" side tap or without side opening for top draw applications

SPECIFICATIONS

| Product No. | Capacity L / GAL. | Nom. thk (in.) | Weight (lb.) | A (in.) | B (in.) | C (in.) | D (in.) |
|-------------|----------------------|-------------------|-----------------|------------|------------|------------|------------|
| 401000_ | 680 / 150 | 1/4 | 155 | 50 5/16 | 46 3/4 | 22 | 9 1/2 |
| 402000_ | 910 / 200 | 1/4 | 175 | 52 1/2 | 56 1/4 | 31 1/2 | 17 3/8 |
| 402500_ | 1135 / 250 | 1/4 | 195 | 52 1/2 | 68 3/4 | 44 | 30 1/2 |

_ Designates the side tap opening option 0=no side tap (for top draw use),
1=1/2" side tap, 2=2" side tap.



FOR MORE INFORMATION,
PLEASE CONTACT OUR
MAIN OFFICE AT:

1020 André-Liné Street
Granby, Quebec J2J 1J9 Canada
1 800 839-2070
sales@granbyindustries.com
www.granbyindustries.com



GENERAL CHARACTERISTICS

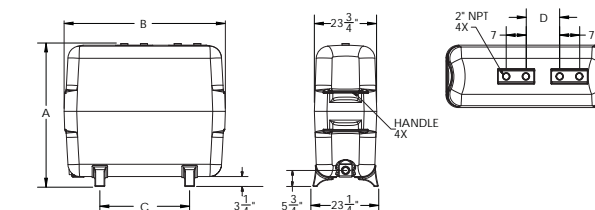
Fibrestor Series 2300

- Approved for indoor and outdoor installation
- Complies 100% with the new Canadian B139-15 regulations
- Designed with unique features to better suit indoor installations
 - Only 23 3/4" wide, will fit through most doorways
 - Compact footprint, will not use more floor space than a standard steel tank of the same volume
 - Top draw oil supply ready
 - Comes standard with four 2" openings of the same dimensions on top of tank and configuration as most common oil steel tanks, which allows for simple and easy retrofit installation
 - No special fittings needed—tapings will accept standard fill, gauge and vent fittings
- Two large grip handles on each side for greater ease of manipulation and the handles are recessed so they are never in the way
- Features dual-layer resin composite with anti-mildew, UV-resistant exterior gel coat
- Available with either a 1/2" or 2" side tap or without side opening for top draw applications

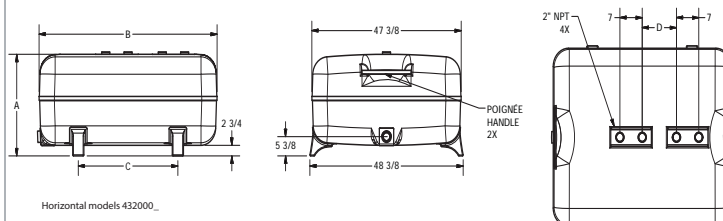
SPECIFICATIONS

| Product No. | Capacity L / GAL. | Nom. thk (in.) | Weight (lb.) | A (in.) | B (in.) | C (in.) | D (in.) |
|-------------|----------------------|-------------------|-----------------|------------|------------|------------|------------|
| 422000_ | 891 / 196 | 1/4 | 193 | 51 | 59 | 32 | 12 |
| 421500_ | 750 / 165 | 1/4 | 163 | 44 | 59 | 32 | 12 |
| 432000_ | 871 / 192 | 1/4 | 190 | 27 | 56 1/2 | 31 1/4 | 10 3/4 |

_ Designates the side tap opening option 0=no side tap (for top draw use),
1=1/2" side tap, 2=2" side tap.



Models 422000_ 421500_



Horizontal models 432000_

DEALER