

RESIDENTIAL CATALOG



1.16

Thank goodness for Goodman®

Split Systems

7

Air Conditioners

DSXC18	Up to 18 SEER	8
DSXC16	Up to 16 SEER	9
GSX16	Up to 16 SEER	10
GSX14	14 SEER	11
GSX13	13 SEER	12

Heat Pumps

DSZC18	Up to 18 SEER / 9.5 HSPF	13
DSZC16	Up to 16 SEER / 9.5 HSPF	14
GSZ16	Up to 16 SEER / 9.5 HSPF	15
GSZ14	Up to 15 SEER / 9.0 HSPF	16

Gas Furnaces

17

GMVM97	Up to 98% AFUE	18
GCVM97	Up to 97% AFUE	19
GMVC96	Up to 96% AFUE	20
GCVC96	Up to 96% AFUE	20
GMEC96	Up to 96% AFUE	21
GMSS96	Up to 96% AFUE	22
GCSS96	Up to 96% AFUE	22
GMSS92	Up to 92% AFUE	23
GCSS92	Up to 92% AFUE	23
GMVC8	80% AFUE	24
GME8	80% AFUE	25
GMH8	80% AFUE	26
GDH8	80% AFUE	26
GMS8	80% AFUE	27
GDS8	80% AFUE	27
GHS8	80% AFUE	27

Packaged Units

29

Air Conditioners

GPC15H	Up to 15 SEER	30
GPC14M	14 SEER	31
GPC14H	14 SEER	32

Heat Pumps

GPH16M	Up to 16 SEER / 8.2 HSPF	33
GPH16H	Up to 16 SEER / 8.0 HSPF	34
GPH14M	14 SEER / 8.0 HSPF	35
GPH14H	Up to 14.5 SEER / Up to 8.0 HSPF	36

Gas/Electric Units

GPG14M	14 SEER / 81% AFUE	37
--------	--------------------	----

Dual-Fuel Units

GPD14	Up to 14.5 SEER/ 8.0 HSPF/ 80% AFUE	38
-------	-------------------------------------	----

Air Handlers and Coils

39

Air Handlers

AVPTC	40	MBVC/ MBR	43
ASPT	41	AWUF	44
ARUF	42	ACNF	45

Coils

CAPT	46	CHPF	49
CAPF	47	CSCF	50
CAUF	48		

Controls and Thermostats

51

ComfortNet™ Communicating Controls	52
TouchScreen Thermostats	53



Daikin Ductless Systems

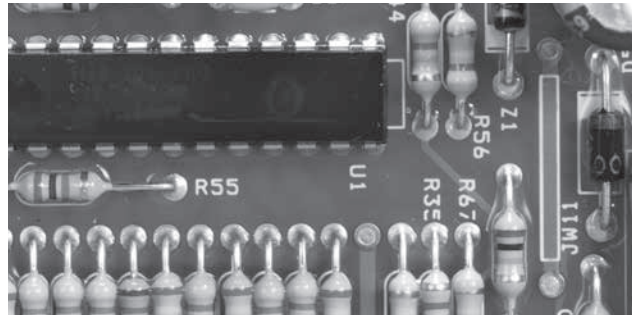
55

15 Series	Up to 15 SEER / 8.2 HSPF	56
19 Series	Up to 19 SEER / 9 HSPF	58
LV Series	Up to 24.5 SEER / Up to 12.5 HSPF	60
Quaternity	Up to 26.1 SEER / 11 HSPF	64
MXS Series	Up to 19.5 SEER / Up to 11.3 HSPF	66
SkyAir Series		70
Accessories		74



The Right Choice

Goodman® brand — The right choice for millions and millions of people



For over three decades, the Goodman® brand has concentrated on something more important than simple brand-recognition consumer advertising. And that's the design, engineering, and manufacture of dependable products that have helped millions and millions of homeowners achieve reliable, high-quality, and affordable indoor comfort. In addition, the Goodman brand has earned the loyalty and respect of thousands of local independent heating and cooling professionals across North America.

We believe that you, a local HVAC (Heating, Ventilation and Air Conditioning) professional, knows best about the specific indoor comfort needs and indoor air quality solutions of your customers. When you recommend a Goodman brand product, rest assured that customer will soon be receiving great indoor comfort, at a refreshingly affordable price.

Making the grade

And as further proof that the Goodman brand is making the grade with satisfied homeowners, it was awarded the A+ rating by the Better Business Bureau, is the highest rating possible.



Time-tested performance

The efficient movement of heat is a basic premise of the HVAC industry. Whether it's the removal of heat in conjunction with cooling products or the creation of heat for warmth, the HVAC world revolves around the thermodynamics of heat transfer. As you may know, the Goodman brand is recognized as a heat transfer expert. Investing in research and development is integral to the Goodman brand's success.

Goodman products offer a wide array of unique product features and enhancements that reinforce the durability and reliability of the entire Goodman brand product line, such as:

- A unique tubular gas furnace heat exchanger with a design that brings new meaning to durability;
- High-efficiency air conditioners and heat pumps with the Goodman brand's patented SmartCoil™ condensing coil – our most advanced 5mm copper tube and aluminum fin combination available;
- ComfortNet™ Communicating Control systems that help high-efficiency systems run their best and offer homeowners new levels of control and operational precision;
- Unique all-aluminum evaporator coils;
- Heat pumps that include more standard features than previous models



Committed to quality

There's good reason that thousands of the nation's HVAC professionals recommend the Goodman brand. Dealers are completely comfortable that Goodman brand products will keep their customers satisfied and enhance their reputation. Goodman brand manufacturing facilities are ISO 9001-certified, an independent standard accepted worldwide as the benchmark for quality manufacturing and management processes, and ISO 14001-certified, an international environmental certification.

Goodman is focused on a few basic goals: build more reliable, longer-lasting products than anyone else; make durable cooling and heating products and systems as affordable as possible and design everything for quick, trouble-free installations. Those values have led the Goodman brand this far and they will lead it into the future.



Efficiency Changes for 2015

New U.S. Department of Energy (DOE) minimum efficiency standards go into effect on January 1, 2015. We have been preparing for this for some time and the purpose of this flyer is to make sure you are prepared as well. While the change from 13 SEER to 14 SEER may not seem as significant as the change from 10 SEER to 13 SEER back in 2006, this change is different—it's more complicated. The complication is new regional standards that apply to Split System and Packaged Air Conditioners. The new efficiency standards contain both national standards (which are based on date of manufacture) and regional standards (which are based on date of installation):

New National Standards

- Split system heat pumps (14 SEER / 8.2 HSPF)
- Single packaged gas/electric (14 SEER / 81% AFUE)
- Single packaged heat pumps (14 SEER / 8.0 HSPF)
- Single packaged air conditioner (14 SEER)
- Gas-fired furnaces (80% AFUE)
- Kept 13 SEER base national standard for split system air conditioners

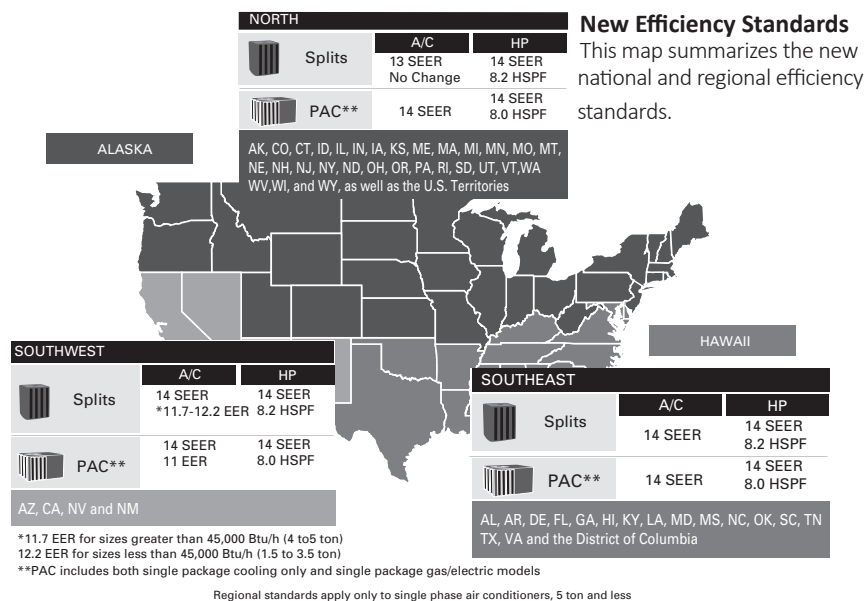
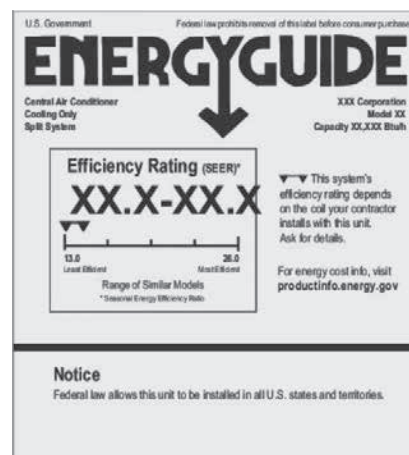
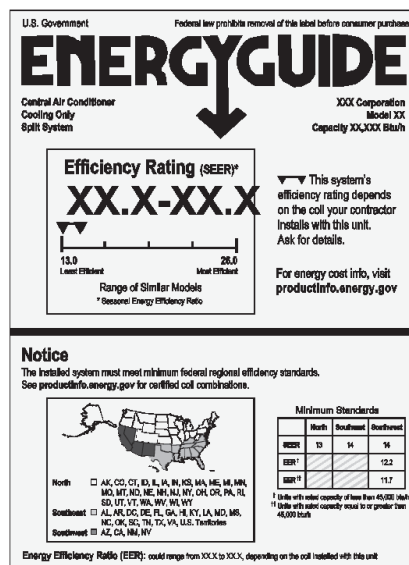
Labeling

There will be two methods to help identify products subject to regional standards. The first is the Energy Guide label that is noticeably different, with the inclusion of the map of the United States that identifies where the equipment can be installed.

The second is a new, separate statement that will be on the rating plate or on a label next to the rating plate called the "Install Prohibited" statement. All products manufactured on or after 1/1/2015 that are subject to the new regional efficiency standards will have both the new Energy Guide label and the Install Prohibited label, except for ductless products that will initially only have the new Energy Guide label. Ductless products will have the Install Prohibited label added at a later date.

You will also notice a range on the new Energy Guide label for Split Systems. Split System products subject to the new regional efficiency minimum standard of 14 SEER will have a range above 14 SEER and will not have an AHRI match below the 14 SEER minimum.

Energy Guide Labels Effective January 1, 2015
Subject to regional standards.
Can be installed anywhere.



IMPORTANT NOTE:

The information provided is a summarized overview and is not intended to provide a complete description of the new DOE 2015 Regional Standards. As additional information regarding the new DOE 2015 HVAC Regional Standards and the enforcement of these standards becomes available, we will make that information available at www.goodmanmfg.com/standards.

Sell-through grace period

Due to the late introduction of the enforcement mechanisms, the DOE is providing an 18-month sell-through period for products manufactured before 2015. This is summarized in the table below:

Product Type	Date of Manufacture	Installation Allowed in Region?		
		Northern	Southeast	Southwest
13 SEER Split AC	Before 1/1/2015	Yes	Until 6/30/2016	Until 6/30/2016
	On or after 1/1/2015	Yes	NO	NO
14 SEER Split AC with Standard EER ¹	Before 1/1/2015	Yes	Yes	Until 6/30/2016
	On or after 1/1/2015	Yes	Yes	NO
14 SEER Package AC with Standard EER ²	Before 1/1/2015	Yes	Yes	Until 6/30/2016 ³
	On or after 1/1/2015	Yes	Yes	NO

¹ This includes any split system air conditioner having a SEER rating greater than or equal to 14 SEER with an EER less than 12.2 (for capacity <45,000 Btu/h) or less than 11.7 (for capacity ≥45,000 Btu/h).

² This includes any single package air conditioner or single package gas/electric model having a SEER rating greater than or equal to 14 SEER with an EER less than 11.00.

³ 13 SEER single package equipment is included in this category.

What you need to know as a distributor

DOE defines a distributor as “a person (other than a manufacturer or retailer) to whom a consumer product is delivered or sold for purposes of distribution in commerce.” Therefore, if you resell products for sale other than to an end user, you may be considered a distributor as opposed to a contractor or dealer (see definitions below).

While the new DOE 2015 HVAC Regional Standards Enforcement rules have not been finalized, distributors will be required to comply with new requirements, which are expected to include:

1. Do not knowingly sell product that will be installed in violation of regional standards.
2. Conduct regional standards training for all employees and customers.
3. Effective 11/30/2015, maintain records for all units subject to the regional standards for a period of 54 months. These records are to include the outdoor unit manufacturer, model number, serial number, date of purchase, date of sale, customer name and delivery address if delivered.
4. Report any known violations to the DOE.

What you need to know as a contractor/dealer

As a contractor or dealer, you will also be required to adhere to requirements of the new DOE 2015 HVAC Regional Standards Enforcement Rules. We expect that DOE will define a contractor as “a person (other than the manufacturer or distributor) who sells to and/or installs for an end user a central air conditioner subject to regional standards.” We also expect that DOE will define a dealer as “a type of contractor, generally with a relationship with one or more specified manufacturers.” The contractor/dealer requirements are expected to include the following:

1. Do not knowingly install product that is in violation of regional standards.
2. Conduct regional standards training for all employees.
3. Maintain records for all units subject to the regional standards for a period of 48 months. These records are anticipated to include the indoor and outdoor unit manufacturer and model number, outdoor unit serial number, distributor purchased from, plus date and address of installation.
4. Report any known violations to the DOE.

Enforcement

Enforcement of the new standards will be at least partially via complaints registered with the DOE. DOE will have an email set up for reporting violations directly to them. In addition, suspected violations can be reported to us by email at compliance@goodmanmfg.com or by phone, toll free, at (844) 717-8521.

Complaints may come from upset homeowners, local inspectors, or contractors. It is also possible for manufacturers to discover installation violations through product registrations, warranty claims and service records. If we are made aware of a violation, we will report it to DOE and notify the appropriate distributor and contractor/dealer.

All verified violations will require remediation and can result in stiff fines. Notices of Violation will be posted publicly by the DOE. Further, if a distributor or contractor/dealer is found to routinely violate the new standards, manufacturers can be prohibited from selling products to that party.

Contractors, dealers and distributors should be aware that the DOE may request copies of documentation proving product sales and installations are in compliance. Records requested by DOE must be provided within 30 days.

Training

A recorded webinar providing details about the new efficiency standards is available for viewing at www.goodmanmfg.com/standards. Questions about the new efficiency standards can be emailed to RegionalStandardsQuestions@goodmanmfg.com.



The ComfortNet™ Communicating Control System continuously monitors itself and your system. If it senses a problem developing, the control's home screen display will indicate "Call for Service" and CHECK (i.e., Furnace Heat Pump, Air Conditioner, Air Handler) to identify an equipment fault. This alert prompts you to contact a qualified service technician.



The SmartShift® Heat Pump Defrost Control helps to increase compressor reliability and reduces the noise level during the heat pump system defrost cycle. When outdoor temperatures fall below freezing and the heat pump is forced to initiate a defrost cycle, SmartShift simply turns off the compressor for 30 seconds allowing the system pressure to equalize and then it restarts the compressor. This seamless operation is triggered automatically eliminating unwanted noise caused by heat pump defrost changeover cycles.

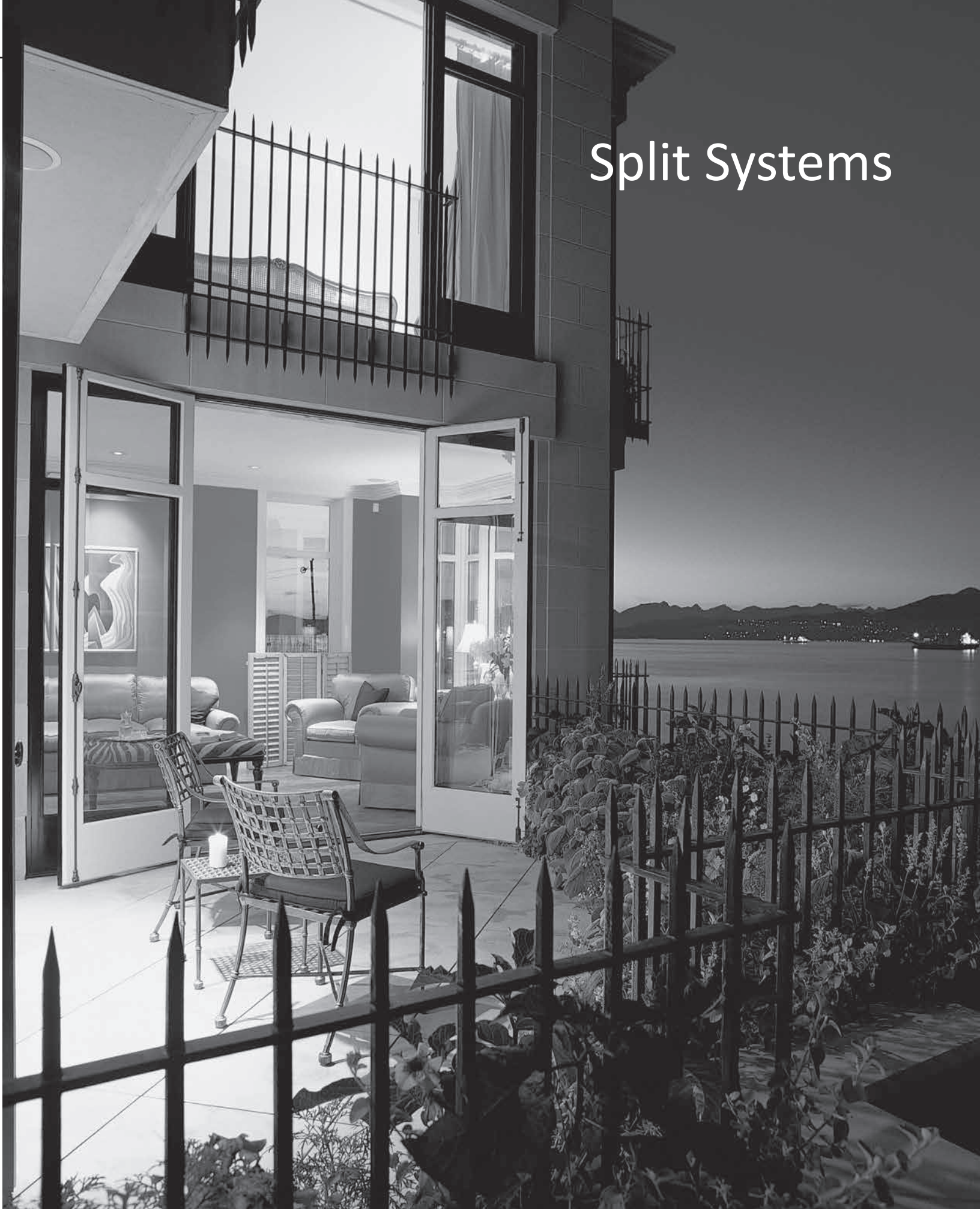


At the core of our newly designed Air Handlers is the SmartFrame™ inner skeleton. It adds lateral stability to the chassis, provides a mounting location for all internal components, and provides additional insulation retention. Our unique insulation retention solution eliminates all adhesives from the cabinet insulation, which is secured through mechanical means by the SmartFrame sub-structure and additional retaining rods strategically placed near the blower assembly.



The All Aluminum evaporator coil is constructed from aluminum tubing, fins and panels to give you a single metal solution for outstanding, time-tested heat transfer performance properties. If you're looking for an evaporator coil that offers enhanced performance (as tested in Goodman labs), this is the product for you.

Split Systems



DSXC18 — Up to 18 SEER

Model	Nominal Cooling (Tons)	Voltage-Phase-Hz	Dimensions			Service Valve		dBs	Ship Weight (lbs)
			W"	D"	H"	Liquid	Suction		
DSXC180361A*	3	208/230-1-60	35½	35½	38¼	⅜"	⅞"	71	228
DSXC180481A*	4	208/230-1-60	35½	35½	38¼	⅜"	⅞"	72	290
DSXC180601A*	5	208/230-1-60	35½	35½	38¼	⅜"	⅞"	74	296

Goodman Manufacturing Company, L.P. reserves the right to discontinue or change at any time specifications or designs without notice or without incurring obligations.



* Complete warranty details available from your dealer or at www.goodmanmfg.com. To receive the Lifetime Compressor Limited Warranty (good for as long as you own your home), 10-Year Unit Replacement Limited Warranty, and 10-Year Parts Limited Warranty, online registration must be completed within 60 days of installation. Online registration is not required in California or Quebec.



Product Features

- High-efficiency cooling performance
- ComfortNet™ Communicating Systems compatible
- Two-stage UltraTech™ Copeland® scroll compressor
- Expanded ComfortAlert™ diagnostics built in
- A louvered cabinet made of heavy-gauge galvanized steel that protects the coil
- High- and low-pressure switches
- Quiet operation ensured by:
 - A high-density foam compressor sound cover
 - An efficient condenser fan motor
 - A wire fan discharge grille
- Factory-installed, liquid-line filter drier
- Factory-installed ambient temperature sensor
- Appliance-quality, post-paint finish resists the effects of weather and time
- AHRI certified; ETL listed



Model	Nominal Cooling (Tons)	Voltage-Phase-Hz	Dimensions			Service Valve		dBs	Ship Weight (lbs)
			W"	D"	H"	Liquid	Suction		
DSXC160241A*	2	208/230-1-60	29	29	32 $\frac{1}{4}$	$\frac{3}{8}$ "	$\frac{3}{4}$ "	71	198
DSXC160361A*	3	208/230-1-60	29	29	38 $\frac{1}{4}$	$\frac{3}{8}$ "	$\frac{3}{4}$ "	71	202
DSXC160481B*	4	208/230-1-60	35 $\frac{1}{2}$	35 $\frac{1}{2}$	36 $\frac{1}{4}$	$\frac{3}{8}$ "	$\frac{7}{8}$ "	74	241
DSXC160601B*	5	208/230-1-60	35 $\frac{1}{2}$	35 $\frac{1}{2}$	38 $\frac{1}{4}$	$\frac{3}{8}$ "	$\frac{7}{8}$ "	75	301

Goodman Manufacturing Company, L.P. reserves the right to discontinue or change at any time specifications or designs without notice or without incurring obligations.



* Complete warranty details available from your dealer or at www.goodmanmfg.com. To receive the Lifetime Compressor Limited Warranty (good for as long as you own your home), 10-Year Unit Replacement Limited Warranty, and 10-Year Parts Limited Warranty, online registration must be completed within 60 days of installation. Online registration is not required in California or Quebec.



Product Features

- High-efficiency cooling performance
- ComfortNet™ Communicating Systems compatible
- Two-Stage UltraTech Copeland® Scroll Compressor
- Factory-installed liquid line filter drier
- High- and low-pressure switches
- Quiet operation ensured by:
 - A high-density foam compressor sound cover
 - An efficient condenser fan motor
 - A wire fan discharge grille
- A louvered cabinet made of heavy-gauge galvanized steel protects the coil
- Appliance-quality, post-paint finish resists the effects of weather and time
- AHRI certified; ETL listed


Split System
Air Conditioners

Split System
Heat Pumps

Gas
Furnaces

Packaged
Units

Air
Handlers

Coils

Controls &
Thermostats

Daikin
Ductless

Model	Nominal Cooling (Tons)	Voltage-Phase	Dimensions			Service Valve		dBs	Ship Weight (lbs)	Energy Star Certified ¹
			W"	D"	H"	Liquid	Suction			
GSX160181F*	1.5	208/230-1	29	29	32¼	¾"	¾"	73.5	163	YES
GSX160241F*	2	208/230-1	29	29	32¼	¾"	¾"	73.5	160	YES
GSX160301F*	2.5	208/230-1	29	29	36¼	¾"	¾"	73.5	167	YES
GSX160311A*	2.5	208/230-1	29	29	38¼	¾"	¾"	73.5	179	YES
GSX160361F*	3	208/230-1	29	29	38¼	¾"	¾"	73.5	180	YES
GSX160371A*	3	208/230-1	35½	35½	36¼	¾"	¾"	73	204	YES
GSX160421F*	3.5	208/230-1	35½	35½	36¼	¾"	¾"	73	228	YES
GSX160481F*	4	208/230-1	35½	35½	36¼	¾"	¾"	73	241	YES
GSX160601F*	5	208/230-1	35½	35½	38¼	¾"	¾"	73	301	NO
GSX160611F*	5	208/230-1	35½	35½	38¼	¾"	¾"	73	314	NO

¹ Proper sizing and installation of equipment is critical to achieving optimal performance. Split system air conditioners and heat pumps must be matched with appropriate coil components to meet **ENERGY STAR** criteria. Ask your contractor for details or visit www.energystar.gov.

Goodman Manufacturing Company, L.P. reserves the right to discontinue, or change at any time, specifications or designs without notice or without incurring obligations.



* Complete warranty details available from your local dealer or at www.goodmanmfg.com. To receive the 10-Year Parts Limited Warranty, online registration must be completed within 60 days of installation. Online registration is not required in California or Quebec.



ENERGY STAR® and the **ENERGY STAR** mark are registered trademarks owned by the U.S. Environmental Protection Agency. **ENERGY STAR** products are third-party certified by an EPA-recognized Certification Body. Products that earn the **ENERGY STAR** prevent greenhouse gas emissions by meeting strict energy efficiency guidelines set by the U.S. Environmental Protection Agency.

Product Features

- Energy-efficient compressor
- Factory-installed liquid-line filter drier
- High-efficiency condenser coil made of corrugated aluminum fins and rifled refrigeration-grade copper tubing
- Louvered cabinet made of heavy-gauge galvanized steel that protects the coil, while its appliance-quality, post-paint finish resists the effects of weather and time
- Attractive design, finished in an architectural gray color that complements any home environment
- AHRI certified; ETL listed



Model	Nominal Cooling (Tons)	Voltage-Phase	Dimensions			Service Valve		dBs	Ship Weight (lbs)
			W"	D"	H"	Liquid	Suction		
GSX140181L*	1½	208/230-1	26	26	27½	⅜"	¼"	72.5	141
GSX140191K*	1½	208/230-1	26	26	27½	⅜"	¼"	71	146
GSX140241L*	2	208/230-1	26	26	27½	⅜"	¼"	74.3	141
GSX140251K*	2	208/230-1	26	26	27½	⅜"	¼"	71	146
GSX14030/311K*	2½	208/230-1	29	29	32½	⅜"	¼"	72	180
GSX14036/371K*	3	208/230-1	29	29	32½	⅜"	¼"	73	180
GSX14042/431K*	3½	208/230-1	29	29	36¼	⅜"	⅞"	73	207
GSX140481K*	4	208/230-1	35½	35½	36¼	⅜"	⅞"	74	242
GSX140601K*	5	208/230-1	35½	35½	38¼	⅜"	⅞"	75	280

Goodman Manufacturing Company, L.P. reserves the right to discontinue or change at any time specifications or designs without notice or without incurring obligations.



*Complete warranty details available from you local dealer or at www.goodmanmfg.com. To receive the 10-Year Parts Limited Warranty, online registration must be completed within 60 days of installation. Online registration is not required in California or Quebec.

Product Features

- Energy-efficient compressor
- Factory-installed in-line filter drier
- Copper tube/aluminum fin coil
- Louvered cabinet made of heavy-gauge galvanized steel that protects the coil
- Brass liquid and suction line service valves
- High-efficiency condenser coil made of corrugated aluminum fins and rifled refrigeration-grade copper tubing
- AHRI certified; ETL Listed

Split System
Air ConditionersSplit System
Heat PumpsGas
FurnacesPackaged
UnitsAir
Handlers

Coils

Controls &
ThermostatsDaikin
Ductless

Model	Nominal Cooling (Tons)	Voltage-Phase	Dimensions			Service Valve		dBs	Ship Weight (lbs)
			W"	D"	H"	Liquid	Suction		
GSX130181E*	1½	208/230-1	23	23	25¾	⅜"	¾"	75	117
GSX130241E*	2	208/230-1	26	26	27½	⅜"	¾"	75	120
GSX130301B*	2½	208/230-1	26	26	27½	⅜"	¾"	73	132
GSX130361E*	3	208/230-1	26	26	27½	⅜"	¾"	74	135
GSX130421B*	3½	208/230-1	29	29	36¾	⅜"	7/8"	75	189
GSX130481B*	4	208/230-1	29	29	36¾	⅜"	7/8"	76	193
GSX130601B*	5	208/230-1	29	29	40	⅜"	7/8"	77	202
GSX130611A*	5	208/230-1	35½	35½	38¾	⅜"	7/8"	72	233

Goodman Manufacturing Company, L.P. reserves the right to discontinue, or change at any time, specifications or designs without notice or without incurring obligations. This product may not be sold in the Southeast, Southwest, or Hawaii as of Jan. 1, 2015.



* Complete warranty details available from you local dealer or at www.goodmanmfg.com. To receive the 10-Year Parts Limited Warranty, online registration must be completed within 60 days of installation. Online registration is not required in California or Quebec.

Product Features

- Energy-efficient compressor
- Factory-installed in-line filter drier
- Copper tube/aluminum fin coil
- Louvered cabinet made of heavy-gauge galvanized steel that protects the coil
- Brass liquid and suction line service valves
- High-efficiency condenser coil made of corrugated aluminum fins and rifled refrigeration-grade copper tubing
- AHRI certified; ETL Listed



Model	Capacities (Tons)		Voltage-Phase	Dimensions			Service Valve		dBs	Ship Weight (lbs)
	Cooling	Heating		W"	D"	H"	Liquid	Suction		
DSZC180361A*	3	3	208/230-1	35½	35½	38¾	¾"	¾"	72	268
DSZC180481A*	4	4	208/230-1	35½	35½	38¾	¾"	1"	73	330
DSZC180601B*	5	5	208/230-1	35½	35½	38¾	¾"	1"	75	336

Goodman Manufacturing Company, L.P. reserves the right to discontinue, or change at any time, specifications or designs without notice or without incurring obligations.



* Complete warranty details available from your dealer or at www.goodmanmfg.com. To receive the Lifetime Compressor Limited Warranty (good for as long as you own your home), 10-Year Unit Replacement Limited Warranty, and 10-Year Parts Limited Warranty, online registration must be completed within 60 days of installation. Online registration is not required in California or Quebec.



Product Features

- Comfortnet™ communicating systems compatible
- Two-stage Ultratech Copeland® scroll compressor
- Factory-installed, bi-flow liquid line filter drier
- 5Mm SmartCoil™ condenser coil in select models
- SmartShift™ technology to ensure quiet, reliable defrost
- High- and low-pressure switches
- Quiet operation ensured by:
 - A high-density foam compressor sound cover
 - An efficient fan motor
 - A wire fan discharge grille
- Louvered cabinet made of heavy-gauge galvanized steel that protects the coil
- Appliance-quality, post-paint finish resists the effects of weather and time
- SmartShift™ defrost technology with short-cycle protection
- AHRI Certified; ETL Listed



DSZC16 — Up to 16 SEER / Up to 9.5 HSPF

Model	Capacities (Tons)		Voltage-Phase	Dimensions			Service Valve		dBs	Ship Weight (lbs)
	Cooling	Heating		W"	D"	H"	Liquid	Suction		
DSZC160241A*	2	2	208/230-1	29	29	38¾	⅜"	¾"	72	208
DSZC160361A*	3	3	208/230-1	35½	35½	38¾	⅜"	¾"	73	255
DSZC160481A*	4	4	208/230-1	35½	35½	38¾	⅜"	¾"	74	327
DSZC160601B*	5	5	208/230-1	35½	35½	38¾	⅜"	¾"	75	331

Goodman Manufacturing Company, L.P. reserves the right to discontinue, or change at any time, specifications or designs without notice or without incurring obligations.



* Complete warranty details available from your dealer or at www.goodmanmfg.com. To receive the Lifetime Compressor Limited Warranty (good for as long as you own your home), 10-Year Unit Replacement Limited Warranty, and 10-Year Parts Limited Warranty, online registration must be completed within 60 days of installation. Online registration is not required in California or Quebec.



Product Features

- ComfortNet™ communicating systems compatible
- Two-stage UltraTech Copeland® scroll compressor
- Expanded ComfortAlert™ diagnostics built in
- 5mm SmartCoil™ condenser coil in select models
- SmartShift™ technology to ensure quiet, reliable defrost
- Factory-installed, bi-flow liquid line filter drier
- Factory-installed suction line accumulator
- Quiet operation ensured by:
 - A high-density foam compressor sound cover
 - An efficient condenser fan motor
 - A wire fan discharge grille
- Factory-installed compressor crankcase heater
- Factory-installed high-capacity muffler
- Factory-installed coil and ambient temperature sensors
- High- and low-pressure switches
- Louvered cabinet made of heavy-gauge galvanized steel that protects the coil
- Appliance-quality, post-paint finish resists the effects of weather and time
- AHRI certified; ETL listed



Model	Capacities (Tons)		Voltage-Phase	Dimensions			Service Valve		dBs	Ship Weight (lbs)	Energy Star Certified ¹
	Cooling	Heating		W"	D"	H"	Liquid	Suction			
GSZ160181B*	1½	1½	208/230-1	29	29	36¾	⅜"	¼"	72	189	YES
GSZ160241B*	2	2	208/230-1	35½	35½	34¾	⅜"	¼"	75	200	YES
GSZ160301B*	2½	2½	208/230-1	35½	35½	34¾	⅜"	⅜"	75	206	YES
GSZ160361B*	3	3	208/230-1	35½	35½	40	⅜"	⅜"	73	240	YES
GSZ160421B*	3½	3½	208/230-1	29	29	36¾	⅜"	⅜"	73	237	YES
GSZ160481B*	4	4	208/230-1	35½	35½	34¾	⅜"	⅜"	74	270	YES
GSZ160601B*	5	5	208/230-1	35½	35½	40	⅜"	⅜"	76	326	YES

¹ Proper sizing and installation of equipment is critical to achieving optimal performance. Split system air conditioners and heat pumps must be matched with appropriate coil components to meet **ENERGY STAR** criteria. Ask your contractor for details or visit www.energystar.gov.

Goodman Manufacturing Company, L.P. reserves the right to discontinue, or change at any time, specifications or designs without notice or without incurring obligations.



*Complete warranty details available from your local dealer or at www.goodmanmfg.com. To receive the 10-Year Parts Limited Warranty, online registration must be completed within 60 days of installation. Online registration is not required in California or Quebec.



ENERGY STAR® and the **ENERGY STAR** mark are registered trademarks owned by the U.S. Environmental Protection Agency. **ENERGY STAR** products are third-party certified by an EPA-recognized Certification Body. Products that earn the **ENERGY STAR** prevent greenhouse gas emissions by meeting strict energy efficiency guidelines set by the U.S. Environmental Protection Agency.

Product Features

- High-efficiency scroll compressor
- SmartShift® Defrost technology with short-cycle protection
- High-density foam compressor sound blanket
- Factory-installed bi-flow liquid-line filter drier
- Factory-installed suction-line accumulator
- Factory-installed compressor crankcase heater
- Factory-installed high-capacity muffler
- High- and low-pressure switches
- Copper tube/ enhanced aluminum fin coil
- Louvered sound control top design
- Steel louver coil guard
- Heavy-gauge galvanized-steel cabinet
- Attractive Architectural Gray powder-paint finish with 500-hour salt-spray approval
- AHRI Certified; ETL Listed

SMARTSHIFT®
HEAT PUMP DEFROST CONTROL



Split System
Air Conditioners

Split System
Heat Pumps

Gas
Furnaces

Packaged
Units

Air
Handlers

Coils

Controls &
Thermostats

Daikin
Ductless

GSZ14 — Up to 15 SEER / Up to 9.0 HSPF

Model	Capacities (Tons)		Voltage-Phase	Dimensions			Service Valve		dBs	Ship Weight (lbs)
	Cooling	Heating		W"	D"	H"	Liquid	Suction		
GSZ140181K*	1½	1½	208/230-1	29	29	34½	¾"	¾"	72	154
GSZ140241K*	2	2	208/230-1	29	29	34½	¾"	¾"	72	154
GSZ140301K*	2½	2½	208/230-1	29	29	36¼	¾"	¾"	74	182
GSZ140361K*	3	3	208/230-1	29	29	36¼	¾"	¾"	74	184
GSZ140421K*	3½	3½	208/230-1	35½	35½	39¼	¾"	¾"	75	207
GSZ140481K*	4	4	208/230-1	29	29	36¼	¾"	¾"	75	237
GSZ140491K*	4	4	208/230-1	35½	35½	34½	¾"	¾"	76	288
GSZ140601K*	5	5	208/230-1	35½	35½	34½	¾"	¾"	76	292

Goodman Manufacturing Company, L.P. reserves the right to discontinue, or change at any time, specifications or designs without notice or without incurring obligations.



* Complete warranty details available from you local dealer or at www.goodmanmfg.com. To receive the 10-Year Parts Limited Warranty, online registration must be completed within 60 days of installation. Online registration is not required in California or Quebec.



Product Features

- Energy-efficient compressor
- SmartShift® technology to ensure quiet reliable defrost
- Factory-installed bi-flow liquid-line-filter drier
- Factory-installed suction-line accumulator
- Factory-installed compressor crankcase heater
- Factory-installed high-capacity muffler
- High- and low-pressure switches
- Copper tube/ enhanced aluminum fin coil
- Special-order long line set high-rise models available; see website for details.
- Goodman brand sound control top design
- Heavy-gauge galvanized-steel cabinet with baked-on powder-paint finish and 500-hour salt-spray approval
- AHRI certified; ETL listed



Gas Furnaces



GMVM97 — Up to 98% AFUE

Modulating, Variable-Speed ECM Gas Furnace

Model	High-Fire Heating ¹		Low-Fire Heating ¹		AFUE %	Tons A/C ²	Dimensions			Ship Weight (lbs)
	Input	Output	Input	Output			W"	D"	H"	
GMVM970603BNA	60,000	58,800	30,000	29,400	98	3	17½	28¾	34½	118
GMVM970803BNA	80,000	77,600	40,000	38,800	97	3	17½	28¾	34½	121
GMVM970804CNA	80,000	78,400	40,000	39,200	98	4	21"	28¾	34½	142
GMVM971005CNA	100,000	97,000	50,000	48,500	97	5	21"	28¾	34½	144
GMVM971205DNA	120,000	116,400	60,000	58,200	97	5	24½	28¾	34½	157

¹ BTU/h ² Max tons @ 0.5" ESP

Goodman Manufacturing Company, L.P. reserves the right to discontinue, or change at any time, specifications or designs without notice or without incurring obligations.



* Complete warranty details available from your local dealer or at www.goodmanmfg.com. To receive the Lifetime Heat Exchanger Limited Warranty (good for as long as you own your home), 10-Year Unit Replacement Heat Exchanger Limited Warranty, and 10-Year Parts Limited Warranty, online registration must be completed within 60 days of installation. Online registration is not required in California or Quebec.



ENERGY STAR® and the **ENERGY STAR** mark are registered trademarks owned by the U.S. Environmental Protection Agency. **ENERGY STAR** products are third-party certified by an EPA-recognized Certification Body. Products that earn the **ENERGY STAR** prevent greenhouse gas emissions by meeting strict energy efficiency guidelines set by the U.S. Environmental Protection Agency.

Product Features

- Multi-position installation:
upflow, horizontal left or right
- ComfortNet™ communicating systems compatible
- Heavy-duty aluminized-steel tubular heat exchanger
- Stainless-steel secondary heat exchanger
- Self-calibrating modulating gas valve auto-configured for each installation
- Durable silicon nitride igniter
- Quiet variable-speed induced draft blower
- Self-diagnostic control board with constant memory fault code history output to a dual 7-segment display
- Color-coded low-voltage terminals with provisions for electronic air cleaner and humidifier
- Efficient and quiet variable-speed airflow system gently ramps up or down according to heating or cooling demand
- Multiple continuous fan speed options offer quiet air circulation
- Auto-comfort and enhanced dehumidification modes available



Modulating, Variable-Speed ECM Gas Furnace

Model	High-Fire Heating ¹		Low-Fire Heating ¹		AFUE %	Tons A/C ²	Dimensions			Ship Weight (lbs)
	Input	Output	Input	Output			W"	D"	H"	
GCVM970603BNA	60,000	58,200	30,000	29,100	97	3	17½	28¾	34½	117
GCVM970803BNA	80,000	77,600	40,000	38,800	97	3	17½	28¾	34½	122
GCVM970804CNA	80,000	77,600	40,000	38,800	97	4	21"	28¾	34½	144
GCVM971005CNA	100,000	97,000	50,000	48,500	97	5	21"	28¾	34½	146

¹ BTU/h ² Max tons @ 0.5" ESP

Goodman Manufacturing Company, L.P. reserves the right to discontinue, or change at any time, specifications or designs without notice or without incurring obligations.



* Complete warranty details available from your local dealer or at www.goodmanmfg.com. To receive the Lifetime Heat Exchanger Limited Warranty (good for as long as you own your home), 10-Year Unit Replacement Heat Exchanger Limited Warranty, and 10-Year Parts Limited Warranty, online registration must be completed within 60 days of installation. Online registration is not required in California or Quebec.



ENERGY STAR® and the **ENERGY STAR** mark are registered trademarks owned by the U.S. Environmental Protection Agency. **ENERGY STAR** products are third-party certified by an EPA-recognized Certification Body. Products that earn the **ENERGY STAR** prevent greenhouse gas emissions by meeting strict energy efficiency guidelines set by the U.S. Environmental Protection Agency.

Product Features

- Multi-position installation: downflow, horizontal left or right
- ComfortNet™ communicating systems compatible
- Heavy-duty aluminized-steel tubular heat exchanger
- Stainless-steel secondary heat exchanger
- Self-calibrating modulating gas valve auto-configured for each installation
- Durable silicon nitride igniter
- Quiet variable-speed induced draft blower
- Self-diagnostic control board with constant memory fault code history output to a dual 7-segment display
- Color-coded low-voltage terminals with provisions for electronic air cleaner and humidifier
- Efficient and quiet variable-speed airflow system gently ramps up or down according to heating or cooling demand
- Multiple continuous fan speed options offer quiet air circulation
- Auto-comfort and enhanced dehumidification modes available



GMVC96/GCVC96 — Up to 96% AFUE

Two-Stage, Variable-Speed ECM Gas Furnace

Model	High-Fire Heating ¹		Low-Fire Heating ¹		AFUE %	Tons A/C ²	Dimensions			Ship Weight (lbs)
	Input	Output	Input	Output			W"	D"	H"	
GMVC960403BNA	40,000	38,400	28,000	26,880	96	3	17½	28¾	34½	114
GMVC960603BNA	60,000	57,600	42,000	40,320	96	3	17½	28¾	34½	117
GMVC960803BNA	80,000	76,800	56,000	53,760	96	3	17½	28¾	34½	120
GMVC960804CNA	80,000	76,800	56,000	53,760	96	4	21"	28¾	34½	141
GMVC961005CNA	100,000	96,000	70,000	67,200	96	5	21"	28¾	34½	143
GMVC961205DNA	120,000	115,200	84,000	80,640	96	5	24½	28¾	34½	156
GCVC960403BNA	40,000	38,400	28,000	26,880	96	3	17½	28¾	34½	116
GCVC960603BNA	60,000	57,600	42,000	40,320	96	3	17½	28¾	34½	119
GCVC960804CNA	80,000	76,800	56,000	53,760	96	4	21"	28¾	34½	143
GCVC961005CNA	100,000	96,000	70,000	67,200	96	5	21"	28¾	34½	145
GCVC961205DNA	120,000	115,200	84,000	80,640	96	5	24½	28¾	34½	158

¹ BTU/h ² Max tons @ 0.5" ESP

Goodman Manufacturing Company, L.P. reserves the right to discontinue, or change at any time, specifications or designs without notice or without incurring obligations.



* Complete warranty details available from your local dealer or at www.goodmanmfg.com. To receive the Lifetime Heat Exchanger Limited Warranty (good for as long as you own your home), 10-Year Unit Replacement Heat Exchanger Limited Warranty, and 10-Year Parts Limited Warranty, online registration must be completed within 60 days of installation. Online registration is not required in California or Quebec.



ENERGY STAR® and the **ENERGY STAR** mark are registered trademarks owned by the U.S. Environmental Protection Agency. **ENERGY STAR** products are third-party certified by an EPA-recognized Certification Body. Products that earn the **ENERGY STAR** prevent greenhouse gas emissions by meeting strict energy efficiency guidelines set by the U.S. Environmental Protection Agency.

Product Features

- Multi-position installation:
GMVC96 — upflow, horizontal left or right
GCVC96 — downflow, horizontal left or right
- ComfortNet™ communicating systems compatible
- Heavy-duty aluminized-steel tubular heat exchanger
- Stainless-steel secondary heat exchanger
- Two-stage gas valve provides quiet, economical heating
- Durable silicon nitride igniter
- Quiet two-speed induced draft blower
- Self-diagnostic control board with constant memory fault code history output to a dual 7-segment display
- Color-coded low-voltage terminals with provisions for electronic air cleaner and humidifier
- Efficient and quiet variable-speed airflow system gently ramps up or down according to heating or cooling demand
- Multiple continuous fan speed options offer quiet air circulation
- Auto-comfort and enhanced dehumidification modes available



GMEC96 — Up to 96% AFUE

Two-Stage, Multi-Speed ECM Gas Furnace

Model	High-Fire Heating ¹		Low-Fire Heating ¹		AFUE %	Tons A/C ²	Dimensions			Ship Weight (lbs)
	Input	Output	Input	Output			W"	D"	H"	
GMEC960302BNA	30,000	28,800	21,000	20,160	96	2	17½	28¾	34½	111
GMEC960402BNA	40,000	38,400	28,000	26,880	96	3	17½	28¾	34½	112
GMEC960603BNA	60,000	57,600	42,000	40,320	96	3	17½	28¾	34½	115
GMEC960803BNA	80,000	76,800	56,000	53,760	96	3	17½	28¾	34½	118
GMEC961004CNA	100,000	96,000	70,000	67,200	96	4	21"	28¾	34½	140
GMEC961205DNA	120,000	115,200	84,000	80,640	96	5	24½	28¾	34½	154

¹ BTU/h ² Max tons @ 0.5" ESP

Goodman Manufacturing Company, L.P. reserves the right to discontinue, or change at any time, specifications or designs without notice or without incurring obligations.



* Complete warranty details available from your local dealer or at www.goodmanmfg.com. To receive the Lifetime Heat Exchanger Limited Warranty (good for as long as you own your home), 10-Year Unit Replacement Heat Exchanger Limited Warranty, and 10-Year Parts Limited Warranty, online registration must be completed within 60 days of installation. Online registration is not required in California or Quebec.



ENERGY STAR® and the **ENERGY STAR** mark are registered trademarks owned by the U.S. Environmental Protection Agency. **ENERGY STAR** products are third-party certified by an EPA-recognized Certification Body. Products that earn the **ENERGY STAR** prevent greenhouse gas emissions by meeting strict energy efficiency guidelines set by the U.S. Environmental Protection Agency.

Product Features

- Multi-position installation: upflow, horizontal left or right
- Heavy-duty aluminized-steel tubular heat exchanger
- Stainless-steel secondary heat exchanger
- Two-stage gas valve provides quiet, economical heating
- Durable silicon nitride igniter
- Quiet two-speed induced draft blower
- Self-diagnostic control board with constant memory fault code history output to a dual LED
- Color-coded low-voltage terminals with provisions for electronic air cleaner and humidifier
- Efficient and quiet multi-speed ECM motor
- Heavy-gauge steel cabinet with durable finish
- Foil-faced insulated heat exchanger section supports added energy-efficient operation



GMSS96 / GCSS96 — Up to 96% AFUE

Single-Stage, Multi-Speed Gas Furnace

Model	Heating Capacity ¹		AFUE %	Tons A/C ²	Dimensions			Ship Weight (lbs)
	Input	Output			W"	D"	H"	
GMSS960402BNA	40,000	38,400	96	3	17½	28¾	34½	111
GMSS960603BNA	60,000	57,600	96	3	17½	28¾	34½	114
GMSS960803BNA	80,000	76,800	96	3	17½	28¾	34½	116
GMSS960804CNA	80,000	76,800	96	4	21"	28¾	34½	139
GMSS960805CNA	80,000	76,800	96	5	21"	28¾	34½	140
GMSS961005CNA	100,000	96,000	96	5	21"	28¾	34½	142
GMSS961205DNA	120,000	115,200	96	5	24½	28¾	34½	154
GCSS960402BNA	40,000	38,400	96	3	17½	28¾	34½	111
GCSS960603BNA	60,000	57,600	96	3	17½	28¾	34½	114
GCSS960804CNA	80,000	76,800	96	4	21"	28¾	34½	139
GCSS961005CNA	100,000	95,000	95	5	21"	28¾	34½	142
GCSS961205DNA	120,000	114,000	95	5	24½	28¾	34½	154

¹ BTU/h ² Max tons @ 0.5" ESP

Goodman Manufacturing Company, L.P. reserves the right to discontinue, or change at any time, specifications or designs without notice or without incurring obligations.



* Complete warranty details available from your local dealer or at www.goodmanmfg.com. To receive the Lifetime Heat Exchanger Limited Warranty (good for as long as you own your home), 10-Year Unit Replacement Heat Exchanger Limited Warranty, and 10-Year Parts Limited Warranty, online registration must be completed within 60 days of installation. Online registration is not required in California or Quebec.

Product Features

- Multi-position installation:
GMSS96 — upflow, horizontal left or right
GCSS96 — downflow, horizontal left or right
- Heavy-duty aluminized-steel tubular heat exchanger
- Stainless-steel secondary heat exchanger
- Single-stage gas valve provides quiet, economical heating
- Durable silicon nitride igniter
- Quiet single-speed induced draft blower
- Self-diagnostic control board with constant memory
fault code history output to a LED display
- Color-coded low-voltage terminals
- Efficient and quiet single-speed airflow system



Single-Stage Multi-Speed Gas Furnace

Model	Heating Capacity ¹		AFUE %	Tons A/C ²	Dimensions			Ship Weight (lbs)
	Input	Output			W"	D"	H"	
GMSS920402BNA	40,000	36,800	92	3	17½	28¾	34½	109
GMSS920603BNA	60,000	55,200	92	3	17½	28¾	34½	112
GMSS920803BNA	80,000	73,600	92	3	17½	28¾	34½	115
GMSS920804CNA	80,000	73,600	92	5	21"	28¾	34½	137
GMSS920805CNA	80,000	73,600	92	5	21"	28¾	34½	138
GMSS921004CNA	100,000	92,000	92	5	21"	28¾	34½	139
GMSS921005CNA	100,000	92,000	92	5	21"	28¾	34½	140
GMSS921205DNA	120,000	110,520	92	5	24½	28¾	34½	152
GCSS920402BNA	40,000	36,840	92	3	17½	28¾	34½	109
GCSS920603BNA	60,000	55,260	92	3	17½	28¾	34½	112
GCSS920804CNA	80,000	73,680	92	4	21	28¾	34½	137
GCSS921005CNA	100,000	92,100	92	4	21	28¾	34½	140

¹ BTU/h ² Max tons @ 0.5" ESP

Goodman Manufacturing Company, L.P. reserves the right to discontinue, or change at any time, specifications or designs without notice or without incurring obligations.



* Complete warranty details available from your local dealer or at www.goodmanmfg.com. To receive the Lifetime Heat Exchanger Limited Warranty (good for as long as you own your home) and 10-Year Parts Limited Warranty, online registration must be completed within 60 days of installation. Online registration is not required in California or Quebec.

Product Features

- Multi-position installation:
GMSS92 — upflow, horizontal left or right
GCSS92 — downflow, horizontal left or right
- Heavy-duty aluminized-steel tubular heat exchanger
- Stainless-steel secondary heat exchanger
- Single-stage gas valve provides quiet, economical heating
- Durable silicon nitride igniter
- Heavy gauge steel cabinet with durable finish
- Quiet single-speed induced draft blower
- Self-diagnostic control board with a LED display
- Color-coded low-voltage terminals
- Foil-faced insulated heat exchanger cabinet



GMVC8 — Up to 80% AFUE

Two-Stage, Variable-Speed Gas Furnace

Model	High-Fire Heating ¹		Low-Fire Heating ¹		AFUE %	Tons A/C ²	Dimensions			Ship Weight (lbs)
	Input	Output	Input	Output			W"	D"	H"	
GMVC80604B*B*	60,000	48,000	42,000	33,600	80	1½ to 4	17½	28	33¾	107
GMVC80805C*B*	80,000	64,000	56,000	44,800	80	2 to 5	21	28	33¾	121
GMVC81005C*B*	100,000	80,000	70,000	56,000	80	2 to 5	21	28	33¾	124

¹ BTU/h ² Max tons @ 0.5" ESP

Goodman Manufacturing Company, L.P. reserves the right to discontinue, or change at any time, specifications or designs without notice or without incurring obligations.



* Complete warranty details available from your local dealer or at www.goodmanmfg.com. To receive the Lifetime Heat Exchanger Limited Warranty (good for as long as you own your home), 10-Year Unit Replacement Heat Exchanger Limited Warranty, and 10-Year Parts Limited Warranty, online registration must be completed within 60 days of installation. Online registration is not required in California or Quebec.



Product Features

- Multi-position installation:
upflow, horizontal left or right
- Aluminized-steel tubular primary heat exchanger
- ComfortNet™ Communicating Systems compatible
- Efficient and quiet, variable-speed ECM circulator motor
- Durable silicon nitride igniter
- Electronic ignition control with DualSaver™ technology
- Two-stage gas valve
- Electronic control board with self-diagnostics
- All models comply with California Low NOx emissions standards
- Corrosion-resistant vent blower
- Fully insulated, heavy-gauge steel cabinet with durable baked-enamel finish



Two-Stage Convertible, Multi-Speed ECM Gas Furnace

Model	Heating Capacity ¹		AFUE %	Tons A/C ²	Dimensions			Ship Weight (lbs)
	Input	Output			W"	D"	H"	
GME80603B*B*	60,000	48,000	80	3	17½	28	33¾	98
GME80805C*B*	80,000	64,000	80	5	21	28	33¾	116
GME80805D*A*	80,000	64,000	80	5	24½	28	33¾	123
GME81005C*B*	100,000	80,000	80	5	21	28	33¾	120

¹ BTU/h ² Max tons @ 0.5" ESP

Goodman Company, L.P. reserves the right to discontinue, or change at any time, specifications or designs without notice or without incurring obligations.



* Complete warranty details available from your local dealer or at www.goodmanmfg.com. To receive the Lifetime Heat Exchanger Limited Warranty (good for as long as you own your home), 10-Year Unit Replacement Heat Exchanger Limited Warranty, and 10-Year Parts Limited Warranty, online registration must be completed within 60 days of installation. Online registration is not required in California or Quebec.

Product Features

- Multi-position installation: upflow, horizontal left or right
- Dual-diameter tubular heat exchanger
- Energy-efficient, multi-speed ECM blower motor
- Electronic ignition control
- Two-stage gas valve
- Durable Silicon Nitride igniter
- Electronic control board with self-diagnostics
- All models comply with California 40ng/J Low NOx emissions standards
- Corrosion-resistant vent blower
- Fully insulated, heavy-gauge steel cabinet with durable baked-enamel finish



Split System
Air Conditioners

Split System
Heat Pumps

Gas
Furnaces

Packaged
Units

Air
Handlers

Coils

Controls &
Thermostats

Daikin
Ductless

GMH8 / GDH8 — Up to 80% AFUE

Two-Stage Convertible, Multi-Speed Gas Furnace

Model	Heating Capacity ¹		AFUE %	Tons A/C ²	Dimensions			Ship Weight (lbs)
	Input	Output			W"	D"	H"	
GMH80403A*B*	40,000	32,000	80	3	14	28	33½	86
GMH80603A*B*	60,000	48,000	80	3	14	28	33½	90
GMH80604B*B*	60,000	48,000	80	4	17½	28	33½	98
GMH80803B*B*	80,000	64,000	80	3	17½	28	33½	106
GMH80804B*B*	80,000	64,000	80	4	17½	28	33½	107
GMH80805C*B*	80,000	64,000	80	5	21	28	33½	114
GMH81005C*B*	100,000	80,000	80	5	21	28	33½	118
GMH81205D*B*	120,000	96,000	80	5	24½	28	33½	132
GMH81405D*C*	140,000	112,000	80	5	24½	28	33½	132
GDH80403A*B*	40,000	32,000	80	3	14	28	33½	88
GDH80603A*B*	60,000	48,000	80	3	14	28	33½	92
GDH80804B*B*	80,000	64,000	80	4	17½	28	33½	106
GDH81005C*B*	100,000	80,000	80	5	21	28	33½	114

¹ BTU/h ² Max tons @ 0.5" ESP

Goodman Manufacturing Company, L.P. reserves the right to discontinue, or change at any time, specifications or designs without notice or without incurring obligations.



* Complete warranty details available from your local dealer or at www.goodmanmfg.com. To receive the Lifetime Heat Exchanger Limited Warranty (good for as long as you own your home), 10-Year Unit Replacement Heat Exchanger Limited Warranty, and 10-Year Parts Limited Warranty, online registration must be completed within 60 days of installation. Online registration is not required in California or Quebec.

Product Features

- Installation position:
GMH8: upflow, horizontal left or right
GDH8: dedicated downflow
- Dual-diameter tubular heat exchanger
- Durable silicon nitride igniter
- Electronic control board with self-diagnostics
- Run-tested at factory prior to shipment
- Two-stage gas valve
- Corrosion-resistant vent blower
- Powder-paint finish
- Fully insulated cabinet
- Electronic ignition control with DualSaver™ technology
- Convenient left or right connection for gas and electric service



Model	Heating Capacity ¹		AFUE %	Tons A/C ²	Dimensions			Ship Weight (lbs)
	Input	Output			W"	D"	H"	
GMS80403A*B*	40,000	32,000	80	3	14	28	33½	84
GMS80603A*B*	60,000	48,000	80	3	14	28	33½	88
GMS80604B*B*	60,000	48,000	80	4	17½	28	33½	98
GMS80804B*B*	80,000	64,000	80	4	17½	28	33½	106
GMS80805C*B*	80,000	64,000	80	5	21	28	33½	114
GMS81005C*B*	100,000	80,000	80	5	21	28	33½	118
GMS81205D*B*	120,000	96,000	80	5	24½	28	33½	130
GMS81405D*C*	140,000	112,000	80	5	24½	28	33½	130
GHS80403A*B*	40,000	32,000	80	3	14	28	33½	90
GHS80604B*B*	60,000	48,000	80	4	17½	28	33½	102
GHS80805C*B*	80,000	64,000	80	5	21½	28	33½	117
GDS80403A*B*	40,000	32,000	80	3	14	28	33½	88
GDS80603A*B*	60,000	48,000	80	3	14	28	33½	92
GDS80804B*B*	80,000	64,000	80	4	17½	28	33½	105
GDS81005C*B*	100,000	80,000	80	5	21	28	33½	113

¹ BTU/h ² Max tons @ 0.5" ESP

Goodman Manufacturing Company, L.P. reserves the right to discontinue, or change at any time, specifications or designs without notice or without incurring obligations.



* Complete warranty details available from your local dealer or at www.goodmanmfg.com. To receive the Lifetime Heat Exchanger Limited Warranty (good for as long as you own your home) and 10-Year Parts Limited Warranty, online registration must be completed within 60 days of installation. Online registration is not required in California or Quebec.

Product Features

- Multi-position installation:
GMS8/GHS8- upflow, horizontal left or right
GDS8- Dedicated downflow
- Aluminized-steel dual-diameter tubular heat exchanger
- Corrosion-resistant blower
- Powder-paint finish
- Quiet, efficient hot surface igniter
- Fully insulated cabinet
- Quiet multi-speed direct-drive circulator blower motor
- Electronic ignition control
- Quiet single-speed, induced-draft blower
- Run-Tested at factory prior to shipment

Split System
Air ConditionersSplit System
Heat PumpsGas
FurnacesPackaged
UnitsAir
Handlers

Coils

Controls &
ThermostatsDaikin
Ductless





Packaged Units

GPC15H Air Conditioner — Up to 15 SEER

Model	Cooling Capacities		Electric Heat (kW)	SEER / EER	Voltage-Phase	Dimensions			dBs	Ship Weight (lbs)
	Tons ¹	CFM ²				W"	D"	H"		
GPC1524H41A*	2	875	5, 8, 10	15.0 / 12.0	208/230-1	66	34	30½	76	305
GPC1530H41A*	2½	1,050	5, 8, 10, 15	15.0 / 12.0	208/230-1	66	34	30½	76	310
GPC1536H41A*	3	1,200	5, 8, 10, 15	15.0 / 12.0	208/230-1	66	34	30½	78	320
GPC1542H41A*	3½	1,300	5, 8, 10, 15, 20	15.0 / 12.0	208/230-1	66	34	30½	78	355
GPC1548H41A*	4	1,600	5, 8, 10, 15, 20	15.0 / 12.0	208/230-1	66	34	35½	80	370
GPC1560H41A*	5	1,600	5, 8, 10, 15, 20	15.0 / 12.0	208/230-1	66	34	35½	80	375

¹ Tons ² BTU/h

Goodman Manufacturing Company, L.P. reserves the right to discontinue, or change at any time, specifications or designs without notice or without incurring obligations.



*Complete warranty details available from you local dealer or at www.goodmanmfg.com. To receive the 10-Year Parts Limited Warranty, online registration must be completed within 60 days of installation. Online registration is not required in California or Quebec.



Product Features

- Energy-efficient compressor with internal relief valve
- Multi-speed ECM indoor blower motor
- Quiet horizontal discharge
- All-aluminum evaporator coil
- Copper tube / aluminum fin condenser coil
- Totally enclosed, permanently lubricated condenser fan motor
- 5 kW to 20 kW electric heat kit available as a field-installed option
- Heavy-gauge galvanized-steel cabinet with attractive Architectural Gray powder-paint finish
- Fully insulated blower compartment has convenient access panels
- Cabinet air leakage less than 2.0% at 1.0 inch H₂O when tested in accordance with ASHRAE standard 193
- Cabinet air leakage less than 1.4% at 0.5 inch H₂O when tested in accordance with ASHRAE standard 193
- Louvered condenser coil protection
- AHRI Certified; ETL listed

Model	Cooling Capacities		Electric Heat (kW)	SEER / EER	Voltage-Phase	Dimensions			dBs	Ship Weight (lbs)
	Tons ¹	CFM ²				W"	D"	H"		
GPC1424M41A*	2	800	5, 8, 10	14 / 11	208/230-1	47	51	34¾	78.0	319
GPC1430M41A*	2.5	1,000	5, 8, 10, 15	14 / 11	208/230-1	47	51	34¾	78.0	342
GPC1436M41A*	3	1,200	5, 8, 10, 15	14 / 11	208/230-1	47	51	34¾	80.1	365
GPC1442M41A*	3.5	1,325	5, 8, 10, 15	14 / 11	208/230-1	47	51	34¾	78.0	388
GPC1448M41A*	4	1,600	5, 8, 10, 15, 20	14 / 11	208/230-1	47	51	42¾	81.7	435
GPC1460M41A*	5	1,700	5, 8, 10, 15, 20	14 / 11	208/230-1	47	51	42¾	80.2	458

¹ Tons ² BTU/h

Goodman Manufacturing Company, L.P. reserves the right to discontinue, or change at any time, specifications or designs without notice or without incurring obligations.



* Complete warranty details available from you local dealer or at www.goodmanmfg.com. To receive the 10-Year Parts Limited Warranty, online registration must be completed within 60 days of installation. Online registration is not required in California or Quebec.



Product Features



- Energy-efficient compressor
- Multi-speed EEM indoor blower motor
- Copper tube/aluminum fin condenser coil
- All-Aluminum evaporator coil
- Field-installed electric heat kits available
- Totally enclosed, permanently lubricated condenser fan motor
- Electric heat kits available as field-installed options
- Convertible airflow: horizontal or downflow
- Heavy-gauge galvanized-steel cabinet with attractive Architectural Gray powder-paint finish
- Fully insulated blower compartment with convenient access panels
- Cabinet air leakage less than 2.0% at 1.0 inch H₂O when tested in accordance with ASHRAE standard 193
- Cabinet air leakage less than 1.4% at 0.5 inch H₂O when tested in accordance with ASHRAE standard 193
- Louvered condenser coil protection
- AHRI Certified; ETL Listed

GPC14H Air Conditioner — 14 SEER

Model	Cooling Capacities		SEER/ EER	Electric Heat (kW)	Voltage- Phase	Dimensions			dBs	Ship Weight (lbs)
	Tons ¹	CFM ²				W"	D"	H"		
GPC1424H41C*/D*	2	875	14.0 / 12.0	5, 8, 10	208/230-1	66	33	30½	76	305
GPC1424H41E*	2	875	14.0 / 12.0	5, 8, 10	208/230-1	66	33	30½	76	300
GPC1430H41C*/D*	2½	1,050	14.0 / 12.0	5, 8, 10, 15	208/230-1	66	33	30½	76	310
GPC1430H41E*	2½	1,050	14.0 / 12.0	5, 8, 10, 15	208/230-1	66	33	30½	76	305
GPC1436H41C*/D*	3	1,200	14.0 / 12.0	5, 8, 10, 15	208/230-1	66	33	30½	78	315
GPC1442H41C*/D*	3½	1,200	14.0 / 12.0	5, 8, 10, 15, 20	208/230-1	66	33	30½	78	360
GPC1442H41E*	3½	1,300	14.0 / 12.0	5, 8, 10, 15, 20	208/230-1	66	33	30½	78	350
GPC1448H41C*/D*	4	1,600	14.0 / 12.0	5, 8, 10, 15, 20	208/230-1	66	33	38½	80	370
GPC1448H41E*	4	1,600	14.0 / 12.0	5, 8, 10, 15, 20	208/230-1	66	33	35½	80	365
GPC1460H41C*/D*	5	1,600	14.0 / 12.0	5, 8, 10, 15, 20	208/230-1	66	33	38½	80	375
GPC1460H41E*	5	1,600	14.0 / 11.5	5, 8, 10, 15, 20	208/230-1	66	33	35½	80	370

¹ Tons ² BTU/h

Goodman Manufacturing Company, L.P. reserves the right to discontinue, or change at any time, specifications or designs without notice or without incurring obligations.

* Complete warranty details available from you local dealer or at www.goodmanmfg.com. To receive the 10-Year Parts Limited Warranty, online registration must be completed within 60 days of installation. Online registration is not required in California or Quebec.



Product Features

- Energy-efficient compressor
- Multi-speed EEM blower motor
- All-Aluminum evaporator coil
- Quiet horizontal discharge
- Copper tube / aluminum fin condenser coil
- Totally enclosed, permanently lubricated condenser fan motor
- Electric heat kit available as a field-installed option
- Louvered condenser coil protection
- Heavy-gauge galvanized-steel cabinet with attractive Architectural Gray powder-paint finish
- Fully insulated blower compartment with convenient access panels
- Cabinet air leakage less than 2.0% at 1.0 inch H₂O when tested in accordance with ASHRAE standard 193
- Cabinet air leakage less than 1.4% at 0.5 inch H₂O when tested in accordance with ASHRAE standard 193
- AHRI Certified; ETL Listed

GPH16M Heat Pump — Up to 16 SEER / 8.2 HSPF

Model	Nominal Capacities (BTU/h)			Electric Heat (kW)	SEER / EER	Voltage-Phase	Dimensions			dBs	Ship Weight (lbs)
	Cooling ¹	Heating ¹	CFM ²				W"	D"	H"		
GPB1624M41**	2	2	860	5,8,10	16/12	208/230-1	47	51	34¾	76	366
GPB1630M41**	2.5	2.5	1,050	5,8,10,15	15.5/12	208/230-1	47	51	34¾	76	375
GPB1636M41**	3	3	1,200	5,8,10,15	16/12	208/230-1	47	51	34¾	76	428
GPB1642M41**	3.5	3.5	1,300	5,8,10,15	16/12	208/230-1	47	51	42¾	78	472
GPB1648M41**	4	4	1,600	5,8,10,15,20	16/12	208/230-1	47	51	42¾	78	470

¹ Tons ² BTU/h

Goodman Manufacturing Company, L.P. reserves the right to discontinue, or change at any time, specifications or designs without notice or without incurring obligations.



* Complete warranty details available from you local dealer or at www.goodmanmfg.com. To receive the 10-Year Parts Limited Warranty, online registration must be completed within 60 days of installation. Online registration is not required in California or Quebec.



Product Features

- Energy-efficient compressor with internal relief valve
- Two-stage heating & cooling
- Multi-Speed EEM blower motor
- Liquid-line filter drier
- Convertible airflow: horizontal or downflow
- Copper tube/aluminum fin condenser coils
- All-aluminum evaporator coil
- Electric heat kit available as a field-installed option
- Louvered condenser coil protection
- Heavy-gauge galvanized-steel cabinet with attractive Architectural Gray powder-paint finish
- Cabinet air leakage less than 2.0% at 1.0 inch H₂O when tested in accordance with ASHRAE standard 193
- Cabinet air leakage less than 1.4% at 0.5 inch H₂O when tested in accordance with ASHRAE standard 193
- Totally enclosed, permanently lubricated condenser fan motor
- Fully insulated air-handling compartment with convenient access panels
- AHRI Certified; ETL Listed

Split System
Air Conditioners

Split System
Heat Pumps

Gas
Furnaces

Packaged
Units

Air
Handlers

Coils

Controls &
Thermostats

Daikin
Ductless

GPH16H Heat Pump — Up to 16 SEER / 8.0 HSPF

Model	Nominal Capacities			Electric Heat (kW)	SEER / EER	Voltage-Phase	Dimensions			dBs	Ship Weight (lbs)
	Cooling ¹	Heating ¹	CFM ²				W"	D"	H"		
GPH1624H41**	2	2	875	5, 8, 10	16.0 / 13.0	208/230-1	66	34	30	76	325
GPH1630H41**	2½	2½	1,050	5, 8, 10, 15	16.0 / 12.5	208/230-1	66	34	30	76	325
GPH1636H41**	3	3	1,200	5, 8, 10, 15	16.0 / 13.0	208/230-1	66	34	35	78	385
GPH1642H41**	3½	3½	1,300	5, 8, 10, 15, 20	16.0 / 12.0	208/230-1	66	34	35	78	385
GPH1648H41**	4	4	1,600	5, 8, 10, 15, 20	16.0 / 12.0	208/230-1	66	34	35	80	410

¹ Tons ² BTU/h

Goodman Manufacturing Company, L.P., reserves the right to discontinue or change at any time specifications or designs without notice or without incurring obligations.



* Complete warranty details available from you local dealer or at www.goodmanmfg.com. To receive the 10-Year Parts Limited Warranty, online registration must be completed within 60 days of installation. Online registration is not required in California or Quebec.



Product Features

- Energy-efficient compressor
- Multi-speed ECM blower motor
- All-aluminum evaporator coil
- Copper tube/aluminum fin coil
- Totally enclosed, permanently lubricated condenser fan motor
- Quiet horizontal discharge
- Electric heat kit available as a field-installed option
- Louvered condenser coil protection
- Heavy-gauge galvanized-steel cabinet with attractive Architectural Gray powder-paint finish
- Fully insulated blower compartment with convenient access panels
- Cabinet air leakage less than 2.0% at 1.0 inch H₂O when tested in accordance with ASHRAE standard 193
- Cabinet air leakage less than 1.4% at 0.5 inch H₂O when tested in accordance with ASHRAE standard 193
- AHRI Certified; ETL Listed

GPH14M Heat Pump — 14 SEER / 8.0 HSPF

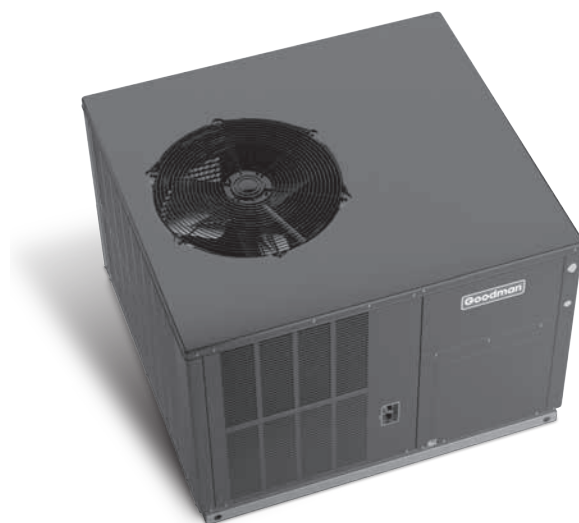
Model	Nominal Capacities			Electric Heat (kW)	SEER / EER	Voltage-Phase	Dimensions			dBs	Ship Weight (lbs)
	Cooling ¹	Heating ¹	CFM ²				W"	D"	H"		
GPH1424M41	2	2	850	5,8,10	14 / 11	208/230-1	47	51	34¾	76	380
GPH1430M41	2½	2½	1,050	5,8,10,15	14 / 11	208/230-1	47	51	34¾	76	390
GPH1436M41	3	3	1,200	5,8,10,15	14 / 11	208/230-1	47	51	34¾	81	400
GPH1442M41	3½	3½	1,300	5,8,10,15	14 / 11	208/230-1	47	51	34¾	80	410
GPH1448M41	4	4	1,600	5,8,10,15,20	14 / 11	208/230-1	47	51	42¾	79	485
GPH1460M41	5	5	1,850	5,8,10,15,20	14 / 11	208/230-1	47	51	42¾	80	495

¹ Tons ² BTU/h

Goodman Manufacturing Company, L.P. reserves the right to discontinue or change at any time specifications or designs without notice or without incurring obligations.



* Complete warranty details available from you local dealer or at www.goodmanmfg.com. To receive the 10-Year Parts Limited Warranty, online registration must be completed within 60 days of installation. Online registration is not required in California or Quebec.



Product Features

- High-efficiency compressor
- Multi-speed ECM indoor blower motor
- Convertible airflow: horizontal or downflow
- All-Aluminum evaporator coil
- Copper tube/aluminum fin condenser coils
- Liquid-line filter drier
- Electric heat kit available as a field-installed option
- Heavy-gauge galvanized-steel cabinet with attractive Architectural Gray powder-paint finish
- Cabinet air leakage less than 2.0% at 1.0 inch H₂O when tested in accordance with ASHRAE standard 193
- Cabinet air leakage less than 1.4% at 0.5 inch H₂O when tested in accordance with ASHRAE standard 193
- Fully insulated air-handling compartment with convenient access panels
- Louvered condenser coil protection
- AHRI Certified; ETL Listed

Split System
Air Conditioners

Split System
Heat Pumps

Gas
Furnaces

Packaged
Units

Air
Handlers

Coils

Controls &
Thermostats

Daikin
Ductless

GPH14H Heat Pump — Up to 14.5 SEER / Up to 8.0 HSPF

Model	Nominal Capacities			Electric Heat (kW)	SEER / EER	Voltage-Phase	Dimensions			dBs	Ship Weight (lbs)
	Cooling ¹	Heating ¹	CFM ²				W"	D"	H"		
GPH1424H41**	2	2	875	5, 8, 10	14.5 / 12.0	208/230-1	66	34	30	76	325
GPH1430H41**	2½	2½	1,050	5, 8, 10, 15	14.0 / 12.0	208/230-1	66	34	30	76	325
GPH1436H41**	3	3	1,200	5, 8, 10, 15	14.0 / 11.5	208/230-1	66	34	35	78	385
GPH1442H41**	3½	3½	1,300	5, 8, 10, 15, 20	14.0 / 12.0	208/230-1	66	34	35	78	385
GPH1448H41**	4	4	1,600	5, 8, 10, 15, 20	14.0 / 12.0	208/230-1	66	34	35	80	410
GPH1460H41**	5	5	1,700	5, 8, 10, 15, 20	14.0 / 12.0	208/230-1	66	34	35	80	415
GPH1460H41E*	5	5	1,700	5, 8, 10, 15, 20	14.0 / 11.5	208/230-1	66	34	35	80	415
GPH1460H41**	5	5	1,700	5, 8, 10, 15, 20	14.0 / 12.0	208/230-1	66	34	38¾	80	415

¹ Tons ² BTU/h

Goodman Manufacturing Company, L.P., reserves the right to discontinue or change at any time specifications or designs without notice or without incurring obligations.



* Complete warranty details available from you local dealer or at www.goodmanmfg.com. To receive the 10-Year Parts Limited Warranty, online registration must be completed within 60 days of installation. Online registration is not required in California or Quebec.



Product Features

- Energy-efficient compressor
- Multi-speed EEM indoor blower motor
- All-aluminum evaporator coil
- Copper tube/aluminum fin coil
- Totally enclosed, permanently lubricated condenser fan motor
- Quiet horizontal discharge
- Fully charged system
- Electric heat kit available as a field-installed option
- Heavy-gauge galvanized-steel cabinet with attractive Architectural Gray powder-paint finish
- Fully insulated blower compartment with convenient access panels
- Cabinet air leakage less than 2.0% at 1.0 inch H₂O when tested in accordance with ASHRAE standard 193
- Cabinet air leakage less than 1.4% at 0.5 inch H₂O when tested in accordance with ASHRAE standard 193
- Louvered condenser coil protection
- AHRI Certified; ETL Listed

GPG14M Gas/Electric Unit — 14 SEER / 81% AFUE

Model	Nominal Capacities			Voltage-Phase	Dimensions			dBs	Ship Weight (lbs)
	Cooling ¹	Heating ¹	CFM ²		W"	D"	H"		
GPG1424040M41A*	2	2	800	208/230-1	47	51	34%	78	435
GPG1424060M41A*	2	2	800	208/230-1	47	51	34%	78	439
GPG1430040M41A*	2½	2½	1,000	208/230-1	47	51	34%	78	438
GPG1430060M41A*	2½	2½	1,000	208/230-1	47	51	34%	78	442
GPG1436040M41A*	3	3	1,200	208/230-1	47	51	34%	78	470
GPG1436060M41A*	3	3	1,200	208/230-1	47	51	34%	78	475
GPG1436080M41A*	3	3	1,200	208/230-1	47	51	34%	78	480
GPG1442060M41A*	3½	3½	1,300	208/230-1	47	51	34%	78	515
GPG1442080M41A*	3½	3½	1,300	208/230-1	47	51	34%	78	520
GPG1448060M41A*	4	4	1,525	208/230-1	47	51	42%	80	540
GPG1448080M41A*	4	4	1,525	208/230-1	47	51	42%	80	545
GPG1448100M41A*	4	4	1,525	208/230-1	47	51	42%	80	550
GPG1460080M41A*	5	5	1,810	208/230-1	47	51	42%	78	555
GPG1460100M41A*	5	5	1,810	208/230-1	47	51	42%	78	560
GPG1460120M41A*	5	5	1,810	208/230-1	47	51	42%	78	565
GPG1461080M41A*	5	5	1,750	208/230-1	47	51	42%	80	555
GPG1461100M41A*	5	5	1,750	208/230-1	47	51	42%	80	560
GPG1461120M41A*	5	5	1,750	208/230-1	47	51	42%	80	565

¹ Tons ² BTU/h

Goodman Manufacturing Company, L.P. reserves the right to discontinue or change at any time specifications or designs without notice or without incurring obligations.



* Complete warranty details available from you local dealer or at www.goodmanmfg.com. To receive the 20-Year Heat Exchanger Limited Warranty and the 10-Year Parts Limited Warranty, online registration must be completed within 60 days of installation. Online registration is not required in California or Quebec.



Product Features

- Durable, corrosion-resistant aluminized-steel tubular heat exchanger
- Energy-efficient compressor
- Multi-speed ECM blower motor
- All-aluminum evaporator coil
- Aluminum tube / aluminum fin coil
- Power-assisted combustion
- Two-stage gas valve with easy conversion to propane
- Direct spark ignition system includes a microprocessor-based control for the entire ignition sequence
- High-quality UV-resistant powder-paint finish
- Cabinet air leakage less than 2.0% at 1.0 inch H₂O when tested in accordance with ASHRAE standard 193
- Cabinet air leakage less than 1.4% at 0.5 inch H₂O when tested in accordance with ASHRAE standard 193
- Horizontal or downflow application
- Fully insulated cabinet
- All models comply with California 40ng/J Low NOx standards
- AHRI Certified; ETL Listed

GPD14 Dual-Fuel Unit — Up to 14.5 SEER / 8.0 HSPF / 81% AFUE

Model	Nominal Capacities			Voltage-Phase-Hz	Dimensions			dBs	Ship Weight (lbs)
	Cooling ¹	Heating ¹	Gas Heat ²		W"	D"	H"		
GPD1424060M41A*	23,800	23,800	60,000	208/230-1-61	47	51	34¾	76	440
GPD1424070M41B*/C*	23,800	23,800	69,000	208/230-1-60	47	51	34¾	76	440
GPD1430080M41A*	28,000	28,000	80,000	208/230-1-61	47	51	34¾	76	440
GPD1430090M41B*/C*	28,000	28,000	92,000	208/230-1-60	47	51	34¾	76	440
GPD1436080M41A*	34,000	32,600	80,000	208/230-1-61	47	51	34¾	76	440
GPD1436090M41B*	35,200	32,600	92,000	208/230-1-60	47	51	34¾	76	460
GPD1437090M41A*	34,000	34,000	92,000	208/230-1-60	47	51	34¾	76	440
GPD1437090M41C*	34,000	34,000	92,000	208/230-1-60	47	51	34¾	76	440
GPD1442100M41A*	41,500	40,000	100,000	208/230-1-61	47	51	42¾	76	545
GPD1442115M41B*	41,500	40,000	115,000	208/230-1-60	47	51	42¾	76	545
GPD1448100M41A*	45,500	44,000	100,000	208/230-1-61	47	51	42¾	76	545
GPD1448115M41B*/C*	45,500	44,000	115,000	208/230-1-60	47	51	42¾	76	545

¹ Tons ² BTU/h

Goodman Manufacturing Company, L.P., reserves the right to discontinue or change at any time specifications or designs without notice or without incurring obligations.



* Complete warranty details available from you local dealer or at www.goodmanmfg.com. To receive the 20-Year Heat Exchanger Limited Warranty and the 10-Year Parts Limited Warranty, online registration must be completed within 60 days of installation. Online registration is not required in California or Quebec.



Product Features

- Combines cooling with heat pump and gas heating for optimal year-long performance
- High-efficiency scroll compressor
- Heavy-duty stainless-steel heat exchanger
- Multi-speed ECM indoor blower motor
- All-Aluminum evaporator coil
- Copper tube/aluminum fin coil
- Two-stage gas valve with easy conversion to propane using an accessory kit
- Power-assisted combustion
- Loss-of-charge protection
- Direct spark ignition system includes a microprocessor-based control for the entire ignition sequence
- All blower operation and all safety circuits complete with self-diagnostics
- Fully insulated heavy-gauge, zinc-coated steel cabinet with UV-resistant powder-paint finish
- Compressor sound blanket
- Louvered metal panel condenser coil protection
- Horizontal or downflow application
- Cabinet air leakage less than 2.0% at 1.0 inch H₂O when tested in accordance with ASHRAE standard 193
- Cabinet air leakage less than 1.4% at 0.5 inch H₂O when tested in accordance with ASHRAE standard 193
- All models comply with California 40ng/J Low NO_x emission standards
- AHRI Certified; ETL Listed




Air Handlers and Coils



Multi-Position, Variable-Speed Air Handler with SmartFrame™ Cabinet

Model	Cooling Capacity (BTU/h)	Voltage	Dimensions			Service Valve		Ship Weight (lbs)
			W"	D"	H"	Liquid	Suction	
AVPTC24B14*	24,000	208/230	17½	21	45	¾"	¾"	100
AVPTC30C14*	30,000	208/230	21	21	49	¾"	¾"	118
AVPTC36C14*	36,000	208/230	21	21	49	¾"	¾"	118
AVPTC42C14*	42,000	208/230	24½	21	49	¾"	¾"	155
AVPTC48C14*	48,000	208/230	21	21	49	¾"	¾"	125
AVPTC48D14*	48,000	208/230	24½	21	58	¾"	¾"	167
AVPTC60D14*	60,000	208/230	24½	21	58	¾"	¾"	167

Goodman Manufacturing Company, L.P. reserves the right to discontinue or change at any time specifications or designs without notice or without incurring obligations.

* Complete warranty details available from you local dealer or at www.goodmanmfg.com. To receive the 10-Year Parts Limited Warranty, online registration must be completed within 60 days of installation. Online registration is not required in California or Quebec.



Product Features

- ComfortNet™ Communicating System compatible
- 2- to 5-ton blower capacities
- All-aluminum evaporator coil
- Variable-speed ECM blower motor
- Improved humidity and comfort control
- Factory-installed filter rack
- 3 kW – 25 kW electric heater kits available
- Foil-faced insulation
- Multiple airflow positions
- Rigid SmartFrame™ cabinet
- AHRI certified; ETL listed



Multi-Position, Multi-Speed Air Handler with SmartFrame™ Cabinet

Model	Cooling (Tons)	Voltage	Unit Dimensions			Connection Size		Ship Weight (lbs)
			W"	D"	H"	Liquid"	Suction"	
ASPT25B14*	2	208/230	17½	21	45	⅜	¾	116
ASPT29B14*	2	208/230	17½	21	53⅞	⅜	⅞	129
ASPT37B14*	2½	208/230	17½	21	53⅞	⅜	⅞	129
ASPT37C14*	3	208/230	21	21	53⅞	⅜	⅞	144
ASPT47C14*	3½	208/230	21	21	53⅞	⅜	⅞	144
ASPT47D14*	4	208/230	24½	21	53⅞	⅜	⅞	155
ASPT49D14*	4	208/230	24½	21	58	⅜	⅞	167
ASPT59C14*	5	208/230	21	21	53⅞	⅜	⅞	144
ASPT61D14*	5	208/230	24½	21	58	⅜	⅞	167

¹ Tons *Airflow rate @.3 static

Goodman Manufacturing Company, L.P. reserves the right to discontinue or change at any time specifications or designs without notice or without incurring obligations.



* Complete warranty details available from you local dealer or at www.goodmanmfg.com. To receive the 10-Year Parts Limited Warranty, online registration must be completed within 60 days of installation. Online registration is not required in California or Quebec.

Product Features

- 2- to 5-ton blower capacities
- All-aluminum evaporator coil
- Multi-speed ECM blower motor
- Improved humidity and comfort control
- Factory-installed filter rack
- Field-installed electric heat from 3-25 kW
- Foil-faced insulation
- Multiple airflow positions
- Rigid SmartFrame™ cabinet
- AHRI certified; ETL listed

Split System
Air ConditionersSplit System
Heat PumpsGas
FurnacesPackaged
UnitsAir
Handlers

Coils

Controls &
ThermostatsDaikin
Ductless

Multi-Position, Multi-Speed Air Handler with SmartFrame™ Cabinet

Model	Nominal Cooling (Tons)	Voltage	Unit Dimensions			Connection Size		Ship Weight (lbs)
			W"	D"	H"	Liquid	Suction	
ARUF25B14*	2	208/230	17½	21	45	¾"	¾"	100
ARUF29B14*	2	208/230	17½	21	45	¾"	¾"	100
ARUF31B14*	2½	208/230	17½	21	53⅞	¾"	7/8"	110
ARUF37C14*	3	208/230	21	21	53⅞	¾"	7/8"	130
ARUF37D14*	3	208/230	24½	21	53⅞	¾"	7/8"	140
ARUF43C14*	3½	208/230	21	21	53⅞	¾"	7/8"	130
ARUF43D14*	3½	208/230	24½	21	53⅞	¾"	7/8"	145
ARUF47D14*	3½	208/230	24½	21	58	¾"	7/8"	150
ARUF49C14*	4	208/230	21	21	53⅞	¾"	7/8"	135
ARUF49D14*	4	208/230	24½	21	53⅞	¾"	7/8"	145
ARUF61D14*	5	208/230	24½	21	58	¾"	7/8"	155

¹ Tons *Airflow rate @.3 static

Goodman Manufacturing Company, L.P., reserves the right to discontinue or change at any time specifications or designs without notice or without incurring obligations.



* Complete warranty details available from you local dealer or at www.goodmanmfg.com. To receive the 10-Year Parts Limited Warranty, online registration must be completed within 60 days of installation. Online registration is not required in California or Quebec.

Product Features

- 2- to 5-ton blower capacities
- All-aluminum evaporator coil
- Direct-drive, multi-speed PSC blower motor
- Improved humidity and comfort control
- Factory-installed filter rack
- Field-installed electric heat from 3-25 kW
- Foil-faced insulation
- Multiple airflow positions
- Rigid SmartFrame™ cabinet
- AHRI certified; ETL listed



Modular Blowers

Model	Voltage-Phase	Dimensions			Ship Weight (lbs)
		W"	D"	H"	
MBVC1200AA-1	208/230-1	17½	21	26	67
MBVC1600AA-1	208/230-1	21	21	30	80
MBVC2000AA-1	208/230-1	24½	21	30	86

Goodman Manufacturing Company, L.P. reserves the right to discontinue, or change at any time, specifications or designs without notice or without incurring obligations.



* Complete warranty details available from you local dealer or at www.goodmanmfg.com. To receive the 10-Year Parts Limited Warranty, online registration must be completed within 60 days of installation. Online registration is not required in California or Quebec.

Product Features: MBVC

- ComfortNet™ Communicating System compatible
- Variable-speed ECM blower motor
- Built-in dehumidification feature
- 3 kW – 21 kW electric heat kits
- Blower section usable as electric heater
- Horizontal or vertical configuration capabilities
- Foil-faced insulation
- AHRI certified; ETL listed

Model	Voltage-Phase	Dimensions			Ship Weight (lbs)
		W"	D"	H"	
MBR0800AA-1	208/230-1	17½	21	26	62
MBR1200AA-1	208/230-1	17½	21	26	62
MBR1600AA-1	208/230-1	21	21	30	73
MBR2000AA-1	208/230-1	24½	21	30	84

Goodman Manufacturing Company, L.P. reserves the right to discontinue, or change at any time, specifications or designs without notice or without incurring obligations.



* Complete warranty details available from you local dealer or at www.goodmanmfg.com. To receive the 10-Year Parts Limited Warranty, online registration must be completed within 60 days of installation. Online registration is not required in California or Quebec.

Product Features: MBR

- Direct drive, multi-speed PSC blower motor
- 3 kW – 21 kW electric heat kits
- Blower section usable as electric heater
- Horizontal or vertical configuration capabilities
- Foil-faced insulation
- AHRI certified; ETL listed

Split System
Air ConditionersSplit System
Heat PumpsGas
FurnacesPackaged
UnitsAir
Handlers

Coils

Controls &
ThermostatsDaikin
Ductless

Model	Nominal Cooling (Tons)	Electric Heat (kW)	Voltage	Dimensions			Service Valve		Ship Weight (lbs)
				W"	D"	H"	Liquid	Suction	
AWUF180316*	1½	3	230/208	20¾ ₁₆	16½	36	¾"	⅝"	84
AWUF180516*	1½	5	230/208	20¾ ₁₆	16½	36	¾"	⅝"	84
AWUF180816*	1½	8	230/208	20¾ ₁₆	16½	36	¾"	⅝"	84
AWUF190316*	1½	3	230/208	20¾ ₁₆	16½	36	¾"	⅝"	84
AWUF190516*	1½	5	230/208	20¾ ₁₆	16½	36	¾"	⅝"	84
AWUF190816*	1½	8	230/208	20¾ ₁₆	16½	36	¾"	⅝"	84
AWUF240316*	2	3	230/208	20¾ ₁₆	16½	36	¾"	⅝"	84
AWUF240516*	2	5	230/208	20¾ ₁₆	16½	36	¾"	⅝"	84
AWUF240816*	2	8	230/208	20¾ ₁₆	16½	36	¾"	⅝"	84
AWUF241016*	2	10	230/208	20¾ ₁₆	16½	36	¾"	⅝"	84
AWUF250316*	2	3	230/208	20¾ ₁₆	16½	36	¾"	⅝"	84
AWUF250516*	2	5	230/208	20¾ ₁₆	16½	36	¾"	⅝"	84
AWUF250816*	2	8	230/208	20¾ ₁₆	16½	36	¾"	⅝"	84
AWUF251016*	2	10	230/208	20¾ ₁₆	16½	36	¾"	⅝"	84
AWUF300316*	2½	3	230/208	24	21	36	¾"	¾"	93
AWUF300516*	2½	5	230/208	24	21	36	¾"	¾"	109
AWUF300816*	2½	8	230/208	24	21	36	¾"	¾"	109
AWUF301016*	2½	10	230/208	24	21	36	¾"	¾"	109
AWUF310516*	2½	5	230/208	24	21	36	¾"	¾"	109
AWUF310816*	2½	8	230/208	24	21	36	¾"	¾"	109
AWUF321016*	2½	10	230/208	24	21	36	¾"	¾"	109
AWUF360516*	3	5	230/208	24	21	36	¾"	¾"	96
AWUF360816*	3	8	230/208	24	21	36	¾"	¾"	96
AWUF361016*	3	10	230/208	24	21	36	¾"	¾"	96
AWUF370516*	3	5	230/208	24	21	36	¾"	¾"	96
AWUF370816*	3	8	230/208	24	21	36	¾"	¾"	96
AWUF371016*	3	10	230/208	24	21	36	¾"	¾"	96

Goodman Manufacturing Company, L.P., reserves the right to discontinue or change at any time specifications or designs without notice or without incurring obligations.



* Complete warranty details available from you local dealer or at www.goodmanmfg.com. To receive the 10-Year Parts Limited Warranty, online registration must be completed within 60 days of installation. Online registration is not required in California or Quebec.



Product Features

- 1.5- to 5-ton blower capacities
- All-aluminum evaporator coil
- Direct-drive, multi-speed motor allows air volume variation for heating/cooling
 - Multi-speed ECM: AWUF19, 25, 31, 32, 37
 - Multi-speed PSC motor: AWUF18, 24, 30, 36
- Factory-installed filter rack
- Field-installed electric heat from 3-25 kW
- Foil-faced insulation
- Multiple airflow positions
- AHRI certified; ETL listed

Model	Cooling Capacity (tons)	Airflow (CFM) High/Low	Electric Heat (kW)	Voltage (VAC)	Dimensions			Service Valve		Ship Weight (lbs)
					W"	D"	H"	Liquid	Suction	
ACNF180016*	1½	660/ 595	0	208/230	37¾	21	10	¾	¾	59
ACNF180516*	1½	660/ 595	5	208/230	37¾	21	10	¾	¾	59
ACNF180616*	1½	660/ 595	6	208/230	37¾	21	10	¾	¾	59
ACNF180816*	1½	660/ 595	7	208/230	37¾	21	10	¾	¾	59
ACNF240016*	2	880/ 840	0	208/230	43¾	21	10	¾	¾	69
ACNF240516*	2	880/ 840	5	208/230	43¾	21	10	¾	¾	69
ACNF240616*	2	880/ 840	6	208/230	43¾	21	10	¾	¾	69
ACNF240816*	2	880/ 840	7	208/230	43¾	21	10	¾	¾	69
ACNF241016*	2	880/ 840	10	208/230	43¾	21	10	¾	¾	69
ACNF250016*	2	912/ 610	0	208/230	43¾	21	10	¾	¾	69
ACNF250516*	2	912/ 610	5	208/230	43¾	21	10	¾	¾	69
ACNF250616*	2	912/ 610	6	208/230	43¾	21	10	¾	¾	69
ACNF250816*	2	912/ 610	7	208/230	43¾	21	10	¾	¾	69
ACNF251016*	2	912/ 610	10	208/230	43¾	21	10	¾	¾	69
ACNF300016*	2½	1005/ 890	0	208/230	49¾	21	10	¾	¾	79
ACNF300516*	2½	1005/ 890	5	208/230	49¾	21	10	¾	¾	79
ACNF300616*	2½	1005/ 890	6	208/230	49¾	21	10	¾	¾	79
ACNF300816*	2½	1005/ 890	7	208/230	49¾	21	10	¾	¾	79
ACNF301016*	2½	1005/ 890	10	208/230	49¾	21	10	¾	¾	79
ACNF310016*	2½	928/ 695	0	208/230	49¾	21	10	¾	¾	79
ACNF310516*	2½	928/ 695	5	208/230	49¾	21	10	¾	¾	79
ACNF310616*	2½	928/ 695	6	208/230	49¾	21	10	¾	¾	79
ACNF310816*	2½	928/ 695	7	208/230	49¾	21	10	¾	¾	79
ACNF311016*	2½	928/ 695	10	208/230	49¾	21	10	¾	¾	79

Goodman Manufacturing Company, L.P., reserves the right to discontinue or change at any time specifications or designs without notice or without incurring obligations.



* Complete warranty details available from you local dealer or at www.goodmanmfg.com. To receive the 10-Year Parts Limited Warranty, online registration must be completed within 60 days of installation. Online registration is not required in California or Quebec.



Product Features

- 1.5- to 5-ton blower capacities
- All-aluminum evaporator coil
- Direct-drive, multi-speed motor:
EEM motor — ACNF25, ACNF31
PSC motor — ACNF18, ACNF24, ACNF30
- Nickel chromium heating elements of 5, 6, 8 and 10 kW
- Multiple airflow positions
- AHRI certified; ETL listed

CAPT — Cased Coil with TXV Option

Model	Cabinet Dimensions			Nominal Tons	Connection		Ship Weight (lbs)
	W	D	H		Liquid	Suction	
CAPT3131B4*	17½"	21"	22"	2½	¾"	¾"	46
CAPT3131C4*	21"	21"	22"	2½	¾"	¾"	50
CAPT3743C4*	21"	21"	30"	3-3½	¾"	7/8"	63
CAPT3743D4*	24½"	21"	30"	3-3½	¾"	7/8"	75
CAPT4961C4*	21"	21"	30"	4-5	¾"	7/8"	73
CAPT4961D4*	24½"	21"	30"	4-5	¾"	7/8"	76

Goodman Company, L.P. reserves the right to discontinue, or change at any time, specifications or designs without notice or without incurring obligations.



* Complete warranty details available from you local dealer or at www.goodmanmfg.com. To receive the 10-Year Parts Limited Warranty, online registration must be completed within 60 days of installation. Online registration is not required in California or Quebec.



Product Features

- Upflow/Downflow configuration
- All-aluminum coil receives finished pressure testing for leaks
- Tube and fin coil construction offers heat transfer efficiency
- Grooved aluminum tubing offers increased surface area for better heat transfer
- Helium pressure-tested during construction
- Aluminum-lanced sine fin design for optimum heat transfer
- Thick-walled aluminum tubing provides extra strength
- Copper coil stud connects copper liquid suction lines
- AHRI certified; ETL listed

Model	Dimensions			Nominal Tons	Connection		Ship Weight (lbs)
	W"	D"	H"		Liquid"	Suction"	
CAPF1824A6	14	21	18	1½-2	¾"	¾"	32
CAPF1824B6	17½	21	18	1½-2	¾"	¾"	35
CAPF1824C6	21	21	22	1½-2	¾"	¾"	42
CAPF3030A6	14	21	22	2½	¾"	¾"	41
CAPF3030B6	17½	21	22	2½	¾"	¾"	43
CAPF3030C6	21	21	22	2½	¾"	¾"	44
CAPF3030D6	24½	21	22	2½	¾"	¾"	52
CAPF3131B6	17½	21	22	2½	¾"	¾"	46
CAPF3131C6	21	21	22	2½	¾"	¾"	50
CAPF3137B6	17½	21	30	2½-3	¾"	¾"	53
CAPF3636A6	14	21	22	3	¾"	¾"	40
CAPF3636B6	17½	21	22	3	¾"	¾"	44
CAPF3636C6	21	21	22	3	¾"	¾"	53
CAPF3636D6	24½	21	22	3	¾"	¾"	51
CAPF3642C6	21	21	22	3-3½	¾"	¾"	49
CAPF3642D6	24½	21	22	3-3½	¾"	¾"	52
CAPF3743C6	21	21	30	3-3½	¾"	¾"	63
CAPF3743D6	24½	21	30	3-3½	¾"	¾"	75
CAPF4860C6	21	21	30	4-5	¾"	¾"	65
CAPF4860D6	24½	21	30	4-5	¾"	¾"	68
CAPF4961C6	21	21	30	4-5	¾"	¾"	73
CAPF4961D6	24½	21	30	4-5	¾"	¾"	76

Goodman Manufacturing Company, L.P. reserves the right to discontinue, or change at any time, specifications or designs without notice or without incurring obligations.



* Complete warranty details available from you local dealer or at www.goodmanmfg.com. To receive the 10-Year Parts Limited Warranty, online registration must be completed within 60 days of installation. Online registration is not required in California or Quebec.



Product Features

- Upflow/Downflow configuration
- All-aluminum coil receives finished pressure testing for leaks
- Tube and fin coil construction offers heat transfer efficiency
- Grooved aluminum tubing offers increased surface area for better heat transfer
- Helium pressure-tested during construction
- Aluminum-lanced sine fin design for optimum heat transfer
- Thick-walled aluminum tubing provides extra strength
- Copper coil stud connects copper liquid suction lines
- AHRI certified; ETL listed

CAUF — Uncased Upflow/Downflow

Model	Nominal Tons	Dimensions			Connection		Piston Size	Ship Weight (lbs.)
		W"	D"	H"	Liquid	Suction		
CAUF1824A6	1½-2	13"	20⅝"	16¼"	⅜"	¾"	.059	18
CAUF1824B6	1½-2	16½"	20⅝"	16⅝"	⅜"	¾"	.059	23
CAUF1824C6	1½-2	20"	20⅝"	16¾"	⅜"	¾"	.059	27
CAUF3030A6	2½	13"	20⅝"	20⅞"	⅜"	¾"	.065	25
CAUF3030B6	2½	16½"	20⅝"	18¾"	⅜"	¾"	.065	22
CAUF3030C6	2½	20"	20⅝"	17⅞"	⅜"	¾"	.065	25
CAUF3030D6	2½	23"	20⅝"	17⅞"	⅜"	¾"	.065	32
CAUF3131B6	2½	16½"	20⅝"	20⅞"	⅜"	¾"	.068	27
CAUF3137B6	2½-3	16½"	20⅝"	27"	⅜"	¾"	.071	53
CAUF3131C6	2½	20"	20⅝"	20"	⅜"	¾"	.068	31
CAUF3636A6	3	13"	20⅝"	19½"	⅜"	¾"	.071	30
CAUF3636B6	3	16½"	20⅝"	19¾"	⅜"	¾"	.071	25
CAUF3636C6	3	20"	20⅝"	19½"	⅜"	¾"	.071	28
CAUF3636D6	3	23"	20⅝"	19¾"	⅜"	¾"	.071	36
CAUF3642C6	3-3½	20"	20⅝"	19"	⅜"	¾"	.078	29
CAUF3642D6	3-3½	23"	20⅝"	19¾"	⅜"	¾"	.078	34
CAUF3743C6	3-3½	20"	20⅝"	28⅞"	⅜"	⅞"	.078	46
CAUF3743D6	3-3½	23"	20⅝"	27¾"	⅜"	⅞"	.078	43
CAUF4860C6	4-5	20"	20⅝"	28"	⅜"	⅞"	.093	48
CAUF4860D6	4-5	23"	20⅝"	28"	⅜"	⅞"	.093	39
CAUF4961C6	4-5	20"	20⅝"	28"	⅜"	⅞"	.093	54
CAUF4961D6	4-5	23"	20⅝"	27"	⅜"	⅞"	.093	59

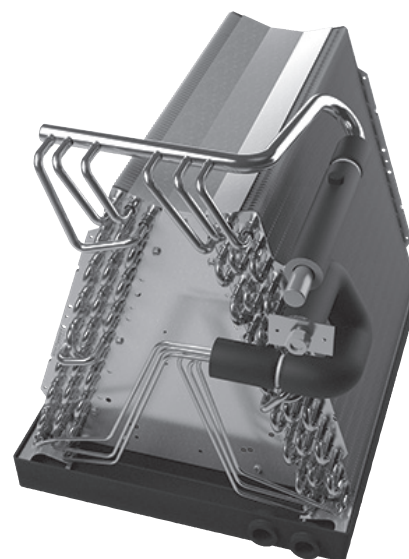
Goodman Manufacturing Company, L.P. reserves the right to discontinue, or change at any time, specifications or designs without notice or without incurring obligations.



* Complete warranty details available from you local dealer or at www.goodmanmfg.com. To receive the 10-Year Parts Limited Warranty, online registration must be completed within 60 days of installation. Online registration is not required in California or Quebec.

Product Features

- Upflow/Downflow configuration
- All-aluminum coil receives finished pressure testing for leaks
- Tube and fin coil construction offers heat transfer efficiency
- Grooved aluminum tubing offers increased surface area for better heat transfer
- Helium pressure-tested during construction
- Aluminum-lanced sine fin design for optimum heat transfer
- Thick-walled aluminum tubing provides extra strength
- Copper coil stud connects copper liquid suction lines
- AHRI certified; ETL listed



Model	Cabinet Dimensions			Plenum Opening		Nominal Tons	Connection		Ship Weight (lbs)
	D	W	H	D	H		Liquid	Suction	
CHPF1824A6*	21½"	26"	14"	19"	13"	1½ to 2	¾"	¾"	36
CHPF2430B6*	21½"	26"	17½"	19"	16½"	2 to 2½	¾"	¾"	55
CHPF3636B6*	21½"	26"	17½"	19"	16½"	3	¾"	¾"	50
CHPF3642C6*	21½"	26"	21"	19"	20"	3 to 3½	¾"	¾"	63
CHPF3642D6*	21½"	26"	24½"	19"	23½"	3 to 3½	¾"	7⁄8"	66
CHPF3743C6*	21½"	26"	21"	19"	20"	3 to 3½	¾"	7⁄8"	63
CHPF3743D6*	21½"	26"	24½"	19"	23½"	3 to 3½	¾"	7⁄8"	63
CHPF4860D6*	21½"	26"	24½"	19"	23½"	4 to 5	¾"	7⁄8"	77

Goodman Manufacturing Company, L.P. reserves the right to discontinue, or change at any time, specifications or designs without notice or without incurring obligations.



* Complete warranty details available from you local dealer or at www.goodmanmfg.com. To receive the 10-Year Parts Limited Warranty, online registration must be completed within 60 days of installation. Online registration is not required in California or Quebec.



Product Features

- Horizontal configuration
- All-aluminum coil receives finished pressure testing for leaks
- Tube and fin coil construction offers heat transfer efficiency
- Grooved aluminum tubing offers increased surface area for better heat transfer
- Helium pressure-tested during construction
- Aluminum-lanced sine fin design for optimum heat transfer
- Thick-walled aluminum tubing provides extra strength
- Copper coil stud connects copper liquid suction lines
- AHRI certified; ETL listed

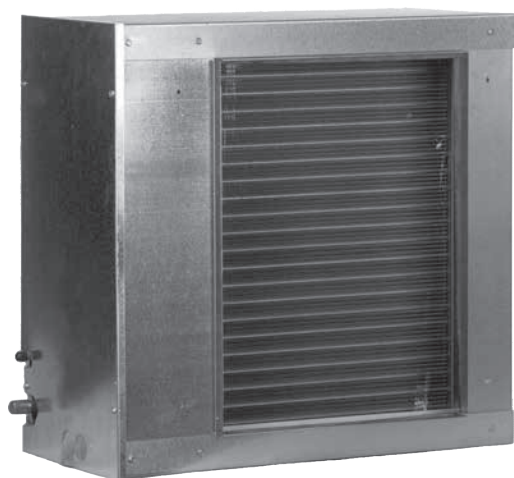
CSCF — Horizontal Slab Evaporator Indoor Coil

Model	Cabinet Dimensions			Plenum Opening		Capacity (Tons)	Connection Size		Ship Weight (lbs)
	D	W	H	D	H		Liquid	Suction	
CSCF1824N6*	25½"	12"	25"	16"	21"	1½-2	¾"	¾"	43
CSCF3036N6*	33½"	12"	25"	24"	21"	2½-3	¾"	7⁄8"	52.5
CSCF3642N6*	39½"	12"	25"	30"	21"	3-3½	¾"	7⁄8"	43
CSCF4860N6*	39½"	12"	25"	30"	21"	4-5	¾"	7⁄8"	60

Goodman Manufacturing Company, L.P. reserves the right to discontinue or change at any time specifications or designs without notice or without incurring obligations.



* Complete warranty details available from you local dealer or at www.goodmanmfg.com. To receive the 10-Year Parts Limited Warranty, online registration must be completed within 60 days of installation. Online registration is not required in California or Quebec.



Product Features

- Horizontal configuration
- All-aluminum coil receives finished pressure testing for leaks
- Tube and fin coil construction offers heat transfer efficiency
- Grooved aluminum tubing offers increased surface area for better heat transfer
- Helium pressure-tested during construction
- Aluminum-lanced sine fin design for optimum heat transfer
- Thick-walled aluminum tubing provides extra strength
- Copper coil stud connects copper liquid suction lines
- AHRI certified; ETL listed

Controls and Thermostats



The ComfortNet™ brand CTK04 touchscreen digital control works with Goodman® brand ComfortNet-ready heating and cooling systems in both residential and commercial applications.

Product Features

- Advanced modulation control
- Adjustable heat pump balance point
- Adjustable auxiliary heat lock-out
- Adjustable continuous four-speed fan
- Full color display
- Commercial / residential selection option
- On-board dehumidification capability
- Humidification control
- Humidifier type selection (with Honeywell TrueSTEAM)
- Wireless humidification option (with RedLINK outdoor sensor)
- Window frost / condensation protection (with RedLINK outdoor sensor)
- Southern dehumidification control
- Multiple commercial dehumidification options
- Indoor temperature averaging (with RedLINK indoor sensor(s))
- Device naming option
- Outdoor temperature display
- Outdoor humidity display (with RedLINK outdoor sensor)
- Wireless accessory capability
- Multi-lingual (English, French, Spanish)
- Air filter maintenance reminder
- UV lamp maintenance reminder
- Humidifier pad maintenance reminder
- Electronic air cleaner maintenance reminder
- Continuous backlight
- Adjustable backlight & contrast
- Temperature display adjustment
- Humidity display adjustment
- Temperature display °F or °C
- Max. heat & min. cool set-point temperatures
- Max./min. temperature / humidity alerts
- User interaction log (historical)
- Advanced staging control
- Heat and cool cycle rate adjustable
- Energy management recovery
- Internet access
- Home-screen theme options
- Customizable home screen
- Keypad lock-out options
- Auto-display dimming option
- Dealer information capability
- USB upload dealer information & set-up



* Complete warranty details available from your local dealer or at www.goodmanmfg.com. To receive the 10-Year Control Limited Warranty, the control must be installed in conjunction with a new furnace or air handler containing a communicating system that is compatible with the control and, if that furnace/air handler is a Goodman® or Amana® brand unit, that furnace/air handler must have been registered online within 60 days of installation of the furnace/air handler. Failure by Quebec or California residents to have registered a Goodman or Amana brand furnace/air handler does not diminish their warranty rights.

ComfortNet™ Family of Products

- Air Conditioners: DSXC18, DSXC16
- Heat Pumps: DSZC18, DSZC16
- Gas Furnaces: GMVM96, GCV86, GMVC95, GVC95, GMVC8
- Air Handlers: AVPVC, AVPTC, MBVC



Product Features

- Built-in WiFi with downloadable remote control apps
- Customizable wallpaper and slide show
- Built-in nature and holiday wallpaper themes
- Customizable service alerts
- “Simple as you want” operation with easy-to-read display
- TouchScreen assistant for fast and easy programming
- SD memory card for easy importing and exporting of thermostat data, including copying data between thermostats
- At-a-glance screen lets users see temperature and heating/cooling status
- Programmable fan and night-time dimmer
- 7-Day programmable scheduler
- Switchable programmable or non-programmable
- Up to 4 heat & 2 cool stages
- Automatic daylight savings adjustments
- 7-Day energy usage graph
- Passcode security for screen lock and set-point limits
- Multiple languages: English, Spanish, and French
- Gas/electric or heat pump control
- Universal compatibility including dual fuel

Split System
Air Conditioners

Split System
Heat Pumps

Gas
Furnaces

Packaged
Units

Air
Handlers

Coils

Controls &
Thermostats

Daikin
Ductless





DAIKIN Ductless Systems

15 Series — 15 SEER / Up to 12.2 EER / 8.2 HSPF

High-Efficiency Wall-Mounted Units



Daikin 15 Series wall-mounted units use the latest technology combined with advanced engineering and design to make them ideal for any room in the house. Blending easily with the interior décor and providing quiet operation, these units provide optimal climate control throughout the year.

DUCTLESS Single Split Wall-Mounted Heat Pump and Cooling-Only Systems - Variable Speed

Designed for Comfort for Life, Daikin Series units include advanced features to ensure a comfortable experience every moment. From the wide angle louver design to the auto-swing and comfortable mode controller settings, effective heating and cooling is ensured throughout the space. These Daikin brand heat pumps and air conditioners are designed to blend in discreetly with any home design and are ideal for single rooms, enhancements and additions up to 1,500 square feet.**

** Equipment selection should always be based on detailed load calculation performed by a qualified technician.

Comfort Features

- **Energy Efficient** – 15 SEER, 8.2 HSPF and up to 12.2 EER for ultra-efficient cooling and heating operation and reduced operating costs compared to conventional lower-efficiency systems. Heat Pump and Air Conditioning models available with capacity ranges from: .75–2 tons, sizes: 09, 12, 18, 24k BTU/h.
- **Undisturbed Comfort** – Indoor and outdoor units offer exceptionally low sound levels as low as 49 dbA outdoors and as low as 19 dbA indoors.
- **Advanced Filtration** – Long life, washable filters remove a wide range of airborne particles and decompose odors, such as those from cooking, painting, smoking and other sources.
- **Wireless Remote Control** – Hand held remote for automatic airflow adjustment eliminates the need for manual duct adjustments.

Standard Features

- Inverter Compressor
- Cooling Range 50°–115° F
- Heating Range 5°–75° F
- Indoor Sound Pressure as Low as 19 dB(A)
- Outdoor Sound Pressure as Low as 46 dB(A)
- Washable Air Filter
- Program Dry Function
- Econo Mode
- Powerful Operation Mode
- 208/230/1 Power Supply
- Wireless Remote Controller
- Outdoor Unit Quiet Operation
- Auto Changeover (Heat Pump Only)
- Auto Fan Speed Control
- Self Diagnostics with Digital Display
- Auto Restart after Power Failure
- Anti-Corrosion Heat Exchanger Treatment
- Max Piping (09/12 MBH): 66' L, 49' H
- Max Piping (18/24 MBH): 98' L, 66' H
- Precharged for up to 33 ft of Liquid Line

Ideal Solution For

- Renovations, remodeling and new construction
- Sun rooms, basements, attics, garages, hot or cold rooms, and more

Comfortable Limited Warranty* Protection



*Complete warranty details available from your local dealer or at www.daikincomfort.com. To receive the 10-Year Parts Limited Warranty, online registration must be completed within 60 days of installation. Online registration is not required in California or Quebec.

High-Efficiency Wall-Mounted Units

15 Series System Performance					
Nominal Capacity Class		9,000	12,000	18,000	24,000
Cooling Capacity (Rated)	BTU/h	9,000	12,000	17,100	22,000
Cooling Capacity (Min–Max)	BTU/h	4,400–10,200	4,400–13,000	5,100–18,000	5,100–23,000
Heating Capacity (Rated)*	BTU/h	9,000	12,000	18,000	22,000
Heating Capacity (Min–Max)*	BTU/h	4,400–10,000	4,400–14,000	5,100–19,100	5,100–25,400
SEER		15	15	15	15
COP		3.9	3.9	3.8	3.6
EER		10.4	10.5	12.2	9.2
HSPF*		8.2	8.2	8.2	8.2
Electrical Data					
Power Supply	V/Ph/Hz	208–230/1/60	208–230/1/60	208–230/1/60	208–230/1/60
Minimum Circuit Amps	A	7.9 Cool/10.1 Heat	8.6 Cool/10.1 Heat	9.5 Cool/13.3 Heat	18.3
Maximum Overcurrent Protection	A	15	15	15	20
Power Consumption- Cooling	kW	0.9	1.1	1.4	2.4
Power Consumption- Heating*	kW	0.7	0.9	1.4	1.8
Indoor Wall-Mounted Units					
Indoor Model Name	Cooling Only Heat Pump	FTKN09NMVJU	FTKN12NMVJU	FTKN18NMVJU	FTKN24NMVJU
		FTXN09NMVJU	FTXN12NMVJU	FTXN18NMVJU	FTXN24NMVJU
Moisture Removal	Q/hr	1.3	1.8	4.1	4.8
Airflow-Wet (H/M/L/SL)	CFM	403/286/219/145	424/300/247/141	713/579/455/417	713/579/491/417
Airflow-Dry (H/M/L/SL)*	CFM	406/318/247/215	413/321/247/212	660/568/470/420	745/604/470/420
Sound Pressure- Cooling (H/M/L/SL)	dB(A)	43/35/27/19	44/36/30/19	48/44/38/33	51/45/39/34
Sound Pressure- Heating (H/M/L/SL)*	dB(A)	43/35/28/25	44/36/29/26	48/42/37/33	41/43/37/34
Piping	Liquid (O.D.)	in.	Ø 1/4	Ø 1/4	Ø 1/4
Connections	Gas (O.D.)	in.	Ø ¾	Ø ¾	Ø 5/8
	Condensate Drain	in.	Ø 5/8	Ø 11/16	Ø 11/16
Dimensions (H x W x D)	in.	11½ X 30¾ X 8¾		11½ X 39 x 10¾	
Net Weight	lbs.	18	18	26	26
Outdoor Units					
Indoor Model Name	Cooling Only Heat Pump	RKN09NMVJU	RKN12NMVJU	RKN18NMVJU	RKN24NMVJU
		RXN09NMVJU	RXN12NMVJU	RXN18NMVJU	RXN24NMVJU
Sound Pressure Level: Cooling/Heating*	dB(A)	46/48	49/49	54/54	55/55
Operating Range- Cooling	°F DB	50° – 115°	50° – 115°	50° – 115°	50° – 115°
Operating Range- Heating*	°F DB	5° – 75°	5° – 75°	5° – 75°	5° – 75°
Max. Piping Length	ft.	49	49	98.4	98.4
Max. Piping Height	ft.	39	39	65.6	65.6
Dimensions (H x W x D)	in.	21½ X 26½ X 11½		29 x 34¾ X 12¾	
Net Weight	lbs.	53	53	97	97

* Applicable to heat pump models only ** Cutting a jumper is required. Refer to installation manual.

Split System
Air Conditioners

Split System
Heat Pumps

Gas
Furnaces

Packaged
Units

Air
Handlers

Coils

Controls &
Thermostats

Daikin
Ductless

19 Series — 19 SEER / Up to 12.5 EER / 9 HSPF

High-Efficiency Wall-Mounted Units



Daikin 19 Series wall-mounted units use the latest technology combined with advanced engineering and design to make them ideal for any room in the house. Blending easily with the interior décor and providing quiet operation, these units provide optimal climate control throughout the year.

DUCTLESS Single Split Wall-Mounted Heat Pump and Cooling-Only Systems - Variable Speed

Designed for Comfort for Life, Daikin Series units include advanced features to ensure a comfortable experience every moment. From the wide angle louver design to the auto-swing and comfortable mode controller settings, effective heating and cooling is ensured throughout the space. These Daikin brand heat pumps and air conditioners are designed to blend in discreetly with any home design and are ideal for single rooms, enhancements and additions up to 1,500 square feet. **

** Equipment selection should always be based on detailed load calculation performed by a qualified technician.

Comfort Features

- Energy Efficient – Up to 19 SEER, 9.0 HSPF, up to 12.5 EER for ultra-efficient cooling and heating operation and reduced operating costs compared to conventional lower-efficiency systems. Heat Pump and Cooling Only models available. Capacity ranges: .75–2 tons, sizes: 09, 12, 18, 24k BTU/h
- Undisturbed Comfort – Indoor and outdoor units offer exceptionally low sound levels as low as 49 dbA outdoors and as low as 19 dbA indoors.
- Advanced Filtration – Long life, washable filters remove a wide range of airborne particles and decompose odors such as those from painting, cooking, smoking and other sources.
- Wireless Remote Control – Hand held remote with back-lit LCD display for automatic airflow adjustment eliminates the need for manual duct adjustments.

Standard Features

- Inverter Compressor
- Cooling Range 0°–115° F (w/ Wind Baffle)
- Heating Range -4°–75° F (w/ Drain Pan Heater)
- Washable Air Filter
- Air Purifying Filter Set
- Program Dry Function
- Econo Mode
- Powerful Operation Mode
- 208/230/1 Power Supply
- Backlit LCD Wireless Remote Controller
- Outdoor Unit Quiet Operation
- Auto Changeover (Heat Pump Only)
- Auto Fan Speed Control
- Self Diagnostics with Digital Display
- Auto Restart after Power Failure
- Anti-Corrosion Heat Exchanger Treatment
- Max Piping (09/12 MBH): 66' L, 49' H
- Max Piping (18/24 MBH): 98' L, 66' H
- Precharged for up to 33 ft of Liquid Line

Ideal Solution For

- Renovations, remodeling and new construction
- Sun rooms, basements, attics, garages, hot or cold rooms, and more



Comfortable Limited Warranty* Protection



*Complete warranty details available from your local dealer or at www.daikincomfort.com. To receive the 12-Year Parts Limited Warranty, online registration must be completed within 60 days of installation. Online registration is not required in California or Quebec.

High-Efficiency Wall-Mounted Units

19 Series System Performance					
Nominal Capacity Class		9,000	12,000	18,000	24,000
Cooling Capacity (Rated)	BTU/h	9,000	10,900	18,000	21,200
Cooling Capacity (Min–Max)	BTU/h	4,400–10,200	4,400–13,300	5,500–20,000	5,500–24,000
Heating Capacity (Rated)*	BTU/h	10,000	13,500	21,600	24,000
Heating Capacity (Min–Max)*	BTU/h	4,400–13,000	4,400–16,400	5,500–24,000	5,800–27,600
SEER		19	19	18	18
COP		4.1	3.8	3.6	3.5
EER		12.5	12.5	12.5	12.5
HSPF*		9	9	9	9
Electrical Data					
Power Supply	V/Ph/Hz	208-230/1/60	208-230/1/60	208-230/1/60	208-230/1/60
Minimum Circuit Amps	A	12.1	12.2	18.3	18.3
Maximum Overcurrent Protection	A	15	15	20	20
Power Consumption- Cooling	kW	0.7	0.9	1.4	1.7
Power Consumption- Heating*	kW	0.7	1.0	1.8	2.0
Indoor Wall-Mounted Units					
Indoor Model Name	Cooling Only	FTK09NMVJU	FTK12NMVJU	FTK18NMVJU	FTK24NMVJU
	Heat Pump	FTX09NMVJU	FTX12NMVJU	FTX18NMVJU	FTX24NMVJU
Moisture Removal	Q/hr	1.3	1.8	4.1	4.8
Airflow-Wet (H/M/L/SL)	CFM	417/297/244/141	434/311/247/145	713/579/448/403	713/579/512/403
Airflow-Dry (H/M/L/SL)*	CFM	403/328/251/215	413/321/258/219	745/604/470/420	745/604/470/420
Sound Pressure- Cooling (H/M/L/SL)	dB(A)	43/36/30/19	45/37/30/19	49/44/38/33	54/5/39/34
Sound Pressure- Heating (H/M/L/SL)*	dB(A)	43/36/29/25	45/37/30/26	49/42/37/33	54/3/37/34
Piping	Liquid (O.D.)	in.	Ø 1/4	Ø 1/4	Ø 1/4
Connections	Gas (O.D.)	in.	Ø 3/8	Ø 1/2	Ø 5/8
	Condensate Drain	in.	Ø 5/8	Ø 11/16	Ø 11/16
Dimensions (H x W x D)	in.	11¼ X 30¾ X 8¾		11¾ X 39 X 10¾	
Net Weight	lbs.	18	18	26	26
Outdoor Units					
Model Name	Cooling Only	RK09NMVJU	RK12NMVJU	RK18NMVJU	RK24NMVJU
	Heat Pump	RX09NMVJU	RX12NMVJU	RX18NMVJU	RX24NMVJU
Sound Pressure Level- Cooling/Heating*	dB(A)	46/48	49/49	54/54	55/55
Operating Range- Cooling	°F DB	50°– 115°	50°– 115°	50°– 115°	50°– 115°
Operating Range- Low Ambient Cooling**	°F DB	14°– 115°	14°– 115°	14°– 115°	14°– 115°
Operating Range- Cooling with Optional Wind Baffle**	°F DB	0°– 115°	0°– 115°	0°– 115°	0°– 115°
Operating Range- Heating*	°F DB	5°– 75°	5°– 75°	5°– 75°	5°– 75°
Operating Range- Heating with Optional Drain Pan Heater	°F DB	-4°– 75°	-4°– 75°	-4°– 75°	-4°– 75°
Max. Piping Length	ft.	65.6	65.6	98.4	98.4
Max. Piping Height	ft.	49.2	49.2	65.6	65.6
Dimensions (H x W x D)	in.	21¾ X 26½ X 11¾		29 X 34¾ X 12¾	
Net Weight	lbs.	55	60	97	108

* Applicable to heat pump models only ** Cutting a jumper is required. Refer to installation manual.



ENERGY STAR® and the ENERGY STAR mark are registered trademarks owned by the U.S. Environmental Protection Agency. ENERGY STAR products are third-party certified by an EPA-recognized Certification Body. Products that earn the ENERGY STAR prevent greenhouse gas emissions by meeting strict energy efficiency guidelines set by the U.S. Environmental Protection Agency.

Proper sizing and installation of equipment is critical to achieve optimal performance. Split system air conditioners and heat pumps must be matched with appropriate coil components to meet ENERGY STAR criteria. Ask your contractor for details or visit www.energystar.gov.

LV Series — Up to 24.5 SEER/Up to 12.5 HSPF

Wall-Mounted Units



Comfort Features

- Energy Efficient – Up to 24.5 SEER, 12.5 HSPF and 15.1 EER
- Offers ultra-efficient cooling and heating operation and exceptional savings on utility bills compared to conventional lower-efficiency systems.
- Advanced Filtration – Long life, washable filters remove a wide range of airborne particles and decompose odors, such as those from cooking, painting, smoking and other sources.
- Wireless Control – Hand held remote features an LCD screen with back-lit display, Econo Mode, Powerful Mode, and more.
- Intelligent Eye Technology – Detects movement and automatically changes to an energy saving mode when movement is not detected for over 20 minutes.

Standard Features

- Inverter Compressor
- 208/230/1 Power Supply
- Cooling Operating Range 0°–115° F (With Wind Baffle)
- Heating Operating Range 0°–77° F (w/ Drain Pan Heater)
- Precharged for up to 32 ft of Liquid Line
- Indoor Sound Pressure as Low as 26 dB(A)
- Outdoor Sound Pressures as Low as 48 dB(A)
- Program Dry Function
- Powerful Operation
- Intelligent Eye Occupancy Sensor[†]
- Backlit LCD Wireless Remote Controller
- 3-D Airflow[†]
- Weekly Timer[†]
- Outdoor Unit Quiet Operation
- Auto Changeover
- Auto Fan Speed Control
- Self Diagnostics with Digital Display
- Auto Restart after Power Failure
- Anti-Corrosion Treatment on Heat Exchanger
- Max Piping (09/12 MBH): 66' Length, 49' Height
- Max Piping (15/18/24 MBH): 98' Length, 66' Height

[†] Wall-Mounted Models Only

Ideal Solution For

- Primary living areas (master bedrooms and living rooms)
- Hot or cold rooms
- Rooms with poor air flow
- New construction
- Renovations and remodeling
- Secondary bedrooms, offices, garages, basements, attics, and sun rooms



Comfortable Limited Warranty* Protection



*Complete warranty details available from your local dealer or at www.daikincomfort.com. To receive the 12-Year Parts Limited Warranty, online registration must be completed within 60 days of installation. Online registration is not required in California or Quebec.

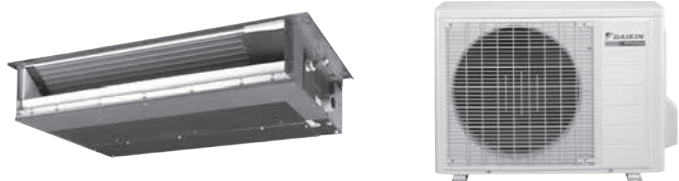
Wall-Mounted Units

LV Series High-Efficiency System Performance						
Nominal Capacities		0.75 Ton	1.0 Ton	1.25 Ton	1.5 Ton	2.0 Ton
Cooling Capacity (Rated)	BTU/h	9,000	12,000	15,000	18,000	21,500
Cooling Capacity (Min–Max)	BTU/h	4,400–10,600	4,800–13,800	5,800–18,000	5,800–21,600	7,800–25,800
Heating Capacity (Rated)	BTU/h	12,000	14,400	18,000	21,600	25,400
Heating Capacity (Min–Max)	BTU/h	4,400–15,600	4,800–18,000	5,800–22,300	5,800–26,700	7,800–31,400
SEER		24.5	23	20.6	20.3	20
COP		4.5	4.4	4	3.7	3.4
EER		15.3	12.8	14.4	12.7	12.5
HSPF		12.5	12.5	11.6	11	10.6
Electrical Data						
Power Supply	V/Ph/Hz	208-230/1/60	208-230/1/60	208-230/1/60	208-230/1/60	208-230/1/60
Minimum Circuit Amps	A	8	8.8	13.8	13.8	17.5
Maximum Overcurrent Protection	A	15	15	20	20	20
Power Consumption- Cooling	W	590	940	1,040	1,420	1,720
Power Consumption- Heating	W	790	970	1,320	1,710	2,210
Indoor Units: FTXS_LVJU Wall-Mounted Units						
Model Name		FTXS09LVJU	FTXS12LVJU	FTXS15LVJU	FTXS18LVJU	FTXS24LVJU
Moisture Removal	gal/h	0.3	0.5	0.8	1	1.2
Airflow-Wet (H/M/L/SL)	CFM	381/279/194/145	403/307/205/155	568/477/385/360	584/484/385/360	644/544/350/328
Airflow-Dry (H/M/L/SL)	CFM	420/321/233/219	438/335/240/212	593/505/417/371	625/526/431/399	699/572/445/403
Sound Pressure- Cooling (H/M/L/SL)	dB(A)	41/33/25/22	45/37/29/23	45/40/35/32	46/41/36/33	51/42/37/34
Sound Pressure- Heating (H/M/L/SL)	dB(A)	42/35/28/25	45/39/29/26	43/38/33/30	45/40/35/32	48/42/37/34
Piping Connections	Liquid (O.D.) Gas (O.D.) Condensate Drain	in. in. in.	Ø 1/4 Ø 3/8 Ø 5/8	Ø 1/4 Ø 3/8 Ø 5/8	Ø 1/4 Ø 1/2 Ø 5/8	Ø 1/4 Ø 5/8 Ø 5/8
Dimensions (H x W x D)	in.	11 1/2" X 31 1/2" X 8 7/16"		13 3/8" X 41 1/16" X 9 1/4"		
Net Weight	lbs.	20	22	31	31	31
Outdoor Units: RXS_LVJU Heat Pump						
Model Name		RXS09LVJU	RXS12LVJU	RXS15LVJU	RXS18LVJU	RXS24LVJU
Sound Pressure Level- Cooling	dB(A)	47/43	49/44	47/44	49/46	52/49
Sound Pressure Level- Heating	dB(A)	48/44	49/45	48/45	49/46	52/49
Operating Range- Cooling	°F DB	14° – 115°	14° – 115°	14° – 115°	14° – 115°	14° – 115°
Operating Range- Cooling ¹	°F DB	0° – 115°	0° – 115°	0° – 115°	0° – 115°	0° – 115°
Operating Range- Heating	°F DB	5° – 77°	5° – 77°	5° – 77°	5° – 77°	5° – 77°
Max. Piping Length	ft.	65.6	65.6	98.4	98.4	98.4
Max. Piping Height	ft.	49.2	49.2	65.6	65.6	65.6
Dimensions (H x W x D)	in.	21 1/8" X 30 3/8" X 11 1/4"		28 15/16" X 32 1/2" X 11 13/16"		30 5/16" X 35 7/16" X 12 3/8"
Net Weight	lbs.	75	75	104	104	159

¹ with Optional Wind Baffle

LV Series — Up to 15.5 SEER/10.4 HSPF

Slim-Duct Units



Comfort Features

- Energy Efficient –Up to 15.5 SEER, 10.5 HSPF and 11.2 EER
- Offers ultra-efficient cooling and heating operation and exceptional savings on utility bills compared to conventional lower-efficiency systems.
- Advanced Filtration – Long life, washable filters remove a wide range of airborne particles and decompose odors, such as those from cooking, painting, smoking and other sources.
- Quiet Operation – LV Slim Duct indoor and outdoor units offer exceptionally low sound levels for premium comfort without the noise.
- Wireless Control – Hand held remote features an LCD screen with back-lit display, Econo Mode, Powerful Mode, and more.

Standard Features

- Inverter Compressor
- 208/230/1 Power Supply
- Cooling Operating Range 0°–115° F (with Wind Baffle)
- Heating Operating Range 0°–77° F (with Drain Pan Heater)
- Precharged for up to 32 ft of Liquid Line
- Indoor Sound Pressure as Low as 26 dB(A)
- Outdoor Sound Pressures as Low as 48 dB(A)
- Program Dry Function
- Powerful Operation
- Intelligent Eye Occupancy Sensor[†]
- Backlit LCD Wireless Remote Controller
- 3-D Airflow[†]
- Weekly Timer[†]
- Outdoor Unit Quiet Operation
- Auto Changeover
- Auto Fan Speed Control
- Self Diagnostics with Digital Display
- Auto Restart after Power Failure
- Anti-Corrosion Treatment on Heat Exchanger
- Max Piping (09/12 MBH): 66' Length, 49' Height
- Max Piping (15/18/24 MBH): 98' Length, 66' Height

[†] Wall-Mounted Models Only

Ideal Solution For

- New construction
- Renovations and remodeling
- Secondary bedrooms, offices, garages, basements, attics, and sun rooms
- Rooms with soffit ceilings and areas that require short duct runs
- Units can be installed in conditioned spaces or in unconditioned spaces if unit is properly insulated.



Comfortable Limited Warranty* Protection



*Complete warranty details available from your local dealer or at www.daikincomfort.com. To receive the 12-Year Parts Limited Warranty, online registration must be completed within 60 days of installation. Online registration is not required in California or Quebec.

LV Series Standard-Efficiency System Performance			
Nominal Capacities		0.75 Ton	1.0 Ton
Cooling Capacity (Rated)	BTU/h	8,500	11,500
Cooling Capacity (Min–Max)	BTU/h	4,400- 8,500	4,800- 11,500
Heating Capacity (Rated)	BTU/h	10,000	11,500
Heating Capacity (Min–Max)	BTU/h	4,400- 10,000	4,800- 11,500
SEER		15.1	15.5
COP		3.5	3.5
EER		11.2	9.1
HSPF		10.3	10.4
Electrical Data			
Power Supply	V/Ph/Hz	208-230/1/60	208-230/1/60
Minimum Circuit Amps	A	8	8.8
Maximum Overcurrent Protection	A	15	15
Power Consumption- Cooling	W	760	1,260
Power Consumption- Heating	W	850	960
Indoor Units: FDXS_LVJU Slim Duct Built-in Units			
Model Name		FDXS09LVJU	FDXS12LVJU
External Static Pressure	in. W.G.	0.1	0.1
Moisture Removal	gal/h	2.5	4
Airflow-Wet (H/M/L/SL)	CFM	305/280/260/235	305/280/260/235
Airflow-Dry (H/M/L/SL)	CFM	305/280/260/235	305/280/260/235
Sound Pressure Level- Cooling (H/M/L)	dB(A)	35/33/31	35/33/31
Sound Pressure Level- Heating (H/M/L)	dB(A)	35/33/31	35/33/31
Piping	Liquid (O.D.)	in.	Ø 1/4
Connections	Gas (O.D.)	in.	Ø 3/8
	Condensate Drain	in.	Ø 25/32
Dimensions (H x W x D)	Inch	7 7/8 X 27 9/16 X 24 7/16	
Net Weight	lbs.	47	47
Outdoor Units: RXS_LVJU Heat Pump			
Model Name		RXS09LVJU	RXS12LVJU
Sound Pressure Level- Cooling (H/L)	dB(A)	47/43	49/44
Sound Pressure Level- Heating (H/L)	dB(A)	48/44	49/45
Operating Range- Cooling	°F DB	14° – 115°	14° – 115°
Operating Range- Cooling ¹	°F DB	0° – 115°	0° – 115°
Operating Range- Heating	°F DB	5° – 77°	5° – 77°
Max. Piping Length	ft.	65.6	65.6
Max. Piping Height	ft.	49.2	49.2
Dimensions (H x W x D)	in.	21 1/8 X 30 3/8 X 11 1/4	
Net Weight	lbs.	75	75

¹ with Optional Wind Baffle

Quaternity Series — Up to 26.1 SEER/ Up to 11.0 HSPF

Wall-Mounted Units



Comfort Features

- Energy Efficient — Up to 26.1 SEER, 11.0 HSPF, and 15.8 EER for efficient cooling and heating operation and exceptional savings on utility bills compared to conventional lower-efficiency systems.
- Undisturbed Comfort — Indoor and outdoor units offer exceptionally low sound levels for premium comfort without the noise.
- Integrated Air Cleaner — Long life, washable filters remove a wide range of airborne particles and decompose odors, such as those from cooking, painting, smoking and other sources.
- Humidity Control — Active dehumidification to a relative setting. Rooms with large amount of wood floors, pianos, computer rooms that require RH setting.
- Wireless Control — Hand-held remote features an LCD screen with back-lit display, Econo Mode, Powerful Mode, and more.

Ideal Solution For

- Hot or cold rooms
- Rooms with poor air flow
- Renovations and remodeling
- Primary living areas (master bedrooms and living rooms)
- Basements, attics and garages
- New construction

Standard Features

- Inverter Compressor
- 208/230/1 Power Supply
- Cooling Operating Range 14° - 109° F
- Heating Operating Range -4° - 75° F
- Precharged for up to 32 ft of Liquid Line
- Indoor Sound Pressure as Low as 26 dB(A)
- Outdoor Sound Pressures as Low as 46 dB(A)
- Flash Streamer Technology
- 3-D Airflow
- Comfortable Mode
- Indoor Unit Quiet Operation
- Auto Changeover
- Auto Fan Speed Control
- Self Diagnostics with Digital Display
- Auto Restart after Power Failure
- Anti-Corrosion Treatment on Heat Exchanger
- Max Piping: 32' Length, 26' Height



Comfortable Limited Warranty* Protection



*Complete warranty details available from your local dealer or at www.daikincomfort.com. To receive the 12-Year Parts Limited Warranty, online registration must be completed within 60 days of installation. Online registration is not required in California or Quebec.

Wall-Mounted Units

Quaternity Premium-Efficiency System Performance				
Nominal Capacities				
Cooling Capacity (Rated)	BTU/h	9,000	12,000	15,000
Cooling Capacity (Min – Max)	BTU/h	5,300- 12,300	5,300- 15,700	5,300- 18,000
Heating Capacity (Rated)	BTU/h	12,000	16,000	18,000
Heating Capacity (Min – Max)	BTU/h	4,400- 18,000	4,400- 19,100	4,400- 21,200
SEER		26.1	24.2	21
COP		4.5	4.0	4.0
EER		15.8	14	12.9
HSPF		11	10.6	10
Electrical Data				
Power Supply	V/Ph/Hz	208-230/1/60	208-230/1/60	208-230/1/60
Minimum Circuit Amps	A	14.5	14.5	14.5
Maximum Overcurrent Protection	A	15	15	15
Power Consumption- Cooling	W	250- 900	260- 1,300	260- 1,930
Power Consumption- Heating	W	220- 1,900	220- 2,100	230- 2,120
Indoor Units: FTXG_HVJU Wall-Mounted Units				
Model Name		FTXG09HVJU	FTXG12HVJU	FTXG15HVJU
Moisture Removal	gal/h	0.4	0.5	0.6
Airflow-Wet (H/M/L)	CFM	420/325/230	459/346/240	487/371/258
Airflow-Dry (H/M/L)	CFM	438/346/258	470/367/272	494/392/293
Sound Pressure- Cooling (H/M/L)	dB(A)	42/33/26	43/35/27	45/37/29
Sound Pressure – Heating (H/M/L)	dB(A)	42/35/28	43/36/29	44/38/31
Piping Connections	Liquid (O.D.)	in.	Ø 1/4	Ø 1/4
	Gas (O.D.)	in.	Ø 3/8	Ø 3/8
	Condensate Drain	in.	Ø 11/16	Ø 11/16
Dimensions (H x W x D)	in.	12 x 35 ³ / ₃₂ x 8 ⁷ / ₃₂		
Net Weight	lbs.	31	31	31
Outdoor Units: RXG_HVJU Heat Pump				
Model Name		RXG09HVJU	RXG12HVJU	RXG15HVJU
Sound Pressure Level- Cooling/Heating	dB(A)	46/46	49/48	50/50
Operating Range- Cooling	°F DB	14°- 109°	14°- 109°	14°- 109°
Operating Range- Heating	°F DB	-4°- 75°	-4°- 75°	-4°- 75°
Max. Piping Length	ft.	32	32	32
Max. Piping Height	ft.	26	26	26
Dimensions (H x W x D)	in.	22 ³ / ₈ X 31 ⁹ / ₃₂ X 11 ⁷ / ₃₂		
Net Weight	lbs.	99	99	99

Split System
Air Conditioners

Split System
Heat Pumps

Gas
Furnaces

Packaged
Units

Air
Handlers

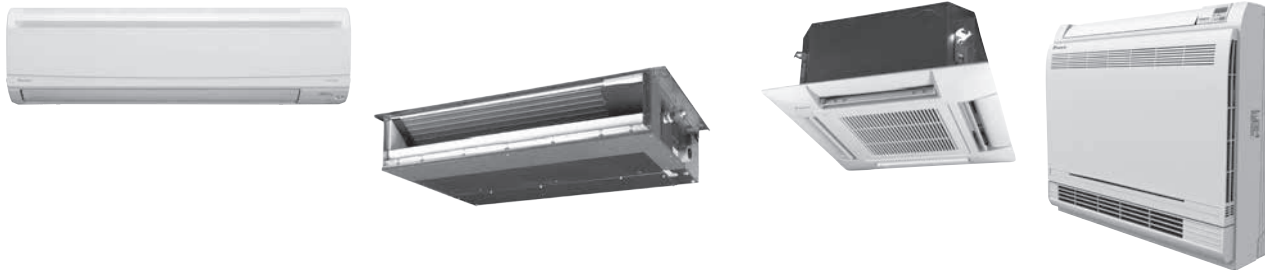
Coils

Controls &
Thermostats

Daikin
Ductless

MXS Series — Up to 19.5 SEER/Up to 11.3 HSPF

Multi-Zone Indoor Units



Zoned comfort control

Homeowners fight over temperatures in their homes and have rooms that go unused for long periods. Now they can save energy and control temperatures independently in up to 8 separate zones with a single outdoor unit. With available wall-mounted, concealed slim-duct, and ceiling cassette indoor options, Daikin Multi-Split Systems offer multiple indoor unit styles to meet all home comfort needs.

Comfort Features

- Energy Efficient – Up to 18.9 SEER, up to 12.5 HSPF, and up to 12.7 EER for ultra-efficient cooling and heating operation and exceptional savings on utility bills compared to conventional lower-efficiency systems.
- Advanced Filtration – Long life, washable filters remove a wide range of airborne particles and decompose odors, such as those from cooking, painting, smoking and other sources.
- Wireless Control – Hand held remote features an LCD screen with back-lit display, Econo Mode, Powerful Mode, and more.
- Enhanced Drainpan – MXS Series models feature an enhanced drain pan with optimal drainage for reduced ice build-up in extreme conditions.
- Intelligent eye technology – Daikin brand Multi-Splits offer indoor units equipped with an intelligent eye feature[†] that detects movement and automatically changes to an energy-saving mode when movement is not detected for over 20 minutes. Normal operation resumes once movement is detected, ensuring a comfortable experience and offering savings up to 20% in cooling and up to 30% in heating, compared to units without movement detection.

[†] Available on select models

Standard Features

- Inverter Compressor
- Outdoor Unit Quiet Operation
- 208/230/1 Power Supply
- Auto Fan Speed Control
- Heating Operating Range- 4°–75° F (w/ Drain Pan Heater)
- Self Diagnostics with Digital Display
- Pre-charged for up to 131 ft of Liquid Line
- Outdoor Sound Pressures as Low as 50 dB(A)
- Anti-Corrosion Treatment on Heat Exchanger

Ideal Solution For:

- Entire homes or floors of homes
- Multiple zones
- New construction
- Primary living areas (master bedrooms and living rooms)
- Basements



Comfortable Limited Warranty* Protection

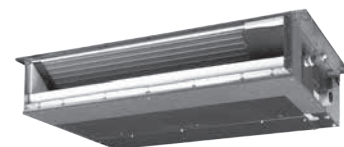


*Complete warranty details available from your local dealer or at www.daikincomfort.com. To receive the 12-Year Parts Limited Warranty, online registration must be completed within 60 days of installation. Online registration is not required in California or Quebec.

Multi-Zone Indoor Units



Indoor Wall-Mounted Units: CTXS_LVJU, and FTXS_LVJU									
Model Name			CTXS07LVJU	FTXS09LVJU	FTXS12LVJU	FTXS15LVJU	FTXS18LVJU	FTXS24LVJU	
Outdoor Unit Compatibility			2MXS18NMVJU	2MXS18NMVJU	2MXS18NMVJU	2MXS18NMVJU	3MXS24NMVJU	4MXS36NMVJU	
			3MXS24NMVJU	3MXS24NMVJU	3MXS24NMVJU	3MXS24NMVJU	4MXS36NMVJU	4MXS36NMVJU	
			4MXS36NMVJU	4MXS36NMVJU	4MXS36NMVJU	4MXS36NMVJU	RMXS48LVJU	RMXS48LVJU	
			RMXS48LVJU	RMXS48LVJU	RMXS48LVJU	RMXS48LVJU			
Airflow-Wet (H/M/L/SL)		CFM	332/261/194/145	381/ 279/ 194/ 145	403/ 307/ 205/ 155	568/ 477/ 385/ 360	583/ 484/ 385/ 360	643/ 494/ 350/ 328	699/ 572/ 445/ 403
Airflow-Dry (H/M/L/SL)		CFM	350/290/233/219	420/ 321/ 233/ 219	438/ 335/ 240/ 212	593/ 505/ 417/ 371	625/ 526/ 431/ 399	699/ 572/ 445/ 403	
Sound Pressure- Cooling (H/M/L/SL)		dB(A)	38/32/25/22	41/ 33/ 25/ 22	45/ 37/ 29/ 23	45/ 40/ 35/ 32	46/ 41/ 36/ 33	51/ 44/ 37/ 34	
Sound Pressure- Heating (H/M/L/SL)		dB(A)	38/33/28/25	42/ 35/ 28/ 25	45/ 39/ 29/ 26	43/ 38/ 33/ 30	45/ 40/ 35/ 32	48/ 42/ 37/ 34	
Piping Connections	Liquid (O.D.)	in.	Ø 1/4	Ø 1/4	Ø 1/4	Ø 1/4	Ø 1/4	Ø 1/4	
	Gas (O.D.)	in.	Ø ¾	Ø ¾	Ø ¾	Ø 1/2	Ø 1/2	Ø 5/8	
	Condensate Drain (O.D.)	in.	Ø 5/8	Ø 5/8	Ø 5/8	Ø 5/8	Ø 5/8	Ø 5/8	
Dimensions (H x W x D)		in.	11½ X 31¼ X 8⅞	11½ X 31¼ X 8⅞		13½ X 41¼ X 9¼			
Net Weight		lbs.	20	20	22	31	31	31	



Indoor Slim Duct Units: FDXS_LVJU and CDXS_LVJU							
Model Name			FDXS09LVJU	FDXS12LVJU	CDXS15LVJU	CDXS18LVJU	CDXS24LVJU
Outdoor Unit Compatibility			2MXS18NMVJU	2MXS18NMVJU	2MXS18NMVJU	3MXS24NMVJU	4MXS36NMVJU RMXS48LVJU
			3MXS24NMVJU	3MXS24NMVJU	3MXS24NMVJU	4MXS36NMVJU	
			4MXS36NMVJU	4MXS36NMVJU	4MXS36NMVJU	RMXS48LVJU	
			RMXS48LVJU	RMXS48LVJU	RMXS48LVJU		
External Static Pressure		"W.G.	0.12	0.12	0.16	0.16	0.16
Airflow-Wet (H/M/L/SL)		CFM	305/ 280/ 260/ 235	305/ 280/ 260/ 235	424/ 388/ 353/ 297	424/ 388/ 353/ 297	424/ 388/ 353/ 297
Airflow-Dry (H/M/L/SL)		CFM	305/ 280/ 260/ 235	305/ 280/ 260/ 235	424/ 388/ 353/ 297	424/ 388/ 353/ 297	424/ 388/ 353/ 297
Sound Pressure-Cooling (H/M/L/SL)		dB(A)	35/ 33/ 31/-	35/ 33/ 31/-	37/ 35/ 33/ 31	37/ 35/ 33/ 31	37/ 35/ 33/ 31
Sound Pressure-Heating (H/M/L/SL)		dB(A)	35/ 33/ 31/-	35/ 33/ 31/-	37/ 35/ 33/ 31	37/ 35/ 33/ 31	37/ 35/ 33/ 31
Piping Connections	Liquid (O.D.)	in.	ø 1/4	ø 1/4	ø 1/4	ø 1/4	ø 1/4
	Gas (O.D.)	in.	ø ¾	ø ¾	ø 1/2	ø 1/2	ø 5/8
	Condensate Drain	in.	ø 25/32	ø 25/32	ø 25/32	ø 25/32	ø 25/32
Dimensions (H x W x D)		in.	7 7⁄8 X 27 11⁄16 X 24 7⁄16			7 7⁄8 X 35 11⁄16 X 24 7⁄16	

MXS Series

Multi-Zone Indoor Units



Indoor 2'x2' Ceiling Cassette Units: FFQ_LVJU					
Model Name		FFQ09LVJU	FFQ12LVJU	FFQ15LVJU	FFQ18LVJU
Outdoor Unit Compatibility		2MXS18NMVJU 3MXS24NMVJU 4MXS36NMVJU RMSX48LVJU	2MXS18NMVJU 3MXS24NMVJU 4MXS36NMVJU RMSX48LVJU	2MXS18NMVJU 3MXS24NMVJU 4MXS36NMVJU RMSX48LVJU	3MXS24NMVJU 4MXS36NMVJU RMSX48LVJU
Cooling Capacity (Nominal)	BTU/h	9,500	12,000	15,000	18,000
Heating Capacity (Nominal)	BTU/h	11,100	14,000	17,500	21,000
Power Supply	V/Ph/Hz	208-230/1/60	208-230/1/60	208-230/1/60	208-230/1/60
Airflow Rate (H/L)	CFM	318/ 230	353/ 230	424/ 283	530/ 353
Sound Pressure- Cooling (H/L)	dB(A)	36/ 29	38/ 29	42/ 31	46/ 37
Sound Pressure- Heating (H/L)	dB(A)	36/ 29	38/ 29	42/ 31	46/ 37
Piping Connections	Liquid (O.D.)	in.	Ø 1/4	Ø 1/4	Ø 1/4
	Gas (O.D.)	in.	Ø 3/8	Ø 1/2	Ø 1/2
	Condensate Drain (O.D.)	in.	Ø 1-1/32	Ø 1-1/32	Ø 1-1/32
Dimensions- Unit (H x W x D)	in.	11½ X 22½ X 22½		11½ X 22½ X 22½	
Dimensions- Deco Panel (H x W x D)	in.	2¼ X 27½ X 27½		2¼ X 27½ X 27½	
Net Weight	lbs.	38.5	38.5	38.5	38.5



Indoor Floor-Standing Units: FVXS_NVJU				
Model Name		FVXS09NVJU	FVXS12NVJU	FVXS18NVJU
Outdoor Unit Compatibility		2MXS18NMVJU 3MXS24NMVJU 4MXS36NMVJU RMSX48LVJU	2MXS18NMVJU 3MXS24NMVJU 4MXS36NMVJU RMSX48LVJU	3MXS24NMVJU 4MXS36NMVJU RMSX48LVJU
Air Flow Rate Cooling	CFM	290	300	378
Air Flow Rate Heating	CFM	311	332	417
Power Supply	V/Ph/Hz	208-230/1/60	208-230/1/60	208-230/1/60
Sound Pressure- Cooling	dB(A)	38/ 32/ 26/ 23	39/ 33/ 27/ 24	44/ 40/ 36/ 32
Sound Pressure- Heating	dB(A)	38/ 32/ 26/ 23	39/ 33/ 27/ 24	44/ 40/ 36/ 32
Piping Connections	Liquid (O.D.)	in.	Ø 1/4	Ø 1/4
	Gas (O.D.)	in.	Ø 3/8	Ø 1/2
Dimensions- Unit (H x W x D)	in.	23¾ X 27½ X 8¾	23¾ X 27½ X 8¾	23¾ X 27½ X 8¾
Net Weight	lbs.	31	31	31

Multi-Zone Outdoor Units



Model Name		2MXS18NMVJU	3MXS24NMVJU	4MXS36NMVJU	RMXS48LVJU
Cooling Capacity (Rated- Max)	BTU/h	18,000–21,000	24,000–30,000	36,000–38,000	48,000
Heating Capacity (Rated- Max)	BTU/h	18,900–25,000	24,000–36,000	36,000–43,000	54,000
Max Connected Capacity	BTU/h	24,000	39,000	48,000	62,400
Min-Max No. of Indoor Units	Connections	2	2–3	2–4	2–8
Sound Pressure- (Cooling/Heating)	dB(A)	50/ 51	52/ 54	52/ 54	57/ 58
Operating Range- Cooling	°F DB	14° –115°	14° –115°	14° –115°	14° –115°
Operating Range- Heating	°F DB	5° – 75°	5° – 75°	5° – 75°	5° – 75°
Operating Range- Heating with Optional Drain Pan Heater	°F DB	-4° – 75°	-4° – 75°	-4° – 75°	-4° – 75°
Piping Dimensions					
Max. Length (for Total of All Rooms)	ft.	164	230	230	433
Max. Length (for One Room)	ft.	Refer to Installation Manual.			
Max. Piping Height	ft.	49.2	49.2	49.2	98.4
Electrical Data					
Power Supply	V/Ph/Hz	208-230/1/60	208-230/1/60	208-230/1/60	208-230/1/60
Minimum Circuit Amps	A	15.8	18.7	19.8	27
Maximum Overcurrent Protection	A	20	20	20	30
Dimensions (H x W x D)	in.	29 x 34¼ x 12½	29 x 34¼ x 12½	29 x 34¼ x 12½	52½ ₁₆ x 35 ₁₆ x 12½
Net Weight	lbs.	128	132	137	129
SEER/ EER	Non-Ducted	18.9/ 12.5	17.9/ 12.7	17.7/ 9.2	18.8/ 10.3
	Mixed	16.5/ 11.0	15.9/ 11.2	15.9/ 8.5	16.5/ 9.8
	Ducted	14.0/ 9.5	14.0/ 9.7	14.0/ 7.9	14.1/ 9.3
HSPF/ COP	Non-Ducted	10.7/ 4.1	12.5/ 4.6	12.2/ 4.5	11.3/ 3.0
	Mixed	9.5/ 4.1	10.4/ 3.2	10.2/ 3.4	10.5/ 2.9
	Ducted	8.2/ 4.1	8.2/ 3.9	8.2/ 3.9	9.6/ 2.7

Split System
Air ConditionersSplit System
Heat PumpsGas
FurnacesPackaged
UnitsAir
Handlers

Coils

Controls &
ThermostatsDaikin
Ductless

SkyAir Outdoor Units

Overview

SkyAir is the ultimate ducted and duct-free solution for light commercial and residential whole-house applications. Ranging from 18,000 BTU/h to 42,000 BTU/h, these innovative systems provide energy efficiency, technological reliability, and installation flexibility.



Product Features

- DC fan motor improves efficiency compared to conventional AC motors.
- Aero spiral fan and grille minimizes turbulence and increases sound reduction.
- Reluctance brushless DC compressor
- Long piping lengths up to 230 ft. allow layout flexibility
- Swing compressor with friction reduction and quieter rotation or scroll
- compressor with robust and low sound design provides maximum durability.
- Anti-corrosion treatment on the outdoor heat exchanger



Comfortable Limited Warranty* Protection



*Complete warranty details available from your local dealer or at www.daikincomfort.com.



Wall-Mounted Units



FAQ Wall-Mount	1.5 tons	2.0 tons
Indoor Model #	FAQ18PVJU	FAQ24PVJU
Outdoor Model # (Cooling Only)	RZR18PVJU	RZR24PVJU
Outdoor Model # Heat Pump	RZQ18PVJU9	RZQ24PVJU9
Cooling Capacity (Rated) (BTU/h)	18,000	24,000
Heating Capacity (Rated) (BTU/h) †	20,000	26,000
SEER / HSPF	18.6 / 8.7	17.6 / 9.1
EER	12.7	10.2
Power Supply (Voltage-Phase-Hz)	208/230V-1-60	208/230V-1-60
Liquid Piping Connections (O.D.) (in.)	Ø 3/8	Ø 3/8
Gas Piping Connections (O.D.) (in.)	Ø 5/8	Ø 5/8
Condensate Drain (in.)	Ø 11/16	Ø 11/16
Dimensions (H" x W" x D")	11 3/8 X 41 3/8 X 9	
Net Weight	31	31
Max. Piping Length (ft.)	164	164
Max. Piping Height (ft.)	98	98

† Applicable to heat pump models only



FTXS Wall-Mount	2.5 tons	3.0 tons
Indoor Model #	FTXS30LVJU	FTXS36LVJU
Outdoor Model # Cooling Only	RKS30LVJU	RKS36LVJU
Outdoor Model # Heat Pump	RXS30LVJU	RXS36LVJU
Cooling Capacity (Rated) (BTU/h)	30,000	36,000
Cooling Capacity (Min–Max) (BTU/h)	10,200–30,000	10,200–36,000
Heating Capacity (Rated) (BTU/h) †	34,800	38,000
Heating Capacity (Min–Max) (BTU/h) †	10,200–34,000	10,200–38,000
SEER / HSPF	19.3 / 8.3	17.9 / 8.3
EER	10.71	8.37
Minimum Circuit Amps	19.5	19.5
Maximum Overcurrent Protection (A)	20.0	20.0
Liquid Piping Connections (O.D.) (in.)	Ø 3/8	Ø 3/8
Gas Piping Connections (O.D.) (in.)	Ø 5/8	Ø 5/8
Condensate Drain (in.)	Ø 5/8	Ø 5/8
Dimensions (H" x W" x D")	13 3/8 X 47 3/4 X 9 7/16	13 3/8 X 47 3/4 X 9 7/16
Max. Piping Length (ft.)	98.4	98.4
Max. Piping Height (ft.)	65.6	65.6

† Applicable to heat pump models only

Split System
Air Conditioners

Split System
Heat Pumps

Gas
Furnaces

Packaged
Units

Air
Handlers

Coils

Controls &
Thermostats

Daikin
Ductless

SkyAir Indoor Units

DC-Ducted & Round-flow Units



FBQ DC Ducted	1.5 tons	2.0 tons	2.5. tons	3.0 tons	3.5 tons
Indoor Model #	FBQ18PVJU	FBQ24PVJU	FBQ30PVJU	FBQ36PVJU	FBQ42PVJU
Outdoor Model # Cooling Only	RZR18PVJU	RZR24PVJU	RZR30PVJU	RZR36PVJU	RZR42PVJU
Outdoor Model # Heat Pump	RZQ18PVJU9	RZQ24PVJU9	RZQ30PVJU	RZQ36PVJU9	RZQ42PVJU9
Cooling Capacity (Nominal) (BTU/h)	18,000	24,000	30,000	36,000	42,000
Heating Capacity (Nominal) (BTU/h)	20,000	27,000	34,000	40,000	47,000
SEER / HSPF †	17.5 / 10.6	16.5 / 10.5	16.0 / 9.2	17.5 / 9.1	16.0 / 8.8
EER	14.1	12.0	10.5	11.2	10.2
Power Supply (Voltage-Phase-Hz)	208/230V-1-60	208/230V-1-60	208/230V-1-60	208/230V-1-60	208/230V-1-60
External Static Pressure ("W.G)	Standard 0.40 (0.80- 0.20)				
Liquid Piping Connections O.D.) (in.)	Ø 1/4	Ø 3/8	Ø 3/8	Ø 3/8	Ø 3/8
Gas Piping Connections (O.D.) (in.)	Ø 1/2	Ø 5/8	Ø 5/8	Ø 5/8	Ø 5/8
Condensate Drain (in.)	Ø 1-1/4	Ø 1-1/4	Ø 1-1/4	Ø 1-1/4	Ø 1-1/4
Dimensions (H" x W" x D")	11 1/8" X 41 1/8" X 9"			11 13/16" X 55 5/8" X 27 9/16"	
Max. Piping Length (ft.)	164	164	164	230	230
Max. Piping Height (ft.)	98	98	98	164	164

† Applicable to heat pump models only



FCQ Round-Flow Cassette	1.5 tons	2.0 tons	2.5. tons	3.0 tons	3.5 tons
Indoor Model #	FCQ18PAVJU	FCQ24PAVJU	FCQ30PAVJU	FCQ36PAVJU	FCQ42PAVJU
Outdoor Model # Cooling Only	RZR18PVJU	RZR24PVJU	RZR30PVJU	RZR36PVJU	RZR42PVJU
Outdoor Model # Heat Pump	RZQ18PVJU9	RZQ24PVJU9	RZQ30PVJU	RZQ36PVJU9	RZQ42PVJU9
Cooling Capacity (Rated) (BTU/h)	18,000	24,000	30,000	36,000	42,000
Heating Capacity (Rated) (BTU/h) †	20,000	27,000	34,000	40,000	47,000
SEER / HSPF †	17.2 / 10.1	16.8 / 9.7	15.8 / 9.7	17.5 / 8.4	16.0 / 8.5
EER	13.9	12.0	10.2	11.2	10.2
Power Supply (Voltage-Phase-Hz)	208/230V-1-60	208/230V-1-60	208/230V-1-60	208/230V-1-60	208/230V-1-60
Liquid Piping Connections (O.D.) (in.)	Ø 1/4 **	Ø 3/8	Ø 3/8	Ø 3/8	Ø 3/8
Gas Piping Connections (O.D.) (in.)	Ø 1/2 **	Ø 3/8	Ø 3/8	Ø 3/8	Ø 3/8
Condensate Drain (in.)	Ø 1 1/4	Ø 1 1/4	Ø 1 1/4	Ø 1 1/4	Ø 1 1/4
Dimensions (H" x W" x D")	30 5/16" X 35 7/16" X 12 1/2"			52 15/16" X 35 7/16" X 12 1/2"	
Max. Piping Length (ft.)	164	164	164	230	230
Max. Piping Height (ft.)	98	98	98	164	164

† Applicable to heat pump models only

** Use a 3/8" X 3/8" Line set and reduce at the indoor unit connections. Refer to Technical Bulletin #OULr13

Ceiling-Suspended & Floor-Standing Units



FHQ Ceiling-Suspended	1.5 tons	2.0 tons	2.5. tons	3.0 tons	3.5 tons
Indoor Model #	FHQ18PVJU	FHQ24PVJU	FHQ30PVJU	FHQ36MVJU	FHQ42MVJU
Outdoor Model # Cooling Only	RZR18PVJU	RZR24PVJU	RZR30PVJU	RZR36PVJU	RZR42PVJU
Outdoor Model # Heat Pump	RZQ18PVJU9	RZQ24PVJU9	RZQ30PVJU	RZQ36PVJU9	RZQ42PVJU9
Cooling Capacity (Rated) (BTU/h)	18,000	24,000	30,000	36,000	40,500
Heating Capacity (Rated) (BTU/h) †	20,000	27,000	34,000	37,500	39,500
SEER / HSPF †	18.0 / 11.1	18.1 / 11.1	18.1 / 10.0	17.2 / 8.4	13.8 / 8.2
EER	14.0	12.6	10.5	10.2	9.5
Power Supply (Voltage-Phase-Hz)	208/230V-1-60	208/230V-1-60	208/230V-1-60	208/230V-1-60	208/230V-1-60
Liquid Piping Connections (O.D.) (in.)	Ø ¾	Ø ¾	Ø ¾	Ø ¾	Ø ¾
Gas Piping Connections (O.D.) (in.)	Ø 5/8	Ø 5/8	Ø 5/8	Ø 5/8	Ø 5/8
Condensate Drain (in.)	Ø 1	Ø 1	Ø 1	Ø 1	Ø 1
Dimensions (H" x W" x D")	7 1/16" X 62 5/8" X 26 3/4"	7 1/16" X 62 5/8" X 26 3/4"			
Max. Piping Length (ft.)	164	164	164	230	230
Max. Piping Height (ft.)	98	98	98	164	164

† Applicable to heat pump models only



FTQ Air Handler	1.5 tons	2.0 tons	2.5. tons	3.0 tons	3.5 tons
Indoor Model #	FTQ18PBVJU	FTQ24PBVJU	FTQ30PBVJU	FTQ36PBVJU	FTQ42PBVJU
Outdoor Model #	RZQ18PVJU9	RZQ24PVJU9	RZQ30PVJU9	RZQ36PVJU9	RZQ42PVJU9
Cooling Capacity (Rated) (BTU/h)	18,000	24,000	30,000	36,000	40,000
Cooling Capacity (Min-Max) (BTU/h)	9,000-18,000	9,000-24,000	12,000-30,000	12,000-36,000	12,000-42,000
Heating Capacity (Rated) (BTU/h) †	20,000	27,000	34,000	40,000	47,000
Heating Capacity (Min-Max) (BTU/h) †	9,000-20,000	9,000-27,000	12,000-34,000	12,000-40,000	12,000-47,000
SEER / HSPF †	20.0 / 12.0	19.0 / 11.5	19.5 / 10.0	18.0 / 9.5	17.0 / 9.0
COP / EER	4.0 / 14.5	3.8 / 13.5	3.7 / 19.5	3.6 / 12.5	3.2 / 12.0
Power Supply (Voltage-Phase-Hz)	208/230V-1-60	208/230V-1-60	208/230V-1-60	208/230V-1-60	208/230V-1-60
External Static Pressure ("WG.)	Up to 0.50	Up to 0.50	Up to 0.50	Up to 0.50	Up to 0.50
Liquid Piping Connections (O.D.) (in.)	Ø ¾	Ø ¾	Ø ¾	Ø ¾	Ø ¾
Gas Piping Connections (O.D.) (in.)	Ø 5/8	Ø 5/8	Ø 5/8	Ø 5/8	Ø 5/8
Condensate Drain (in.)	Ø 1	Ø 1	Ø 1	Ø 1	Ø 1
Dimensions (H" x W" x D")	48 3/4" x 22 x 26		58 3/4" x 22 x 26		
Max. Piping Length (ft.)	98.0	98.0	98.0	230.0	230.0
Max. Piping Height (ft.)	98.0	98.0	98.0	164.0	164.0

† Applicable to heat pump models only

Ductless Systems

Item #	Item Description
Controller Options	
BRC7E830	Wireless Remote Control Kit
BRC944B2-A08	Wired Remote Controller- Kit Reference- see next 3 items
BRC944B2	Wired Controller- Part 1 of BRC944B2-A08 Kit
BRCW901A08	Wired Controller Cord- Part 2 of BRC944B2-A08 Kit
KRP980B1	Interface Adapter for BRC944B2-A08 Kit- Part 3 (Required for the 09.12 KEVJU)
BRCW901A03	Wired Controller Cord- 10 ft.
KRP067A41	Interface Adapter for BRC944B2 (Required for 09 and 12 size of 15 and 19 Series models)
KRP980B2	Interface Adapter for BRC944B2 (Required for 18 and 24 sizes of 15 and 19 Series models)
DACA- BRCW901P10	Remote Controller Cable, Plenum Rated, 10 ft.
DACA- BRCW901P25	Remote Controller Cable, Plenum Rated, 25 ft.
DACA-TS1-1	Daikin ENVi Intelligent Thermostat Kit
Filter Replacements	
KAF918A44	Air-purifying filter without frame
KAF952B42	Air-purifying filter without frame
KAF974B42S	Air-purifying filter
KAF970A45	Air-purifying filter (15 and 19 Series models)
KAF970A46	Air-purifying filter (15 and 19 Series models)
KAF968B42	Air-purifying filter (FVX floor-standing model)
Mini-Split Pads - Plastic Pad	
EL1838-3	Elite Plastic Pad 18 x 38 x 3
EL2436-3	Elite Plastic Pad 24 x 36 x 3
Mini-Split Pads - Ultralite - Concrete Based Pad	
UC1636-2	Ultralite Pad 16 x 36 x 2
UC2436-2	Ultralite Pad 24 x 36 x 2
UC2436-3	Ultralite Pad 16 x 36 x 3
UC2436-3	Ultralite Pad 24 x 36 x 3
Mini-Split Pads - Florida Market	
H1840-4	N FL Hurricane Pad 18 x 40 x 4- 150 MPH Zone
H2436-4	N FL Hurricane Pad 24 x 36 x 4- 150 MPH Zone
HT1840-4	S FL Hurricane Pad 18 x 40 x 4- 175 MPH Zone
HT2436-4	S FL Hurricane Pad 24 x 36 x 4- 175 MPH Zone

Item #	Item Description
Wall-Mount Brackets	
DACA-WB-4	Wall Condenser Bracket, Powdercoat, 300l b. Capacity — WBB300- 87738
DACA-WB-3	Wall Condenser Bracket, Powdercoat, 500 lb. Capacity — WBB500- 87735
DACA-WB-2	Wall Brackets Kit w/o Bar- 23½ X 16½- 330 lb. cap — Sau
DACA-WB-1	Adj Wall Bracket w/Support Bar- 17½ X 16½ X 31½ — 242 lb. cap- Sau
Linesets - Non-Flared - White PE Style Rugged Linehide - PDM	
DCTLS14121225	LINESET GEL NF ¼ X ½ X ½, 25ft- NF- White Hide (Replaces LS14121210DMSF, LS14121215DMSF)
DCTLS14121235	LINESET GEL NF ¼ X ½ X ½, 35ft- NF- White Hide (Replaces LS14121230DMSF)
DCTLS14121250	LINESET GEL NF ¼ X ½ X ½, 50ft- NF- White Hide (Replaces LS14121250DMSF, LS14121265DMSF, LS141212100DMSF)
DCTLS14381225	LINESET GEL NF ¼ X ¾ X ½, 25ft- NF- White Hide
DCTLS14381235	LINESET GEL NF ¼ X ¾ X ½, 35ft- NF- White Hide
DCTLS14381250	LINESET GEL NF ¼ X ¾ X ½, 25ft- NF- White Hide
DCTLS14581225	LINESET GEL NF ¼ X ¾ X ½, 25ft- NF- White Hide
DCTLS14581235	LINESET GEL NF ¼ X ¾ X ½, 35ft- NF- White Hide
DCTLS14581250	LINESET GEL NF ¼ X ¾ X ½, 50ft- NF- White Hide
DCTLS38581225	LINESET GEL NF ¾ X ¾ X ½, 25ft- NF- White Hide
DCTLS38581235	LINESET GEL NF ¾ X ¾ X ½, 35ft- NF- White Hide
DCTLS38581250	LINESET GEL NF ¾ X ¾ X ½, 50ft- NF- White Hide
Linesets - Flared - Black Rubber - JMF	
LS14381230DMSF	LS ¼ x ¾ x ½ x 30 DMS Flared- Black Rubber Insulation
LS14381250DMSF	LS ¼ x ¾ x ½ x 50 DMS Flared- Black Rubber Insulation
LS14121230DMSF	LS ¼ x ½ x ½ x 30 DMS Flared- Black Rubber Insulation
LS14121250DMSF	LS ¼ x ½ x ½ x 50 DMS Flared- Black Rubber Insulation
LS14121265DMSF	LS ¼ x ½ x ½ x 65 DMS Flared- Black Rubber Insulation
LS14381265DMSF	LS ¼ x ¾ x ½ x 65 DMS Flared- Black Rubber Insulation
LS14581265DMSF	LS ¼ x ¾ x ½ x 65 DMS Flared- Black Rubber Insulation
LS38581265DMSF	LS ¾ x ¾ x ½ x 65 DMS Flared- Black Rubber Insulation
LS141212100DMSF	LS ¼ x ½ x ½ x 100 DMS Flared- Black Rubber Insulation
LS143812100DMSF	LS ¼ x ¾ x ½ x 100 DMS Flared- Black Rubber Insulation
LS145812100DMSF	LS ¼ x ¾ x ½ x 100 DMS Flared- Black Rubber Insulation

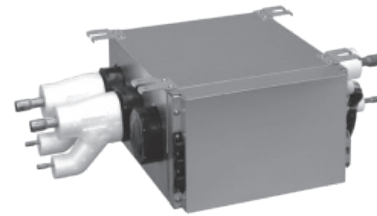
Split System
Air ConditionersSplit System
Heat PumpsGas
FurnacesPackaged
UnitsAir
Handlers

Coils

Controls &
ThermostatsDaikin
Ductless

Accessories

Ductless Systems



Line Sets			
Model Number	Size (in.)	Length (ft.)	Insulation (in.)
LS14381210DMSF	¼ x ⅜	10	1/2
LS14381215DMSF	¼ x ⅜	15	1/2
LS14381230DMSF	¼ x ⅜	30	1/2
LS14381250DMSF	¼ x ⅜	50	1/2
LS14381265DMSF	¼ x ⅜	65	1/2
LS143812100DMSF	¼ x ⅜	100	1/2
LS14121210DMSF	¼ x ½	10	1/2
LS14121215DMSF	¼ x ½	15	1/2
LS14121230DMSF	¼ x ½	30	1/2
LS14121250DMSF	¼ x ½	50	1/2
LS14121265DMSF	¼ x ½	65	1/2
LS141212100DMSF	¼ x ½	100	1/2
LS14581210DMSF	¼ x ⅝	10	1/2
LS14581215DMSF	¼ x ⅝	15	1/2
LS14581230DMSF	¼ x ⅝	30	1/2
LS14581250DMSF	¼ x ⅝	50	1/2
LS14581265DMSF	¼ x ⅝	65	1/2
LS145812100DMSF	¼ x ⅝	100	1/2

RMXS48LVJU requires at least one branch port unit. Two sizes available, 2-port and 3-port. Refer to installation manual for full refrigerant piping lengths and requirements. Only required on RMXS48LVJU.

Indoor to Outdoor Compatibility					
		2MXS18 NMVJU	3MXS24 NMVJU	4MXS36 NMVJU	RMXS48 LVJU
Wall-Mounted	CTXS07JVJU	x	x	x	x
	CTXS09HVJU	x	x	x	x
	CTXS12HVJU		x	x	x
	CTXS07LVJU	x	x	x	x
	FTXS09LVJU	x	x	x	x
	FTXS12LVJU	x	x	x	x
	FTXS15LVJU	x	x	x	x
	FTXS18LVJU		x	x	x
	FTXS24LVJU			x	x
2x2 Cassette	FFQ09LVJU	x	x	x	x
	FFQ12LVJU	x	x	x	x
	FFQ15LVJU	x	x	x	x
	FFQ18LVJU		x	x	x
Floor-Standing	FVXS09NVJU	x	x	x	x
	FVXS12NVJU	x	x	x	x
	FVXS18NVJU		x	x	x
Duct-Connected	FDXS09LVJU	x	x	x	x
	FDXS12LVJU	x	x	x	x
	CDXS15LVJU	x	x	x	x
	CDXS18LVJU		x	x	x
	CDXS24LVJU			x	x



Our continuing commitment to quality products may mean a change in specifications without notice.
© 2016 Goodman Manufacturing Company, L.P. · Houston, Texas, USA

www.goodmanmfg.com