



Compliant to NRCAN 2019  
Efficiency Standards

# HPS Express™

## Energy Efficient Commercial Low Voltage Distribution Transformers

power to perform



Hammond  
Power Solutions

# HPS Express™

## Energy Efficient Commercial Distribution Transformer



The new HPS Express™ G series of energy efficient low voltage distribution transformers offer an ideal combination of features, quality, reliability and performance to provide the most cost effective solution for your commercial applications.

### Typical Applications

The new HPS Express G is best suited to satisfy the needs of typical electrical power distribution applications including:



### Energy Efficiency

This product line meets or exceeds the latest energy efficiency requirements prescribed by the Natural Resources Canada (NRCan), and the Ontario Green Energy Act.

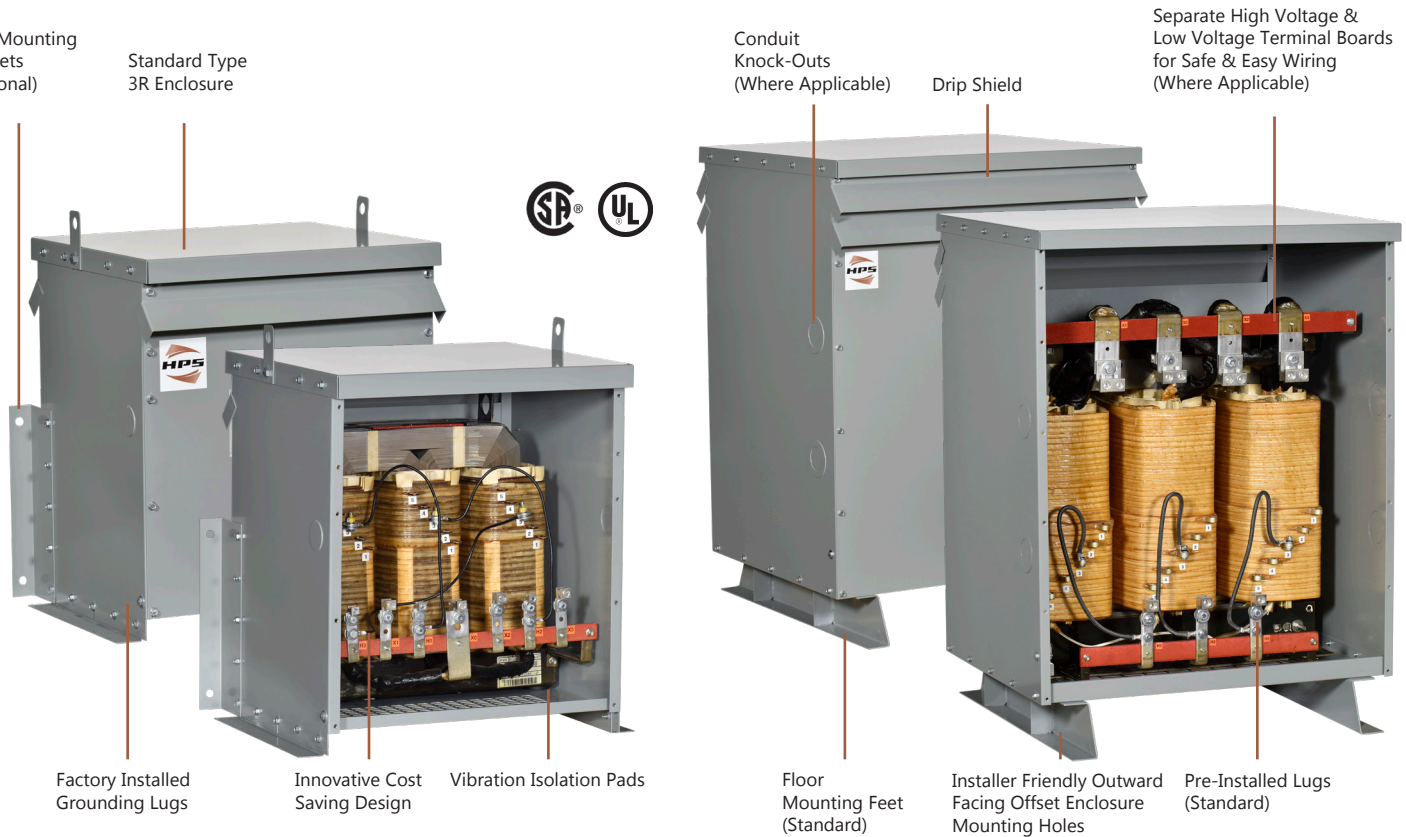
Single Phase		Three Phase	
kVA	Efficiency (%)	kVA	Efficiency (%)
15	97.70	15	97.89
25	98.00	30	98.23
37.5	98.20	45	98.40
50	98.30	75	98.60
75	98.50	112.5	98.74
100	98.60	150	98.83
167	98.70	225	98.94
250	98.80	300	99.02
333	98.90	500	99.14
		750	99.23
		1000	99.28

Note: All efficiency values are at 35% of nominal load.

### Benefits

- Significant energy savings combined with positive environmental impact
- Higher efficiency = \$ savings:
  - Increased profitability due to low operating costs
  - Decreased cost of ownership over the lifetime of the transformer
  - Less air conditioning cost due to lower heat emissions
- Product available from stock in standard voltage and kVA sizes including 250kVA in single phase and 450kVA in three phase
- Standard type 3R enclosures
- Dual CSA and UL certification
- Industry leading design and technology solutions
- Unmatched HPS quality and reliability

## Installation made fast and easy!



## Specifications - Copper or Aluminum

<b>kVA:</b>	15-250kVA single phase; 15-450kVA three phase
<b>UL Listed:</b>	File: E112313
<b>CSA Certified:</b>	File: LR3902
<b>Frequency:</b>	60 Hz
<b>Insulation System:</b>	220°C (150°C rise)
<b>Enclosure Type:</b>	Heavy duty ventilated Type 3R standard
<b>Enclosure Finish:</b>	ANSI 61 Grey, UL50
<b>Neutral:</b>	Neutral terminal for field connection (on applicable units)
<b>Standard Primary Taps:</b>	Refer to wiring diagrams for details

<b>Termination:</b>	Front accessible high and low voltage terminals; lugs provided standard; connectors suitable for aluminum and copper are provided for easy cable installation.
<b>Conduit Entry:</b>	Side knock-outs provided where applicable
<b>Impedance:</b>	Typically 3% to 6.5%
<b>Mounting:</b>	Floor mounting standard/wall mounting optional. Refer to selection tables for details.
<b>Sound Level:</b>	Meets NEMA ST-20 standards
<b>Warranty:</b>	1 year

# Selection Tables

HPS Express G  
Single Phase

## ALUMINUM WOUND, SINGLE PHASE



480 Primary Volts

120/240 Secondary Volts

60 Hz

kVA	Catalog Number	Case Style	Approx. Dimensions (Inches)			Approx. Weight (Lbs.)	Mtg Type W - Wall F - Floor	Wiring Diagram
			Width	Depth	Height			
15	<b>EG3L0015KE</b>	CN2	22.1[561]	18.2[462]	23.6[599]	160[73]	F or W*	SCD 1E
25	<b>EG3L0025KE</b>	CN3	24.9[632]	19.4[493]	25.6[650]	225[102]	F or W*	SCD 1E
37.5	<b>EG3L0037KE</b>	CN4	26.3[668]	23.3[592]	31.1[790]	310[141]	F	SCD 1E
50	<b>EG3L0050KE</b>	CN4	26.3[668]	23.3[592]	31.1[790]	370[168]	F	SCD 1E
75	<b>EG3L0075KE</b>	CN5	29[737]	26.5[673]	39.1[993]	450[204]	F	SCD 1E
100	<b>EG3L0100KE</b>	CN5	29[737]	26.5[673]	39.1[993]	560[254]	F	SCD 1E
150	<b>EG3L0150KE</b>	CN6	37.8[960]	30[762]	48.4[1229]	820[372]	F	SCD 2E
200	<b>EG3L0200KE</b>	CN6	37.8[960]	30[762]	48.4[1229]	1000[454]	F	SCD 2E

600 Primary Volts

120/240 Secondary Volts

60 Hz

kVA	Catalog Number	Case Style	Approx. Dimensions (Inches)			Approx. Weight (Lbs.)	Mtg Type W - Wall F - Floor	Wiring Diagram
			Width	Depth	Height			
15	<b>EG3L0015PE</b>	CN2	22.1[561]	18.2[462]	23.6[599]	160[73]	F or W*	SCD 1E
25	<b>EG3L0025PE</b>	CN3	24.9[632]	19.4[493]	25.6[650]	225[102]	F or W*	SCD 1E
37.5	<b>EG3L0037PE</b>	CN4	26.3[668]	23.3[592]	31.1[790]	310[141]	F	SCD 1E
50	<b>EG3L0050PE</b>	CN4	26.3[668]	23.3[592]	31.1[790]	370[168]	F	SCD 1E
75	<b>EG3L0075PE</b>	CN5	29[737]	26.5[673]	39.1[993]	450[204]	F	SCD 1E
100	<b>EG3L0100PE</b>	CN5	29[737]	26.5[673]	39.1[993]	560[254]	F	SCD 1E
150	<b>EG3L0150PE</b>	CN6	37.8[960]	30[762]	48.4[1229]	820[372]	F	SCD 2E
200	<b>EG3L0200PE</b>	CN6	37.8[960]	30[762]	48.4[1229]	1000[454]	F	SCD 2E
250	<b>EG3L0250PE</b>	CN7	41.8[1062]	36[914]	56.1[1425]	1300[590]	F	SCD 2E

## COPPER WOUND, SINGLE PHASE



480 Primary Volts

120/240 Secondary Volts

60 Hz

kVA	Catalog Number	Case Style	Approx. Dimensions (Inches)			Approx. Weight (Lbs.)	Mtg Type W - Wall F - Floor	Wiring Diagram
			Width	Depth	Height			
15	<b>EG3L0015KEC</b>	CN2	22.1[561]	18.2[462]	23.6[599]	165[75]	F or W*	SCD 1E
25	<b>EG3L0025KEC</b>	CN3	24.9[632]	19.4[493]	25.6[650]	240[109]	F or W*	SCD 1E
37.5	<b>EG3L0037KEC</b>	CN4	26.3[668]	23.3[592]	31.1[790]	340[154]	F	SCD 1E
50	<b>EG3L0050KEC</b>	CN4	26.3[668]	23.3[592]	31.1[790]	390[177]	F	SCD 1E
75	<b>EG3L0075KEC</b>	CN5	29[737]	26.5[673]	39.1[993]	540[245]	F	SCD 1E
100	<b>EG3L0100KEC</b>	CN5	29[737]	26.5[673]	39.1[993]	650[295]	F	SCD 1E
150	<b>EG3L0150KEC</b>	CN6	37.8[960]	30[762]	48.4[1229]	960[435]	F	SCD 2E
200	<b>EG3L0200KEC</b>	CN6	37.8[960]	30[762]	48.4[1229]	1080[490]	F	SCD 2E

600 Primary Volts

120/240 Secondary Volts

60 Hz

kVA	Catalog Number	Case Style	Approx. Dimensions (Inches)			Approx. Weight (Lbs.)	Mtg Type W - Wall F - Floor	Wiring Diagram
			Width	Depth	Height			
15	<b>EG3L0015PEC</b>	CN2	22.1[561]	18.2[462]	23.6[599]	165[75]	F or W*	SCD 1E
25	<b>EG3L0025PEC</b>	CN3	24.9[632]	19.4[493]	25.6[650]	240[109]	F or W*	SCD 1E
37.5	<b>EG3L0037PEC</b>	CN4	26.3[668]	23.3[592]	31.1[790]	340[154]	F	SCD 1E
50	<b>EG3L0050PEC</b>	CN4	26.3[668]	23.3[592]	31.1[790]	390[177]	F	SCD 1E
75	<b>EG3L0075PEC</b>	CN5	29[737]	26.5[673]	39.1[993]	540[245]	F	SCD 1E
100	<b>EG3L0100PEC</b>	CN5	29[737]	26.5[673]	39.1[993]	650[295]	F	SCD 1E
150	<b>EG3L0150PEC</b>	CN6	37.8[960]	30[762]	48.4[1229]	960[435]	F	SCD 2E
200	<b>EG3L0200PEC</b>	CN6	37.8[960]	30[762]	48.4[1229]	1080[490]	F	SCD 2E
250	<b>EG3L0250PEC</b>	CN7	41.8[1062]	36[914]	56.1[1425]	1440[653]	F	SCD 2E

4 W\*: Optional wall mounting kit available

Data subject to change without notice.

# Selection Tables

HPS Express G  
Three Phase



Hammond  
Power Solutions



## ALUMINUM WOUND, THREE PHASE

480D Primary Volts

208Y/120 Secondary Volts

60 Hz

kVA	Catalog Number	Case Style	Approx. Dimensions (Inches)			Approx. Weight (Lbs.)	Mtg Type W - Wall F - Floor	Wiring Diagram
			Width	Depth	Height			
15	<b>EG3A0015KB</b>	CN1	20.1[511]	17.5[445]	17.6[447]	165[75]	F or W*	SCD 3E
30	<b>EG3A0030KB</b>	CN2	22.1[561]	18.2[462]	23.6[599]	285[129]	F or W*	SCD 3E
45	<b>EG3A0045KB</b>	CN3	24.9[632]	19.4[493]	25.6[650]	345[156]	F or W*	SCD 3E
75	<b>EG3A0075KB</b>	CN4	26.3[668]	23.3[592]	31.1[790]	540[245]	F	SCD 3E
112.5	<b>EG3A0112KB</b>	CN5	29[737]	26.5[673]	39.1[993]	750[340]	F	SCD 3E
150	<b>EG3A0150KB</b>	CN5	29[737]	26.5[673]	39.1[993]	885[401]	F	SCD 3E
225	<b>EG3A0225KB</b>	CN6	37.8[960]	30[762]	48.4[1229]	1500[680]	F	SCD 3E
300	<b>EG3A0300KB</b>	CN6	37.8[960]	30[762]	48.4[1229]	1750[794]	F	SCD 3E

600D Primary Volts

208Y/120 Secondary Volts

60 Hz

kVA	Catalog Number	Case Style	Approx. Dimensions (Inches)			Approx. Weight (Lbs.)	Mtg Type W - Wall F - Floor	Wiring Diagram
			Width	Depth	Height			
15	<b>EG3A0015PB</b>	CN1	20.1[511]	17.5[445]	17.6[447]	165[75]	F or W*	SCD 3E
30	<b>EG3A0030PB</b>	CN2	22.1[561]	18.2[462]	23.6[599]	285[129]	F or W*	SCD 3E
45	<b>EG3A0045PB</b>	CN3	24.9[632]	19.4[493]	25.6[650]	345[156]	F or W*	SCD 3E
75	<b>EG3A0075PB</b>	CN4	26.3[668]	23.3[592]	31.1[790]	540[245]	F	SCD 3E
112.5	<b>EG3A0112PB</b>	CN5	29[737]	26.5[673]	39.1[993]	750[340]	F	SCD 3E
150	<b>EG3A0150PB</b>	CN5	29[737]	26.5[673]	39.1[993]	885[401]	F	SCD 3E
225	<b>EG3A0225PB</b>	CN6	37.8[960]	30[762]	48.4[1229]	1500[680]	F	SCD 3E
300	<b>EG3A0300PB</b>	CN6	37.8[960]	30[762]	48.4[1229]	1750[794]	F	SCD 3E
450	<b>EG3A0450PB</b>	CN7	41.8[1062]	36[914]	56.1[1425]	2400[1089]	F	SCD 4E

## COPPER WOUND, THREE PHASE



480D Primary Volts

208Y/120 Secondary Volts

60 Hz

kVA	Catalog Number	Case Style	Approx. Dimensions (Inches)			Approx. Weight (Lbs.)	Mtg Type W - Wall F - Floor	Wiring Diagram
			Width	Depth	Height			
15	<b>EG3A0015KBC</b>	CN1	20.1[511]	17.5[445]	17.6[447]	185[84]	F or W*	SCD 3E
30	<b>EG3A0030KBC</b>	CN2	22.1[561]	18.2[462]	23.6[599]	300[136]	F or W*	SCD 3E
45	<b>EG3A0045KBC</b>	CN3	24.9[632]	19.4[493]	25.6[650]	390[177]	F or W*	SCD 3E
75	<b>EG3A0075KBC</b>	CN4	26.3[668]	23.3[592]	31.1[790]	635[288]	F	SCD 3E
112.5	<b>EG3A0112KBC</b>	CN5	29[737]	26.5[673]	39.1[993]	815[370]	F	SCD 3E
150	<b>EG3A0150KBC</b>	CN5	29[737]	26.5[673]	39.1[993]	980[445]	F	SCD 3E
225	<b>EG3A0225KBC</b>	CN6	37.8[960]	30[762]	48.4[1229]	1600[726]	F	SCD 3E
300	<b>EG3A0300KBC</b>	CN6	37.8[960]	30[762]	48.4[1229]	1850[839]	F	SCD 3E

600D Primary Volts

208Y/120 Secondary Volts

60 Hz

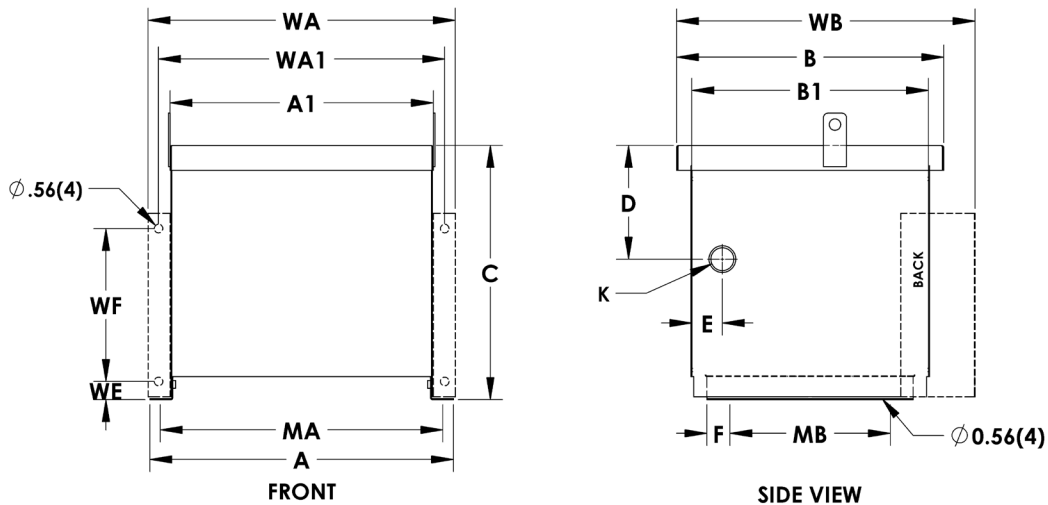
kVA	Catalog Number	Case Style	Approx. Dimensions (Inches)			Approx. Weight (Lbs.)	Mtg Type W - Wall F - Floor	Wiring Diagram
			Width	Depth	Height			
15	<b>EG3A0015PBC</b>	CN1	20.1[511]	17.5[445]	17.6[447]	185[84]	F or W*	SCD 3E
30	<b>EG3A0030PBC</b>	CN2	22.1[561]	18.2[462]	23.6[599]	300[136]	F or W*	SCD 3E
45	<b>EG3A0045PBC</b>	CN3	24.9[632]	19.4[493]	25.6[650]	390[177]	F or W*	SCD 3E
75	<b>EG3A0075PBC</b>	CN4	26.3[668]	23.3[592]	31.1[790]	635[288]	F	SCD 3E
112.5	<b>EG3A0112PBC</b>	CN5	29[737]	26.5[673]	39.1[993]	815[370]	F	SCD 3E
150	<b>EG3A0150PBC</b>	CN5	29[737]	26.5[673]	39.1[993]	980[445]	F	SCD 3E
225	<b>EG3A0225PBC</b>	CN6	37.8[960]	30[762]	48.4[1229]	1600[726]	F	SCD 3E
300	<b>EG3A0300PBC</b>	CN6	37.8[960]	30[762]	48.4[1229]	1850[839]	F	SCD 3E
450	<b>EG3A0450PBC</b>	CN7	41.8[1062]	36[914]	56.1[1425]	3000[1361]	F	SCD 4E

W\*: Optional wall mounting kit available

Data subject to change without notice.

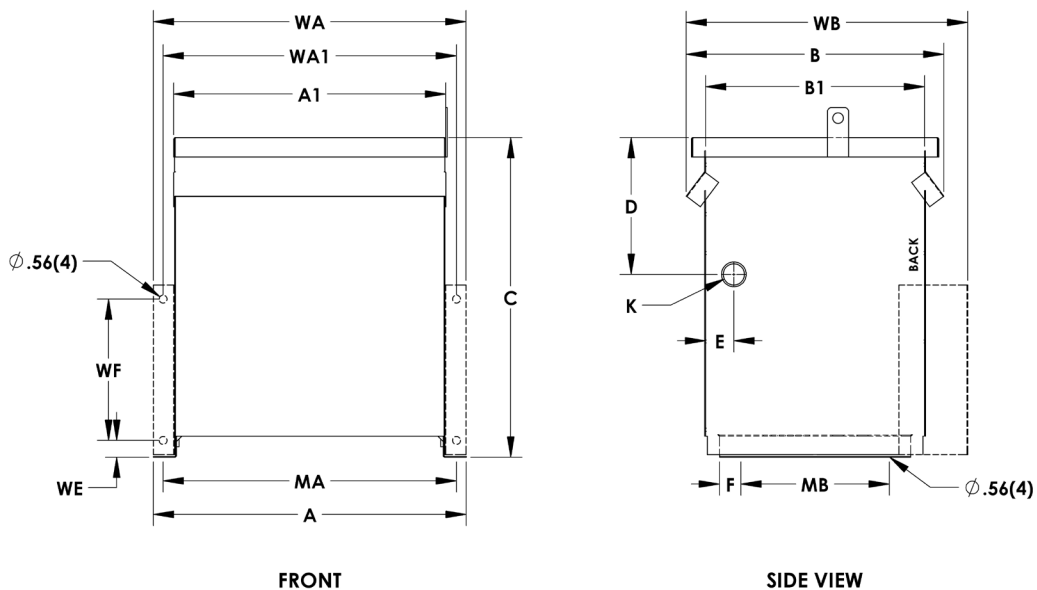
# Enclosure Drawings

## CN Series

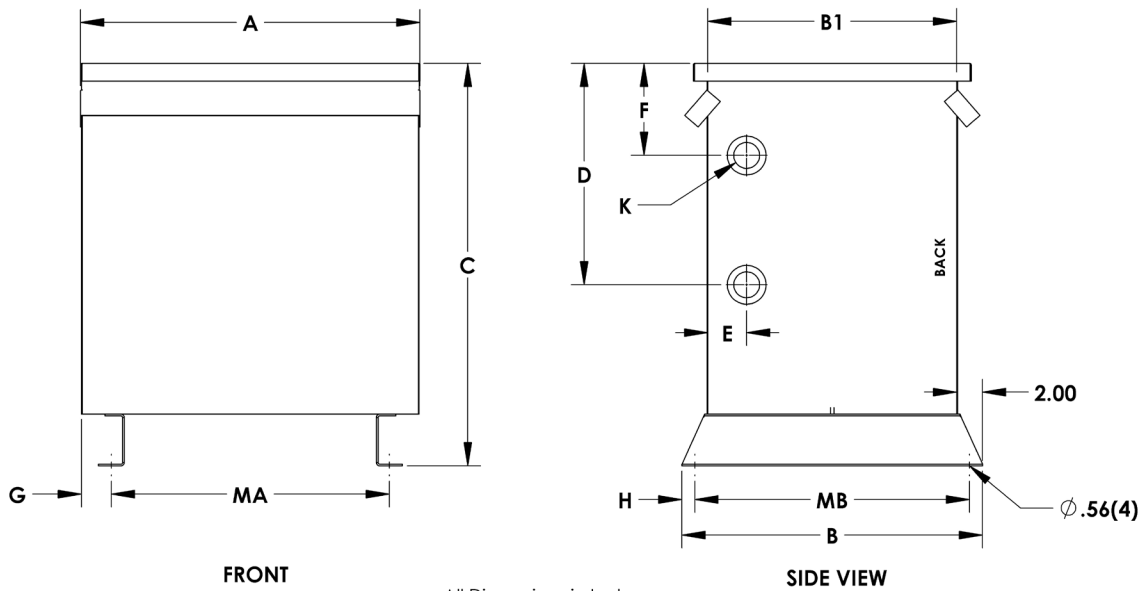


Case Style	Dimensions in Inches															
	A	A1	B	B1	C	D	E	F	K	MA	MB	WA*	WA1*	WB*	WE*	WF*
CN1	19.9 [505]	17.3 [439]	17.5 [445]	15.5 [394]	17.6 [447]	7.4 [188]	2.0 [51]	1.5 [38]	1.75 K.O. [44]	18.5 [470]	10.5 [267]	20.1 [511]	18.7 [475]	19.5 [495]	2.2 [56]	10.0 [254]

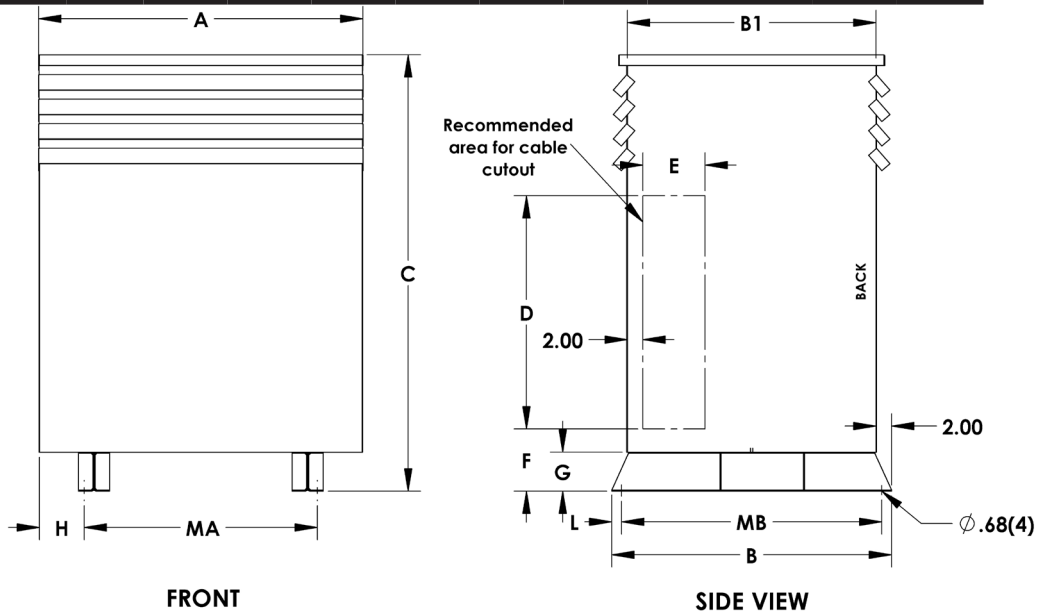
\* Dimensions of enclosure when wall-mounting bracket installed (optional accessory component).



Case Style	Dimensions in Inches															
	A	A1	B	B1	C	D	E	F	K	MA	MB	WA*	WA1*	WB*	WE*	WF*
CN2	22.1 [561]	19.2 [488]	18.2 [462]	15.5 [394]	23.6 [599]	9.7 [246]	2.0 [51]	1.5 [38]	1.75 K.O. [44]	20.8 [528]	10.5 [267]	22.1 [561]	20.8 [528]	19.9 [505]	2.2 [56]	10.0 [254]
CN3	24.9 [632]	22.0 [559]	19.4 [493]	16.5 [419]	25.6 [650]	12.0 [305]	2.0 [51]	2.0 [51]	1.75 K.O. [44]	23.5 [597]	10.5 [267]	24.9 [632]	23.5 [597]	21.0 [533]	2.2 [56]	10.0 [254]



Case Style	Dimensions in Inches											
	A	B	B1	C	D	E	F	G	H	K	MA	MB
<b>CN4</b>	26.3 [668]	23.3 [592]	19.3 [490]	31.1	17.1	3.0	7.1	2.3	1.0	2.0 x 3.0 K.O.	21.5	21.3
<b>CN5</b>	29.0 [737]	26.5 [673]	22.5	39.1	24.1	3.0	14.1	2.7	1.0	2.0 x 3.0 K.O.	23.5	24.5
<b>CN6</b>	37.8 [960]	30.0 [762]	26.0	48.4	33.4	3.0	23.4	6.8	1.0	2.0 x 3.0 K.O.	24.0	28.0



Case Style	Dimensions in Inches											
	A	B	B1	C	D	E	F	G	H	L	MA	MB
<b>CN7</b>	41.8	36.0	32.0	56.1	30.0	8.0	8.0	5.0	5.9	0.8	30.0	34.5

## Single Phase

**Voltage Range 120V to 600V  
150°C Temp. Rise**

kVA	Efficiency at 35% of Rated Load, @75°C	Impedance	Peak Inrush Current Multiple of RMS Current
15	97.70%	3.5-6.5%	12 to 15
25	98.00%		
37.5	98.20%		
50	98.31%		
75	98.50%		
100	98.60%		
150	98.68%	3.5-7%	7 to 10
167	98.70%		
250	98.80%		

## Three Phase

**Voltage Range 208V to 600V  
150°C Temp. Rise**

kVA	Efficiency at 35% of Rated Load, @75°C	Impedance	Peak Inrush Current Multiple of RMS Current
15	97.89%	1.8-6%	12 to 15
30	98.23%		
45	98.40%		
75	98.60%	2-6.5%	10 to 12
112.5	98.74%		
150	98.83%		
225	98.94%		
300	99.02%		
500	99.14%	4-7%	8 to 10

## TERMINATION DETAILS - TYPE 3R

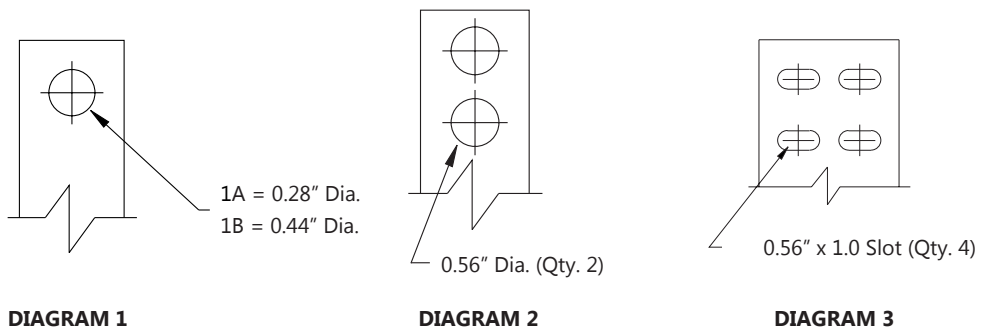
### SINGLE PHASE

kVA	VOLTAGE		
	120/240	480	600
15	Lugs	Lugs	Lugs
25	Lugs	Lugs	Lugs
37	Lugs	Lugs	Lugs
50	Lugs	Lugs	Lugs
75	Lugs	Lugs	Lugs
100	Lugs	Lugs	Lugs
150	Lugs	Lugs	Lugs
200	Lugs	Lugs	Lugs
250	Lugs	Lugs	Lugs

### THREE PHASE

kVA	VOLTAGE		
	208	480	600
15	Lugs	Lugs	Lugs
30	Lugs	Lugs	Lugs
45	Lugs	Lugs	Lugs
75	Lugs	Lugs	Lugs
112.5	Lugs	Lugs	Lugs
150	Lugs	Lugs	Lugs
225	Lugs	Lugs	Lugs
300	Dia 2	Dia 1B	Dia 1B
450	Dia 3*	Dia 2	Dia 2

\*For copper windings use Diagram 2.

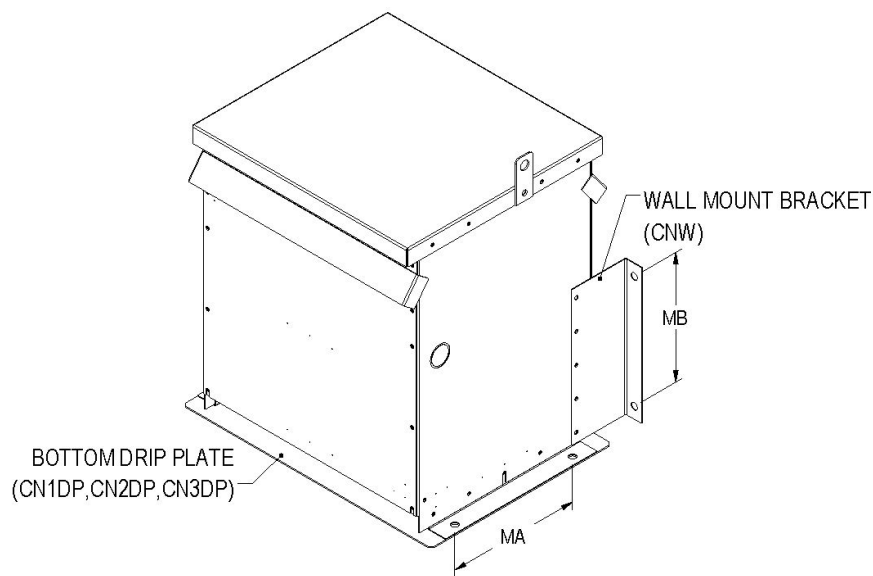


# Wall Mounting Kits

## WALL MOUNTING KITS

The CN1, CN2 and CN3 enclosures are designed with optional wall mounting capabilities. The “MB” dimensions listed in the table below indicate the location for the wall mounting hardware. The “MA” dimensions shown in the figure indicate the locations for the drip plate mounting hardware.

**Note:** When mounting the CN1, CN2, or CN3 type enclosures on the wall, a bottom drip plate must also be installed as shown in the attached drawing. Please refer to CSA 22.2 No. 47-2013 requirements. The installation of these transformers above floor level without a bottom drip plate is not permitted. All mounting hardware should be rated Grade 8 or higher.



## Individual Kits

### MOUNTING KITS

Mounting Kit P/N	Enclosure Style	MB Dimension (inches)
CNW	CN1, CN2, CN3	10.00

### DRIP PLATE KIT

Drip Plate Kit P/N	Enclosure Style	MA Dimension (inches)
CN1DP	CN1	10.50
CN2DP	CN2	10.50
CN3DP	CN3	10.50

## Complete Kits

### MOUNTING & DRIP PLATE KITS

Part Number	Enclosure Style	Kits Included	Part Description
CNWDP1	CN1	CNW & CN1DP	Set of wall mounting and drip plate kits
CNWDP2	CN2	CNW & CN2DP	
CNWDP3	CN3	CNW & CN3DP	



### ANTI-VIBRATION PAD AND VIBRATION ISOLATOR KITS

All standard transformers come with installed internal vibration absorbing pads to minimize noise during operation. Optional external "anti-vibration" pad and "vibration isolator" (for higher noise dampening) kits can be used to reduce operating noise even further. All pads are resistant to industrial contaminants like oil, acids and alkalines.

#### Anti-Vibration Pad Kits

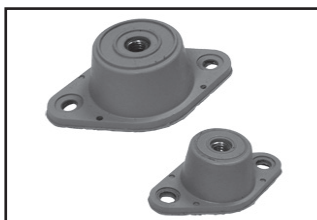
Part No.	Case Style	Description
PD1	CN1-CN6	Set of four (4) rubber anti-vibration pads which replace the standard steel enclosure washers.
PD2	CN7	



All anti-vibration pad kits and vibration isolator kits contain a set of four (4) pads or isolators. Therefore only one kit is required per transformer.

#### Vibration Isolator Kits

Part No.	Transformer Weight (Lb)	Description
NMP1	Up to 340 lbs	Set of four (4) molded neoprene and steel plate assemblies that virtually eliminate vibration noise between the transformer and the mounting surface.
NMP2	341 to 680 lbs	
NMP3	681 to 1040 lbs	
NMP4	1041 to 1740 lbs	
NMP5	1741 to 2330 lbs	
NMP6	2331 to 3450 lbs	
NMP7	3451 to 4690 lbs	



All anti-vibration pad kits and vibration isolator kits contain a set of four (4) pads or isolators. Therefore only one kit is required per transformer.

# Electrical Schematics & Connection Drawings

## SCD 1E

SCHEMATIC		CONNECTIONS			
	% Voltage	Primary Volts		Connect lines to	Inter-connect
	105.0%	504	630	H1, H2	1-2
	102.5%	492	615	H1, H2	2-3
	<b>100.0%</b>	<b>480</b>	<b>600</b>	<b>H1, H2</b>	<b>3-4</b>
	97.5%	468	585	H1, H2	4-5
	95.0%	456	570	H1, H2	5-6
	Secondary Volts		Connect lines to	Inter-connect	
	240		X1, X4	X2-X3	
	120		X1 & X3, X2 & X4	X2-X4, X1-X3	
	120/240		X1, X2, X4	X2-X3	

## SCD 2E

SCHEMATIC		CONNECTIONS			
	% Voltage	Primary Volts		Connect lines to	Inter-connect
	105.0%	504	630	H1, H2	1
	102.5%	492	615	H1, H2	2
	<b>100.0%</b>	<b>480</b>	<b>600</b>	<b>H1, H2</b>	<b>3</b>
	97.5%	468	585	H1, H2	4
	95.0%	456	570	H1, H2	5
	Secondary Volts		Connect lines to	Inter-connect	
	240		X1, X4	X2-X3	
	120		X1 & X3, X2 & X4	X2-X4, X1-X3	
	120/240		X1, X2, X4	X2-X3	

## SCD 3E

SCHEMATIC		CONNECTIONS			
	% Voltage	Primary Volts		Connect lines to	Inter-connect
	105.0%	504	630	H1, H2, H3	1
	102.5%	492	615	H1, H2, H3	2
	<b>100.0%</b>	<b>480</b>	<b>600</b>	<b>H1, H2, H3</b>	<b>3</b>
	97.5%	468	585	H1, H2, H3	4
	95.0%	456	570	H1, H2, H3	5
	Secondary Volts		Connect lines to	Inter-connect	
	208		X1, X2, X3		
	120		X1,X0 X2,X0 X3,X0		

## SCD 4E

SCHEMATIC		CONNECTIONS			
	% Voltage	Primary Volts		Connect lines to	Inter-connect
	105.0%	630		H1, H2, H3	1-2
	102.5%	516		H1, H2, H3	2-3
	<b>100.0%</b>	<b>600</b>		<b>H1, H2, H3</b>	<b>3-4</b>
	97.5%	585		H1, H2, H3	4-5
	95.0%	570		H1, H2, H3	5-6
	Secondary Volts		Connect lines to	Inter-connect	
	208		X1, X2, X3		
	120		X1,X0 X2,X0 X3,X0		



**CANADA**

Hammond Power Solutions  
595 Southgate Drive  
Guelph, Ontario N1G 3W6  
Tel: (519) 822-2441  
Fax: (519) 822-9701  
Toll Free: 1-888-798-8882  
sales@hammondpowersolutions.com

**ASIA**

Hammond Power Solutions Pvt. Ltd.  
D. No. 5-2/222/IP/B, II-Floor, Icon Plaza  
Allwyn X-Roads, Miyapur, Hyderabad 500 049  
Tel: +91-994-995-0009  
marketing-india@hammondpowersolutions.com

**UNITED STATES**

Hammond Power Solutions  
1100 Lake Street  
Baraboo, Wisconsin 53913-2866  
Tel: (608) 356-3921  
Fax: (608) 355-7623  
Toll Free: 1-866-705-4684  
sales@hammondpowersolutions.com

**EMEA (Sales Office)**

Hammond Power Solutions SpA  
Tel: +49 (152) 08800468  
sales-emea@hammondpowersolutions.com