

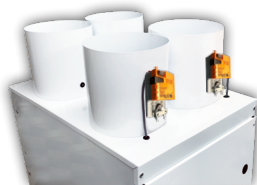


Small Duct High Velocity Heating, Cooling and Home Comfort Systems

Hi-Velocity Systems Parts List - July 2017



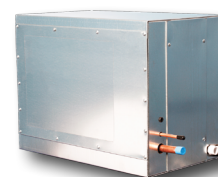
Hi-Velocity
Fan Coils
Page 3



Multi-Zone Options
Page 4



Lo-Velocity
Fan Coils
Page 5



Heating/Cooling Coils
Pages 6,7



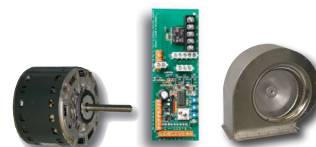
Flexible Duct
& Accessories
Pages 8,9



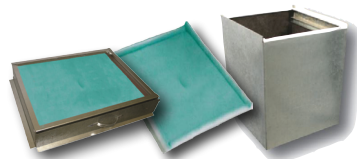
Decorative Vent Plates
Page 10



HE PS Air Purification
Page 11



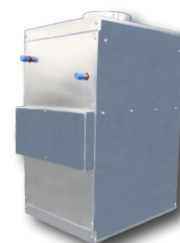
Motors, Controllers, Blowers
Pages 12,13



Filter Racks/Filters/Return Air
Page 14



Refrigerant Components
Page 15



Builders Series
Page 16,17



Hi-Velocity Fan Coil Units



HE-Z Blower Unit (BU)
w/ WEG



HE-Z Heating Unit (H)
w/ WEG

HE-Z Fan Coil with 110v WEG - Zoning Capable

Part Name	Description	Wt	Ship. Dim.	Part Number
HE-Z-50 H -110v	Heating Unit w/ VFD Motor & 1/2 HP 110v WEG	102	37/19/17	41011400050
HE-Z-70 H -110v	Heating Unit w/ VFD Motor & 1/2 HP 110v WEG	115	37/19/23	41011400070
HE-Z-100 H -110v	Heating Unit w/ VFD Motor & 1 HP 110v WEG	131	37/19/29	41011400100

HE-Z-50 BU -110v	Blower Unit w/ VFD Motor & 1/2 HP 110v WEG	86	37/19/17	41011200050
HE-Z-70 BU -110v	Blower Unit w/ VFD Motor & 1/2 HP 110v WEG	98	37/19/23	41011200070
HE-Z-100 BU -110v	Blower Unit w/ VFD Motor & 1 HP 110v WEG	112	37/19/29	41011200100

HE-Z Fan Coil with 220v WEG - Zoning Capable

Part Name	Description	Wt	Ship. Dim.	Part Number
HE-Z-50 H -220v	Heating Unit w/ VFD Motor & 1/2 HP 220v WEG	101	37/19/17	41010400050
HE-Z-70 H -220v	Heating Unit w/ VFD Motor & 1/2 HP 220v WEG	114	37/19/23	41010400070
HE-Z-100 H -220v	Heating Unit w/ VFD Motor & 1 HP 220v WEG	130	37/19/29	41010400100

HE-Z-50 BU -220v	Blower Unit w/ VFD Motor & 1/2 HP 220v WEG	85	37/19/17	41010200050
HE-Z-70 BU -220v	Blower Unit w/ VFD Motor & 1/2 HP 220v WEG	97	37/19/23	41010200070
HE-Z-100 BU -220v	Blower Unit w/ VFD Motor & 1 HP 220v WEG	111	37/19/29	41010200100

• **HE-Z Units** come complete with powder coated insulated cabinet & fan, Variable Frequency Drive Motor, pre-wired PSB circuit board and WEG Controls pre-installed. Packaged with one universal vent plate key. Heating (H) Units come with HWC water coils installed.

Hi-Velocity HV Fan Coil



HV Heating Unit (H)

Part Name	Description	Wt	Ship. Dim.	Part Number
HV-50 H	Heating Unit w/ PSC Motor	78	37/19/17	10010100050
HV-70 H	Heating Unit w/ PSC Motor	95	37/19/23	10010100070
HV-100 H	Heating Unit w/ PSC Motor	112	37/19/29	10010100100

HV-50 BU	Blower Unit w/ PSC Motor	64	37/19/17	10013100050
HV-70 BU	Blower Unit w/ PSC Motor	74	37/19/23	10013100070
HV-100 BU	Blower Unit w/ PSC Motor	92	37/19/29	10013100100

• **HV Units** come complete with powder coated insulated cabinet & fan, PSC Motor, pre-wired PSC circuit board c/w heat/cool/dehumidification/constant fan/auxiliary relays, timer circuit. Packaged with one universal vent plate key. Heating (H) Units come with HWC water coils installed.

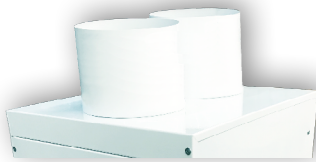
HE-Z Series Zoning Add-Ons

HE-Z Series w/ Zoning Package

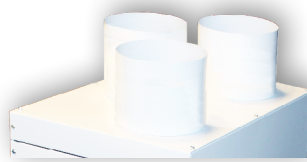


HE-Z Zone Package Add-Ons - 2, 3 or 4 Collars

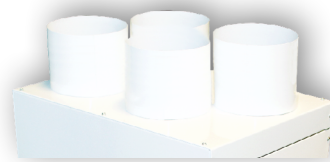
The Zoning Add-On package includes pre-wired zone panel and 2, 3 or 4 collars, each w/ power open/close dampers and actuators installed. These are currently available pre-installed on our HE-Z Series Fan Coils. Please order HE-Z fan coil unit from page 3 of our Standard Price List, and add these multi-outlet tops to your order as a separate part.



2 Supply Collars



3 Supply Collars



4 Supply Collars

50 Series Add-Ons

Part Name	Description	Part Number
HE-Z-50-Z2	2 Zone Add-On (2 x 8" Collars) for HE-Z-50	40120220050
HE-Z-50-Z3	3 Zone Add-On (2 x 8" Collars, 1 x 6" Collar) for HE-Z-50	40120230050
HE-Z-50-Z4	4 Zone Add-On (4 x 6" Collars) for HE-Z-50	40120240050

70 Series Add-Ons

Part Name	Description	Part Number
HE-Z-70-Z2	2 Zone Add-On (2 x 8" Collars) for HE-Z-70	40120220070
HE-Z-70-Z3	3 Zone Add-On (2 x 8" Collars, 1 x 6" Collar) for HE-Z-70	40120230070
HE-Z-70-Z4	4 Zone Add-On (4 x 6" Collars) for HE-Z-70	40120240070

100 Series Add-Ons

Part Name	Description	Part Number
HE-Z-100-Z2	2 Zone Add-On (2 x 10" Collars) for HE-Z-100	40120220100
HE-Z-100-Z3	3 Zone Add-On (3 x 8" Collars) for HE-Z-100	40120230100
HE-Z-100-Z4	4 Zone Add-On (4 x 8" Collars) for HE-Z-100	40120240100

PLEASE NOTE: Zoning packages are not sold separately. These fan coils will ship complete from the Energy Saving Products Factory in Canada.

Lo-Velocity Fan Coil Units

LV-Z (Lo-Velocity) Fan Coil w/ 110v Zoning Controls



LV-Z Fan Coil (H)

Part Name	Description	Wt	Ship. Dim.	Part Number
LV-Z-1050 H -110v	Heating Unit w/ VFD Motor & 1/2 HP 110v WEG	105	36.5/28/19	41011401050
LV-Z-1750 H -110v	Heating Unit w/ VFD Motor & 1 HP 110v WEG	165	41.5/29.5/25.5	41011401750
LV-Z-1050 BU -110v	Blower Unit w/ VFD Motor & 1/2 HP 110v WEG	95	36.5/28/19	41011201050
LV-Z-1750 BU -110v	Blower Unit w/ VFD Motor & 1 HP 110v WEG	125	41.5/29.5/25.5	41011201750

LV-Z (Lo-Velocity) Fan Coil w/ 220v Zoning Controls

Part Name	Description	Wt	Ship. Dim.	Part Number
LV-Z-1050 H -220v	Heating Unit w/ VFD Motor & 1/2 HP 220v WEG	105	36.5/28/19	41040101050
LV-Z-1750 H -220v	Heating Unit w/ VFD Motor & 1 HP 220v WEG	165	41.5/29.5/25.5	41040101750
LV-Z-1050 BU -220v	Blower Unit w/ VFD Motor & 1/2 HP 220v WEG	95	36.5/28/19	41040201050
LV-Z-1750 BU -220v	Blower Unit w/ VFD Motor & 1 HP 220v WEG	125	41.5/29.5/25.5	41040201750

• **LV-Z Units** come complete with powder coated insulated cabinet & fan, Variable Frequency Drive Motor, pre-wired PSB circuit board and WEG Controls pre-installed. Heating (H) Units come with HWC water coils installed.

LV (Lo-Velocity) Fan Coil



LV Fan Coil (H)

Part Name	Description	Wt	Ship. Dim.	Part Number
LV-50 H	Heating Unit w/ PSC Motor	70	37/19/17	10010300050
LV-70 H	Heating Unit w/ PSC Motor	94	37/19/23	10010300070
LV-120 H	Heating Unit w/ PSC Motor	112	37/19/29	10010300120
LV-140 H	Heating Unit w/ PSC Motor	112	37/19/29	10010300140
LV-50 BU	Blower Unit w/ PSC Motor	53	37/19/17	10013300050
LV-70 BU	Blower Unit w/ PSC Motor	74	37/19/23	10013300070
LV-120 BU	Blower Unit w/ PSC Motor	87	37/19/29	10013300120
LV-140 BU	Blower Unit w/ PSC Motor	87	37/19/29	10013300140

• **LV Units** come complete with powder coated insulated cabinet & fan, PSC Motor, pre-wired PSC circuit board c/w heat/cool/dehumidification/constant fan/auxiliary relays, timer circuit. Heating (H) Units come with HWC water coils installed.

JH Series Fan Coil



JH Fan Coil

Part Name	Description	Wt	Ship. Dim.	Part Number
JH-15	JH-15 Heating Unit	30	25/16/13	10010400015
JH-30	JH-30 Heating Unit	35	25/16/13	10010400030
JH-15 EX	JH-15 Blower Unit	25	25/16/13	10013400015
JH-30 EX	JH-30 Blower Unit	30	25/16/13	10013400030
JH-15 NP	JH-15 Northern Pak	32	25/16/13	10011400015
JH-30 NP	JH-30 Northern Pak	37	25/16/13	10011400030
JH-15 NPF	JH-15 Northern Pak - Full	47	25/16/13	10012400015
JH-30 NPF	JH-30 Northern Pak - Full	52	25/16/13	10012400030

- **JH Units** come complete with powder coated insulated cabinet & fan, water coil (except EX units), motor assembly, filter rack and filter.
- **JH EX (Exhaust) Units** come with one 6" transition collar and one 8" transition collar.
- **JH NP (Northern Pak)** Includes - 1/2" Non-Electric Valve Body, Air Sensor for Valve Body, Rheostat, Low Ambient Cut-out, Hanging Strap Kit.
- **JH NPF (Northern Pak - Full)** Includes - 1/2" Non-Electric Valve Body, Air Sensor for Valve Body, Rheostat, Low Ambient Cut-out, Hanging Strap Kit and Fresh Air Damper Section.

Heating/Cooling Coils

RPM-E Pre-Piped Cooling Modules c/w R-410A TXV



RPM-E Cooling Module

Part Name	Description	Wt	Ship. Dim.	Part Number
RPM-E-50 -R410A Pre-Piped Coil	Fits HE-Z/HE-B/HE/HV-50/51, LV-50 (1.5 - 2 Ton)	45	20/15/19	20090200050
RPM-E-70 -R410A Pre-Piped Coil	Fits HE-Z/HE-B/HE/HV-70/71, LV-70 (2.5 - 3 Ton)	54	25/15/19	20090200070
RPM-E-100 -R410A Pre-Piped Coil	Fits HE-Z/HE-B/HE/HV-100/101 (3.5 - 5 Ton)	71	33/15/21	20090200100

• **RPM-E Coil Modules** are **pre-assembled** with drain pan, freeze stat, site glass, two Schrader valves and expansion valve in R410a refrigerant, 2 L shaped brackets for mounting, and 2 - 7/8" FIP drain pan connections (primary/secondary). Expansion valves are heat pump ready with a built in check valve.

RCM Cooling Modules c/w R-410A TXV



RCM Cooling Module

Part Name	Description	Wt	Ship. Dim.	Part Number
RM-30 -R410A TX Cooling Module	Fits JH-15/30			40090200030
RCM-50 -R410A TX Cooling Module	Fits HE-Z/HE-B/HE/HV-50/51, LV-50 (1.5 - 2 Ton)	21	18/11/19	10090200050
RCM-70 -R410A TX Cooling Module	Fits HE-Z/HE-B/HE/HV-70/71, LV-70 (2.5 - 3 Ton)	34	23/11/19	10090200070
RCM-100 -R410A TX Cooling Module	Fits HE-Z/HE-B/HE/HV-100/101 (3.5 - 5 Ton)	47	30/11/20	40090200100

RCM Cooling Modules c/w R-22 TXV

Part Name	Description	Wt	Ship. Dim.	Part Number
RCM-50 -R22 TX Cooling Module	Fits HE-Z/HE/HV-50, LV-50 (1.5 - 2 Ton)	21	18/11/19	10011201050
RCM-70 -R22 TX Cooling Module	Fits HE-Z/HE/HV-70, LV-70 (2.5 - 3 Ton)	34	23/11/19	10011201070
RCM-100 -R22 TX Cooling Module	Fits HE-Z/HE/HV-100 (3.5 - 5 Ton)	47	30/11/20	10011200100

• **RCM Coil Modules** come with drain pan, freeze stat, site glass, two Schrader valves and expansion valve in R-410A or R-22 refrigerant, 2 L shaped brackets for mounting, and 2 - 7/8" FIP drain pan connections (primary/secondary). Expansion valves are heat pump ready with a built in check valve.

WCM Chilled Water Modules

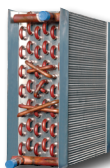


WCM Cooling Module

Part Name	Description	Wt	Ship. Dim.	Part Number
WCM-50 Water Coil	Fits HE-Z/HE-B/HE/HV-50/51, LV-50	26	20/11/19	10010201050
WCM-70/1050 Water Coil	Fits HE-Z/HE-B/HE/HV-70/71, LV-70, LV-E/LV-Z-1050	33	24/11/19	10010201070
WCM-100 Water Coil	Fits HE-Z/HE-B/HE/HV-100/101, LV-120/140, LV-E/LV-Z-1050	44	30/11/20	40090100100
WM-1750 Water Coil	Fits LV-Z/LV-E-1750	55	30/9/23	20090101750

- **WCM/WM Coil Modules** come with drain pan, and 2 L shaped brackets for mounting.
- **WCM Coil Modules** come complete with 2 - 7/8" FIP drain pan connections (primary/secondary).
- **WM Coil Modules** come complete with 1/2" PVC drain pan connections.

Hot Water Coil



HWC Water Coil

Part Name	Description	Wt	Ship. Dim.	Part Number
JH 15/30 Hot Water Coil	Fits JH-15, JH-30	5	20/4/17	10050500030
HWC-50 Hot Water Coil	Fits HE-Z/HE-B/HE/HV-50/51, LV-50	17	16/6/16	20100100050
HWC-52 Hot Water Coil	Fits HE/HV-52	17	22/6/16	20100100052
HWC-70/1050 Hot Water Coil	Fits HE-Z/HE-B/HE/HV-70/71, LV-70, LV-Z/LV-E-1050	22	22/6/16	20100100070
HWC-100 Hot Water Coil	Fits HE-Z/HE-B/HE/HV-100/101, LV-120/140	29	28/6/16	20100100100
HWC-1750 Hot Water Coil	Fits LV-Z/LV-E-1750	45	28/6/22	20100101750

Electric Strip Heaters (ESH)

NOTE: All ESH Coils require their own breaker

Modulating Electrical Strip Heating Coil (VESH) c/w SCR Controls

Part Name	Description	Wt	Ship. Dim.	Part Number
VESH-650-10 kW	Fits HE-Z-50 BU	21	18/13/20	10025654010
VESH-650-15 kW	Fits HE-Z-50 BU	21	18/13/20	10025654015
VESH-750-10 kW	Fits HE-Z-70 BU, LV-Z-1050 BU	21	18/13/20	10025754010
VESH-750-18 kW	Fits HE-Z-70 BU, LV-Z-1050 BU	27	18/13/24	10025754018
VESH-1100-10 kW	Fits HE-Z-100 BU	27	18/13/24	10025114010
VESH-1100-18 kW	Fits HE-Z-100 BU	27	18/13/24	10025114018
VESH-1110-23 kW	Fits HE-Z-100 BU	27	18/13/24	10025114023

• Electrical Strip Heating not available for JH Series or LV-Z/LV-E-1750.

Electrical Strip Heating Coil (ESH)

Part Name	Description	Wt	Ship. Dim.	Part Number
HV-650-5 kW	Fits HE-Z/HE-B/HE/HV-50/51 BU, LV-50 BU	21	18/13/20	10025650005
HV-650-10 kW	Fits HE-Z/HE-B/HE/HV-50/51 BU, LV-50 BU	21	18/13/20	10025650010
HV-650-15 kW	Fits HE-Z/HE-B/HE/HV-50/51 BU, LV-50 BU	21	18/13/20	10025650015
HV-750-5 kW	Fits HE-Z/HE-B/HE/HV-70/71 BU, LV-70 BU, LV-Z/LV-E-1050	27	18/13/24	10025750005
HV-750-10 kW	Fits HE-Z/HE-B/HE/HV-70/71 BU, LV-70 BU, LV-Z/LV-E-1050	27	18/13/24	10025750010
HV-750-15 kW	Fits HE-Z/HE-B/HE/HV-70/71 BU, LV-70 BU, LV-Z/LV-E-1050	27	18/13/24	10025750015
HV-750-18 kW	Fits HE-Z/HE-B/HE/HV-70/71 BU, LV-70 BU, LV-Z/LV-E-1050	27	18/13/24	10025750018
HV-1100-10 kW	Fits HE-Z/HE-B/HE/HV-100/101 BU, LV-120/140 BU	28	18/13/31	10025110010
HV-1100-15 kW	Fits HE-Z/HE-B/HE/HV-100/101 BU, LV-120/140 BU	28	18/13/31	10025110015
HV-1100-18 kW	Fits HE-Z/HE-B/HE/HV-100/101 BU, LV-120/140 BU	28	18/13/31	10025110018
HV-1100-20 kW	Fits HE-Z/HE-B/HE/HV-100/101 BU, LV-120/140 BU	28	18/13/31	10025110020
HV-1100-23 kW	Fits HE-Z/HE-B/HE/HV-100/101 BU, LV-120/140 BU	28	18/13/31	10025110023

• Electrical Strip Heating not available for JH Series or LV-Z/LV-E-1750.

Replacement Parts (ESH)

Part Name	Description	Part Number
Sequencer-TH-34	Sequencer-TH-34 for Electric Strip Heating Coils	10055000001
Relay 30A/24VAC	Relay 30A/24VAC for Electric Strip Heating Coils	10055000002
Heating Element for ESH	Repl. ESH Element, c/w 2 Porcelain Pieces	10055000003
Porcelain Pieces Only for ESH	Repl. Porcelain Pieces for Electric Strip Heating Coil	10055000004
VESH Jumper Bar Assembly	Jumper Bar for Modulating VESH-4 Pole	10055000005



Electric Strip Heater

Flexible Duct

2" Flexible Duct (Sold in Carton Quantities Only)



2" Flexible Duct

Part Name	Description	Wt	Ship. Dim.	Part Number
2" X 10' AFD R4.2 Flex	Assembled 2" Flex Duct R4.2 - 4/box (25 bxs/skid)	12	15/15/25	20020120010
2" X 15' AFD R4.2 Flex	Assembled 2" Flex Duct R4.2 - 4/box (18 bxs/skid)	18	15/15/35	20020120015
2" X 25' UFD R4.2 Flex	Unassembled 2" Flex Duct R4.2 - 1/box (42 bxs/skid)	8	12/13/27	20020120025

2" X 10' AFD R8.4 Flex	Assembled 2" Flex Duct R8.4 - 2/box (25 bxs/skid)	10	15/15/25	20022120010
2" X 15' AFD R8.4 Flex	Assembled 2" Flex Duct R8.4 - 2/box (18 bxs/skid)	15	15/15/35	20022120015
2" X 25' UFD R8.4 Flex	Unassembled 2" Flex Duct R8.4 - 1/box (25 bxs/skid)	12	15/15/35	20022120025

- 2" AFD (Assembled Flex Duct) includes 10' or 15' of flexible duct as specified, two Branch Couplers attached, one Branch Take-Off with Gasket assembly, one Rough-In Kit, one Rough-In Cap, and one Plastic Vent Plate.
- 2" UFD (Unassembled Flex Duct) includes 25' of flexible duct, one 2" UFD Kit (3 Branch Connector Tubes, 6 Branch Couplers and 6 tie wraps).

HE Flexible Duct (Sold in Carton Quantities Only)



HE Flexible Duct

Part Name	Description	Wt	Ship. Dim.	Part Number
HE X 10' AFD R4.2 Flex	Assembled HE Flex Duct R4.2 - 2/box (36 bxs/skid)	8	27/12/13	20062010010
HE X 15' AFD R4.2 Flex	Assembled HE Flex Duct R4.2 - 2/box (25 bxs/skid)	12	26/15/15	20062010015
HE X 25' UFD R4.2 Flex	Unassembled HE Flex Duct R4.2 - 1/box (36 bxs/skid)	8	26/12/13	20062010025

HE X 10' AFD R8.4 Flex	Assembled HE Flex Duct R8.4 - 1/box (36 bxs/skid)	8	27/10/10	20062030010
HE X 15' AFD R8.4 Flex	Assembled HE Flex Duct R8.4 - 1/box (25 bxs/skid)	12	25/15/15	20062030015
HE X 25' UFD R8.4 Flex	Unassembled HE Flex Duct R8.4 - 1/box (18 bxs/skid)	15	35/15/15	20062030025

- HE AFD (Assembled Flex Duct) includes 10' or 15' of flexible duct as specified, two Branch Couplers attached, one Branch Take-Off with Gasket assembly, one Rough-In Kit, one Rough-In Cap, and one Plastic Vent Plate.
- HE UFD (Unassembled Flex Duct) includes 25' of flexible duct, one HE UFD Kit (3 Branch Connector Tubes, 6 Branch Couplers and 6 tie wraps).



Assembled Flex Duct

Unassembled Flex Duct

Plenum Duct Insulsleeve



Insulsleeve

Part Name	Description	Part Number
6" X 10' Insulsleeve R4.2	Insulsleeve (R4.2)	10020100610
8" X 10' Insulsleeve R4.2	Insulsleeve (R4.2)	10020100810
10" X 10' Insulsleeve R4.2	Insulsleeve (R4.2)	10020101010
Part Name	Description	Part Number
6" X 10' Insulsleeve R8.4	Insulsleeve (R8.4)	10022100610
8" X 10' Insulsleeve R8.4	Insulsleeve (R8.4)	10022100810
10" X 10' Insulsleeve R8.4	Insulsleeve (R8.4)	10022101010

- Insulsleeve is a R4.2 (2" insulation) or R8.4 (4" insulation) vapor barrier to be slid over 6", 8" or 10" rigid metal duct.

Flexible Duct Accessories

2" Duct Accessories

Pic #	Part Name	Description	Part Number
1)	2" AFD Kit	Rough-in Boot & Cap, White Plastic Vent Plate, Branch Take-Off (2")	10020110002
2)	2" UFD Kit	3 Branch Connector Tubes, 6 Branch Couplers, 6 Cable Ties (2")	10020110004
3)	2" Vent Plate Collar (8)	Vent Plate Collar (Extender) (2" - 8 per package)	30020110107
4)	2" Branch Take-Off	Branch Take-Off c/w Gasket (2")	10020100106
5)	2" Branch Coupler (8)	Branch Coupler (2" - 8 per package)	30020110203
6)	2" Branch Connector Tube (8)	Branch Connector Tube (2" - 8 per package)	30020100004
7)	2" Rough-In Kit	Rough-in Boot, Rough-in Cap (2")	10020100100
8)	2" Rough-In Cap	Rough-In Cap (2")	10020110302
9)	2" Rough-In Cap (Extended)	Rough-In Cap (2" Extended, Designed for Gypcrete Floors) (2")	10020110303
10)	2" Vent Extender Kit (6)	Branch Connector Tube, Vent Plate Collar (2" - 6 per package)	30020110304
11)	Vent Plate Key	Universal Vent Plate Key (2" and HE)	20072030020
12)	2" Metal Branch Take-Off	Branch Take-Off for Flat-Sided Duct Applications (2")	30072030019

HE Duct Accessories

Pic #	Part Name	Description	Part Number
1)	HE AFD Kit	Rough-in Boot & Cap, White Plastic Vent Plate, Branch Take-Off (HE)	20072030011
2)	HE UFD Kit	3 Branch Connector Tubes, 6 Branch Couplers, 6 Cable Ties (HE)	20072030018
3)	HE Vent Plate Collar (4)	Vent Plate Collar (Extender) (HE - 4 per package)	40072030010
4)	HE Branch Take-Off	Branch Take-Off c/w Gasket (HE)	20072030004
5)	HE Branch Coupler (4)	Branch Coupler (HE - 4 per package)	40072030016
6)	HE Branch Connector Tube (4)	Branch Connector Tube (HE - 4 per package)	40072030012
7)	HE Rough-In Kit	Rough-in Boot, Rough-in Cap (HE)	20072030007
8)	HE Rough-In Cap	Rough-In Cap (HE)	20072030006
9)	HE Rough-In Cap (Extended)	Rough-In Cap (2" Extended, Designed for Gypcrete Floors) (HE)	20072030014
10)	HE Vent Extender Kit (4)	Branch Connector Tube, Vent Plate Collar (HE - 4 per package)	40072030013
11)	Vent Plate Key	Universal Vent Plate Key (2" and HE)	20072030020
12)	HE Metal Branch Take-Off	Branch Take-Off for Flat-Sided Duct Applications (HE)	20072030019
13)	HE Connector Tube - 20ft	4 ft Lengths, 5 per Bundle (HE)	20072030015



Notes:

- Branch Couplers (5) are attached to both ends of our flexible duct, for connecting to a Rough-In Boot (7) at one end and a Branch Take-Off (4) at the other. Two Couplers can also connect to one Branch Connector Tube (6) to extend duct lengths. (To a maximum of 25')
- Vent Extender Kits (10) are used for thicker floor applications by attaching the Branch Connector Tube (6) between the Vent Plate and the Vent Plate Collar (3), which then connects to the Rough-In Boot/Vent Plate.

Vent Plates

2" and HE Decorative Vent Plates




Louvered Insert
(Available upon request to
replace White Plastic Vent
Plate Grid insert))

2" - 20072070011
HE - 20072070012

Our vent plates can be finished, painted, or even wallpapered to match their surroundings. (HE Vent Plates Shown)

2" Vent Plates (2" Collars and Vent Opening - 5" Cover Diameter)

Part Name	Description	Part Number
2" White Plastic	White Plastic c/w Snap-In Grid Insert (2")	20072070010
2" Stainless Steel	Stainless Steel Vent Plate (2")	20072070004
2" Silver Vein	Silver Vein Vent Plate (2")	20072070005
2" Copper Vein	Copper Vein Vent Plate (2")	20072070006
2" Black Wrinkle	Black Wrinkle Vent Plate (2")	20072070007
2" Unfinished Oak	Unfinished Oak Vent Plate (2")	10020110105
2" Unfinished Maple	Unfinished Maple Vent Plate (2")	10020110106
2" Grid Insert	Included with White Plastic Vent Plate (2")	20072070013
2" Louvered Insert	Available Upon Request	20072070011

2" Vent Plates
are slightly
different, shown
below



HE Vent Plates (3" Collars and Vent Opening - 5" Cover Diameter)

Part Name	Description	Part Number
HE White Plastic	White Plastic c/w Snap-In Grid Insert (HE)	20072070008
HE Stainless Steel	Stainless Steel Vent Plate (HE)	20071125011
HE Silver Vein	Silver Vein Vent Plate (HE)	20071125004
HE Copper Vein	Copper Vein Vent Plate (HE)	20071125003
HE Black Wrinkle	Black Wrinkle Vent Plate (HE)	20071125009
HE Unfinished Oak	Unfinished Oak Vent Plate (HE)	20070125001
HE Unfinished Maple	Unfinished Maple Vent Plate (HE)	20070125002
HE Grid Insert	Included with White Plastic Vent Plate (HE)	20072070014
HE Louvered Insert	Available Upon Request	20072070012

Hi-Velocity Air Purification System

Hi-Velocity Air Purification System (HE PS)

Part Name	Description	Wt	Ship. Dim.	Part Number
HE PS c/w Merv 13 Filter	In-Duct Hi-Velocity Air Purification System Fits HE-Z/HE/HV/LV-50/70/100/120/140 LV-Z/LV-E-1050	31	29/21/11	20180100000
HE PS-1750 c/w Merv 13 Filter	In-Duct Hi-Velocity Air Purification System Fits LV-Z/LV-E-1750	36	32/23/14	20180101750



HE PS



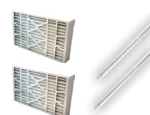
HE PS-1750



MERV 13 Filter



UV Lamps



1 Yr Service Kit



Remote Service Panel



Electronic Lamp Ballast



Transformer



Catalyst

Part Name	Description	Part Number
HE PS MERV 13 Filter	HE PS MERV 13 Replacement Filter - 15 ^{7/8} " x 24 ^{3/4} " x 3 ^{3/4} "	20180100015
HE PS-1750 MERV 13 Filter	HE PS-1750 MERV 13 Replacement Filter 20 ^{1/8} " x 24 ^{3/4} " x 3 ^{3/4} "	20180100012
Optional MERV 14 Filter	HE PS MERV 14 Replacement Filter (HE PS Only) 15 ^{7/8} " x 24 ^{3/4} " x 3 ^{3/4} "	20180100006

Part Name	Description	Part Number
Replacement UV Lamps	HE PS Pkg of 2 UV Lamps for HE PS	20180100001

Part Name	Description	Part Number
HE PS One Yr Srv. Kit	HE PS - Two Merv 13 Filters and Two UV lamps	20180100007
HE PS-1750 One Yr Srv. Kit	HE PS-1750 - Two Merv 13 Filters and Two UV lamps	20180100011

Part Name	Description	Part Number
Remote Service Panel	HE PS Replacement Service Panel	20180100016

Part Name	Description	Part Number
Electronic Lamp Ballast	HE PS Replacement Ballast	20180100003

Part Name	Description	Part Number
12 Volt Transformer	HE PS Replacement Transformer	20180100004

Part Name	Description	Part Number
HE PS Catalyst	HE PS Replacement Titanium/Honeycomb Catalyst	20180100005
HE PS-1750 Catalyst	HE PS-1750 Replacement Titanium/Honeycomb Catalyst	20180100013

Portable Hi-Velocity Air Purification System (HE PS-P20)



HE PS-P20

Part Name	Description	Wt	Ship. Dim.	Part Number
HE PS-P20 c/w Pre-Filter and Hepa Filter Cartridge	Stand-alone Hi-Velocity Air Purification System	23	22/20/10	20180100020

Part Name	Description	Part Number
HE PS-P20 1 Yr Srv. Kit	Replacement Filter Set and UV Lamp for HE PS P-20	20180100014



UV Lamp and Pre-Filter and Hepa Filter

Parts / Accessories

WEG Control Box Upgrades

Please note: The EPC control boards (motor control for all HE Units - Part #2012010111) have been discontinued by the board manufacturer. We have since incorporated the WEG motor controller, which comes in a pre-assembled electrical box with a new circuit board and transformer. These controls come with all HE-Z and LV-Z Units. Purchase of the upgrade for previously released HE Units comes with a 3 year warranty. Unit and voltage required.



**HE-Z/LV-Z
Electrical Box**

Part Name	Description	Wt	Ship. Dim.	Part Number
HE-Z Electrical Box w/ 110v 1/2 HP WEG Controller	For HE/HE-Z-50/51/70/71 LV-E/LV-Z-1050 Units (110v power)	13	19/15/6	40120100006
HE-Z Electrical Box w/ 110v 1 HP WEG Controller	For HE/HE-Z-100/101 Units (110v power)	13	19/15/6	40120100004
HE-Z Electrical Box w/ 220v 1 HP WEG Controller	For HE/HE-Z-50/51/70/71 /100 /101 LV-E/LV-Z-1050 Units (220v power)	13	19/15/6	40120100005

WEG Zoning-Ready
Controller, PSB Circuit
Board, Transformer in
Powder Coated Box

Part Name	Description	Wt	Ship. Dim.	Part Number
LV-Z Electrical Box w/ 110v 1 HP WEG Controller	For LV-E/LV-Z-1750 Units (110v power)	13	19/15/6	40120100003
LV-Z Electrical Box w/ 220v 1 HP WEG Controller	For LV-E/LV-Z-1750 Units (220v power)	13	19/15/6	40120100002

WEG Zoning-Ready
Controller, PSB Circuit
Board, Transformer in
Powder Coated Box



WEG Controller

Part Name	Description	Part Number
110v 1/2 HP WEG Controller	110v WEG - Controller Only	40120100009
110v 1 HP WEG Controller	110v WEG - Controller Only	40120100007
220v 1 HP WEG Controller	220v WEG - Controller Only	40120100008

Zoning Add-On Replacement Parts

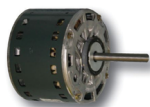


**Damper
Actuator**

Part Name	Description	Part Number
Damper Actuator	Replacement Damper Actuator Motor	40120202001
Zoning Control - 2/3 Zone	Replacement Zoning Control for 2 & 3 Zone Air Handlers	40120202002
Zoning Control - 4 Zone	Replacement Zoning Control for 4 Zone Air Handlers	40120202004
Zoning Control - HE-B Only	Zoning Control for HE-B Air Handlers	40120202005

Variable Frequency Drive Motors

Includes Motor Mounting Bracket



VFD Motor

Part Name	Description	Part Number
VFD Motor	HE-Z/HE-B/HE-50/51/70/71/100/101 Motor (3/4 HP, 1650 RPM)	20160100000
LV-E-1050 Motor	LV-Z/LV-E-1050 Motor (1/3 HP, 1100 RPM)	20160101050
LV-E-1750 Motor	LV-Z/LV-E-1750 Motor (3/4 HP, 1100 RPM)	20160101750

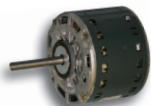


**Motor Mounting
Bracket**

Part Name	Description	Part Number
Motor Mounting Bracket	Fits all Motors	30110100004

PSC Motors

Includes Capacitor and Motor Mounting Bracket



PSC Motor

Part Name	Description	Part Number
HV-50 Motor	HV-50/51/52 Motor, (1/4 HP, 1625 RPM)	10031100050
HV-70 Motor	HV-70/71 Motor (1/3 HP, 1625 RPM)	10031100070
HV-100/LV-140 Motor	HV-100/101 LV-140 Motor (1/2 HP, 1625 RPM)	10031100100
HV-140 Motor	HV-140 Motor (3/4 HP, 1625 RPM)	10031100140
LV-50/70/120 Motor	LV-50/70/120 Motor (1/3 HP, 1075 RPM)	10030200050

Part Name	Description	Part Number
JH-15 Motor & Blower	Motor & Blower Assembly (JH-15)	10030600015
JH-30 Motor & Blower	Motor & Blower Assembly (JH-30)	10030600030

Parts / Accessories

Blowers*

* ALWAYS provide blower part number (or unit serial number) when ordering replacement, to ensure correct sizing.



Blower

Part Name	Description	Part Number
DC 9-4 (50/52) Blower	HE-Z/HE-B/HE-50/51/52 Blower	20150100050
DCT 10-4 (50) Blower	HV-50/51, LV-50 Blower	10030500050
DC 9-7 (70) Blower	HE-Z/HE-B/HE/HV-70/71, LV-70 Blower	20150100070
DC 9-9 (100/1050) Blower	HE-Z/HE-B/HE/HV-100/101, LV-120/140, LV-Z/LV-E-1050 Blower	20150100101
DC 10-10 (1750) Blower	LV-Z/LV-E-1750 Blower	20150301750
DCT 10-7 (140) Blower	HV-140 Blower	10031500140

Electrical Components



PSB Circuit Board



VFD Transformer



EPC Circuit Board

Part Name	Description	Part Number
PSB Circuit Board	Replacement Circuit Board for HE-Z, LV-Z Fan Coils Board Identifier: L564AZ.FLA	40120100001
VFD Transformer	Transformer for all Fan Coils with VFD Motors (HE-Z/HE/LV-Z/LV-E)	20120100030
EPC Circuit Board	Replacement Circuit Board for HE/LV-E Fan Coils Board Identifier: L456C5, L456A5	20120100001
HEB Circuit Board	Replacement Circuit Board for HE-B Fan Coils Board Identifier: L579A1.FLA	40120500001



HEB Circuit Board



PSC Circuit Board

Part Name	Description	Part Number
PSC Circuit Board	Circuit Board for all Fan Coils with PSC Motors (HV/LV) Board Identifier: L176EO.FLA	10020500010
5 AMP Rheostat	5 AMP Rheostat (HV/LV Units)	10020400005
10 AMP Rheostat	10 AMP Rheostat (HV/LV Units)	10020400010
PSC Transformer	PSC Transformer (HV/LV Units)	10020500030



Rheostat



PSC Transformer



Motor Capacitor

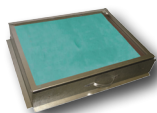


Slo-Blo Fuse

Part Name	Description	Part Number
HV - 50 Capacitor	Capacitor (HV-50/51, LV-50/70/120)	10030300050
HV - 70/100/140 Capacitor	Capacitor (HV-70/71/100/101/140, LV-140)	10030300140
Slo-blo Fuse	2 Amp 250v Slo-blo Fuse (PSC Circuit Boards)	10020500040

Parts / Accessories

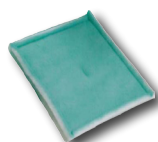
Filter Rack (Comes with Filter)



Filter Rack

Part Name	Description	Wt	Ship. Dim.	Part Number
FR-50 Filter Rack	HE-Z/HE-B/HE/HV-50/51, LV-50 Filter & Rack	4	17/4/20	10020200050
FR-70/1050 Filter Rack	HE-Z/HE-B/HE/HV-70/71, LV-70, LV-Z/LV-E-1050 Filter & Rack	5	21/4/22	10020200070
FR-100 Filter Rack	HE-Z/HE-B/HE/HV-100/101, LV-120/140 Filter & Rack	7	20/4/28	10020200100
FR-1750 Filter Rack	LV-E/LV-Z-1750 Filter & Rack	10	28/5/27	20020201750

Replacement Filters



Replacement Filter

Part Name	Description	Part Number
FR/RA-50 Filter 18" x 14" x 1"	HE-Z/HE-B/HE/HV-50/51, LV-50 Replacement Filter	10050900050
FR/RA-70/1050 Filter 18" x 18" x 1"	HE-Z/HE-B/HE/HV-70/71, LV-70, LV-Z/LV-E-1050 Repl. Filter	10050900070
FR/RA-100 Filter 18" x 24" x 1"	HE-Z/HE-B/HE/HV-100/101, LV-120/140 Replacement Filter	10050900100
FR/RA-140/1750 Filter 24" x 26" x 1"	HV-140, LV-Z/LV-E-1750 Replacement Filter	10050900140
JH-15/30 Filter	JH-15/30 Replacement Filter	10050900030

- Filters are 1 inch thick self sealing moisture resistant Merv 3 Filters, approximately 14% efficient.

Return Air Base



Return Air Base

Part Name	Description	Wt	Ship. Dim.	Part Number
RA-50 Return Air Base	HE-Z/HE-B/HE/HV-50/51, LV-50 Return Air Base	20	20/5/22	40021200050
RA-70/1050 Return Air Base	HE-Z/HE-B/HE/HV-70/71, LV-70, LV-Z/LV-E-1050 Return Air Base	24	20/5/22	40021200070
RA-100 Return Air Base	HE-Z/HE-B/HE/HV-100/101, LV-120/140 Return Air Base	27	27/5/22	40021200100
RA-1750 Return Air Base	LV-Z/LV-E-1750 Return Air Base	33	28/5/24	40021201750

- Return Air Bases are acoustically lined and require field assembly
- Filter Rack & Filter must be purchased separately

Hanging Strap Kit



Hanging Strap Kit

Part Name	Description	Part Number
Hanging Strap Kit	Nylon Hanging Strap Kit	10012401501

JH/LV Components



Fresh Air Damper (JH)



Low Ambient Cut-Out

Part Name	Description	Part Number
1/2" Non-Elec. Valve Body	1/2" Non-Electric Valve Body (JH Series)	10051000012
3/4" Non-Electric Valve Body	3/4" Non- Electric Valve Body (LV Series)	10051000034
1" Non-Electric Valve Body	1" Non-Electric Valve Body (LV Series)	10051000010
Air Sensor for Valve Body	Air Sensor for Valve Body (JH/LV Series)	10051000001
Low Ambient Cut-Out	Low Ambient Cut-Out (JH Series NP, LV Series)	10040500030
JH F/A Damper Section	Fresh Air Damper Section (JH Series)	10012401530
JH Series Damper Motor	Damper Motor (JH Series)	10050300100

Parts / Accessories

Refrigerant Accessories

R-410a Thermal Expansion Valves (Heat Pump Ready)



R-410a TX Valve

Part Name	Description	Part Number
2.0 Ton TX Valve	2.0 Ton Thermal Expansion Valve (R-410a)	10040101420
3.0 Ton TX Valve	3.0 Ton Thermal Expansion Valve (R-410a)	10040101430
4.0 Ton TX Valve	4.0 Ton Thermal Expansion Valve (R-410a)	10040101440
5.0 Ton TX Valve	5.0 Ton Thermal Expansion Valve (R-410a)	10040101450

R-22 Thermal Expansion Valves (Heat Pump Ready)



R-22 TX Valve

Part Name	Description	Part Number
2.0 Ton TX Valve	2.0 Ton Thermal Expansion Valve (R-22)	10040100120
3.0 Ton TX Valve	3.0 Ton Thermal Expansion Valve (R-22)	10040100130
4.0/5.0 Ton TX Valve	4.0/5.0 Ton Thermal Expansion Valve (R-22)	10040100140



Bi-Flow Receiver

Part Name	Description	Part Number
Bi-Flow Receiver	Bi-Flow Add-on for Heat Pump Applications	30180200001
Fixed Temp Freeze Stat	Fixed Temp Freeze Stat (For use w/ RCM/RM/RPM Units)	10040500010
3/8" Sweat Site Glass	3/8" Sweat Site Glass	10040200438
1/4" Access Valve Stem	1/4" Access Valve Stem	10040400014
3/8" Access Valve Stem	3/8" Access Valve Stem	10040400038



Fixed Temp Freeze Stat



Sweat Site Glass (3/8")

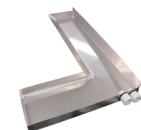


Access Valve Stem (1/4")



Access Valve Stem (3/8")

Part Name	Description	Part Number
RPM-E-50 Drain Pan	Replacement SS Drain Pan for RPM-E-50	20090300050
RPM-E-70 Drain Pan	Replacement SS Drain Pan for RPM-E-70	20090300070
RPM-E-100 Drain Pan	Replacement SS Drain Pan for RPM-E-100	20090300100



RPM-E Drain Pan

Part Name	Description	Part Number
RCM-50 Drain Pan	Replacement Drain Pan c/w 2 pc. Door, fits RCM/WCM-50	20090100050
RCM-70 Drain Pan	Replacement Drain Pan c/w 2 pc. Door, fits RCM/WCM-70	20090100070
RCM-100 Drain Pan	Replacement Drain Pan c/w 2 pc. Door, fits RCM/WCM-100	20090100101
RM-100 Drain Pan	Replacement Casing (w/ Built-In Drain Pan) fits RM-100	20090100100



DHW Heating Circulator

Miscellaneous Items

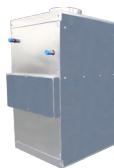
Part Name	Description	Part Number
DHW Heating Circulator	DHW Heating Circulator	10050801542
Replacement Cartridge	Replacement Cartridge for Above	10090301542
Turbo Meter	Turbo Meter (Measures Air Flow for HE-Z/HE/HV)	20180000000



Turbo Meter

HE-Z Builders Series - Zoning Capable

For Multi Unit applications ONLY, factory approval required for order acceptance



HE-Z Builders Series Fan Coil with 110v WEG - Zoning Capable

Part Name	Description	Wt	Ship. Dim.	Part Number
HE-Z-51 H -110v	Heating Unit w/ VFD Motor & 110v WEG	102	37/19/17	41021400051
HE-Z-71 H -110v	Heating Unit w/ VFD Motor & 110v WEG	115	37/19/23	41021400071
HE-Z-101 H -110v	Heating Unit w/ VFD Motor & 110v WEG	131	37/19/29	41021400101
HE-Z-51 BU -110v	Blower Unit w/ VFD Motor & 110v WEG	86	37/19/17	41021200051
HE-Z-71 BU -110v	Blower Unit w/ VFD Motor & 110v WEG	97	37/19/23	41021200071
HE-Z-101 BU -110v	Blower Unit w/ VFD Motor & 110v WEG	112	37/19/29	41021200101

HE-Z Builders Series Fan Coil with 220v WEG - Zoning Capable

Part Name	Description	Wt	Ship. Dim.	Part Number
HE-Z-51 H -220v	Heating Unit w/ VFD Motor & 220v WEG	101	37/19/17	41020400051
HE-Z-71 H -220v	Heating Unit w/ VFD Motor & 220v WEG	114	37/19/23	41020400071
HE-Z-101 H -220v	Heating Unit w/ VFD Motor & 220v WEG	130	37/19/29	41020400101
HE-Z-51 BU -220v	Blower Unit w/ VFD Motor & 220v WEG	85	37/19/17	41020200051
HE-Z-71 BU -220v	Blower Unit w/ VFD Motor & 220v WEG	97	37/19/23	41020200071
HE-Z-101 BU -220v	Blower Unit w/ VFD Motor & 220v WEG	111	37/19/29	41020200101

HE-Z Builders Series Fan Coil w/ 220v WEG - Zoning Capable (Outside North America)

Part Name	Description	Wt	Ship. Dim.	Part Number
HE-Z-51 H -220v ONA	Heating Unit w/ VFD Motor & 220v WEG	101	37/19/17	41020500051
HE-Z-71 H -220v ONA	Heating Unit w/ VFD Motor & 220v WEG	114	37/19/23	41020500071
HE-Z-101 H -220v ONA	Heating Unit w/ VFD Motor & 220v WEG	130	37/19/29	41020500101
HE-Z-51 BU -220v ONA	Blower Unit w/ VFD Motor & 220v WEG	85	37/19/17	41020600051
HE-Z-71 BU -220v ONA	Blower Unit w/ VFD Motor & 220v WEG	97	37/19/23	41020600071
HE-Z-101 BU -220v ONA	Blower Unit w/ VFD Motor & 220v WEG	111	37/19/29	41020600101

All **HE-Z Builders Units** come with galvanized cabinet, Variable Frequency Drive Motor, pre-wired circuit board and WEG Controls pre-installed. Packaged with one universal vent plate key. For replacement parts and accessories, please refer to the standard price list.

Assembled Flexible Duct (Sold in Carton Quantities Only)

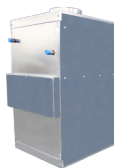
Available for use with Builders Series Units ONLY. For 10' and 15' Flex Duct, refer to Price List.

Part Name	Description	Wt	Ship. Dim.	Part Number
2" X 5' AFD R4.2 (4) Flex	Assembled 2" Flex Duct R4.2 - 4/box	8	27/12/13	20020100005
2" X 5' AFD R8.4 (2) Flex	Assembled 2" Flex Duct R8.4 - 2/box	8	26/10/10	20022100005
Part Name	Description	Wt	Ship. Dim.	Part Number
HE X 5' AFD R4.2 (4) Flex	Assembled HE Flex Duct R4.2 - 4/box	16	25/15/15	20062010005
HE X 5' AFD R8.4 (2) Flex	Assembled HE Flex Duct R8.4 - 2/box	10	25/15/15	20062030005

* AFD Assembled Flex Duct includes 5', 10' or 15' of Flexible Duct as specified, two Branch Couplers attached, one Branch Take Off with Gasket assembly, one Rough-In Kit, one Rough-In Cap and one Plastic Vent Plate.

HE-B Builders Series

For Multi Unit applications ONLY, factory approval required for order acceptance



HE-B Builders Series Fan Coil w 110v WEG

Part Name	Description	Wt	Ship. Dim.	Part Number
HE-B-51 H -110v	Heating Unit w/ VFD Motor & 110v WEG	101	37/19/17	41021600051
HE-B-71 H -110v	Heating Unit w/ VFD Motor & 110v WEG	114	37/19/23	41021600071
HE-B-101 H -110v	Heating Unit w/ VFD Motor & 110v WEG	130	37/19/29	41021600101
HE-B-51 BU -110v	Blower Unit w/ VFD Motor & 110v WEG	85	37/19/17	41020700051
HE-B-71 BU -110v	Blower Unit w/ VFD Motor & 110v WEG	97	37/19/23	41020700071
HE-B-101 BU -110v	Blower Unit w/ VFD Motor & 110v WEG	111	37/19/29	41020700101

HE-B Builders Series Fan Coil w 220v WEG

Part Name	Description	Wt	Ship. Dim.	Part Number
HE-B-51 H -220v	Heating Unit w/ VFD Motor & 220v WEG	101	37/19/17	41020800051
HE-B-71 H -220v	Heating Unit w/ VFD Motor & 220v WEG	114	37/19/23	41020800071
HE-B-101 H -220v	Heating Unit w/ VFD Motor & 220v WEG	130	37/19/29	41020800101
HE-B-51 BU -220v	Blower Unit w/ VFD Motor & 220v WEG	85	37/19/17	41021800051
HE-B-71 BU -220v	Blower Unit w/ VFD Motor & 220v WEG	97	37/19/23	41021800071
HE-B-101 BU -220v	Blower Unit w/ VFD Motor & 220v WEG	111	37/19/29	41021800101

HE-B Builders Series Fan Coil w/ 220v WEG (Outside North America)

Part Name	Description	Wt	Ship. Dim.	Part Number
HE-B-51 H -220v ONA	Heating Unit w/ VFD Motor & 220v WEG	101	37/19/17	41020900051
HE-B-71 H -220v ONA	Heating Unit w/ VFD Motor & 220v WEG	114	37/19/23	41020900071
HE-B-101 H -220v ONA	Heating Unit w/ VFD Motor & 220v WEG	130	37/19/29	41020900101
HE-B-51 BU -220v ONA	Blower Unit w/ VFD Motor & 220v WEG	85	37/19/17	41021900051
HE-B-71 BU -220v ONA	Blower Unit w/ VFD Motor & 220v WEG	97	37/19/23	41021900071
HE-B-101 BU -220v ONA	Blower Unit w/ VFD Motor & 220v WEG	111	37/19/29	41021900101

All **HE-B Builders Units** come with galvanized cabinet, Variable Frequency Drive Motor, pre-wired HEB circuit board and WEG Controls pre-installed. Packaged with one universal vent plate key. For replacement parts and accessories, please refer to the standard price list.

HE-B Control Box Upgrades

Please note: The EPC control boards (motor control for all HE Units - Part #2012010111) have been discontinued by the board manufacturer. We have since incorporated the WEG motor controller, which comes in a pre-assembled electrical box with a new circuit board and transformer. These controls come with all HE-Z and LV-Z Units. Purchase of the upgrade for previously released HE Units comes with a 3 year warranty. Unit and voltage required.

Part Name	Description		Wt	Ship. Dim.	Part Number
HE-B-52 Electrical Box w/ 110v 1/2 HP WEG Controller	For HE-52 Units (110v power)	WEG Non-Zoning Controller, HEB Circuit Board, Transformer in Galvanized Box	13	19/15/6	40120100052
HE-B Electrical Box w/ 110v 1/2 HP WEG Controller	For HE-51/71 Units (110v power)		13	19/15/6	40120500051
HE-B Electrical Box w/ 110v 1 HP WEG Controller	For HE-101 Units (110v power)		13	19/15/6	40120500101
HE-B Electrical Box w/ 220v 1 HP WEG Controller	For HE-51/71/101 (220v power)		13	19/15/6	40120502101

NOTES:

[illegible]

WARRANTY

Energy Saving Products Ltd. is proud to offer a limited warranty. This warranty applies strictly to the first purchaser at wholesale level and only to the fan coil unit and module. It does not include connections, attachments and other products or materials furnished by the installer.

This warranty excludes any damages caused by changes, relocation to, or installation in a new site. This warranty does not cover any defects caused by failure to follow the installation and operating instructions furnished with the fan coil. This warranty does not cover defects caused by failing to adhere to local building codes and following good industry standards. Failure to correctly install the fan coil, or material related to the unit, may result in improper system performance and/or damages and will void this warranty. This warranty does not cover material installed in or exposed to a corrosive environment. This warranty does not cover products subjected to abnormal use, misuse, improper maintenance, or alteration of the product. Using the fan coil and/or module as a source of temporary heating/cooling during construction will void this warranty.

A **Five (5) Year Limited Warranty** is extended on all components in products manufactured exclusively by Energy Saving Products. These components include Motors, WEG Controller, Circuit Boards, Dampers, Zoning Controls, Blowers, Motor & Blower Assemblies, Heating Coils, Chilled Water Coils, and Air Conditioning Coils. **Note: If any product is installed in or exposed to a corrosive environment, warranty will be void.**

A **Three (3) Year Limited Warranty** is extended on Electric Strip Heaters.

Products sold by Energy Saving Products but manufactured by others, will carry the original manufacturer's warranty.

TERMS & CONDITIONS

- Any repair performed under warranty must be approved by Energy Saving Products Ltd. for this warranty to be valid.
- The liability of Energy Saving Products Ltd. is limited to and shall not exceed the cost of pre-approved replacement parts.
- This warranty does not cover shipping costs to and from the factory, labor costs or any other cost associated with the installation of the replacement part.
- Inoperative parts must be returned to Energy Saving Products Ltd. with an ESP RMA Form that includes model, serial number, and a detailed description of the entire problem. Inoperative parts must be returned in testable condition.
- Should there be multiple consecutive failures of a single part, warranty will not be considered until a contractor has contacted Energy Saving Products Ltd. Technical Department for assistance.
- Energy Saving Products Ltd. is not liable for any other damages, personal injury, or any other losses of any nature.

Follow these steps for Service or Repair:

1. Contact the installer of the product or a licensed service company
2. Contact the distributor
3. Contact Energy Saving Products Ltd. Mon-Fri 8 am – 4:30 pm MT 1-888-652-2219

This warranty replaces all other warranties expressed or implied.

www.hi-velocity.com

Energy Saving Products Ltd, established in 1983, manufactures the Hi-Velocity Systems™ product line for residential, commercial and multi-family markets. Our facilities house Administration, Sales, Design, Manufacturing, as well as Research & Development complete with an in-house test lab. Energy Saving Products prides itself on Customer Service and provides design services and contractor support.

For all of your Heating, Cooling and Indoor Air Quality needs, the Hi-Velocity System is the right choice for you!



Small Duct Heating, Cooling and IAQ Systems

Build Smart, Breathe *Easy*

Hi-Velocity HE-Z Fan Coils, *Green* Technology



Phone: 780-453-2093
Fax: 780-453-1932
Toll Free: 1-888-652-2219

www.hi-velocity.com