



# Parts List

October 2013

*Featuring:*

***Hi-Velocity***  
***Systems***™

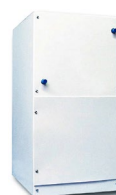
Small Duct High Velocity Heating, Cooling and  
Indoor Air Quality Systems



HE-Z Series High Velocity Fan Coil



LV-Z Series Conventional Replacement



JH Series Space Heating, Make-Up Air



Flexible Mini Duct and Accessories



Hi-Velocity Vent Plate Collection



HE PS Series Air Purification System



HE PS Portable Air Purification System

## Fan Coil Units



**HE-Z Blower Unit (BU)**  
w/ WEG Zoning



**HE-Z Heating Unit (H)**  
w/ WEG Zoning

### HE-Z Units with 220v WEG Zoning Controls

Voltage MUST be specified when ordering. All units come complete with painted insulated cabinet & fan. All Heating (H) Units come with HWC water coils installed.

Part Name	Description	Wt	Ship. Dim.	Part Number
HE-Z-50 H -220v	Heating Unit w/ VFD Motor & 220v WEG	101	37/19/17	41010400050
HE-Z-70 H -220v	Heating Unit w/ VFD Motor & 220v WEG	114	37/19/23	41010400070
HE-Z-100 H -220v	Heating Unit w/ VFD Motor & 220v WEG	130	37/19/29	41010400100
HE-Z-50 BU -220v	Blower Unit w/ VFD Motor & 220v WEG	85	37/19/17	41010200050
HE-Z-70 BU -220v	Blower Unit w/ VFD Motor & 220v WEG	97	37/19/23	41010200070
HE-Z-100 BU -220v	Blower Unit w/ VFD Motor & 220v WEG	111	37/19/29	41010200100

- HE-Z Units come with Variable Frequency Drive Motor, pre-wired circuit board and WEG Zoning Controls pre-installed.
- All HE-Z Units are packaged with one universal vent plate key.

### HE-Z Units with 110v WEG Zoning Controls

Voltage MUST be specified when ordering. All units come complete with painted insulated cabinet & fan. All Heating (H) Units come with HWC water coils installed.

Part Name	Description	Wt	Ship. Dim.	Part Number
HE-Z-50 H -110v	Heating Unit w/ VFD Motor & 110v WEG	102	37/19/17	41011400050
HE-Z-70 H -110v	Heating Unit w/ VFD Motor & 110v WEG	115	37/19/23	41011400070
HE-Z-100 H -110v	Heating Unit w/ VFD Motor & 110v WEG	131	37/19/29	41011400100
HE-Z-50 BU -110v	Blower Unit w/ VFD Motor & 110v WEG	86	37/19/17	41011200050
HE-Z-70 BU -110v	Blower Unit w/ VFD Motor & 110v WEG	98	37/19/23	41011200070
HE-Z-100 BU -110v	Blower Unit w/ VFD Motor & 110v WEG	112	37/19/29	41011200100

- HE-Z Units come with Variable Frequency Drive Motor, pre-wired circuit board and WEG Zoning Controls pre-installed.
- All HE-Z Units are packaged with one universal vent plate key.

### Hi-Velocity HV Units

All units come complete with painted insulated cabinet & fan. All Heating (H) Units come with HWC water coils installed.



Part Name	Description	Wt	Ship. Dim.	Part Number
HV-50 H	Heating Fancoil w/ PSC Motor	78	37/19/17	10010100050
HV-70 H	Heating Fancoil w/ PSC Motor	95	37/19/23	10010100070
HV-100 H	Heating Fancoil w/ PSC Motor	112	37/19/29	10010100100
HV-50 BU	Blower Unit w/ PSC Motor	64	37/19/17	10013100050
HV-70 BU	Blower Unit w/ PSC Motor	74	37/19/23	10013100070
HV-100 BU	Blower Unit w/ PSC Motor	92	37/19/29	10013100100

- HV Units come with PSC Motor, pre-wired circuit board c/w heat/cool/dehumidification/constant fan/auxiliary relays, timer circuit.
- All HV Units are packaged with one universal vent plate key.

## Fan Coil Units

### LV-Z Series Units



LV-Z Fancoil

Part Name	Description	Wt	Ship. Dim.	Part Number
LV-Z-1050 H -220v	Heating Unit w/ VFD Motor & 220v WEG	105	32/19/18	41040101050
LV-Z-1750 H -220v	Heating Unit w/ VFD Motor & 220v WEG	165	38/26.5/24.25	41040101750
LV-Z-1050 BU -220v	Blower Unit w/ VFD Motor & 220v WEG	95	32/19/18	41040201050
LV-Z-1750 BU -220v	Blower Unit w/ VFD Motor & 220v WEG	125	38/26.5/24.25	41040201750
Part Name	Description	Wt	Ship. Dim.	Part Number
LV-Z-1050 H -110v	Heating Unit w/ VFD Motor & 110v WEG	105	32/19/18	41011401050
LV-Z-1750 H -110v	Heating Unit w/ VFD Motor & 110v WEG	165	38/26.5/24.25	41011401750
LV-Z-1050 BU -110v	Blower Unit w/ VFD Motor & 110v WEG	95	32/19/18	41011201050
LV-Z-1750 BU -110v	Blower Unit w/ VFD Motor & 110v WEG	125	38/26.5/24.25	41011201750

• LV-Z Units come with Variable Frequency Drive Motor, pre-wired circuit board and WEG Zoning Controls pre-installed.

### LV (Lo-Velocity) Series Units



LV Fancoil

Part Name	Description	Wt	Ship. Dim.	Part Number
LV-50 H	Heating Fancoil w/ PSC Motor	70	37/19/17	10010300050
LV-70 H	Heating Fancoil w/ PSC Motor	94	37/19/23	10010300070
LV-120 H	Heating Fancoil w/ PSC Motor	112	37/19/29	10010300120
LV-140 H	Heating Fancoil w/ PSC Motor	112	37/19/29	10010300140
LV-50 BU	Blower Unit w/ PSC Motor	53	37/19/17	10013300050
LV-70 BU	Blower Unit w/ PSC Motor	74	37/19/23	10013300070
LV-120 BU	Blower Unit w/ PSC Motor	85	37/19/29	10013300120
LV-140 BU	Blower Unit w/ PSC Motor	87	37/19/29	10013300140

• LV units come complete with motor assembly, and pre-wired circuit board c/w heat/cool/aux. relays.

### JH Series Units



JH Fancoil

Part Name	Description	Wt	Ship. Dim.	Part Number
JH-15	JH-15 Heating Fancoil	30	25/16/13	10010400015
JH-30	JH-30 Heating Fancoil	35	25/16/13	10010400030
JH-15 EX	JH-15 Blower Unit	25	25/16/13	10013400015
JH-30 EX	JH-30 Blower Unit	30	25/16/13	10013400030
JH-15 NP	JH-15 Northern Pak	32	25/16/13	10011400015
JH-30 NP	JH-30 Northern Pak	37	25/16/13	10011400030
JH-15 NPF	JH-15 Full Northern Pak	47	25/16/13	10012400015
JH-30 NPF	JH-30 Full Northern Pak	52	25/16/13	10012400030

• JH units come complete with water coil, motor assembly, filter rack and filter.  
 • JH EX (Exhaust) Units come with motor assembly, one 6" transition collar and one 8" transition collar.  
 • Northern Pak Includes - 1/2" Non-Electric Valve Body, Air Sensor for Valve Body, Rheostat, Low Ambient Cut-out, Hanging Strap Kit  
 • Full Northern Pak Includes - 1/2" Non-Electric Valve Body, Air Sensor for Valve Body, Rheostat, Low Ambient Cut-out, Hanging Strap Kit and Fresh Air Damper Section

## Coils

### RPM-E Pre-Piped Cooling Modules c/w R-410A TXV



**RPM-E Cooling Module**

Part Name	Description	Wt	Ship. Dim.	Part Number
RPM-E-50 Pre-Piped Coil	Fits HE/HE-Z/HV-50, LV-50	45	20/15/19	20090200050
RPM-E-70 Pre-Piped Coil	Fits HE/HE-Z/HV-70, LV-70	54	20/15/19	20090200070
RPM-E-100 Pre-Piped Coil	Fits HE/HE-Z/HV-100	71	33/15/21	20090200100

- RPM-E Modules are **pre-assembled** with drain pan, freeze stat, site glass, two Schrader valves and expansion valve in R410a refrigerant. Expansion valves are heat pump ready with a built in check valve.
- RPM-E coil modules come complete with 2 - 7/8" FIP drain pan connections (primary/secondary).

### RCM/RM Cooling Modules c/w R-410A TXV



**RCM Cooling Module**

Part Name	Description	Wt	Ship. Dim.	Part Number
RCM-50 TX Cooling Module	Fits HE/HE-Z/HV-50, LV-50	21	18/11/19	10090200050
RCM-70 TX Cooling Module	Fits HE/HE-Z/HV-70, LV-70	34	23/11/19	10090200070
RM-100-5 TX Cooling Module	Fits HE/HE-Z/HV-100	42	30/8/20	10090200105

- RCM/RM coil modules come with drain pan, freeze stat, site glass, two Schrader valves and expansion valve in R410a refrigerant. Expansion valves are heat pump ready with a built in check valve.
- RCM coil modules come complete with 2 - 7/8" FIP drain pan connections (primary/secondary).
- RM coil modules come complete with 1/2" PVC drain pan connections.

### RPM-E Pre-Piped Cooling Modules c/w R-22 TXV (Special Order Only, 6-8 week lead time)

Part Name	Description	Wt	Ship. Dim.	Part Number
RPM-E-50 Pre-Piped Coil	Fits HE/HE-Z/HV-50, LV-50	45	20/15/19	20011202050
RPM-E-70 Pre-Piped Coil	Fits HE/HE-Z/HV-70, LV-70	54	20/15/19	20011202070
RPM-E-100 Pre-Piped Coil	Fits HE/HE-Z/HV-100	71	33/15/21	20011202100

### RCM/RM Cooling Modules c/w R-22 TXV (Special Order Only, 6-8 week lead time)

Part Name	Description	Wt	Ship. Dim.	Part Number
RCM-50 TX Cooling Module	Fits HE/HE-Z/HV-50, LV-50	21	18/11/19	10011201050
RCM-70 TX Cooling Module	Fits HE/HE-Z/HV-70, LV-70	34	23/11/19	10011201070
RM-100-5 TX Cooling Module	Fits HE/HE-Z/HV-100	42	30/8/20	10011200105

## Water Coil Modules



**WCM Cooling Module**

Part Name	Description	Wt	Ship. Dim.	Part Number
WCM-50 Water Coil	Fits HE/HE-Z/HV-50, LV-50	27	18/11/19	10010201050
WCM-70/1050 Water Coil	Fits HE/HE-Z/HV-70, LV-70, LV-E/LV-Z-1050	32	23/11/19	10010201070
WM-100/1050 Water Coil	Fits HE/HE-Z/HV-100, LV-120/140, LV-E/LV-Z-1050	38	30/8/20	10010200100
WM-1750 Water Coil	Fits LV-E/LV-Z-1750	49	26/8/23	20090101750

- WCM coil modules come complete with 2 - 7/8" FIP drain pan connections (primary/secondary).
- WM coil modules come complete with 1/2" PVC drain pan connections.

## Coils

### Hot Water Coil



**HWC Water Coil**

Part Name	Description	Wt	Ship. Dim.	Part Number
JH 15/30 Hot Water Coil	Fits JH-15, JH-30	5	17/7/16	10050500030
HWC-50 Hot Water Coil	Fits HE/HE-Z/HV-50, LV-50	17	16/6/16	20100100050
HWC-52 Hot Water Coil	Fits HE/HV-52	17	22/6/16	20100100052
HWC-70/1050 Hot Water Coil	Fits HE/HE-Z/HV-70, LV-70, LV-E/LV-Z-1050	22	22/6/16	20100100070
HWC-100 Hot Water Coil	Fits HE/HE-Z/HV-100, LV-120/140	29	28/6/16	20100100100
HWC-1750 Hot Water Coil	Fits LV-E/LV-Z-1750	45	28/6/22	20100101750

### Electrical Strip Heating Coil (ESH)



**Electric Strip Heater**

Part Name	Description	Wt	Ship. Dim.	Part Number
HV-650-5 KW Elec. Strip Heater	Fits HE/HE-Z/HV-50 BU, LV-50 BU	21	18/13/20	10025650005
HV-650-10 KW Elec. Strip Heater	Fits HE/HE-Z/HV-50 BU, LV-50 BU	21	18/13/20	10025650010
HV-650-15 KW Elec. Strip Heater	Fits HE/HE-Z/HV-50 BU, LV-50 BU	21	18/13/20	10025650015
HV-750-5 KW Elec. Strip Heater	Fits HE/HE-Z/HV-70 BU, LV-70 BU, LV-E/LV-Z-1050	27	18/13/24	10025750005
HV-750-10 KW Elec. Strip Heater	Fits HE/HE-Z/HV-70 BU, LV-70 BU, LV-E/LV-Z-1050	27	18/13/24	10025750010
HV-750-15 KW Elec. Strip Heater	Fits HE/HE-Z/HV-70 BU, LV-70 BU, LV-E/LV-Z-1050	27	18/13/24	10025750015
HV-750-18 KW Elec. Strip Heater	Fits HE/HE-Z/HV-70 BU, LV-70 BU, LV-E/LV-Z-1050	27	18/13/24	10025750018
HV-1100-10 KW Elec. Strip Heater	Fits HE/HE-Z/HV-100 BU, LV-120/140 BU	28	18/13/31	10025110010
HV-1100-15 KW Elec. Strip Heater	Fits HE/HE-Z/HV-100 BU, LV-120/140 BU	28	18/13/31	10025110015
HV-1100-18 KW Elec. Strip Heater	Fits HE/HE-Z/HV-100 BU, LV-120/140 BU	28	18/13/31	10025110018
HV-1100-20 KW Elec. Strip Heater	Fits HE/HE-Z/HV-100 BU, LV-120/140 BU	28	18/13/31	10025110020
HV-1100-23 KW Elec. Strip Heater	Fits HE/HE-Z/HV-100 BU, LV-120/140 BU	28	18/13/31	10025110023

• Electrical Strip Heating not available for JH Series or LV-E-1750.

Part Name	Description	Part Number
Sequencer-TH-34	Sequencer-TH-34 for Electric Strip Heating Coils	10055000001
Relay 30A/24VAC	Relay 30A/24VAC for Electric Strip Heating Coils	10055000002
Heating Element for ESH	Repl. ESH Element, c/w 2 Porcelain Pieces	10055000003
Porcelain Pieces Only for ESH	Repl. Porcelain Pieces for Electric Strip Heating Coil	10055000004

## Flexible Duct

### 2" Flexible Duct (Sold in Carton Quantities Only)



**2" Flexible Duct**

Part Name	Description	Wt	Ship. Dim.	Part Number
2" X 10' AFD R4.2 Flex	Assembled 2" Flex Duct R4.2 - 4/box (25 bxs/skid)	12	15/15/25	20020120010
2" X 15' AFD R4.2 Flex	Assembled 2" Flex Duct R4.2 - 4/box (18 bxs/skid)	18	15/15/35	20020120015
2" X 25' UFD R4.2 Flex	Unassembled 2" Flex Duct R4.2 - 1/box (48 bxs/skid)	8	10/10/26	20020120025
2" X 10' AFD R8.4 Flex	Assembled 2" Flex Duct R8.4 - 2/box (25 bxs/skid)	10	15/15/25	20022120010
2" X 15' AFD R8.4 Flex	Assembled 2" Flex Duct R8.4 - 2/box (18 bxs/skid)	15	15/15/35	20022120015
2" X 25' UFD R8.4 Flex	Unassembled 2" Flex Duct R8.4 - 1/box (25 bxs/skid)	12	15/15/35	20022120025

• 2" AFD (Assembled Flex Duct) includes 10' or 15' of flexible duct as specified plus one foot, two Branch Couplers attached, one Branch Take-Off with Gasket assembly, one Rough-In Kit, one Rough-In Cap, and one Plastic Vent Plate.

• 2" UFD (Unassembled Flex Duct) includes 25' of flexible duct, one 2" UFD Kit (3 Branch Connector Tubes, 6 Branch Couplers and 6 tie wraps).

### HE Flexible Duct (Sold in Carton Quantities Only)

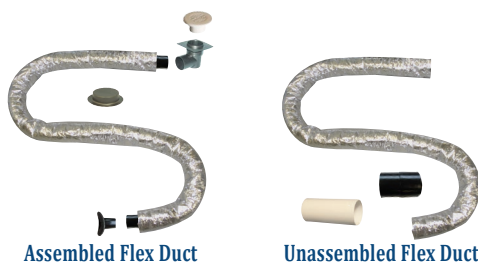


**HE Flexible Duct**

Part Name	Description	Wt	Ship. Dim.	Part Number
HE X 10' AFD R4.2 Flex	Assembled HE Flex Duct R4.2 - 2/box (36 bxs/skid)	8	27/12/13	20062010010
HE X 15' AFD R4.2 Flex	Assembled HE Flex Duct R4.2 - 2/box (25 bxs/skid)	12	26/15/15	20062010015
HE X 25' UFD R4.2 Flex	Unassembled HE Flex Duct R4.2 - 1/box (36 bxs/skid)	8	26/12/13	20062010025
HE X 10' AFD R8.4 Flex	Assembled HE Flex Duct R8.4 - 1/box (36 bxs/skid)	8	27/10/10	20062030010
HE X 15' AFD R8.4 Flex	Assembled HE Flex Duct R8.4 - 1/box (25 bxs/skid)	12	25/15/15	20062030015
HE X 25' UFD R8.4 Flex	Unassembled HE Flex Duct R8.4 - 1/box (18 bxs/skid)	15	35/15/15	20062030025

• HE AFD (Assembled Flex Duct) includes 10' or 15' of flexible duct as specified plus one foot, two Branch Couplers attached, one Branch Take-Off with Gasket assembly, one Rough-In Kit, one Rough-In Cap, and one Plastic Vent Plate.

• HE UFD (Unassembled Flex Duct) includes 25' of flexible duct, one HE UFD Kit (3 Branch Connector Tubes, 6 Branch Couplers and 6 tie wraps).



**Assembled Flex Duct**

**Unassembled Flex Duct**

## Plenum Duct Insulsleeve



**Insulsleeve**

Part Name	Description	Part Number
6" X 10' Insulsleeve R4.2	Insulsleeve (R4.2)	10020100610
8" X 10' Insulsleeve R4.2	Insulsleeve (R4.2)	10020100810
10" X 10' Insulsleeve R4.2	Insulsleeve (R4.2)	10020101010
6" X 10' Insulsleeve R8.4	Insulsleeve (R8.4)	10022100610
8" X 10' Insulsleeve R8.4	Insulsleeve (R8.4)	10022100810
10" X 10' Insulsleeve R8.4	Insulsleeve (R8.4)	10022101010

• Insulsleeve is a R4.2 (2" insulation) or R8.4 (4" insulation) vapor barrier to be slid over 6", 8" or 10" rigid metal duct.



## Duct Accessories

### 2" Duct Accessories

Pic #	Part Name	Description	Part Number
1)	2" AFD Kit	Rough-in Boot & Cap, Wh. Plast. Vent Plate, Br. Take-Off (2")	10020110002
2)	2" UFD Kit	3 Branch Connector Tubes, 6 Branch Couplers, 6 Cable Ties (2")	10020110004
3)	2" Vent Plate Collar (8)	Vent Plate Collar (Extender) (2" - 8 per package)	30020110107
4)	2" Branch Take-Off	Branch Take-Off c/w Gasket (2")	10020100106
5)	2" Branch Coupler (8)	Branch Coupler (2" - 8 per package)	30020110203
6)	2" Branch Connector Tube (8)	Branch Connector Tube (2" - 8 per package)	30020100004
7)	2" Rough-In Kit	Rough-in Boot, Rough-in Cap (2")	10020100100
8)	2" Rough-In Cap	Rough-In Cap (2")	10020110302
9)	2" Rough-In Cap (Extended)	Rough-In Cap (2" Extended, Designed for Gypcrete Floors) (2")	10020110303
10)	2" Vent Extender Kit (6)	Branch Connector Tube, Vent Plate Collar (2" - 6 per package)	30020110304
11)	Vent Plate Key	Universal Vent Plate Key (2" and HE)	20072030020
12)	2" Beauty Ring	Beauty Ring (2")	10020110109

### HE Duct Accessories

Pic #	Part Name	Description	Part Number
1)	HE AFD Kit	Rough-in Boot & Cap, Wh. Plast. Vent Plate, Br. Take-Off (HE)	20072030011
2)	HE UFD Kit	3 Branch Connector Tubes, 6 Branch Couplers, 6 Cable Ties (HE)	20072030018
3)	HE Vent Plate Collar (4)	Vent Plate Collar (Extender) (HE - 4 per package)	40072030010
4)	HE Branch Take-Off	Branch Take-Off c/w Gasket (HE)	20072030004
5)	HE Branch Coupler (4)	Branch Coupler (HE - 4 per package)	40072030016
6)	HE Branch Connector Tube (4)	Branch Connector Tube (HE - 4 per package)	40072030012
7)	HE Rough-In Kit	Rough-in Boot, Rough-in Cap (HE)	20072030007
8)	HE Rough-In Cap	Rough-In Cap (HE)	20072030006
9)	HE Rough-In Cap (Extended)	Rough-In Cap (2" Extended, Designed for Gypcrete Floors) (HE)	20072030014
10)	HE Vent Extender Kit (4)	Branch Connector Tube, Vent Plate Collar (HE - 4 per package)	40072030013
11)	Vent Plate Key	Universal Vent Plate Key (2" and HE)	20072030020
12)	HE Beauty Ring	Beauty Ring for HE Outlets (HE)	20072030017
13)	HE Metal Branch Take-Off	Branch Take-Off for Flat-Sided Duct Applications (HE)	20072030019
14)	HE Connector Tube - 20ft	4 ft Lengths, 5 per Bundle (HE)	20072030015



## Vent Plates

### 2" and HE Decorative Vent Plates



Grid Insert  
(Included with Vent Plate)  
2" - 20072070013 (N/C)  
HE - 20072070014 (N/C)

Louvered Insert  
(Available Upon Request)  
2" - 20072070011 (N/C)  
HE - 20072070012 (N/C)

*Our vent plates can be finished, painted, or even wallpapered to match their surroundings. (HE Vent Plates Shown)*

### 2" Vent Plates (2" Collars and Vent Opening - 4" or 5" Cover Diameter)

Part Name	Description	2" Collar - 4" Cover		2" Collar - 5" Cover	
		Part Number		Part Number	
2" White Plastic	White Plastic c/w Snap-In Grid Insert (2")	n/a		20072070010	
2" Antique Brass	Antique Brass Vent Plate (2")	n/a		20072070003	
2" Stainless Steel	Stainless Steel Vent Plate (2")	20072070015		20072070004	
2" Silver Vein	Silver Vein Vent Plate (2")	10020110114		20072070005	
2" Copper Vein	Copper Vein Vent Plate (2")	10020110113		20072070006	
2" Black Wrinkle	Black Wrinkle Vent Plate (2")	10020100117		20072070007	
2" Unfinished Oak	Unfinished Oak Vent Plate (2")	n/a		10020110105	
2" Unfinished Maple	Unfinished Maple Vent Plate (2")	n/a		10020110106	
2" Grid Insert	Included with White Plastic Vent Plate (2")	20072070013		20072070013	
2" Louvered Insert	Available Upon Request	20072070011		20072070011	

### HE Vent Plates (3" Collars and Vent Opening - 5" Cover Diameter)

Part Name	Description	Part Number
HE White Plastic	White Plastic c/w Snap-In Grid Insert (HE)	20072070008
HE Antique Brass	Antique Brass Vent Plate (HE)	20071125006
HE Stainless Steel	Stainless Steel Vent Plate (HE)	20071125011
HE Silver Vein	Silver Vein Vent Plate (HE)	20071125004
HE Copper Vein	Copper Vein Vent Plate (HE)	20071125003
HE Black Wrinkle	Black Wrinkle Vent Plate (HE)	20071125009
HE Unfinished Oak	Unfinished Oak Vent Plate (HE)	20070125001
HE Unfinished Maple	Unfinished Maple Vent Plate (HE)	20070125002
HE Grid Insert	Included with White Plastic Vent Plate (HE)	20072070014
HE Louvered Insert	Available Upon Request	20072070012



2" Vent Plates are slightly different, shown above



## Hi-Velocity Air Purification System

### Hi-Velocity Air Purification System (HE PS)

Part Name	Description	Wt	Ship. Dim.	Part Number
HE PS c/w Merv 11 Filter	In-Duct Hi-Velocity Air Purification System Fits HE/HE-Z/HV-50, HE/HE-Z/HV-70, HE/HE-Z/ HV-100, LV-E-1050	31	29/21/11	20180100000
HE PS-1750 c/w Merv 11 Filter	In-Duct Hi-Velocity Air Purification System Fits LV-E/LV-Z-1750	36	32/23/14	20180101750



**HE PS**



**HE PS-1750**

Part Name	Description	Part Number
HE PS MERV 11 Filter	HE PS MERV 11 Replacement Filter	20180100002
HE PS-1750 MERV 11 Filter	HE PS-1750 MERV 11 Replacement Filter	20180100012
Optional MERV 13 Filter	LEEDS Certified, Special Order Only	20180100015
Optional MERV 14 Filter	HE PS MERV 14 Replacement Filter	20180100006

Part Name	Description	Part Number
Replacement UV Lamps	HE PS Pkg of 2 UV Lamps for HE PS	20180100001

Part Name	Description	Part Number
HE PS One Yr Srvc. Kit	HE PS - Two Merv 11 Filters and Two UV lamps	20180100007
HE PS-1750 One Yr Srvc. Kit	HE PS-1750 Two Merv 11 Filters and Two UV lamps	20180100011

Part Name	Description	Part Number
Remote Service Panel	HE PS Replacement Service Panel	20180100016

Part Name	Description	Part Number
Electronic Lamp Ballast	HE PS Replacement Ballast	20180100003

Part Name	Description	Part Number
12 Volt Transformer	HE PS Replacement Transformer	20180100004

Part Name	Description	Part Number
HE PS Catalyst	HE PS Replacement Titanium/Honeycomb Catalyst	20180100005
HE PS-1750 Catalyst	HE PS-1750 Replacement Titanium/Honeycomb Catalyst	20180100013

### Portable Hi-Velocity Air Purification System (HE PS-P20)

Part Name	Description	Wt	Ship. Dim.	Part Number
HE PS-P20 c/w Pre-Filter and Hepa Filter Cartridge	Stand-alone Hi-Velocity Air Purification System	23	22/20/10	20180100020

Part Name	Description	Part Number
HE PS-P20 1 Yr Srvc. Kit	Replacement Filter Set and UV Lamp for HE PS P-20	20180100014



**MERV 11 Filter**



**UV Lamps**



**1 Yr Service Kit**



**Remote Service Panel**



**Electronic Lamp Ballast**



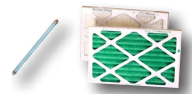
**Transformer**



**Catalyst**



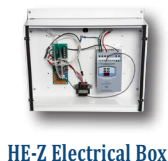
**HE PS-P20**



**UV Lamp  
Pre-Filter  
and Hepa Filter**

## Add-Ons and Accessories

### HE-Z Zoning Upgrades



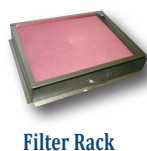
Part Name	Description	Wt	Ship. Dim.	Part Number
HE-Z Electrical Box w/ 110v 1 HP WEG Controller	HE-Z External Electrical Box c/w 110v 1 HP WEG Controller, PSB Circuit Board, Transformer	13	19/15/6	40120100004
HE-Z Electrical Box w/ 220v 1 HP WEG Controller	HE-Z External Electrical Box c/w 220v 1 HP WEG Controller, PSB Circuit Board, Transformer	13	19/15/6	40120100005
HE-Z Electrical Box w/ 110v 1/2 HP WEG Controller	HE-Z External Electrical Box c/w 110v 1/2 HP WEG Controller, PSB Circuit Board, Transformer	13	19/15/6	40120100006



Part Name	Description	Part Number
220v 1 HP WEG Controller	220v WEG - Controller Only	40120100008
110v 1 HP WEG Controller	110v WEG - Controller Only	40120100007
110v 1/2 HP WEG Controller	110v WEG - Controller Only	40120100009
PWM Hose Kit	Replacement Hose Kit for PWM Controller	20120200114
PWM Circuit Box	Replacement PWM Circuit Box c/w 1/4" Hose Connections	20120200113



### Filter Rack (Comes with Filter)



Part Name	Description	Wt	Ship. Dim.	Part Number
FR-50 Filter Rack	HE/HE-Z/HV-50, LV-50 Filter & Rack	4	17/4/20	10020200050
FR-70/1050 Filter Rack	HE/HE-Z/HV-70, LV-70, LV-E/LV-Z-1050 Filter & Rack	5	21/4/22	10020200070
FR-100 Filter Rack	HE/HE-Z/HV-100, LV-120/140 Filter & Rack	7	20/4/28	10020200100
FR-1750 Filter Rack	LV-E/LV-Z-1750 Filter & Rack	10	28/5/27	20020201750



### Return Air Base

Part Name	Description	Wt	Ship. Dim.	Part Number
RA-50 Return Air Base	HE/HE-Z/HV-50, LV-50 Return Air Base	20	20/5/22	40021200050
RA-70/1050 Return Air Base	HE/HE-Z/HV-70, LV-70, LV-E/LV-Z-1050 Return Air Base	24	20/5/22	40021200070
RA-100 Return Air Base	HE/HE-Z/HV-100, LV-120/140 Return Air Base	27	27/5/22	40021200100
RA-1750 Return Air Base	LV-E/LV-Z-1750 Return Air Base	33	28/5/24	40021201750

- Return Air Bases are acoustically lined and require field assembly
- Filter Rack & Filter must be purchased separately

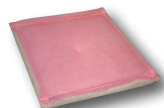


### Hanging Strap Kit

Part Name	Description	Part Number
Hanging Strap Kit	Nylon Hanging Strap Kit	10012401501

## Replacement Parts

### Replacement Filters



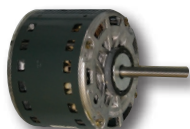
Replacement Filter

Part Name	Description	Ship. Dim.	Part Number
FR/RA-50 Filter	HE/HE-Z/HV-50, LV-50 Replacement Filter	14/1/18	10050900050
FR/RA-70/1050 Filter	HE/HE-Z/HV-70, LV-70, LV-E/LV-Z-1050 Replacement Filter	18/1/18	10050900070
FR/RA-100 Filter	HE/HE-Z/HV-100, LV-120/140 Replacement Filter	18/1/24	10050900100
FR/RA-140/1750 Filter	HV-140, LV-E/LV-Z-1750 Replacement Filter	24/1/26	10050900140
JH-15/30 Filter	JH-15/30 Replacement Filter	10.5/1/11	10050900030

• Filters are 1 inch thick, 3 medium filters, approximately 14% efficient.

### Variable Frequency Drive Motors

Includes Motor Mounting Bracket



VFD Motor

Part Name	Description	Part Number
VFD Motor	HE/HE-Z-50/70/100 Motor (3/4 HP, 310/530/720w)	20160100000
LV-E-1050 Motor	LV-E/LV-Z-1050 Motor (1/3 HP, 515w)	20160101050
LV-E-1750 Motor	LV-E/LV-Z-1750 Motor (3/4 HP, 695w)	20160101750



Part Name	Description	Part Number
Motor Mounting Bracket	Fits all Motors	30110100004

### PSC Motors

Includes Capacitor and Motor Mounting Bracket



PSC Motor

Part Name	Description	Part Number
HV-50 Motor	HV-50/51/52 Motor, (1/4 HP, 1625 RPM)	10031100050
HV-70 Motor	HV-70/71 Motor (1/3 HP, 1625 RPM)	10031100070
HV-100 Motor	HV-100/101 LV-140 Motor (1/2 HP, 1625 RPM)	10031100100
HV-140 Motor	HV-140 Motor (3/4 HP, 1625 RPM)	10031100140
LV-50/70/120 Motor	LV-50/70/120 Motor (1/3 HP, 1075 RPM)	10030200050

Part Name	Description	Part Number
JH-15 Motor & Blower	Motor & Blower Assembly (JH-15)	10030600015
JH-30 Motor & Blower	Motor & Blower Assembly (JH-30)	10030600030

### Blowers\*



Blower

Part Name	Description	Part Number
HE-50 Blower	HE/HE-Z/HV-50/51/52 Blower	20150100050
LV-50 Blower	LV-50 Blower	10030500050
HE-70 Blower	HE/HE-Z/HV-70/71, LV-70 Blower	20150100070
HE-100/1050 Blower	HE/HE-Z/HV-100/101, LV-120/140, LV-E-1050 Blower	20150100101
LV-E-1750 Blower	LV-E/LV-Z-1750 Blower	20150301750
HV-140 Blower	HV-140 Blower	10031500140

\* Please provide unit serial # or blower part # when ordering replacement, to ensure correct sizing.

## Replacement Parts

### Electrical Components



PSB Circuit Board



VFD Transformer



EPC Circuit Board



EPC Control Board



PSC Circuit Board



Rheostat



PSC Transformer



Motor Capacitor



Slo-Blo Fuse



JH Supply Collar



Fresh Air Damper (JH)



Low Ambient Cut-Out

Part Name	Description	Part Number
PSB Circuit Board	Replacement Circuit Board for HE-Z, LV-Z Fan Coils	40120100001
VFD Transformer	Transformer for all fan coils with VFD Motors (HE/HE-Z/LV-E)	20120100030
EPC Circuit Board	Replacement Circuit Board for HE/LV-E Fan Coils	20120100001
EPC Control Board	Replacement Control Board for HE/LV-E Fan Coils	20120100111

Part Name	Description	Part Number
PSC Circuit Board	Circuit Board for all fan coils with PSC Motors (HV/LV)	10020500010
5 AMP Rheostat	5 AMP Rheostat (HV/LV Units)	10020400005
10 AMP Rheostat	10 AMP Rheostat (HV/LV Units)	10020400010
PSC Transformer	PSC Transformer (HV/LV Units)	10020500030

Part Name	Description	Part Number
HV - 50 Capacitor	Capacitor (HV-50, LV-50/70/120)	10030300050
HV - 70/100/140 Capacitor	Capacitor (HV-70/100/140, LV-140)	10030300140
Slo-blo Fuse	Slo-blo Fuse (All Circuit Boards)	10020500040

### JH/LV Components

Part Name	Description	Part Number
1/2" Non-Elec. Valve Body	1/2" Non-Electric Valve Body	10051000012
3/4" Non-Electric Valve Body	3/4" Non- Electric Valve Body	10051000034
1" Non-Electric Valve Body	1" Non-Electric Valve Body	10051000010
Air Sensor for Valve Body	Air Sensor for Valve Body	10051000001
JH Series 6" Supply Collar	6" Supply Collar for JH Series	10050300196
JH Series 8" Supply Collar	8" Supply Collar for JH Series	10050300198
JH Series 6" Return Collar	6" Return Collar for JH Series	10050300186
JH Series 8" Return Collar	8" Return Collar for JH Series	10050300188
JH Series Directional Vanes (4)	Directional Vanes for JH Series (set of 4)	10050300422
JH F/A Damper Section	Fresh Air Damper Section for JH Series	10012401530
JH Series Damper Motor	Damper Motor for JH Series Fan Coil	10050300100
Low Ambient Cut-Out	Low Ambient Cut-Out for JH NP	10040500030

## Replacement Parts

### Refrigerant Components

#### R-410a Thermal Expansion Valves (Heat Pump Ready)



**R-410a TX Valve**

Part Name	Description	Part Number
2.0 Ton TX Valve	2.0 Ton Thermal Expansion Valve (R-410a)	10040101420
3.0 Ton TX Valve	3.0 Ton Thermal Expansion Valve (R-410a)	10040101430
4.0 Ton TX Valve	4.0 Ton Thermal Expansion Valve (R-410a)	10040101440
5.0 Ton TX Valve	5.0 Ton Thermal Expansion Valve (R-410a)	10040101450

#### R-22 Thermal Expansion Valves (Heat Pump Ready, **Special Order Only**)



**R-22 TX Valve**

Part Name	Description	Part Number
2.0 Ton TX Valve	2.0 Ton Thermal Expansion Valve (R-22)	10040100120
3.0 Ton TX Valve	3.0 Ton Thermal Expansion Valve (R-22)	10040100130
4.0 Ton TX Valve	4.0 Ton Thermal Expansion Valve (R-22)	10040100140
5.0 Ton TX Valve	5.0 Ton Thermal Expansion Valve (R-22)	10040100150



**Bi-Flow Receiver**

Part Name	Description	Part Number
Bi-Flow Receiver	Bi-Flow Add-on for Heat Pump Applications	30180200001
Fixed Temp Freeze Stat	Fixed Temp Freeze Stat (HE/HE-Z/HV/LV/LV-E/LV-Z Units)	10040500010
3/8" Sweat Site Glass	3/8" Sweat Site Glass	10040200438
1/4" Access Valve Stem	1/4" Access Valve Stem	10040400014
3/8" Access Valve Stem	3/8" Access Valve Stem	10040400038



**Fixed Temp Freeze Stat**



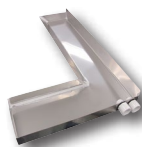
**Sweat Site Glass (3/8")**



**Access Valve Stem (1/4")**



**Access Valve Stem (3/8")**



**RPM-E Drain Pan**

Part Name	Description	Part Number
RPM-E-50 Drain Pan	Replacement SS Drain Pan for RPM-E-50	20090300050
RPM-E-70 Drain Pan	Replacement SS Drain Pan for RPM-E-70	20090300070
RPM-E-100 Drain Pan	Replacement SS Drain Pan for RPM-E-100	20090300100

Part Name	Description	Part Number
RCM-50 Drain Pan	Replacement Drain Pan c/w 2 pc. Door, fits RCM-50/WCM-50	20090100050
RCM-70 Drain Pan	Replacement Drain Pan c/w 2 pc. Door, fits RCM-70/WCM-70	20090100070
RM-100 Drain Pan	Replacement Casing (w/ Built-In Drain Pan) fits RM-100	20090100100



**DHW Heating Circulator**

### Miscellaneous Items



**Turbo Meter**

Part Name	Description	Part Number
DHW Heating Circulator	DHW Heating Circulator	10050801542
Replacement Cartridge	Replacement Cartridge for Above	10090301542
Turbo Meter	Turbo Meter (Measures Air Flow for HE/HE-Z/HV)	20180000000

• Serial Number and Model Number must be supplied when ordering replacement parts.



## Builders Series Units

### HE-Z Builders Series Units with 220v WEG Zoning Controls

Part Name	Description	Wt	Ship. Dim.	Part Number
HE-Z-51 H -220v	Heating Unit w/ VFD Motor & 220v WEG	101	37/19/17	41020400051
HE-Z-52 H -220v	N/A			
HE-Z-71 H -220v	Heating Unit w/ VFD Motor & 220v WEG	114	37/19/23	41020400071
HE-Z-101 H -220v	Heating Unit w/ VFD Motor & 220v WEG	130	37/19/29	41020400101
HE-Z-51 BU -220v	Blower Unit w/ VFD Motor & 220v WEG	85	37/19/17	41020200051
HE-Z-52 BU -220v	N/A			
HE-Z-71 BU -220v	Blower Unit w/ VFD Motor & 220v WEG	97	37/19/23	41020200071
HE-Z-101 BU -220v	Blower Unit w/ VFD Motor & 220v WEG	111	37/19/29	41020200101

### HE-Z Builders Series Units with 110v WEG Zoning Controls

Part Name	Description	Wt	Ship. Dim.	Part Number
HE-Z-51 H -110v	Heating Unit w/ VFD Motor & 110v WEG	102	37/19/17	41021400051
HE-Z-52 H -110v	N/A			
HE-Z-71 H -110v	Heating Unit w/ VFD Motor & 110v WEG	115	37/19/23	41021400071
HE-Z-101 H -110v	Heating Unit w/ VFD Motor & 110v WEG	131	37/19/29	41021400101
HE-Z-51 BU -110v	Blower Unit w/ VFD Motor & 110v WEG	86	37/19/17	41021200051
HE-Z-52 BU -110v	N/A			
HE-Z-71 BU -110v	Blower Unit w/ VFD Motor & 110v WEG	97	37/19/23	41021200071
HE-Z-101 BU -110v	Blower Unit w/ VFD Motor & 110v WEG	112	37/19/29	41021200101

- Builders Series Units are for Multi Unit applications ONLY, factory approval required for order acceptance.
- HE-Z Builders Units come with galvanized cabinet, Variable Frequency Drive Motor, pre-wired circuit board and WEG Zoning Controls pre-installed.
- All HE-Z Units are packaged with one universal vent plate key.
- For replacement parts and accessories, please refer to the standard price list.

### Assembled Flexible Duct (Sold in Carton Quantities Only)

Available for use with Builders Series Units ONLY.  
For 10' and 15' Flex Duct, refer to Price List.

Part Name	Description	Wt	Ship. Dim.	Part Number
2" X 5' AFD R4.2 Flex	Assembled 2" Flex Duct R4.2 - 4/box (36 boxes/skid)	8	27/12/13	20020100005
2" X 5' AFD R8.4 Flex	Assembled 2" Flex Duct R8.4 - 2/box (36 boxes/skid)	8	10/10/26	20022100005
HE X 5' AFD R4.2 Flex	Assembled HE Flex Duct (1/box) R4.2	N/A	N/A	20062010005
HE X 5' AFD R8.4 Flex	Assembled HE Flex Duct (1/box) R4.2	N/A	N/A	20062030005

- AFD Assembled Flex Duct includes 5', 10' or 15' of Flexible Duct as specified plus one foot, two Branch Couplers attached, one Branch Take Off with Gasket assembly, one Rough-In Kit, one Rough-In Cap and one Plastic Vent Plate.

## WARRANTY

**One year limited warranty.** The Heating Coil (heat exchanger), Air Conditioning Coil, Chilled Water Coil, Blower and PSC motor and electrical components (HV Units) are free from defects in workmanship for one year plus a six month shelf life (18 months in total) from date of purchase.

**Three year limited warranty.** The VFD Motor, WEG Controller and PSB Circuit Board (HE-Z Units) and the VFD Motor, EPC Controller, EPC Circuit Board and PWM Control (HE Units) are free from defects in workmanship for three years plus a six month shelf life (42 months in total) from date of purchase.

**Two year limited warranty.** The Electric Strip Heater is free from defects in workmanship for two years plus a six month self life (30 months in total) from date of purchase.

This warranty applies strictly to the first purchaser and only to the fan coil unit. It does not include connections, attachments and other products or materials furnished by the installer. This warranty excludes any damages caused by changes, relocation to, or installation in a new site. This warranty does not cover any defects caused by failure to follow the installation and operating instructions furnished with the fan coil. This warranty does not cover defects caused by failing to adhere to local building codes and following good industry standards. Failure to correctly install the fan coil, or material related to the unit, may result in improper system performance and/or damages and will void this warranty. Using the fan coil as a source of temporary heating/cooling during construction, will void this warranty.

## Terms and Conditions

- Any repair performed under warranty must be approved by Energy Saving Products Ltd. for this warranty to be valid.
- The manufacturer is not liable for any other damages, personal injury, or any other losses of any nature.
- The liability of the manufacturer is limited to and shall not exceed the cost of pre-approved replacement parts and shall not include transportation to and from the factory, and field labour.
- Inoperative parts must be returned with serial number, purchase date, and a detailed description of the entire problem with an ESP RMA Form.
- This warranty replaces all other warranties expressed or implied.

## Disclaimer

*Energy Saving Products Ltd. reserves the right to discontinue, make changes to, and add improvements upon its products at any time without public notice or obligation. The descriptions and specifications contained in this manual were in effect at printing. Some illustrations may not be applicable to your unit.*

Energy Saving Products Ltd., established in 1983, manufactures the Hi-Velocity Systems™ product line for residential, commercial and multi-family markets. Our facilities house Administration, Sales, Design, Manufacturing, as well as Research & Development complete with an in-house test lab. Energy Saving Products prides itself on Customer Service and provides design services and contractor support.



## Build Smart, Breathe *Easy*

Hi-Velocity Fan Coils, **Green** Technology



Phone: 780-453-2093

Fax: 780-453-1932

Toll Free: 1-888-652-2219

*[www.hi-velocity.com](http://www.hi-velocity.com)*