

VP512 Unit Vent Pneumatic Control Valve



A normally open, single seated, straight-through or angle globe valve used for proportional control of steam or hot water in unit ventilator applications. Replacement devices are available for Johnson, Powers, Robertshaw, Barber-Colman, and older Honeywell devices.

- Equal percentage, high lift throttling guide provides accurate control over wide load variations.
- Molded replaceable composition disc for tight shut-off.
- Replaceable brass seat.
- Self-adjusting, spring-loaded Teflon® packing.
- Back-seating allows repacking without shutting down or draining system.
- Rotatable actuator for aligning air connection with control air piping.
- Integral union connection to simplify installation and service.

Valve Type: Globe Valve

Body Pressure: 150 psi

Air Connections: Dual barbed for 5/32 in. or 1/4 in. plastic tubing

Valve Action: Proportional Normally Open

Controlled Medium: Steam; Water

Type of End Connection: Outlet - External NPT Union;
Inlet - Internal NPT

Operating Humidity Range (% RH): 5 to 95% RH

Temperature Range: For Water: 115 F to 240 F; For
Steam: 212 F to 275 F

Maximum Temperature Differential: For Water: 140 F

Maximum Actuator Temperature: 160 F

Maximum Diaphragm Pressure: 25 psi (172 kPa)

Accessories:

312817AA-Actuator Assembly, 3 to 8 psi, 21 to 55 kPa, and 1/2 in. stroke.

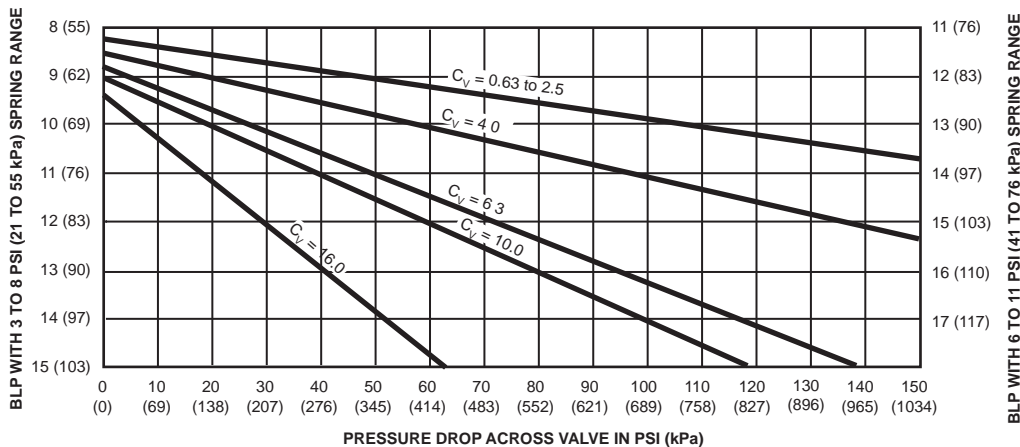
312817AB-Actuator Assembly, 6 to 11 psi, 41 to 76 kPa and 1/2 in. stroke.

Replacement Parts:

14002863-001-Valve rebuild kit for 3/4 to 1 1/4 in valves with Cv of 6.3 or 10

Product Number	End Connection Size		Capacity		Close-off Ratings at Branch Line Pressure	Spring Range		Body Pattern
	(inch)	(mm)	(Cv)	(Kv)		(psi)	(kPa)	
VP512A1726/U	1 in.	25 mm	10 Cv	8.57 Kv	78 psi at 13 psi	3 psi to 8 psi	21 kPa to 55 kPa	Two-way, Straight-through
VP512A1742/U	1 in.	25 mm	10 Cv	8.57 Kv	78 psi at 13 psi	3 psi to 8 psi	21 kPa to 55 kPa	Two-way, Right Angle
VP512A1767/U	1 1/4 in.	32 mm	16 Cv	13.7 Kv	40 psi at 13 psi	3 psi to 8 psi	21 kPa to 55 kPa	Two-way, Straight-through
VP512A1783/U	1 1/4 in.	32 mm	16 Cv	13.7 Kv	40 psi at 13 psi	3 psi to 8 psi	21 kPa to 55 kPa	Two-way, Right Angle

Close-off Ratings at various Branchline Pressures

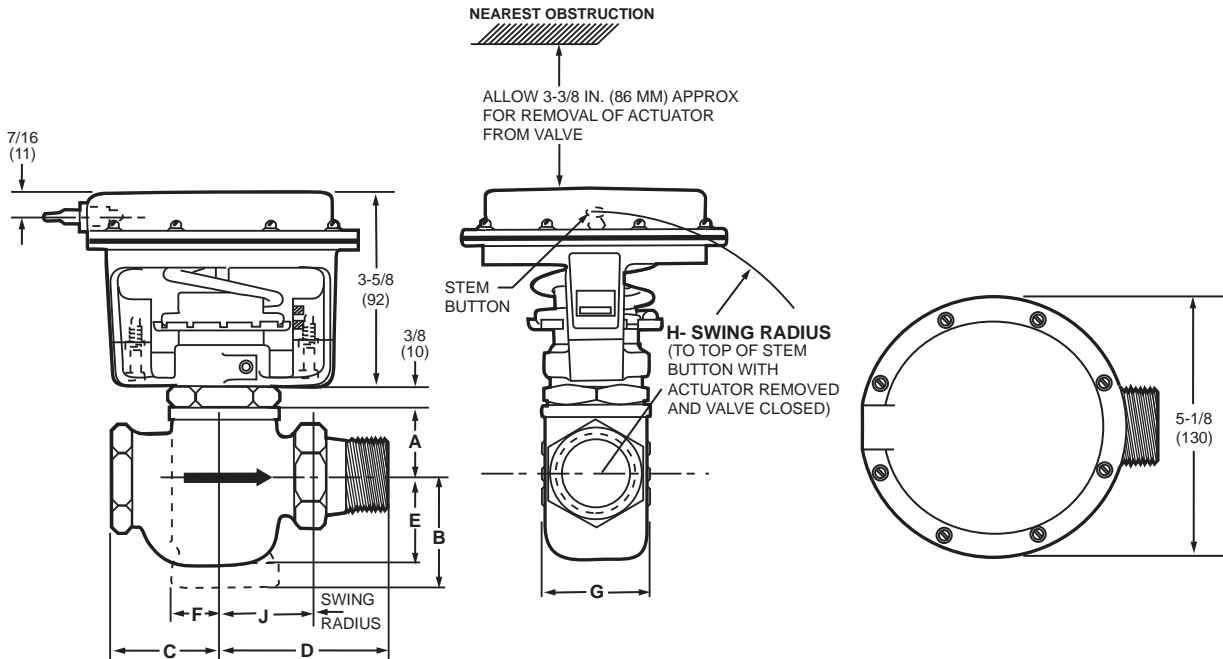


CLOSE-OFF RATINGS AT VARIOUS BRANCH LINE PRESSURES

M18956B

Pneumatic Valves

Dimensions in inches (millimeters)



VALVE SIZE	BODY TYPE	A	B	C	D	E	F	G	H	J
1	STRAIGHT	1-3/8 (35)	---	2-1/4 (57)	3 (76)	1-5/8 (41)	---	1-31/32 (50)	4-1/2 (114)	---
	ANGLE	1-3/8 (35)	2-1/8 (54)	---	3 (76)	---	1-1/16 (27)	1-31/32 (50)	---	1-29/32 (48)
1 1/4	STRAIGHT	1-9/16 (40)	---	2-1/2 (64)	3-3/4 (95)	1-1/2 (38)	---	2-9/16 (65)	4-13/16 (122)	---
	ANGLE	1-9/16 (40)	2-1/8 (54)	---	3-3/4 (95)	---	1-3/16 (30)	2-9/16 (65)	---	2-15/32 (63)
1 1/2	STRAIGHT	1-11/16 (43)	---	2-7/8 (73)	4-1/4 (108)	1-3/8 (35)	---	3-9/32 (83)	5-5/32 (131)	---
	ANGLE	1-11/16 (43)	2-1/8 (54)	---	4-1/4 (108)	---	1-3/8 (35)	3-9/32 (83)	---	2-15/16 (75)

M18805A