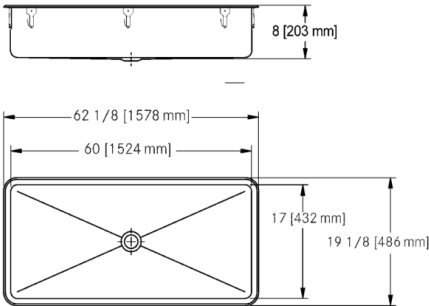


# ART60-1 Art room sink, no ledge

## MODEL RANGE: COMMERCIAL SINKS | ART60-1

Utility sinks | Topmount sinks



Single compartment self rimming topmount sink less faucet ledge. 18 gauge (1.2 mm), type 304 (CNS 18/10) stainless steel. Exposed surfaces are #4 satin finished. Undercoated to reduce condensation and resonance. Includes waste fitting, factory applied rim seal, and factory installed EZ TORQUE™ fasteners. Certified to ASME A112.19.3-2008 / CSA B45.4-08. Centre waste location. Includes 3 1/2" (89 mm) crumb cup strainer with 1 1/2" (DN38) brass tailpiece

19 1/8 x 62 1/8" Overall. 17 x 60 x 8" Bowl. (FB x LR x D).  
486 x 1578 mm Overall. 432 x 1524 x 203 mm Bowl. (FB x LR x D).

Technical data	
Bowl height	8 inch
Bowl depth	17 "
Bowl width	60 "
Overall depth	19 1/8 "
Overall width	62 1/8 "
Material	Stainless steel
Material code	1 4301 Chrome Nickel steel V2A
Tailor made	No
Tap ledge	No
Waste hole position	Center
Bowl finish	Satin finish
Number of bowls	1.00000
Overflow	No
Number of tap holes	0.00000
Type of waste kit	3 1/2" crump cup strainer
Type of basin	Single compartment

PROJECT INFORMATION	
Item Location	
Project Number	
Quote Number	
Notes	
ENGINEER'S APPROVAL	

