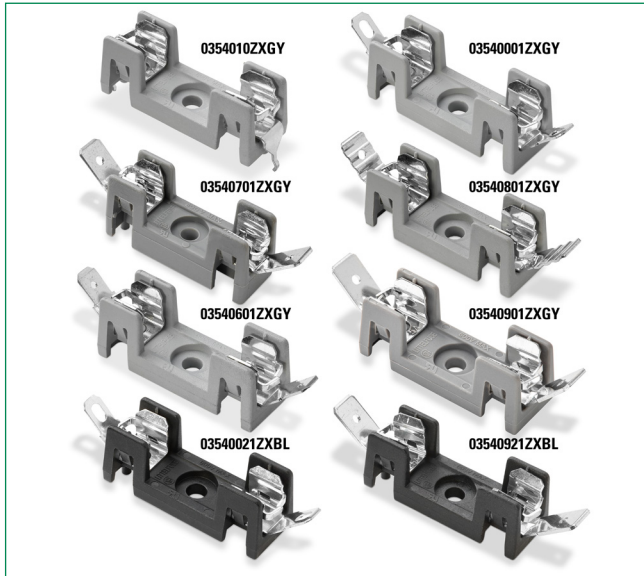


# 354 Series

## OMNI-BLOK® Molded Base Fuse Block for 3AB/3AG Fuses



### Additional Information



Resources

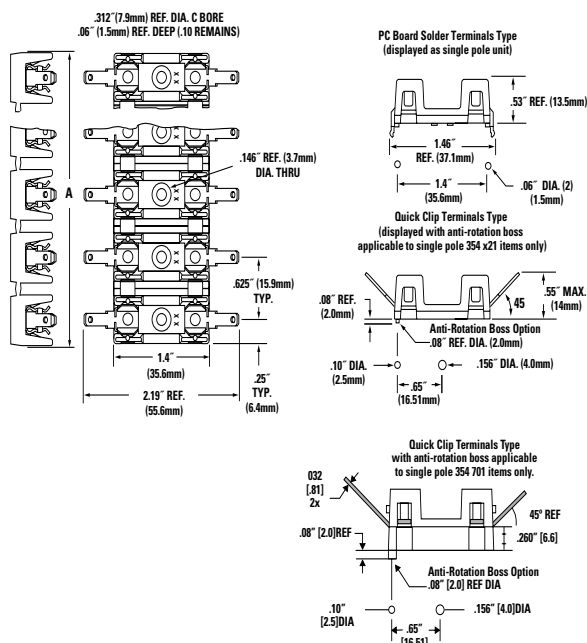


Accessories



Samples

### Product & Mounting Dimensions



\* Anti-Rotation Boss Option is not available on multiple poles.

### Product Characteristics

| Compatible Fuses Size | 3AB/AG  |
|-----------------------|---|
| Description           | A low profile fuse block featuring individual barriers which reinforce the fuse clips while providing greater protection against clip damage and electrical shock. The unique design permits self-alignment of clips to fuse cap. This, plus a one-piece clip/terminal assures low contact resistance. Higher current ratings have been attained using spring brass clips. With the exception of the two-pole unit, multiple pole units may be broken apart to obtain desired number of poles |
| Dielectric Strength   | 2200V., Minimum   |
| Clip/Terminals        | Tin plated phosphorus bronze except for 354900 series which is tin plated spring brass.   |
| Base                  | Glass reinforced Thermoplastic. UL 94V0 flammability rating. The standard base color is Gray except for 345 x21 items (single pole products which include anti-rotation boss option) where the standard base color is Black. Refer to the Ordering Information table on the following page for more information.  |
| Ambient Temperature   | -40°C to +85°C  |

### Electrical Information

| Series or Catalog Number | Terminals            | Rating            |
|--------------------------|----------------------|-------------------|
| 354 000                  | Solder               | 30A, 600 VDC/VAC* |
| 354 600                  | 3/16" Q.C.           | 20A, 600 VDC/VAC  |
| 354 700                  | 1/4" Q.C. .032" Clip | 30A, 600 VDC/VAC  |
| 354 800                  | 1/4" Q.C.            | 20A, 600 VDC/VAC  |
| 354 900                  | 1/4" Q.C.            | 30A, 600 VDC/VAC  |
| 354 101-GY               | P.C. Board           | 15A, 600 VDC/VAC  |

\*30 amp capability is based on temperature rise with #10 AWG wire properly soldered.

### Agency Approval

| Agency | Agency File Number |
|--------|--------------------|
| UL     | E14721*            |
| SP     | 7316**             |

\* - UL Recognized to UL/CSA 4248.1

\*\* - CSA Certified to CSA C22.2 No 39-M1987

### Clip Detail



Note: Two different style clips can be supplied for circuit identity or polarization. Contact Littelfuse.

# 354 Series

## OMNI-BLOK® Molded Base Fuse Block for 3AB/3AG Fuses

### Ordering Information

| Solder Terminals | NEMA Style 3/16" Quick Clip Terminals | 1/4" Quick Clip Terminals | NEMA Style 1/4" Quick Clip .032" Terminals | NEMA Style 1/4" Quick Clip Terminals | Number of Poles | Reference Dimension "A" [mm] |
|------------------|---------------------------------------|---------------------------|--|--------------------------------------|-----------------|------------------------------|
| Ordering No.     |                                       |                           | Ordering No.                               |                                      |                 |                              |
| 03540101ZXGY     | —                                     | —                         | —  | —                                    | 1               | .50" [12.7]                  |
| 03540021ZXBL *   | 03540621ZXBL *                        | 03540821ZXBL *            | —  | 03540921ZXBL *                       | 1               | .50" [12.7]                  |
| 03540001ZXGY     | 03540601ZXGY                          | 03540801ZXGY              | 03540701ZXGY *                             | 03540901ZXGY                         | 1               | .50" [12.7]                  |
| 03540002ZXGY     | 03540602ZXGY                          | 03540802ZXGY              | 03540702ZXGY                               | 03540902ZXGY                         | 2               | 1.12" [28.5]                 |
| 03540003ZXGY     | 03540603ZXGY                          | 03540803ZXGY              | 03540703ZXGY                               | 03540903ZXGY                         | 3               | 1.75" [44.5]                 |
| 03540004ZXGY     | 03540604ZXGY                          | 03540804ZXGY              | 03540704ZXGY                               | 03540904ZXGY                         | 4               | 2.38" [60.5]                 |
| 03540005ZXGY     | 03540605ZXGY                          | 03540805ZXGY              | 03540705ZXGY                               | 03540905ZXGY                         | 5               | 3.00" [76.2]                 |
| 03540006ZXGY     | 03540606ZXGY                          | 03540806ZXGY              | 03540706ZXGY                               | 03540906ZXGY                         | 6               | 3.63" [92.2]                 |
| 03540007ZXGY     | 03540607ZXGY                          | 03540807ZXGY              | 03540707ZXGY                               | 03540907ZXGY                         | 7               | 4.25" [108.0]                |
| 03540008ZXGY     | 03540608ZXGY                          | 03540808ZXGY              | 03540708ZXGY                               | 03540908ZXGY                         | 8               | 4.88" [124.0]                |
| 03540009ZXGY     | 03540609ZXGY                          | 03540809ZXGY              | 03540709ZXGY                               | 03540909ZXGY                         | 9               | 5.50" [139.7]                |
| 03540010ZXGY     | 03540610ZXGY                          | 03540810ZXGY              | 03540710ZXGY                               | 03540910ZXGY                         | 10              | 6.13" [155.7]                |
| 03540011ZXGY     | 03540611ZXGY                          | 03540811ZXGY              | 03540711ZXGY                               | 03540911ZXGY                         | 11              | 6.75" [171.5]                |
| 03540012ZXGY     | 03540612ZXGY                          | 03540812ZXGY              | 03540712ZXGY                               | 03540912ZXGY                         | 12              | 7.38" [187.5]                |

\* With Anti-Rotation Boss

**Disclaimer Notice** - Information furnished is believed to be accurate and reliable. However, users should independently evaluate the suitability of and test each product selected for their own applications. Littelfuse products are not designed for, and may not be used in, all applications. Read complete Disclaimer Notice at: [www.littelfuse.com/disclaimer-electronics](http://www.littelfuse.com/disclaimer-electronics)