

LED-HWB-24V-100W

96W NON-Dimmable Electronic LED Hardwire Box,
24 VDC

Cove, Under Cabinet & Millwork

Job Information		
Project Name		Type
Location		
Quantity		Date
Contact/Phone		
Notes		

Features

Construction

Extruded aluminum hardwire box with NON-dimmable class 2 electronic LED driver with 120 / 277V input.

AC Input Details

- Voltage range: 120 / 277 VAC
- Current: 0.98A @ 120VAC / 0.42A @ 277VAC

DC Output Details

- Voltage: 24 VDC
- Current: 4A Max

Environmental Requirements

- Min. Starting temp.: -20°C (-4°F)
- Max. T case temp.: 90°C (194°F)

Circuit Protection

Open and short circuit protection.
Auto-recover over load protection. Surge protection (2.5 KV).

Connectivity

Input: hardwired.
Output: DC 2.1 male connector with 18AWG.

Maximum remote installation distance is 25'.

Compatibility

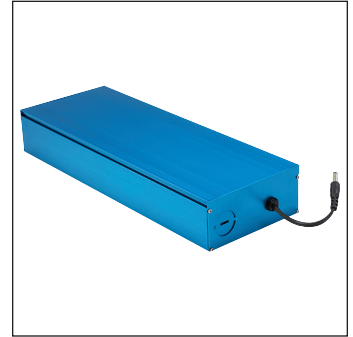
Compatible with all 24 VDC LED lighting fixtures.

Approvals

- Class 2

SPECIFICATIONS

Application	Undercabinet
Approved Location	Dry / Damp
Classification	Class 2
Dimming	No
Input Current	0.98A @ 120VAC 0.42A @ 277VAC
Link Connector	DC 2.1 male connector
Max. T case Temp.	90°C (194°F)
Min. Start Temp.	-20°C (-4°F)
Output Current	4A Max
Power Factor	> 0.9
Power Supply Type	Constant Voltage
Primary Voltage	120 / 277 VAC
Secondary Voltage	24 VDC
THD	≤ 20%
Warranty	5 Years
Wattage	96W
Working Efficiency	Up to 93%

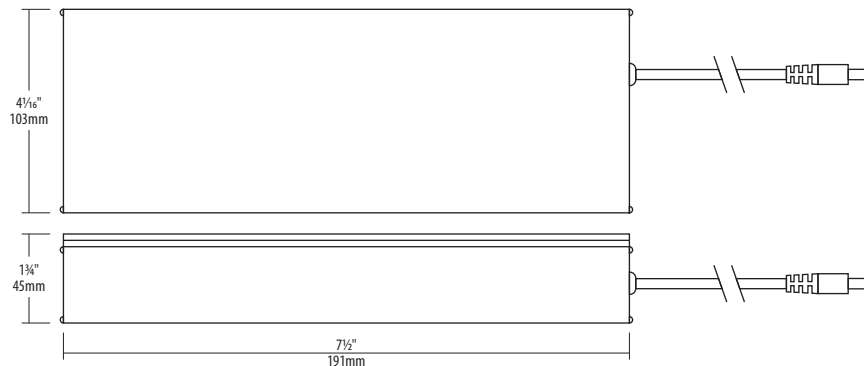


Description

This hardwire box is compatible with 24VDC fixtures. Its all aluminum construction provides excellent thermal transfer to maintain low operating temperature even at full load.



Notes: Accessories should be ordered separately. For additional options please consult your Liteline representative. Due to our continued efforts to improve our products, product specifications are subject to change without notice.



Ordering Guide



LED-HWB-24V-100W

96W class 2 power supply, 120 / 277VAC, 24VDC.