



Lochinvar®

HIGH EFFICIENCY BOILERS & WATER HEATERS

KNIGHT FIRE TUBE BOILER

Submittal Sheet

KHBWHB-Sub-02

KNIGHT FIRE TUBE BOILERS - FLOOR AND WALL MOUNT MODELS

Job Name:

Engineer:

Contractor:

Model #:

Location:

Agent/Wholesaler:

Type Gas:

Equipment Tag(s):

JOB NOTES:

Smart System Features

- › **Smart System Digital Operating Control**
Multi-Color Graphic LCD Display w/Navigation Dial,
Soft Keys and Loch-N-Link USB programming
- › **Three Boiler Setpoint Temperature Inputs**
Plus Domestic Hot Water Prioritization
- › **Built-in Cascading Sequencer for up to 8 Boilers, with Cascade Redundancy**
Multiple Size Boiler Cascade
Lead Lag
Efficiency Optimization
Front End Loading Capability
- › **Outdoor Reset Control with Outdoor Air Sensor**
Programmable for Three Reset Temperature Inputs
- › **Programmable System Efficiency Optimizers**
SH Night Setback
DHW Night Setback
Anti-Cycling
Outdoor Air Reset Curve
Ramp Delay
Modulation Factor Control
Boost Temperature & Time

Standard Features

- › **95% DOE AFUE Efficiency (55-285)**
- › **Modulating Burner with up to 10:1 Turndown**
Direct Spark Ignition
Low NOx Operation
- › **ASME Stainless Steel Heat Exchanger**
30 PSI ASME Relief Valve
- › **Top and bottom water connections (MNPT, WHB 55-285 Only)**
- › **Vertical & Horizontal Direct Vent**
PVC, CPVC, Polypropylene or SS Venting up to 100 ft.
- › **Universal Vent Adapter**
Built-in Combustion Analyzer Port
- › **SMART SYSTEM™ Control**
- › **Condensate Trap**
- › **ECM Variable Speed Boiler Circulating Pump**
- › **110V Convenience Outlet**
- › **High Altitude Models Available**
- › **Other Features**
Automatic Reset High Limit
Adjustable High Limit w/Manual Reset
Zero Clearances to Combustible Materials
15-Year Limited Warranty (See Warranty for Details)
5-Year Limited Parts Warranty

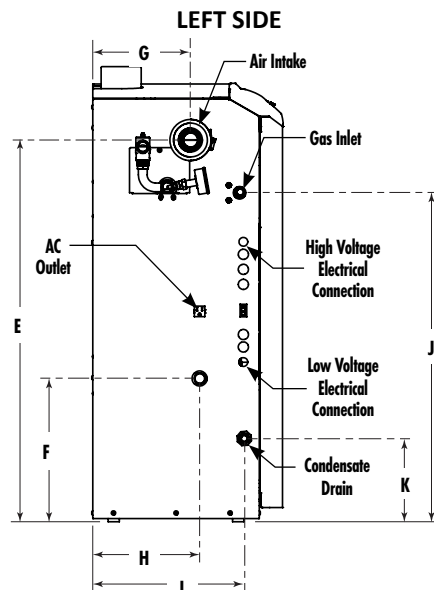
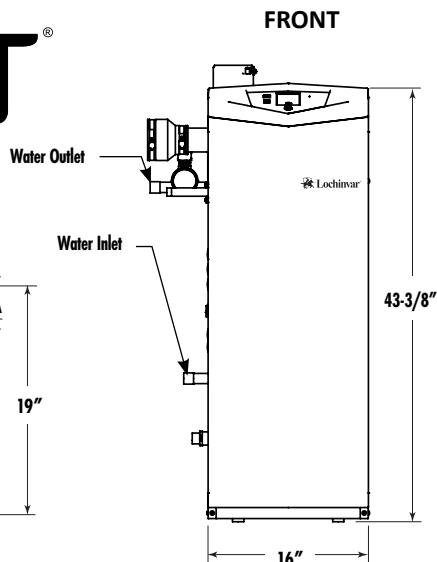
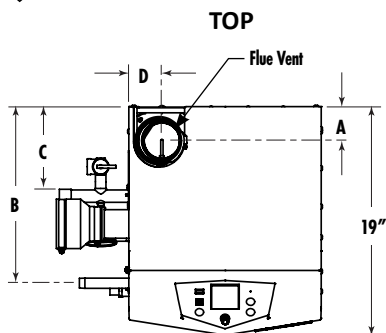


0-10 VDC BMS External Control Contact
0-10 VDC Boiler Rate Output Contacts
0-10 VDC Variable Speed System Pump Signal Input
0-10 VDC Signal to Control Variable Speed Boiler Pump
Modbus Contacts

- › **Time Clock**
- › **Data Logging**
Hours Running, Space Heating
Hours Running, Domestic Hot Water
Ignition Attempts
Last 10 Lockouts
- › **Maintenance Reminder**
Custom Maintenance Reminder with
Contractor Contact Information
Installer Ability to De-activate Service
Reminder
- › **Low-Water Flow Safety Control & Indication**
- › **Password Security**
- › **Customizable Freeze Protection Parameters**

Optional Equipment

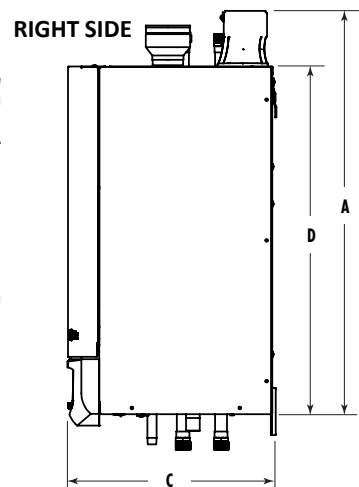
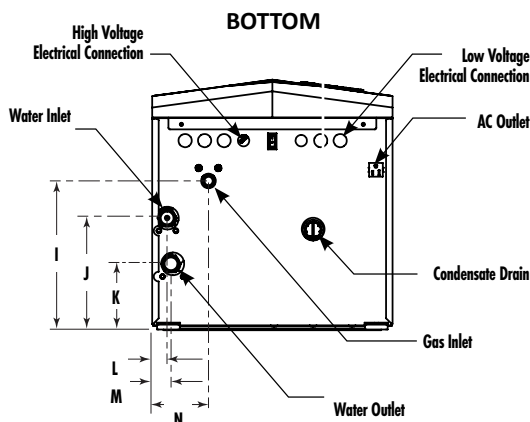
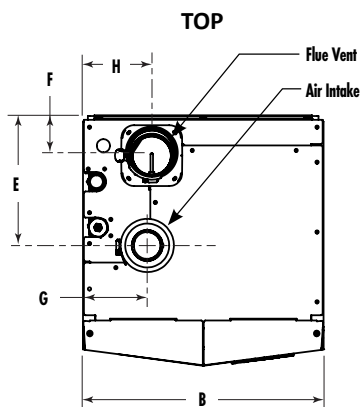
- CON-X-US Remote Connectivity
- Modbus Communication
- BACnet MSTP
- Flow Switch
- Low-Water Cutoff w/Manual Reset & Test
- Alarm Bell
- Concentric Vent Kit
- Condensate Neutralization Kit
- BMS Gateway to LON or BACnet IP
- Sidewall Vent Termination
- Wireless Outdoor Sensor
- LP Gas Conversion Kit
- › **Firing Codes**
M9 Standard Construction
M7 California Code



FLOOR MOUNT

AHRI CERTIFIED

Model Number	Input MBH		Heating Capacity MBH	Net AHRI Rating MBH	AFUE%	A	B	C	D	E	F	G	H	I	J	K	Gas Conn.	Water Conn.	Air Inlet	Vent Size	Shipping Weight (lbs.)
	Min	Max																			
KHB055N	8.3	55	51	44	95	3-1/2"	13-1/4"	6"	2-3/4"	37-2/3"	13-1/2"	8-1/3"	10-1/2"	15"	32-1/2"	8-1/3"	1/2"	1"	2"	2"	160
KHB085N	8.5	85	79	69	95	3-1/2"	13-1/4"	6"	2-3/4"	37-2/3"	13-1/2"	8-1/3"	10-1/2"	15"	32-1/2"	8-1/3"	1/2"	1"	2"	2"	165
KHB110N	11	110	102	89	95	2-3/4"	14-3/4"	7-1/2"	2-3/4"	38"	14-1/3"	9-3/4"	10-1/2"	15"	33"	8-1/3"	1/2"	1"	3"	3"	170
KHB155N	15.5	155	143	124	95	2-3/4"	14-3/4"	7-1/2"	2-1/2"	38"	14-1/3"	9-3/4"	10-1/2"	15"	33"	8-1/3"	1/2"	1"	3"	3"	175
KHB199N	19.9	199	184	160	95	3"	15-1/2"	7-1/2"	2-1/2"	38-1/3"	14-1/3"	10-1/2"	11-1/2"	15"	33"	8-1/3"	1/2"	1-1/4"	3"	3"	195
KHB285N	28.5	285	264	230	95	3"	15-1/2"	7-1/2"	2-1/2"	38-1/3"	14-1/3"	10-1/2"	11-1/2"	15"	33"	8-1/3"	1/2"	1-1/4"	3"	3"	205



WALL MOUNT

AHRI CERTIFIED

Model Number	Input MBH		Net AHRI Rating, MBH	AFUE%	Combustion Efficiency %	Thermal Efficiency %	A	B	C	D	E	F	G	H	I	J	K	L	M	N	Gas Conn.	Water Conn.	Air Inlet	Vent Size	Ship Wt. (lbs.)
	Min	Max																							
WHB055N	8.3	55	51	44	95.0	-	40"	18-3/4"	16"	31-1/8"	8-1/2"	3-3/4"	4-1/2"	6-1/2"	7-1/4"	8-7/8"	3-1/2"	1-1/2"	1-1/2"	6"	1/2"	1"	2"	2"	139
WHB085N	8.5	85	79	69	95.0	-	39-3/4"	18-3/4"	16"	31-1/8"	8-1/2"	3-3/4"	4-1/2"	6-1/2"	7-1/4"	8-7/8"	3-1/2"	1-1/2"	1-1/2"	6"	1/2"	1"	2"	2"	142
WHB110N	11	110	102	89	95.0	-	41-1/4"	18-3/4"	19"	31-1/8"	10"	2-3/4"	5"	5-1/4"	11-1/2"	8-1/2"	5"	1"	1"	4-1/2"	1/2"	1"	3"	3"	159
WHB155N	15.5	155	144	125	95.0	-	41-1/4"	18-3/4"	19-1/8"	31-1/8"	10"	2-3/4"	5"	5-1/4"	11-1/2"	8-1/2"	5"	1"	1"	4-1/2"	1/2"	1"	3"	3"	166
WHB199N	19.9	199	184	160	95.0	-	41-1/4"	18-3/4"	19-1/8"	31-1/8"	10-1/2"	3"	5-1/4"	6"	11"	9-1/2"	6-1/4"	1-1/2"	1-1/2"	4-1/2"	1/2"	1-1/4"	3"	3"	175
WHB285N	28.5	285	264	230	95.0	-	41-3/4"	18-3/4"	21-1/8"	31-1/8"	15"	3"	3-3/4"	5-1/4"	12-1/4"	11"	6-1/4"	1-1/2"	1-1/2"	6-1/2"	1/2"	1-1/4"	3"	3"	184
WHB399N	39.9	399	377	328	-	96.0	43-5/8"	25-1/4"	21-7/8"	34-3/8"	3-1/8"	4-1/4"	23"	3-7/8"	8-3/4"	12-1/2"	9-1/4"	2"	2"	23"	3/4"	1-1/2"	4"	4"	213

• Information subject to change without notice. • Dimensions shown are approximate and should not be used for construction purposes. • "Output" is "Heating Capacity" for units with inputs <300 MBH and "Gross Output" for units ≥300 MBH. • Change "N" to "L" for LP gas models. • The Net AHRI Water Ratings shown are based on a piping and pickup allowance of 1.15. • Lochinvar should be consulted before selecting a boiler for installations having unusual piping and pickup requirements, such as intermittent system operation, extensive piping systems, etc. • The ratings have been determined under the provisions governing forced draft burners.

For technical information call 800-722-2101. Lochinvar, LLC reserves the right to make product changes or improvements without prior notice.



Lochinvar, LLC
300 Maddox Simpson Parkway
Lebanon, Tennessee 37090
P: 615.889.8900 / F: 615.547.1000
f t i n Lochinvar.com

