

## BEAM CLAMPS



## Beam Clamp – Standard

- ULC, UL & FM Approved
- Black or Zinc finishes
- Malleable Iron ASTM A47
- 3/8" UNC set screw thread
- Accepts up to 13/16" flange thickness

Black Part#	Plated Part#	Rod Size	Max. Pipe Size	Max.Rec. Load /lbs
109038	109038G	3/8"	3/4" to 4"	400
109012	109012G	1/2"	5" to 8"	500
109058	109058G	5/8"	To 10"	600



## Beam Clamp – Wide Mouth

- ULC, UL & FM Approved
- Black or Zinc finishes
- Malleable Iron ASTM A47
- 3/8" UNC set screw thread
- Accepts up to 1 1/4" flange thickness

Black Part#	Plated Part#	Rod Size	Max. Pipe Size	Max.Rec. Load /lbs
109038W	109038WG	3/8"	3/4" to 4"	400
109012W	109012WG	1/2"	5" to 8"	500
109058W	109058WG	5/8"	To 10"	600



## Beam Clamp – Perlin

- Designed for use with large lip rolled steel purlins to eliminate the need to modify steel purlin for standard C-clamp
- Malleable iron with hardened steel cup point set screw

Part#	Rod Size
109038P	3/8"



### Beam Clamp Wrench

- A specially made ratchet wrench for easy installation of beam clamps

Part#	Length
9955	Beam clamp wrench

## HANGERS



### Hanger – Sprinkler Ring

- Sprinkler hangers are UL, FM, ULC approved
- Available to 8" IPS
- Also available for copper pipe and PVC coated

Part#	Size (pipe)
1091012	1/2"
1091034	3/4"
1091100	1"
1091114	1 1/4"
1091112	1 1/2"
1091200	2"
1091212	2 1/2"
1091300	3"
1091400	4"
1091500	5"
1091600	6"
1091800	8"



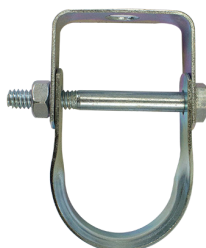
## Hanger – Split Ring



- Split ring hangers are available from 1/2" to 2"
- Available for 2 screw, or hinged type

2 screw part#	Hinged part#	Size (pipe)
1092038	1092038H	3/8"
1092012	1092012H	1/2"
1092034	1092034H	3/4"
1092100	1092100H	1"
1092114	1092114H	1 1/4"
1092112	1092112H	1 1/2"
1092200	1092200H	2"

## Hanger – Clevis



- Recommended for the suspension of stationary non-insulated pipe lines
- 1" to 8" sizes stocked, other sizes available
- Carbon Steel, plated Zinc

Part#	Size (pipe)
1093100	1"
1093114	1 1/4"
1093112	1 1/2"
1093200	2"
1093212	2 1/2"
1093300	3"
1093400	4"
1093600	6"
1093800	8"

## Deck Flange



- Cast ceiling deck flange to support threaded rod
- 3/8" or 1/2" rod size plated finish

Part#	Description
1099091MG	3/8" plated
1099092MG	1/2" plated

## Standard Pipe Stays



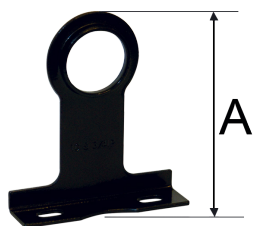
- Made of carbon steel & epoxy coated
- Used in water, heat & gas line
- Copper & iron pipe sizes

Standard part#	Copper	IPS	Measurement of "A"
1378011	1/2"	3/8"	1-7/16"
1378021	3/4"	1/2"	1-7/16"
1378031	1" 3/4"	3/4"	1-5/8"
1378080	1-1/4"	1"	1-5/8"
1378082	1-1/2"	1-1/4"	2-1/2"
1378020	N/A	1-1/2"	2-13/16"
1378098	N/A	2"	2-15/16"
1378092	N/A	2"	2-13/16"



## Extended Pipe Stays

- Made of carbon steel & epoxy coated
- Used in water, heat & gas line
- Copper & iron pipe sizes



Standard part#	Copper	IPS	Measurement of "A"
1378041	1/2"	3/8"	2-1/2"
1378051	3/4"	1/2"	2-1/2"
1378061	1"	3/4"	2-3/4"
1378081	1-1/4"	1"	2-3/4"
1378096	1-1/2"	1-1/4"	2-3/4"



## Eye Socket

- Steel Eye Sockets for 3/8" or 1/2" threaded rod
- Straight or offset models

Part#	Description
10990338	3/8"
10990312	1/2"
10990438	3/8" offset





### Side Beam Connector, threaded

- Threaded for 3/8" rod used in wood or steel construction
- 2" max pipe size



Part#	Size
10990538	3/8"

## PIPE STRAPS

### Stand-Off Two Hole Strap



- Size Range: 3/4" thru 2" CPVC pipe
- Surface Finish: Electro-zinc plated
- Support CPVC pipe of the vertical face of structural or composite wood joists with a minimum of 3/8" web thickness
- Flared edges protect the CPVE piping

Part#	Size
109S012A	3/4"
109S016A	1"
109S020A	1-1/4"
109S024A	1-1/2"
109S032A	2"

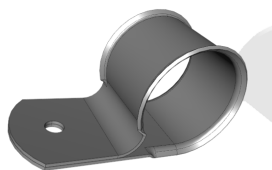
### Pipe Strap, 2 Hole

- Galvanized



Part#	IPS size
1614	1/2"
1615	3/4"
1616	1"
1617	1-1/4"
1618	1-1/2"
1619	2"
1620	2-1/4"
1621	3"
1622	4"

## Pipe Strap One Hole Wrap Around



- Recommended for the suspension of CPVC sprinkler pipes in fire protection applications
- Flared edges protect the CPVC piping
- UL® listed for fire protection applications

Part#	Size
1097034	3/4"
1097100	1"
1097114	1-1/4"
1097112	1-1/2"
1097200	2"

## Pipe Strap 2 hole for CPVC



- Size Range: 3/4" thru 2" CPVC pipe
- Surface Finish: Electro-zinc plated
- Support CPVC pipe horizontally from top, bottom or side of beam
- Retainer dimples secure hanger to pipe during installation
- Flared edges protect the CPVC piping

Part#	Size
1098034	3/4"
1098100	1"
1098114	1-1/4"
1098112	1-1/2"
1098200	2"

## Pipe Strap Side Mount



- Size Range: 3/4" thru 2" CPVC pipe
- Surface Finish: Electro-zinc plated
- Support CPVC pipe horizontally from top, bottom or side of beam
- Retainer dimples secure hanger to pipe during installation
- Flared edges protect the CPVC piping

Part#	Size
1099034	3/4"
1099100	1"
1099114	1-1/4"
1099112	1-1/2"
1099200	2"

## NUTS &amp; BOLTS



## Rod Button

- Plastic rod button for 3/8" rod
- Use in wood construction
- White finish

## Part#

109901



## Rod Coupling

- Carbon steel zinc plated
- Fully threaded

## Part#

## Size

1099081

3/8" x 1 3/4"

1099082

3/8" x 1 1/4"

1099083

1/2" x 1 3/4"

1099084

5/8" x 2 1/4"

1099085

3/4" x 2 1/4"

## Hex Bolts

- Galvanized steel hex bolts.



## Part#

## Size

1099131

1/2" x 2"

1099132

1/2" x 2-1/2"

1099133

5/8" x 2-1/2"

1099134

5/8" x 3"

1099135

5/8" x 3-1/2"

1099136

3/4" x 3"

1099137

3/4" x 3-1/2"



## Nuts &amp; Washers

## Nut Part#

## Washer Part#

## Fender Washer Part#

## Size

1099141P

1099151

1099152

3/8"

1099142P

1099153

1099163

1/2"

1099143P

1099154

-

5/8"

1099144P

1099155

-

3/4"



### Angle Bracket

- For attachments to wood or steel beams
- 2" x 1/2" bracket
- Hole to clear threaded rod

Part#	Description
10990638	3/8"
10990639	1/2"



### Toggle Wing

- Toggle wing for 3/8" rod

Part#
10992001



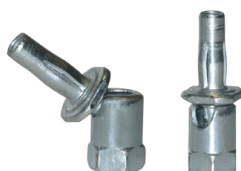
### Hanger Insert Nut

- Insert nuts plated for ring hangers

Nut Part#	Size
10992101	3/8"
10992102	1/2"

## SAMMY SCREWS

### Sammy Xpress Swivel



- Used in metal deck (20) or Purlin (35)
- Hang Plumb to 89° to Z-Purlin and to 45° in metal deck
- Accepts 3/8" rod



Part#	Description	Min.Steel Thickness
1089SXP35	XP35 for Z-Purlin	.060"



## Sammy Xpress Head Models



- The Sammy X-Press™ System is designed to provide direct attachment of threaded rod in metal deck (22-16 gauge) and thin gauge purlin (18-16 gauge), while providing reduced installation costs in terms of time and materials
- In many instance, access to the backside of the installed fastener is prohibited by panel liner or roofing insulation
- Sammy X-Press Anchors deliver the performance installers require without the use of a retaining nut
- The patent-pending X-Press Anchors consist of a threaded fastener and expandable sleeve
- The Xpress System features an easy-to-install anchor with expanding anchoring strips that collapse to prevent pullout after installation
- The XP 20 provides 750 pounds of pullout in 22-20 gauge metal deck and will support a 2" pipe
- The XP 35 delivers 1250 pounds of pullout in 18-16 gauge purlin and supports a 3½" pipe



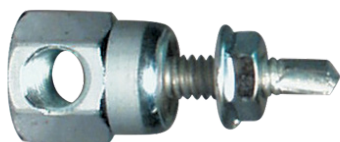
Part#	For thickness	Description
<b>1089XP20</b>	0.027" to 1/8"	Metal deck
<b>1089XP35</b>	0.060" to 1/8"	Purlin
<b>1089XP35SW</b>	0.060" to 1/8"	Purlin ( cULus only)

## Sammy Xpress Tools



- The SAMMY X-Press It™ Installation Tool assures a perfect installation every time offering the added convenience of one-tool efficiency, just drill and drive in SECONDS

Nut Part#	Description
<b>1089XPT</b>	X-Press It™ installation tool
<b>1089XPD</b>	X-Press It™ drill bit 25/64



### Sammy Screws for Steel Horizontal Mount

- Use driver 109914S
- Rod size is 3/8"



Part#	Model#	Self drilling/self tapping in steel to	Size	cULus	FM
1089301	SWDR 1	1/4"	1/4" x 1"	X	X
1089306	SWDR-516	1/2"	5/16" x 1-1/4"	X	X



### Sammy Screws for Steel Vertical Mount

- Use driver 109914
- Rod size is 3/8"



Part#	Model#	Self drilling/self tapping in steel to	Size	cULus	FM
1089303	DST-10	.188"	1/4" x 1"	-	-
1089301	DST-15	.188"	1/4" x 1-1/2"	-	-



### Sammy Swivel for Wood Horizontal Mount

- Self threading in wood
- Rod size is 3/8"

Part#	Model type	Size
<b>1089302</b>	SWG-20	1/4" x 2"
<b>1089380</b>	SWG-25-380	3/8" x 2-1/2"



### Sammy Screws for Wood Vertical Mount

- Self threading in wood
- Rod size is 3/8"

Part#	Model type	Size
<b>1088200</b>	GST-20	1/4" x 2"
<b>1088300</b>	GST-30	1/4" x 3"
<b>1088380</b>	GST-25-380	3/8" x 2-1/2"



### Sammy Screws for Concrete Vertical Mount

- Self tapping for concrete, pre-drilling
- Rod size is 3/8"

Part#	Model type	Size
<b>1087134</b>	CST-20	5/16" x 1-3/4"



109914



109914S

## Sammy Tools

- Sammy adapters for drills

Part#	Description
<b>109914</b>	for vertical screws
<b>109914S</b>	for sidewinder screws
<b>109915</b>	SDA bit for Hilti™ drill (use with Concrete SAMMY's)
<b>109916</b>	Sleeve tool (Tapcon method)

## SEISMIC BRACING

### Seismic Bracing

LynCar offers a full line of seismic bracing items from Erico (nVent CADDY). Many codes now include the requirement of seismic bracing for fire sprinkler systems. With the many changes in this product grouping, and the engineering design requirements, please contact your LynCar representative for details

