

MAXPOWER PIPE WRENCHES



Pipe Wrenches – Steel

- One piece housing with I-beam handle offers comfort and ease of use
- The forged jaw hook, coil and flat spring combine for easy ratchet action
- Heel and hook jaws are induction and flame hardened, then ground to a smooth surface
- MaxPower parts are interchangeable with most well known brands
- Manufactured to meet government specification GGG-W-651-E and ANSI B-107

Part#	Size
MP1008	8"
MP1010	10"
MP1012	12"
MP1014	14"
MP1018	18"
MP1024	24"
MP1036	36"



End Pipe Wrenches, Steel

- MaxPower aluminum pipe wrenches will handle the toughest piping jobs
- One piece housing with I-beam handle offers comfort and ease of use:
- The forged jaw hook, coil and flat spring combine for easy ratchet action
 - Heel and hook jaws are induction and flame hardened, then ground to a smooth surface
 - MaxPower parts are interchangeable with most well known brands
 - Manufactured to meet government specification GGG-W-651-E and ANSI B-107

Part#	Size
MP1114	14"
MP1118	18"



Pipe Wrenches – Aluminum

- MaxPower aluminum pipe wrenches weigh up to 40% less than cast iron, yet stand up to heavy-duty industrial piping jobs
- One piece housing with I-beam handle offers comfort and ease of use
- The forged jaw hook, coil and flat spring combine for easy ratchet action
- Uses the same induction and flame hardened heel and hook jaws as our cast iron handle pipe wrenches
- MaxPower parts are interchangeable with most well known brands
- Manufactured to meet government specification GGGW-651-E, Type II, Class C

Part#	Size
MP1210	10"
MP1214	14"
MP1218	18"
MP1224	24"
MP1236	36"
MP1248	48"



Pipe Wrenches, 90° Offset

- Maxpower's 90° Offset Pipe Wrenches are extremely popular because they are over 40% lighter than similar cast iron models
- Where other models have no clearance, their design allows work on pipes to the wall. Jaws are parallel to handle, allowing tool to fit in tight areas

Part#	Size
MP1314	14"
MP1318	18"
MP1324	24"



Oiler Replacement Parts for Ridgid 300, Berkley & MAXPOWER

- Parts for Ridgid 300, Berkley 5020 and MAXPOWER threading machines oiler guns and bucket

Part#	Description
BT30006C	Bullpan oiler with gun and hose
BT33026	Oiler gun with hose
BT300027	Oiler hose only (50ft)



Pipe Cutters – Metal

- This 1/8" - 2" Pipe cutter is to be mounted to the carriage assembly of a MAXPOWER RIDGID 300 or BERKLEY 5020 threading machine
- Wide rollers help ensure blade tracking
- Rollers can be removed and replaced with blades to speed cutting
- Both cutters feature replaceable cutter wheels which can be selected to suit the application

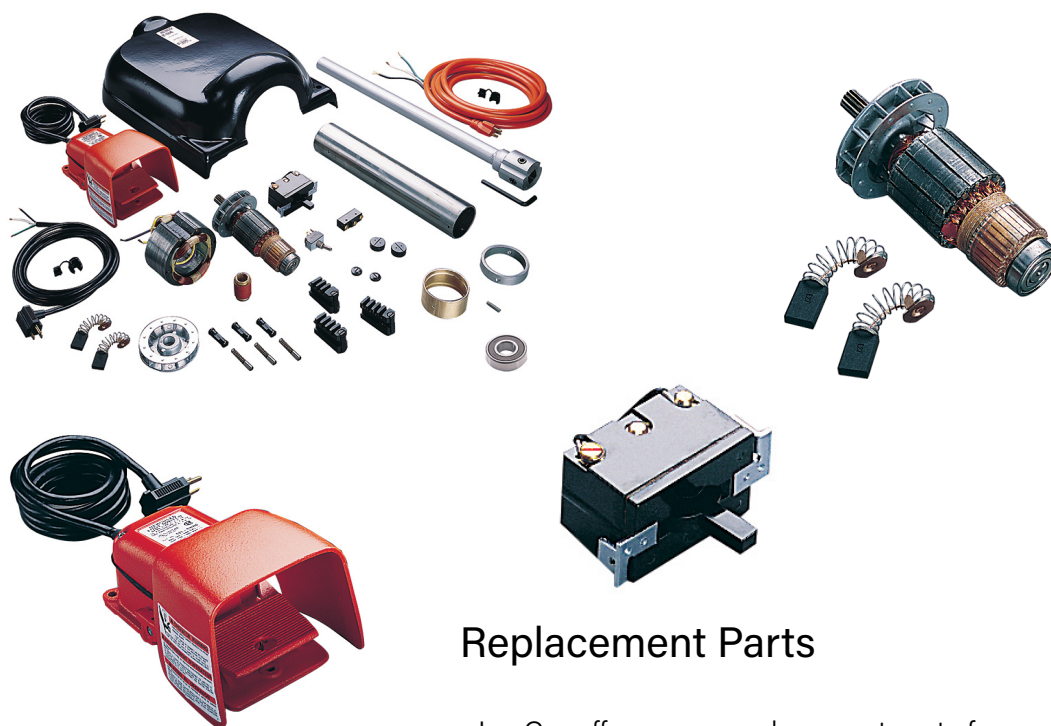
Part#	Description	RIDGID® X-REF
BT30033	Power drive cutter	42370
BT60000	Roller wheel 1-2" cap	34775
BT60002	Cutter wheel pin	34780
BT60003	Roller wheel 2½" - 6"	34785
BT60004	Cutter wheel pin	34790



Threading Dies

- Universal Pipe Threading Dies
- MaxPower dies are manufactured to meet ANSI and ISO specifications
- High-grade tool steel, world class manufacturing and stringent quality control ensure MaxPower dies provide fast clean threads and long life
- Dies available only in right hand models

Part#	Finish	RIDGID® X ref.
MP00033	HSS – 1/2" - 3/4" NPT	47765
MP00034	HSS – 1" - 2" NPT	47770
MP00035	HSS – 1/2" - 3/4" NPT for Stainless Steel	47785
MP00036	HSS – 1" - 2" NPT for Stainless Steel	47790



Replacement Parts

- LynCar offers many replacement parts for your Ridgid, MAXPOWER, or Berkley Threading machines
- Below is a selection of the most popular replacement parts

Part#	Description	RIDGID® X ref.
BT31086	Power Switch with Cord	68820
BT73031	Motor Brush Set (300/535)	44540
BT73030	Switch for Power Drive (300/535)	44505
BT73002	Power Drive Armature 115V (300/535)	44010
BT30054	Power Drive Jaw Inserts Set/3 (300/535)	44715
BT30001	Barrel Shaft	44100
BT30003	Thrust Ring	45345
BT73004	Armature Ball Bearing	44565
BT73011	Motor Brush Cap	44545
BT73012	Power Cord	46740
BT30054	Jaw inserts (set of 3)	47715
BT77779	Foot Switch with cord	68820



Power Drive Transporter

- For easy transportation of your 300 style threading machine.

Part#
BT30005

Die Head, Universal



- The MAXPOWER MP4990 Universal head accepts MAXPOWER, Reed and other brands of Universal dies
- It fits on RIDGID® brand machine models 300, 535 and 1822
- The MP4990 head offers positive alignment, die lubrication, size selection, and quick, manual release

Part#

MP4990

Power Threader MAXPOWER



- Compact design for easy transportation
- Versatile design
- Motor: 1500W universal type, 110V, Speed: 38RPM
- Cast aluminum body
- Capacity: 1/2" - 2"
- Automatic die head and oiler with gun
- Two sets of dies and 4 litres of oil included
- T type transporter is optional

Part#

MP50301

Roll Groovers, MAXPOWER



- Cast iron body roll groover
- Net weight" 17kg
- Grooves 1-1/4" - 6" schedule 10, and 1-1/4" - 3" schedule 40
- Mounts on most standard threaders, including RIDGID and MAXPOWER

Part#

MP91600G

GROOVERS

Pace 1039 Mini-Mite™ Service Groover



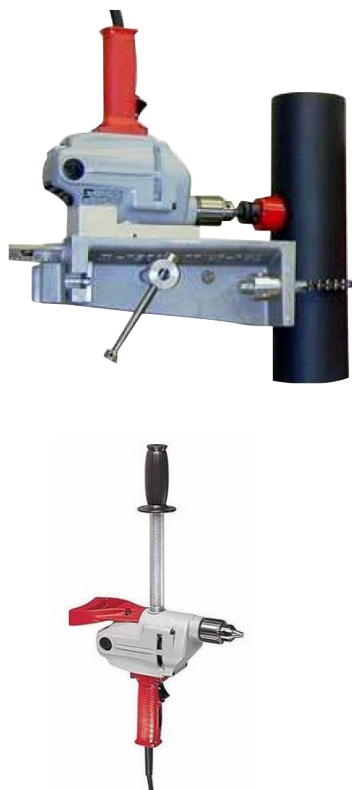
- The PACE 1039 Mini-Mite™ Roll Groover service tool goes from in-place grooving to machine grooving in one motion without the need of spending valuable time looking for tools
- Self-contained, it can be entirely operated with its own multi-function crank so there are no other tools needed
- 1¼" - 6" Schedule 40 capacity or thin-wall steel pipe
- Chucks in a Ridgid 300, Berkley BT3000 / BT5020
- Rugged construction with a larger top roller bearing, heavier top slide, and more material in the housing to make for more durability
- All hex drives on the PACE 1039 Mini-Mite™ are 15/16" so one wrench fits everything
- Portable
- All 15/16" Hex Drives
- Just 19 pounds

Part#

991039

SPRINKLER PIPE WORKING TOOLS

True Drill



- Secure grounding of the electric drill to the pipe eliminates the possibility of an electric shock in wet or damp areas
- Insulated Handle for advance drill tool affords additional protection against electric shock
- No Drill Twist to injure fingers or wrist as often occurs with drilling large diameter holes with a hand-held drill
- Eliminates Hazard to a drill operator working in a difficult or dangerous position while trying to exert high pressure on the cuffing tool such as when in a trench, on a scaffold or on a ladder
- Greatly Reduced Drilling Time is achieved through the use of a rack-and-pinion drive to advance the cutting tool, which the operation to effortlessly exert high pressure on the cutting tool
- Longer Life for cup hole saw or cutting tool, due to precision alignment of fixture to work piece
- Cost And Time Savings due to elimination of a pilot drill with the cup hole saw
- Small Pipe Adapter allows standard unit to be mounted on pipe with diameter as small as 1-1/4"
- Mounts Easily and Quickly to various size pipes, up to 10" diameter

Part#

991660

Description

True drill with Milwaukee drill

Pilot Clamp Kit



- The best system for drilling holes up to 2" in diameter into pipe up to 4" in diameter
- Allows quick and easy drilling of a clean hole with no wobble in vertical or horizontal position, even in tight cramped spaces.
- **Kit includes:**
 - Six hole saw guides for fire protection use ranging from 1" to 2"
 - five LENOX hole saws
 - two LENOX arbours
 - pilot bit, chart and case

Part#	Description
99200	Pilot clamp kit / Pince pilote

Threaded Rod Cutter



- Designed for cutting mild steel and stainless steel threaded rod
- Deburring work after cut can be ELIMINATED because of unique blades and mechanism
- Not to mention It's FASTER, CLEANER and SAFER
- This is the answer to the Occupational Safety ban on using chop saws for deburring threaded rod
- Designed for cutting mild steel threaded rod
- Approximately 600 cuts per side of double sided blades

Part#	Description
MP991090	Standard rod cutter with 3/8" dies
MP991092	Replacement 3/8" dies

SPRINKLER SPECIALTY TOOLS

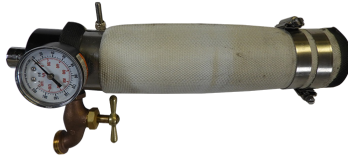
On Center Tool



- Makes all hole drilling accurate
- A center punch and level combination accurately locates position of holes to be drilled into pipe
- Excellent for field or shop use
- The housing is aluminum
- Mineral spirit leveling vials are inset, protected by the housing and visible from 2 sides

Part#
99ON

The Drain Sock



- A drain sock is a device that clamps around the sprinkler drop, trapping the sprinkler head in the collection chamber. When the head is loosened, the pressure is checked by a 200 lb. Pressure gauge via a 1/4" port. Then, the stagnant water can be drained via the 1/2" hose bib connection, all in a safe controlled manner.
- Who needs a drain sock and when?
- Any crew working in an unfamiliar building
- Any crew working in occupied buildings (hospitals, nursing homes, retail stores, office buildings, etc.) where the smell of the stagnant water is a problem. The Drain Sock can keep the stagnant water contained until reaches an acceptable point
- Anyone who ever gets sent out to move a head by himself
- Every truck needs a Drain Sock

Part#	Description
99DS	Drain Sock

Shutgun Shut Off Tool



- To stop the flow of an activated sprinkler head
- Easy to use, one hand can insert the tool into the head
- Use on pendant, upright, broken, concealed, institutional, and recessed style sprinklers
- Shutgun incorporates a fusible link that allows the sprinkler head to reactivate if a fire starts.
- For fire service or maintenance personnel to stop water damage from activated sprinklers

Part#	Description
99SG1	Shutgun Tool

Level – Spot Right



- Redesigned spot rite level
- Use as a torpedo level or a sprinkler drop levelling tool.
- Strong magnetic holds
- Aluminum frame for extra strength.
- Large vials for easy visibility
- 1/2", 3/4" and 1" threaded ends

Part#	Description
99SR	Spot right level



Dual-Vac

- The Dual-Vac is a new way to approach the old problem of removing water left in a piping system after draining. It makes repairs and modifications easier.
- When connected to piping the water distribution system becomes a vacuum system
- Dual-Vac combines the benefits of wet/dry vacuum and a submersible pump
- Submersible pumps will not lift water below the inlet, often much water remains. Combining a wet/dry vacuum with a submersible pump makes a unit with unlimited water clean up capability that will vacuum away water to the last drop
- The Dual-Vac will suck the water away from the opening you have created, allowing you to work without the normal problems caused by water left in drops or other system piping

Part#	Description
99VC	Dual-Vac

PIPE WORKING TOOLS



Pipe Stands - Foldable

- Adjustable and folding pipe stand
- Lightweight only 9 ½ KG, easy to transport
- Carrying handle
- Square 25 mm Legs
- Adjustable Height 68 cm to 106 cm
- Capacity 900 kg



Part#	Description
MP225	V-Head folding Pipe Stand



Replacement Cutting Wheels

- Replacement cutting wheels for your Ridgid equipment

Part#	Ridge Tool#	Ridge Tool Cutter	Application
BT01100	33100	1, 2, 42, 535, 300, 1A, 3A, 42A, 201, 202, 360, 820, 364	Steel, ductile iron thin
BT01000	33105		Steel, ductile iron heavy duty
BT01200	33110		Steel & stainless steel heavy duty
BT01300	33115		Cast iron
BT04200	33130	3, 4, 3S, 4S, 44, 44S, 466, 468, 472	Stainless Steel
BT04100	33120		Steel, ductile iron thin
BT04000	33125		Steel & stainless steel heavy duty

Tri-Stand – MAXPOWER



- Compare to:
Ridgid™ 460
Berkley™ BT335, BT333
Ships Fully Assembled
- Chain Vise Stand
- Tri-Stand vise has folding lower tray for ease of transporting, while providing additional workspace to hold tool, or oil cans within convenient reach
- Vise base has integral pipe rest and pipe bending slots and hardened replaceable jaws
- Parts interchangeable with competitive style units

Part#
MP200

Pipe Cutter – MAXPOWER



- For cutting steel and cast iron pipes. Solid rugged construction
- Wide rollers to ensure accurate guiding of blade to pipe

Part#	Size
MP4000	2" - 4" cutter
MP4004	Cutter wheel

PIPE CUTTERS



Internal Plastic Pipe Cutter

- Internal plastic pipe cutter
- Fits 1 ¼" pipe or larger
- Cuts CPVC, PVC, ABS pipes
- Fits all power drills
- Hardened steel blade for long lasting life.
- Extra wheel is included with unit

Part#	Description
99PS101	Pipe Shooter with 4 ½" shaft
99PS110	Pipe Shooter with 7 ½" shaft
99PS102	Blade Replacement



Pipe Cutter – Hand

- Heavy duty pipe cutter for cutting steel pipe

Part#	Description
MP42A	Cuts up to 2" pipe
MP4003	Cutter wheel



Pipe Cutter - Large

- Large cutter for pipe sizes from 2" to 4"
- For cutting steel and cast iron pipes
- Wide rollers for accurate cuts
- Sturdy bolts to prevent twisting
- Fine threaded shaft for pressure adjustment
- Burr free cuts

Part#	Description
MP4000	Cutter 2" to 4"
MP4004	Replacement cutting wheel



Deburrer HSS

- For quick deburring of edges on CPVC and other plastic pipe
- Replaceable blade and plastic handle

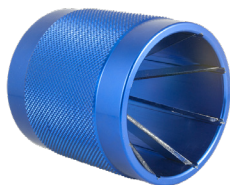
Part#	Description
21655	Deburrer HSS
21652	Replacement blade



LynCar Zip Action Plastic Pipe Cutter

- Professional duty zip-action tube cutter
- Four Roller top support
- Deburring tool attached
- Fast ratchet smooth action telescopic cutter

Part#	Description
4354	Cuts 1/4" to 2-1/2" OD
4352WP	Cutter wheel for plastic



Deburring Tool

- Die cast body
- CPVC / PVC pipe
- Debur up to 2" piping

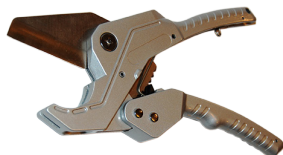
Part#	Size
4356	1 1/4"
4364	2"



ABS Heavy Duty Cutter

- Replaceable heavy duty stainless steel blade cuts all types of plastic pipe, including CPVC
- Heavy duty steel construction

Part#	Description
4682	Cutter heavy duty to 2" pipe
4682B	Blade



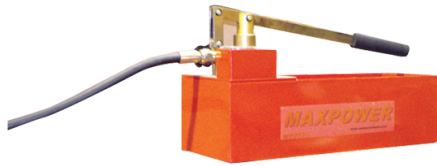
Heavy Duty Cutter for CPVC and other plastic pipe

- Premium duty stainless blade
- Quick open
- Cuts to 1-3/8" OD pipe
- Replacement blade available

Part#	Description
4685	Heavy duty cutter
4685B	Replacement Blade

TEST PUMPS

Hand Operated Test Pump



- Ideal for pressure testing residential water tanks to 200psi
- Comes with shut-off valve gauge and connector hose

Part#

MP8125

Hydrostatic Test Pumps



- General Pump, hydrostatic test pumps
- Water or gravity feed
- Shipped with an adjustable relief valve
- Enclosed metal case
- Tests fire hose and fire sprinkler systems

Part#	Description
996334350	350 PSI, ¾ HP, 3 GPM, 64 lbs
996334550	550 PSI, ¾ HP, 2 GPM, 65 lbs
996334750	750 PSI, 1 HP, 2 GPM, 70 lbs
996334P	Replacement Pump

HAND TOOLS

Nut Setter – 1/4" Hex Screw



- Use with 1/4" drill to drive hex sheet metal and anchor screws
- Heat treated 1/4" Drill shank 1-3/4" Length
- Magnetic socket

Part#

1594

LynCar Tape Measure



- Large magnetic end hook
- Nylon coated blade for maximum durability
- Impact absorbing rubber jacket protects case

Part#	Size
3947LC	1" x 25"



Tape Measure – K74 Dura – Coat

- Power return
- Belt clip
- Metric and Imperial rule

Part#	Size
3948	3/4" x 16"



19 in 1 multi piece Screwdriver

- Robertson, Slot, Philips bits, and nut drivers
- Ratcheting style

Part#	Description
4200	19 in 1 screwdriver



Knife – Disposable Utility

- Disposable utility knife
- 8 part breakaway blade

Part#
4322



Utility Knife

- Metal die cast case with two blades
- Replacement 5 pack blades available

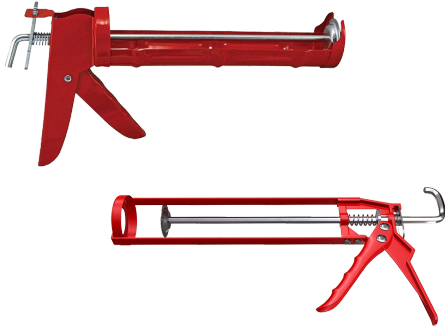
Part#	Description
4323	Knife
4325	5 blades



Level – Torpedo

- Magnet and grooved
- Coloured liquid in vials
- 9" length
- Magnet for iron pipe
- Black plastic

Part#
4472



Caulking Gun

- Drop in or skeleton types
- Painted steel body
- Quick release

Part#	Description
5100	Drop in
5105	Skeleton

WRENCHES



Wrench – MAXPOWER

- MaxPower is the world's leading manufacturer of adjustable wrenches.
- MaxPower wrenches meet ISO9001 / ASME B107 Standards
- Best quality, value and innovation.
- Forged alloy handles, chrome vanadium, black phosphate or red dipped handle
- Easy to read scale below jaws

Size	Chrome Vanadium	Black Phosphate	Red Dipped	Capacity
4"	MP204	MP104	MP6004	1/2"
6"	MP206	MP106	MP6006	3/4"
8"	N/A	N/A	MP6008	7/16"
10"	N/A	N/A	MP60010	1 1/8"
12"	MP212	N/A	MP60012	1 1/4"
15"	MP215	MP115	MP60015	1 5/8"
18"	MP218	MP118	N/A	2"
24"	MP224	N/A	N/A	2 3/8"



Wrench – Beam Clamp

- Designed to be used with all 3/8" square head set screws as used with beam clamps, C clamps, and purlin clamps

Part#
9955

Wrench – Ratcheting Box



- Offset or straight
- 12 pt opening

Part#	Size	Opening	Description
4492	6-3/4"	1/2" x 9/16"	Straight
4497	8"	3/8" x 7/16"	Offset

PLIERS

Pliers – Locking, MAXPOWER



- Curved jaws with wire cutters nickel plated (5" 7" 10")



Part#	Size	Description
4580	5"	Curved jaws
4581	7"	Curved jaws
4582	10"	Curved jaws
4583	7"	Long nose jaws
4584	9"	Long nose jaws

Pliers – Pipe, MAXPOWER



- Box Joint Pliers
- Black Phosphate Finished
- PVC Dipped Handle

Part#	Size
6007	8"
6008	10"
6009	12"

Plier – Needle Nose



- Channellock model with blue handles
- Polished high carbon drop
- Forged steel
- Perfectly mated cutter
- Heat treated to hold it's edge

Part#	Size
C317	7-1/2"

Pliers – Diagonal Cutting



- 7 inch Diagonal Cutting Pliers with Lap Joint
- High leverage, heavy duty construction
- Precision made of fine polished, high carbon drop forged steel
- Perfectly made cutters, scientifically heat treated to hold their edge
- Distinctive CHANNELLOCK BLUE comfort grips

Part#	Size
C337	7"

Plier – Griplock Channellock

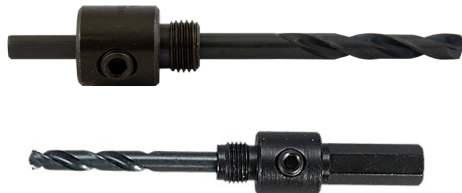


- Ergonomically designed offset head for greater leverage
- Special jaw design accommodates many shapes
- Patented Permalock® fastener eliminates nut and bolt failures
- Distinctive CHANNELLOCK BLUE comfort grips

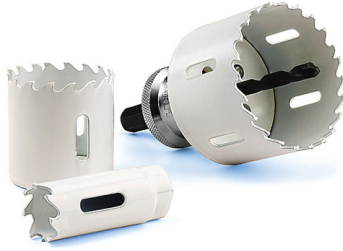
Part#	Length	Adjustment	Cap
CGL6	6"	5	1-1/4"
CGL10	10"	5	1-3/4"
CGL12	12"	6	2-7/8"

LENOX BLADES

Arbors – LENOX



Part#	Fits Hole Saw	Shank	Chuck
L011L	L9L – L19L	Hex	1/2" and larger
L011SL	L9L – L19L	SDS	-
L022L	L20L – L96L	Hex	1/2" and larger
L022SL	L20L – L96L	SDS	-
L033L	L20L – L96L	Solid/Hex	1/2" and larger
L044L	L9L – L19L	3 sided	1/4" and larger
L055L	L9L – L19L	Hex	3/8" and larger
L066L	L20L – L96L	Hex	3/8" and larger
L077L	L24L – L96L	Hex	3/8" and larger



Hole Saw – LENOX

- LENOX bi-metal hole saws have a patented tooth design and patented tooth configuration which provides long life and fast cutting in a wide variety of materials

Part#	Size	Part#	Size	Part#	Size	Part#	Size
L9L	9/16"	L21L	1-5/16"	L36L	2-1/4"	L56L	3-1/2"
L10L	5/8"	L22L	1-3/8"	L37L	2-9/16"	L58L	3-5/8"
L11L	11/16"	L23L	1-7/16"	L38L	2-3/8"	L60L	3-3/4"
L12L	3/4"	L24L	1-1/2"	L40L	2-1/2"	L62L	3-7/8"
L13L	13/16"	L26L	1-5/8"	L41L	2-5/16"	L64L	4"
L14L	7/8"	L27L	1-11/16"	L42L	2-5/8"	L66L	4-1/8"
L15L	15/16"	L28L	1-3/4"	L44L	2-3/4"	L68L	4-1/4"
L16L	1"	L29L	1-13/16"	L46L	2-7/8"	L70L	4-3/8"
L17L	1-1/16"	L30L	1-7/8"	L48L	3"	L72L	4-1/2"
L18L	1-1/8"	L32L	2"	L50L	3-1/8"	L76L	4-3/4"
L19L	1-3/16"	L33L	2(1/16)	L52L	3-1/4"	L80L	5"
L20L	1-1/4"	L34L	2-1/8"	L54L	3-3/8"	L88L	5-1/2"

Lenox Leader Bits



- Self-Feed Wood Drill Bits
- High speed steel cutting edge for superior durability in nail-embedded wood
- Chamfered edge allows bit to be removed easily after drilling
- Flutes remove excess wood chips
- Longer shank that cuts 4"x4" without extension
- Extra lead screw and wrench included

Part#	Size	To Fit Pipe Size
LL100	1"	1/2"
LL150	1 1/2"	1"
LL200	2"	1 1/2"
LL256	2 9/16"	2"



Arbor Pilot Drills – LENOX

Part#	Description	Fits Hole Saw
L4321	Pilot Drill	L011L, L022L, L044L
LB4321	Pilot Drill 25 pack	L011L, L022L, L044L
L56PD	Pilot Drill 1 pack	L011SL, L022SL, L033L, L055L, L066L, L077L

Saw Blades – Bi-Metal Reciprocating – Lenox



- Faster and more efficient cutting
- Strong blade to reduce breaks and increase durability
- Efficient cutting in the widest range of materials
- Noted * is two per pack

Lenox 5 per pack	Lenox 25 PK Bulk	Size	TPI	Description
L414R	L414RQ	4" x 3/4" x .035	14T	Heavy gauge metal 1/4" -1/2" / 6-13mm, hard rubber, fiber & angle iron
L418R	L418RQ	4" x 3/4" x .035	18T	Heavy gauge metal 1/8" -1/4" / 3.2-6mm. Conduit & tubing, opening wood crates, removing wood siding or shingles
L610R	L610RQ	6" x 3/4" x .035	10T	Wood, composition, plastic, cast aluminum & non-ferrous metals
L614R	L614RQ	6" x 3/4" x .035	14T	Heavy gauge metal 1/4" -1/2" / 6-13mm, hard rubber, fiber & angle iron
L618R	L618RQ	6" x 3/4" x .035	18T	Heavy gauge metal 1/8" -1/4" / 3.2-6mm. Conduit & tubing, opening wood crates, removing wood siding or shingles
L624R	L624RQ	6" x 3/4" x .035	24T	Finer teeth for faster cutting of metal to 1/8", galvanized pipe
L636RP	L636RQ	6" x 3/4" x .050	6T	For plaster, plaster board and lath. Bi-directional cutting
L650R*	L650RQ	6" x 3/4" x .050	10/14T	Heavy duty. Extended life when cutting pipe, structural steel, stainless steel: 3/16" - 3/4" / 5-20mm. Fire and rescue
L656R	L656RQ	6" x 3/4" x .050	6T	Rough work in wood, fast cutting, used in remodeling and demolition work
L810R	L810RQ	8" x 3/4" x .050	10T	Wood, composition, plastic, cast aluminum & light non-ferrous metals & stainless steel
L818R	L818RQ	8" x 3/4" x .035	18T	Heavy gauge metal 1/8" -1/4" / 3.2-6mm. Conduit & tubing, opening wood crates, removing wood siding or shingles
L850R	L850RQ	8" x 3/4" x .035	10/14T	Heavy duty. Extended life when cutting pipe, structural steel, stainless steel: 3/16" - 3/4" / 5-20mm. Fire and rescue
L956R	-	9" x 3/4" x .050	6T	Rough work in wood, fast cutting, used in remodeling and demolition work
L960R*	L960RQ	9" x 7/8" x .062	10T	Demolition work in wood and metal. Fire and rescue
L966R*	-	9" x 7/8" x .062	6T	Demolition work in nail-embedded wood
L110R	L110RQ	12" x 3/4" x .050	10/14T	All woods, plastic, cast aluminum & light no-ferrous metals, stainless steel
L118R	L118RQ	12" x 3/4" x .035	18T	Heavy gauge metal 1/4" -1/2" / 6-13mm, hard rubber, fiber & angle iron
L156R	L156RQ	12" x 3/4" x .050	6T	Rough work in wood, fast cutting, used in remodeling and demolition work



Saw Blades – bi-metal Portable Band Saw

- Leno brand bi metal blades with high speed steel tooth tips combined with flexible alloy steel backing material results in band saw blades that are the most cost effective choice for most metal sawing applications

Part#	Size	Cuts These Materials	TPI
L80146	53/3-4 x ½ x .025	1/4" & larger, metals, including stainless steel	10/14
L80147	53/3-4 x ½ x .025	1/8"-5/16", metals, including stainless steel	14/18
L80112	44-7/8 x ½ x .023	1/8"-5/16", most metals	14/18
L80142	44-7/8 x ½ x .025	1/8"-5/16", metals, including stainless steel	14/18
L80144	44-7/8 x ½ x .025	1/4" & larger, metals, including stainless steel	10/14

NIPPLE BOXES



Nipple Boxes

- Holds CL thru 6" nipples
- Fold away handle
- Epoxy coated steel, light weight yet strong

Part#	Size
3080	1/2"
3081	3/4"
3082	1"



Fitting Tote Tray

- 8 compartments and a fold away handle
- Excellent for copper fittings
- 18 gauge epoxy coated steel

Part#
3088



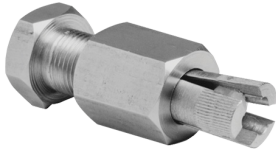
Nipple Box – 1/2" & 3/4" (Combo)

- Holds both 1/2" and 3/4" nipples
- Holds (39) 1/2" CL thru 6"
- Holds (39) 3/4" CL thru 6"
- Fold away handle
- Epoxy coated steel
- 12-3/4" x 7-1/2" x 6-1/2"

Part#
3091

NIPPLE WRENCHES

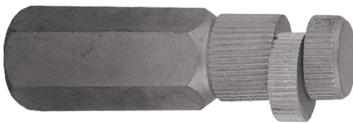
Internal Nipple Wrench - Deluxe



- Designed to grip internally the smallest area of the nipple
- Removes broken nipple threads form fittings
- Loosens and tightens nipples

Part#	Size
4511	1/2"
4512	3/4"
4513	1"

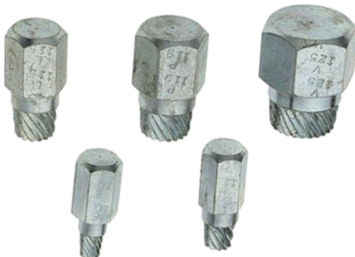
Internal Nipple Wrench



- Cam type
- Removes or inserts nipple
- Heat treated and plated

Part#	Size
4531	1/2"
4532	3/4"
4533	1"

Internal Nipple Wrench



- Extract broken bolts quickly
- Carded for display
- 5pcs 1/8", 1/4", 3/8", 1/2", 3/4"

Part#	Description
52501	Plumber's extractor kit / Trousse d'extraction du plombier

RACK STRAP



Rack Strap

- Rack-Strap holds on when rope and rubber cords fail
- Easy to Use- Take only seconds to secure a load
- Save valuable time and effort
- Eliminates the ongoing purchase of tie-down materials
- Permanently bolted or welded; always ready to use
- Multiple mounting brackets to fit almost any truck rack

Part#	Description
99RS	Right Angle Mounting Bracket for square tube racks Fits racks built by Adrain Steel, Cross, Treads, Leer, Truck Rack Company, Vanguard, Weatherguard, and many others
99RS2	Curved mounting bracket for 1-7/8" O.D. Round pipe fits racks built by McWelco, Rack-It Truck Racks and other custom racks
99RS3	Curved mounting bracket for 2" O.D. Round pipe, Fits racks built by Adrain Steel, Kargo, Master and other custom racks
99RS4	Curved mounting bracket for 1-5/8" O.D. Round pipe fits racks built by Blackmax, Vanguard and other custom racks
99SK	Replacement strap kit

MISCELLANEOUS

Strap – Tie Down

- Packages of 10
- Blend of natural rubber & EPDM
- Just hold and stretch into place



Part#	Min	Max
4901	9"	14"
4903	15"	20"
4905	20"	25"
4907	31"	36"
4909	41"	46"

Vinyl Outdoor Extension Cords

- cUL approved
- Three Conductor
- Orange
- Meets OSHA requirements for outdoor use
- Vinyl jacket resists moisture, abrasion and prolonged exposure to sunlight. 12/3 SJTW, 15A rating



Part#	Description
8167	9"
8168	15"