

# ALLIA SHR-6034 Acrylic Alcove Three-Piece Shower

Model number:	107002S
---------------	---------

Dimensions:	60" x 34.5" x 88"	Installation:	Alcove	Material:	Acrylic
-------------	-------------------	---------------	--------	-----------	---------



## Standard Features:

- 3-piece shower with 3 1/4 in. low threshold and integrated roofcap
- Right, Left, two molded seats or no seat and right, left or center drain (drain included)
- Standard : 12 in. white grab bar - Drain & chrome grid
- Optional grab bars available (grab bar installed on back wall replaces standard bar)
- All grab bars can support up to 300 lbs
- Wide 3-level corner shelves

## Product characteristics:

- Made in North America
- Multi-Piece Unit
- Easy Installation

## Warranty:

25 Years

## Standard Colors:



White (001)

## Certifications



ne or more of the following certifications:

# ALLIA SHR-6034 Acrylic Alcove Three-Piece Shower

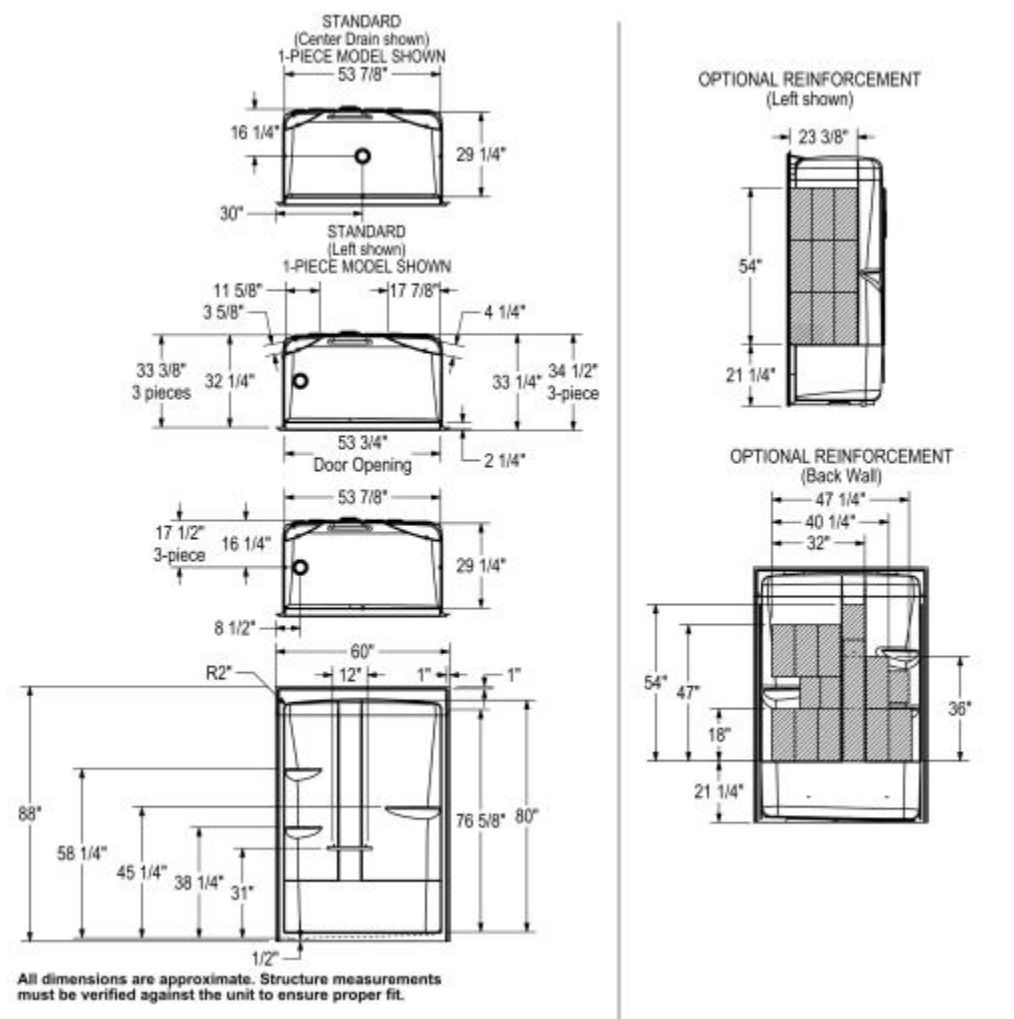
Model number:

107002S

Dimensions: 60" x 34.5" x 88"

Installation: Alcove

Material: Acrylic



Dimensions

60 x 34 1/2 x 88 In.  
(1524 x 876 x 2235 mm)

Weight

169 lbs - 77 kg

Shape

Rectangular

Pieces

3

Drain location:

Two seats, center drain

Left seat, center drain

Left seat, right drain

No seat, center drain

No seat, left drain

No seat, right drain

Project:

Contractor:

Representative:

Date:

Tel:

Notes: