

ALLIA SH-6034 Acrylic Alcove One-Piece Shower

Model number:	107003
---------------	--------

Dimensions:	60" x 34" x 79"	Installation:	Alcove	Material:	Acrylic
-------------	-----------------	---------------	--------	-----------	---------



Standard Features:

- 1-piece shower with 3 1/4 in. low threshold
- Right, Left, two molded seats or no seat and right, left or center drain (drain included)
- Optional fold down seat available
- Standard : 12 in. white grab bar - Drain & chrome grid
- Optional grab bars available (grab bar installed on back wall replaces standard bar)
- All grab bars can support up to 300 lbs

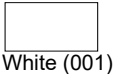
Product characteristics:

- Made in North America
- One-Piece Unit
- Low Threshold

Warranty:



25 Years

Standard Colors:



White (001)

Certifications



ne or more of the following certifications:



ALLIA SH-6034 Acrylic Alcove One-Piece Shower

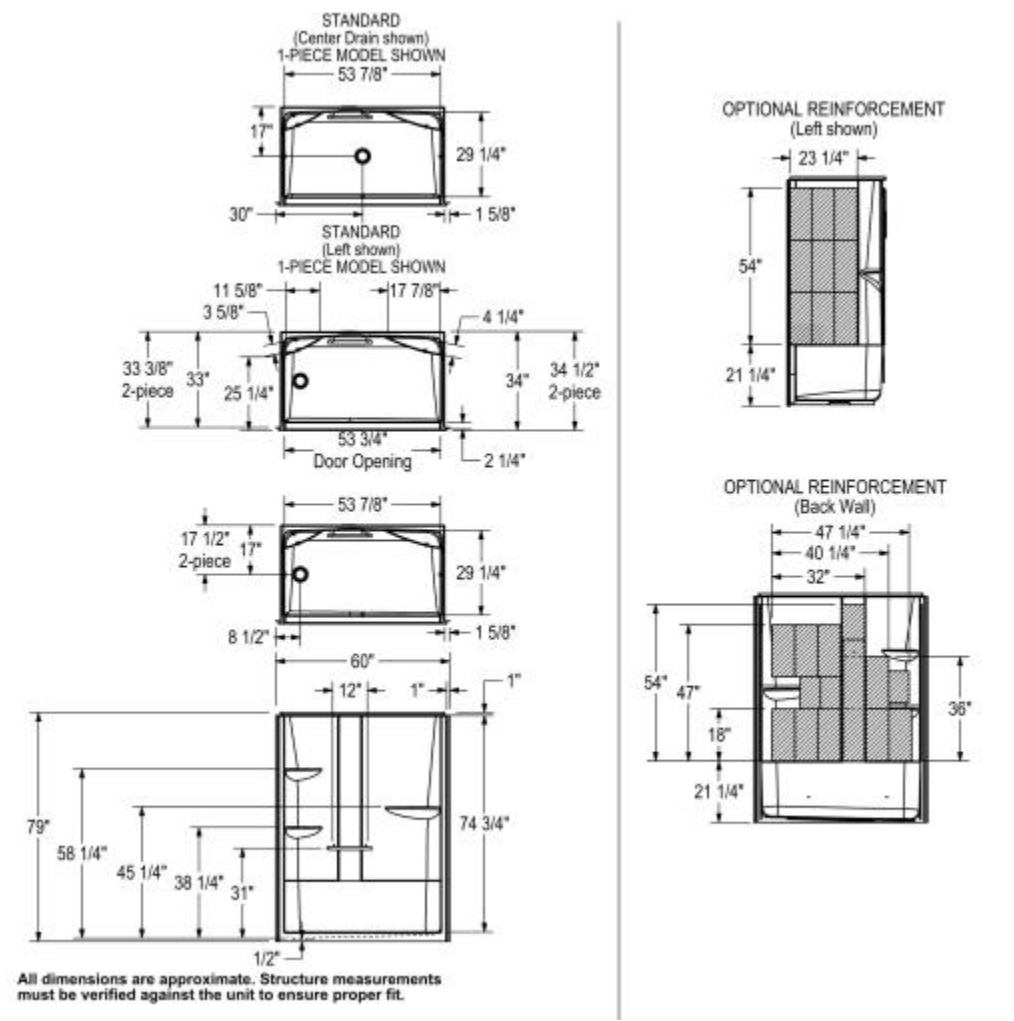
Model number:

107003

Dimensions: 60" x 34" x 79"

Installation: Alcove

Material: Acrylic



Dimensions

60 x 34 x 79 In.
(1524 x 864 x 2007 mm)

Weight

151 lbs - 68 kg

Shape

Rectangular

Pieces

1

Drain location:

Two seats, center drain

Left seat, center drain

Left seat, right drain

No seat, center drain

No seat, left drain

No seat, right drain

Project:

Contractor:

Representative:

Date:

Tel:

Notes: