

DESCRIPTION

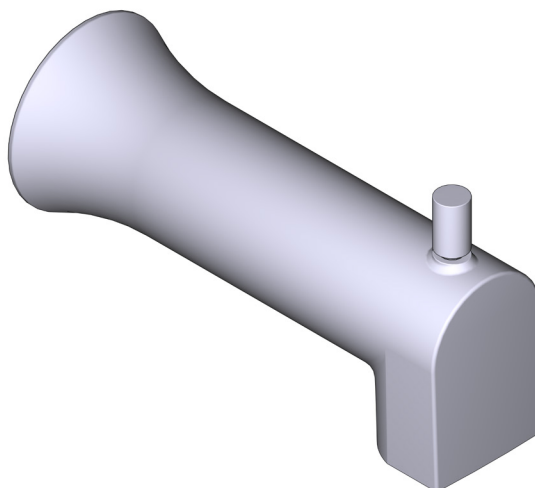
- Metal construction with various finishes identified by suffix
- Designed to be installed on a 1/2" pipe slip fit-CC connection

STANDARDS

- Third party certified to meet ASME A112.18.1/ CSA B125.1 and all applicable requirements referenced therein

WARRANTY

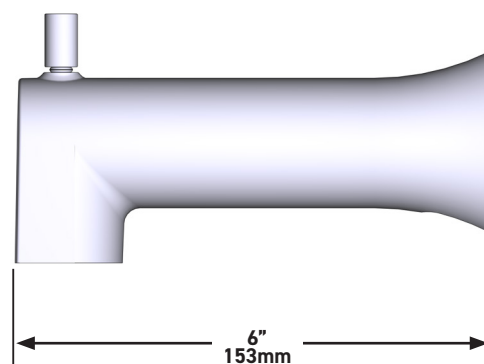
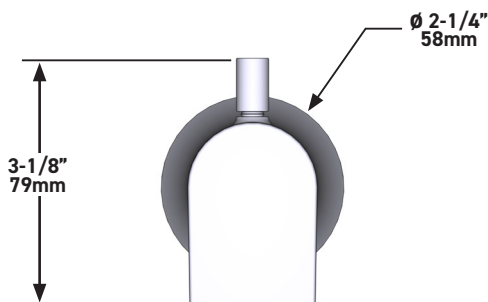
- Lifetime limited warranty against leaks, drips and finish defects to the original homeowner
- 5 year warranty when used in a commercial installation



Genta™

Tub Filler 1/2" Slip fit

MODELS: 187097 series



CRITICAL DIMENSIONS DO NOT SCALE