

NIRON®

Parts Catalog

January 2019



PP-RCT Ball Valve

APPROVED FOR POTABLE WATER



PRODUCT CATALOGUE: PP-RCT BALL VALVE

REVISION: 03

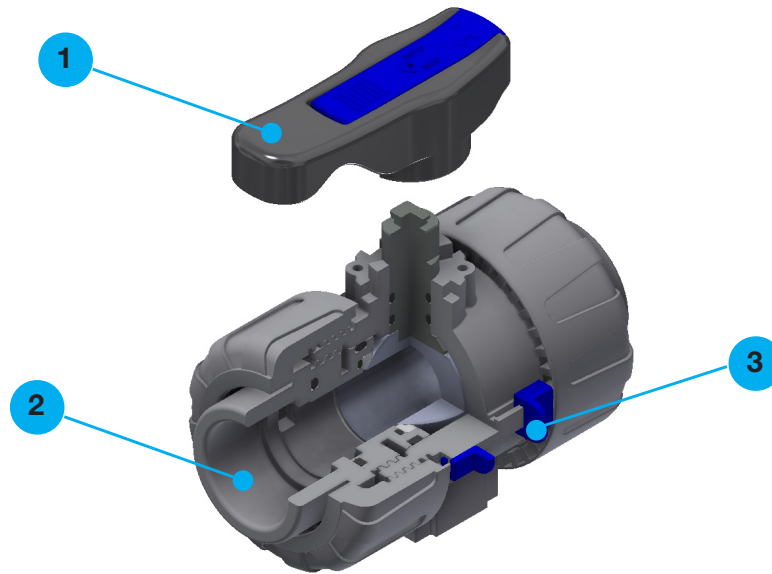
ISSUE DATE: January 2019

INDEX

1	TWO WAY BALL VALVE COMPONENTS	2
2	TECHNICAL SPECIFICATION.....	2
	2.1 PRESSURE VARIATION ACCORDING TO TEMPERATURE.....	3
	2.2 OPERATING TORQUE AT MAXIMUM WORKING PRESSURE....	3
3	THE RANGE	4
4	VALVE ACCESSORIES	6
5	SPARE PARTS	9
6	VALVE COMPONENTS	10
	6.1 EXAMPLE: SOCKET FUSION OR PVC SOLVENT CEMENT JOINT...10	
	6.1 SPIGOT ENDS	11
7	INSTALLATION	12
8	DISMOUNTING AND ASSEMBLY	13
	STANDARD TERMS AND CONDITIONS.....	15

1. TWO WAY BALL VALVE COMPONENTS

item code: NRSPRCT..



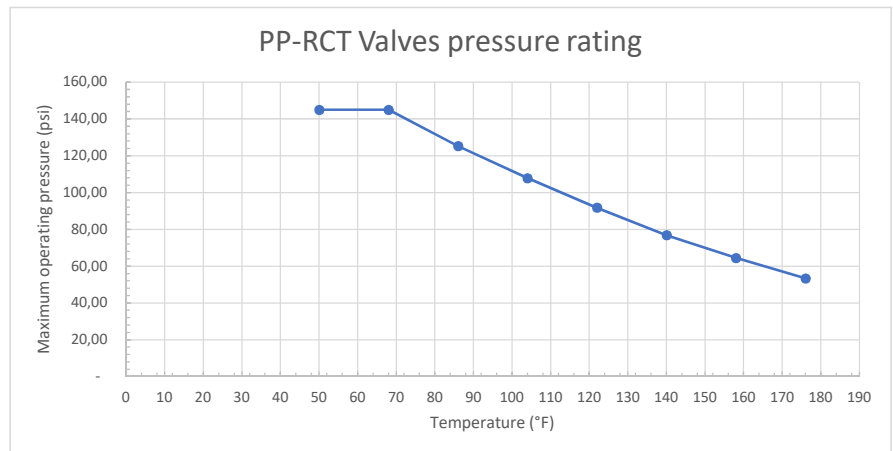
- 1** Ergonomic PP-RCT handle equipped with removable tool to adjust the ball seat carrier.
- 2** Two socket fusion outputs for perfect installation. The valve can also be equipped with spigot outputs.
- 3** Lock system that ensures union nut tightening hold even in severe conditions such as vibrations or heat dilation.

2. TECHNICAL SPECIFICATIONS

CONSTRUCTION	2-way ball valve with locked rings
VALVE MATERIAL	PP-RCT
SEAL MATERIAL	EPDM, (standard size O-Ring) PTFE (ball seats)
SIZE RANGE	Ø ½" - ¾" - 1" - 1¼" - 1½" - 2" socket fusion Ø ¾" - 1" - 1¼" - 1½" - 2" - 2½" spigot end
NOMINAL PRESSURE	PN 10 with water at +68°F
TEMPERATURE RANGE	+32 °F ÷ +176 °F
HYGIENIC LAW AND SPECIFICATIONS	NSF 61 (Drinking Water System Components - Health Effects). D.M. 174: (Italy: Ministry of Health. Regulations concerning materials and objects that can be used in fixed systems for collection, treatment, adduction and distribution of water intended for human consumption).
COUPLING STANDARDS	Coupled with pipes according to EN ISO 15494 (Plastics Piping Systems For Industrial Applications), EN ISO 15874 (Plastics Piping Systems For Hot And Cold Water Installations), ASTM F2389 (Standard Specifications For Pressure-Rated Polypropylene (Pp) Piping Systems)
CONTROL OPTIONS	Manual control

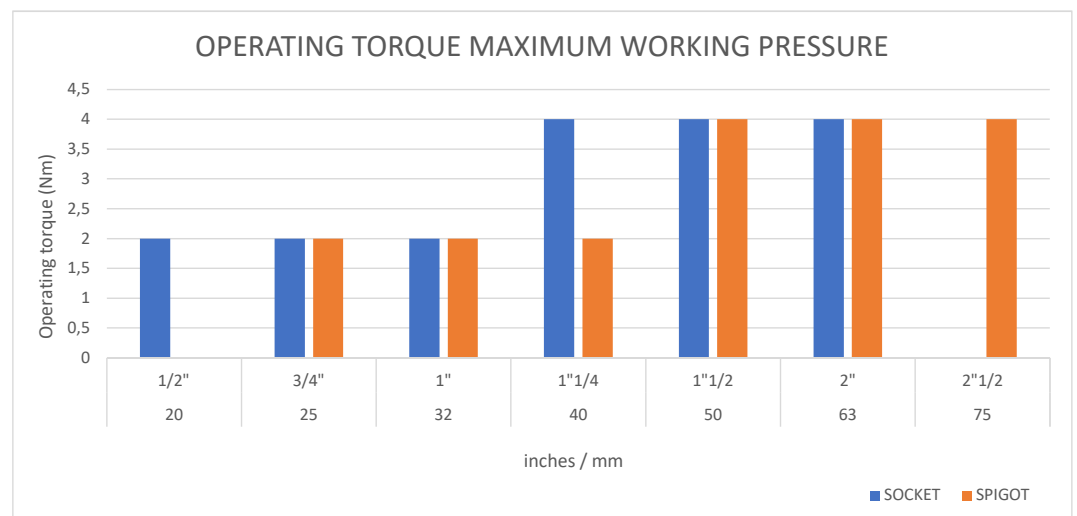
2.1 PRESSURE VARIATION ACCORDING TO TEMPERATURE

The chart shown here shows maximum operating pressures for water transport up to +68°F, while for higher temperatures the maximum pressures must be reduced as shown in the curve.

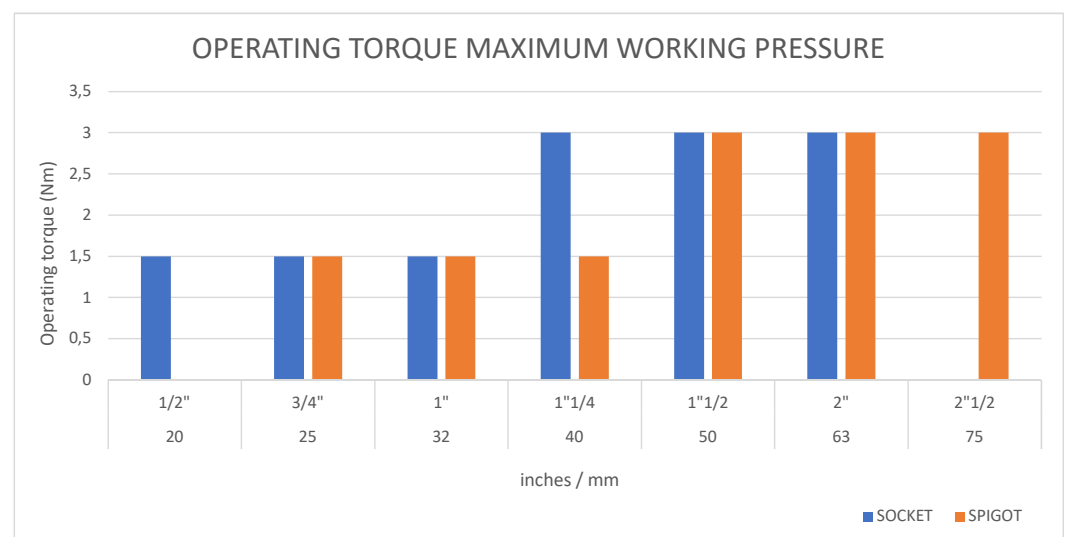


2.2 OPERATING TORQUE AT MAXIMUM WORKING PRESSURE

COLD WATER 73.4°F



HOT WATER 176°F

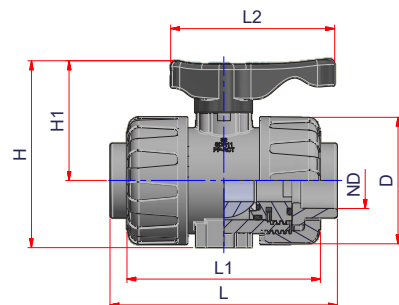


3. THE RANGE



PPR TRUE UNION BALL VALVE PP-RCT SOCKET FUSION ENDS

Material: PP-RCT
Range: ½" ÷ 2"
Note: Available in blue or red version

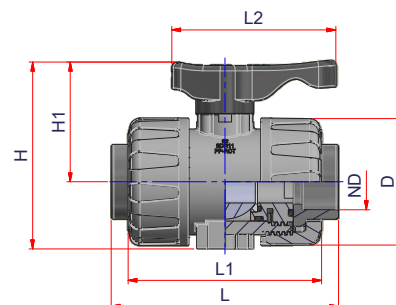


Code	Size	Carton Qty	Body Type	ND	L2	L1	L	D	H1	H
27NRSPPRCT20	½"	1	1"	½" = > 20 mm	3.64	4.29	4.88	2.82	2.70	4.17
27NRSPPRCT25	¾"	1	1"	¾" = > 25 mm	3.64	4.29	4.96	2.82	2.70	4.17
27NRSPPRCT32	1"	1	1"	1" = > 32 mm	3.64	4.29	5.04	2.82	2.70	4.17
27NRSPPRCT40	1 ¼"	1	2"	1 ¼" = > 40 mm	5.28	6.04	6.95	4.80	4.33	6.81
27NRSPPRCT50	1 ½"	1	2"	1 ½" = > 50 mm	5.28	6.04	7.26	4.80	4.33	6.81
27NRSPPRCT63	2"	1	2"	2" = > 63 mm	5.28	6.04	7.76	4.80	4.33	6.81



PPR TRUE UNION BALL VALVE PVC SOLVENT CEMENT JOINT

Material: PP-RCT+ PVC
Range: ½" ÷ 2"
Note: Available in blue or red version



Code	Size	Carton Qty	Body Type	ND	L2	L1	L	D	H1	H
27NRSPPRCT12PVC	½"	1	1"	½"	3.64	4.29	4.88	2.82	2.70	4.17
27NRSPPRCT34PVC	¾"	1	1"	¾"	3.64	4.29	4.96	2.82	2.70	4.17
27NRSPPRCT1PVC	1"	1	1"	1"	3.64	4.29	5.04	2.82	2.70	4.17
27NRSPPRCT114PVC	1 ¼"	1	2"	1 ¼"	5.28	6.04	6.95	4.80	4.33	6.81
27NRSPPRCT112PVC	1 ½"	1	2"	1 ½"	5.28	6.04	7.26	4.80	4.33	6.81
27NRSPPRCT2PVC	2"	1	2"	2"	5.28	6.04	7.76	4.80	4.33	6.81

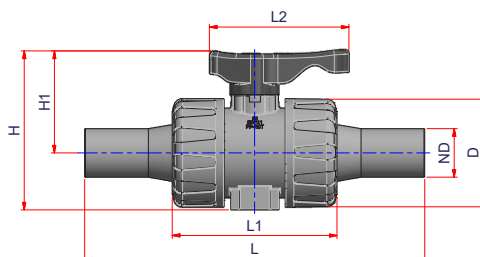


PPR TRUE UNION BALL VALVE PP-RCT SPIGOT ENDS - SDR 11

Material: PP-RCT

Range: ¾" ÷ 2½"

Note: Available in blue or red version



Code	Size	Carton Qty	Body Type	ND	L2	L1	L	D	H1	H
27NRSPRCTS25	¾"	1	1"	¾" => 25 mm	3.64	4.29	9.25	2.82	2.70	4.17
27NRSPRCTS32	1"	1	1"	1" => 32 mm	3.64	4.29	9.02	2.82	2.70	4.17
27NRSPRCTS40	1 ¼"	1	1"	1 ¼" => 40 mm	3.64	4.29	10.67	2.82	2.70	4.17
27NRSPRCTS50	1 ½"	1	2"	1 ½" => 50 mm	5.28	6.04	12.00	4.80	4.33	6.81
27NRSPRCTS63	2"	1	2"	2" => 63 mm	5.28	6.04	13.58	4.80	4.33	6.81
27NRSPRCTS75	2 ½"	1	2"	2 ½" => 75 mm	5.28	6.04	13.54	4.80	4.33	6.81

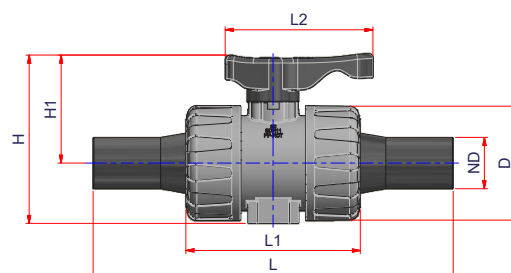


PPR TRUE UNION BALL VALVE PE SPIGOT ENDS - SDR 11

Material: PP-RCT

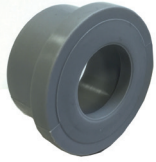
Range: ¾" ÷ 2½"

Note: Available in blue or red version



Code	Size	Carton Qty	Body Type	ND	L2	L1	L	D	H1	H
27NRSPRCTS34PE	¾"	1	1"	¾"	3.64	4.29	9.25	2.82	2.70	4.17
27NRSPRCTS1PE	1"	1	1"	1"	3.64	4.29	9.02	2.82	2.70	4.17
27NRSPRCTS114PE	1 ¼"	1	1"	1 ¼"	3.64	4.29	10.67	2.82	2.70	4.17
27NRSPRCTS112PE	1 ½"	1	2"	1 ½"	5.28	6.04	12.00	4.80	4.33	6.81
27NRSPRCTS2PE	2"	1	2"	2"	5.28	6.04	13.58	4.80	4.33	6.81
27NRSPRCTS212PE	2 ½"	1	2"	2 ½"	5.28	6.04	13.54	4.80	4.33	6.81

4. VALVE ACCESSORIES



PP-RCT WELDING COLLAR SOCKET FUSION END

Material: PP-RCT
Range: ½" ÷ 2"



WELDING COLLAR PVC SOLVENT CEMENT JOINT

Material: PVC
Range: ½" ÷ 2"

Code	Body Type	Size	Carton Qty
27NAPP20	1"	½" = > 20 mm	10
27NAPP25	1"	¾" = > 25 mm	10
27NAPP32	1"	1" = > 32 mm	10
27NAPP40	2"	1 ¼" = > 40 mm	6
27NAPP50	2"	1 ½" = > 50 mm	6
27NAPP63	2"	2" = > 63 mm	6

Code	Body Type	Size	Carton Qty
27NAPVC12	1"	½"	10
27NAPV34	1"	¾"	10
27NAPVC1	1"	1"	10
27NAPVC114	2"	1 ¼"	6
27NAPVC112	2"	1 ½"	6
27NAPVC2	2"	2"	6



PP-RCT WELDING COLLAR SPIGOT ENDS

Material: PP-RCT
Range: ¾" ÷ 2½"



PE WELDING COLLAR SPIGOT ENDS

Material: PP-RCT
Range: ¾" ÷ 2½"

Code	Body Type	Size	Carton Qty
27NAPPS25	1"	¾" = > 25 mm	10
27NAPPS32	1"	1" = > 32 mm	10
27NAPPS40	1"	1 ¼" = > 40 mm	10
27NAPPS50	2"	1 ½" = > 50 mm	6
27NAPPS63	2"	2" = > 63 mm	6
27NAPPS75	2"	2 ½" = > 75 mm	6

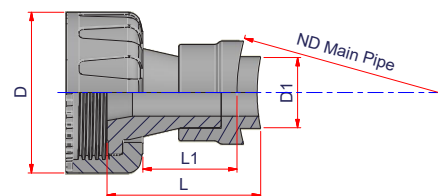
Code	Body Type	Size	Carton Qty
27NAPES34	1"	½"	10
27NAPES1	1"	¾"	10
27NAPES114	1"	1"	10
27NAPES112	2"	1 ¼"	6
27NAPES2	2"	1 ½"	6
27NAPES212	2"	2"	6



INSTABRANCH™ WELDING SOCKLET ADAPTER FOR PP-RCT VALVE

Material: PP-RCT

Range: 2" ÷ 24"



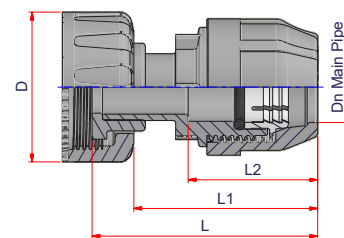
Code	Body Type	ND Main Pipe	D1	D	L1	L
27NARS32GS6375	1"	2" => 63 mm 2 1/2" => 75 mm	1.26	2.82	1.65	2.83
27NARS32GS90110125	1"	3" => 90 mm 4" => 110 mm 5" => 125 mm	1.26	2.82	1.65	2.74
27NARS32GS160200	1"	6" => 160 mm 8" => 200 mm	1.26	2.82	1.65	2.70
27NARS32GS250315	1"	10" => 250 mm 12" => 315 mm	1.26	2.82	1.65	2.68
27NARS32G2355630	1"	14" ÷ 24" => 355-630 mm	1.26	2.82	1.65	2.68
27NARS63GS110	2"	4" => 110 mm	2.48	4.80	2.76	4.61
27NARS63GS125	2"	5" => 125 mm	2.48	4.80	2.76	4.51
27NARS63GS160	2"	6" => 160 mm	2.48	4.80	2.76	4.37
27NARS63GS200	2"	8" => 200 mm	2.48	4.80	2.76	4.31
27NARS63GS250	2"	10" => 250 mm	2.48	4.80	2.76	4.25
27NARS63GS315	2"	12" => 315 mm	2.48	4.80	2.76	4.21
27NARS63GS355450	2"	14" ÷ 18" => 355 ÷ 450 mm	2.48	4.80	2.76	4.17
27NARS63GS500630	2"	20" ÷ 24" => 500 ÷ 630 mm	2.48	4.80	2.76	4.17



COMPRESSION FITTING ADAPTER FOR PP-RCT VALVE

Material: PP-RCT

Range: 1/2" ÷ 2"



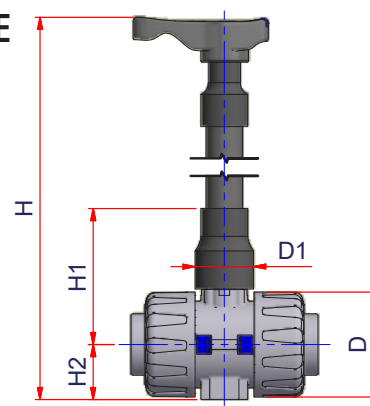
Code	Body Type	ND Main Pipe	D	L	L1	L2
27NARS32K20	1"	1/2" => 20 mm	2.82	3.74	2.92	2.07
27NARS32K25	1"	3/4" => 25 mm	2.82	3.78	2.99	2.15
27NARS32K32	1"	1" => 32 mm	2.82	4.25	3.46	2.46
27NARS63K40	2"	1 1/4" => 40 mm	4.80	5.98	4.88	3.15
27NARS63K50	2"	1 1/2" => 50 mm	4.80	6.26	5.16	3.54
27NARS63K63	2"	2" => 63 mm	4.80	7.15	5.06	4.33

STEM EXTENSION FOR BALL VALVE LONG VERSION



Material: PVC

Notes: Article composed by nr.2 extensions
+ nr. 1 PVC Pipe (length 19.69in) + handle



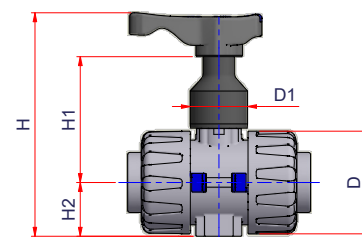
Code	Body Type	Carton Qty	D	H1	H2	H min.	H max.	D1
27NRSEXL32	1"	1	2.82	3.46	1.50	8.07	26.26	1.57
27NRSEXL63	2"	1	4.80	5.28	2.48	11.30	29.49	2.48

STEM EXTENSION FOR BALL VALVE SHORT VERSION



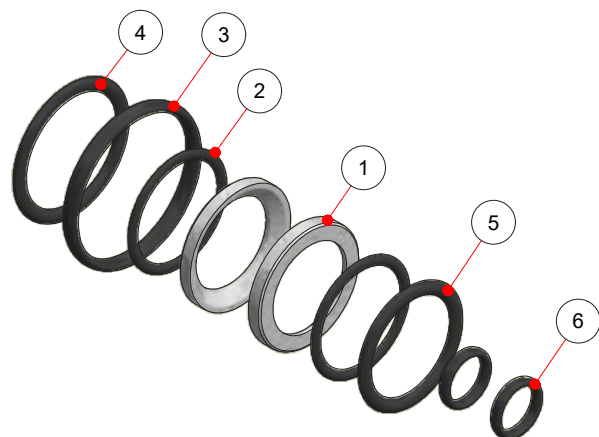
Material: PVC

Notes: Article composed by nr.1 extension + handle



Code	Body Type	Carton Qty	D	H1	H2	H	D1
27NRSEXS32	1"	1	2.80	3.46	1.50	6.15	1.57
27NRSEXS63	2"	1	4.80	5.28	2.48	9.65	2.48

5. SPARE PARTS



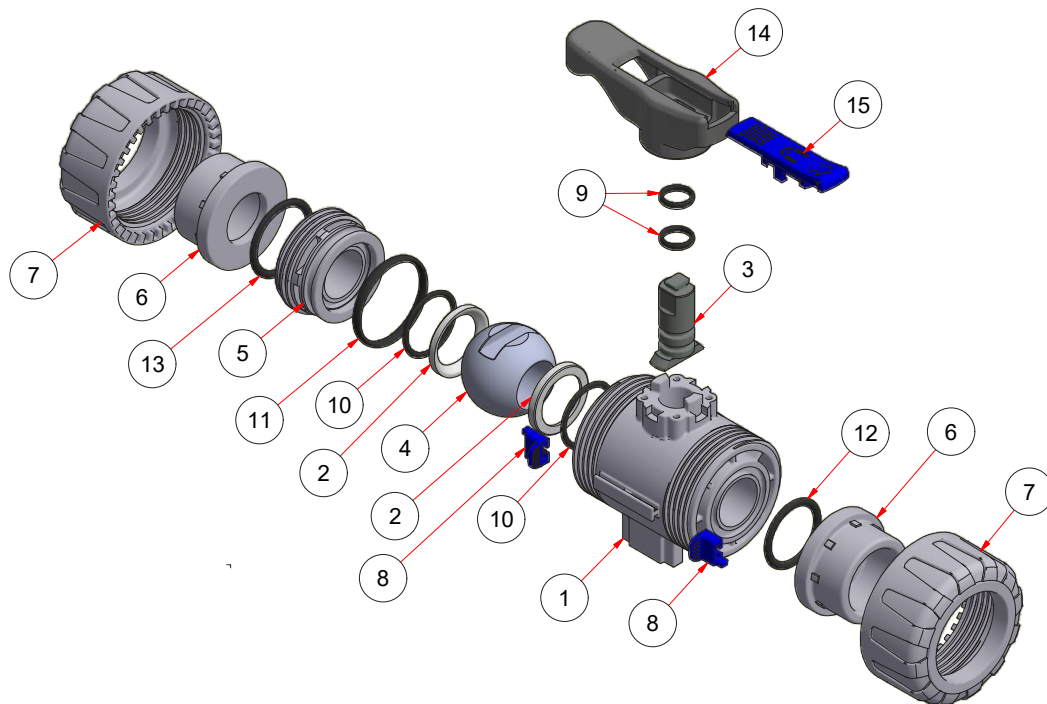
GASKET KIT

Code	Body Type	Carton Qty
00RSPPRCKIT32	1"	1 KIT
00RSPPRCKIT63	2"	1 KIT

	DESCRIPTION	MATERIAL	Q.TY
①	Teflon ball seat	PTFE F391	2
②	Rod seal o-ring	EPDM 70sh Perox	2
③	Teflon seat o-ring	EPDM 70sh Perox	2
④	Radial seal o-ring	EPDM 70sh Perox	1
⑤	Socket seal o-ring	EPDM 70sh Perox	1
⑥	O-ring seal (side internal screw nut)	EPDM 70sh Perox	1

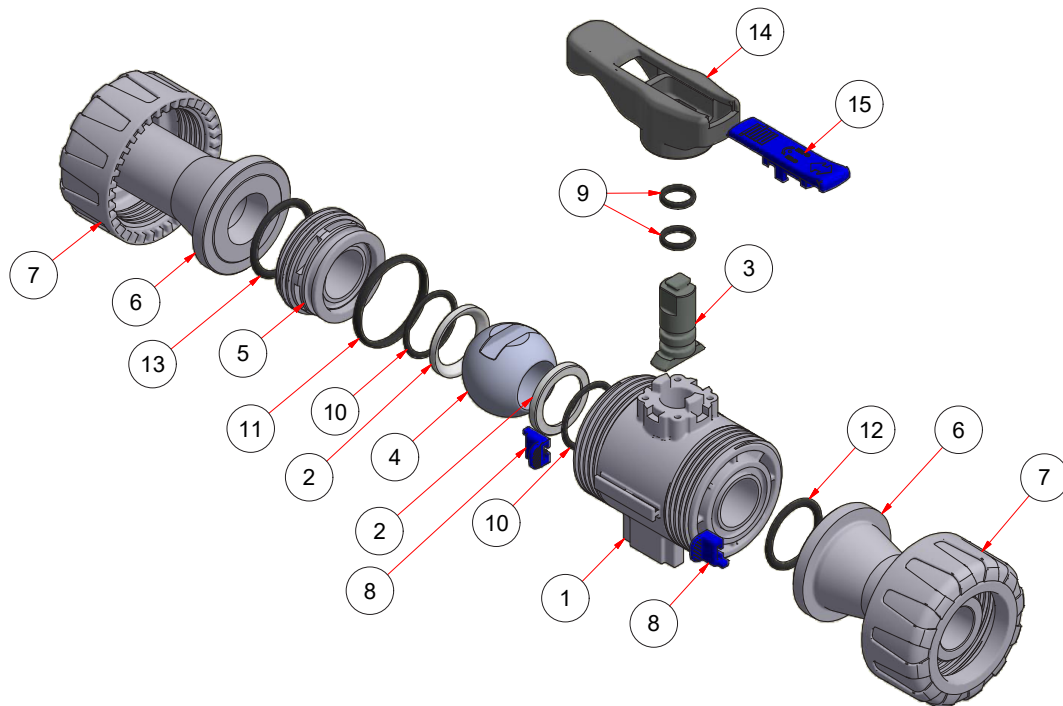
6. VALVE COMPONENTS

6.1. EXAMPLE: SOCKET FUSION OR PVC SOLVENT CEMENT JOINT



	DESCRIPTION	MATERIAL	Q.TY
①	Body valve	PP-RCT	1
②	Teflon ball seat	PTFE F391	2
③	Command rod	50% PP-RCT+50% PP-H FV 30%	1
④	Ball	25% PP-RCT+75% PP-H TALCO 20%	1
⑤	Internal screw nut	PP-RCT	1
⑥	Welding collar	PP-RCT or PVC	2
⑦	Outer ring	PP-RCT	2
⑧	Block cursor	POM-C	2
⑨	Rod seal o-ring	EPDM 70sh Perox	2
⑩	Teflon seat o-ring	EPDM 70sh Perox	2
⑪	Radial seal o-ring	EPDM 70sh Perox	1
⑫	Socket seal o-ring	EPDM 70sh Perox	1
⑬	O-ring seal (side internal screw nut)	EPDM 70sh Perox	1
⑭	Handle	PP-RCT	1
⑮	Handle Insert	POM-C blue or red	1

6.2. EXAMPLE: BUTT FUSION WELDING



	DESCRIPTION	MATERIAL	Q.TY
①	Body valve	PP-RCT	1
②	Teflon ball seat	PTFE F391	2
③	Command rod	50% PP-RCT+50% PP-H FV 30%	1
④	Ball	25% PP-RCT+75% PP-H TALCO 20%	1
⑤	Internal screw nut	PP-RCT	1
⑥	Stub end long spigot	PP-RCT or PE	2
⑦	Outer ring	PP-RCT	2
⑧	Block cursor	POM-C	2
⑨	Rod seal o-ring	EPDM 70sh Perox	2
⑩	Teflon seat o-ring	EPDM 70sh Perox	2
⑪	Radial seal o-ring	EPDM 70sh Perox	1
⑫	Socket seal o-ring	EPDM 70sh Perox	1
⑬	O-ring seal (side internal screw nut)	EPDM 70sh Perox	1
⑭	Handle	PP-RCT	1
⑮	Handle Insert	POM-C blue or red	1

7. INSTALLATION

Before proceeding with installation please follow these instructions carefully:

- 1) Check that the pipes to be connected to the valve are aligned in order to avoid mechanical stress on the threaded joints.
- 2) To release the outer rings, axially move the two block cursors and unlock the rings. Then uncrew it in the counter-clockwise direction.
- 3) Unscrew the outer rings and insert them on the pipe segments.
- 4) Weld the welding collars onto the pipe ends.
- 5) Position the body's valve between the welding collars and fully tighten the outer ring manually by rotating clockwise without using wrenches or other tools that could damage the outer ring surface.
- 6) Lock the outer rings with the block cursor.

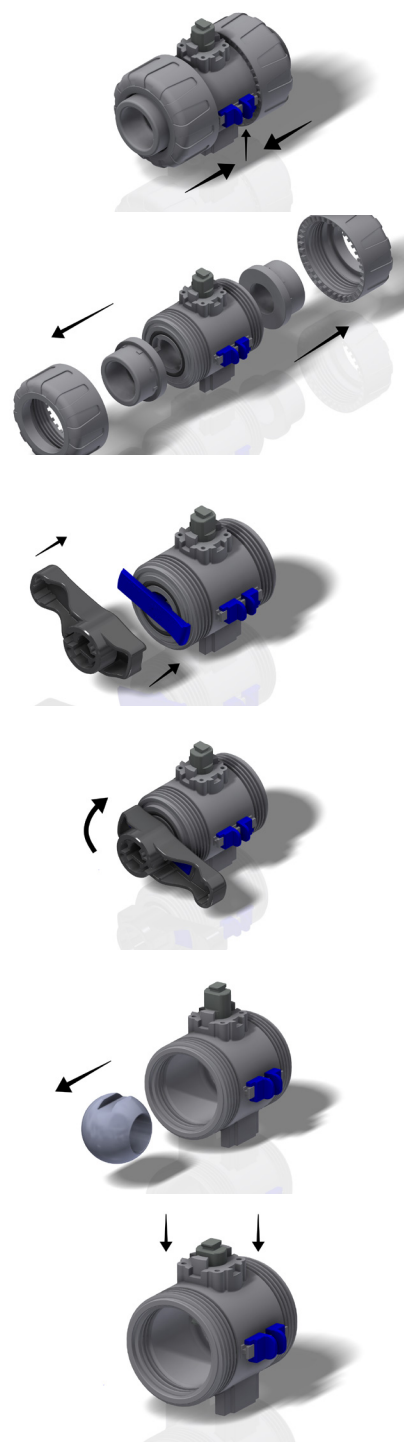
WARNING **Always avoid sudden closing operations and protect the valve from accidental operations.**



8. DISMOUNTING AND ASSEMBLY

Isolate the valve from the line (release the pressure and empty the pipeline).

- 1) Unlock the outer rings with the block cursors.
- 2) Fully unscrew the outer rings and remove the welding collars.
- 3) Before dismounting, hold the valve in a vertical position and open it 45° to drain any liquid that might have remained inside.
- 4) After closing the valve, remove the handle insert and push it into the corresponding recesses on the internal screw nuts. Then push the handle on the handle insert and unscrew clockwise.
- 5) Press the ball from the opposite side of the internal screw nuts and extract it.
- 6) Press the command rod inwards until it comes out of the body.
- 7) Remove the O-rings from the PTFE ball seats by extracting them from their grooves.



For the assembly, follow the previous steps in the opposite direction (7-1).

Note: during assembly operations it is recommended to lubricate the rubber seals. Mineral oils are not recommended for this task as they react aggressively with EPDM rubber.



STANDARD TERMS AND CONDITIONS

FREIGHT CONDITIONS: All NIRON orders shipped domestically are shipped F.O.B. North American Distribution Location. All NIRON Italy orders shipped from Italy are shipped F.O.B. Busto Arsizio (VA) Italy. Once the material leaves our dock it becomes the property and responsibility of the consignee. If freight is lost, or damaged, all freight claims must be filed by the consignee. When shipping to a job site, freight will be third party billed. CUSTOMERS WILL HAVE ONE WEEK FROM THE DATE OF RECEIPT OF AN ORDER TO REPORT LOST, MISSING OR DAMAGED MATERIALS FROM THE SHIPMENT.

FULL FREIGHT ALLOWANCE: To meet the full freight allowance, NIRON orders must be for immediate complete shipment to one location within the contiguous United States or Canada. Each shipment for a project will be subject to the schedule below based on the amount of the follow-up order (i.e. the amount is not cumulative if follow-up orders are placed for the same project). Shipments to Alaska, Puerto Rico, Hawaii or for export are not freight allowed, except for the mainland portion of the freight. For shipments to Alaska, Hawaii, Puerto Rico or for export, the freight allowances shown below, for qualified items, are for shipment to East Coast, Gulf Coast or West Coast Ports only.

For orders totaling between \$0 and \$30,000 involving fittings-only and/or small equipment, the freight cost will be the actual amount billed. Orders greater than \$30,000 net, involving fittings-only and/or small equipment, will be freight allowed.

For orders totaling between \$0 and \$50,000 involving pipe, the freight cost will be the actual amount billed. Orders greater than \$50,000 net, involving pipe, will be freight allowed.

The above freight terms do not apply to air freight shipments or expedited shipments. Air freight shipments and expedited forms of delivery will be negotiated and agreed to in each circumstance. Customers may alternatively arrange for their own transportation, or may arrange for the freight to be billed to a third party account by specifying this on the purchase order. Next day air orders must be received by 2:00 p.m. EST to be accepted for next day service.

For pipe shipments involving less than standard full package (bag) quantities of any given size, a 10% surcharge shall apply, plus the cost for providing protective packaging and the full transportation cost. For any pipe shipments involving full bag quantities, but less than a full lift quantity, no surcharge shall apply, however Nupi will charge for any and all protective packaging that is required in order to maintain the integrity of the pipe during shipping and allow for shipment by standard over-the-road shipping carriers. For pipe orders that are less than full freight allowed, the full freight cost shall be charged.

The minimum accepted net order amount shall be \$100 in all circumstances. For orders placed that are less than \$100, the net value of the order shall be increased by an amount so that the total order will be billed at \$100 plus the applicable amount for shipping percentage based on \$100 net order value. The customer will have 24 hours after notice of order confirmation to increase the amount or type of parts being ordered to be greater than or equal to \$100 to avoid the paying the surcharge.

PAYMENT TERMS: All invoices are due net 30 days from the date of the invoice, with all Past Due accounts subject to a service charge of 1.5% per month.

RETURN POLICY: All orders are non-cancellable. Pipe is non-returnable. Fittings may be returned up to a maximum of 10% of the value of fittings sold on an order, subject to a 20% restocking charge if the fittings are returned in fully resalable condition. Returns for fittings must be pre-approved in writing by Nupi Americas prior to returning. Freight cost for the return is not included and must be paid by the company requested the return.

ORDER ACCEPTANCE: No price list, literature, catalogue, website or other material describing our products is to be construed as an offer to sell same. Orders are subject to acceptance by us at our offices in Houston, TX. Your order, when shipped by us, shall be the complete contract between us, subject to, and incorporating therein, the terms and conditions, herein set forth, and any provisions or terms contained in the order submitted to us that are not consistent with our terms and conditions shall not be valid. Prices and discounts contained in any of our price lists or posted on our website are subject to change without notice.

LIMITED WARRANTY: Nupi Americas warrants that products sold by it which are included in its NIRON Piping System shall be of good materials and workmanship and free from functional defects for a period of thirty (30) years from the date of sale, excepting valves, gaskets and o-rings; products other than pipes and fittings shall be of good materials and workmanship and free from functional defects for a period of one (1) year from the date of sale; provided that such products are properly installed in accordance with the specifications and published instructions of Nupi Americas by qualified installers who have been trained and certified by Nupi Americas or its authorized representatives. These respective warranties shall become immediately null and void if the products to which they apply due to any of the following: (i) are employed in applications

not recommended by Nupi Americas; (ii) are installed by anyone other than an installer trained and certified by Nupi Americas or its authorized representatives; (iii) were installed in a manner which fails to comply with written installation instructions of Nupi Americas; (iv) were installed in a manner that does not comply with common installation or use practices and existing building and plumbing codes and legal requirements; (v) was not at all times used in a manner consistent with its intended use; (vi) was not at all times used in installations and environments acceptable to its material and design specifications; (vii) was modified, altered or repaired by anyone other than the Seller; (viii) was not properly subjected to and passed common testing methods (including pressure the testing recommendations of Nupi Americas and the authority having local jurisdiction) immediately after the product's installation and before the product is put into service. In the event of a system malfunction or leak caused by defective Nupi Americas' warranted materials (and not by incorrect installation, incorrect handling procedures or by jobsite or installation damage), a reasonable amount will be allowed for repair materials and repair labor as long as the amount is pre-approved by Nupi Americas. In order to qualify for a warranty remedy described in the previous sentence, you must contact Nupi Americas in advance and receive a written authorization for this remedy from an authorized Nupi Americas' representative. Repair materials, repair labor and freight expenses not authorized in writing in advance by Nupi Americas in this way will not be compensated. In the event of a leak occurring in a factory manifold, you may contact Nupi Americas for either a free replacement manifold or any parts that are reasonably needed to repair such a leak (freight prepaid). Note that Nupi Americas limits its warranty to its piping, valves and accessories, fittings, manifolds and field connections that are properly made in accordance with the written instructions of Nupi Americas by an installer who is trained and certified by Nupi Americas or its authorized representatives, subject to the other limitations described above. The copper portion of copper transition parts are not included in these warranties and are instead subject to a separate limited lifetime warranty from the original manufacturer that is available upon request.

Evidence of tampering, mishandling, misuse or abuse, neglect, accidental damage, freeze damage or unauthorized repairs that cause damage to Nupi Americas' warranted products will void any warranty coverage for those particular products.

Nupi Americas provides a complete plumbing system offering so that it is possible to complete an installation with Nupi Americas' products. However, it is possible that other manufacturers' piping and/or fittings may be installed in any given installation. Providing that the piping and/or fittings are manufactured to the same ASTM and CSA standards governing Niron's products, and have been certified by a recognized third-party testing agency, the NIRON product in the given installation will continue to be covered under this warranty. In the event of a system malfunction or leak that has other piping and/or fitting manufacturers' components installed within the failed system, Nupi Americas will be responsible only for proven defects in material or workmanship in the Nupi Americas products. Products manufactured by another company should be reported to that manufacturer for its warranty response.

These limited warranties are in lieu of all other warranties, express or implied, including, without limitation, those concerning merchantability or fitness for a particular purpose. These limited warranties are also in lieu of any other possible liabilities of Nupi Americas, whether alleged to have arisen by agreement or by operation of law, respecting the sale, installation, use or function of Nupi Americas' products, including, without limitation, claims of negligence, gross negligence, strict liability or any other tort.

LIMITATION OF LIABILITY: If a claim arises as the result of a product defect, Nupi Americas shall cover losses caused to third parties for property damages and bodily injury or incidental damages in those situations where Nupi America's Liability Insurance Policy provides coverage for such losses, up to the coverage amounts provided in such policy and subject to all of the terms, conditions and exclusions of such policy (Policy ITCANY05134 Issued by ACE European Group, Ltd., A Chubb Company).

No person is authorized by Nupi Americas to accept for it any other liability of any kind in connection with the sale or use of products sold and/or marketed by it.

All requests and notices under this Warranty shall be directed to: Nupi Americas, Attn: Customer Service 314 Commerce Parkway, Early Branch, SC 29916; Tel: 803-398-3579, Fax: 803-398-3639

SHIPPING DATES – DELAYS – SHORTAGE CLAIMS: Promises of shipping dates are estimates, and as such, cannot be guaranteed. Nupi Americas will not be liable for any delay in a delivery. Any claims for shipping errors, shortages or defects must be made to Nupi Americas within 24 hours of receipt of the goods. Buyer shall be required to make timely payment to seller of any amount which is undisputed, or not subject to such claims.

TAXES: Any sales or manufacturers' taxes are to be paid by the buyer, including those imposed under any future statutes.



Nupi Americas, Inc.

1511 Superior Way
Houston - TX 77039 - U.S.A.
ph. +1 281 590 4471
fax +1 281 590 5268

314 Commerce Parkway
Early Branch - SC 29916 - U.S.A.
ph. +1 803-398-3579
fax: +1 803 398 3639

info@nupiamericas.com
www.nupiamericas.com

