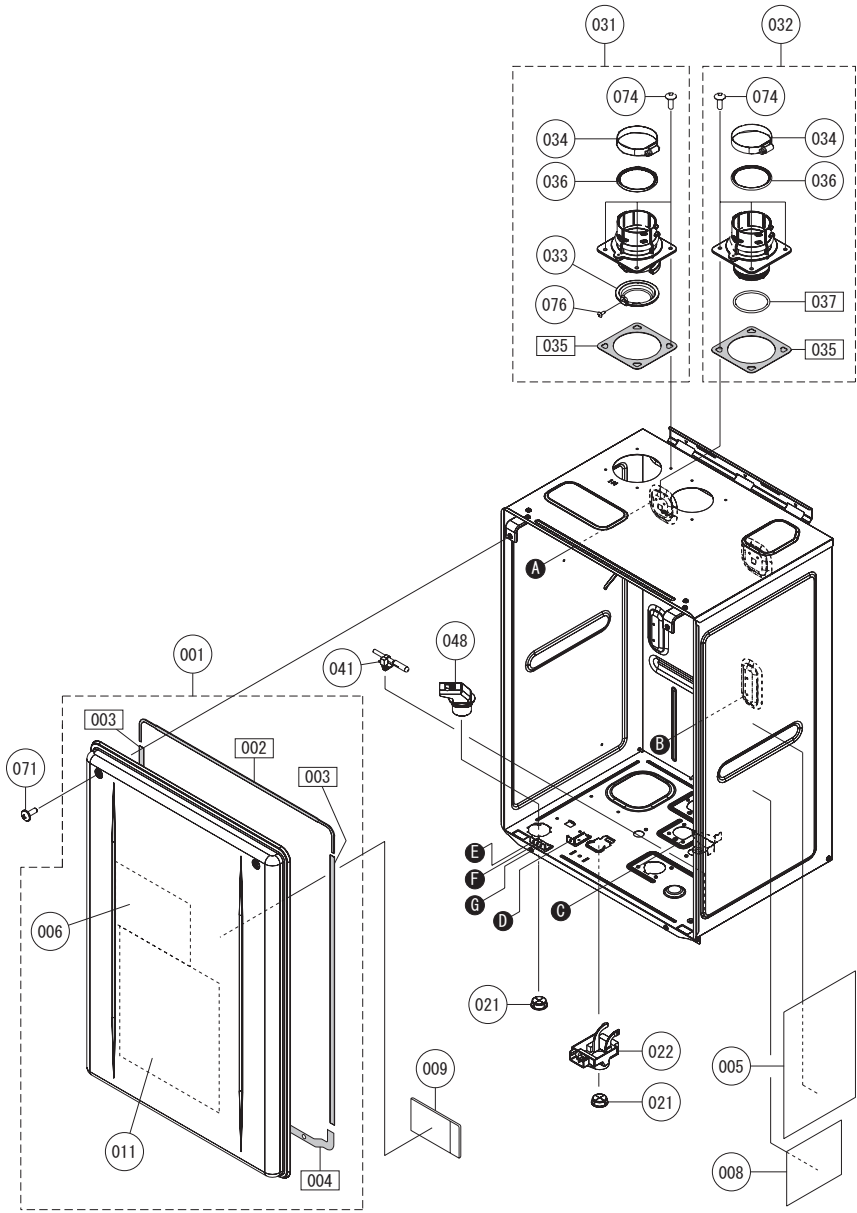


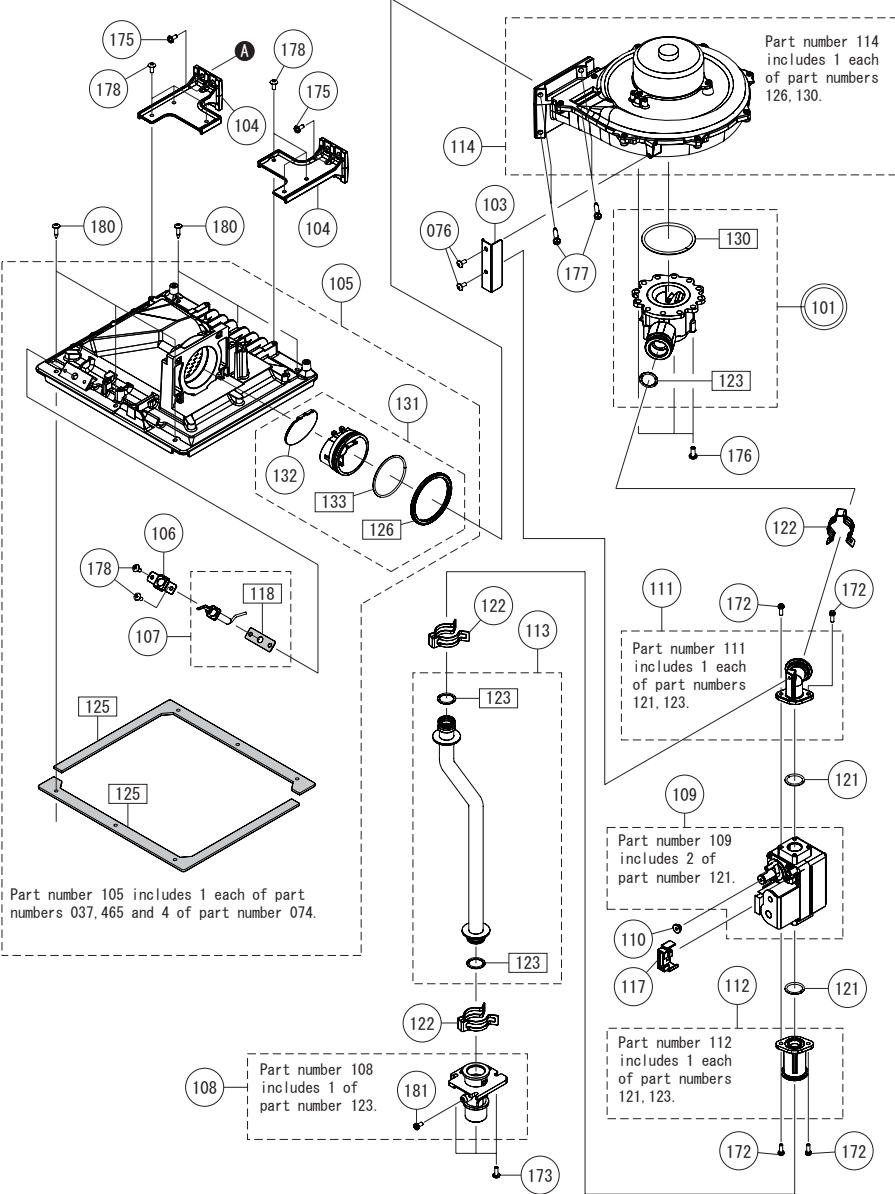
External outfitting NRCR111DV (GQ-C3260WXQ-FF US)  
NRCR92DV (GQ-C2660WXQ-FF US)  
PR199DV (GQ-C3260WXQ-FF PB US)



External outfitting NRCR111DV (GQ-C3260WXQ-FF US)  
NRCR92DV (GQ-C2660WXQ-FF US)  
PR199DV (GQ-C3260WXQ-FF PB US)

Part Nos	Part Names	Order Nos	Q'ty/unit
001	Front Cover - GQ-C3260WX-FF US	SKJ72NM	1<NRCR Series>
002	Front Cover - GQ-C3260WXQ-FF PB US	SKJ722S	1<PR Series>
003	Gasket - Front Cover Top	CVAL011	2
004	Gasket - Front Cover Sides	CVAL004	2
006	Gasket - Front Cover Top and Bottom	APL015	1
005	Label - Outside Front Cover Caution Label	ELV0003	1
008	Label - Inside Front Cover Caution Label	EYSK006	1
009	Label - Rating Plate DV/00	FDC151	1
011	Parts List/Technical sheet	FDC251	1
021	Wiring Diagram	FDR002	1
022	Wire Grommet - Rubber	CXPA026	2
031	External Remote Terminal Block	EBTA017	1
032	Intake Flue w/ O-Ring and Gasket (SET)	SKJ71M1	1
033	Exhaust Flue w/ O-Ring and Gasket (SET)	SKJ71M2	1
034	Filter - Intake Air	FABF101	1
035	Clamp - Exhaust Pipe	FABF108	2
036	Gasket - Exhaust Flue	FABL101	2
037	O-Ring - Exhaust Pipe	FABL102	2
038	O-Ring - Exhaust Flue	FABL103	1
041	Thermistor - Air	EZWH101	1
071	Screw - Front Cover with washer MAX12 S410		
074	Screw - Pre-Coated Machined MAX12 S410		
075	Screw - Long Mounting Machine MAX12 S430		
076	Screw - Remote Terminal MAX10 S430		

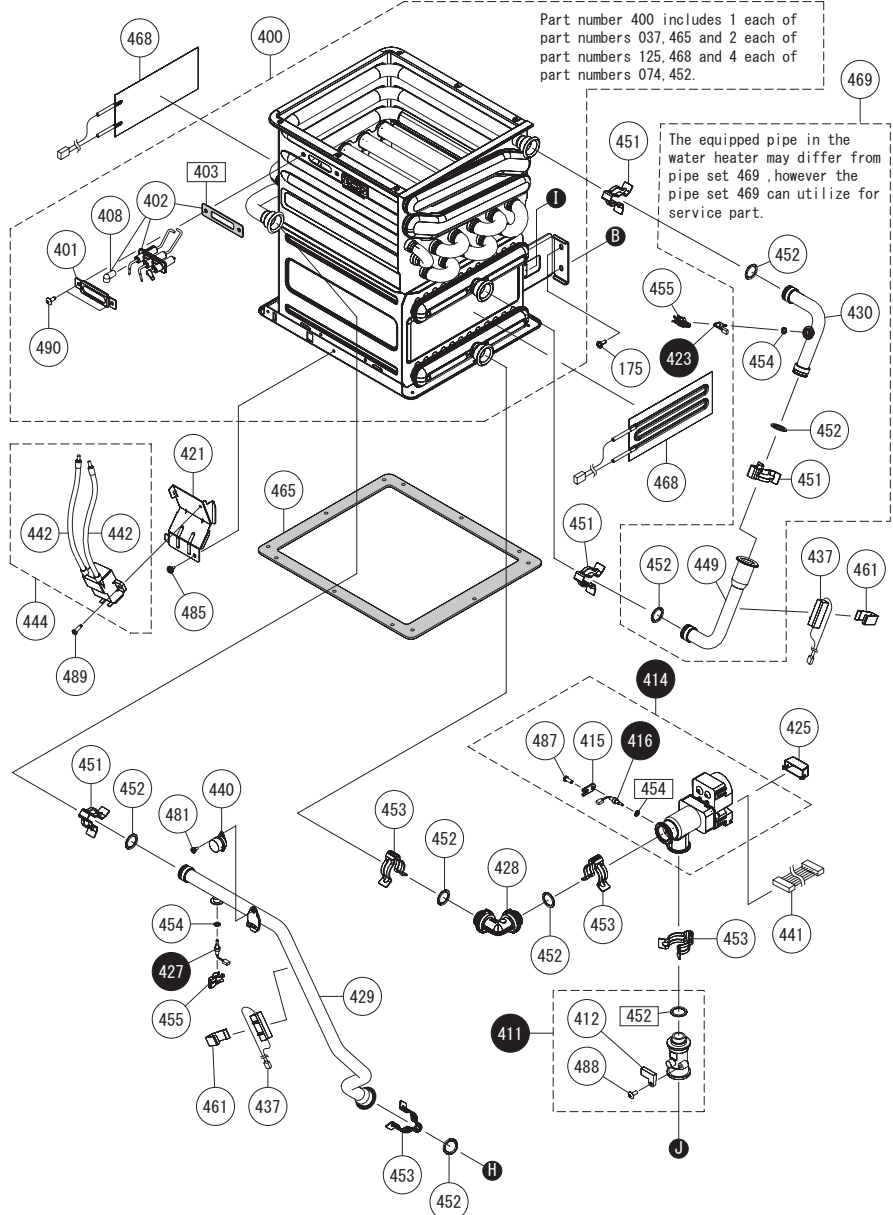
Combustion unit and gas route NRCR111DV (GQ-C3260WXQ-FF US)  
NRCR92DV (GQ-C2660WXQ-FF US)  
PR199DV (GQ-C3260WXQ-FF PB US)



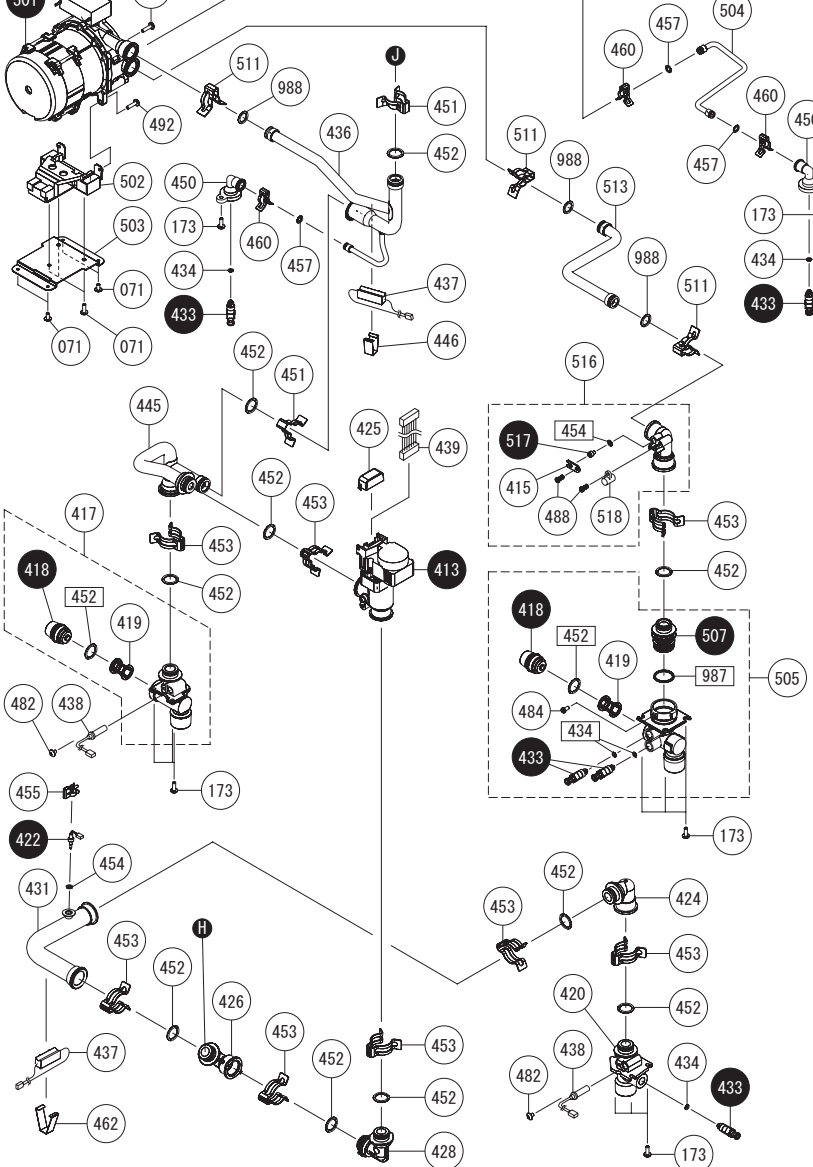
Combustion unit and gas route NRCR111DV (GQ-C3260WXQ-FF US)  
NRCR92DV (GQ-C2660WXQ-FF US)  
PR199DV (GQ-C3260WXQ-FF PB US)

Part Nos	Part Names	Order Nos	Q'ty/unit
101	Venturi 199kbtuh - LP (SET)	SKJ72N2	1<LP>
103	Venturi 199kbtuh - NG (SET)	SKJ72N3	1<NG>
104	Mounting Plate - Gas Valve	FDA0101	1
105	Mounting Plate - Chamber	FAB0031	2
106	Burner Chamber (SET)	SKJ72M4	1
107	Flame Lifting Detection w/ Gasket	FDA0314	1
108	Flame Lifting Detection w/ Screw (SET)	SKJ72D0	1
109	Inlet Gas Connection w/ Screw (SET)	SKJ71UX	1
110	Gas Valve (SET)	SKJ71W8	1
111	Cover - Offset Adjustment	FAB0311	1
112	Gas Valve Outlet Connector (SET)	SKJ72MR	1
113	Gas Valve Inlet Connector (SET)	SKJ71VX	1
114	Gas Pipe (SET)	SKJ72MS	1
117	Fan Motor w/ Housing	SKJ72MS	1
118	Cover - Gas Valve Connector	FAB0332	1
121	Gasket - Flame Lifting Detection	FDA0200	1
122	O-Ring - P20	2192004	2
123	"C" Clamp - 16B	6340407	3
125	O-Ring - P18	2110903	3
126	Gasket - Burner	FDA0202	2
127	Gasket - Chamber Inlet	FDA004	1
130	O-Ring - Venturi, 60	FABL017	1
131	Non-return valve (SET)	SKJ72Y1	1
132	Non-return valve cap	FDA0042	1
133	O-ring - Non-return valve	FDA005	1
172	Screw - Long Mounting Machine with Spring Washer MAX12 S430		
173	Screw - Long Machine MAX12 S410		
175	Screw - Medium Machine 4X10 S410		
176	Screw - Mounting Machine MAX12 S430		
177	Screw - Long Mounting Machine MAX25 S430 Scoat		
178	Screw - Medium Machine MAX10 S410 for Aluminum		
179	Screw - Short Machine MAX5 S410 for Aluminum		
180	Screw - Truss Head Self Drilling Tapping MAX18 S410		
181	Screw - Inlet and Manifold Gas MAX8		

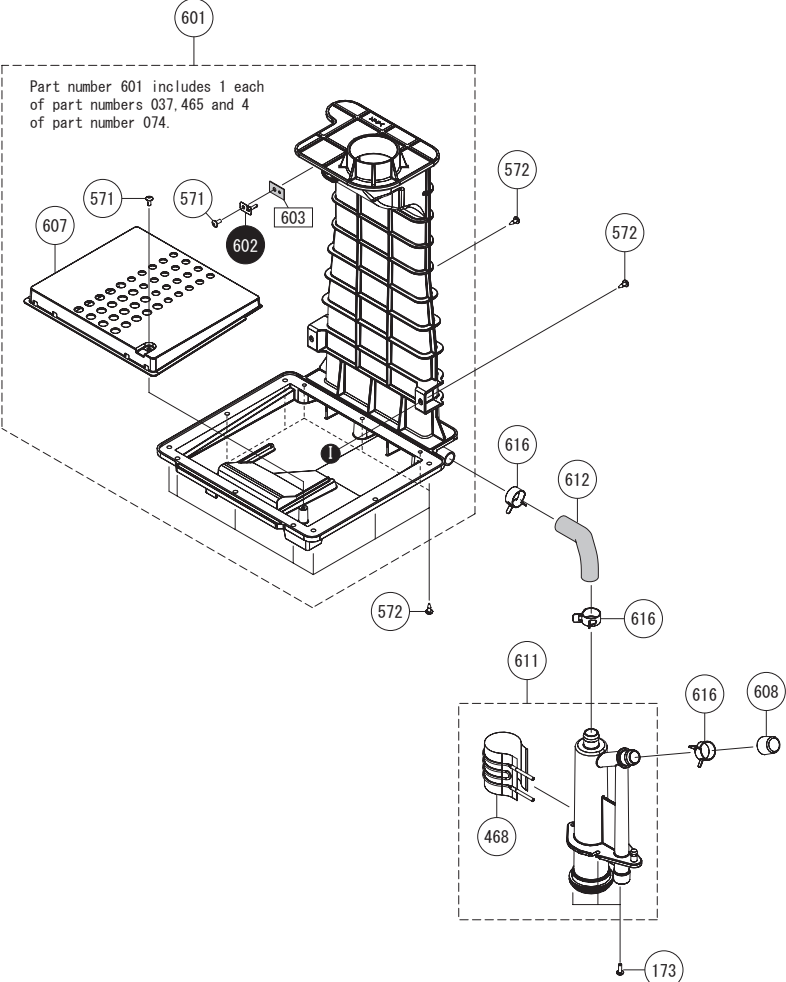
Hot-water feed route 1 NRCR111DV (GQ-C3260WXQ-FF US)  
NRCR92DV (GQ-C2660WXQ-FF US)  
PR199DV (GQ-C3260WXQ-FF PB US)



Hot-water feed route 2 NRCR111DV (GQ-C3260WXQ-FF US)  
NRCR92DV (GQ-C2660WXQ-FF US)  
PR199DV (GQ-C3260WXQ-FF PB US)



Condensate feed route NRCR111DV (GQ-C3260WXQ-FF US)  
NRCR92DV (GQ-C2660WXQ-FF US)  
PR199DV (GQ-C3260WXQ-FF PB US)



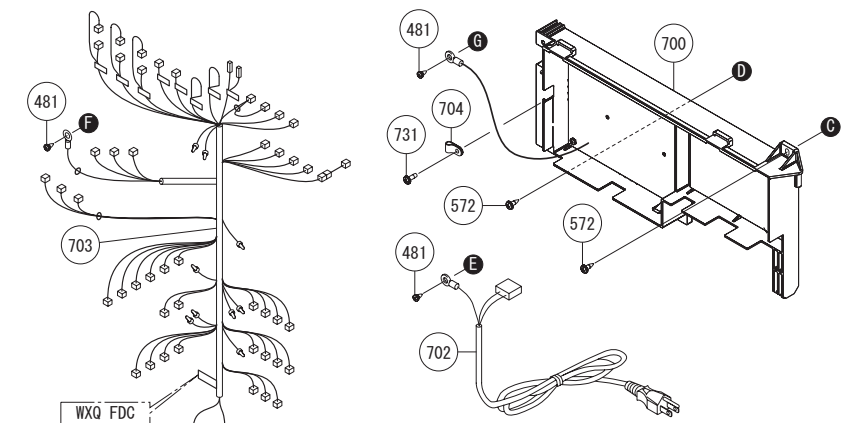
Hot-water feed route and Condensate feed route NRCR111DV (GQ-C3260WXQ-FF US) • NRCR92DV (GQ-C2660WXQ-FF US)  
PR199DV (GQ-C3260WXQ-FF PB US)

Part Nos	Part Names	Order Nos	Q'ty/unit
401	Heat Exchanger Kit (SET)	SKJ72M1	1
402	Mounting Plate - Ignition Plug	FDA0665	1
403	Ignition Plug w/ Gasket	SKJ72MT	1
404	Gasket - Ignition Plug (HEX)	FDA009	1
405	Plug Cover	FAB0109	1
411	Water Flow Sensor (SET)	EDSD101	1
412	Magnetic Sensor	DAND019	1
413	Water Servo - Bypass (SET)	ETFD050	1
414	Water Servo - Main (SET)	FBA0011	1
415	Thermistor Holding Plate	ALSD088	2
416	Thermistor - Red	EZWD002	1
417	Inlet Water Connection (SET)	EHV0001	1
418	Water Filter Cap	DTJ0006	2
419	Water Filter	ESB0032	2
420	Outlet Water Connection	EHU0004	1
421	Mounting Plate - Igniter	FDA0015	1
422	Thermistor - Pink	EZWD003	1
423	Thermistor - Blue	EZWD004	1
424	Water Connector - Elbow	DYTD002	1
425	Wire Cover - Servo	EBTD023	2
426	Water Connector - T-Elbow	FDA0017	1
427	Thermistor - Yellow	EZWD004	1
428	Water Connector - Elbow	FDA0016	2
429	Pipe - Primary SS HEX to T-Elbow	FDB0005	1
430	Pipe - Secondary SS HEX to Primary SS HEX	FDA0023	1
431	Pipe - T-Elbow to Outlet Water Connection	FDC0003	1
432	Drain Plug	CRUD003	5
433	O-Ring - High Temp P3	SAD6633	5
434	Pipe - Inlet Water Connection to Water Flow Sensor	FDC0031	1
435	Freeze Prevention Heater - Rectangle	ERPH002	4
436	Freeze Prevention Heater - Round Short	ERPH003	2
437	Wiring Harness - Bypass Water Servo	ETFJ033	1
438	High Limit Switch - 194	FABH001	1
439	Wiring Harness - Main Water Servo	JBAL024	1
440	High Voltage Igniter Wire L175	ALSJ078	2
441	Igniter (SET)	SKJ72Y9	1
442	Pipe - Inlet to Bypass Servo SET	FDC0013	1
443	Clamp - Rectangle Heater	AJBL002	1
444	Pipe - Secondary SS HEX to Primary SS HEX	FDA0025	1
445	Drain Connection - 1/4" tube	CBND018	2
446	"C" Clamp - Water Pipe 16-25	SAD6593	6
447	O-Ring - High Temp P16	3222302	20
448	"C" Clamp - Water Pipe 16A	6340300	12
449	O-Ring - Thermistor High Temp P4	1323709	5
450	"C" Clamp - Thermistor	CRUD005	3
451	O-Ring - High Temp P6	3234406	3
452	"C" Clamp - 1/4" tube 6-13	SAD6594	3
453	Clamp - Freeze Prevention	AMML001	2
454	Clamp - Freeze Prevention	ELVL011	1
455	Gasket - Exhaust Duct	FDA0003	1
456	Freeze Prevention Heater - Condensate Container	ETRH004	3
457	Pipe SET - Secondary SS HEX to Primary SS HEX	SKJ733C	1
481	Screw - Small Tapping w/o collar MAX8 S410		
482	Screw - Short Machined MAX6 S410		
483	Screw - Black Set MAX8 S430		
484	Screw - Short Tapping MAX8 S410		
485	Screw - Medium Machine MAX10 PS550		
486	Screw - Round Head Medium Tapping MAX10 S410		
487	Screw - Round Head Medium Tapping MAX10 S305		
488	Screw - Long Mounting Machine MAX12 S430		
489	Screw - Truss Head Self Drilling Tapping 4X12 PS550		
490	Screw - Long Tapping 4X16 S410		



[illegible]

Electronic control unit



This procedure is only intended for use by a qualified service professional or authorized Service Representative. Any unauthorized use of this procedure may result in voiding the warranty. Reach out to our customer care for additional support. Contact details are available on the rating plate of the appliance.

\*\* Connect the blue connector marked "FLUSH" for flushing near the Circuit Board when flushing the Heat Exchanger.

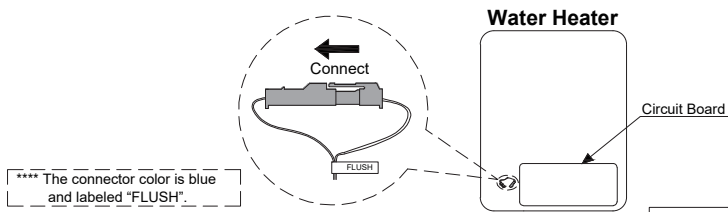
The water heater must remain connected to electrical power when flushing the Heat Exchanger.

### «Procedure 1. The preparation of the flushing system»

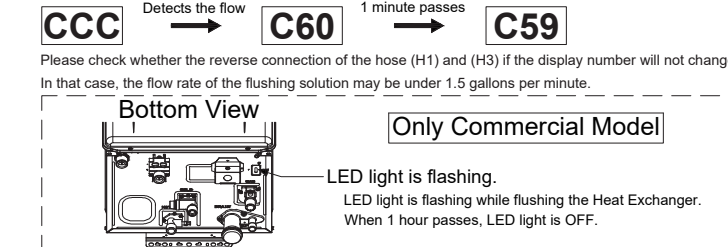
- 
- Service Valve Kit With Pressure Relief Valve\*\* are necessary for flushing the Heat Exchanger.
- Water Outlet
- V2
- V4
- V3
- V1
- Water Inlet
- Water Heater
- Continue to connect
- Gas Supply Valve
- Gas Supply
- Water Inlet
- Water Outlet
- H3
- H2
- Circulating Pump
- Flushing Solution
- Bucket
- H1
- V4
- V3
- V2
- V1
- If a submersible pump is used, then only 2 hoses will be needed (H1 and H3).

### «Procedure 2. Flushing the Heat Exchanger - For Single Unit»

- Water Heater



- When 1 minute passes, the code "C60" will change to "C59" on the Remote Controller.



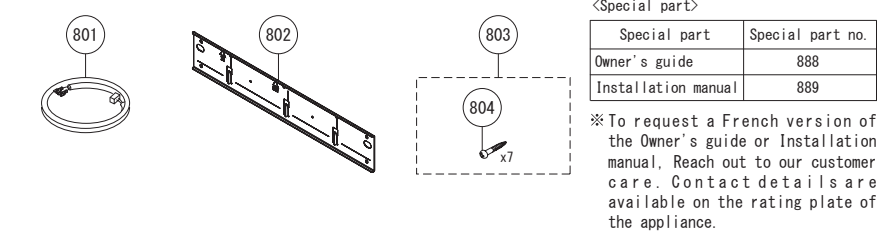
7. Turn off the circulating pump.

1. Remove both drain hoses (H2 and H3) from the bucket. And then place the drain hose (H3) into the sink or outside to drain.

- Water Drain Plugs:** The Water Drain Plugs are used to drain the water heater. To drain the water heater, place a bucket under the water heater and unscrew the Water Drain Plugs. **NOTE:** Residential model has two "water drain Plugs" from the bottom of the water heater. Place a bucket under the water heater to drain water from the "Water Drain Plugs". Carefully unscrew the "Water Drain Plugs" to rinse flushing solution out of the water heater for about 10 seconds, then close the "Water Drain Plugs".

- 

Included Accessories



## Quick-Connect Cord QC-2

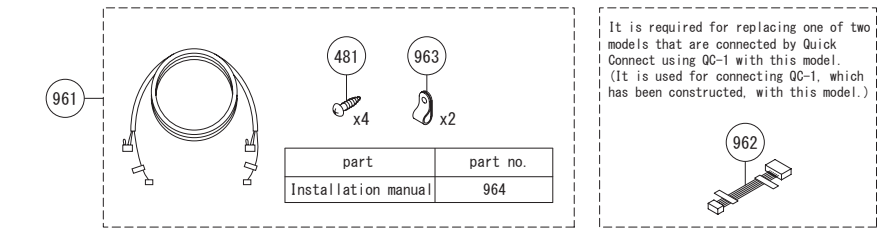
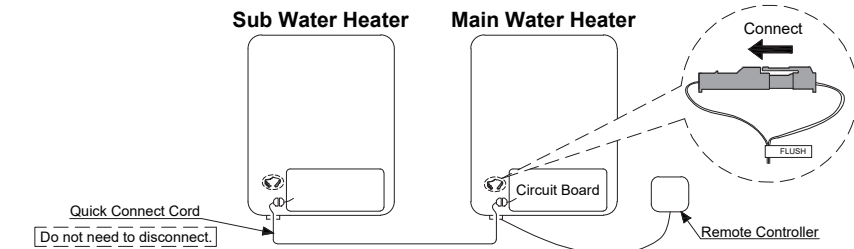


Diagram illustrating the multiplication of 982 by 3 using the distributive property:

$$982 \times 3 = (123 + 452 + 454 + 457 + 987 + 988) \times 3$$

The diagram shows the number 982 in a circle, connected by a line to a dashed box. Inside the dashed box are six circles containing the numbers 123, 452, 454, 457, 987, and 988. Below each circle is a small circle representing a base unit, and to the right of each base unit is a multiplier:  $\times 3$  for 123,  $\times 5$  for 452,  $\times 3$  for 454,  $\times 3$  for 457,  $\times 3$  for 987, and  $\times 3$  for 988.

1. Connect the blue connector marked "FLUSH" for unit needing to be flushed.  
(The water heater is isolated from Quick Connect Multi System when the blue connector marked "FLUSH" for flushing is connected. Not need to disconnect the Quick Connect Cord.)



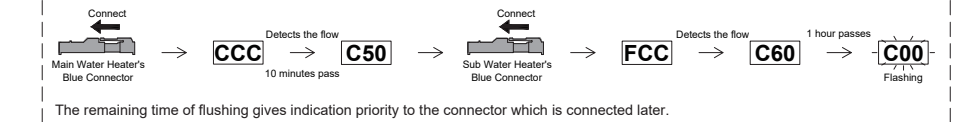
- CCC** is displayed when the Main Water Heater's blue connector is connected.

**FCC** is displayed when the Sub Water Heater's blue connector is connected.

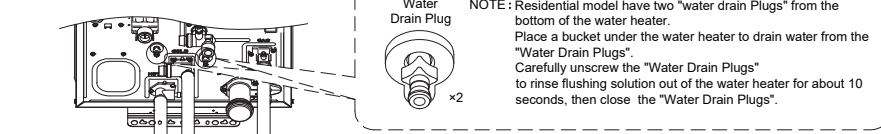
- Do not disconnect the blue connector marked "FLUSH" for flushing



(Ex. : The display when the both water heaters are flushed at the same time.)



- (See the "Procedure 3.1-3.5".)



- Refer to appliance's installation manual or reach out to our customer care, if more information is needed for flushing. Contact details are available on the rating plate of the appliance.