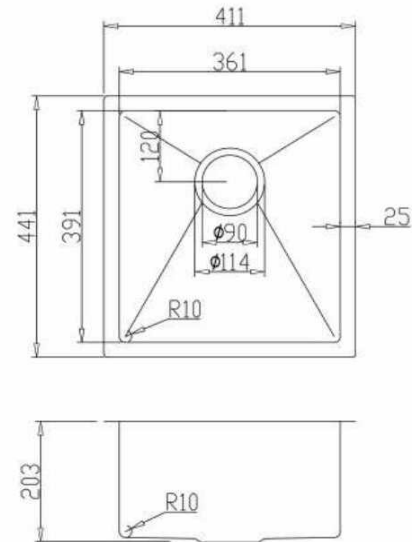


ONEX[®]

STAINLESS STEEL SINKS



MODEL OUS1816-SQR

OVERALL SIZE	441 mm X 411 mm	<ul style="list-style-type: none"> • 304 brushed finish stainless steel 18 gauge • Stainless steel strainer, clips and template included • Sound deadening pads • Drain located towards rear to provide more space under the sink • Product certified ASME A112.19.3, CSA B45.0, and CSA B45.4
BOWL SIZE	391 mm X 361 mm	
DEPTH	203 mm 8"	