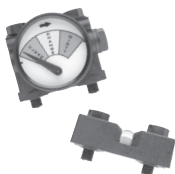




BFS-201



3G Gauges



Mounting Brackets



Wrenches

Item No.	Description	Microns (nominal)	Volume (Cubic Ft)	Weight (lbs)	Case Quantity
Filter Systems					
DRINKING WATER FILTRATION SYSTEMS					
160288	US-1500 Chemical/Lead Reduction System w/Monitor		0.62	6.37	1
160287	US-1000 MTBE Reduction System w/o Monitor - 500 gal		0.62	6.37	1
DRINKING WATER FILTRATION SYSTEM PARTS & ACCESSORIES					
155584-44	P-250 Replacement Cartridge Kit for US-1500		0.16	1.6	2
155832-44	P-250A Replacement Cartridge Kit for US-1000		0.16	1.6	2
150424	SW-5 Spanner Wrench			1.2	6
244439	FT-20LR Faucet			4.5	3
REVERSE OSMOSIS FILTER SYSTEMS					
161014	RO-3000 w/ROM-230T Thin Film Membrane		3.00	22	1
161013	RO-3500 Monitored w/ROM-230TN Thin Film Membrane		3.00	22	1
REVERSE OSMOSIS ELEMENTS & ACCESSORIES					
155854-01	ROM-230T Thin Film Membrane for RO-3000		0.08	1.0	1
155855-19	ROM-230TN Thin Film Membrane for RO-3500		0.08	1.0	1
155923-43	RO Replacement Filter Cartridge Kit for RO-3000/3500		0.14	3.0	1
144653	Auto Shut-Off Valve		0.04	0.5	1
BASIC FILTER SYSTEMS					
160196	BFS-201 Consisting of: two 3/8" Slim Line® blue housings, and unit mounting bracket, completely assembled and packed within shipping carton - cartridges not included		0.69	5.1	1
160166	BBFS-22 Consisting of: two 20" BB® 1" housings on unit mounting bracket - assembled - cartridges not included		2.27	29	1
160168	BBFS-222 with three 1" BB® housings - cartridges not included		3.43	35.3	1
Accessories					
DIFFERENTIAL PRESSURE GAUGES (Fits all 3G MM Caps)					
143550	2 Color Gauge				
143549	3 Color Needle Gauge				
MOUNTING BRACKETS					
244047	Kit for 1/4", 3/8", & 1/2" Slim Line® Housings (Bracket and Screws)				
244046-00	Bracket ONLY for 1/4", 3/8", & 1/2" Slim Line® Housings				
150578	MC-1A Kit for 3/4" Caps w/Bosses (Bracket and Screws)				
244043	Bracket ONLY for 3/4" Caps w/Bosses				
151011	UB-1 Kit for 3/4" Housing (U-Shaped Bracket and Screws)				
144012-00	Bracket ONLY for 3/4" Housing (U-Shaped)				
150061	WB-SS Kit, Stainless Steel for Big Blue® Housing (Bracket and Screws)				
144092	Bracket ONLY (Stainless Steel) for all 10" and 20" Big Blue® Housings				
144142-02	Two-Housing CCF & RO System Bracket				
144169-02	Three-Housing CCF & RO System Bracket				
144258	Two-Housing Big Blue® Bracket				
144259	Three-Housing Big Blue® Bracket				
UNIVERSAL MOUNTING SYSTEM					
160210	BB Housing Skid, Fiberglass Hardware Kit (Assembly Required)				4
NOTE: Mounting system uses up to four Big Blue, Big Clear, or PBH Bag Housings in 10" or 20" lengths. Housings can be installed in series, parallel, or any combination. Piping and housings must be purchased separately.					
SPANNER WRENCHES					
150539	SW-1A for Slim Line® Housings (formerly 150294)				
150295	SW-2 for 3/4" Housings				
150296	SW-3 for Big Blue® Housings (10-inch)				
144368	SW-4 for Big Blue® Housings (20-inch)				
144880	BW/BC Wrench for Big Clear Housings				
CARTRIDGE COUPLERS					
155003	Cartridge Coupler for Standard Cartridges				
144229	Cartridge Coupler for Big Blue® Cartridges				
CARTONS					
140103	#103 Carton (for #5 housings)				
140607	#607 Carton (for #10 Slim Line® housings)				
140086-00	#86 Carton (for #20 housings)				
140606	#606 Carton (for #10 Big Blue® housings)				
140218-00	#218 Carton (for #20 Big Blue® housings)				