

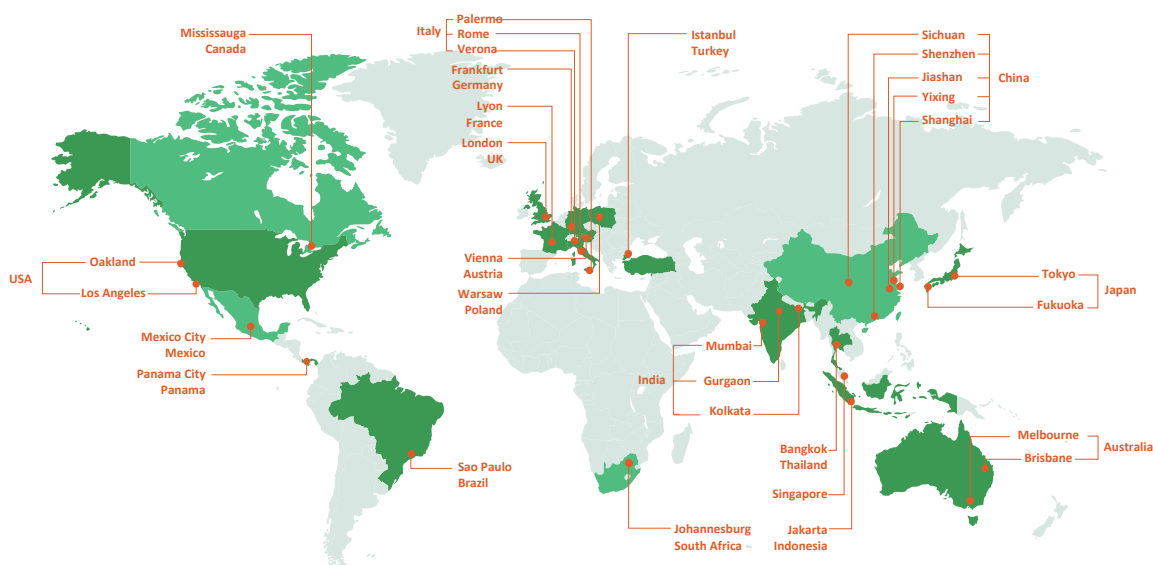


ReneSola

LED PRODUCT CATALOG

VERSION 080117

LAST UPDATED 08/01/2017



ReneSola (NYSE: SOL) is one of the world's largest and most reputable providers of sustainable energy solutions. Since 2005, ReneSola has earned a reputation for superior quality and production efficiency. The company has shipped millions of products to customers around the world, supported by more than 40 office locations in 16 countries. Drawing on its deep heritage in solar technology, ReneSola recently brought its expertise to the LED lighting sector. Through its exceptional manufacturing and sales channels, ReneSola produces and supplies a wide range of LED products to add value and meet ROI objectives for distributors' clients across a number of sectors. Today, ReneSola offers a robust portfolio of LED lighting solutions to meet the unique needs of the industrial, commercial and residential sectors. Through its unyielding focus on innovation and expanded product lines, ReneSola is quickly becoming known as a global leader in the industry. With the support of its valued distribution network, ReneSola's mission is to help reduce lighting costs while enhancing environmental stewardship around the world.



TABLE OF CONTENTS

I. LED FIXTURES	5
LED Dimmable Panel: 1x4, 2x2 & 2x4 - Premium DLC/Standard DLC	6-7
LED Dimmable Panel: 1x4, 2x2 & 2x4	8-9
LED Volumetric Troffer	10
LED Volumetric Troffer - 2nd Generation	11
LED Flood Light	12
LED Linear Highbay	13
LED Linear Highbay - 2nd Generation	14
LED Linear Highbay Series	15
LED Round Highbay	16
LED Tri-Proof Linear Strips	17
LED Canopy Lights - Low Wattage (LW)	18
LED Canopy Lights - High Wattage (HW)	19
LED Wall Packs	20
LED Shoebox Fixture	21
I. LED RETROFIT LAMPS	22
LED High Efficiency (HE) Shoebox Retrofit Kit	23-24
LED Shoebox Retrofit Kit - 100-277V	25
LED Shoebox Retrofit Kit - 200-480V	26
LED Commercial Downlights	27
LED Retrofit Downlights	28-29
LED Retrofit Downlights - CRI90	30
LED Edge-Lit Downlight (New Series)	31
LED Edge-Lit Downlight (Old Series)	32
LED HID Replacement - Dual Function 360°	33-34
LED HID Replacement - High Efficiency (HE) Dual Function 360°	35
LED Corn Lights - Enclosed Fit	36
LED HID Replacement - Dual Function 180°	37-38
LED Corn Light - 2nd Generation	39-41
LED Corn Light - 1st Generation	42-43
I. LED LAMPS	44
LED Tube - Internal Driver High Efficiency	45
LED Tube - Internal Driver	46
LED Tube - Plug & Play	47
LED Tube - Dual Function	48
LED A19 / A21 Bulb	49-50
LED MR16	51
LED BR Series	52-53
LED PAR Series	54-55
LED Candle Light	56
LED G25	57
LED G9 Lamp	58
I. LED FIXTURES	59
LED Surface Mounting Kit	60
LED Unshunted Socket	61
Accessories for Round Highbay	62
I. LED FIXTURES	63-66

LED FIXTURES

					
PANELS - PREM. / STANDARD DLC Dimmable 1X4: 40W 2X2: 40W 2X4: 40W, 50W	PANELS Dimmable 1X4: 40W 2X2: 35W, 40W 2X4: 40W, 50W	VOLUMETRIC TROFFER Dimmable 2X2: 24W 2X4: 42W	VOLUMETRIC TROFFER - 2ND GEN Dimmable 2X2: 42W 2X4: 42W	FLOOD LIGHT Dimmable Large: 150W, 300W Mini: 20W	LINEAR HIGHBAY - 1ST & 2ND GEN Dimmable 1ST GEN: 210W, 280W 2ND GEN: 110W, 210W, 300W
					
ROUND HIGHBAY Dimmable 100W, 135W, 150W, 180W, 200W	WALL PACK Non-Dimmable 60W, 80W, 100W	TRI-PROOF LINEAR STRIP Non-Dimmable 40W	CANOPY LIGHTS Dimmable 45W, 75W, 100W	SHOEBOX FIXTURE Non-Dimmable 120W, 150W, 200W, 320W, 400W	LINEAR HIGHBAY SERIES Dimmable 160W (277V & 480V)

LED RETROFIT LAMPS

					
HE SHOEBOX RETROFIT KIT Non-Dimmable 80W, 100W, 120W, 150W, 200W, 240W, 300W, 400W, 480W	SHOEBOX RETROFIT KIT 100-277V & 200-480V Non-Dimmable 60W, 80W, 100W, 105W, 120W, 150W, 320W, 400W	COMMERCIAL DOWNLIGHTS Dimmable 40W, 54W	RETROFIT DOWNLIGHTS Dimmable 4 Inch: 10W, 11W 6 Inch: 10W, 17W, 19W	RETROFIT DOWNLIGHTS - CRI90 Dimmable 6 Inch: 11W	EDGE-LIT DOWNLIGHT Dimmable 4 Inch: 9W 6 Inch: 12W
					
DUAL FUNCTION CORN LIGHTS Non-Dimmable 16W, 28W, 36W, 45W, 54W, 75W	HE DUAL FUNCTION CORN LIGHTS Non-Dimmable 100W, 120W	CORN LIGHTS - ENCLOSED FIT Non-Dimmable 19W, 36W, 54W	CORN LIGHTS - 180° Non-Dimmable 36W, 54W, 75W	CORN LIGHTS - 2ND GENERATION Non-Dimmable 9W, 12W, 15W, 20W, 30W, 40W, 60W, 80W, 100W, 120W, 150W	CORN LIGHTS - 1ST GENERATION Non-Dimmable 15W, 20W, 30W, 40W, 60W, 80W, 100W

LED LAMPS

					
TUBE - INTERNAL DRIVER Non-Dimmable 2' Frosted: 10W 4' Glass: 12W 4' Frosted: 18W 4' Clear: 18W	TUBE - PLUG & PLAY Non-Dimmable 4' Glass: 15W 4' PC & AL: 18W	TUBE-DUAL FUNCTION Non-Dimmable 4' PC & AL: 18W	A19 / A21 BULB Dimmable 7W, 9W, 9.8W, 15W	MR16 SERIES Dimmable & Non-Dimmable 7W	BR SERIES Dimmable BR20: 7W BR30: 7W, 11W BR40: 17W
					
PAR SERIES Dimmable PAR16: 7W PAR20: 7W PAR30: 12W PAR38: 15W, 17W	CANDLE LIGHT Dimmable 5W	G25 LAMP Dimmable 6W	G9 LAMP Non-Dimmable 3.5W		

ACCESSORIES

					
LED SURFACE MOUNTING KIT For Flat Panels Available In: 1x4, 2x2	UN-SHUNTED TOMBSTONES For T8 Tubes Available In: With or Without Nibs	MINI ALU REFLECTOR For Round Highbay	ALU REFLECTOR For Round Highbay	PC REFRACTOR W/COVER For Round Highbay	WIREGUARD For Round Highbay

Replaces Incandescent/CFL/Fluorescent/HID. Our LED light fixtures are DLC listed with a five-year warranty (50,000 hours) and are free of UV and IR emissions.



**LED DIMMABLE PANELS :
PREMIUM & STANDARD DLC
(NEW MODEL)**



**LED DIMMABLE PANELS :
PREMIUM & STANDARD DLC
(OLD MODEL)**



LED VOLUMETRIC TROFFER



**LED VOLUMETRIC TROFFER:
2ND GEN**



LED FLOOD LIGHT



**LED LINEAR HIGHBAY :
1ST & 2ND GEN**



LED ROUND HIGHBAY



LED WALL PACK



LED TRI-PROOF LINEAR STRIP



LED CANOPY LIGHTS



LED SHOEBOX FIXTURE



LED LINEAR HIGHBAY SERIES

RENESOLA AMERICA INC.

1300 Clay Street, Suite 550, Oakland, CA 94612
us.renesola.com | +1 (415) 852-7421
marketing.us@renesola.com

The Replacement information listed is provided to help inform users of the various assumptions, factors, and methods involved when making lighting replacement decisions, and is for general information purposes only. ReneSola America disclaims all responsibility for any outcomes resulting from the use of this tool. Any reliance you place on this tool is therefore strictly at your own risk. Product information may be changed or updated without notice. Such product information includes the information provided in our data sheets and product disclosures. Accordingly, ReneSola America, as well as its affiliates, agents, and employees (collectively, "Renesola"), disclaims any and all liability for any errors or omissions contained in our information materials.

LED DIMMABLE PANEL PREMIUM DLC/STANDARD DLC 1X4, 2X2, 2X4



The Renesola less than 0.4" thin edge-lit recessed luminaires is offered in three sizes 1X4, 2X2 and 2X4 with the right lumen output needed to illuminate any interior space. The elegance look and feel gives this efficacious fixture the right status when it comes to function. This series disappears in the space when off and just feels like a skylight when on. Its various CCT and lumen packages, three mounting options along with long life makes it the perfect solution to any ambient lighting applications.

FEATURES

- Environmentally friendly; free of mercury, UV and IR emissions.
- Ultra slim; attractive look and feel.
- Ideal heat dissipation design.
- High lumen efficiency and high CRI
- Pre-assembled mounting clips. Can be used with flush mount kit
- Dimmable (0-10V). Instant-on (No delay).
- Standard and Premium DLC rated.
- Suitable for dry locations.

APPLICATIONS

- Hotels
- Restaurants
- Retail

ADDITIONAL INFO

ACCESSORIES

- Surface Mounting Kit available for purchase separately. (See page 60 for details.)

EQUIVALENT TO:

- Fluorescent T8 tubes.
- (See replacement chart for details.)



STOCK STATUS:

- A** - Stocking Item
- B** - Limited Amount Stocking Item
- C** - Discontinued. Availability subject to change
- MTO** - Made To Order

TECHNICAL SPECIFICATION

Part No.	Category	Watt (W)	CCT (K)	Lumens (LM)	Base	Voltage	Size (Inch)	Weight (lb)	DLC	Status	Stock Locations	
											US	CAD
RLPS-1440W4KD0101	1X4 - 100LM/W - Dim Standard DLC	40W	4000K	4000		AC 100-277 50/60HZ	11.85"*47.72"*.40"	4.00	PENDING	A	•	•
RLPS-1440W5KD0101		40W	5000K	4000		AC 100-277 50/60HZ			PENDING	A	•	•
RLPP-1440W4KD0101	1X4 - 125LM/W - Dim Premium DLC	40W	4000K	5000		AC 100-277 50/60HZ	11.85"*47.72"*.40"	4.00	PENDING	MTO-25		
RLPP-1440W5KD0101		40W	5000K	5000		AC 100-277 50/60HZ			PENDING	MTO-25		
RLPS-2240W4KD0101	2X2 - 100 LM/W Dim Standard DLC	40W	4000K	4000		AC 100-277 50/60HZ	23.74"*23.74"*.40"	3.80	PENDING	A	•	•
RLPS-2240W5KD0101		40W	5000K	4000		AC 100-277 50/60HZ			PENDING	A	•	•



LED DIMMABLE PANEL

PREMIUM DLC/STANDARD DLC

1X4, 2X2, 2X4

-CONTINUED-

TECHNICAL SPECIFICATION

Part No.	Category	Watt (W)	CCT (K)	Lumens (LM)	Base	Voltage	Size (Inch)	Weight (lb)	DLC	Status	Stock Locations	
											US	CAD
RLPP-2240W4KD0101	2X2 - 125 LM/W - Dim Premium DLC	40W	4000K	5000		AC 100-277 50/60HZ	23.74"*23.74"*.40"	3.80	PENDING	B	•	•
RLPP-2240W5KD0101		40W	5000K	5000		AC 100-277 50/60HZ			PENDING	B	•	•
RLPS-2440W4KD0101	2X4 - 100 LM/W Dim Standard DLC	40W	4000K	4000		AC 100-277 50/60HZ	23.74*47.72*.40"	6.50	PENDING	MTO-25		
RLPS-2440W5KD0101		40W	5000K	4000		AC 100-277 50/60HZ			PENDING	MTO-25		
RLPP-2440W4KD0101	2X4 - 125 LM/W Dim Premium DLC	40W	4000K	5000		AC 100-277 50/60HZ	23.74*47.72*.40"	6.50	PENDING	B	•	•
RLPP-2440W5KD0101		40W	5000K	5000		AC 100-277 50/60HZ			PENDING	B	•	•
RLPS-2450W4KD0101	2X4 - 100 LM/W - Dim Standard DLC	50W	4000K	5000		AC 100-277 50/60HZ	23.74*47.72*.40"	6.50	PENDING	A	•	•
RLPS-2450W5KD0101		50W	5000K	5000		AC 100-277 50/60HZ			PENDING	A	•	•
RLPP-2450W4KD0101	2X4 - 125 LM/W - Dim Premium DLC	50W	4000K	6250		AC 100-277 50/60HZ	23.74*47.72*.40"	6.50	PENDING	MTO-25		
RLPP-2450W5KD0101		50W	5000K	6250		AC 100-277 50/60HZ			PENDING	MTO-25		

RENESOLA AMERICA INC.

1300 Clay Street, Suite 550, Oakland, CA 94612
 us.renesola.com | +1 (415) 852-7421
 marketing.us@renesola.com

The Replacement information listed is provided to help inform users of the various assumptions, factors, and methods involved when making lighting replacement decisions, and is for general information purposes only. ReneSola America disclaims all responsibility for any outcomes resulting from the use of this tool. Any reliance you place on this tool is therefore strictly at your own risk. Product information may be changed or updated without notice. Such product information includes the information provided in our data sheets and product disclosures. Accordingly, ReneSola America, as well as its affiliates, agents, and employees (collectively, "Renesola"), disclaims any and all liability for any errors or omissions contained in our information materials.

LED DIMMABLE PANEL

1X4, 2X2, 2X4



The Renesola less than 0.4" thin edge-lit recessed luminaires is offered in three sizes 1X4, 2X2 and 2X4 with the right lumen output needed to illuminate any interior space. The elegance look and feel gives this efficacious fixture the right status when it comes to function. The RLP series disappears in the space when off and just feels like a skylight when on. Its various CCT and lumen packages, three mounting options along with long life makes it the perfect solution to any ambient lighting applications.

FEATURES

- Environmentally friendly; free of mercury, UV and IR emissions
- Ultra slim LED panel light
- Energy savings of approximately 70%
- High lumen efficiency and high CRI
- Instant-on (No delay)
- Powder coated white frame
- Dimmable (0-10V)
- Suitable for damp locations.

APPLICATIONS

- Hotels
- Restaurants
- Retail

ADDITIONAL INFO

ACCESSORIES

- Surface Mounting Kit available for purchase separately. (See page 60 for details.)

EQUIVALENT TO:

- Fluorescent T8 tubes.
- (See replacement chart for details.)



STOCK STATUS:

- A** - Stocking Item
- B** - Limited Amount Stocking Item
- C** - Discontinued. Availability subject to change
- MTO** - Made To Order

TECHNICAL SPECIFICATION

Part No.	Category	Watt (W)	CCT (K)	Lumens (LM)	Base	Voltage	Size (Inch)	Weight (lb)	DLC	Status	Stock Locations	
											US	CAD
RLPD040I0404	1x4 - 100LM/W - Dim	40W	4000K	4000		AC100-277V	11.85" * 47.72" * .40"	4.00	✓	C		•
RLPD040I0405		40W	5000K	4000					✓	C		•
RLPD040AN0201	1x4 - 100LM/W - Dim	40W	4000K	4000		AC120-347V	11.85" * 47.72" * .40"	4.00	✓	C		•
RLPD040AN0202		40W	5000K	4000					✓	C		•
RLPD040Q0301	2x2 - 100LM/W - Dim	40W	4000K	4000		AC277-347V	23.74" * 23.74" * 0.40"	3.80	✓	C		•
RLPD040AN0102		40W	5000K	4000					✓	C		•



LED DIMMABLE PANEL

1X4, 2X2, 2X4

-CONTINUED-

TECHNICAL SPECIFICATION

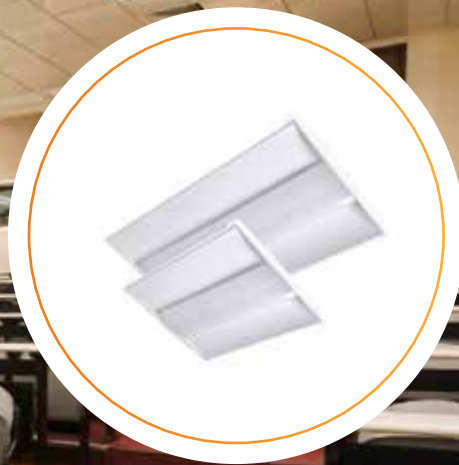
Part No.	Category	Watt (W)	CCT (K)	Lumens (LM)	Base	Voltage	Size (Inch)	Weight (lb)	DLC	Status	Stock Locations	
											US	CAD
RLPD035AK0102	2x2 - 130LM/W	35W	4000K	4550		AC100-277 50/60HZ	23.74"*23.74"*0.40"	7.32	✓	C		•
RLPD040I0304	2x2 - 100LM/W - Dim AC100-277V - 2nd Gen	40W	4000K	4000		AC100-277 50/60HZ	23.74"*23.74"*0.40"	8.16	✓	C	•	•
RLPD040I0305		40W	5000K	4000					✓	C	•	•
RLPD050AN0101	2x4 - 100LM/W - Dim AC120-347V	50W	4000K	5000		AC120-347V	47.72"*23.74"*0.40"	15.52	✓	C		•
RLPD050AN0102		50W	5000K	5000					✓	C		•
RLPD050AK0102	2x4 - 130LM/W - Dim	50W	4000K	6500		AC100-277 50/60HZ	47.72"*23.74"*0.40"	15.52	✓	C		•
RLPD050I0504	2x4 - 100LM/W - Dim AC100-277V - 2nd Gen	50W	4000K	5000		AC100-277 50/60HZ	47.72"*23.74"*0.40"	15.52	✓	C	•	•
RLPD050I0505		50W	5000K	5000					✓	C	•	•

RENESOLA AMERICA INC.

1300 Clay Street, Suite 550, Oakland, CA 94612
 us.renesola.com | +1 (415) 852-7421
 marketing.us@renesola.com

The Replacement information listed is provided to help inform users of the various assumptions, factors, and methods involved when making lighting replacement decisions, and is for general information purposes only. ReneSola America disclaims all responsibility for any outcomes resulting from the use of this tool. Any reliance you place on this tool is therefore strictly at your own risk. Product information may be changed or updated without notice. Such product information includes the information provided in our data sheets and product disclosures. Accordingly, ReneSola America, as well as its affiliates, agents, and employees (collectively, "Renesola"), disclaims any and all liability for any errors or omissions contained in our information materials.

LED VOLUMETRIC TROFFER



The Renesola Troffers understand its position when it comes to volumetric troffers. It offers a smooth and uniform distribution with three lens mechanism for the quickest installation you will need from a Troffer in its class. Simply constructed, economically priced and up to the performance, this troffer is ideal for tight budget jobs without the compromise on performance.

FEATURES

- Environmentally friendly; free of mercury, UV and IR emissions.
- Installs recessed with T-Bar grid.
- Highly reflective powder coat finish; powder coated white frame.
- Diffuser lens provides even and consistent light while eliminating pixelation.
- Dimmable (0-10V).
- Suitable for dry locations.

APPLICATIONS

- Offices
- Commercial
- Retail

ADDITIONAL INFO

EQUIVALENT TO:

- Fluorescent T8 tubes.
- (See replacement chart for details.)



STOCK STATUS:

- A** - Stocking Item
- B** - Limited Amount Stocking Item
- C** - Discontinued. Availability subject to change
- MTO** - Made To Order

TECHNICAL SPECIFICATION

Part No.	Category	Watt (W)	CCT (K)	Lumens (LM)	Base	Voltage	Size (Inch)	Weight (lb)	DLC	Status	Stock Locations	
											US	CAD
RLT-CB-22L/840	2x2 - Troffer Basket	24W	4000K	2291		AC 100-277 50/60HZ	(2x2) 23.74" x 23.74" x 0.39"			C	•	
RLT-CB-24L/850	2x4 - Troffer Basket	42W	5000K	4505		AC 100-277 50/60HZ	(2x4) 47.72" x 23.74" x 0.39"		✓	C	•	

RENESOLA AMERICA INC.

1300 Clay Street, Suite 550, Oakland, CA 94612
 us.renesola.com | +1 (415) 852-7421
 marketing.us@renesola.com

The Replacement information listed is provided to help inform users of the various assumptions, factors, and methods involved when making lighting replacement decisions, and is for general information purposes only. ReneSola America disclaims all responsibility for any outcomes resulting from the use of this tool. Any reliance you place on this tool is therefore strictly at your own risk. Product information may be changed or updated without notice. Such product information includes the information provided in our data sheets and product disclosures. Accordingly, Renesola America, as well as its affiliates, agents, and employees (collectively, "Renesola"), disclaims any and all liability for any errors or omissions contained in our information materials.

LED VOLUMETRIC TROFFER 2ND GENERATION



ReneSola's 2nd Generation Troffer series offer the perfect balance of smooth, consistent lighting in an attractive and energy efficient fixture. This product is ideal for both new construction or retrofitting fluorescent troffers. The 2nd Generation Troffer is UL and DLC listed, with a five-year warranty.

FEATURES

- Environmentally friendly; free of mercury, UV and IR emissions.
- Smooth and consistent lighting distribution.
- Ideal for retrofitting recessed fluorescent troffer fixtures.
- Dimmable (0-10V)
- Suitable for dry locations.

APPLICATIONS

- Offices
- Commercial
- Retail

ADDITIONAL INFO

EQUIVALENT TO:

- 2ft and 4ft Fluorescent Tube.
- (See replacement chart for details.)



STOCK STATUS:

- A** - Stocking Item
- B** - Limited Amount Stocking Item
- C** - Discontinued. Availability subject to change
- MTD** - Made To Order

TECHNICAL SPECIFICATION

Part No.	Category	Watt (W)	CCT (K)	Lumens (LM)	Base	Voltage	Size (Inch)	Weight (lb)	DLC	Status	Stock Locations	
											US	CAD
RLT-CB-22/42W40K	2x2 - 42W 2nd Gen Troffer - Dim	42W	4000K	4536		AC 100-277 50/60HZ	23.82"*3.94"*23.82"	4.4	✓	C	•	
RLT-CB-22/42W50K		42W	5000K	4536					✓	C	•	
RLT-CB-24/42W40K	2x4 - 42W 2nd Gen Troffer - Dim	42W	4000K	4536		AC 100-277 50/60HZ	23.82"*3.94"*47.72"	7.5	✓	C	•	
RLT-CB-24/42W50K		42W	5000K	4536					✓	C	•	
RLT-CB-24/65W40K	2x4 - 65W 2nd Gen Troffer - Dim	65W	4000K	7020		AC 100-277 50/60HZ	23.82"*3.94"*47.72"	7.5	✓	C	•	
RLT-CB-24/65W50K		65W	5000K	7020					✓	C	•	

RENESOLA AMERICA INC.

1300 Clay Street, Suite 550, Oakland, CA 94612
 us.renesola.com | +1 (415) 852-7421
 marketing.us@renesola.com

The Replacement information listed is provided to help inform users of the various assumptions, factors, and methods involved when making lighting replacement decisions, and is for general information purposes only. ReneSola America disclaims all responsibility for any outcomes resulting from the use of this tool. Any reliance you place on this tool is therefore strictly at your own risk. Product information may be changed or updated without notice. Such product information includes the information provided in our data sheets and product disclosures. Accordingly, ReneSola America, as well as its affiliates, agents, and employees (collectively, "Renesola"), disclaims any and all liability for any errors or omissions contained in our information materials.

LED FLOOD LIGHT



ReneSola's Flood Light has a controlled light beam and concentration of light that makes it much brighter than any HID flood light. Along its great functionality, the flood light does not compromise on its form; its sleek and thin appearance gives any job a modern and clean finish.

FEATURES

- Long life span
- Controlled light beam
- Carefully constructed heat sink

APPLICATIONS

- Façade lighting
- Commercial
- Industrial
- Stadiums
- Municipal lighting
- Sports fields

ADDITIONAL INFO

EQUIVALENT TO:

- Large flood light replaces up to 1000W flood



STOCK STATUS:

- A** - Stocking Item
- B** - Limited Amount Stocking Item
- C** - Discontinued. Availability subject to change
- MTO** - Made To Order

TECHNICAL SPECIFICATION

Part No.	Category	Watt (W)	CCT (K)	Lumens (LM)	Base	Voltage	Size (Inch)	Weight (lb)	DLC	Status	Stock Locations	
											US	CAD
RFL300M0101	Mini Flood Light	300W	5700K	33000		AC 100-277	25.39"*14.4"*8.66"	19.4	✓	B		•
RLF1503Y50K21	Large Flood Light	150W	5000K	16500		AC277-480V	17.13"*14.37"*8.66"	19.4	✓	B		•
RFL020V0510		20W	4000K	2000		AC 100-277	7.48"*6.38"*2.20"	19.4	✓	B		•

RENESOLA AMERICA INC.

1300 Clay Street, Suite 550, Oakland, CA 94612
 us.renesola.com | +1 (415) 852-7421
 marketing.us@renesola.com

The Replacement information listed is provided to help inform users of the various assumptions, factors, and methods involved when making lighting replacement decisions, and is for general information purposes only. ReneSola America disclaims all responsibility for any outcomes resulting from the use of this tool. Any reliance you place on this tool is therefore strictly at your own risk. Product information may be changed or updated without notice. Such product information includes the information provided in our data sheets and product disclosures. Accordingly, Renesola America, as well as its affiliates, agents, and employees (collectively, "Renesola"), disclaims any and all liability for any errors or omissions contained in our information materials.

LED LINEAR HIGHBAY

GEN 1



ReneSola's LED Linear High Bay is designed for commercial and industrial applications. The linear design allows for easy sensor integration and a high lumen output. The modules and power supply are replaceable making this fixture an ROI-generator. The LED Linear High Bay is UL and DLC listed and has a five-year warranty.

FEATURES

- Environmentally friendly; free of mercury, UV and IR emissions.
- Linear form allows for easy sensor integration.
- Highly lumen output.
- Modules and power supply are replaceable.
- Powder coated white frame.
- Dimmable (0-10V)
- Suitable for damp locations.

APPLICATIONS

- Warehouses
- Factories
- Retail
- Gymnasiums
- Grocery Stores

ADDITIONAL INFO

EQUIVALENT TO:

- Up to 1500W HID (HPS/Metal Halide)
 - Up to 750W (CFL)
- (See replacement chart for details.)

ACCESSORIES

- Motion and Daylight Harvesting Sensor available for purchase separately.
- (Contact your local ReneSola Rep for details.)



TECHNICAL SPECIFICATION

Part No.	Category	Watt (W)	CCT (K)	Lumens (LM)	Base	Voltage	Size (Inch)	Weight (lb)	DLC	Status	Stock Locations	
											US	CAD
RLHB4-220/50	Linear Highbay - Dim	210W	5000K	22000		AC 100-277 50/60HZ	48"*3"*16.5"			C	•	
RLHB4-300/50	Linear Highbay - Dim	280W	5000K	30000		AC 100-277 50/60HZ	48"*3"*16.5"		✓	C		

STOCK STATUS:

- A** - Stocking Item
- B** - Limited Amount Stocking Item
- C** - Discontinued. Availability subject to change
- MTO** - Made To Order

RENESOLA AMERICA INC.

1300 Clay Street, Suite 550, Oakland, CA 94612
 us.renesola.com | +1 (415) 852-7421
 marketing.us@renesola.com

The Replacement information listed is provided to help inform users of the various assumptions, factors, and methods involved when making lighting replacement decisions, and is for general information purposes only. ReneSola America disclaims all responsibility for any outcomes resulting from the use of this tool. Any reliance you place on this tool is therefore strictly at your own risk. Product information may be changed or updated without notice. Such product information includes the information provided in our data sheets and product disclosures. Accordingly, ReneSola America, as well as its affiliates, agents, and employees (collectively, "Renesola"), disclaims any and all liability for any errors or omissions contained in our information materials.

LED LINEAR HIGHBAY GEN 2



Renesola's Linear H-Bay luminaire comes to the scene ready to replace T5HO as well as HID inefficient sources. With up to 33,000 lumens, this magnificent luminaire can chop off 50% to 60% of your energy bill saving thousands of dollars on maintenance and lost time for lamp replacements. Fully 0-10V dimmable drivers and L70> 75,000h enables this fixture to be a no brainer to replace your old fixtures.

FEATURES

- Environmentally friendly; free of mercury, UV and IR emissions.
- Linear form allows for easy sensor integration.
- Highly lumen output.
- Modules and power supply are replaceable.
- Silver Frame.
- Dimmable (PWM)
- Suitable for damp locations.

APPLICATIONS

- Warehouses
- Factories
- Retail
- Gymnasiums
- Grocery Stores

ADDITIONAL INFO

EQUIVALENT TO:

- Up to 1000W HID (HPS/Metal Halide)
 - Up to 500W CFL.
- (See replacement chart for details.)

ACCESSORIES

- Motion and Daylight Harvesting Sensor available for purchase separately.
- (Contact your local ReneSola Rep for details.)



STOCK STATUS:

- A** - Stocking Item
- B** - Limited Amount Stocking Item
- C** - Discontinued. Availability subject to change
- MTO** - Made To Order

TECHNICAL SPECIFICATION

Part No.	Category	Watt (W)	CCT (K)	Lumens (LM)	Base	Voltage	Size (Inch)	Weight (lb)	DLC	Status	Stock Locations	
											US	CAD
RLT-CB-24/65W40K	Linear Highbay 2nd Gen	110W	5000K	13200		AC 100-277 50/60HZ	45.20"*9.72"*7.09"	22.05	✓	C	•	
RLHB4-210/50K		210W	5000K	26000		AC 100-277 50/60HZ	45.20"*14.69"*7.09"	37.04	✓	C	•	•
RLHB4-300/50K		300W	5000K	33000		AC 100-277 50/60HZ	45.20"*14.69"*7.09"	24.25	✓	C	•	

RENESOLA AMERICA INC.

1300 Clay Street, Suite 550, Oakland, CA 94612
 us.renesola.com | +1 (415) 852-7421
 marketing.us@renesola.com

The Replacement information listed is provided to help inform users of the various assumptions, factors, and methods involved when making lighting replacement decisions, and is for general information purposes only. ReneSola America disclaims all responsibility for any outcomes resulting from the use of this tool. Any reliance you place on this tool is therefore strictly at your own risk. Product information may be changed or updated without notice. Such product information includes the information provided in our data sheets and product disclosures. Accordingly, ReneSola America, as well as its affiliates, agents, and employees (collectively, "Renesola"), disclaims any and all liability for any errors or omissions contained in our information materials.

LED LINEAR HIGHBAY SERIES



Available in both black and white finish, the ReneSola Linear H-Bay is versatile for a wide range of heavy duty applications and features a troffer-like lens for minimal glare to give your. Energy saving, no flicker, and mercury-free.

FEATURES

- Architectural extruded Aluminum structure made for heavy duty application.
- Ideal for retrofitting T5HO or HID H-Bay up to 10 T5HO lamp and 1000W HID High Bays.
- Troffer-like lens for minimal glare eliminating pixelation
- No flicker, mercury free
- Dimmable (1-10V)
- Suitable for damp locations

APPLICATIONS

- High mounting Commercial & Retail
- Warehouse
- Workshop
- Shopping Malls
- Gymnasium
- Recreation Space
- Hall

ADDITIONAL INFO

EQUIVALENT TO:

- 160W replaces 400W-600W HID/ 4-6 lamp T5HO Fluorescent.
- (See replacement chart for details.)

ACCESSORIES

- Pendant Rope • Square Ring Mount

MATERIALS

- AL + Plastic



STOCK STATUS:

- A** - Stocking Item
- B** - Limited Amount Stocking Item
- C** - Discontinued. Availability subject to change
- MTO** - Made To Order

TECHNICAL SPECIFICATION

Part No.	Category	Watt (W)	CCT (K)	Lumens (LM)	Base	Voltage	Size (Inch)	Weight (lb)	DLC	Status	Stock Locations	
											US	CAD
RCRA1602H40KUI	Linear Highbay - Dim	160W	4000K	17600		AC 100-277 50/60HZ	48.19 x 16.77 x 4.47	23.15	✓	MTO-25		
RCRA1602H40K2I	Linear Highbay - Dim	160W	4000K	17600		AC 100-277 50/60HZ	48.19 x 16.77 x 4.47	23.15	✓	MTO-25		
RCRA1602H50KUI	Linear Highbay - Dim	160W	5000K	17600		AC 100-277 50/60HZ	48.19 x 16.77 x 4.47	23.15	✓	MTO-25		
RCRA1602H50K2I	Linear Highbay - Dim	160W	5000K	17600		AC 277-480 50/60HZ	48.19 x 16.77 x 4.47	23.15	✓	MTO-25		

RENESOLA AMERICA INC.

1300 Clay Street, Suite 550, Oakland, CA 94612
 us.renesola.com | +1 (415) 852-7421
 marketing.us@renesola.com

The Replacement information listed is provided to help inform users of the various assumptions, factors, and methods involved when making lighting replacement decisions, and is for general information purposes only. ReneSola America disclaims all responsibility for any outcomes resulting from the use of this tool. Any reliance you place on this tool is therefore strictly at your own risk. Product information may be changed or updated without notice. Such product information includes the information provided in our data sheets and product disclosures. Accordingly, ReneSola America, as well as its affiliates, agents, and employees (collectively, "Renesola"), disclaims any and all liability for any errors or omissions contained in our information materials.

LED ROUND HIGHBAY



The Renesola Round H-Bay series enjoys an unmatched efficacy of 135l/w and covers a wide range of light output at this great efficiency level. The fixture can come with all the right accessory options to manipulate the distribution to the desired application type. With its very long life of 75,000h at L70, this luminaire sticks all the right points for any industrial and commercial application.

FEATURES

- Environmentally friendly; free of mercury, UV and IR emissions.
- Replaces traditional high pressure sodium lamps.
- Ideal design for heat dissipation.
- Easy to install and operate.
- Clear PC lens cover.; 3mm Tempered glass.
- Dimmable (3-in-1 dimming option).
- Internal driver design.
- Suitable for wet locations.

APPLICATIONS

- Parks
- Courtyards
- Retail
- Municipal Lighting

ADDITIONAL INFO

EQUIVALENT TO:

- Up to 400W HID
- (See replacement chart for details.)

ACCESSORIES

- Motion and Daylight Harvesting Sensor available for purchase separately. (Contact your local ReneSola Rep for details.)



STOCK STATUS:

- A** - Stocking Item
- B** - Limited Amount Stocking Item
- C** - Discontinued. Availability subject to change
- MTO** - Made To Order

TECHNICAL SPECIFICATION

Part No.	Category	Watt (W)	CCT (K)	Lumens (LM)	Base	Voltage	Size (Inch)	Weight (lb)	DLC	Status	Stock Locations	
											US	CAD
RHBR07010 50KU-D1112	70W Round Highbay -120°	70W	5000K	8750		AC 120-277V	Ø10.39"×H6.79"		✓	MTO-25		
RERH-100W50KD	100W Round Highbay	100W	5000K	11000		AC 100-277	Ø11.02"×H8.47"		✓	C	•	
RHBR10014H50KU-D1112	100W Round Highbay 120°	100W	5000K	13000		AC 120-277	Ø13.78"×H9.06"		✓	MTO-25		
RHBR10015H50KU-D1112		100W	5000K	13000		AC277-480V	Ø15.08"×H10.12"		✓	MTO-25		
RHBR15014H50KU-D1112	150W Round Highbay 120°	150W	5000K	19500		AC 120-277	Ø13.78"×H9.06"		✓	MTO-25		
RHBR15015H50K-2D0112		150W	5000K	19500		AC277-480V	Ø15.08"×H10.12"		✓	MTO-25		
RHBR20014H50KU-D1112	200W Round Highbay 120°	200W	5000K	26000		AC 120-277	Ø13.78"×H9.49"		✓	MTO-25		
RHBR20015H50K-2D0112		200W	5000K	26000		AC277-480V	Ø15.08"×H10.12"		✓	MTO-25		

RENESOLA AMERICA INC.

1300 Clay Street, Suite 550, Oakland, CA 94612
 us.renesola.com | +1 (415) 852-7421
 marketing.us@renesola.com

The Replacement information listed is provided to help inform users of the various assumptions, factors, and methods involved when making lighting replacement decisions, and is for general information purposes only. ReneSola America disclaims all responsibility for any outcomes resulting from the use of this tool. Any reliance you place on this tool is therefore strictly at your own risk. Product information may be changed or updated without notice. Such product information includes the information provided in our data sheets and product disclosures. Accordingly, Renesola America, as well as its affiliates, agents, and employees (collectively, "Renesola"), disclaims any and all liability for any errors or omissions contained in our information materials.

LED TRI-PROOF LINEAR STRIP



ReneSola's 4-foot 40W LED Strip Light has versatile mounting options (flush, suspended, or wall mount) guaranteed a home for indoor industrial use. Installed in series/tandem adds further versatility in showcasing high CRI 80 light quality.

FEATURES

- Environmentally friendly; free of mercury, UV and IR emissions.
- Durable design; UV resistant with polycarbonate cover.
- Ideal design for effective heat dissipation.
- Suitable for wet locations.

APPLICATIONS

- Manufacturing facilities
- Warehouses
- Industrial
- Municipal lighting

ADDITIONAL INFO

EQUIVALENT TO:

- 4' 32W T8 tube. Up to 150W HID (HPS/Metal Halide). (See replacement chart for details.)

ACCESSORIES

- Motion and daylight harvesting sensor available for purchase separately. Contact your local ReneSola Rep for details.



TECHNICAL SPECIFICATION

Part No.	Category	Watt (W)	CCT (K)	Lumens (LM)	Base	Voltage	Size (Inch)	Weight (lb)	DLC	Status	Stock Locations	
RESL-40W50KSC	Tri-Proof Linear Strip	40W	5000K	3800		AC 100-277V				C	•	

STOCK STATUS:

- A** - Stocking Item
- B** - Limited Amount Stocking Item
- C** - Discontinued. Availability subject to change
- MTO** - Made To Order

RENESOLA AMERICA INC.

1300 Clay Street, Suite 550, Oakland, CA 94612
 us.renesola.com | +1 (415) 852-7421
 marketing.us@renesola.com

The Replacement information listed is provided to help inform users of the various assumptions, factors, and methods involved when making lighting replacement decisions, and is for general information purposes only. ReneSola America disclaims all responsibility for any outcomes resulting from the use of this tool. Any reliance you place on this tool is therefore strictly at your own risk. Product information may be changed or updated without notice. Such product information includes the information provided in our data sheets and product disclosures. Accordingly, ReneSola America, as well as its affiliates, agents, and employees (collectively, "Renesola"), disclaims any and all liability for any errors or omissions contained in our information materials.

LED CANOPY LIGHT LOW WATTAGE (LW)



ReneSola's sleek LED Canopy Light is an easy flush mount installation that fits for the vast majority of overhead outdoor lighting. Its IP65 rating with tempered glass provide further wide-range environmental abilities. Offered in 4000K or 5700K.

FEATURES

- Environmentally friendly; free of mercury, UV and IR emissions.
- Replaces traditional high pressure sodium lamps.
- Ideal design for heat dissipation.
- Impact resistant lens.
- Suitable for wet locations.

APPLICATIONS

- Gas Stations
- Warehouses
- Retail
- Municipal lighting
- Ports
- Parking garages
- Freezer rooms

ADDITIONAL INFO

EQUIVALENT TO:

- Up to 250W HID/Metal Halide
 - Up to 150W CFL Equivalent
- (See replacement chart for details.)

MOUNTING OPTIONS

- Semi Recessed or Flushed



STOCK STATUS:

- A** - Stocking Item
- B** - Limited Amount Stocking Item
- C** - Discontinued. Availability subject to change
- MTO** - Made To Order

TECHNICAL SPECIFICATION

Part No.	Category	Watt (W)	CCT (K)	Lumens (LM)	Base	Voltage	Size (Inch)	Weight (lb)	DLC	Status	Stock Locations	
											US	CAD
RECL-045W40K01	45W Canopy Light Low Wattage	45W	4000K	4950		AC 100-277V	L10.63"*W10.63"*H3.43"	7.72	✓	MTO-25		
RECL-045W50K01		45W	5000K	4950		AC 100-277V	L10.63"*W10.63"*H3.43"	7.72	✓	C	•	•
RECL-045W57K01		45W	5700K	4950		AC 100-277V	L10.63"*W10.63"*H3.43"	7.72	✓	MTO-25		
RECL-075W40K01	75W Canopy Light Low Wattage	75W	4000K	8250		AC 100-277V	L10.63"*W10.63"*H3.43"	7.72	✓	MTO-25		
RECL-075W50K01		75W	5000K	8250		AC 100-277V	L10.63"*W10.63"*H3.43"	7.72	✓	MTO-25		
RECL-075W57K01		75W	5700K	8250		AC 100-277V	L10.63"*W10.63"*H3.43"	7.72	✓	MTO-25		

RENESOLA AMERICA INC.

1300 Clay Street, Suite 550, Oakland, CA 94612
 us.renesola.com | +1 (415) 852-7421
 marketing.us@renesola.com

The Replacement information listed is provided to help inform users of the various assumptions, factors, and methods involved when making lighting replacement decisions, and is for general information purposes only. ReneSola America disclaims all responsibility for any outcomes resulting from the use of this tool. Any reliance you place on this tool is therefore strictly at your own risk. Product information may be changed or updated without notice. Such product information includes the information provided in our data sheets and product disclosures. Accordingly, Renesola America, as well as its affiliates, agents, and employees (collectively, "Renesola"), disclaims any and all liability for any errors or omissions contained in our information materials.



LED CANOPY LIGHT HIGH WATTAGE (HW)

ReneSola's high wattage LED Canopy Light is an easy flush mount installation that fits for the vast majority of overhead outdoor lighting. Its IP65 rating with tempered glass provide further wide-range environmental abilities.

FEATURES

- Environmentally friendly; free of mercury, UV and IR emissions.
- Replaces traditional high pressure sodium lamps.
- Ideal design for heat dissipation.
- Impact resistant lens.
- Suitable for wet locations.

APPLICATIONS

- Gas Stations
- Warehouses
- Retail
- Municipal lighting
- Ports

ADDITIONAL INFO

EQUIVALENT TO:

- 400W HID (HPS/Metal Halide)
 - 280W CFL Equivalent
- (See replacement chart for details.)

MOUNTING OPTIONS

- Semi Recessed or Flushed



STOCK STATUS:

- A** - Stocking Item
- B** - Limited Amount Stocking Item
- C** - Discontinued. Availability subject to change
- MTO** - Made To Order

TECHNICAL SPECIFICATION

Part No.	Category	Watt (W)	CCT (K)	Lumens (LM)	Base	Voltage	Size (Inch)	Weight (lb)	DLC	Status	Stock Locations	
											US	CAD
RECL-100W50K01	100W Canopy - High Watt	100W	5000K	11000		AC 100-277	L14.96" * W14.96" * H3.07"	12.79	✓	A	•	

RENESOLA AMERICA INC.

1300 Clay Street, Suite 550, Oakland, CA 94612
 us.renesola.com | +1 (415) 852-7421
 marketing.us@renesola.com

The Replacement information listed is provided to help inform users of the various assumptions, factors, and methods involved when making lighting replacement decisions, and is for general information purposes only. ReneSola America disclaims all responsibility for any outcomes resulting from the use of this tool. Any reliance you place on this tool is therefore strictly at your own risk. Product information may be changed or updated without notice. Such product information includes the information provided in our data sheets and product disclosures. Accordingly, ReneSola America, as well as its affiliates, agents, and employees (collectively, "Renesola"), disclaims any and all liability for any errors or omissions contained in our information materials.

LED WALL PACK



The ReneSola Wall Pack just makes it easy on one-for-one replacement projects without the need to make any mounting adjustments to your current energy deficient HID wall pack. Same look as its legacy counterpart with all the gains of energy savings and bright performance.

FEATURES

- Environmentally friendly; free of mercury, UV and IR emissions.
- Replaces traditional high pressure sodium lamps.
- Ideal design for heat dissipation.
- Easy to install and operate.
- Black powder finish, aluminum, and glass lens.
- Suitable for wet locations.

APPLICATIONS

- Parks
- Courtyards
- Retail
- Municipal Lighting

ADDITIONAL INFO

EQUIVALENT TO:

- Up to 400W HID (HPS/Metal Halide).
 - Up to 280W CLF
- (See replacement chart for details.)

ACCESSORIES

- Motion and daylight harvesting sensor available for purchase separately.
- (Contact your local ReneSola Rep for details.)



TECHNICAL SPECIFICATION

Part No.	Category	Watt (W)	CCT (K)	Lumens (LM)	Base	Voltage	Size (Inch)	Weight (lb)	DLC	Status	Stock Locations	
											US	CAD
REWP-060W40KH	LED Wall Pack 1/2 Cut Off, 60W	60W	4000K	6600		AC 100-277V	14*9*7.5	4.4	✓	A	•	•
REWP-060W50KH		60W	5000K	6600		AC 100-277V	14*9*7.5	4.4	✓	A	•	•
REWP-060W57KH		60W	5700K	6600		AC 100-277V	14*9*7.5	4.4	✓	MTO-25		
REWP-080W40KH	LED Wall Pack 1/2 Cut Off, 80W	80W	4000K	8800		AC 100-277V	14*9*7.5	4.4	✓	A	•	
REWP-080W50KH		80W	5000K	8800		AC 100-277V	14*9*7.5	4.4	✓	A	•	•
REWP-080W57KH		80W	5700K	8800		AC 100-277V	14*9*7.5	4.4	✓	MTO-25		
REWP-100W40KH	LED Wall Pack 1/2 Cut Off, 100W	100W	4000K	11000		AC 100-277V	18.25*9*9.25	6.3	✓	B	•	
REWP-100W50KH		100W	5000K	11000		AC 100-277V	18.25*9*9.25	6.3	✓	B	•	•
REWP-100W57KH		100W	5700K	11000		AC 100-277V	18.25*9*9.25	6.3	✓	MTO-25		

STOCK STATUS:

- A** - Stocking Item
- B** - Limited Amount Stocking Item
- C** - Discontinued. Availability subject to change
- MTO** - Made To Order

RENESOLA AMERICA INC.

1300 Clay Street, Suite 550, Oakland, CA 94612
 us.renesola.com | +1 (415) 852-7421
 marketing.us@renesola.com

The Replacement information listed is provided to help inform users of the various assumptions, factors, and methods involved when making lighting replacement decisions, and is for general information purposes only. ReneSola America disclaims all responsibility for any outcomes resulting from the use of this tool. Any reliance you place on this tool is therefore strictly at your own risk. Product information may be changed or updated without notice. Such product information includes the information provided in our data sheets and product disclosures. Accordingly, ReneSola America, as well as its affiliates, agents, and employees (collectively, "Renesola"), disclaims any and all liability for any errors or omissions contained in our information materials.

LED SHOEBOX FIXTURE



The Shoebox Light Fixture is designed for outdoor commercial and utility applications. The slip fitter attachment makes installation quick and easy. The light-source is enclosed in the fixture so it is able to withstand the heat. This clean and durable product is UL and DLC listed with a five-year warranty.

FEATURES

- Environmentally friendly; free of mercury, UV and IR emissions.
- MeanWell IP65 driver.
- Instant-on (no delay).
- Long service life; durable.
- Powder coated black frame.
- Suitable for wet locations.

APPLICATIONS

- Outdoor athletic courts
- Athletic fields
- Playground
- Plazas
- Street lamps
- Parking lots

ADDITIONAL INFO

EQUIVALENT TO:

- Up to 1250W HID (HPS/Metal Halide)
 - Up to 1000W CLF
- (See replacement chart for details.)



TECHNICAL SPECIFICATION

Part No.	Category	Watt (W)	CCT (K)	Lumens (LM)	Base	Voltage	Size (Inch)	Weight (lb)	DLC	Status	Stock Locations	
											US	CAD
RSF120B0103	Shoebox Fixture 120W	120W	5000K	11140		AC 100-277 50/60HZ	23.6"×17"×7.1"	28.5		C	•	
RSF150B0103	Shoebox Fixture 150W	150W	5000K	13800		AC 100-277 50/60HZ	23.6"×17"×7.1"	28.5		C	•	
RSF200B0103	Shoebox Fixture 200W	200W	5000K	18400		AC 100-277 50/60HZ	23.6"×17"×7.1"	28.5		C	•	
RSF320B0103	Shoebox Fixture 320W	320W	5000K	27600		AC 100-277 50/60HZ	29.5"×23.61"×10.24"	63		C	•	
RSF400B0103	Shoebox Fixture 400W	400W	5000K	36600		AC 100-277 50/60HZ	30"×27.5"×14"	63		C	•	

STOCK STATUS:

- A** - Stocking Item
B - Limited Amount Stocking Item
C - Discontinued. Availability subject to change
MTO - Made To Order

RENESOLA AMERICA INC.

1300 Clay Street, Suite 550, Oakland, CA 94612
 us.renesola.com | +1 (415) 852-7421
 marketing.us@renesola.com

The Replacement information listed is provided to help inform users of the various assumptions, factors, and methods involved when making lighting replacement decisions, and is for general information purposes only. ReneSola America disclaims all responsibility for any outcomes resulting from the use of this tool. Any reliance you place on this tool is therefore strictly at your own risk. Product information may be changed or updated without notice. Such product information includes the information provided in our data sheets and product disclosures. Accordingly, ReneSola America, as well as its affiliates, agents, and employees (collectively, "Renesola"), disclaims any and all liability for any errors or omissions contained in our information materials.

Replace Incandescent/CFL/Fluorescent. Our LED Retrofit Lamps are UL listed and may be found on the Qualified Product List for both DLC and Energy Star, with a three to five-year warranty (35,000 to 50,000 hours), and are free of UV and IR emissions.



**LED SHOEBOX RETROFIT KIT:
HIGH EFFICIENCY**



**LED SHOEBOX RETROFIT KIT:
100-277V & 200-480V**



**LED COMMERCIAL
DOWNLIGHTS**



LED RETROFIT DOWNLIGHTS



**LED RETROFIT DOWNLIGHTS:
CRI90**



LED EDGE-LIT DOWNLIGHT



**LED CORN LIGHTS:
DUAL FUNCTION**



**LED CORN LIGHTS:
HIGH EFFICIENCY**



**LED CORN LIGHTS:
ENCLOSED FIT**



**LED CORN LIGHTS:
180°**



**LED CORN LIGHTS:
2ND GENERATION**



**LED CORN LIGHTS:
1ST GENERATION**

RENESOLA AMERICA INC.

1300 Clay Street, Suite 550, Oakland, CA 94612
us.renesola.com | +1 (415) 852-7421
marketing.us@renesola.com

The Replacement information listed is provided to help inform users of the various assumptions, factors, and methods involved when making lighting replacement decisions, and is for general information purposes only. ReneSola America disclaims all responsibility for any outcomes resulting from the use of this tool. Any reliance you place on this tool is therefore strictly at your own risk. Product information may be changed or updated without notice. Such product information includes the information provided in our data sheets and product disclosures. Accordingly, ReneSola America, as well as its affiliates, agents, and employees (collectively, "Renesola"), disclaims any and all liability for any errors or omissions contained in our information materials.



LED HIGH EFFICIENCY (HE) SHOEBOX RETROFIT KIT

No parking lot is safe with ReneSola's latest shoebox retrofit assassin! 25% more lumens for the same wattage which speeds up the savings returns. Same install method, same surge protection, and same love from electricians and property managers as our first shoebox retrofit.

FEATURES

- Environmentally friendly; free of mercury, UV and IR emissions.
- Energy saving; long lifespan
- Ideal heat dissipation design.
- Suitable for dry or damp locations.
- Universal bracket.

APPLICATIONS

- Parking lots
- Street lighting
- Highbay fixtures
- Shoebox fixtures
- Wallpack fixtures
- Canopy fixtures
- Other outdoor applications

ADDITIONAL INFO

EQUIVALENT TO:

- Up to 1250W HID (HPS/Metal Halide)
 - Up to 750W CFL
- (See replacement chart for details.)

MATERIALS

- Aluminum + Plastic



STOCK STATUS:

- A** - Stocking Item
- B** - Limited Amount Stocking Item
- C** - Discontinued. Availability subject to change
- MTO** - Made To Order

TECHNICAL SPECIFICATION

Part No.	Category	Watt (W)	CCT (K)	Lumens (LM)	Base	Voltage	Size (Inch)	Weight (lb)	DLC	Status	Stock Locations	
											US	CAD
RSB-080W30K01	HE Shoebox Retrofit 080W	80W	3000K	9600	E39	AC 100-277 60HZ	9.25"-11.22"*6.30"*5.12"-5.91"	4.19	PENDING	MTO-25		
RSB-080W40K01		80W	4000K	9600	E39	AC 100-277 60HZ	9.25"-11.22"*6.30"*5.12"-5.91"	4.19	PENDING	MTO-25		
RSB-080W50K01		80W	5000K	9600	E39	AC 100-277 60HZ	9.25"-11.22"*6.30"*5.12"-5.91"	4.19	PENDING	MTO-25		
RSB-080W57K01		80W	5700K	9600	E39	AC 100-277 60HZ	9.25"-11.22"*6.30"*5.12"-5.91"	4.19	PENDING	MTO-25		
RSB-100W30K01	HE Shoebox Retrofit 100W	100W	3000K	12000	E39	AC 100-277 60HZ	9.25"-11.22"*6.30"*5.12"-5.91"	5.07	PENDING	MTO-25		
RSB-100W40K01		100W	4000K	12000	E39	AC 100-277 60HZ	9.25"-11.22"*6.30"*5.12"-5.91"	5.07	PENDING	MTO-25		
RSB-100W50K01		100W	5000K	12000	E39	AC 100-277 60HZ	9.25"-11.22"*6.30"*5.12"-5.91"	5.07	PENDING	MTO-25		
RSB-100W57K01		100W	5700K	12000	E39	AC 100-277 60HZ	9.25"-11.22"*6.30"*5.12"-5.91"	5.07	PENDING	MTO-25		
RSB-120W30K01	HE Shoebox Retrofit 120W	120W	3000K	14400	E39	AC 100-277 60HZ	9.25"-11.22"*6.30"*5.12"-5.91"	5.18	✓	MTO-25		
RSB-120W40K01		120W	4000K	14400	E39	AC 100-277 60HZ	9.25"-11.22"*6.30"*5.12"-5.91"	5.18	✓	MTO-25		
RSB-120W50K01		120W	5000K	14400	E39	AC 100-277 60HZ	9.25"-11.22"*6.30"*5.12"-5.91"	5.18	✓	MTO-25		
RSB-120W57K01		120W	5700K	14400	E39	AC 100-277 60HZ	9.25"-11.22"*6.30"*5.12"-5.91"	5.18	✓	B	•	

Continue to next page >>

LED HIGH EFFICIENCY (HE) SHOEBOX RETROFIT KIT

-CONTINUED-



TECHNICAL SPECIFICATION

Part No.	Category	Watt (W)	CCT (K)	Lumens (LM)	Base	Voltage	Size (Inch)	Weight (lb)	DLC	Status	Stock Locations US	CAD
RSB-150W30K01	HE Shoebox Retrofit 150W	150W	3000K	18000	E39	AC 100-277 60HZ	12.80"×13.98"×7.17"×5.12"×6.30"	8.16	✓	A	•	
RSB-150W40K01		150W	4000K	18000	E39	AC 100-277 60HZ	12.80"×13.98"×7.17"×5.12"×6.30"	8.16	✓	MTO-5		
RSB-150W50K01		150W	5000K	18000	E39	AC 100-277 60HZ	12.80"×13.98"×7.17"×5.12"×6.30"	8.16	✓	B	•	
RSB-150W57K01		150W	5700K	18000	E39	AC 100-277 60HZ	12.80"×13.98"×7.17"×5.12"×6.30"	8.16	✓	B	•	
RSB-200W30K01	HE Shoebox Retrofit 200W	200W	3000K	24000	E39	AC 100-277 60HZ	12.80"×13.98"×7.17"×5.12"×6.30"	8.38	✓	MTO-5		
RSB-200W40K01		200W	4000K	24000	E39	AC 100-277 60HZ	12.80"×13.98"×7.17"×5.12"×6.30"	8.38	✓	MTO-5		
RSB-200W50K01		200W	5000K	24000	E39	AC 100-277 60HZ	12.80"×13.98"×7.17"×5.12"×6.30"	8.38	✓	B	•	
RSB-200W57K01		200W	5700K	24000	E39	AC 100-277 60HZ	12.80"×13.98"×7.17"×5.12"×6.30"	8.38	✓	A	•	
RSB-240W30K01	HE Shoebox Retrofit 240W	240W	3000K	28800	E39	AC 100-277 60HZ	12.80"×13.98"×7.17"×5.12"×6.30"	8.38	PENDING	MTO-5		
RSB-240W40K01		240W	4000K	28800	E39	AC 100-277 60HZ	12.80"×13.98"×7.17"×5.12"×6.30"	8.38	PENDING	MTO-5		
RSB-240W50K01		240W	5000K	28800	E39	AC 100-277 60HZ	12.80"×13.98"×7.17"×5.12"×6.30"	8.38	PENDING	MTO-5		
RSB-240W57K01		240W	5700K	28800	E39	AC 100-277 60HZ	12.80"×13.98"×7.17"×5.12"×6.30"	8.38	PENDING	MTO-5		
RSB-300W30K01	HE Shoebox Retrofit 300W	300W	3000K	36000	E39	AC 100-277 60HZ	12.80"×13.98"×7.17"×5.12"×6.30"	8.38	PENDING	MTO-5		
RSB-300W40K01		300W	4000K	36000	E39	AC 100-277 60HZ	12.80"×13.98"×7.17"×5.12"×6.30"	8.38	PENDING	MTO-5		
RSB-300W50K01		300W	5000K	36000	E39	AC 100-277 60HZ	12.80"×13.98"×7.17"×5.12"×6.30"	8.38	PENDING	MTO-5		
RSB-300W57K01		300W	5700K	36000	E39	AC 100-277 60HZ	12.80"×13.98"×7.17"×5.12"×6.30"	8.38	PENDING	MTO-5		
RSB-400W30K01	HE Shoebox Retrofit 400W	400W	3000K	48000	E39	AC 100-277 60HZ	14.96"×17.52"×10.24"×5.12"×6.30"	17.64	PENDING	MTO-5		
RSB-400W40K01		400W	4000K	48000	E39	AC 100-277 60HZ	14.96"×17.52"×10.24"×5.12"×6.30"	17.64	PENDING	MTO-5		
RSB-400W50K01		400W	5000K	48000	E39	AC 100-277 60HZ	14.96"×17.52"×10.24"×5.12"×6.30"	17.64	PENDING	MTO-5		
RSB-400W57K01		400W	5700K	48000	E39	AC 100-277 60HZ	14.96"×17.52"×10.24"×5.12"×6.30"	17.64	PENDING	MTO-5		
RSB-480W30K01	HE Shoebox Retrofit 480W	480W	3000K	57600	E39	AC 100-277 60HZ	14.96"×17.52"×10.24"×5.12"×6.30"	17.64	PENDING	MTO-5		
RSB-480W40K01		480W	4000K	57600	E39	AC 100-277 60HZ	14.96"×17.52"×10.24"×5.12"×6.30"	17.64	PENDING	MTO-5		
RSB-480W50K01		480W	5000K	57600	E39	AC 100-277 60HZ	14.96"×17.52"×10.24"×5.12"×6.30"	17.64	PENDING	MTO-5		
RSB-480W57K01		480W	5700K	57600	E39	AC 100-277 60HZ	14.96"×17.52"×10.24"×5.12"×6.30"	17.64	PENDING	B	•	

RENESOLA AMERICA INC.

1300 Clay Street, Suite 550, Oakland, CA 94612
 us.renesola.com | +1 (415) 852-7421
 marketing.us@renesola.com

The Replacement information listed is provided to help inform users of the various assumptions, factors, and methods involved when making lighting replacement decisions, and is for general information purposes only. ReneSola America disclaims all responsibility for any outcomes resulting from the use of this tool. Any reliance you place on this tool is therefore strictly at your own risk. Product information may be changed or updated without notice. Such product information includes the information provided in our data sheets and product disclosures. Accordingly, ReneSola America, as well as its affiliates, agents, and employees (collectively, "Renesola"), disclaims any and all liability for any errors or omissions contained in our information materials.

LED SHOEBOX RETROFIT KIT 100-277V



The ReneSola Retrofit HID kit comes to the rescue when other solutions do not fit the budget or the applications. Certified as a retrofit kit for HID luminaires, it just makes sense to by pass all other quick failing electrical components and sustain a long maintenance free energy saving application time.

FEATURES

- Environmentally friendly; free of mercury, UV and IR emissions.
- Works well in environments with high humidity.
- Enclosed rated.
- Suitable for dry or damp locations.
- Universal bracket.

APPLICATIONS

- Parking lots
- Street lighting
- Highbay fixtures
- Shoebox fixtures
- Wallpack fixtures
- Canopy fixtures
- Other outdoor applications

ADDITIONAL INFO

EQUIVALENT TO:

- Up to 1250W HID (HPS/Metal Halide)
 - Up to 1000W CFL
- (See replacement chart for details.)



STOCK STATUS:

- A** - Stocking Item
- B** - Limited Amount Stocking Item
- C** - Discontinued. Availability subject to change
- MTO** - Made To Order

TECHNICAL SPECIFICATION

Part No.	Category	Watt (W)	CCT (K)	Lumens (LM)	Base	Voltage	Size (Inch)	Weight (lb)	DLC	Status	Stock Locations	
											US	CAD
RSB060C0101	Shoebox Retrofit Kit, 60W	60W	5700K	6000	UMB*	AC 100-277 50/60HZ	9.25"-11.22"*6.14"*5.12"-6.30"	4.5	✓	C	•	•
RSB080C0101	Shoebox Retrofit Kit, 150W	80W	5700K	8500	UMB*	AC 100-277 50/60HZ	9.25"-11.22"*6.14"*5.12"-6.30"	4.5	✓	C	•	•
RSB100C0101	Shoebox Retrofit Kit, 200W	100W	5700K	10500	UMB*	AC 100-277 50/60HZ	9.25"-11.22"*6.14"*5.12"-6.30"	4.5	✓	C	•	•
RSB120C0101	Shoebox Retrofit Kit, 120W	120W	5700K	11400	UMB*	AC 100-277 50/60HZ	9.25"-11.22"*6.14"*5.12"-6.30"	4.5	✓	C	•	•
RSB320D0101	Shoebox Retrofit Kit, 320W	320W	5700K	31500	UMB*	AC 100-277 50/60HZ	15"-17.5"*10.24"*5.12"-6.30"	18	✓	C	•	
RSB400D0101	Shoebox Retrofit Kit, 400W	400W	5700K	42000	UMB*	AC 100-277 50/60HZ	15"-17.5"*10.24"*5.12"-6.30"	18	✓	C	•	

*UMB - Universal Mounting Bracking

RENESOLA AMERICA INC.

1300 Clay Street, Suite 550, Oakland, CA 94612
us.renesola.com | +1 (415) 852-7421
marketing.us@renesola.com

The Replacement information listed is provided to help inform users of the various assumptions, factors, and methods involved when making lighting replacement decisions, and is for general information purposes only. ReneSola America disclaims all responsibility for any outcomes resulting from the use of this tool. Any reliance you place on this tool is therefore strictly at your own risk. Product information may be changed or updated without notice. Such product information includes the information provided in our data sheets and product disclosures. Accordingly, ReneSola America, as well as its affiliates, agents, and employees (collectively, "Renesola"), disclaims any and all liability for any errors or omissions contained in our information materials.

LED SHOEBOX RETROFIT KIT 200-480V



This 277V-480V ReneSola's Shoebox Retrofit Kit features a universal mounting bracket for maximum compatibility with fixtures that use HID/HPS bulbs of up to 1250W. Perfect for parking lots, roadways, parks and as a replacement for street lights, this high voltage Shoebox version shines brightly with high performance and reliability.

FEATURES

- Environmentally friendly; free of mercury, UV and IR emissions.
- Works well in environments with high humidity.
- Enclosed rated.
- Suitable for damp locations.
- Universal bracket.

APPLICATIONS

- Parking Lots
- Street Lighting
- High Bay Fixtures
- Shoebox Fixtures
- Wall Pack Fixtures
- Other outdoor applications

ADDITIONAL INFO

EQUIVALENT TO:

- Up to 1250W HID (HPS/Metal Halide)
 - Up to 750W CFL
- (See replacement chart for details.)



STOCK STATUS:

- A** - Stocking Item
- B** - Limited Amount Stocking Item
- C** - Discontinued. Availability subject to change
- MTO** - Made To Order

TECHNICAL SPECIFICATION

Part No.	Category	Watt (W)	CCT (K)	Lumens (LM)	Base	Voltage	Size (Inch)	Weight (lb)	DLC	Status	Stock Locations	
											US	CAD
RSB105D0201	Shoebox Retrofit Kit, 105W	105W	5700K	10500	UMB*	AC 200-480V 50/60HZ	9.25"-11.22"*6.30"*5.12"-6.30"	5.18	✓	C		•
RSB120D0201	Shoebox Retrofit Kit, 120W	120W	5700K	12000	UMB*	AC 200-480V 50/60HZ	9.25"-11.22"*6.30"*5.12"-6.30"	5.18	✓	B	•	
RSB150D0201	Shoebox Retrofit Kit, 150W	150W	5700K	16000	UMB*	AC 200-480V 50/60HZ	12.80"-14"*7.16"*5.12"-6.30"	8.15	✓	MTO-5		
RSB400D0201	Shoebox Retrofit Kit, 400W	400W	5700K	42000	UMB*	AC 200-480V 50/60HZ	15"-17.5"*10.24"*5.12"-6.30"	18	✓	MTO-5		

*UMB - Universal Mounting Bracketing

RENESOLA AMERICA INC.

1300 Clay Street, Suite 550, Oakland, CA 94612
us.renesola.com | +1 (415) 852-7421
marketing.us@renesola.com

The Replacement information listed is provided to help inform users of the various assumptions, factors, and methods involved when making lighting replacement decisions, and is for general information purposes only. ReneSola America disclaims all responsibility for any outcomes resulting from the use of this tool. Any reliance you place on this tool is therefore strictly at your own risk. Product information may be changed or updated without notice. Such product information includes the information provided in our data sheets and product disclosures. Accordingly, ReneSola America, as well as its affiliates, agents, and employees (collectively, "Renesola"), disclaims any and all liability for any errors or omissions contained in our information materials.

LED COMMERCIAL DOWNLIGHTS



Our Commercial Downlight Retrofit Kit in 8" and 10" provide a quick way to retrofit commercial cans to LED technology in order to lower energy consumption (Energy Star Certified), provide long operating life, while producing high CRI. An aluminum reflector creates a specification grade look and feel without paying the price. Its operating 277V means retrofit is designed from the ground up to work in commercial spaces.

FEATURES

- Environmentally friendly; free of mercury, UV and IR emissions.
- Dimmable (0-10V)
- High efficiency, no light pollution.
- Operating voltage up to 277V.
- Dimmable
- Suitable for damp locations.

APPLICATIONS

- Residential
- Retail
- Schools
- Hospitality
- Hospitals

ADDITIONAL INFO

MATERIALS

- Aluminum



TECHNICAL SPECIFICATION

Part No.	Category	Watt (W)	CCT (K)	Lumens (LM)	Base	Voltage	Size (Inch)	Weight (lb)	Energy Star	Status	Stock Locations	
											US	CAD
REDL084040K	8' Commercial	40W	4000K	3320		AC 100-277 50/60HZ	Ø9.29" * H8.98"	3.40	✓	C	•	
REDL105440K	10' Commercial	50W	4000K	3912		AC 100-277 50/60HZ	Ø10.98" * H10.00"	3.40		C	•	

STOCK STATUS:

- A** - Stocking Item
- B** - Limited Amount Stocking Item
- C** - Discontinued. Availability subject to change
- MTO** - Made To Order

RENESOLA AMERICA INC.

1300 Clay Street, Suite 550, Oakland, CA 94612
 us.renesola.com | +1 (415) 852-7421
 marketing.us@renesola.com

The Replacement information listed is provided to help inform users of the various assumptions, factors, and methods involved when making lighting replacement decisions, and is for general information purposes only. ReneSola America disclaims all responsibility for any outcomes resulting from the use of this tool. Any reliance you place on this tool is therefore strictly at your own risk. Product information may be changed or updated without notice. Such product information includes the information provided in our data sheets and product disclosures. Accordingly, ReneSola America, as well as its affiliates, agents, and employees (collectively, "Renesola"), disclaims any and all liability for any errors or omissions contained in our information materials.

LED RETROFIT DOWNLIGHTS



The ReneSola Retrofit Downlight provide uniformity and comfort in lighting. The LED downlight range was created to replace incandescent and CFL solutions. It's 4" dimension will fit perfectly for a commercial or residential application.

FEATURES

- Environmentally friendly; free of mercury, UV and IR emissions.
- Over 60% energy savings compared to traditional incandescent bulbs
- Dimmable (available on selected dimmers - see compatibility chart)
- Suitable for damp locations.

APPLICATIONS

- Hospitals
- Retail
- Schools
- Hospitality
- Residential

ADDITIONAL INFO

EQUIVALENT TO:

- Up to 100W Incandescent
 - Up to 52W CFL
- (See replacement chart for full details.)

MATERIALS

- Aluminum etched white finish



STOCK STATUS:

- A** - Stocking Item
B - Limited Amount Stocking Item
C - Discontinued. Availability subject to change
MTO - Made To Order

TECHNICAL SPECIFICATION

Part No.	Category	Watt (W)	CCT (K)	Lumens (LM)	Base	Voltage	Size (Inch)	Weight (lb)	Energy Star	Status	Stock Locations	
											US	CAD
REDL41027K	4" Downlight - Dim	10W	2700K	650	E26	AC 120V 60HZ	Ø5.35"*H3.43"	0.55	✓	C	•	
REDL41030K		10W	3000K	650	E26	AC 120V 60HZ	Ø5.35"*H3.43"	0.55	✓	C	•	•
REDL41040K		10W	4000K	650	E26	AC 120V 60HZ	Ø5.35"*H3.43"	0.55	✓	C	•	•
REDL41050K		10W	5000K	650	E26	AC 120V 60HZ	Ø5.35"*H3.43"	0.55	✓	C		•
RETLD-0113080-065A001		11W	3000K	750	E26	AC 120V 60HZ	Ø5.08"*H3.43"	0.55		C	•	

LED RETROFIT DOWNLIGHTS

-CONTINUED-



TECHNICAL SPECIFICATION

Part No.	Category	Watt (W)	CCT (K)	Lumens (LM)	Base	Voltage	Size (Inch)	Weight (lb)	Energy Star	Status	Stock Locations	
											US	CAD
REDL61027K	6" Downlight - Dim	10W	2700K	750	E26	AC 120V 60HZ	Ø7.48**H3.61"	0.72	✓	C	•	•
REDL61030K		10W	3000K	750	E26	AC 120V 60HZ	Ø7.48**H3.61"	0.72	✓	C	•	•
REDL61040K		10W	4000K	750	E26	AC 120V 60HZ	Ø7.48**H3.61"	0.72	✓	C	•	•
REDL61050K		10W	5000K	750	E26	AC 120V 60HZ	Ø7.48**H3.61"	0.72	✓	C		•
REDL61727K		17W	2700K	1200	E26	AC 120V 60HZ	Ø7.48**H3.61"	0.72	✓	C		•
REDL61730K		17W	3000K	1200	E26	AC 120V 60HZ	Ø7.48**H3.61"	0.72	✓	C		•
REDL61727K		17W	5000K	1200	E26	AC 120V 60HZ	Ø7.48**H3.61"	0.72	✓	C		•
RETLD-0193080-065B001		19W	3000K	1200	E26	AC 120V 60HZ	Ø7.48**H3.61"	0.72		C	•	

RENESOLA AMERICA INC.

1300 Clay Street, Suite 550, Oakland, CA 94612
 us.renesola.com | +1 (415) 852-7421
 marketing.us@renesola.com

The Replacement information listed is provided to help inform users of the various assumptions, factors, and methods involved when making lighting replacement decisions, and is for general information purposes only. ReneSola America disclaims all responsibility for any outcomes resulting from the use of this tool. Any reliance you place on this tool is therefore strictly at your own risk. Product information may be changed or updated without notice. Such product information includes the information provided in our data sheets and product disclosures. Accordingly, ReneSola America, as well as its affiliates, agents, and employees (collectively, "Renesola"), disclaims any and all liability for any errors or omissions contained in our information materials.

LED RETROFIT DOWNLIGHTS CRI90



The ReneSola Retrofit Downlight 90CRI version provide a cost efficient solution in the long-run, which will save 60% every compared to traditional incandescent. This version will still provide uniformity and comfort in lighting as the original version.

FEATURES

- Environmentally friendly; free of mercury, UV and IR emissions.
- Over 60% energy savings compared to traditional incandescent bulbs
- Dimmable (available on selected dimmers - see compatibility chart)
- Suitable for damp locations.

APPLICATIONS

- Hospitals
- Retail
- Schools
- Hospitality
- Residential

ADDITIONAL INFO

EQUIVALENT TO:

- Up to 60W HID (HPS/Metal Halide)
 - Up to 36W CFL
- (See replacement chart for full details.)

MATERIALS

- AL + PC / Iron + PC



TECHNICAL SPECIFICATION

Part No.	Category	Watt (W)	CCT (K)	Lumens (LM)	Base	Voltage	Size (Inch)	Weight (lb)	Energy Star	Status	Stock Locations	
											US	CAD
REDL61130K-90	90CRI Down Light Retrofit Kits	11W	3000K	670	E26	AC 120V 60HZ	7.48"*H1.90" (CUT-OUT 5" & 6")		✓	C	•	
REDL61140K-90		11W	4000K	670	E26	AC 120V 60HZ	7.48"*H1.90" (CUT-OUT 5" & 6")		✓	C	•	
REDL61150K-90		11W	5000K	670	E26	AC 120V 60HZ	7.48"*H1.90" (CUT-OUT 5" & 6")		✓	C	•	

STOCK STATUS:

- A** - Stocking Item
- B** - Limited Amount Stocking Item
- C** - Discontinued. Availability subject to change
- MTO** - Made To Order

RENESOLA AMERICA INC.

1300 Clay Street, Suite 550, Oakland, CA 94612
 us.renesola.com | +1 (415) 852-7421
 marketing.us@renesola.com

The Replacement information listed is provided to help inform users of the various assumptions, factors, and methods involved when making lighting replacement decisions, and is for general information purposes only. ReneSola America disclaims all responsibility for any outcomes resulting from the use of this tool. Any reliance you place on this tool is therefore strictly at your own risk. Product information may be changed or updated without notice. Such product information includes the information provided in our data sheets and product disclosures. Accordingly, ReneSola America, as well as its affiliates, agents, and employees (collectively, "Renesola"), disclaims any and all liability for any errors or omissions contained in our information materials.

LED EDGE-LIT DOWNLIGHT (NEW SERIES)



The Edge-Lit Downlight series offer the perfect balance of uniform, consistent lighting and slim design fitting into any 4" and 6" application. The series feature durable airtight aluminum body with etched white polycarbonate diffuser lens for glare-free application.

FEATURES

- 4" 9W (650lm), 6" 12W (800lm)
- Type IC rated, Air-tight
- L70 @ 25,000h life
- Pot Light Housing is NOT Required even for Insulated Ceilings
- Suitable for damp locations

APPLICATIONS

- Hospitals
- Hospitality
- Retail
- Schools
- Commercial

ADDITIONAL INFO

EQUIVALENT TO:

- 9W/12W replaces 60W Halogen
(See replacement chart for full details.)

ACCESSORIES

- Round mounting plate for 4" and 6"

MATERIALS

- Aluminum etched white finish



TECHNICAL SPECIFICATION

Part No.	Category	Watt (W)	CCT (K)	Lumens (LM)	Base	Voltage	Size (Inch)	Weight (lb)	Energy Star	Status	Stock Locations	
RSD009CX0130K	4" Ultra-Thin Downlight - New 9W	9W	3000K	650		AC120V 50/60Hz	4.72"*1.06"; Cut-out 4.09"		✓	A	US	•
RSD009CX0140K		9W	4000K	650		AC120V 50/60Hz	4.72"*1.06"; Cut-out 4.09"		✓	A		•
RSD012CX0130K	4" Ultra-Thin Downlight - New 12W	12W	3000K	800		AC120V 50/60Hz	6.73"*1.06"; Cut-out 6.06"		✓	A		•
RSD012CX0140K		12W	4000K	800		AC120V 50/60Hz	6.73"*1.06"; Cut-out 6.06"		✓	A		•

STOCK STATUS:

- A** - Stocking Item
- B** - Limited Amount Stocking Item
- C** - Discontinued. Availability subject to change
- MTO** - Made To Order

RENESOLA AMERICA INC.

1300 Clay Street, Suite 550, Oakland, CA 94612
us.renesola.com | +1 (415) 852-7421
marketing.us@renesola.com

The Replacement information listed is provided to help inform users of the various assumptions, factors, and methods involved when making lighting replacement decisions, and is for general information purposes only. ReneSola America disclaims all responsibility for any outcomes resulting from the use of this tool. Any reliance you place on this tool is therefore strictly at your own risk. Product information may be changed or updated without notice. Such product information includes the information provided in our data sheets and product disclosures. Accordingly, ReneSola America, as well as its affiliates, agents, and employees (collectively, "Renesola"), disclaims any and all liability for any errors or omissions contained in our information materials.

LED EDGE-LIT DOWNLIGHT (OLD SERIES)



The Edge-Lit Downlight series offer the perfect balance of uniform, consistent lighting and slim design fitting into any 4" and 6" application. The series feature durable airtight aluminum body with etched white polycarbonate diffuser lens for glare-free application.

FEATURES

- Environmentally friendly; free of mercury, UV and IR emissions.
- Works direct to wire.
- Highly reflective powder coat finish; powder coated white frame.
- Diffuser lens provides even and consistent light while eliminating pixelation
- Suitable for dry locations.

APPLICATIONS

- High-rise Towers
- Hospitality
- Retail
- Shopping Malls
- Commercial Office

ADDITIONAL INFO

ACCESSORIES

- Round mounting plate for 4" and 6"

MATERIALS

- Aluminum etched white finish



STOCK STATUS:

- A** - Stocking Item
- B** - Limited Amount Stocking Item
- C** - Discontinued. Availability subject to change
- MTO** - Made To Order

TECHNICAL SPECIFICATION

Part No.	Category	Watt (W)	CCT (K)	Lumens (LM)	Base	Voltage	Size (Inch)	Weight (lb)	Energy Star	Status	Stock Locations US	CAD
RTL009CB0101	4" Ultra-Thin Downlight - Old 9W	9W	3000K	650		AC 120V 60HZ	4" Round; Ø4.25 Cut-out		✓	C		•
RTL009CB0102		9W	4000K	650		AC 120V 60HZ			✓	C		•
RTL012CB0101	4" Ultra-Thin Downlight - Old 12W	12W	3000K	800		AC 120V 60HZ	4" Round; Ø6.22 Cut-out		✓	C		•
RTL012CB0102		12W	4000K	800		AC 120V 60HZ			✓	C		•

RENESOLA AMERICA INC.

1300 Clay Street, Suite 550, Oakland, CA 94612
 us.renesola.com | +1 (415) 852-7421
 marketing.us@renesola.com

The Replacement information listed is provided to help inform users of the various assumptions, factors, and methods involved when making lighting replacement decisions, and is for general information purposes only. ReneSola America disclaims all responsibility for any outcomes resulting from the use of this tool. Any reliance you place on this tool is therefore strictly at your own risk. Product information may be changed or updated without notice. Such product information includes the information provided in our data sheets and product disclosures. Accordingly, Renesola America, as well as its affiliates, agents, and employees (collectively, "Renesola"), disclaims any and all liability for any errors or omissions contained in our information materials.



LED HID REPLACEMENT: DUAL FUNCTION 360°

The ReneSola New Gen High-power LED lamp is the ideal replacement for HID. Corn cob lamps have been designed to illuminate 360° thus taking the brightness of HID sources while consuming 60% less energy. Its lifetime of 50,000 hours reduces costs year after year.

FEATURES

- Environmentally friendly; free of mercury, UV and IR emissions.
- Works with direct wire or a magnetic ballast. (ONLY on ballast compatibility chart.)
- 80% energy savings
- Instant-on (No delay)
- Rated for enclosed fixtures.
- Built in surge protector
- Suitable for damp locations.

APPLICATIONS

- Post Top Lights
- Highbays
- Recessed Lighting
- Shoebox Lights

ADDITIONAL INFO

EQUIVALENT TO

- Up to 250W HID (HPS/Metal Halide)
 - Up to 175W CFL
- (See replacement chart for full details.)



STOCK STATUS:

- A** - Stocking Item
- B** - Limited Amount Stocking Item
- C** - Discontinued. Availability subject to change
- MTO** - Made To Order

TECHNICAL SPECIFICATION

Part No.	Category	Watt (W)	CCT (K)	Lumens (LM)	Base	Voltage	Size (Inch)	Weight (lb)	DLC	Status	Stock Locations	
											US	CAD
RCN016W30K360	HID Replacement Dual Function 16W 360° E26 Base	16W	3000K	1520	E26	AC 100-277 50/60HZ	Ø2.87"×6.77"	.88		MTO-50		
RCN016W40K360		16W	4000K	1600		AC 100-277 50/60HZ				A	•	
RCN016W50K360		16W	5000K	1680		AC 100-277 50/60HZ				A	•	
RCN016W57K360		16W	5700K	1760		AC 100-277 50/60HZ				MTO-50		
RCN028W30K360	HID Replacement Dual Function 28W 360° E26 Base	28W	3000K	2660	E26	AC 100-277 50/60HZ	Ø2.87"×9.37"	1.39		MTO-50		
RCN028W40K360		28W	4000K	2800		AC 100-277 50/60HZ				B	•	
RCN028W50K360		28W	5000K	2840		AC 100-277 50/60HZ				A	•	
RCN028W57K360		28W	5700K	3080		AC 100-277 50/60HZ				MTO-50		
RCN036W30K360	HID Replacement Dual Function 36W 360° E26 Base	36W	3000K	3420	E26	AC 100-277 50/60HZ	Ø3.54"×8.54"	2.31		MTO-50		
RCN036W40K360		36W	4000K	3420		AC 100-277 50/60HZ				A	•	
RCN036W50K360		36W	5000K	3600		AC 100-277 50/60HZ				A	•	
RCN036W57K360		36W	5700K	3600		AC 100-277 50/60HZ				MTO-50		

Continue to next page >>

LED HID REPLACEMENT: DUAL FUNCTION 360°

-CONTINUED-



TECHNICAL SPECIFICATION

Part No.	Category	Watt (W)	CCT (K)	Lumens (LM)	Base	Voltage	Size (Inch)	Weight (lb)	DLC	Status	Stock Locations US	CAD
RCN036W30K360	HID Replacement Dual Function 36W 360° E39 Base	36W	3000K	3420	E39	AC 100-277 50/60HZ	Ø3.54**9.37"	2.31	✓	MT0-50		
RCN036W40K360		36W	4000K	3420		AC 100-277 50/60HZ			✓	B	•	
RCN036W50K360		36W	5000K	3600		AC 100-277 50/60HZ			✓	A	•	
RCN036W57K360		36W	5700K	3600		AC 100-277 50/60HZ			✓	MT0-50		
RCN045W30K360-E26	HID Replacement Dual Function 45W 360° E26 Base	45W	3000K	4275	E26	AC 100-277 50/60HZ	Ø3.54**9.92"	2.31		MT0-50		
RCN045W40K360-E26		45W	4000K	4500		AC 100-277 50/60HZ				MT0-50		
RCN045W50K360-E26		45W	5000K	4275		AC 100-277 50/60HZ				MT0-50		
RCN045W57K360-E26		45W	5700K	4950		AC 100-277 50/60HZ				MT0-50		
RCN045W30K360	HID Replacement Dual Function 45W 360° E39 Base	45W	3000K	4275	E39	AC 100-277 50/60HZ	Ø3.54**10.79"	2.31	✓	MT0-50		
RCN045W40K360		45W	4000K	4500		AC 100-277 50/60HZ			✓	MT0-50		
RCN045W50K360		45W	5000K	4275		AC 100-277 50/60HZ			✓	MT0-50		
RCN045W57K360		45W	5700K	4950		AC 100-277 50/60HZ			✓	MT0-50		
RCN054W30K360-E26	HID Replacement Dual Function 54W 360° E26 Base	54W	3000K	5130	E26	AC 100-277 50/60HZ	Ø3.54**10.94"	2.31		MT0-50		
RCN054W40K360-E26		54W	4000K	5400		AC 100-277 50/60HZ				B	•	
RCN054W50K360-E26		54W	5000K	5670		AC 100-277 50/60HZ				A	•	
RCN054W57K360-E26		54W	5700K	5940		AC 100-277 50/60HZ				MT0-50		
RCN054W30K360	HID Replacement Dual Function 54W 360° E39 Base	54W	3000K	5130	E39	AC 100-277 50/60HZ	Ø3.54**11.81"	2.31	✓	MT0-50		
RCN054W40K360		54W	4000K	5400		AC 100-277 50/60HZ			✓	B	•	
RCN054W50K360		54W	5000K	5670		AC 100-277 50/60HZ			✓	A	•	
RCN054W57K360		54W	5700K	5940		AC 100-277 50/60HZ			✓	MT0-50		
RCN075W30K360	HID Replacement Dual Function 75W 360° E39 Base	75W	3000K	7125	E39	AC 100-277 50/60HZ	Ø3.74**12.91"	3.09	✓	MT0-50		
MTORCN075W40K360		75W	4000K	7500		AC 100-277 50/60HZ			✓	B	•	
RCN075W50K360		75W	5000K	7875		AC 100-277 50/60HZ			✓	A	•	
RCN075W57K360		75W	5700K	8250		AC 100-277 50/60HZ			✓	MT0-50		

RENESOLA AMERICA INC.

1300 Clay Street, Suite 550, Oakland, CA 94612
 us.renesola.com | +1 (415) 852-7421
 marketing.us@renesola.com

The Replacement information listed is provided to help inform users of the various assumptions, factors, and methods involved when making lighting replacement decisions, and is for general information purposes only. ReneSola America disclaims all responsibility for any outcomes resulting from the use of this tool. Any reliance you place on this tool is therefore strictly at your own risk. Product information may be changed or updated without notice. Such product information includes the information provided in our data sheets and product disclosures. Accordingly, ReneSola America, as well as its affiliates, agents, and employees (collectively, "Renesola"), disclaims any and all liability for any errors or omissions contained in our information materials.



LED HID REPLACEMENT: DUAL FUNCTION 360° HIGH EFFICIENCY

The ReneSola New Gen High-power LED lamp is the ideal replacement for HID. Corn cob lamps have been designed to illuminate 360° thus taking the brightness of HID sources while consuming 80% less energy. Its lifetime of 50,000 hours reduces costs year after year.

FEATURES

- Environmentally friendly; mercury-free, UV and IR emissions
- Works with direct wire or a magnetic ballast. (ONLY on ballast compatibility chart.)
- Replaces traditional HPS and HID lamps
- 80% energy savings
- Instant-on (No delay)
- Built in surge protector
- Suitable for damp locations.

APPLICATIONS

- Post Top Lights
- Highbays
- Recessed Lighting
- Shoebox Lights
- Wall Pack

ADDITIONAL INFO

EQUIVALENT TO:

- Up to 175W CFL
- (See replacement chart for full details.)



STOCK STATUS:

- A** - Stocking Item
B - Limited Amount Stocking Item
C - Discontinued. Availability subject to change
MTO - Made To Order

TECHNICAL SPECIFICATION

Part No.	Category	Watt (W)	CCT (K)	Lumens (LM)	Base	Voltage	Size (Inch)	Weight (lb)	DLC	Status	Stock Locations	
											US	CAD
RCN100W30K360HE	HID Replacement HE Dual Function 360° 100W E39 Base	100W	3000K	12500	E39	AC 100-277 60HZ	Ø5.51"×9.65"	3.97	✓	MTO-50		
RCN100W40K360HE		100W	4000K	13000		AC 100-277 60HZ			✓	A	•	
RCN100W50K360HE		100W	5000K	13500		AC 100-277 60HZ			✓	A	•	
RCN100W57K360HE		100W	5700K	13500		AC 100-277 60HZ			✓	MTO-50		
RCN120W30K360HE	HID Replacement HE Dual Function 360° 120W E39 Base	120W	3000K	15000	E39	AC 100-277 60HZ	Ø5.51"×10.63"	4.19	✓	MTO-50		
RCN120W40K360HE		120W	4000K	15600		AC 100-277 60HZ			✓	A	•	
RCN120W50K360HE		120W	5000K	16200		AC 100-277 60HZ			✓	A	•	
RCN120W57K360HE		120W	5700K	16200		AC 100-277 60HZ			✓	MTO-50		

RENESOLA AMERICA INC.

1300 Clay Street, Suite 550, Oakland, CA 94612
 us.renesola.com | +1 (415) 852-7421
 marketing.us@renesola.com

The Replacement information listed is provided to help inform users of the various assumptions, factors, and methods involved when making lighting replacement decisions, and is for general information purposes only. ReneSola America disclaims all responsibility for any outcomes resulting from the use of this tool. Any reliance you place on this tool is therefore strictly at your own risk. Product information may be changed or updated without notice. Such product information includes the information provided in our data sheets and product disclosures. Accordingly, ReneSola America, as well as its affiliates, agents, and employees (collectively, "Renesola"), disclaims any and all liability for any errors or omissions contained in our information materials.

LED CORN LIGHTS: ENCLOSED FIT



The corn lamps have been designed to illuminate 360° around learning the right distribution from its legacy HID source and consuming less than 60% of its consumption. It's 50,000h life just makes it impossible not to keep on saving year after year with no maintenance cost or major lumen depreciation for a long lasting output of light.

FEATURES

- Environmentally friendly; free of mercury, UV and IR emissions.
- Works w/direct wire/magnetic ballast. (See ballast compatibility chart.)
- Replaces traditional HPS and HID lamps
- 80% energy savings
- Instant-on (No delay)
- Rated for fully enclosed fixture.
- Built in surge protector

APPLICATIONS

- Commercial
- Residential
- Hospitality
- Restaurants
- Industrial

ADDITIONAL INFO

EQUIVALENT TO:

- CFL, G24D & G24O, E26, E39 Base, and all traditional HPS, HID Lamps.
- (See replacement chart for full details.)

MATERIALS

- Aluminum + PL



STOCK STATUS:

- A** - Stocking Item
- B** - Limited Amount Stocking Item
- C** - Discontinued. Availability subject to change
- MTO** - Made To Order

TECHNICAL SPECIFICATION

Part No.	Category	Watt (W)	CCT (K)	Lumens (LM)	Base	Voltage	Size (Inch)	Weight (lb)	DLC	Status	Stock Locations	
											US	CAD
RCN019E26340KU	Corn Light Enclosed Fit 360° E26 Base 100V	19W	4000K	2090	E26	AC100-277V 50/60HZ	Ø3.42"*8.98"	1.70		B		•
RCN019E26350KU		19W	5000K	2185	E26					B		•
RCN036E26350KU		36W	5000K	4320	E26					B		•
RCN036E26350K5	Enclosed Fit 360° 120V	36W	5000K	3960	E26	AC120-347V	Ø3.66"*8.58"	2		B		•
RCN054E39340K5	Corn Light - Enclosed Fit 360° E39 Base	54W	4000K	5670	E39	AC120-347V	Ø3.66"*10.30"	2.31	✓	B		•
RCN054E39350K5		54W	5000K	5670	E39				✓	B		•

RENESOLA AMERICA INC.

1300 Clay Street, Suite 550, Oakland, CA 94612
 us.renesola.com | +1 (415) 852-7421
 marketing.us@renesola.com

The Replacement information listed is provided to help inform users of the various assumptions, factors, and methods involved when making lighting replacement decisions, and is for general information purposes only. ReneSola America disclaims all responsibility for any outcomes resulting from the use of this tool. Any reliance you place on this tool is therefore strictly at your own risk. Product information may be changed or updated without notice. Such product information includes the information provided in our data sheets and product disclosures. Accordingly, ReneSola America, as well as its affiliates, agents, and employees (collectively, "Renesola"), disclaims any and all liability for any errors or omissions contained in our information materials.

LED HID REPLACEMENT : DUAL FUNCTION 180°

The ReneSola High-power LED lamp is the ideal replacement for traditional HPS and HID lamps. Corn cob lamps have been designed to illuminate 180° so the illumination is more direct and focused, while consuming 80% less energy. Its lifetime of 50,000 hours reduces costs year after year.

FEATURES

- Environmentally friendly; free of mercury, UV and IR emissions.
- Works w/direct wire/magnetic ballast. (See ballast compatibility chart.)
- Replaces traditional HPS and HID lamps
- 80% energy savings
- Instant-on (No delay)
- Rated for fully enclosed fixture.
- Built in surge protector
- Suitable for damp locations.

APPLICATIONS

- Post Top Lights
- Highbays
- Recessed Lighting
- Shoebox Lights

ADDITIONAL INFO

EQUIVALENT TO:

- 125W HID (HPS/Metal Halide)
 - 70W CFL
- (See replacement chart for full details.)



STOCK STATUS:

- A** - Stocking Item
B - Limited Amount Stocking Item
C - Discontinued. Availability subject to change
MTO - Made To Order

TECHNICAL SPECIFICATION

Part No.	Category	Watt (W)	CCT (K)	Lumens (LM)	Base	Voltage	Size (Inch)	Weight (lb)	DLC	Status	Stock Locations	
											US	CAD
RCN036W30K180	HID Replacement Dual Function 36W 180° E39 Base	36W	3000K	3420	E39	AC 100-277 50/60HZ	Ø3.62"×9.33"	1.76	✓	MTO-50		
RCN036W40K180		36W	4000K	3600	E39	AC 100-277 50/60HZ			✓	B	•	
RCN036W50K180		36W	5000K	3780	E39	AC 100-277 50/60HZ			✓	B	•	
RCN036W57K180		36W	5700K	3960	E39	AC 100-277 50/60HZ			✓	MTO-50		

LED HID REPLACEMENT: DUAL FUNCTION 180°

CONTINUED



TECHNICAL SPECIFICATION

Part No.	Category	Watt (W)	CCT (K)	Lumens (LM)	Base	Voltage	Size (Inch)	Weight (lb)	Energy Star	Status	Stock Locations	
											US	CAD
RCN054W30K180	HID Replacement Dual Function 54W 180° E39 Base	54W	3000K	5130	E39	AC 100-277 50/60HZ	Ø3.62"*11.02"	2.87	✓	MT0-50		
RCN054W40K180		54W	4000K	5400	E39	AC 100-277 50/60HZ			✓	MT0-50		
RCN054W50K180		54W	5000K	5670	E39	AC 100-277 50/60HZ			✓	B	•	
RCN054W57K180		54W	5700K	5940	E39	AC 100-277 50/60HZ			✓	B	•	
RCN075W30K180	HID Replacement Dual Function 75W 180° E39 Base	75W	3000K	7125	E39	AC 100-277 50/60HZ	Ø3.62"*11.81"	2.87	✓	MT0-50		
RCN075W40K180		75W	4000K	7500	E39	AC 100-277 50/60HZ			✓	B	•	
RCN075W50K180		75W	5000K	7875	E39	AC 100-277 50/60HZ			✓	A	•	
RCN075W57K180		75W	5700K	8250	E39	AC 100-277 50/60HZ			✓	MT0-50		

RENESOLA AMERICA INC.

1300 Clay Street, Suite 550, Oakland, CA 94612
 us.renesola.com | +1 (415) 852-7421
 marketing.us@renesola.com

The Replacement information listed is provided to help inform users of the various assumptions, factors, and methods involved when making lighting replacement decisions, and is for general information purposes only. ReneSola America disclaims all responsibility for any outcomes resulting from the use of this tool. Any reliance you place on this tool is therefore strictly at your own risk. Product information may be changed or updated without notice. Such product information includes the information provided in our data sheets and product disclosures. Accordingly, ReneSola America, as well as its affiliates, agents, and employees (collectively, "Renesola"), disclaims any and all liability for any errors or omissions contained in our information materials.

LED CORN LIGHT: 2ND GEN



Renesola's LED Corn Lights are designed for outdoor commercial and residential applications. These dust-proof lamps offer a 360° beam angle with 80° energy savings and are an environmentally option for replacing traditional low-sodium lamps. Renesola Corn Lights are UL listed and come with a three-year warranty.

FEATURES

- Environmentally friendly; free of mercury, UV and IR emissions.
- Replaces traditional HPS and HID lamps
- 80% energy savings
- Instant-on (No delay)
- Rated for fully enclosed fixtures.
- Suitable for damp locations.

APPLICATIONS

- Post Top Lights
- Highbays
- Recessed Lighting
- Shoebox Lights

ADDITIONAL INFO

EQUIVALENT TO:

- Up to 600W HID (HPS/Metal Halide)
 - Up to 300W CFL
- (See replacement chart for full details.)



TECHNICAL SPECIFICATION

Part No.	Category	Watt (W)	CCT (K)	Lumens (LM)	Base	Voltage	Size (Inch)	Weight (lb)	DLC	Status	Stock Locations	
RCN009H0202	Corn Light 9W 360° E26	9W	4000K	830	E26	AC 100-277 50/60HZ	Ø1.77"×5.70"	0.31		C	•	
RCN009H0203		9W	5000K	855						C	•	
RCN009H0204		9W	6000K	855						C	•	
RCN009H0206	Corn Light 9W 360° G24	9W	3000K	830	G24D	AC 100-277 50/60HZ	Ø1.77"×5.43"	0.31		C	•	•
RCN009H0207		9W	4000K	830						C	•	
RCN009H0208		9W	5000K	855						C	•	
RCN009H0209		9W	6000K	855						C	•	

STOCK STATUS:

- A** - Stocking Item
B - Limited Amount Stocking Item
C - Discontinued. Availability subject to change
MTO - Made To Order

LED CORN LIGHT: 2ND GEN

-CONTINUED-



TECHNICAL SPECIFICATION

Part No.	Category	Watt (W)	CCT (K)	Lumens (LM)	Base	Voltage	Size (Inch)	Weight (lb)	DLC	Status	Stock Locations	
											US	CAD
RCN012H0202	Corn Light 12W 360° E26	12W	4000K	1105	E26	AC 100-277V 50/60HZ	Ø1.77"*6.50"	0.35		C	•	
RCN012H0203		12W	5000K	1140		AC 100-277V 50/60HZ				C	•	
RCN012H0204		12W	6000K	1140		AC 100-277V 50/60HZ				C	•	•
RCN012H0206	Corn Light 12W 360° G24	12W	3000K	1105	G24D	AC 100-277V 50/60HZ	Ø1.77"*6.22"	0.35		C	•	
RCN012H0207		12W	4000K	1105		AC 100-277V 50/60HZ				C	•	
RCN012H0208		12W	5000K	1140		AC 100-277V 50/60HZ				C	•	
RCN012H0209		12W	6000K	1140		AC 100-277V 50/60HZ				C		•
RCN015H0206	Corn Light 15W 360° G24	15W	3000K	1380	G24D	AC 100-277V 50/60HZ	Ø2.16"*H6.10"	0.55		C		•
RCN015H0207		15W	4000K	1380		AC 100-277V 50/60HZ				C	•	
RCN015H0201	Corn Light 15W 360° E26	15W	3000K	1380	E26	AC 100-277V 50/60HZ	Ø2.76"*H6.30"	0.66		C	•	
RCN020H0201	Corn Light 20W 360° E26	20W	3000K	1840	E26	AC 100-277V 50/60HZ	Ø2.76"*H7.09"	0.75		C		•
RCN020H0203		20W	5000K	1900		AC 100-277V 50/60HZ				C	•	
RCN030H0201	Corn Light 30W 360° E26	30W	3000K	2760	E26	AC 100-277V 50/60HZ	Ø3.66"*H8.27"	1.10		C		•
RCN030H0203		30W	5000K	2850		AC 100-277V 50/60HZ				C	•	
RCN030H0207	Corn Light 30W 360° E39	30W	4000K	2850	E26	AC 100-277V 50/60HZ	Ø3.66"*H9.05"	1.10		C	•	
RCN030H0209		30W	6000K	2850		AC 100-277V 50/60HZ				C	•	
RCN040H0201	Corn Light 40W 360° E26	40W	3000K	3680	E26	AC 100-277V 50/60HZ	Ø3.66"*H9.45"	1.23		C		•
RCN040H0202		40W	4000K	3680		AC 100-277V 50/60HZ				C		•
RCN040H0203		40W	5000K	3800		AC 100-277V 50/60HZ				C	•	
RCN040H0204		40W	6000K	3800		AC 100-277V 50/60HZ				C	•	
RCN040H0206	Corn Light 40W 360° E39	40W	3000k	3800	E39	AC 100-277V 50/60HZ	Ø3.66"*H10.24"	1.23		C		•
RCN060H0202	Corn Light 60W 360° E26	60W	4000k	5520	E26	AC 100-277V 50/60HZ	Ø3.66"*H10.43"	1.54		C	•	
RCN060H0206	Corn Light 60W 360° E39	60W	3000K	5520	E39	AC 100-277V 50/60HZ	Ø3.66"*H11.22"	1.54		C	•	
RCN060H0207		60W	4000K	5520		AC 100-277V 50/60HZ				C		•
RCN060H0208		60W	5000K	5700		AC 100-277V 50/60HZ				C		•

Continue to next page >>

LED CORN LIGHT: 2ND GEN

-CONTINUED-



TECHNICAL SPECIFICATION

Part No.	Category	Watt (W)	CCT (K)	Lumens (LM)	Base	Voltage	Size (Inch)	Weight (lb)	DLC	Status	Stock Locations US CAD
RCN080H0201	Corn Light 80W 360° E39	80W	3000K	7360	E39	AC 100-277 50/60HZ	Ø4.92"*H10.63"	2.43		C	•
RCN080H0202		80W	4000K	7360	E39					C	•
RCN080H0203		80W	5000K	7600	E39					C	•
RCN100H0201	Corn Light 100W 360° E39	100W	3000K	9200	E39	AC 100-277 50/60HZ	Ø4.92"*H11.42"	2.65		C	•
RCN100H0202		100W	4000K	9200	E39					C	•
RCN100H0203		100W	5000K	9500	E39					C	•
RCN120H0201	Corn Light 120W 360° E39	120W	3000K	11400	E39	AC 100-277 50/60HZ	Ø4.92"*H12.20"	2.87		C	•
RCN120H0202		120W	4000K	11400	E39					C	•
RCN120H0203		120W	5000K	11400	E39					C	•
RCN150H0201	Corn Light 150W 360° E39	150W	3000K	13800	E39	AC 100-277 50/60HZ	Ø4.92"*H13.19"	3.09		C	•
RCN150H0202		150W	4000K	13800	E39					C	•
RCN150H0203		150W	5000K	14250	E39					C	•
RCN150H0204		150W	6000K	14250	E39					C	•

RENESOLA AMERICA INC.

1300 Clay Street, Suite 550, Oakland, CA 94612
 us.renesola.com | +1 (415) 852-7421
 marketing.us@renesola.com

The Replacement information listed is provided to help inform users of the various assumptions, factors, and methods involved when making lighting replacement decisions, and is for general information purposes only. ReneSola America disclaims all responsibility for any outcomes resulting from the use of this tool. Any reliance you place on this tool is therefore strictly at your own risk. Product information may be changed or updated without notice. Such product information includes the information provided in our data sheets and product disclosures. Accordingly, ReneSola America, as well as its affiliates, agents, and employees (collectively, "Renesola"), disclaims any and all liability for any errors or omissions contained in our information materials.

LED CORN LIGHT: 1ST GEN



The ReneSola High-power LED lamp is the ideal replacement for HID. Corn cob lamps have been designed to illuminate 360 ° so taking the brightness of HID sources while consuming 60% less energy. Its lifetime of 50,000 hours reduces costs year after year.

FEATURES

- Environmentally friendly; free of mercury, UV and IR emissions.
- Works w/direct wire/magnetic ballast. (See ballast compatibility chart.)
- Replaces traditional HPS and HID lamps.
- 80% energy savings.
- Instant-on (no delay).
- Suitable for enclosed fixtures.
- Suitable for dry locations.

APPLICATIONS

- Post Top Lights
- Highbays
- Recessed Lighting
- Shoebox Lights

APPLICATIONS

EQUIVALENT TO:

- Up to 400W HID (HPS/Metal Halide)
 - Up to 350W CFL
- (See replacement chart for full details.)



TECHNICAL SPECIFICATION

Part No.	Category	Watt (W)	CCT (K)	Lumens (LM)	Base	Voltage	Size (Inch)	Weight (lb)	DLC	Status	Stock Locations	
											US	CAD
RCN015C0101	Corn Light 15W 360° E26	15W	3000K	1350	E26	AC 100-277V 50/60HZ	Ø2.87"*6.18"	0.26		C	•	
RCN020C0101	Corn Light 20W 360° E26	20W	3000K	1800	E26	AC 100-277V 50/60HZ	Ø2.87"*6.57"	0.33		C	•	
RCN030C0101	Corn Light 30W 360° E26	30W	3000K	2700	E26	AC 100-277V 50/60HZ	Ø3.54"*8.35"	0.88		C	•	
RCN030C0103		30W	4000K	2760	E26					C		•
RCN030C0107		30W	6000K	2850	E26					C	•	
RCN030C0102	Corn Light 30W 360° E39	30W	3000K	2700	E39	AC 100-277V 50/60HZ	Ø3.54"*8.94"	0.88		C	•	
RCN030C0108		30W	6000K	2850	E39					C	•	

STOCK STATUS:

- A** - Stocking Item
B - Limited Amount Stocking Item
C - Discontinued. Availability subject to change
MTO - Made To Order



LED CORN LIGHT: 1ST GEN

-CONTINUED-

TECHNICAL SPECIFICATION

Part No.	Category	Watt (W)	CCT (K)	Lumens (LM)	Base	Voltage	Size (Inch)	Weight (lb)	DLC	Status	Stock Locations	
											US	CAD
RCN040C0101	Corn Light 40W 360° E26	40W	3000K	3600	E26	AC 100-277 50/60HZ	Ø3.54"*9.92"	0.99		C	•	
RCN040C0103		40W	4000K	3680						C	•	
RCN040C0107		40W	6000K	3800						C	•	
RCN040C0102	Corn Light 40W 360° E39	40W	3000K	3600	E39	AC 100-277 50/60HZ	Ø3.54"*10.51"	0.99		C	•	
RCN040C0104		40W	4000K	3680						C	•	•
RCN040C0106		40W	5000K	3800						C	•	•
RCN040C0108		40W	6000K	3800						C	•	
RCN060C0101	Corn Light 60W 360° E26	60W	3000K	5400	E26	AC 100-277 50/60HZ	Ø3.54"*10.71"	0.99		C	•	
RCN060C0103		60W	4000K	5520						C	•	•
RCN060C0107		60W	6000K	5700						C	•	
RCN060C0102	Corn Light 60W 360° E39	60W	3000K	5400	E39	AC 100-277 50/60HZ	Ø3.54"*11.30"	0.99		C	•	
RCN060C0104		60W	4000K	5520						C	•	•
RCN060C0108		60W	6000K	5700						C	•	
RCN080C0101	Corn Light 80W 360° E39	80W	3000K	7200	E39	AC 100-277 50/60HZ	Ø4.41"*11.50"	1.43		C	•	
RCN080C0102		80W	4000K	7360						C	•	•
RCN080C0104		80W	6000K	7600						C	•	
RCN100C0101	Corn Light 100W 360° E39	100W	3000K	9000	E39	AC 100-277 50/60HZ	Ø4.41"*12.28"	1.54		C	•	
RCN100C0102		100W	4000K	9200						C	•	

RENESOLA AMERICA INC.

1300 Clay Street, Suite 550, Oakland, CA 94612
 us.renesola.com | +1 (415) 852-7421
 marketing.us@renesola.com

The Replacement information listed is provided to help inform users of the various assumptions, factors, and methods involved when making lighting replacement decisions, and is for general information purposes only. ReneSola America disclaims all responsibility for any outcomes resulting from the use of this tool. Any reliance you place on this tool is therefore strictly at your own risk. Product information may be changed or updated without notice. Such product information includes the information provided in our data sheets and product disclosures. Accordingly, ReneSola America, as well as its affiliates, agents, and employees (collectively, "Renesola"), disclaims any and all liability for any errors or omissions contained in our information materials.

Replace Incandescent/CFL/Fluorescent. Our LED Retrofit Lamps and T8 tubes are UL listed and may be found on the Qualified Product List for both DLC and Energy Star, with a three to five-year warranty (35,000-50,000 hours), and are free of UV and IR emissions.



**LED TUBE:
INTERNAL DRIVER**



**LED TUBE:
PLUG & PLAY**



**LED TUBE:
DUAL FUNCTION**



LED A19 / A21 BULB



LED MR16 SERIES



LED BR SERIES



LED PAR SERIES



LED CANDLE LIGHT



LED G25 LAMP



LED G9 LAMP

RENESOLA AMERICA INC.

1300 Clay Street, Suite 550, Oakland, CA 94612
us.renesola.com | +1 (415) 852-7421
marketing.us@renesola.com

The Replacement information listed is provided to help inform users of the various assumptions, factors, and methods involved when making lighting replacement decisions, and is for general information purposes only. ReneSola America disclaims all responsibility for any outcomes resulting from the use of this tool. Any reliance you place on this tool is therefore strictly at your own risk. Product information may be changed or updated without notice. Such product information includes the information provided in our data sheets and product disclosures. Accordingly, ReneSola America, as well as its affiliates, agents, and employees (collectively, "Renesola"), disclaims any and all liability for any errors or omissions contained in our information materials.

LED TUBE: INTERNAL DRIVER HIGH EFFICIENCY



The Internal Driver Tube has an internal Driver and is wired to main voltage only. The ballasts are removed from the fixture and the power is wired direct to the non-shunted sockets. Power is connected to only one end of the tube. In return, there is no power wasted in the ballast.

FEATURES

- Has an internal driver and is wired to main voltage only.
- No power loss; less long term maintenance cost.
- Integrated thermal design.
- High efficiency, no light pollution.
- All-glass housing for better aging (no warping effects).
- Over 140 Lumens/Watt for faster ROI on energy retrofits.

APPLICATIONS

- Office buildings
- Supermarkets

ADDITIONAL INFO

EQUIVALENT TO:

- Replaces fluorescent T8 tubes.
(See replacement chart for full details.)

ACCESSORIES

- Pair of unshunted tombstones come with every Internal T8 piece purchased. (While supplies last, must be noted on purchase order.) See page 61 for details.



TECHNICAL SPECIFICATION

Part No.	Category	Watt (W)	CCT (K)	Lumens (LM)	Base	Voltage	Size (Inch)	Weight (lb)	DLC	Status	Stock Locations	
RDWT8G-12W/40K	4' - Internal Driver Glass	12W	4000K	1700	G13/2'	AC 100-277 50/60HZ	Ø0.09" * L4'	0.68	✓	C	•	
RDWT8G-12W/50K		12W	5000K	1700					✓	C	•	

STOCK STATUS:

- A** - Stocking Item
- B** - Limited Amount Stocking Item
- C** - Discontinued. Availability subject to change
- MTO** - Made To Order

RENESOLA AMERICA INC.

1300 Clay Street, Suite 550, Oakland, CA 94612
us.renesola.com | +1 (415) 852-7421
marketing.us@renesola.com

The Replacement information listed is provided to help inform users of the various assumptions, factors, and methods involved when making lighting replacement decisions, and is for general information purposes only. ReneSola America disclaims all responsibility for any outcomes resulting from the use of this tool. Any reliance you place on this tool is therefore strictly at your own risk. Product information may be changed or updated without notice. Such product information includes the information provided in our data sheets and product disclosures. Accordingly, ReneSola America, as well as its affiliates, agents, and employees (collectively, "Renesola"), disclaims any and all liability for any errors or omissions contained in our information materials.

LED TUBE: INTERNAL DRIVER



The Internal Driver Tube has an internal Driver and is wired to main voltage only. The ballasts are removed from the fixture and the power is wired direct to the non-shunted sockets. Power is connected to only one end of the tube. In return, there is no power is wasted in the ballast.

FEATURES

- Environmentally friendly; mercury free.
- Has an internal driver and is wired to main voltage only.
- No power loss; less long term maintenance cost.
- Integrated thermal design.
- Tube is 1/3 aluminum to prevent product damage or impairment.
- Energy savings up to 45% versus traditional T8 Fluorescent products.
- Consistent light output.
- Suitable for dry locations.

APPLICATIONS

- Factories
- Workshops
- Warehouses
- Commercial

ADDITIONAL INFO

EQUIVALENT TO:

- Replaces fluorescent T8 tubes.
- (See replacement chart for full details.)

ACCESSORIES

- Pair of unshunted tombstones come with every Internal T8 piece purchased. (While supplies last, must be noted on purchase order.) See page 61 for details.



TECHNICAL SPECIFICATION

Part No.	Category	Watt (W)	CCT (K)	Lumens (LM)	Base	Voltage	Size (Inch)	Weight (lb)	DLC	Status	Stock Locations	
											US	CAD
RT801000101	2' - Internal Driver Frosted PC & AL	10W	3000K	1000	G13/2'	AC 100-277 50/60HZ	Ø1.02"×L47.24"	.68		C	•	
RT801000102		10W	4000K	1000						C	•	
RT801000104		10W	5000K	1000						C	•	
RT801800101	4' - Internal Driver Frosted PC & AL	18W	3000K	1800	G13/2'	AC 100-277 50/60HZ	Ø1.02"×L47.24"	.68		C	•	
RT801800102		18W	4000K	1800						C	•	
RT801800104		18W	5000K	1800						C	•	
RT801800109	4' - Internal Driver Clear Lens PC & AL	18W	3000K	1800	G13/2'	AC 100-277 50/60HZ	Ø1.02"×L47.24"	.68		C	•	
RT801800110		18W	4000K	1800						C	•	
RT801800111		18W	5000K	1800						C	•	

STOCK STATUS:

- A** - Stocking Item
- B** - Limited Amount Stocking Item
- C** - Discontinued. Availability subject to change
- MTO** - Made To Order

RENESOLA AMERICA INC.

1300 Clay Street, Suite 550, Oakland, CA 94612
 us.renesola.com | +1 (415) 852-7421
 marketing.us@renesola.com

The Replacement information listed is provided to help inform users of the various assumptions, factors, and methods involved when making lighting replacement decisions, and is for general information purposes only. ReneSola America disclaims all responsibility for any outcomes resulting from the use of this tool. Any reliance you place on this tool is therefore strictly at your own risk. Product information may be changed or updated without notice. Such product information includes the information provided in our data sheets and product disclosures. Accordingly, ReneSola America, as well as its affiliates, agents, and employees (collectively, "ReneSola"), disclaims any and all liability for any errors or omissions contained in our information materials.

LED TUBE: PLUG & PLAY



This Plug and Play version have an internal driver that makes it possible for the lights to use their existing magnetic ballasts then plug directly into the most common linear fluorescent setups, such as T12, T8, and T5. It provide an easy installation; just switch out the fluorescent tubes for LEDs, and you're done. No other modifications are required.

FEATURES

- Has an integrated driver that operates on FL existing magnetic ballast (only).
- Super-easy installation; switch out old fluorescent tubes and no other modifications are required.

APPLICATIONS

- Office buildings
- Supermarkets
- Retail spaces

ADDITIONAL INFO

EQUIVALENT TO:

- 9W/12W replaces 60W Halogen.
- (See replacement chart for full details.)



Applies to 18W



Applies to 15W



STOCK STATUS:

- A** - Stocking Item
B - Limited Amount Stocking Item
C - Discontinued. Availability subject to change
MTO - Made To Order

TECHNICAL SPECIFICATION

Part No.	Category	Watt (W)	CCT (K)	Lumens (LM)	Base	Voltage	Size (Inch)	Weight (lb)	DLC	Status	Stock Locations	
											US	CAD
RT8012AU0102	4' - Plug & Play Glass	15W	4000K	1650	G13/2'	AC100-277 50/60HZ			✓	A		•
RT8012AU0103		15W	5000K	1650					✓	A		•
RT8018X0405	4' - Plug & Play PC & AL	18W	3500K	2100	G13/2'	AC100-277 50/60HZ			✓	C		•
RT8018X0403		18W	4000K	2100					✓	C	•	•
RT8018X0401		18W	5000K	2100					✓	C	•	•

RENESOLA AMERICA INC.

1300 Clay Street, Suite 550, Oakland, CA 94612
 us.renesola.com | +1 (415) 852-7421
 marketing.us@renesola.com

The Replacement information listed is provided to help inform users of the various assumptions, factors, and methods involved when making lighting replacement decisions, and is for general information purposes only. ReneSola America disclaims all responsibility for any outcomes resulting from the use of this tool. Any reliance you place on this tool is therefore strictly at your own risk. Product information may be changed or updated without notice. Such product information includes the information provided in our data sheets and product disclosures. Accordingly, ReneSola America, as well as its affiliates, agents, and employees (collectively, "ReneSola"), disclaims any and all liability for any errors or omissions contained in our information materials.

LED TUBE: DUAL FUNCTION



ReneSola's LED Dual Function T8 Tube is operational with both electronic ballast and line voltage enabling convenient installation and retrofits. At 2100 Lumens with high CRI, our tube is built for providing added value to fluorescent T8 replacements. UL listed and classified for install safety.

FEATURES

- Compatible with most common electronic ballast (see compatibility list) or install using direct-wire method.
- Highly efficient aluminum sink with durable PC lens.
- Suitable for damp locations.

APPLICATIONS

- Office buildings
- Supermarkets
- Retail spaces

ADDITIONAL INFO

EQUIVALENT TO:

- 9W/12W replaces 60W Halogen
(See replacement chart for full details.)



STOCK STATUS:

- A** - Stocking Item
- B** - Limited Amount Stocking Item
- C** - Discontinued. Availability subject to change
- MTO** - Made To Order

TECHNICAL SPECIFICATION

Part No.	Category	Watt (W)	CCT (K)	Lumens (LM)	Base	Voltage	Size (Inch)	Weight (lb)	DLC	Status	Stock Locations	
RDFT8F-18W/40K	4' - LED Tube PC & AL	18W	5000K	2100	G13/2'	AC100-277 50/60HZ	0.09'*L4'	0.68	✓	A	•	
RDFT8F-18W/50K		18W	5000K	2100					✓	A	•	

RENESOLA AMERICA INC.

1300 Clay Street, Suite 550, Oakland, CA 94612
 us.renesola.com | +1 (415) 852-7421
 marketing.us@renesola.com

The Replacement information listed is provided to help inform users of the various assumptions, factors, and methods involved when making lighting replacement decisions, and is for general information purposes only. ReneSola America disclaims all responsibility for any outcomes resulting from the use of this tool. Any reliance you place on this tool is therefore strictly at your own risk. Product information may be changed or updated without notice. Such product information includes the information provided in our data sheets and product disclosures. Accordingly, ReneSola America, as well as its affiliates, agents, and employees (collectively, "ReneSola"), disclaims any and all liability for any errors or omissions contained in our information materials.

LED A19 / A21 BULB



The Renesola A-line speaks simple and elegant design. Both A19 and A29 are essential for replacing incandescent lamps, compact fluorescent lamps and halogen light source. Its light output achieves from 40W up to a 100W incandescent equivalent. With its start and its powerful CRI, this lamp immediately creates the right atmosphere.

FEATURES

- Environmentally friendly; free of mercury.
- High quality heat dissipation.
- The body material is plastic with aluminum housing.
- Energy savings ROI in up to 18 months eliminating pixelation.
- Dimmable (Available on selected dimmers - see compatibility chart).
- Suitable for damp locations (Only 9W).

APPLICATIONS

- Hotels
- Restaurants
- Retail
- Residential

ADDITIONAL INFO

EQUIVALENT TO:

- Incandescent lamps, compact fluorescent lamps and halogen light source
- (See replacement chart for full details.)



STOCK STATUS:

- A** - Stocking Item
B - Limited Amount Stocking Item
C - Discontinued. Availability subject to change
MTD - Made To Order

TECHNICAL SPECIFICATION

Part No.	Category	Watt (W)	CCT (K)	Lumens (LM)	Base	Voltage	Size (Inch)	Weight (lb)	Energy Star	Status	Stock Locations	
											US	CAD
RA60D007X0109	A19 Bulb - 7W Dimmable	7W	2700K	450	E26	AC120V 60HZ	Ø2.36" * H4.29"	0.15		C	•	•
RA60D007X0110		7W	3000K	450						C	•	•
RA60D007X0111		7W	4000K	450						B	•	•
RA60D007X0112		7W	5000K	450						C	•	•
RA60D010X0109	A19 Bulb - 9.8W Dimmable	9.8W	2700K	800	E26	AC120V 60HZ	Ø2.36" * H4.29"	0.15		C	•	•
RA60D010X0110		9.8W	3000K	800						B	•	•
RA60D010X0111		9.8W	4000K	800						B	•	•
RA60D010X0112		9.8W	5000K	800						B	•	•

LED A19 / A21 BULB

-CONTINUED-



TECHNICAL SPECIFICATION

Part No.	Category	Watt (W)	CCT (K)	Lumens (LM)	Base	Voltage	Size (Inch)	Weight (lb)	Energy Star	Status	Stock Locations	
											US	CAD
RA19D009AR0101	A19 Bulb - 9W Dimmable	9W	2700K	800	E26	AC120V 60Hz	2.36" * 4.29"	0.15	✓	MTO		
RA19D009AR0102		9W	3000K	800					✓	A		•
RA19D009AR0103		9W	4000K	800					✓	B		•
RA19D009AR0104		9W	5000K	800					✓	A		•
RA19D009ER0102	A19 Bulb - 9W Dimmable 3 Years Warranty	9W	3000K	800		AC120V 60Hz	2.0" * 4.40"	0.15	✓	A		•
RA19D009ER0103		9W	4000K	800					✓	B		•
RA19D009AR0104		9W	5000K	800					✓	A		•
RA21D015S0101	A21 Bulb - 15W Dimmable	15W	2700K	1600		AC120V 60Hz	2.83" * 5.24"	0.44		C		•
RA21D015S0102		15W	3000K	1600						B		•
RA21D015S0103		15W	4000K	1600						C		•
RA21D015S0104		15W	5000K	1600						B		•

RENESOLA AMERICA INC.

1300 Clay Street, Suite 550, Oakland, CA 94612
 us.renesola.com | +1 (415) 852-7421
 marketing.us@renesola.com

The Replacement information listed is provided to help inform users of the various assumptions, factors, and methods involved when making lighting replacement decisions, and is for general information purposes only. ReneSola America disclaims all responsibility for any outcomes resulting from the use of this tool. Any reliance you place on this tool is therefore strictly at your own risk. Product information may be changed or updated without notice. Such product information includes the information provided in our data sheets and product disclosures. Accordingly, ReneSola America, as well as its affiliates, agents, and employees (collectively, "Renesola"), disclaims any and all liability for any errors or omissions contained in our information materials.

LED MR16



The ReneSola GU5.3 and GU10 projectors have been designed to replace the traditional GU5.3 and GU10 lamps with the same footprint. With a lifetime of 25,000 hours, this lamp offers energy savings of up to 80% and reduces maintenance costs. With a luminous flux up to 450 lumens, our versions GU5.3 and GU10 offer a performance equivalent to a 50W halogen lamp for only 7W of power.

FEATURES

- Environmentally friendly; free of mercury, UV and IR emissions.
- Integrated thermal design.
- Durable; increase amount of savings.
- Energy savings ROI up to 18 months.
- Suitable for damp locations.

APPLICATIONS

- Retail
- Restaurants
- Office
- Exhibition Halls
- Commercial

ADDITIONAL INFO

EQUIVALENT TO:

- Up to 50W Halogen.
- (See replacement chart for full details.)



STOCK STATUS:

- A** - Stocking Item
B - Limited Amount Stocking Item
C - Discontinued. Availability subject to change
MTO - Made To Order

TECHNICAL SPECIFICATION

Part No.	Category	Watt (W)	CCT (K)	Lumens (LM)	Base	Voltage	Size (Inch)	Weight (lb)	Energy Star	Status	Stock Locations	
											US	CAD
RM16007AA0102	MR16 - Non Dimmable	7W	3000K	400	GU5.3	AC/DC 120V	Ø1.97"*H1.97"	0.11		C	•	•
RM16D007AB0102	MR16 - Dimmable	7W	3000K	450	GU10	AC120V 60Hz	Ø1.97"*H1.97"	0.11		C		•
RM167GU1030K1T	2nd Gen MR16 - Dimmable	7W	3000K	450	GU10	AC120V 60Hz	Ø1.97"*H2.13"	0.13	✓	B		•

RENESOLA AMERICA INC.

1300 Clay Street, Suite 550, Oakland, CA 94612
 us.renesola.com | +1 (415) 852-7421
 marketing.us@renesola.com

The Replacement information listed is provided to help inform users of the various assumptions, factors, and methods involved when making lighting replacement decisions, and is for general information purposes only. ReneSola America disclaims all responsibility for any outcomes resulting from the use of this tool. Any reliance you place on this tool is therefore strictly at your own risk. Product information may be changed or updated without notice. Such product information includes the information provided in our data sheets and product disclosures. Accordingly, ReneSola America, as well as its affiliates, agents, and employees (collectively, "Renesola"), disclaims any and all liability for any errors or omissions contained in our information materials.

LED BR SERIES



The BR LED ReneSola lamp delights the eye with its powerful luminous flux and the energy saving it allows. The BR LED lamp reduces energy consumption by up to 80% compared to HID and CFL sources and up to 100W in Incandescent equivalence or 52W in CFL equivalence. With its instant lighting and powerful color rendering index (IRC), this lamp is ideal.

FEATURES

- Environmentally friendly; free of mercury and UV and emissions.
- Traditional BR shape.
- Up to 80% energy savings.
- Instant-on (No delay).
- Dimmable (Available on selected dimmers – see compatibility chart).
- Suitable for damp locations.

APPLICATIONS

- Offices
- Hospitality
- Retail
- Restaurants
- Residential

ADDITIONAL INFO

EQUIVALENT TO:

- Up to 100W Incandescent
 - Upt p 52W CFL
- (See replacement chart for full details.)



STOCK STATUS:

- A** - Stocking Item
- B** - Limited Amount Stocking Item
- C** - Discontinued. Availability subject to change
- MTO** - Made To Order

TECHNICAL SPECIFICATION

Part No.	Category	Watt (W)	CCT (K)	Lumens (LM)	Base	Voltage	Size (Inch)	Weight (lb)	Energy Star	Status	Stock Locations	
											US	CAD
RBR20D007C0104	BR20 - Dimmable	7W	3000K	550	E26	AC120V 60Hz	2.50"*3.82"	0.23		C	•	
RBR40D017C0104	BR40 - Dimmable	17W	3000K	1400	E26	AC120V 60Hz	4.72"*6.26"	0.66		C	•	
REBR200727K	BR20 - Dimmable	7W	2700K	550	E26	AC120V 60Hz	2.50"*3.82"	0.23	✓	C	•	•
REBR200730K		7W	3000K	550					✓	B	•	•
REBR200740K		7W	4000K	550					✓	C	•	•
REBR200750K		7W	5000K	550					✓	B	•	•



LED BR SERIES

-CONTINUED-

TECHNICAL SPECIFICATION

Part No.	Category	Watt (W)	CCT (K)	Lumens (LM)	Base	Voltage	Size (Inch)	Weight (lb)	Energy Star	Status	Stock Locations	
REBR301127K	BR30 - Dimmable	11W	2700K	850	E26	AC120V 60Hz	3.74"*5.08"	0.42	✓	C	•	•
REBR301130K		11W	3000K	850					✓	B	•	•
REBR301140K		11W	4000K	850					✓	C	•	•
REBR301150K		11W	5000K	850					✓	B	•	•
REBR401727K	BR40 - Dimmable	17W	2700K	1400	E26	AC120V 60Hz	4.72"*6.26"	0.66	✓	C	•	•
REBR401730K		17W	3000K	1400					✓	C	•	•
REBR401740K		17W	4000K	1400					✓	C	•	•
REBR401740K		17W	5000K	1400					✓	C	•	•

RENESOLA AMERICA INC.

1300 Clay Street, Suite 550, Oakland, CA 94612
 us.renesola.com | +1 (415) 852-7421
 marketing.us@renesola.com

The Replacement information listed is provided to help inform users of the various assumptions, factors, and methods involved when making lighting replacement decisions, and is for general information purposes only. ReneSola America disclaims all responsibility for any outcomes resulting from the use of this tool. Any reliance you place on this tool is therefore strictly at your own risk. Product information may be changed or updated without notice. Such product information includes the information provided in our data sheets and product disclosures. Accordingly, ReneSola America, as well as its affiliates, agents, and employees (collectively, "Renesola"), disclaims any and all liability for any errors or omissions contained in our information materials.

PAR SERIES



The ReneSola LED parabolic lamp has a curved shape and saves energy like no other lamp on the market. The Parabolic LED Lamp reduces energy consumption by up to 80% compared to HID and CFL sources and up to 100W HID equivalents and 52W in equivalence CFL. With its instantaneous ignition and its powerful IRC, this lamp is ideal.

FEATURES

- Environmentally friendly; free of mercury and UV and emissions.
- Traditional PAR shape.
- Up to 80% energy savings.
- Instant-on (No delay).
- Dimmable (Available on selected dimmers – see compatibility chart).
- Suitable for damp locations.

APPLICATIONS

- Offices
- Hospitality
- Retail
- Restaurants
- Residential

ADDITIONAL INFO

EQUIVALENT TO:

- Up to 100W Incandescent
 - Up to 52W CFL
- (See replacement chart for full details.)

MATERIALS:

Aluminum + PC



STOCK STATUS:

- A** - Stocking Item
B - Limited Amount Stocking Item
C - Discontinued. Availability subject to change
MTD - Made To Order

TECHNICAL SPECIFICATION

Part No.	Category	Watt (W)	CCT (K)	Lumens (LM)	Base	Voltage	Size (Inch)	Weight (lb)	Energy Star	Status	Stock Locations	
											US	CAD
REPAR160740D27K	PAR16 - Dimmable	7W	2700K	450	E26	AC120V 60Hz	Ø2.87"*H1.97"	0.15	✓	C		•
REPAR160740D30K		7W	3000K	450					✓	B		•
REPAR160740D40K		7W	4000K	450					✓	B		•
REPAR160740D50K		7W	5000K	450						C		•
REPAR200740D27K	PAR20 - Dimmable	7W	2700K	470	E26	AC120V 60Hz	Ø2.48"*H3.19"	0.24	✓	B	•	•
REPAR200740D30K		7W	3000K	470					✓	B	•	•
REPAR200725D27K		7W	2700K	470					✓	C	•	•
REPAR200725D30K		7W	3000K	470					✓	C	•	•

PAR SERIES

-CONTINUED-



TECHNICAL SPECIFICATION

Part No.	Category	Watt (W)	CCT (K)	Lumens (LM)	Base	Voltage	Size (Inch)	Weight (lb)	Energy Star	Status	Stock Locations US	CAD
REPAR301240D27K	PAR30 - Dimmable	12W	2700K	850	E26	AC120V 60Hz	Ø3.74"*H4.57"	0.50		C	•	•
REPAR301240D30K		12W	3000K	850	E26					C	•	•
REPAR301240D40K		12W	4000K	850	E26					C	•	•
REPAR301240D50K		12W	5000K	850	E26					C	•	•
REPAR301225D27K		12W	2700K	850	E26					C	•	•
REPAR301225D30K		12W	3000K	850	E26					C	•	•
REPAR381540D27K	PAR38 - Dimmable	15W	2700K	1050	E26	AC120V 60Hz	Ø4.72"*H5.16"	0.63	✓	C	•	•
REPAR381540D30K		15W	3000K	1050	E26				✓	B	•	•
REPAR381540D40K		15W	4000K	1050	E26					B	•	•
REPAR381540D50K		15W	5000K	1050	E26				✓	C	•	•
REPAR381525D27K		15W	2700K	1050	E26					C	•	•
REPAR381525D30K		15W	3000K	1050	E26				✓	C	•	•
RP20D007E0301	PAR20 - Dimmable	7W	2700K	470	E26	AC120V 60Hz	Ø2.48*H3.39	0.20		C		•
RP20D007E0306		7W	5000K	470	E26					C		•
RP20D007E0106		7W	3000K	470	E26					C		•
RP20D007E0108		7W	3000K	470	E26					C		•
RP30D011Z01B01	PAR30 - Dimmable	7W	3000K	850	E26	AC120V 60Hz	Ø3.74*H4.57	0.77	✓	A		•
RP30D011Z01D01		7W	4000K	850	E26				✓	A		•
RP30D012E0301		12W	2700K	850	E26					C		•
RP30D012E0106		12W	3000K	850	E26					C		•
RP38D015E0301	PAR38 - Dimmable	15W	2700K	1050	E26	AC120V 60Hz	Ø4.72*H5.12	1.04		C		•
RP38D017E0106		17W	3000K	1200	E26					C		•
RP38D017E0108		17W	3000K	1200	E26					C		•

RENESOLA AMERICA INC.

1300 Clay Street, Suite 550, Oakland, CA 94612
 us.renesola.com | +1 (415) 852-7421
 marketing.us@renesola.com

The Replacement information listed is provided to help inform users of the various assumptions, factors, and methods involved when making lighting replacement decisions, and is for general information purposes only. ReneSola America disclaims all responsibility for any outcomes resulting from the use of this tool. Any reliance you place on this tool is therefore strictly at your own risk. Product information may be changed or updated without notice. Such product information includes the information provided in our data sheets and product disclosures. Accordingly, ReneSola America, as well as its affiliates, agents, and employees (collectively, "Renesola"), disclaims any and all liability for any errors or omissions contained in our information materials.

LED CANDLE LIGHT



The Candelabra LED reneSola lamp is 100% retrofit to 40W incandescent lamps. This lamp reduces energy consumption by up to 80% and minimizes maintenance costs. Light bulbs are available in clear glass and equipped with a filament effect for sparkling brightness, making the lamp ideal for ambient lighting of your interior decoration.

FEATURES

- Environmentally friendly; free of mercury.
- An improved and low-profile design.
- High quality heat dissipation.
- Reduces energy consumption by up to 80%
- Dimmable (Available on selected dimmers – see compatibility chart).
- Suitable for damp locations.

APPLICATIONS

- Hotels
- Retail
- Restaurants
- Decorative

ADDITIONAL INFO

EQUIVALENT TO:

- 40W Incandescent
- (See replacement chart for full details.)



STOCK STATUS:

- A** - Stocking Item
- B** - Limited Amount Stocking Item
- C** - Discontinued. Availability subject to change
- MTO** - Made To Order

TECHNICAL SPECIFICATION

Part No.	Category	Watt (W)	CCT (K)	Lumens (LM)	Base	Voltage	Size (Inch)	Weight (lb)	Energy Star	Status	Stock Locations	
											US	CAD
RCD005I0101	Candle Light Dimmable	5W	2700K	325	E12	AC120V 60Hz	Ø1.38"*H3.82"	0.11	✓	C	•	•
RCD005I0102		5W	3000K	325	E12				✓	B	•	•
RCD005I0103		5W	4000K	325	E12					C		•
RCD005I0104		5W	5000K	325	E12					B		•

RENESOLA AMERICA INC.

1300 Clay Street, Suite 550, Oakland, CA 94612
 us.renesola.com | +1 (415) 852-7421
 marketing.us@renesola.com

The Replacement information listed is provided to help inform users of the various assumptions, factors, and methods involved when making lighting replacement decisions, and is for general information purposes only. ReneSola America disclaims all responsibility for any outcomes resulting from the use of this tool. Any reliance you place on this tool is therefore strictly at your own risk. Product information may be changed or updated without notice. Such product information includes the information provided in our data sheets and product disclosures. Accordingly, Renesola America, as well as its affiliates, agents, and employees (collectively, "Renesola"), disclaims any and all liability for any errors or omissions contained in our information materials.

LED G25 DECO GLOBE



The Renesola LED Globe lamp looks a lot like it is traditional counter part Globe lamp. This LED Deco series is ideal for replacing incandescent light sources. Its light output achieves up to a 40W incandescent equity. With its instant start and its powerful CRI, this lamp immediately creates the right atmosphere.

FEATURES

- Similar size and shape of regular bulbs
- High quality heat dissipation
- Instant bright; Quiet (no-hum) operation
- The body material is plastic with aluminum housing
- Constructed without mercury or lead
- Dimmable (See dimming compatibility list.)
- Suitable for damp locations

APPLICATIONS

- Art galleries and museums.
- Hospitality
- Retail
- Shopping Malls
- Offices
- Restaurants
- Residential

ADDITIONAL INFO

GENERAL USAGE

- Table/Floor lamps
- Wall Sconces
- Pendants



STOCK STATUS:

- A** - Stocking Item
- B** - Limited Amount Stocking Item
- C** - Discontinued. Availability subject to change
- MTO** - Made To Order

TECHNICAL SPECIFICATION

Part No.	Category	Watt (W)	CCT (K)	Lumens (LM)	Base	Voltage	Size (Inch)	Weight (lb)	Energy Star	Status	Stock Locations	
RG25D006B0101	Candelabra (Deco Globe)	6W	2700K	450	E26	AC 100-277 50/60HZ	Ø3.15*H4.78	0.14	✓	C	US	•
RG25D006B0102		6W	3000K	450	E26		Ø3.15*H4.78	0.14	✓	C		•

RENESOLA AMERICA INC.

1300 Clay Street, Suite 550, Oakland, CA 94612
us.renesola.com | +1 (415) 852-7421
marketing.us@renesola.com

The Replacement information listed is provided to help inform users of the various assumptions, factors, and methods involved when making lighting replacement decisions, and is for general information purposes only. ReneSola America disclaims all responsibility for any outcomes resulting from the use of this tool. Any reliance you place on this tool is therefore strictly at your own risk. Product information may be changed or updated without notice. Such product information includes the information provided in our data sheets and product disclosures. Accordingly, ReneSola America, as well as its affiliates, agents, and employees (collectively, "Renesola"), disclaims any and all liability for any errors or omissions contained in our information materials.

LED G9 LAMP



Intelligently rolled SMD LED substrate on a metal heatsink wrapped in a clear or frosted acrylic lens makes this 3.5W high performer lamp a proud replacement to 40W G9 halogen lamp. You can put this well designed lamp to the test side by side with its counterpart in 40W and you will not be able to tell the difference. The lamp offers up to 90% energy savings and minimize the maintenance costs.

FEATURES

- Life: L70 @ 10 000 hrs
- Lens options: Frosted & Clear lens
- Non-Dimmable
- 2 year warranty

APPLICATIONS

- Hospitality
- Retail
- Residential

ADDITIONAL INFO

GENERAL USAGE

- Chandeliers
- Pendants
- Wall Sconces
- Vanity Lights



STOCK STATUS:

- A** - Stocking Item
- B** - Limited Amount Stocking Item
- C** - Discontinued. Availability subject to change
- MTO** - Made To Order

TECHNICAL SPECIFICATION

Part No.	Category	Watt (W)	CCT (K)	Lumens (LM)	Base	Voltage	Size (Inch)	Weight (lb)	Energy Star	Status	Stock Locations	
											US	CAD
RGC004G9127K1	G9 Lamp	3.5W	2700K	330	G9	AC120V 60Hz	Ø0.69*H1.93	0.025		C		•
RGC004G9130K1		3.5W	3000K	330	G9		Ø0.69*H1.93	0.025		B		•
RGC004G9140K1		3.5W	4000K	330	G9		Ø0.69*H1.93	0.025		C		•
RGC004G9150K1		3.5W	5000K	330	G9		Ø0.69*H1.93	0.025		C		•

RENESOLA AMERICA INC.

1300 Clay Street, Suite 550, Oakland, CA 94612
 us.renesola.com | +1 (415) 852-7421
 marketing.us@renesola.com

The Replacement information listed is provided to help inform users of the various assumptions, factors, and methods involved when making lighting replacement decisions, and is for general information purposes only. ReneSola America disclaims all responsibility for any outcomes resulting from the use of this tool. Any reliance you place on this tool is therefore strictly at your own risk. Product information may be changed or updated without notice. Such product information includes the information provided in our data sheets and product disclosures. Accordingly, Renesola America, as well as its affiliates, agents, and employees (collectively, "Renesola"), disclaims any and all liability for any errors or omissions contained in our information materials.

**LED SURFACE MOUNTING KIT****UN-SHUNTED TOMBSTONES****MINI ALU REFLECTOR****ALU REFLECTOR****PC REFRACTOR W/COVER****WIREGUARD****RENESOLA AMERICA INC.**

1300 Clay Street, Suite 550, Oakland, CA 94612
 us.renesola.com | +1 (415) 852-7421
 marketing.us@renesola.com

The Replacement information listed is provided to help inform users of the various assumptions, factors, and methods involved when making lighting replacement decisions, and is for general information purposes only. ReneSola America disclaims all responsibility for any outcomes resulting from the use of this tool. Any reliance you place on this tool is therefore strictly at your own risk. Product information may be changed or updated without notice. Such product information includes the information provided in our data sheets and product disclosures. Accordingly, ReneSola America, as well as its affiliates, agents, and employees (collectively, "Renesola"), disclaims any and all liability for any errors or omissions contained in our information materials.

LED SURFACE MOUNTING KIT

(TO BE USED WITH FLAT PANELS)



A room that could use some ReneSola LED Panels but no recessed option? Problem solved with our easy-to-install flush mount kit for our 1x4, 2x2, and 2x4 panels. Simply assemble the frame and screw into the ceiling surface and slide the panel right in.

FEATURES

- Beautiful appearance.
- Aluminum frame.
- Enables ReneSola Panels to surface mount to ceilings (such as dry wall).

OPTIONS

Available in:

- 1'x4'
- 2'x2'
- 2'x4'

ADDITIONAL INFO

TO BE USED WITH:

- 1x4, 2x2, 2x4 Panels

MATERIALS:

Aluminum

INSTALLATION METHOD

1. Assemble all four pieces of the frame with two screws on each corner.
2. Attach assembled frame to the ceiling with sheet rock screws.
3. Detach one piece of the frame and slide panel light into grooves.
4. Place back the detached frame piece.

STOCK STATUS:

- A** - Stocking Item
B - Limited Amount Stocking Item
C - Discontinued. Availability subject to change
MTO - Made To Order

TECHNICAL SPECIFICATION

Part No.	Category	Base	Size (Inch)		DLC	Status	Stock Locations	
							US	CAD
RPN-FRC01	1x4 Surface Mounting Kit - New	Flush Mount Bracket	1x4	2.76		B		•
RPN-FRC02	2x2 Surface Mounting Kit - New		2x2	3.03		B		•
RPN-FRC03	2x4 Surface Mounting Kit - New		2x4	3.42		B		•
RPN-FRB01	1x4 Surface Mounting Kit - Old		1x4	2.76		C		•
RPN-FRB02	2x2 Surface Mounting Kit - Old		2x2	3.03		C	•	•
RPN-FRB03	2x4 Surface Mounting Kit - Old		2x4	3		C	•	•

RENESOLA AMERICA INC.

1300 Clay Street, Suite 550, Oakland, CA 94612
 us.renesola.com | +1 (415) 852-7421
 marketing.us@renesola.com

The Replacement information listed is provided to help inform users of the various assumptions, factors, and methods involved when making lighting replacement decisions, and is for general information purposes only. ReneSola America disclaims all responsibility for any outcomes resulting from the use of this tool. Any reliance you place on this tool is therefore strictly at your own risk. Product information may be changed or updated without notice. Such product information includes the information provided in our data sheets and product disclosures. Accordingly, Renesola America, as well as its affiliates, agents, and employees (collectively, "Renesola"), disclaims any and all liability for any errors or omissions contained in our information materials.



LED UNSHUNTED SOCKET

(TO BE USED WITH INTERNAL DRIVER TUBES.)

The LED unshunted socket is exceptionally easy to use; it is designed to work with nearly all T8 and T12 fluorescent linear lamps.

FEATURES

- White PBT Body
- Copper Alloy unshunted contacts
- With top test
- UL496 and UL1598 listed
- Non-shunted Tombstone Lampholders for T8-T12 Fluorescent Linear Lamps to be wired with Renesola internal drive T8.

OPTIONS

Available without Nib.

ADDITIONAL INFO

** Pair of unshunted sockets are free with every Internal T8 piece purchased. (While supplies last, must be noted on PO.)

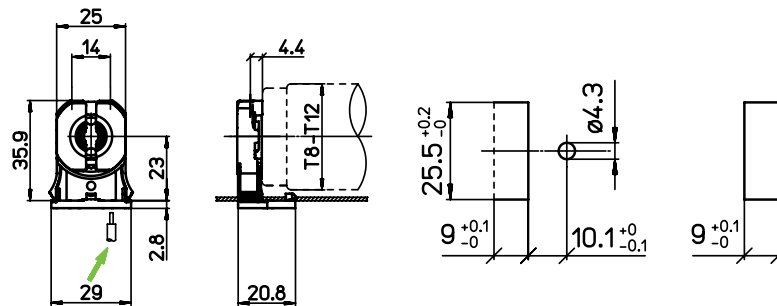
** Unshunted sockets are also available for separate purchase.

STOCK STATUS:

- A** - Stocking Item
- B** - Limited Amount Stocking Item
- C** - Discontinued. Availability subject to change
- MTO** - Made To Order

TECHNICAL SPECIFICATION

Part No.	Category	CCT	Size (Inch)	Weight (lb)	Energy Star	Status	Stock Locations	
							US	CAD
3249-9/5-SN-U-PBT-4SALE	T8/T12 Lampholder Non-Shunted w/o Nib		See below diagram.	6		B	•	



RENESOLA AMERICA INC.

1300 Clay Street, Suite 550, Oakland, CA 94612
 us.renesola.com | +1 (415) 852-7421
 marketing.us@renesola.com

The Replacement information listed is provided to help inform users of the various assumptions, factors, and methods involved when making lighting replacement decisions, and is for general information purposes only. ReneSola America disclaims all responsibility for any outcomes resulting from the use of this tool. Any reliance you place on this tool is therefore strictly at your own risk. Product information may be changed or updated without notice. Such product information includes the information provided in our data sheets and product disclosures. Accordingly, ReneSola America, as well as its affiliates, agents, and employees (collectively, "Renesola"), disclaims any and all liability for any errors or omissions contained in our information materials.

ROUND Highbay ACCESSORIES



The Renesola Round Highbays offer multiple accessories to support the installation.

FEATURES

- Accessories are optional and come as an adder in price.
- RHBR-ARS090 are compatible with 50W and 90W.
- All other accessories are compatible with 1000W-300W versions.

OPTIONS

- Mini ALU Reflector
- ALU Reflector
- PC Refractor with cover
- Wireguards

ADDITIONAL INFO

TO BE USED WITH:
Round Highbays



TECHNICAL SPECIFICATION

Part No.	Category	Watt (W)	CCT (K)	Lumens (LM)	Base	Voltage	Size (Inch)	Weight (lb)	Energy Star	Status	Stock Locations	
											US	CAD
RHBR-ARS090	Mini ALU reflector for 50-90W	100W	5000K	13000		AC277-480V 50/60Hz	15*257*15		✓	B		•
RHBR-AR1030	ALU reflector for 100-300W	120W	5000K	15600		AC277-480V 50/60Hz	15*257*15		✓	B		•
RHBR-PCR1030	PC Diffuser w/cover for 100-300W	150W	5000K	19500		AC277-480V 50/60Hz	15*257*15		✓	B		•
RHBR-WG1030	Wireguard for 100-300W	200W	5000K	26000		AC277-480V 50/60Hz	15*257*15		✓	B		•

STOCK STATUS:

A - Stocking Item
B - Limited Amount Stocking Item
C - Discontinued. Availability subject to change
MTD - Made To Order

RENESOLA AMERICA INC.

1300 Clay Street, Suite 550, Oakland, CA 94612
 us.renesola.com | +1 (415) 852-7421
 marketing.us@renesola.com

The Replacement information listed is provided to help inform users of the various assumptions, factors, and methods involved when making lighting replacement decisions, and is for general information purposes only. ReneSola America disclaims all responsibility for any outcomes resulting from the use of this tool. Any reliance you place on this tool is therefore strictly at your own risk. Product information may be changed or updated without notice. Such product information includes the information provided in our data sheets and product disclosures. Accordingly, ReneSola America, as well as its affiliates, agents, and employees (collectively, "Renesola"), disclaims any and all liability for any errors or omissions contained in our information materials.

STANDARD LIMITED WARRANTY



Although the information in this catalog is presented in good faith and believed to be correct at the time of printing, ReneSola makes no representations or warranties as to the completeness or accuracy of the information. ReneSola has no liability for any errors or omissions in the materials. ReneSola reserve the right to change, delete, or otherwise modify the information which is represented without any prior notice. Persons receiving this information will make their own determination as to its suitability for their own purposes prior to use. In no event will ReneSola be responsible for damages of any nature whatsoever resulting from the use of or reliance upon information from this catalog or the products to which the information refers.

This standard limited warranty ("Limited Warranty") is provided by RENESOLA (the "Seller") through the applicable warranty period for LED lighting products (the "Product") to an original purchaser that is identified on Seller's invoice reflecting the original purchase, until this Limited Warranty document is later superseded. The Seller is the regional RENESOLA branch identified on the invoice. This Limited Warranty applies to all Products purchased directly from Seller between the date directly stated above and date on which this Limited Warranty document is later superseded. Under this Limited Warranty, RENESOLA will honor valid warranty claims made by the original purchaser pursuant to the terms provided herein in connection with warranty claims made to the original purchaser by its direct and indirect customers. Please contact your local RENESOLA office if you have a potential warranty claim (please refer to Section K).

A. WARRANTY PERIOD

This Limited Warranty warrants against defects in materials or workmanship for any of the Products throughout a warranty period of 5 years (exception: 3 year warranty period for 1st generation corn lights) from the date of original invoice by RENESOLA to the original purchaser of the Products ("Warranty Period"). A completed warranty claim regarding such defect must be received by the appropriate regional RENESOLA office prior to the expiration of the Warranty Period in order to remain eligible; any completed warranty claim that is received after the Warranty Period, or any incomplete warranty claim received at any time, shall not be eligible for any remedies under the Limited Warranty.

B. ON-SITE TECHNICAL SUPPORT

RENESOLA may provide free on-site technical support during the Warranty Period in the event of malfunction of the Product. Please contact your local RENESOLA customer service for technical issues you may be experiencing.

C. PRODUCT REPLACEMENT

For every product that demonstrably fails because of a material or workmanship defect within the relevant warranty period, RENESOLA will provide a free-of-charge replacement unit for each failed unit. Determination of whether the Product is non-conforming will be made by Seller in its sole discretion with consideration given to the overall performance of the Product. For Products with multiple LED components, an individual unit will be considered non-conforming if 10% or more of the LED components of that unit fails. The replacement unit will be the sole remedy provided by RENESOLA under this Limited Warranty, provided that in the event replacement units are not available for any reason, Seller may alternatively repair or partially credit the purchase price of the product (i.e., credit in the amount of the purchase price pro-rated by the remainder of the warranty period). For purpose of clarity, the replacement remedy under this Limited Warranty does not include the removal or reinstallation of Product, and you will be responsible for all labor costs and other fees or damages in connection with the removal and/or re-installation of the Product. RENESOLA will not be responsible or be obligated to reimburse for any such labor costs, fees, or damages.

D. RETURN OF NON-CONFORMING PRODUCT

RENESOLA may require at its discretion that the non-conforming product be returned to RENESOLA for analysis. RENESOLA may require that the non-conforming product is returned before the replacement product is issued. A Returned Materials Authorization (RMA) number must be issued by RENESOLA before the product is returned. If merchandise is returned without an RMA, RENESOLA may withhold the delivery of replacement units. Products must be returned freight prepaid, which will be payable by RENESOLA if it meets proper inspection. You agree to adhere to all instructions by RENESOLA regarding such returns, and to return the non-conforming product in either its original packaging or any other packaging that provides equal and sufficient protection of the product. Failure to return the non-conforming product within 30 days of Seller's issuance of the RMA number will disqualify the warranty claim and void this Limited Warranty.

E. SHIPPING

If RENESOLA has a regional warehouse in your country, RENESOLA will replace the non-conforming Product directly from local inventory. Otherwise, if sea freight is required, RENESOLA shall be responsible for all reasonable and customary transportation charges regarding the replacement. In the event that RENESOLA provides a replacement unit, RENESOLA's liability ceases upon receipt of such replacements by the carrier. RENESOLA shall not be responsible for any loss, damage or theft sustained in transit. You agree to make all claims of such character promptly against the carrier.

F. LIMITED LUMINOUS FLUX WARRANTY

Subject to the provisions of this Limited Warranty, RENESOLA also warrants the luminous performances of its Products during the Warranty Period, such that the luminous flux will maintain a minimum level of 70% of the initial nominal flux specified in the applicable product technical datasheet (or RENESOLA lighting application study with a supply of nominal current), provided that the average ambient temperature does not exceed the rated Tq performance temperature and given a tolerance of 5% on the

STANDARD LIMITED WARRANTY



nominal current. In the event that a Product experiences luminous decay in excess of the technical specifications and installation instructions, RENESOLA will repair or replace the non-conforming Product as the sole remedy under this limited luminous flux warranty. Determination of luminous performance shall be at RENESOLA's sole discretion, and which may involve official photometrical measurements to be performed by RENESOLA or an accredited laboratory with protocol satisfactory to RENESOLA.

G. OTHER APPLICABLE WARRANTY

This Limited Warranty is provided by default to the original purchaser. For certain orders, RENESOLA may provide extended or contractual warranties, in addition to the Limited Warranty, to the original purchaser in select circumstances. Otherwise, unless expressly provided under this Limited Warranty or unless at Seller's direction, all other information or documentation should be excluded from modification of this Limited Warranty.

H. CONDITIONS

The Limited Warranty is expressly conditioned on the following provisions:

1. The Limited Warranty covers only LED products that are operated pursuant to RENESOLA specifications, applicable IEC regulations, and the following specifications:
 - a. Operating conditions must be in accordance with the information on the Product and its packaging;
 - b. Relative humidity in the installation never exceeds 80% RH, or never exceeds the IP rating of the Product, if any.
 - c. The Product is not subjected to more than a total of 50,000 switching cycles;
 - d. The electrical installation in which the Product operates is not subjected to voltage fluctuation exceeding $\pm 10\%$ of the operating voltage standard of the applicable country of installation.
2. Any replacement Product will be comparable in function but may not be identical to the original Product. RENESOLA has the sole right and discretion to deliver another product type (with different attributes such as size, color, shape, or power) as a comparable replacement.
3. RENESOLA shall not be obligated to pay or reimburse any fees or expenses related to any labor, shipping and transportation, and/or other costs, unless otherwise expressly specified in this Limited Warranty.
4. Warranty claims will only be handled by the RENESOLA office of the corresponding region, as determined by the location where the non-conforming product was installed. No RENESOLA affiliate is obligated to handle any warranty claim for products installed outside its corresponding region.

I. OTHER EXCLUSIONS AND LIMITATIONS

This Limited Warranty does not include or cover (and the corresponding warranty claim will not be honored for) any of the following:

1. Coverage for any Product that has been subjected to:
 - a. Misuse (i.e., use not as intended by manufacturer), abuse, neglect, or accident;
 - b. Alteration, improper installation, or damage sustained during transport which the purchaser is responsible for;
 - c. Failure to observe RENESOLA installation manual and guidelines;
 - d. Installation, repair, or modification by an individual other than a licensed electrician or authorized RENESOLA representative;
 - e. Power failure, surge, lightning, flood, fire, accidental breakage, action by a third party, or any other event outside RENESOLA's reasonable control or expectation;
 - f. Inadequate environment or any other environment that deviates from the proper operation conditions referenced in the RENESOLA instructions manual and guidelines;
 - g. Abnormal environment conditions, including, without limitation, improper voltage, acid rain, mobile or marine environment, other pollution, and damages due to defective construction base on which the Product is mounted;
 - h. External corrosion, mold discoloration, or the like;
 - i. The use of accessories or other peripheral devices which are not intended for use with the Product;
 - j. Removal from the original installation; or
- k. Any other violation of any applicable recommendation by RENESOLA or of any standard, code, or instructions for use in installations, including, without limitation, those contained in the National Electrical Code, the Standards for Safety of Underwriters Laboratory, Inc., and Standards for the International Electrotechnical Commission.
2. Coverage for any Product whose serial number has been altered, removed or made illegible.
3. Coverage for any Product subjected to maintenance or repair by an individual not authorized by Seller.
4. Payment, reimbursement, or coverage for any cost associated with installation, removal, or reinstallation (or customs clearance if applicable) of the Product.

STANDARD LIMITED WARRANTY



J. LIMITED LIABILITY AND DISCLAIMERS

TO THE FULL EXTENT PERMITTED BY APPLICABLE LAW, AND UNLESS RENESOLA EXPRESSLY AGREES OTHERWISE IN A SIGNED OR AUTHORIZED WRITING, THE LIMITED WARRANTY IS EXCLUSIVE AND IN LIEU OF ALL OTHER WARRANTIES, CONDITIONS, AND GUARANTEES, WHETHER WRITTEN, ORAL, EXPRESS, IMPLIED, OR STATUTORY. ALL OTHER EXPRESS OR IMPLIED OR STATUTORY WARRANTIES, INCLUDING WARRANTY OF MERCHANTABILITY, FITNESS FOR A PARTICULAR PURPOSE OR USE OR APPLICATION, QUALITY, WORKMANLIKE EFFORT, OR ARISING FROM COURSE OF DEALING OR PERFORMANCE, OR TRADE PRACTICE, DO NOT APPLY TO THE PRODUCTS AND ARE HEREBY DISCLAIMED. TO THE FULLEST EXTENT PERMITTED BY APPLICABLE LAW, IN NO EVENT SHALL RENESOLA OR ITS LICENSORS BE LIABLE FOR ANY INDIRECT, INCIDENTAL, CONSEQUENTIAL, SPECIAL, OR PUNITIVE DAMAGES OR LOSSES, WHETHER A CLAIM IS BASED ON CONTRACT, INDEMNITY, WARRANTY, TORT, STRICT LIABILITY, OR ANY OTHER LEGAL OR EQUITABLE THEORY, AND REGARDLESS OF WHETHER RENESOLA OR THE OTHER PARTY HAS BEEN ADVISED OF THE POSSIBILITY OF SAID DAMAGES OR LOSSES, WHICH INCLUDES WITHOUT LIMITATION, LOSS OF PROFIT OR REVENUE, LOSS OF BUSINESS OPPORTUNITIES, LOSS OF PRODUCTION, AND LOSS OF GOODWILL. SUBJECT TO APPLICABLE LAW AND UNLESS EXPRESSLY SPECIFIED OTHERWISE IN THIS LIMITED WARRANTY, THIS LIMITED WARRANTY SETS FORTH THE PROVISION OF THE REPLACEMENT UNIT PRODUCT AS THE EXCLUSIVE REMEDY FOR ALL CLAIMS BASED ON FAILURE OF OR DEFECT IN THE PRODUCTS AND INCIDENTAL SERVICES PROVIDED, WHETHER SUCH FAILURE OR DEFECT ARISES BEFORE OR DURING THE APPLICABLE WARRANTY PERIOD, AND WHETHER A CLAIM IS BASED ON CONTRACT, INDEMNITY, WARRANTY, TORT (INCLUDING NEGLIGENCE), STRICT LIABILITY, OR OTHERWISE.

Some jurisdictions do not allow the exclusion or limitation of incidental or consequential damages. Any implied warranties, including the implied warranties of merchantability or fitness for a particular purpose, are limited to one year or the shortest period allowed by law. This Limited Warranty gives you specific legal rights, and you may also have other rights which vary from jurisdiction to jurisdiction. To know what your legal rights are, consult your local or state consumer affairs office or attorney general.

K. OBTAINING WARRANTY PERFORMANCE AND WARRANTY CLAIM PROCEDURE

If you have a justifiable claim covered by this Limited Warranty, please send to the applicable RENESOLA regional office (available at www.renesola.com/contact), by phone, email, or registered letter, an immediate notification of your potential warranty claim. Your notification should also include the following:

1. Brief description of the non-conformity;
2. Serial number(s) of the non-conforming Product;
3. Date on which the non-conforming Product was purchased by you; and
4. If available, an invoice clearly indicating the contract number, purchase date, purchase price, product type, and RENESOLA stamp or signature.

After contacting your regional RENESOLA customer service for initial reporting of the non-conformity and initial troubleshooting, if unresolved, you may submit the Warranty Card to the regional RENESOLA customer service department by email or fax. If the claim is approved and the product is not yet installed, RENESOLA will usually send replacement units for shipping within five (5) business days. The non-conforming product should be packed in its original packaging materials for return shipping to the closest regional RENESOLA branch within thirty (30) days of RENESOLA's issuance of the RMA (please refer to Section D). Additional information may be required at RENESOLA's request. All dates and time periods mentioned in this Limited Warranty are estimates only, and are subject to a RENESOLA representative having access to the non-conforming product or customer cooperation. Special circumstances (e.g., purchase occurring outside the country of installation) may also require additional time for warranty performance.

L. FORCE MAJEURE

RENESOLA shall not be responsible or liable in any way to the claimant or any third party arising from any non-performance or delay in performance of any terms and conditions of sale, including this Limited Warranty, due to any of the following events: act of God, war, riot, strike, warlike conditions, plague or other epidemic, fire, flood, unavailability of suitable and sufficient labor or raw material, capacity or technical or yield failures, or any other similar cause or circumstances beyond the reasonable control of RENESOLA, including, without limitation, any technological or physical event or condition which is not reasonably known or understood at the time of the sale of the non-conforming Product. In such cases, RENESOLA may suspend performance of its obligations under this Limited Warranty without liability for the period of delay reasonably attributable to such events.



THANK YOU!