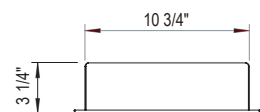
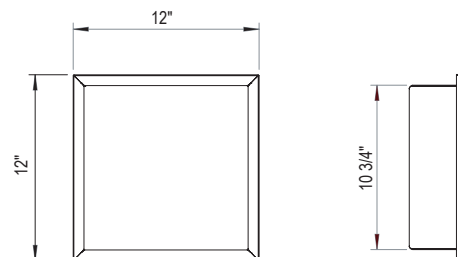


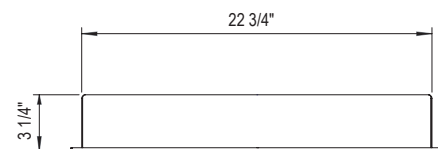
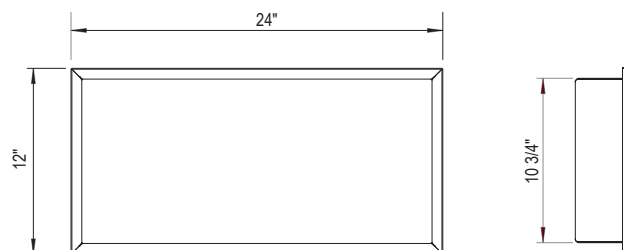
FEATURES:

- Stainless Steel (304) Construction with Choice of Finishes

*Note: Not Available in SC, ABM, ACM, TB, OB, BB



* HOLE SIZE 10 3/4" x 10 3/4"



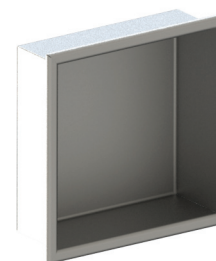
* HOLE SIZE 22 3/4" x 10 3/4"

CONTACT US:

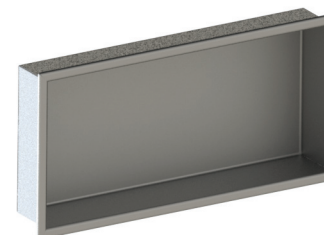
If you need assistance with installation, replacement parts or have any questions regarding your Rubinet product, please call a Customer Service representative at: 905-851-6781 toll free 1-800-461-5901 or visit www.rubinet.com

140307

THE **Rubinet** FAUCET COMPANY

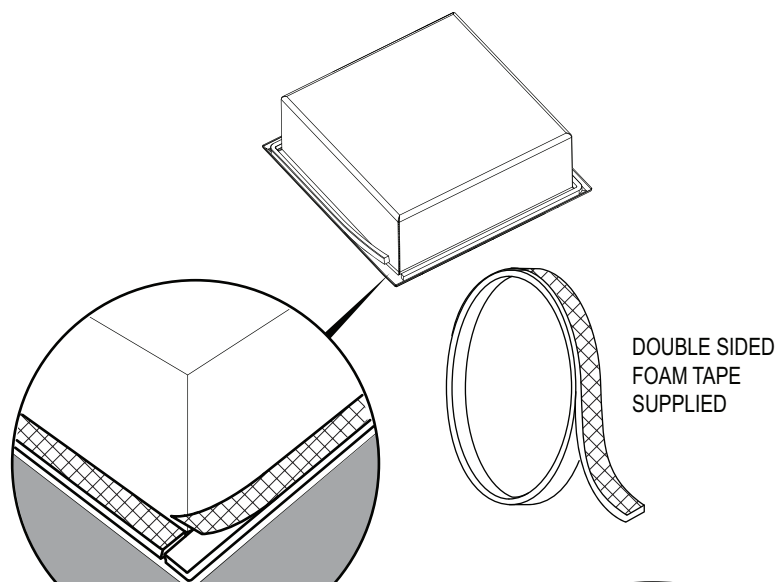
ASSEMBLY INSTRUCTION**9TWN1 or 2****WALL NICHE**

9TWN1 (12" x 12")

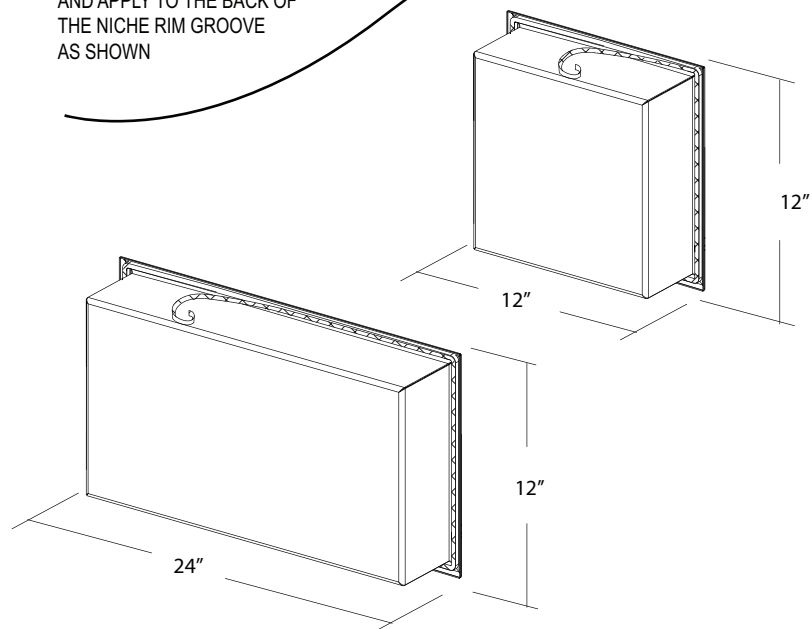


9TWN2 (12" x 24")

1

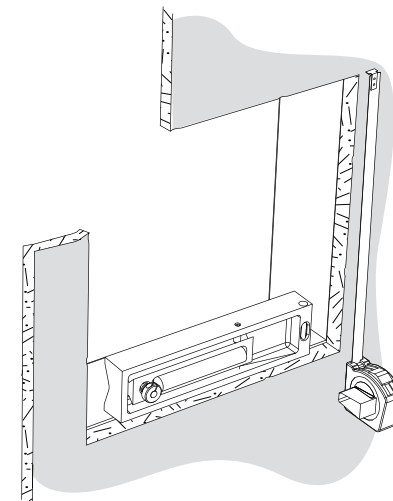
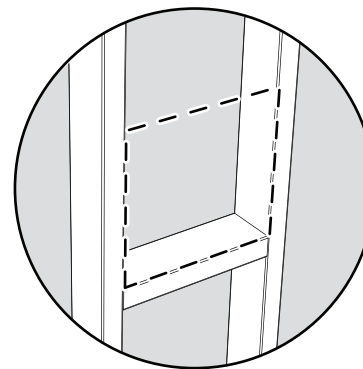


CUT THE TAPE INTO 4 PIECES
AND APPLY TO THE BACK OF
THE NICHE RIM GROOVE
AS SHOWN

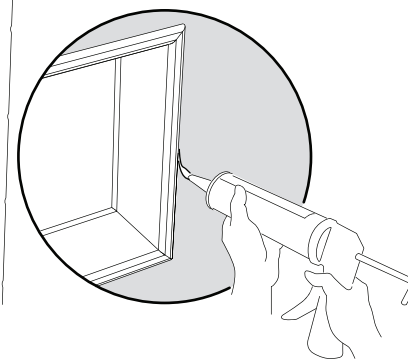
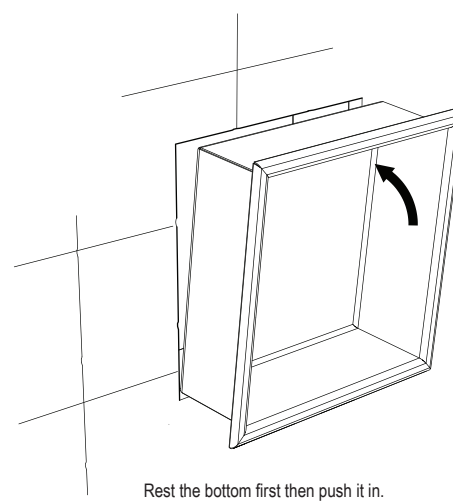


2

* Boxing the hole with stud recommended
for maximum support as shown below



* MUST refer to the specification when cutting the hole.



Apply silicone caulking all around the edge