



Product Catalogue

Control solutions that define the market

SALUS[®]
C O N T R O L S

About SALUS

SALUS Controls is an engineering design and brand distribution company providing energy control solutions to professional market across the world. By understanding the unique complexity of each market where we do business, we develop solutions that define the market by delivering product innovation, cost savings, logistical efficiencies and speed-to-market.

SALUS Controls is a member of Computime Group Ltd, Hong Kong, widely regarded for its electronic control technologies, research & design capabilities and manufacturing services. It occupies a unique niche in appliance, heating, air conditioning, smart energy and building automation sectors, serving customers in commercial, industrial and consumer markets throughout Asia, North America and Europe since 1974.

Our talented team at SALUS Controls works diligently to deliver product solutions at the lowest cost of ownership, enabling our customers to be more profitable, honour their commitments and stand out in their markets.

Our actions define us. We believe in building strong, enduring relationships with our team members, customers, suppliers and communities.

SALUS Controls builds solid partnerships and provides dependable solutions to enable our customers' success. We have a performance culture which seeks to anticipate our customers' requirements with quickness and flexibility. Most importantly, we offer our customers fast service and exceptional professional support.



Index

Product pages

HVAC Optima	04
Wyse.ly system	08
Wireless RF Systems	13
Wired Systems	16

In the brochure, the following
Markings used:

- 24V** Available in 24V (AC)
- VOLT FREE** Potential-free contacts
- TRIAC** Triac / 100% silent
- RF** Radio Frequency

HVAC Optima System

The OPTIMA is a feature packed simple to operate electronic room thermostat which provides temperature control for heating and cooling systems. The control accuracy of the OPTIMA will improve system efficiency and reduce running costs. Along with other smart products in the range it provides a simple to fit and easy to operate smart home solution.





HVAC OPTIMA



ST880ZB Optima Thermostat for HVAC White

A touch ring provides a simple and easy to use interface for the Optima thermostat, a multi-stage controller for all types of HVAC systems. It is powered via the R+C wires, or 2 AA alkaline batteries which can provide over 18 months of operation.

Power Supply	24VAC or 2 AA alkaline batteries
Wireless Protocol	ZigBee HA 1.2
Operating Temp:	0 – 50 °C, 32 – 122 °F
Dimensions	W-107 x H-107 x D-28.5mm H-4.2" x W-4.2" x D-1.12"

Features

- 3 heat / 2 cool heat pump support
- 2 heat / 2 cool conventional support
- Short Cycle protection
- Residual Cooling Fan delay timer
- Frost protection
- Auto heat cut-off
- Positive Segmented LCD display
- Internal clock and calendar, network synchronization if available
- Network accessible humidity sensor
- Network accessible adjustment of Short Cycle and Residual Cooling Fan times
- 24VAC or 2AA batteries



ST880ZBPB Optima Thermostat for HVAC Piano Black

A touch ring provides a simple and easy to use interface for the Optima thermostat, a multi-stage controller for all types of HVAC systems. It is powered via the R+C wires, or 2 AA alkaline batteries which can provide over 18 months of operation.

Power Supply	24VAC or 2 AA alkaline batteries
Wireless Protocol	ZigBee HA 1.2
Operating Temp:	0 – 50 °C, 32 – 122 °F
Dimensions	W-107 x H-107 x D-28.5mm H-4.2" x W-4.2" x D-1.12"

Features

- 3 heat / 2 cool heat pump support
- 2 heat / 2 cool conventional support
- Short Cycle protection
- Residual Cooling Fan delay timer
- Frost protection
- Auto heat cut-off
- Positive Segmented LCD display
- Internal clock and calendar, network synchronization if available
- Network accessible humidity sensor
- Network accessible adjustment of Short Cycle and Residual Cooling Fan times
- 24VAC or 2AA batteries



ST898ZB

A deep black touchscreen display provides a modern look with an intuitive interface for the Optima S thermostat, a multi-stage controller for all types of HVAC systems. It can be powered via the R+C wires, or 2 AA alkaline batteries for up to 18 months of operation.

Power Supply	24VAC or 2 AA alkaline batteries
Wireless Protocol	ZigBee HA 1.2
Operating Temp:	0 – 50 °C, 32 – 122 °F
Dimensions	W-107 x H-107 x D-28.2mm H-4.2" x W-4.2" x D-1.12"

Features

- 3 heat / 2 cool Heat Pump support
- 2 heat / 2 cool Conventional support
- Auto Heat/Cool change over
- Deep black LCD touchscreen display
- Display Dimming available when using C-wire
- Simple display mode available
- Clock and calendar available when networked
- Humidity displayed
- Push Down wiring terminals
- Frost Protection
- Network adjustment of:
 - Short Cycle Protection timer
 - Residual Fan timer



SG888ZBWH Universal Gateway

The core of the network, the ZigBee Gateway allows ZigBee devices in the home to communicate with each other and the outside world via the WiFi connection to the home's network. Paired with the Wyse.ly System, the ZigBee Gateway helps bring the Wyse.ly intelligence into the home.

Power Supply	5V, USB micro-A connector 120VAC 60Hz NEMA 1, Type A USB adapter included
Wireless Protocol	ZigBee HA 1.2; WiFi b,g,n
Operating Temp:	-10 to 50 °C / 14 to 122 °F
Dimensions	dia -89 H-56mm dia -3.5" H-2.2"

Features

- RJ45 Ethernet connection available
- Available in two colors: cc =
WH – White
BK – Black



SX885ZBLG Smart Plug US Light Gray

A network controllable AC power switch in a standard (NEMA 5-15, Type B) grounded outlet that can help monitor energy usage. Will not block outlets in a standard single gang duplex socket.

Power Supply	120VAC, 60Hz
Wireless Standard	ZigBee HA 1.2
Operating temp:	0 – 40 °C, 32 – 104 °F
Dimensions	Not including plug: 54 x 37 x 38 mm 2.13" x 1.46" x 1.49" Including plug: 54 x 37 x 59 mm 2.13" x 1.46" x 2.32"

Features

- Two miniSmartPlugs can fit in a duplex outlet
- Switch resistive loads up to 15A
- Available in five colors: cc =
BB – Baby Blue
DG – Dark Gray
DR – Dusty Rose
LG – Light Gray
MN – Mint Green
- Turn-on Load Sensing
- Network accessible power reading
- Network accessible cumulative energy reading



SS881ZB Embedded Door Sensor

Detecting the open/close state of a door without disturbing the décor of the home is what the Embedded Door Sensor is all about. And it adjusts for gaps up to ¼" between the door and the frame. Adaptable and inconspicuous.

Power Supply	CR2 3V lithium battery
Wireless Protocol	ZigBee HA 1.2
Operating Temp:	0 – 40 °C, 32 – 104 °F
Dimensions	20 dia x 67 L mm 0.78" dia x 2.64" L"D

Features

- Adjustable to fit gaps up to ¼"
- Able to be flush mounted
- Tamper switch
- Can be mounted in the lintel or in the door if not a metal door



SS882ZB Window / Door Sensor

Magnetic door/window sensor allows wide gap before triggering to adjust to uneven surfaces between the frame and the door or window. Water resistant, so it can be used outdoors if mounted properly and temperatures are not extreme.

Power Supply	CR3032 3V lithium battery
Wireless Protocol	ZigBee HA 1.2
Operating temp	0 – 40 °C, 32 – 104 °F
Dimensions Sensor:	H-55x W-40x D-12mm H-2.2" W-1.6" D-0.5"
Magnet:	H-55x W-16x D-12mm H-2.2" W-0.6" D-0.5"

Features

- Up to 1" magnet-sensor separation
- Thin profile
- Water resistant

Wyse.ly[®]

As technology advances more and more devices are becoming wireless, bringing the dream of a fully automated home closer to a reality. With the SALUS Wyse.ly system, you can let your appliances do the hard work for you, delivering control to your Smartphone, Tablet or PC. The SALUS Wyse.ly system will save you time and energy so you can focus on enjoying the things that are important to you.



Control multiple devices
from anywhere via y

Make your home a smart home

Control and schedule electrical appliances. Set lights to come on automatically when you enter your home or set your washing machine to do the wash one hour before you return home.

Control products in the SALUS Wyse.ly range from anywhere via the simple to use App, available on IOS and Android.

Wyse.ly system

s in the Wyse.ly range
your smartphone, tablet or PC.

...How it works

Products in the SALUS Wyse.ly range can operate independently, as a group of same products or with other products in the range. This is made possible by creating simple rules in the app. To begin, the user needs the SG888ZBWH Universal Gateway and the free app from the AppStore or Google Play. Then, the user can add any product of SALUS Wyse.ly series and operate.



Example 1

Multiple Smart Plugs

This example shows three Smart Plugs as a group with the lights in the apartment connected. By using the "One Touch Rules" with the Smart Plugs the lights can be switched on individually or as a group. They can also be adjusted so that they interact with other products from the SALUS Wyse.ly series. All controlled via your smartphone from anywhere.

WYSE.LY SYSTEM



Window / door sensor detects when they are open and displays on the APP.



Smart Plug connected to lights and other electronic household items all controlled from the App.



Room thermostat and TRV's installed in every room for individual room control.

Wyse.ly system

Example 2 Mixed products

All of the products can be controlled individually or as a group. It is possible in one room to control both temperature and smart plug and to set the heating to turn off when the window is open. With a door sensor, it is possible to turn on specific contacts or lamps when the door opened.



WYSE.LY SYSTEM



AS20WRF/AS20BRF Zigbee Digital Control, Battery operated

Can be used as a stand alone thermostat, as part of a group of thermostats or as a timer. The AS20 room thermostat communicates with the thermostatic valve head, or the actuators via the coordinator. Therefore the AC10RF is necessary for the system. An additional probe connection available (optional sensor).

Power Supply	4 x AAA Alkalie Batteries
Radio-frequency	Zigbee 2.4 Ghz
Operating temp	5-35°C / 41-95°F
Dimensions	W-86 H-86 D-26mm W-3.4" H-3.4" D-1"

Features

- Surface
- Wireless Zigbee communication
- Battery powered
- 4 different functions
- grouping
- Party Mode (also called master function)
- Holiday mode (also called master function)
- Temporary overwriting
- Permanent Override
- 3 customizable temperature ranges including NSB
- Optional connection for external sensor or cylinder thermostat when configured as a timer
- Heating / cooling (also known as Master function) over the KL08RF terminal strip
- Factory heating / cooling program
- Memory Backup



SG888ZB Universal Gateway Zigbee Gateway

The core of the network, the ZigBee Gateway allows ZigBee devices in the home to communicate with each other and the outside world via the WiFi connection to the home's network. Paired with the Wyse.ly System, the ZigBee Gateway helps bring the Wyse.ly intelligence into the home.

Power Supply	5V, USB micro-A connector 120VAC 60Hz NEMA 1, Type A USB adapter included
Wireless Protocol	ZigBee HA 1.2; WiFi b,g,n
Operating Temp:	-10 to 50 °C / 14 to 122 °F
Dimensions	dia -89 H-56mm dia -3.5" H-2.2"

Features

- RJ45 Ethernet connection available
- Available in two colors: cc =
WH – White
BK – Black



ARV10RFM-3 TRV (Zigbee) Battery Operated Reduced Size

The ARV10RFM can replace most manually adjustable thermostat heads. The ARV10RFM needs with SALUS AS20RF room thermostat and the Zigbee coordinator AC10RF be used. The ARV10RFM can be optimally used in renovations or mixing heating with underfloor heating. (Together with AKL08)

Power Supply	2 x AA Batteries
Dimensions	W-52 H-85 D-52mm W-2" H-3.3" D-2"

Features

- Modulating
- Manual override
- LED indicator
- Zigbee 2.4Ghz
- M30



SX885ZBLG Smart Plug US Light Gray

A network controllable AC power switch in a standard (NEMA 5-15, Type B) grounded outlet that can help monitor energy usage. Will not block outlets in a standard single gang duplex socket.

Power Supply	120VAC, 60Hz
Wireless Standard	ZigBee HA 1.2
Operating temp:	0 – 40 °C, 32 – 104 °F
Dimensions	Not including plug: 54 x 37 x 38 mm 2.13" x 1.46" x 1.49" Including plug: 54 x 37 x 59 mm 2.13" x 1.46" x 2.32"

Features

- Two miniSmartPlugs can fit in a duplex outlet
- Switch resistive loads up to 15A
- Available in five colors: cc =
BB – Baby Blue
DG – Dark Gray
DR – Dusty Rose
LG – Light Gray
MG – Mint Green
- Turn-on Load Sensing
- Network accessible power reading
- Network accessible cumulative energy reading



AE10RF Repeater + USB plug

Increases the capacity of the devices in a pure battery powered system to another 32 units per repeater. Please note, should you want to connect more than 32 thermostats to the Internet you need another AC10RF and a SG888ZBWH Gateway in addition to the repeater.

WYSE.LY SYSTEM



AX10RF Zigbee Receiver SAL6DB1 24VAC

The Wyse.ly System receiver can be used as part of the IT600 system as an external heater circuit. The receiver can be used with the AKL08RF or ARV10RFM-3 or a combination of both.

Power Supply	24V
Switching voltage (max)	16(5) A
Input / Output	0-24V
Dimensions	W-145 H-100 D-35mm W-5.7" H-3.9" D-1.4"

Connections

N	Neutral
H	Phase
COM	Input
NO	Switched outlet

Features

- Zigbee 2.4Ghz
- Manual mode
- LED status indicator
- Can be used as boiler receiver* or it can be configured as an individual zone receiver.



SS881ZB Embedded Door Sensor

Detecting the open/close state of a door without disturbing the décor of the home is what the Embedded Door Sensor is all about. And it adjusts for gaps up to ¼" between the door and the frame. Adaptable and inconspicuous.

Power Supply	CR2 3V lithium battery
Wireless Protocol	ZigBee HA 1.2
Operating Temp:	0 – 40 °C, 32 – 104 °F
Dimensions	20 dia x 67 L mm 0.78" dia x 2.64" L"D

Features

- Adjustable to fit gaps up to ¼"
- Able to be flush mounted
- Tamper switch
- Can be mounted in the lintel or in the door if not a metal door



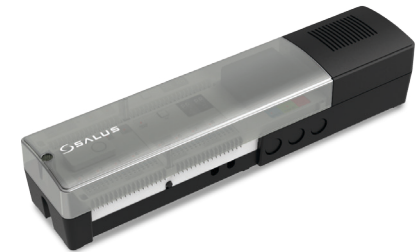
SS882ZB Window / Door Sensor

Magnetic door/window sensor allows wide gap before triggering to adjust to uneven surfaces between the frame and the door or window. Water resistant, so it can be used outdoors if mounted properly and temperatures are not extreme.

Power Supply	CR3032 3V lithium battery
Wireless Protocol	ZigBee HA 1.2
Operating temp	0 – 40 °C, 32 – 104 °F
Dimensions Sensor:	H-55x W-40x D-12mm H-2.2" W-1.6" D- 0.5"
Magnet:	H-55x W-16x D-12mm H- 2.2" W-0.6" D- 0.5"

Features

- Up to 1" magnet-sensor separation
- Thin profile
- Water resistant



AKL08RF ^{24V} 120VAC In and 24VAC output Wireless WC 8 Zones

The AKL08RF has 8 control zones. The pump control, boilers logic, a connection for Condensation Control and the C / O input for automatic switching from heating to cooling are standard.

The AKL08RF requires the SALUS AS20RF room thermostats and the Zigbee coordinator AE10RF to be used. The AE10RF coordinator is included.

The AKL08RF wiring centre can be used with other products in the Wyse.ly range, either individually or in combination. ARV10RF-3 thermostatic head and AX10RF receiver.

Power Supply:	120V
Switching voltage	5A
Output	24 Vac60Hz
Dimensions	W-353 H-85 D-65mm W-13.9 H-3.3" D-2.5"

Features

- 8 zones with 3 ports
- Potential-free terminals (pump and boiler)
- Works with NC or NO actuators
- Connectors
- LED status indicator
- Pull relief
- Connection for Condensation Control
- C / O input for heating / cooling signal
- With separate fuse
- Incl. coordinator AC10RF

WYSE.LY SYSTEM



A8RFA

Zigbee external antenna for AKL08RF

Increases RF signal within the home.



A30NC24

Normally Closed actuator

24v Thermal Actuator 30mm connection

24V

SALUS Electro Thermal Actuator T30NC24	
Power Supply:	NC - Normally Closed
Dimensions:	W-40 H-60 D-42 W-1.6" H-2.4" D1.6"
N:	24Vac
H:	24Vac

Features

- First Open Function
- Adaptive Stroke Length 4mm Max
- Low Watt consumption 2W
- Ease of Installation
- 100N force



A30NC24EW

24v Actuator M30 Normally Closed with end switch

Thermal Actuator for radiant heating and cooling systems. With additional wires(micro switch) for direct control of electrical loads..

24V

24V

Power Supply:	NC=Normally closed
Dimensions:	W-40mm H-70mm D-46mm W- 1.7" H-2.7" D-1.8"
N:	24Vac
H:	24Vac

Features

- Easy to install
- Adaptive stroke 4mm max
- Low consumption 2W
- 100N spring force
- High quality wax element
- 5 year warranty
- Easy closing and opening display
- Available in 24Vac
- M30 * 1.5 connecting thread
- 0.75mm² limit switch with 5A relay line



A30N024

Normally Open actuator

Thermal actuator for radiant heating and cooling systems.

24V

24V

Power Supply:	NO open= Electroless
Dimensions:	W-40 H-70 D-40mm W- 1.7" H-2.7" D-1.8"
N:	24Vac
H:	24Vac

Features

- Easy to install
- Adaptive stroke 4mm max
- Low consumption 2W
- 100N spring force
- High quality wax element
- 5 year warranty
- Easy closing and opening display
- Available in 24Vac
- M30 * 1.5 connecting thread



AH2430

24VAC Underfloor Hydronic Heating Balancing Actuator

Low Power Motorized Actuator with unique built-in Automatic Balancing Control for Under Floor Heating Systems to ensure each circuit is always correctly balanced.

24V

24V

Power Supply	NC = Normally Closed
Dimensions:	W-38mm x H-93mm x D-53mm W-1.5" x H-3.7" x D-2.1"
N:	24V AC/DC
H:	24V AC/DC

Features

ww

Wireless Underfloor/Radiator Systems

We provide a range of wireless RF room temperature controls (thermostats) to optimize the operating efficiency of your radiator and underfloor heating (UFH) system. Providing the flexibility to independently control each room or heating zone without the need for cabling.

The thermostats in this range control the UFH through a wiring centre using RF. The wiring centre has an in-built 120V/24V transformer for the connection of on/off 24V thermal actuators fitted to the respective heating loops on the manifold.

We also provide thermal actuators that fit directly onto any underfloor heating manifold. They open and close an underfloor heating zone in response to a signal from the room thermostat calling for heat. Thermal actuators can also open and close the valve by hand to allow for quick and easy commissioning and servicing.

Thermostats in this range control radiators fitted with the ARV10RFM thermostatic radiator valve using RF. Products in this range can be used for all underfloor systems, all radiator systems or a mixture of both.

WIRELESS RF SYSTEMS



AS20WRF/AS20BRF Zigbee Digital Control, Battery operated

Can be used as a stand alone thermostat, as part of a group of thermostats or as a timer. The AS20 room thermostat communicates with the thermostatic valve head, or the actuators via the coordinator. Therefore the AC10RF is necessary for the system. An additional probe connection available (optional sensor).

Power Supply	4 x AAA Alkalie Batteries
Radio-frequency	Zigbee 2.4 Ghz
Operating temp	5-35°C / 41-95°F
Dimensions	W-86 H-86 D-26mm W-3.4" H-3.4" D-1"

Features

- Surface
- Wireless Zigbee communication
- Battery powered
- 4 different functions
- grouping
- Party Mode (also called master function)
- Holiday mode (also called master function)
- Temporary overwriting
- Permanent Override
- 3 customizable temperature ranges including NSB
- Optional connection for external sensor or cylinder thermostat when configured as a timer
- Heating / cooling (also known as Master function) over the AKL08RF terminal strip
- Factory heating / cooling program
- Memory Backup



ARV10RFM-3 TRV (Zigbee) Battery Operated Reduced Size

The ARV10RFM can replace most manually adjustable thermostat heads. The ARV10RFM needs with SALUS AS20RF room thermostat and the Zigbee coordinator AC10RF be used. The ARV10RFM can be optimally used in renovations or mixing heating with underfloor heating. (Together with AKL08)

Power Supply	2 x AA Batteries
Dimensions	W-52 H-85 D-52mm W-2" H-3.3" D-2"

Features

- Modulating
- Manual override
- LED indicator
- Zigbee 2.4Ghz
- M30
- * 1,5
- Danfoss adapter



AC10RF Zigbee Co-ordinator + USB plug

SALUS Wyse.ly Zigbee systems require the Co ordinator for communication between individual components. The coordinator is supplied with its own adapter.

Power Supply	5V DC
--------------	-------

Features

- Accommodates up to 30 AS20RF thermostats
- Coordinate 150 ARV10RFM

* If more than 32 devices are in use, you will need a AE10RF (repeater) in addition.



AE10RF Repeater + USB plug

Increases the capacity of the devices in a pure battery powered system to another 32 units per repeater. Please note, should you want to connect more than 32 thermostats to the Internet so you need another AC10RF and a SG888ZBWH Gateway in addition to the repeater.



AX10RF Zigbee Receiver SAL6DB1 24VAC

The Wyse.ly System receiver can be used as part of the IT600 system as an external heater circuit. The receiver can be used with the AKL08RF or ARV10RFM-3 or a combination of both.

Power Supply	24V
Switching voltage (max)	16(5) A
Input / Output	0-24V
Dimensions	W-145 H-100 D-35mm W-5.7" H-3.9" D-1.4"

Connections

N	Neutral
H	Phase
COM	Input
NO	Switched outlet

Features

- Zigbee 2.4Ghz
- Manual mode
- LED status indicator
- Can be used as boiler receiver * or it can be configured as an individual zone receiver.

WIRELESS RF SYSTEMS



AKL08RF 120VAC In and 24VAC output Wireless WC 8 Zones

The AKL08 has 8 control zones, each with 3 ports for up to 3 heating per zone. The pump control, boilers logic, a connection for Condensation Control and the C / O input for automatic switching from heating to cooling are standard.

The AKL08 requires the SALUS AS20RF room thermostats and the Zigbee coordinator AC10RF to be used. The AC10RF coordinator is included.

The AKL08RF wiring centre can be used with other products in the Wysely range, either individually or in combination. ARV10RF-3 thermostatic head and AX10RF receiver.

Power Supply:	120V
Switching voltage	5A
Output	24Vac60Hz
Dimensions	W-353 H-85 D-65mm W-13.9 H-3.3" D-2.5"

Features

- 8 zones with 3 ports
- Potential-free terminals (pump and boiler)
- Works with NC or NO actuators
- Connectors
- LED status indicator
- Pull relief
- Connection for Condensation Control
- C / O input for heating / cooling signal
- With separate fuse
- Incl. coordinator AC10RF

A8RFA antenna



A30NC24 Normally Closed actuator

24V

24v Thermal Actuator 30mm connection

SALUS Electro Thermal Actuator T30NC24	
Power Supply:	NC - Normally Closed
Dimensions:	W-40 H-60 D-42 W-1.6" H-2.4" D1.6"
N:	24Vac
H:	24Vac

Features

- First Open Function
- Adaptive Stroke Length 4mm Max
- Low Watt consumption 2W
- Ease of Installation
- 100N force



A30NC24EW 24v Actuator M30 Normally Closed with end switch

24V

Thermal Actuator for radiant heating and cooling systems. With additional wires (micro switch) for direct control of electrical loads..

24V

Power Supply:	NC=Normally closed
Dimensions:	W-40mm H-70mm D-46mm W- 1.7" H-2.7" D-1.8"
N:	24Vac
H:	24Vac

Features

- Easy to install
- Adaptive stroke 4mm max
- Low consumption 2W
- 100N spring force
- High quality wax element
- 5 year warranty
- Easy closing and opening display
- Available in 24Vac
- M30 * 1.5 connecting thread
- 0.75mm² limit switch with 5A relay line



A30N024 Normally Open actuator

24V

Thermal actuator for radiant heating and cooling systems.

24V

Power Supply:	NO open= Electroless
Dimensions:	W-40 H-70 D-40mm W- 1.7" H-2.7" D-1.8"
N:	24Vac
H:	24Vac

Features

- Easy to install
- Adaptive stroke 4mm max
- Low consumption 2W
- 100N spring force
- High quality wax element
- 5 year warranty
- Easy closing and opening display
- Available in 24Vac
- M30 * 1.5 connecting thread



AH2430 24VAC Underfloor Hydronic Heating Balancing Actuator

24V

Low Power Motorized Actuator with unique built-in Automatic Balancing Control for Under Floor Heating Systems to ensure each circuit is always correctly balanced.

24V

Power Supply:	NC = Normally Closed
Dimensions:	W-38mm x H-93mm x D-53mm W-1.5" x H-3.7" x D-2.1"
N:	24V AC/DC
H:	24V AC/DC

Features

- Auto balancing with 12°C / 53.6°F
- Energy efficient
- Easy & quick to install
- Includes 2-piece pipe sensors
- Precision motorized actuator
- Ultra-low power 0.5W
- Fit & forget UFH balance control
- Fast valve opening & closing
- 5-year warranty
- M30 * 1.5mm connecting thread
- Patent pending

Wired Underfloor Systems

We provide a range of wired room temperature controls (thermostats) to optimize the operating efficiency of your radiator and underfloor heating (UFH) system. Providing the flexibility to independently control each room or heating zone.

The thermostats in this range control the UFH through a wiring centre using RF. The wiring centre has an in-built 120V/24V transformer for the connection of on/off 24V thermal actuators fitted to the respective heating loops on the manifold.

We also provide thermal actuators that fit directly onto any underfloor heating manifold. They open and close an underfloor heating zone in response to a signal from the room thermostat calling for heat. Thermal actuators can also open and close the valve by hand to allow for quick and easy commissioning and servicing.





Wired Systems

WIRED UNDERFLOOR SYSTEMS



AHTR5024
24VAC HTR Thermostat

The AHTR5024 is a stylish and accurate 24V digital display room thermostat. This attractive, modern thermostat has been specifically designed to be used for underfloor heating applications. With silent switching, Triac technology, pulse width modulation (PWM) and a large, easy to read digital display it is the perfect choice for a digital display, underfloor heating control solution.

Power Supply:	24 VAC
Output:	24 V: 1,8 W
Temp range:	5°C – 35°C / 41 - 95°F
Dimensions:	W-85 H-85 D-25mm W-3.3" H-3.3" D-1"

Switch	Characteristic	IN	OUT
VP	Valve protection	●○○	
PWM	Pulse Width Modulation	●●○	
⌚	NSB function (2 ° or 4 °)	2°C ●●○	4°C
CO	Heat /Cool	Activate ●○○	Deactivate



AHTR3024
24VAC HTR Thermostat

The AHTR3024 is a stylish and accurate 24V programmable digital display room thermostat. This attractive, modern thermostat has been specifically designed to be used for underfloor heating applications. With silent switching, Triac technology, pulse width modulation (PWM), a large, easy to read digital display and fully programmable for time and heat schedules, it is the perfect choice for a programmable, digital display, underfloor heating control solution.

Power Supply:	24 VAC, +-10%, 60 Hz
Output:	24 V: 1,8 W
Temp range:	5°C – 35°C / 41 - 95°F
Dimensions:	W-85 H-85 D-25mm W-3.3" H-3.3" D-1"



AHTR2024
24VAC HTR dial Thermostat (HTR20 Dial 24V)

The AHTR2024 is a stylish and accurate 24V dial room thermostat. This thermostat has been specifically designed to be used for underfloor heating applications. With silent switching, Triac technology and pulse width modulation (PWM) it is the perfect choice for a dial operated, underfloor heating control solution.

Power Supply:	24VAC, +-10 %, 60 Hz
Output:	24 V: 1,8 W
Temp range:	5°C – 35°C / 41 - 95°F
Dimensions:	W-85 H-85 D-25mm W-3.3" H-3.3" D-1"



ART20-24V
Digital 24V Underfloor Electronic Room

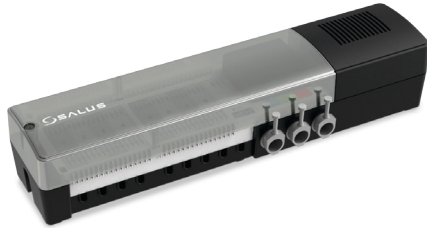
Easy to use electronic room thermostat with optional pulse width modulation, valve protection functions and connection for night setback temperature.

Power Supply:	24Vac
Output:	10 (2) A SPST
Temp range:	5°C – 35°C / 41 - 95°F
Dimensions:	W-80 H-80 D-33mm W-3.1" H-3.1" D-1.3"

Features

- Simple operation with backlit hand dial
- Clearly visible temperature scale
- Night setback (when used with ERT50)
- Valve / pump protection function
- Pulse width modulation (PWM)

WIRED UNDERFLOOR SYSTEMS



AKL08

120VAC In and 24VAC output Wiring Center with Night Set Back

The AKL08 is the perfect connection between Thermostats and Actuators. The AKL08 has Voltfree connection for Pump and Boiler integrated (optional).

Power Supply:	120V
Switching Voltage	5A
Output	24Vac 60Hz
Dimensions	W-353 H-85 D-65mm W-13.9 H-3.3" D-2.5"

Features

- Potential-free terminals (pump and boiler)
- Can be with NC or NO actuators used.
- connectors
- LED status indicator
- Pull relief
- delay
- External clock Contact
- NSB connection



A30NC24

Normally Closed actuator

24v Thermal Actuator 30mm connection

24V

SALUS Electro Thermal Actuator T30NC24

Power Supply:	NC - Normally Closed
Dimensions:	W-40 x H-60 x D-42mm W-1.6" H-2.4" D1.6"
N:	24Vac
H:	24Vac

Features

- First Open Function
- Adaptive Stroke Length 4mm Max
- Low Watt consumption 2W
- Ease of Installation
- 100N force



A30NC24EW

24v Actuator M30 Normally Closed with end switch

Thermal Actuator for radiant heating and cooling systems. With additional wires(micro switch) for direct control of electrical loads..

24V

Power Supply:	NC=Normally closed
Dimensions:	W-40 x H-70 x D-46mm W- 1.7" H-2.7" D-1.8"
N:	24Vac
H:	24Vac

Features

- Easy to install
- Adaptive stroke 4mm max
- Low consumption 2W
- 100N spring force
- High quality wax element
- 5 year warranty
- Easy closing and opening display
- Available in 24Vac
- M30 * 1.5 connecting thread
- 0.75mm² limit switch with 5A relay line



A30N024

Normally Open actuator

Thermal actuator for radiant heating and cooling systems.

24V

24V

Power Supply:	NO open= Electroless
Dimensions:	W-40 x H-70 x D-40mm W- 1.7" H-2.7" D-1.8"
N:	24Vac
H:	24Vac

Features

- Easy to install
- Adaptive stroke 4mm max
- Low consumption 2W
- 100N spring force
- High quality wax element
- 5 year warranty
- Easy closing and opening display
- Available in 24Vac
- M30 * 1.5 connecting thread



AH2430

24VAC Underfloor Hydronic Heating Balancing Actuator

Low Power Motorized Actuator with unique built-in Automatic Balancing Control for Under Floor Heating Systems to ensure each circuit is always correctly balanced.

24V

24V

Power Supply:	NC = Normally Closed
Dimensions:	W-38 x H-93 x D-53mm W-1.5" x H-3.7" x D-2.1"
N:	24V AC/DC
H:	24V AC/DC

Features

- Auto balancing with 12°C / 53.6°F
- Energy efficient
- Easy & quick to install
- Includes 2-piece pipe sensors
- Precision motorized actuator
- Ultra-low power 0.5W
- Fit & forget UFH balance control
- Fast valve opening & closing
- 5-year warranty
- M30 * 1.5mm connecting thread
- Patent pending



Manifold

AS20WRF



ARV10RFM-3



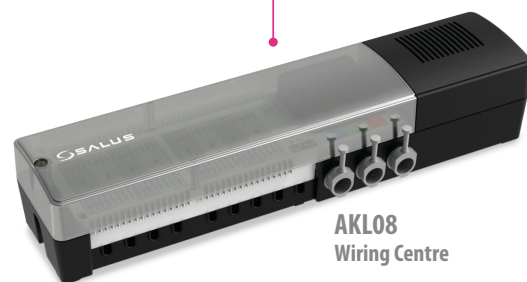
AS20WRF



ARV10RFM-3



T30NC24
Thermal Actuator



AKL08
Wiring Centre



AHTR3024

SALUS NORTH AMERICA,
850 MAIN STREET, REDWOOD CITY, CA 94063

EMAIL: SALES@SALUSNA.COM
TEL: 1-650-360-1725

www.salusna.com



SALUS Controls is a member of Computime Group

To maintain a policy of continuous development of products, to SALUS Controls plc reserves the right to change specification, design and materials of the products that are listed in this brochure, without prior notice.

Edition: April 2017