

T-10-VB & T-15-VB SERVICE SINK FITTING

Stern-Williams Heavy Duty Service Sink Faucets are designed to last for the life of the plumbing system. With Integral vacuum breaker and backflow check valves this faucet helps to assure the safety of the drinking water system. Adjustable inlets assists in the installation if the supply piping is not on perfect 8" centers.

T-10-VB features a Rough Chrome Plating
 T-15-VB features a Polished Chrome Plating

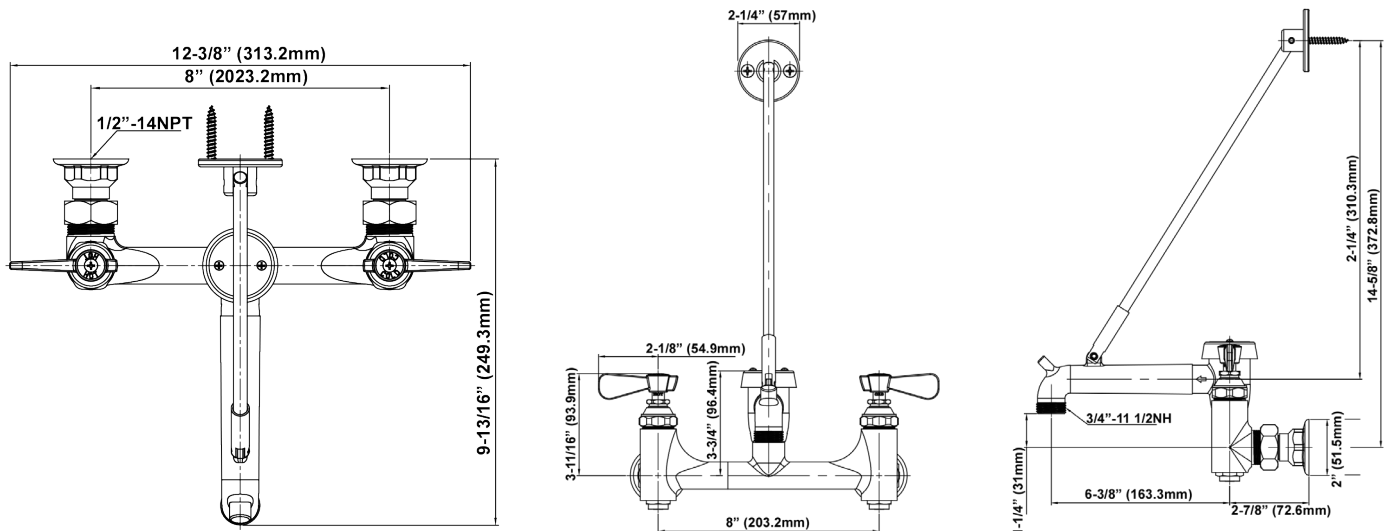


Shown: T-10-VB

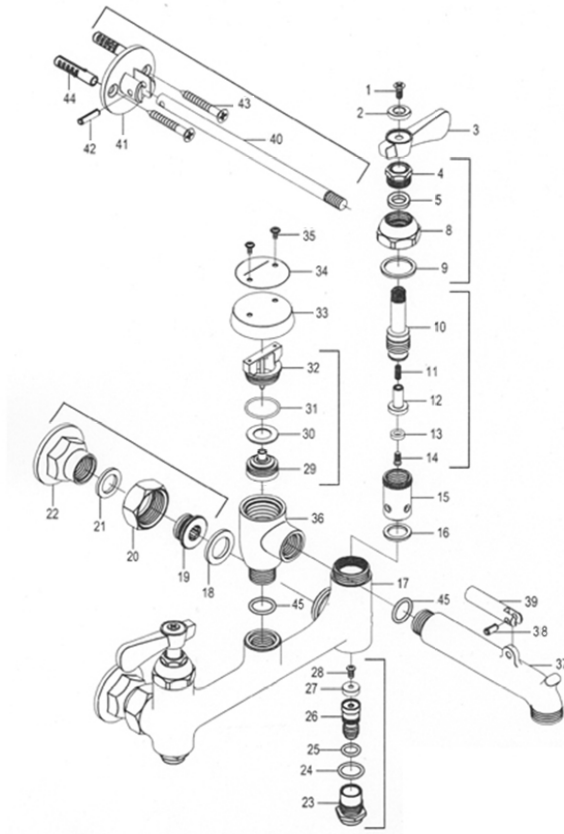
FEATURES

- Flow rate is 2.5 gpm at 60 psi
- Vacuum breaker approved to ASSE 1001
- Integral backflow check valves
- 3/4" hose thread on spout with bucket hooks 8" on center
- Integral stops
- Lever handles
- Adjustable centers on inlet
- Exceeds requirements of ASSE A112. 18.1-201/CSA B125.1 Plumbing Supply Fittings

DIMENSIONS



T-10-VB & T-15-VB SERVICE SINK FITTING



REPLACEMENT PARTS

Part #	QTY	Description
12-1	2	Brass Handle Screw
12-2	2	POM Button (Specify: Cold-Blue/Hot-Red)
12-3	2	Zinc Lever Handle
12-4	2	Brass Packing Nut (Part 4 includes 5, 8 & 9)
*12-5	2	NSF Rubber Washer
*12-8	2	Brass Bonnet Nut
*12-9	2	NSF Rubber Washer
12-10	2	Brass Stem (Specify: Cold-LH/Hot-RH) (Part 10 includes 11, 12, 13, 14, 15 & 16)
*12-11	2	Stainless Steel Spring
*12-12	2	Brass Seat
*12-13	2	NSF Rubber Washer
*12-14	2	Brass Screw
*12-15	2	Brass Block (Specify: Cold-LH/Hot-RH)
*12-16	2	NSF Rubber Washer
*12-17	1	Brass Faucet Body
*12-18	2	Rubber Washer
12-19	2	Brass Insert (Part 19 includes 18, 20, 21 & 22)
*12-20	2	Nylon Ring
*12-21	2	Brass Hex Nut
*12-22	2	Brass Offset Flange
12-23	2	Brass Stop Block (Part 23 includes 24, 25, 26, 27 & 28)
*12-24	2	Rubber O-Ring

Part #	QTY	Description
*12-25	2	Rubber O-Ring
*12-26	2	Brass Stem
*12-27	2	Rubber Washer
*12-28	2	Brass Screw
12-29	1	PP Piston (Float) (Part 29 includes 31, 32 & 33)
*12-30	1	Silicon Disk Seal
*12-31	1	Rubber O-Ring
*12-32	1	Plastic Insert
12-33	1	Brass Cover Plate
12-34	1	Aluminum Name Plate
12-35	2	Stainless Steel Screw
*12-36	1	Brass Vacuum Breaker Body
*12-37	2	Brass Spout
*12-38	1	Steel Spring Pin
*12-39	1	Brass Connector
*12-40	1	Brass Wall Brace (Part 42 includes 43 & 44)
12-41	1	Zinc Wall Flange
*12-42	1	Stainless Steel Spring Pin
*12-43	1	Stainless Steel Wall Screw
12-44	2	Plastic Anchor
12-45	2	Rubber O-Ring

*Not available as individual replacement part