

# STONEWOOD

BATH CABINETRY





STONEWOOD  
**FUTURE**  
FORESTS

## ONE TREE PLANTED FOR EVERY VANITY SOLD

We have partnered with WEARTH, a family of farmers, as a Forest Farmer Partner.

Brad and Rebecca Rabiey, third generation farmers and founders of WEARTH, were first seen on Dragons' Den in 2012 where they decided to partner with Arlene Dickinson and Bruce Croxon.

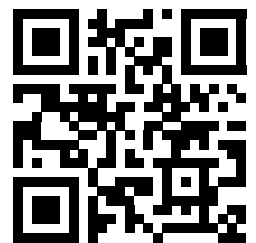
Each tree will be planted in Canadian soil, across the country.

In addition to your physical tree being planted, you will have the opportunity to plant a tree in our virtual forest!

More details at:

[www.futureforests.stonewoodbath.com](http://www.futureforests.stonewoodbath.com)

[www.createyourforest.ca/visit/stonewoodbath](http://www.createyourforest.ca/visit/stonewoodbath)



Scan me

# OUR GOAL

Stonewood Bath Cabinetry's goal is to provide beautiful bathroom furniture products to our customers. We continue to be an industry leader, always learning and improving to serve you better. Delivering exceptional service and happiness to our customers is our top priority.

Our program allows customers to mix and match products, styles and colours to give them the bathroom vanity of their dreams.



## QUICK TURNAROUND

Once your order has been placed, expect to receive your unique vanity in two - three weeks. Allow five weeks for Five Shades of Grey Premium Painted Collection.

## HUNDREDS OF COLOUR COMBINATIONS

Find the perfect match to suit your style!

## PROUDLY CANADIAN

Our facility is located in Barrie, Ontario. Assembly and quality inspections take place here.



### ON THE COVER:

Vanity: 48" Brown Oak (Bellrose)

Vanity top: Suede quartz

Hardware: Brushed Nickel Modern knobs

Mirrors: 26" Brown Oak



48" Desert Oak (Bellrose) vanity with Fantasy quartz top and Brushed Nickel bar handles

# SUPERIOR QUALITY

Stonewood Bath Cabinetry prides itself in providing superior construction integrity, the following features come standard on our vanities:

- Solid hardwood face-frame, back-frame and furniture kick
- Hardwood dovetail drawer boxes
- 5/8" plywood interior/end gables, dust kick and floor
- Full-extension, adjustable soft-closing hardware
- Inserted door and drawer bumpers

---

We stand behind the quality of our products and offer warranties on all our vanities, quartz tops, accessories and cabinet hardware.



*Further details can be found at:*  
[www.stonewoodbath.com/warranty](http://www.stonewoodbath.com/warranty)

Navy Grey (Bellrose) with Fantasy quartz top and Brushed Nickel Modern knobs



# CABINETY OPTIONS

## WIRE-BRUSHED OAK PREMIUM COLLECTION



**BROWN OAK** *(Bellrose)*



**DESERT OAK** *(Bellrose)*



**URBAN OAK** *(Bellrose)*



**WEATHERED OAK** *(Bellrose)*

## FIVE SHADES OF GREY PREMIUM PAINTED COLLECTION



**GRAPHITE** *(Bellrose)*



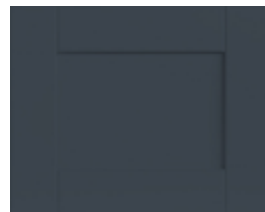
**GRAPHITE** *(V-Groove Shaker)*



**GRAPHITE** *(Raised Panel)*



**NAVY GREY** *(Bellrose)*



**NAVY GREY** *(V-Groove Shaker)*



**NAVY GREY** *(Raised Panel)*



**SILVER** *(Bellrose)*



**SILVER** *(V-Groove Shaker)*



**SILVER** *(Raised Panel)*



**SMOKE** *(Bellrose)*



**SMOKE** *(V-Groove Shaker)*



**SMOKE** *(Raised Panel)*



**TITANIUM** *(Bellrose)*



**TITANIUM** *(V-Groove Shaker)*



**TITANIUM** *(Raised Panel)*

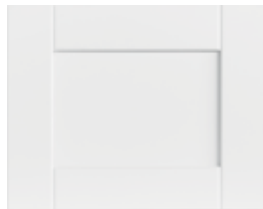


## PAINTED CLASSIC COLLECTION

## STAINED CLASSIC COLLECTION



**WHITE** (*Bellrose*)



**WHITE** (*V-Groove Shaker*)



**BISCOTTI** (*Raised Panel*)



**CHESTNUT** (*Shaker*)



**DRIFTWOOD** (*Bellrose*)



**ESPRESSO** (*Shaker*)



**LAKEWOOD** (*Bellrose*)

### Five-piece door styles explained:

#### BELLROSE

Recessed centre panel with a soft, linear profile.

#### SHAKER

A flat centre panel and square edges. Minimal detailing and profile.

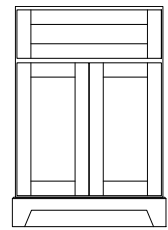
#### V-GROOVE SHAKER

Shaker-style with an added groove at the joints.

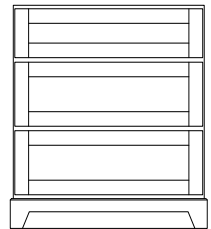
#### RAISED PANEL

Slightly decorative with a raised centre panel.

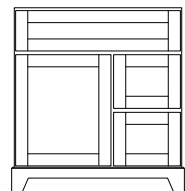
## VANITY STYLES



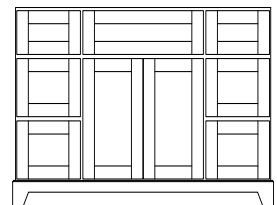
**24" VANITY**



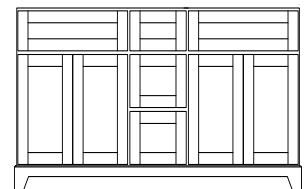
**30"/36" VANITY†  
(DRESSER STYLE)**



**30"/36" VANITY  
(LEFT OR RIGHT  
DRAWER BANK)**



**42"/48"/54"/60" VANITY  
(SINGLE BOWL)**



**60"/72" VANITY  
(DOUBLE BOWL)**

†30"/36" Dresser Style vanities are available in all finishes except Chestnut (Shaker) and Espresso (Shaker).

# WIRE-BRUSHED OAK

## PREMIUM COLLECTION

Our Wire-Brushed Oak Premium Collection is stunning! We enhance the original wood grain of oak by wire-brushing the surface to expose its natural characteristics and beauty. Multiple coats of stain and glaze further enhance the natural deep oak grain. The final product is a premium wood finish that will complement any décor.

### Collection Options:



**BROWN OAK** (Bellrose)  
Rich and refined. Brown Oak's caramel undertones bring warmth and character into any bathroom.



**DESERT OAK** (Bellrose)  
Light, rustic and earthy. Desert Oak has compelling wood grains which offer a natural, organic aesthetic.



**URBAN OAK** (Bellrose)  
Dark and rich. Urban Oak provides dark wood grains with an elegant finish.



**WEATHERED OAK** (Bellrose)  
Rustic and warm. Weathered Oak offers a similar feel to raw wood and complements traditional décor.

**NOTE:** Due to wood's natural uniqueness and because each Stonewood product is finished by hand, there may be diversity in colour, tone and grain pattern. The differences will vary from these pictures, in-store display samples and from product to product.







Brown Oak (Bellrose) with Suede quartz top

1. **24" VANITY** Shown in Weathered Oak (Bellrose) with One-Piece Porcelain Top with integrated sink and Brushed Nickel Modern knobs.
2. **30"/36" RIGHT OR LEFT DRAWER VANITY** Shown in 36" Urban Oak (Bellrose) right drawer with Carrera quartz top and Chrome Slim handles.
3. **30"/36" DRESSER STYLE VANITY** Shown in 36" Desert Oak (Bellrose) with Pewter quartz top and Black Long Curved handles.
4. **42"/48"/60" SINGLE BOWL VANITY** Shown in 48" Brown Oak (Bellrose) with Suede quartz top and Brushed Nickel Modern knobs.
5. **60"/72" DOUBLE BOWL VANITY** Shown in 72" Urban Oak (Bellrose) with Dover White quartz top, Brushed Nickel Bevelled handles and two 26" Urban Oak mirrors.

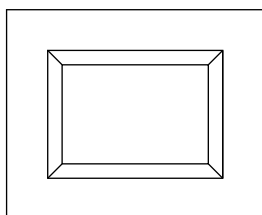
# FIVE SHADES OF GREY

## PREMIUM PAINTED COLLECTION

Add an element of noteworthy style to your bathroom by having your vanity professionally painted in one of our trendsetting greys!

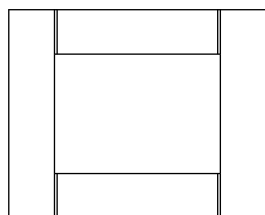
**Note:** Allow up to five weeks for delivery of Five Shades of Grey Premium Painted Collection vanities.

### Available five-piece door styles:



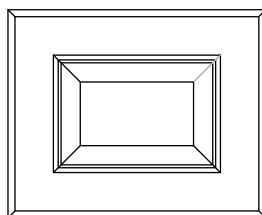
#### BELLROSE

Recessed centre panel with a soft, linear profile.



#### V-GROOVE SHAKER

Shaker-style with an added groove at the joints.



#### RAISED PANEL

A modern raised panel door style with the centre panel slightly raised.

### Colour Options:



#### GRAPHITE

Similar to Beauti-Tone Warehouse District F045-4 and Benjamin Moore Overcoat CC-544



#### NAVY GREY

Similar to Beauti-Tone Rooftop at Midnight F034-3 and Benjamin Moore Hale Navy HC-154



#### SILVER

Similar to Beauti-Tone Class Act D40-4-1592-4 and Benjamin Moore Vintage Pewter CSP-110



#### SMOKE

Similar to Beauti-Tone Roller Skates ST016 and Benjamin Moore Metropolitan AF-690



#### TITANIUM

Similar to Beauti-Tone Mink About It RI63-4 and Benjamin Moore Metropolitan CC-546





Graphite (V-Groove Shaker) with Carrera quartz top



1. **24" VANITY** Shown in Smoke (V-Groove Shaker) with One-Piece Porcelain top with integrated sink and Brushed Nickel Modern knobs.
2. **30"/36" RIGHT OR LEFT DRAWER VANITY** Shown in 36" Silver (Bellrose) left drawer with Pewter quartz top and Black Curved handles.
3. **30"/36" DRESSER STYLE VANITY** Shown in 30" Titanium (Raised Panel) with Dover White quartz top and Brushed Nickel Long Curved handles.
4. **42"/48"/54"/60" SINGLE BOWL VANITY** Shown in 48" Navy Grey (Bellrose) with Fantasy quartz top and Brushed Nickel Modern knobs.
5. **60"/72" DOUBLE BOWL VANITY** Shown in 72" Graphite (V-Groove Shaker) with Carrera quartz top, Chrome Bar handles and two 26" Graphite mirrors.

**NOTE:** Each Stonewood product is finished by hand. There may be diversity in colour and tone. The differences will vary from these pictures, in-store display samples and from product to product.

# PAINTED

## CLASSIC COLLECTION

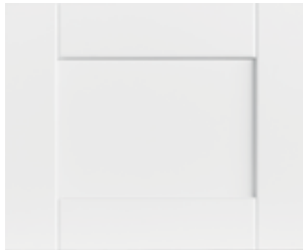
For a clean look, our Painted Classic Collection offers three combinations of door styles and finishes. Our professional painters take care in ensuring your vanity has a smooth, uniform finish by applying multiple coats of paint and sanding between each coat. This technique results in a beautiful, satin-like finish; a standout piece in any bathroom.

### Collection Options:



#### **WHITE (Bellrose)**

Our five-piece Bellrose style door painted in a clean, crisp white. Similar to Beauti-Tone *Here Comes The Bride* WB001-0 and Benjamin Moore *Chantilly Lace* OC-65.



#### **WHITE (V-Groove Shaker)**

Our five-piece shaker-style door with an added groove at the joints. Painted in a clean, crisp white. Similar to Beauti-Tone *Here Comes The Bride* WB001-0 and Benjamin Moore *Chantilly Lace* OC-65.



#### **BISCOTTI (Raised Panel)**

A modern raised panel door style with the centre panel slightly raised. Painted in a soft off-white. Similar to Beauti-Tone *Summer Whites* WB034-0 and Benjamin Moore *Acadia White* OC-38.



**NOTE:** Each Stonewood product is finished by hand. There may be diversity in colour and tone. The differences will vary from these pictures, in-store display samples and from product to product.



White (Bellrose) with Moonscape quartz top

1. **24" VANITY** Shown in Biscotti (*Raised Panel*) with One-Piece Porcelain top with integrated sink and Oil Rubbed Bronze Modern knobs.
2. **30"/36" RIGHT OR LEFT DRAWER VANITY** Shown in 36" White (*Bellrose*) right drawer with Pewter quartz top and Chrome Curved handles.
3. **30"/36" DRESSER STYLE VANITY** Shown in 30" White (*Shaker*) with Fuzion quartz top and Chrome Long Curved handles.
4. **42"/48"/54"/60" SINGLE BOWL VANITY** Shown in 48" White (*Bellrose*) with Seaside quartz top and Black Modern knobs.
5. **60"/72" DOUBLE BOWL VANITY** Shown in 72" White Bellrose with Carrera quartz top, Chrome Bar handles and two 26" White mirrors.

# STAINED

## CLASSIC COLLECTION

Our Stained Classic Collection features an assortment of popular wood stains and glazes, offered in a variety of door styles. Multiple coats of stain and glaze are applied by hand to achieve a deep, rich finish.

*30"/36" Dresser Style vanities are available in all finishes except Chestnut (Shaker) and Espresso (Shaker).*

### Collection Options:



**CHESTNUT** (Shaker)  
Chestnut brings an elegant, traditional look to your bathroom space. Seen here in Shaker door style, it has a slightly modern feel.



**DRIFTWOOD** (Bellrose)  
Light and neutral. Driftwood is the perfect canvas to build upon, allowing you to pair it with almost any colour.



**ESPRESSO** (Shaker)  
Deep, rich, dark brown. Espresso lends itself to warm, cozy and slightly modern designs. A tasteful, smart look to any bathroom.



**LAKEWOOD** (Bellrose)  
Modern, charming and satiny. Lakewood offers hints of black, green and dark grey. A chic and sophisticated centrepiece to your bathroom.

**NOTE:** Due to wood's natural uniqueness, and because each Stonewood product is finished by hand, there may be diversity in colour, tone and grain pattern. The differences will vary from these pictures, in-store display samples and from product to product.







Lakewood (*Bellrose*) with Monaco quartz top

1. **24" VANITY** Shown in Espresso (*Shaker*) with One-Piece Porcelain top with integrated sink and Brushed Nickel Curved handles.
2. **30"/36" RIGHT OR LEFT DRAWER VANITY** Shown in 36" Lakewood (*Bellrose*) left drawer with Carrera quartz top and Brushed Nickel Wide handles.
3. **30"/36" DRESSER STYLE VANITY** Shown in 36" Driftwood (*Bellrose*) with Pewter quartz top and Black Long Curved handles.
4. **42"/48"/54"/60" SINGLE BOWL VANITY** Shown in 48" Chestnut (*Shaker*) with Dover quartz top and Chrome Modern knobs.
5. **60"/72" DOUBLE BOWL VANITY** Shown in 72" Driftwood (*Bellrose*) with Luna quartz top, Black Bar handles and two 26" Driftwood mirrors.

# LINEN TOWER

## INTEGRATION

Linen towers have a matching, finished interior. The standard option comes with open upper shelves or a door with left or right hinges that can be added at no additional charge.

### Custom Integration

No matter what your preference, our linen tower will complete the look of your bathroom. A linen tower can be installed in three different ways:

(1) Free standing – Linen towers are finished on all three sides making it a beautiful, stand-alone piece.

(2) Tight against a wall – The crown molding should be cut to have the linen tower crown and kick sit flush against the wall. The supplied filler strips then bridge the gap between the cabinet and wall to complete the installation. *NOTE: This cut should be performed on-site by a skilled trades professional.*

(3) Integrated with your vanity – We factory cut your vanity top and side splash to ensure a snug fit between the linen tower and vanity cabinet. The linen tower decorative kick is also designed to integrate seamlessly behind the vanity decorative kick. Finally, a  $\frac{3}{4}$ " colour-matched filler strip closes the gap between the cabinets to complete the install.

When purchasing a linen tower, please consult with a sales associate and choose from the linen tower layout options. We will prepare the linen tower(s) according to your layout, facilitating the installation.

**NOTE:** Linen towers cannot be integrated with 24" vanities. If integrating linen towers with a 72" vanity, we recommend using two 19 $\frac{1}{2}$ " mirrors. The width of the crown molding on the linen towers will prevent 26" mirrors from being centred over the sinks.



▲ Decorative kick integration



▲ Side splash is precut for Linen Tower integration





48" White (Bellrose) vanity with Carrera quartz top, linen tower, 26" mirror and bath storage cabinet

# HARDWARE

Stonewood Bath Cabinetry offers a wide range of handles and knobs to accentuate your bathroom furniture. Choose “no hardware” on the order form to customize the look even further with your own hardware.

## BAR (96 mm)



BLACK



BRUSHED NICKEL



CHROME



OIL RUBBED BRONZE

## BEVELLED (96 mm)



BLACK



BRUSHED NICKEL



CHROME



OIL RUBBED BRONZE

## CURVED (96 mm)



BLACK



BRUSHED NICKEL



CHROME



OIL RUBBED BRONZE

## SLIM (96 mm)



BLACK



BRUSHED NICKEL



CHROME



OIL RUBBED BRONZE

## WIDE (96 mm)



BLACK



BRUSHED NICKEL

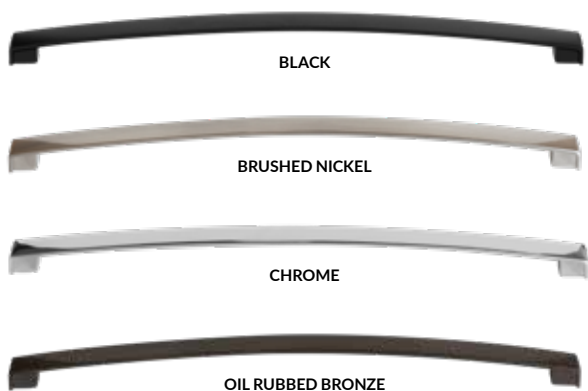


CHROME



OIL RUBBED BRONZE

## LONG CURVED HANDLES FOR DRESSER STYLE VANITIES (320 mm)



## CLASSIC



BLACK



BRUSHED NICKEL



CHROME



OIL RUBBED BRONZE

## MODERN



BLACK



BRUSHED NICKEL



CHROME



OIL RUBBED BRONZE



Hardware can transform your vanity!

**Left:**  
36" Silver (Bellrose) Left Drawer vanity with Pewter quartz top and Black Curved Handles.

**Right:**  
36" Silver (Bellrose) Left Drawer vanity with Carrara quartz top and Brushed Nickel Bevelled handles.

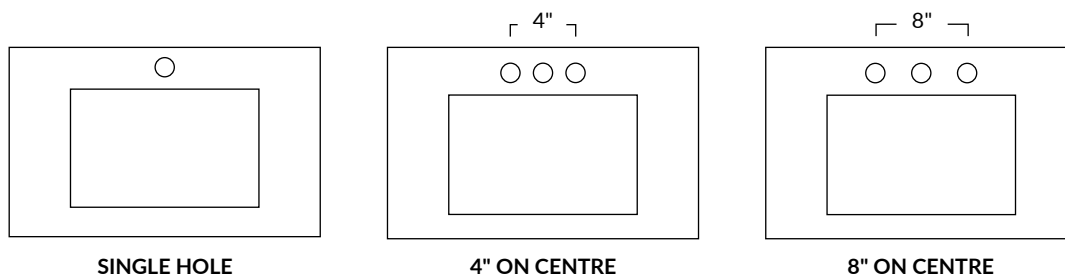
# QUARTZ TOPS

## CREATE THE LOOK YOU LOVE!

Stonewood Bath Cabinetry strives to give our customers the luxury of choice. This continues with our 1¼" thick quartz vanity tops. We offer 16 colour options, two sink styles (available in white or linen) and choice of single, 4" or 8" on centre faucet hole drill patterns. All vanity tops include undermount sinks that are factory installed using industrial silicon. They also come standard with a matching 4" high backsplash and required side splashes based on the selected layout.



## FAUCET HOLE DRILL PATTERN OPTIONS



**NOTE:** Faucet holes are 1⅜" diameter.

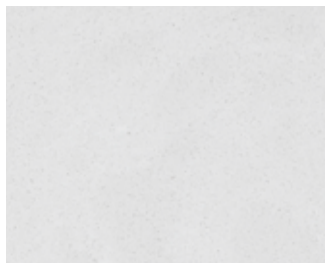


## Colour Options:

---



CARRERA



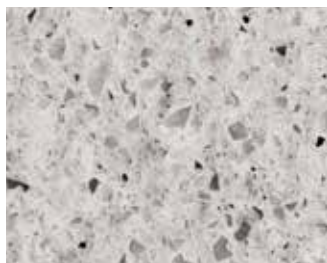
DOVER WHITE



FANTASY



FROSTY GREY



FUZION



GLACIER



LUNA



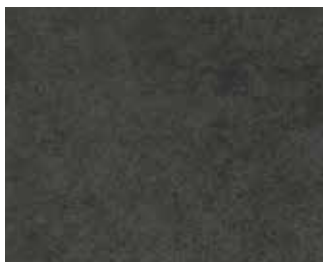
MONACO



MOONSCAPE



NIAGARA MIST



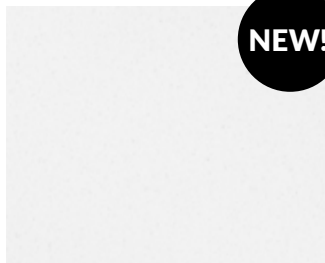
PEWTER



SEASIDE



SIENNA



SUEDE



TERRA NOVA



WHITE SAND

## TECHNICAL DETAILS

Our non-porous, 92% natural quartz stone is engineered for consistent colour. It is heat, scratch and stain resistant. No sealing is required, making it maintenance free. Quartz vanity tops are available in standard widths to pair with our vanities. For an additional charge, custom cuts are available from the standard widths. Please consult with an in-store sales representative for assistance with the custom-cut top measurements.

**NOTE:** The above images are representations of our quartz. There may be variances in colour and pattern between the pictures, in-store samples and your vanity.

# UNDERMOUNT SINKS

by akwa

## CLASSIC

Distinguished by a deep elongated basin, the Classic sink is a traditional style. The wide-shaped, sweeping sides rest under the counter. Available in White or Linen\*.



CLASSIC WHITE



CLASSIC LINEN

## MANHATTAN

With unique vertical sides, a low sloping bottom and a centre drain location, the Manhattan sink brings a more modern look to any vanity combination. Available in White or Linen\*.



MANHATTAN WHITE



MANHATTAN LINEN

*\*The colour Linen is comparable to Kohler "Biscuit", Eljer "Silk", Toto "Sedona Beige" and American Standard "Linen".*

## 24" VANITY TOP

This white porcelain top comes with an integrated rectangular sink and a sleek, modern profile. It features an overflow drain and non-porous glazing that prevents discolouration and fading. The wide, flat border around the basin provides practical storage.

Only available with single hole faucet drill pattern.

Dimensions: 24¼" x 18½"



# ACCESSORIES

Complete the look of your new bathroom with our mirrors, bath storage cabinets and medicine cabinets. All are available in our entire colour range!



## MIRRORS

Complement your new vanity with a matching, wood-framed mirror. All mirrors are 35½" in height.



## BATH STORAGE CABINETS

Add a matching bath storage cabinet over your toilet for even more storage. Includes one adjustable interior wooden shelf.



## 30" MEDICINE CABINETS

30" medicine cabinets come right hinged with two adjustable glass shelves. They are designed to be mounted flush or recessed. To facilitate recessed installation we cut the back of the crown molding.

**NOTE:** Wall opening requirement for 30" recessed medicine cabinet is 35" x 25½".

## 48" MEDICINE CABINETS

48" medicine cabinets are designed to be mounted flush on a wall. They have two finished interior cabinets, each with three adjustable glass shelves.

### Add an extra source of light!

48" medicine cabinets are available with three high efficiency, 3W LED flush mount lights for a secondary source of light. The lights are a soft white (3,000 K).

**NOTE:** 48" medicine cabinets do not fit between two linen towers on E layouts



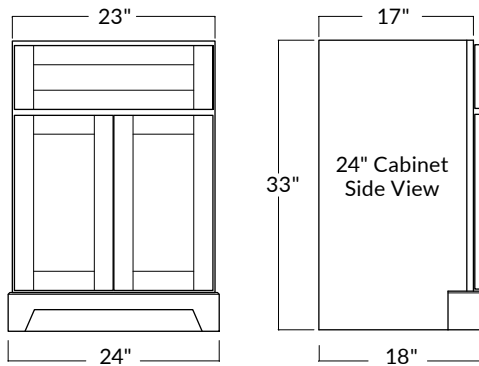
# DIMENSIONS

The following measurements are provided to help with the ordering process.

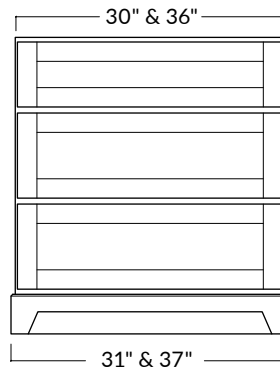
Please allow for 1/8" (+/-) variance.

## VANITIES

### 24" SINGLE SINK

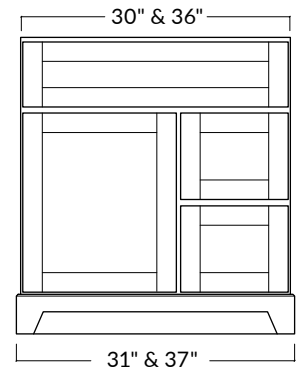


### 30" OR 36" SINGLE SINK DRESSER STYLE VANITY

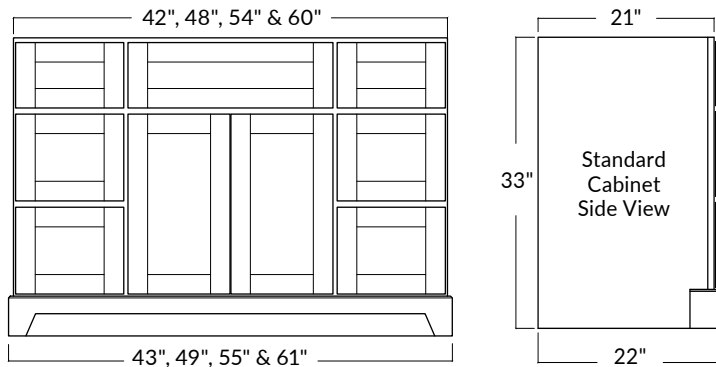


Upper drawer depth is 14" with  
6" (w) x 9 1/4" (d) notch in centre to  
accommodate plumbing.

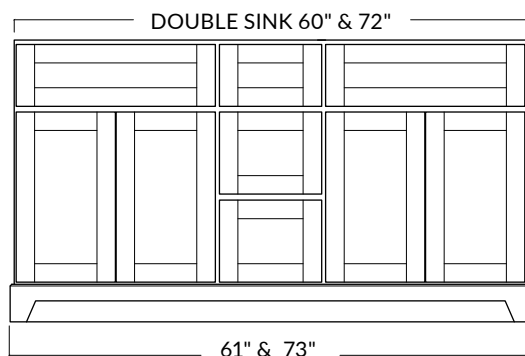
### 30" OR 36" SINGLE SINK (DRAWERS AVAILABLE ON LEFT OR RIGHT)



### 42", 48", 54" & 60" SINGLE SINK

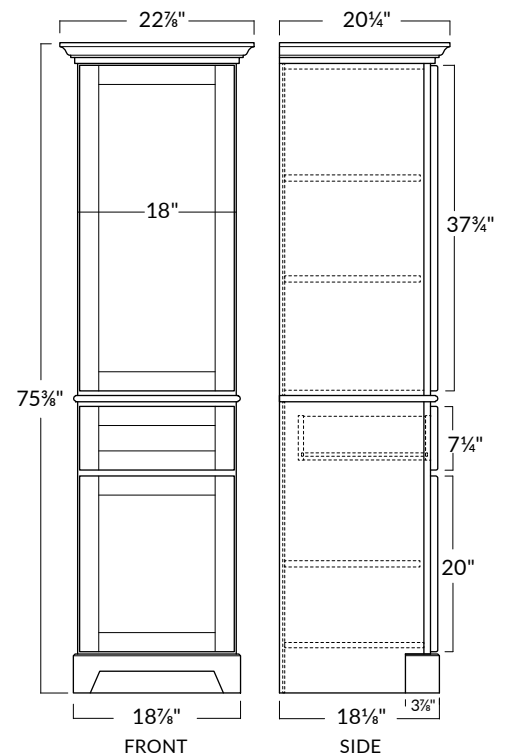


### 60" OR 72" DOUBLE SINK



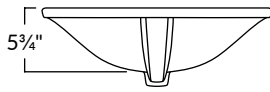
## LINEN TOWER

Choose open shelves or an upper door  
with right or left hinge.

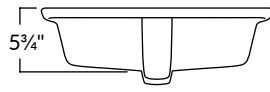


## UNDERMOUNT SINKS

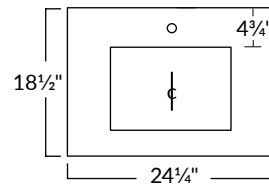
CLASSIC SINK PROFILE



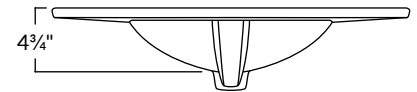
MANHATTAN SINK PROFILE



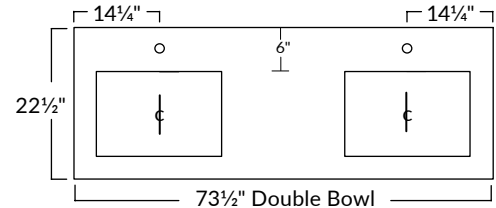
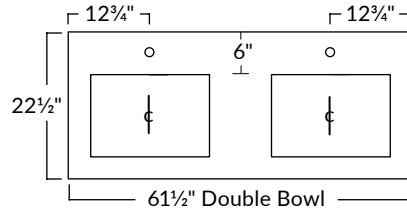
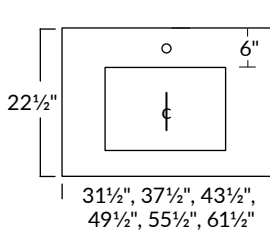
## 24" PORCELAIN TOP



BASIN PROFILE

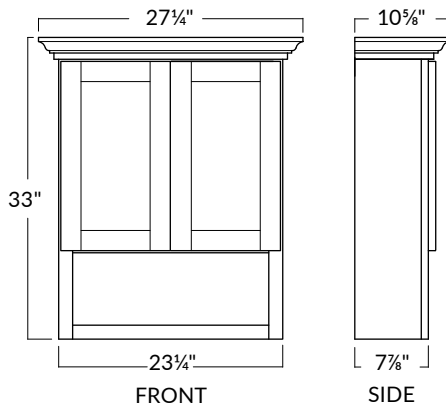


**SINK POSITIONING WITH STONE TOPS** (Note: The stone top opening for both the Classic and Manhattan Rectangular sink is 17" x 11 5/8")

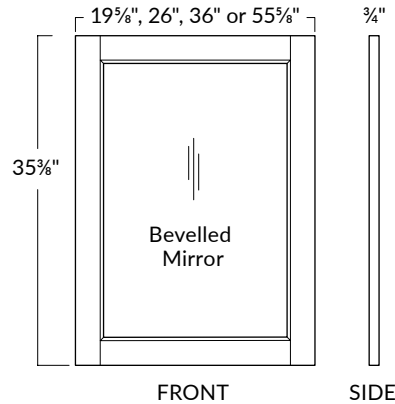


## ACCESSORIES

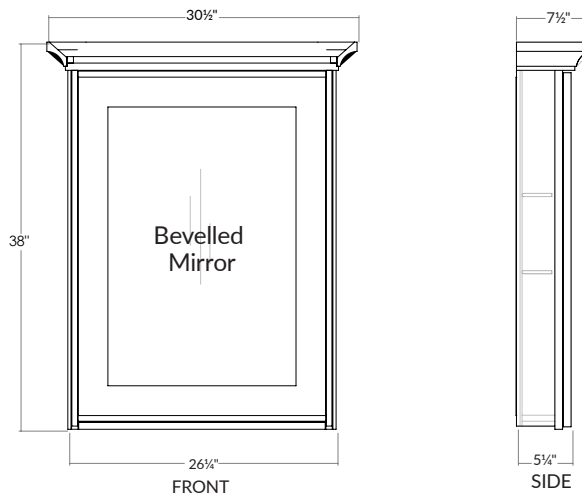
BATH STORAGE CABINET



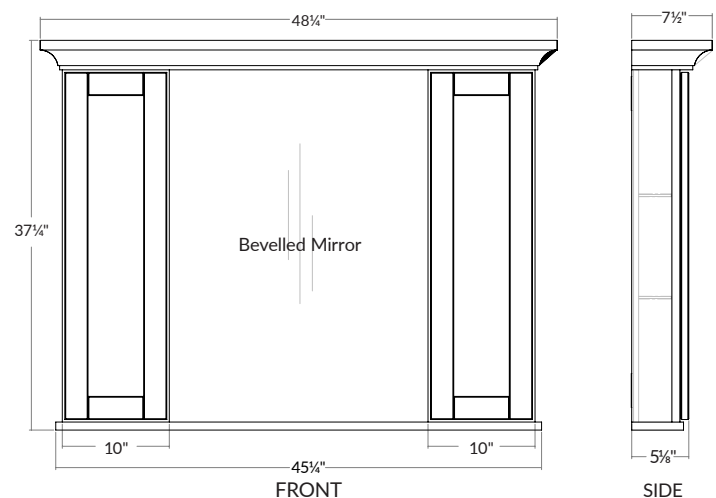
MIRRORS



30" MEDICINE CABINET (FLUSHED OR RECESSED)



48" MEDICINE CABINET



# PROJECT PLANNING

## & INSTALLATION TIPS

We recommend having a **skilled trades professional** install your new bathroom furniture. Please refer to the planning tips below prior to installation.

1. Accurately measure your bathroom. Make note of plumbing locations, electrical outlets, light fixtures and available wall depth at a doorway.
2. Draw your bathroom to scale using provided dimensions (pg. 24-25) and layout options (pg. 27). **NOTE:** The stone vanity tops are 1½" wider than the width (¾" per side overhang).
3. Select your cabinet finish, hardware, stone vanity top, faucet drill pattern, sink and accessories.
4. 1" colour-matched filler strips are included with the purchase of your vanity based on the layout option selected. 4" colour-matched filler strips are available at an additional charge.
5. Your vanity top comes complete with a matching 4" backsplash. Side splashes are included based on the layout option chosen. For an additional charge, vanity tops can be custom cut to fit between two walls. Please consult with a sales associate to help you fill out a custom cut vanity top order form.
6. Review and place your order with your dealer. Expect delivery within two - three weeks (five weeks for Five Shades of Grey Premium Collection). Your dealer will have our delivery schedule.

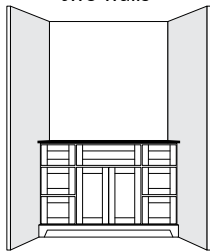




# LAYOUT OPTIONS

1

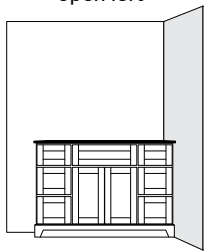
Between  
two walls



A-1

2

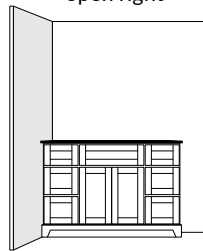
Wall on right,  
open left



A-2

3

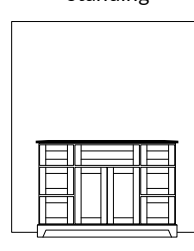
Wall on left,  
open right



A-3

4

Free  
standing



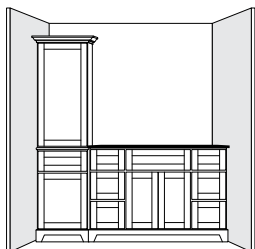
A-4

A

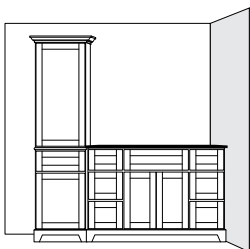
Vanity only

B

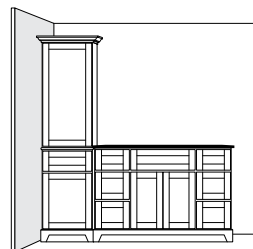
Vanity with  
Linen Tower  
(left)



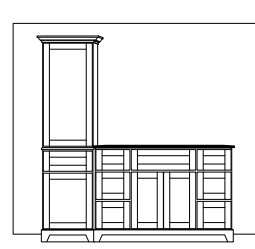
B-1



B-2



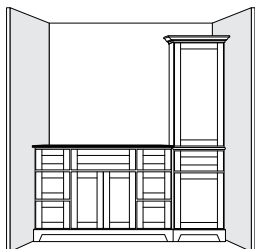
B-3



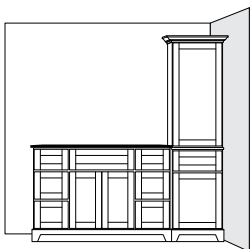
B-4

C

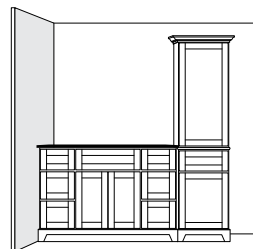
Vanity with  
Linen Tower  
(right)



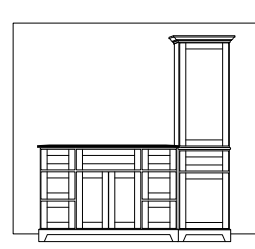
C-1



C-2



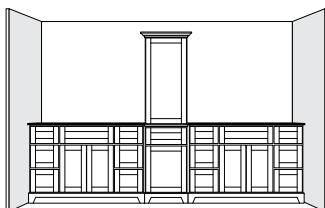
C-3



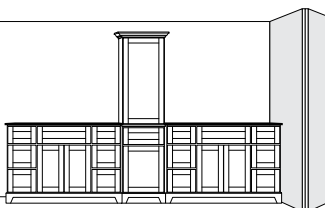
C-4

D

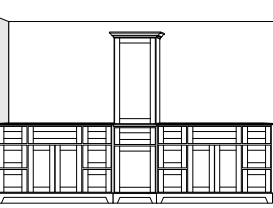
Double Vanity  
with  
Linen Tower  
(centred)



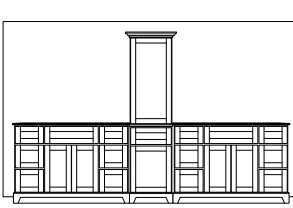
D-1



D-2



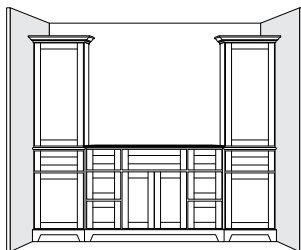
D-3



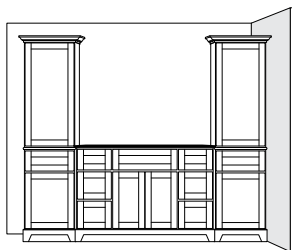
D-4

E

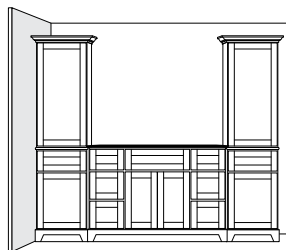
Vanity with  
Linen Towers



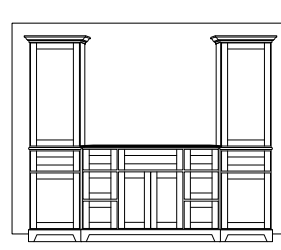
E-1



E-2



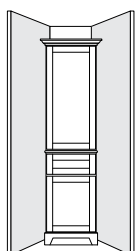
E-3



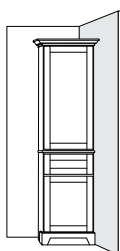
E-4

F

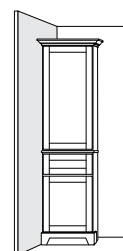
Linen Tower  
Only



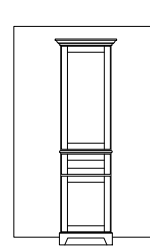
F-1



F-2



F-3



F-4

# EASY ORDERING

Follow the steps below to order your new vanity exactly the way you want it.

## 1. CHOOSE YOUR VANITY SIZE AND FINISH



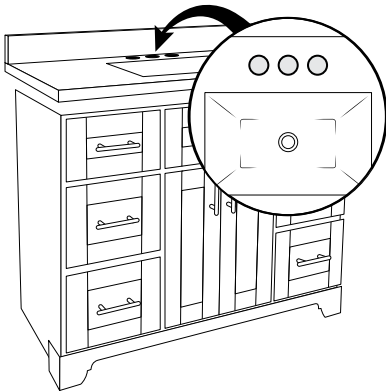
## 2. CHOOSE YOUR HARDWARE



## 3. CHOOSE YOUR STONE VANITY TOP



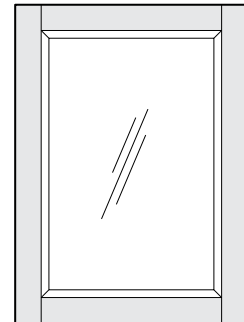
## 4. CHOOSE YOUR FAUCET DRILL PATTERN



## 5. CHOOSE YOUR SINK



## 6. CHOOSE YOUR ACCESSORIES



7. SPEAK TO YOUR SALES ASSOCIATE TO FINALIZE YOUR ORDER.  
EXPECT DELIVERY IN TWO - THREE WEEKS. (FIVE WEEKS FOR FIVE SHADES OF GREY.)

STONEWOOD  
— BATH CABINETRY —



stonewoodbath.com



Printed on 30% recycled material.  
Please recycle.