




Location:



SYMMONS® Origins ActivSense™

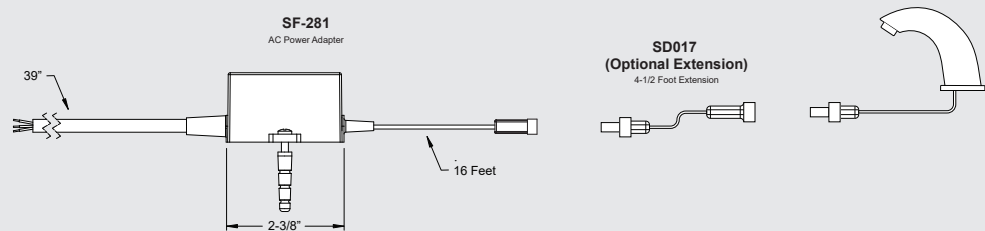


S6960B & S6960E Sensor Lavatory Faucet Specification Submittal

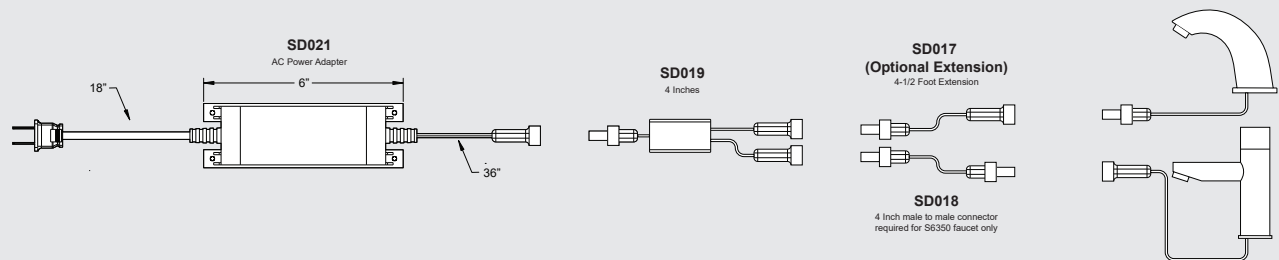
Model Numbers	Feature Highlights
<input type="checkbox"/> S6960B <i>Single Supply Sensor Lavatory Faucet 6X1.5V Batteries included</i>	<ul style="list-style-type: none">• LEED Rating• Optional hygiene flush• Robust brass body• Adjustable settings• Easy to install• ADA compliant• Single hole or 4" center, optional deck plate included
<input type="checkbox"/> S6960E <i>Single Supply Sensor Lavatory Faucet 9V Transformer</i>	
<input type="checkbox"/> S6960BM <i>Dual Supply Sensor Lavatory Mixer 6X1.5V Batteries included</i>	
<input type="checkbox"/> S6960EM <i>Dual Supply Sensor Lavatory Mixer 9V Transformer</i>	
Finish Options/Modifications	Compliance
<input type="checkbox"/> STS <i>Stainless Steel finish</i>	<ul style="list-style-type: none">- ASME A112.18.1/CSA B125.1- NSF/ANSI 372- UL# E311169 (USA & Canada)- Buy American Act Compliant  
<input type="checkbox"/> 035 <i>0.35 gpm (1.3 L/min) flow restrictor</i>	
<input type="checkbox"/> 10 <i>1.0 gpm (3.8 L/min) flow restrictor</i>	
Note: Append appropriate suffix to model number.	Warranty Limited Lifetime - to the original end purchaser in consumer/residential installations. 10 Years - for commercial/industrial installations. Refer to www.symmons.com/warranty for complete warranty information. 
Options <i>(sold as separate line items)</i>	
<input type="checkbox"/> RC6960 <i>Remote Control</i>	
<input type="checkbox"/> SD6960BL <i>Matching ORIGINS soap dispenser Battery</i>	
<input type="checkbox"/> SD6960BF <i>Matching ORIGINS soap dispenser</i>	
<input type="checkbox"/> USDP8 <i>8 Inch Deck Plate</i>	
<input type="checkbox"/> SD010 <i>Converts S6960B to AC powered (S6960E)</i>	
<input type="checkbox"/> SF278 <i>120V Cable 4.5 feet long Hard wired 15 Amp circuit. (QTY:10) 12 Volt Outputs , 4.2A Any combination of devices 10 devices maximum (SF277 not included)</i>	
Note: Append appropriate suffix to model number.	

Power Layout

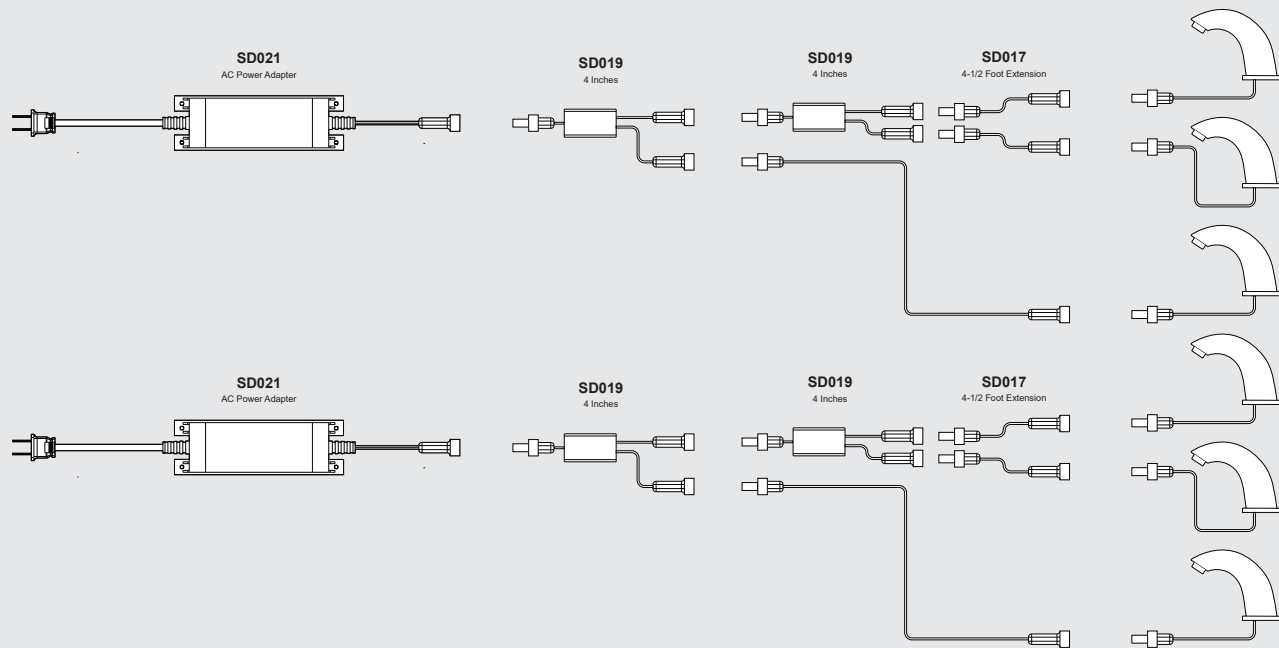
1 Devices - 1 Power Supply



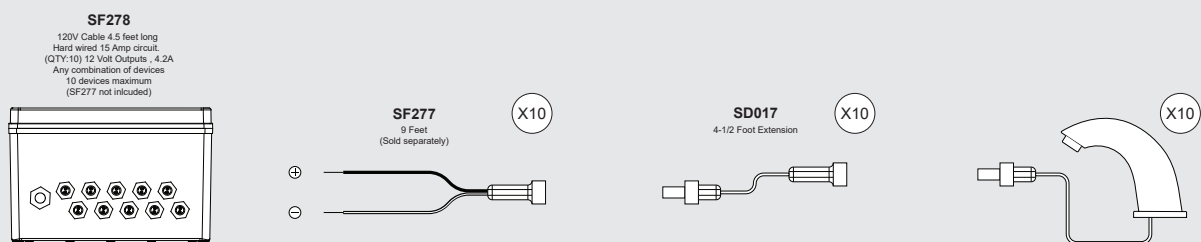
2 Devices - 1 Power Supply



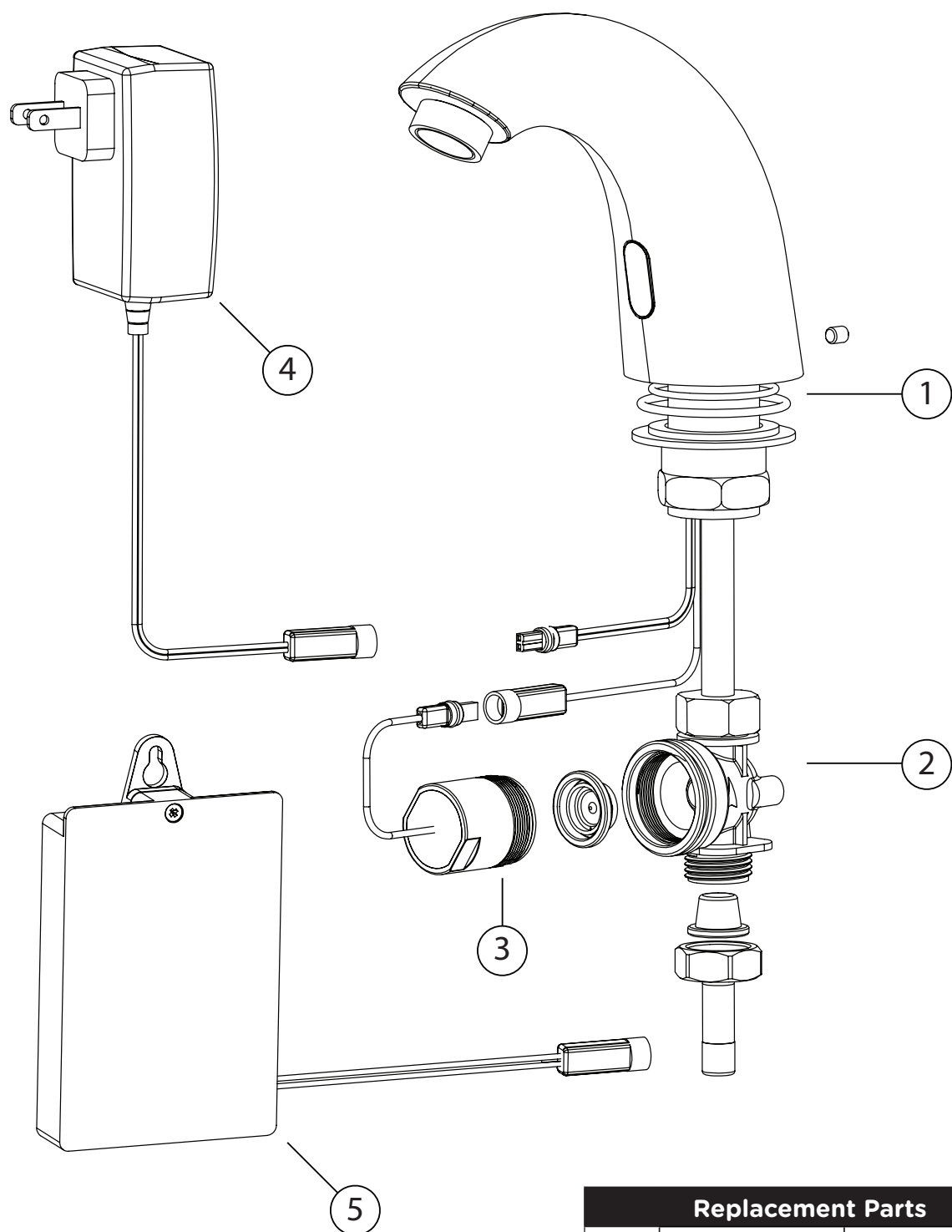
6 Devices - 2 Power Supply



10 Devices - 1 Power Supply



Installation /Repair Parts

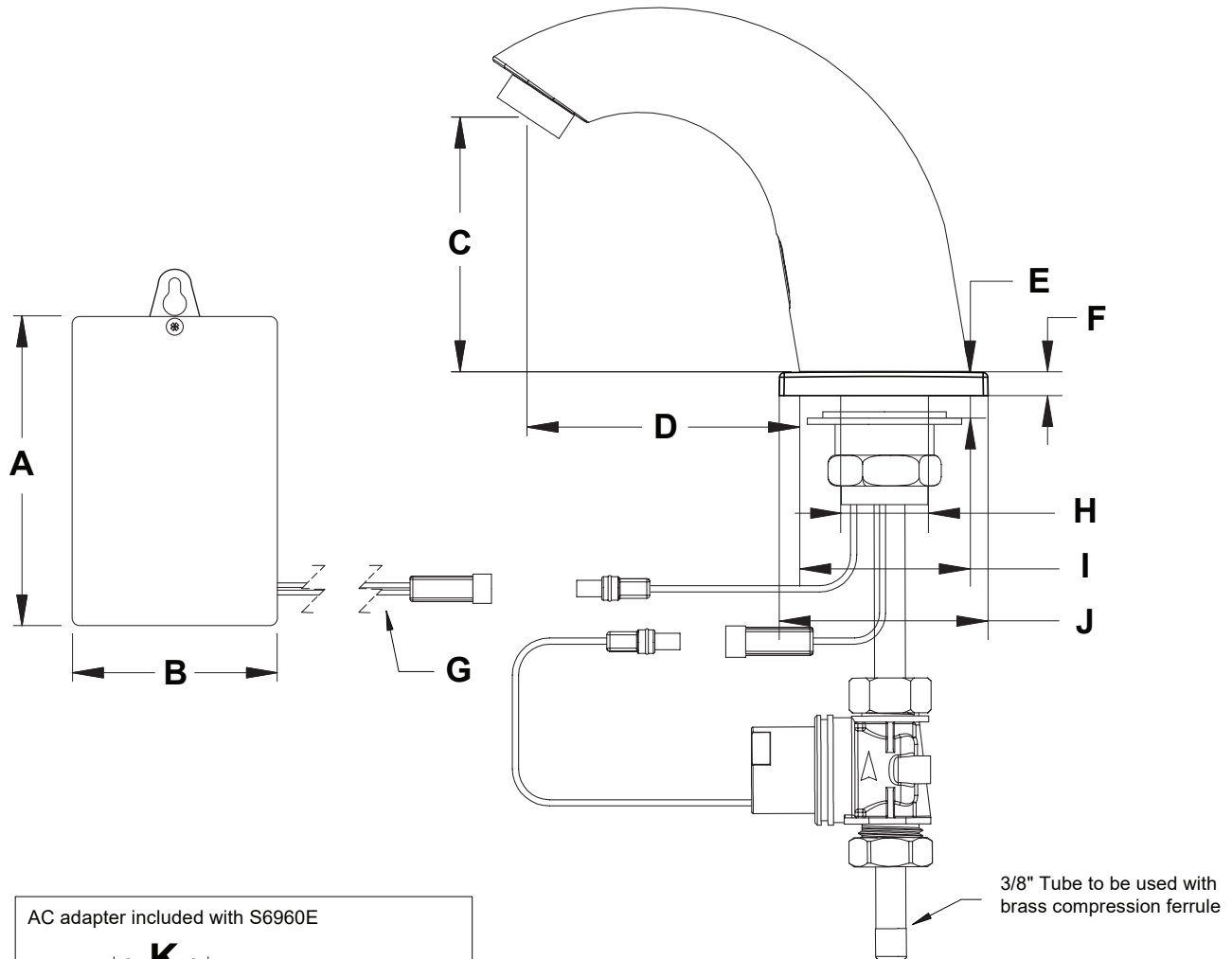


Note: Dimensions subject to change without notice.

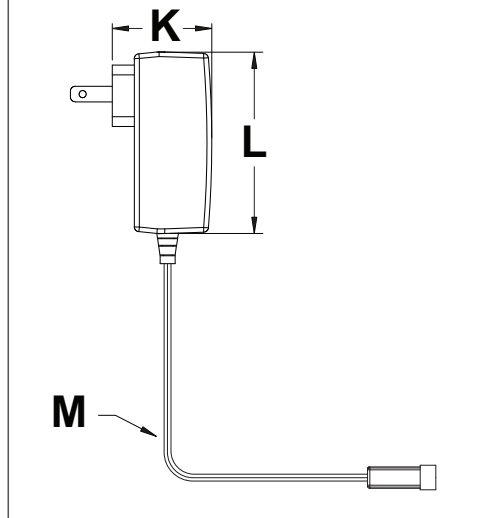
Replacement Parts		
Item	Description	Part No.
1	Seals and screws kit	SF250
2	Solenoid valve kit	SF253
3	Solenoid housing kit	SF255
4	Battery box	SF258
5	12V Transformer	SD010
6	4" Deck plate	USDP4

Dimensions

S6960B / S6960E



AC adapter included with S6960E



Measurements

A	5" , 127 mm
B	3" , 76 mm
C	3-1/4" , 82 mm
D	3-1/2" , 88 mm
E	Deck Thickness Max: 1-3/8" With Deck Plate - Max: 1"
F	5/16" , 8 mm
G	18" , 457 mm
H	Ø Min:1-1/8" , 28 mm Ø Max:1-1/2" , 38 mm
I	Ø 2-1/8" , 55 mm
J	2-5/8" , 67 mm
K	1-5/8" , 41 mm
L	2-7/8" , 74 mm
M	15' , 4.5 m

Note: Dimensions subject to change without notice.