

# INSTALLATION GUIDE

## WELLINGTON

### General Information

Please check the condition & that all parts are included with your new shower doors. Any issues must be reported right away. Delaying this might affect the warranty of the item.

**Warning:** *handle glass with care. It cannot be re-worked.*

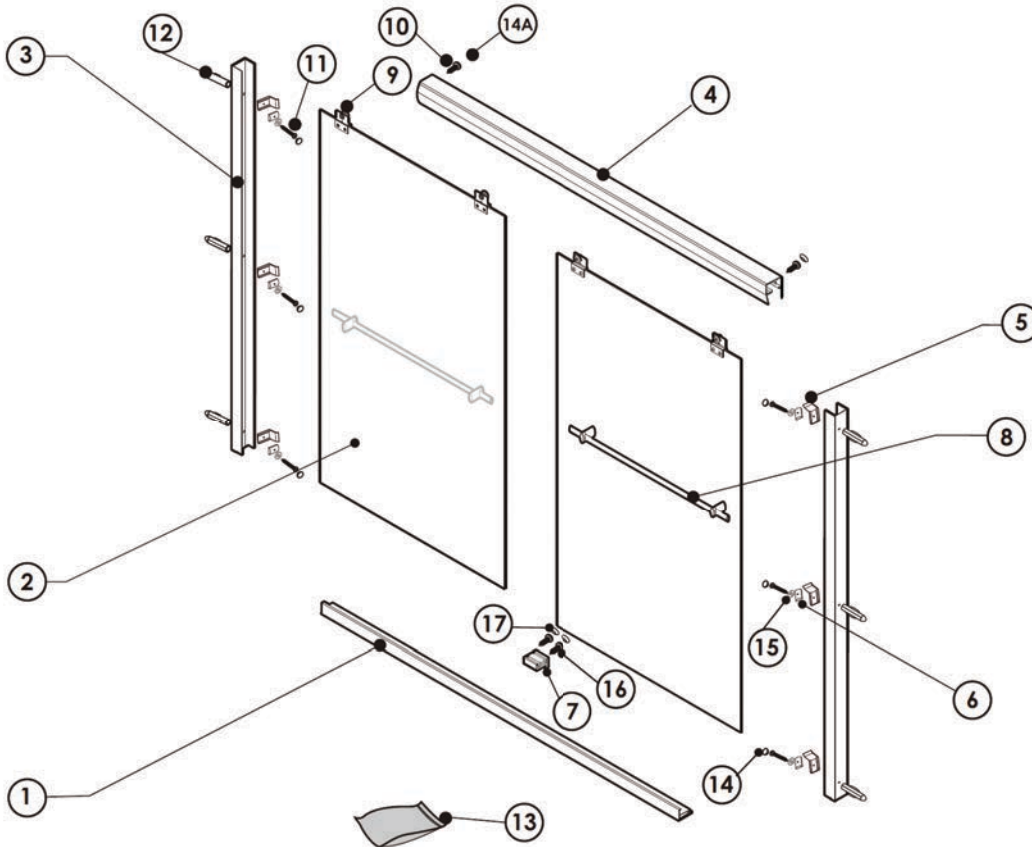
**Aftercare:** clean regularly with soap & water; especially in areas with hard water. Avoid contact with strong chemicals such as organic solvents or strippers.

**Warning:** *two adults may be required to install shower doors.*

### Recommended Tools



### Assembly Drawing



Item No.	Description	Q'TY
1	Bottom Horizontal Rail	1
2	Door Panels	2
3	Wall Jamb	2
4	Top Horizontal Rail	1
5	Glass Blocks-A	6
6	Glass Blocks-B	6
7	Glass Tracks	1
8	Handles	2
9	Wheels	4
10	M4 Screws -10mm	2
11	Fixed Panel Wall jamb fixing M4 Screws-35mm	6
12	Wall Plugs	6
13	Lubrication oil	1
14	Fixed Panel Screw Caps	6
14A	Bottom Horizontal Rail Screw Caps	2
15	M4 Washers	6
16	M4 Screws-14mm	2
17	Glass Tracks Screw Caps	2

**Disclaimer:** please hire a specialist if you feel you are unable to install yourself. Teago cannot be held liable for a faulty install or damage done by it.



Massachusetts Code: Approved



10-Year  
Warranty

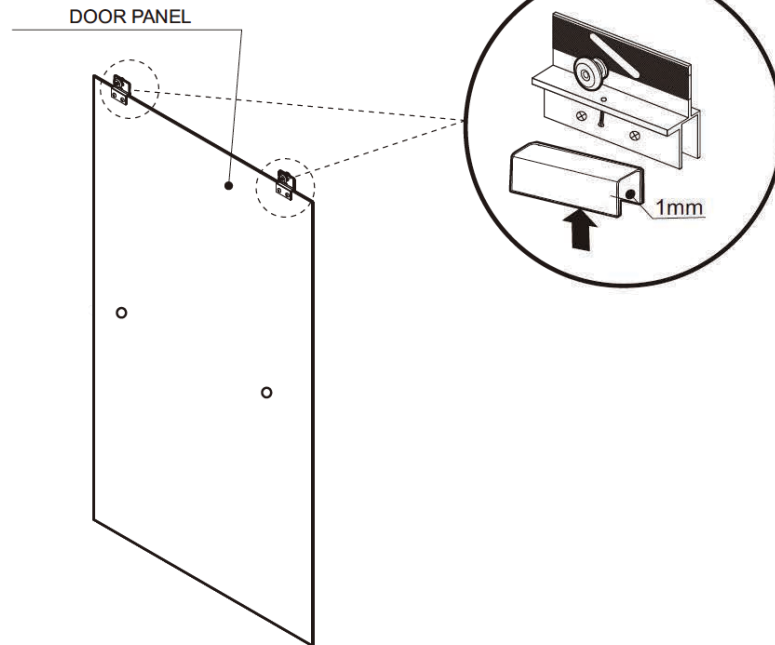
**teago.ca**

# INSTALLATION GUIDE

## WELLINGTON

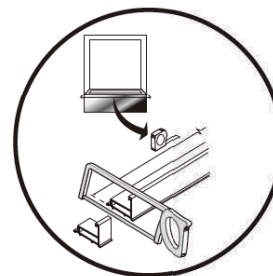
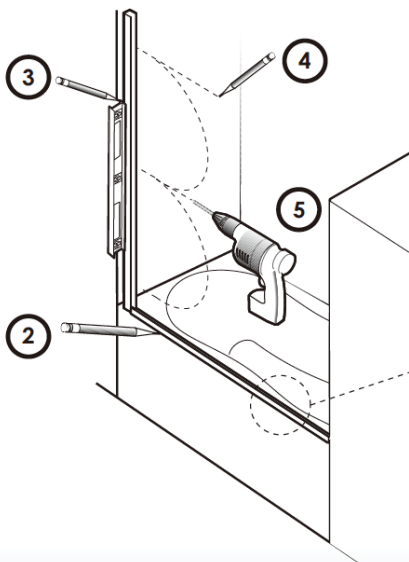
Install Steps (Page 1)

### Step 1

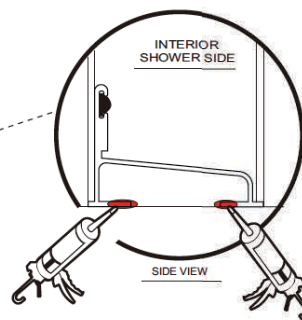


### Step 2

REPEAT ON BOTH SIDES



MEASURE THE BOTTOM PART. CUT THE SPARE LENGTH WITH A SAW, IF THE SIZE YOU WANT IS LESS THAN 1500mm



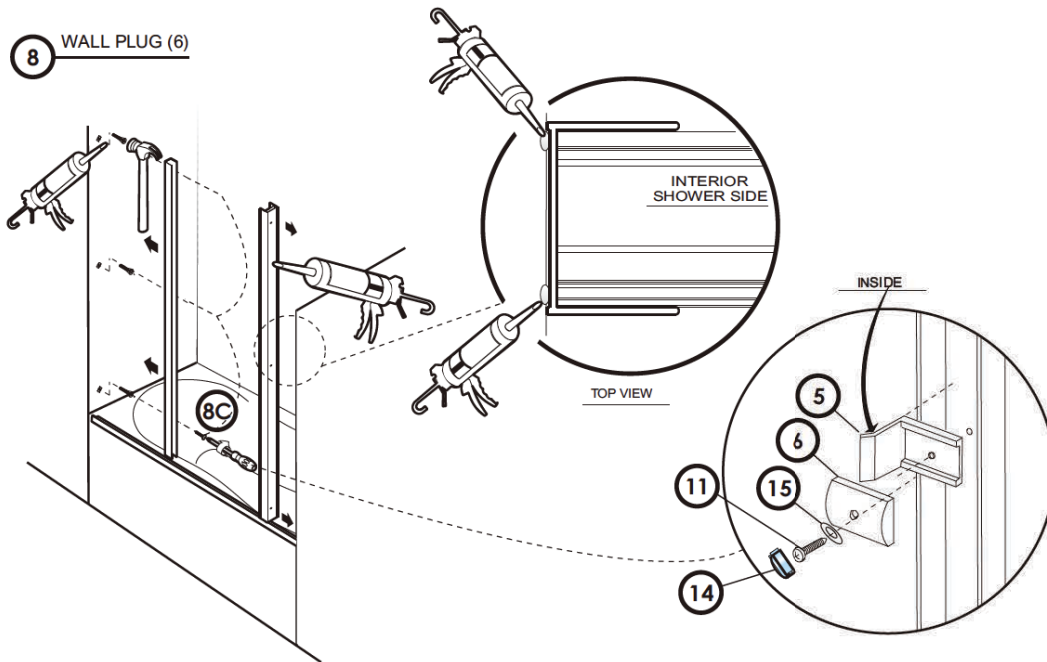
BOTTOM TRACK (1) SILICONE UNDERNEATH

# INSTALLATION GUIDE

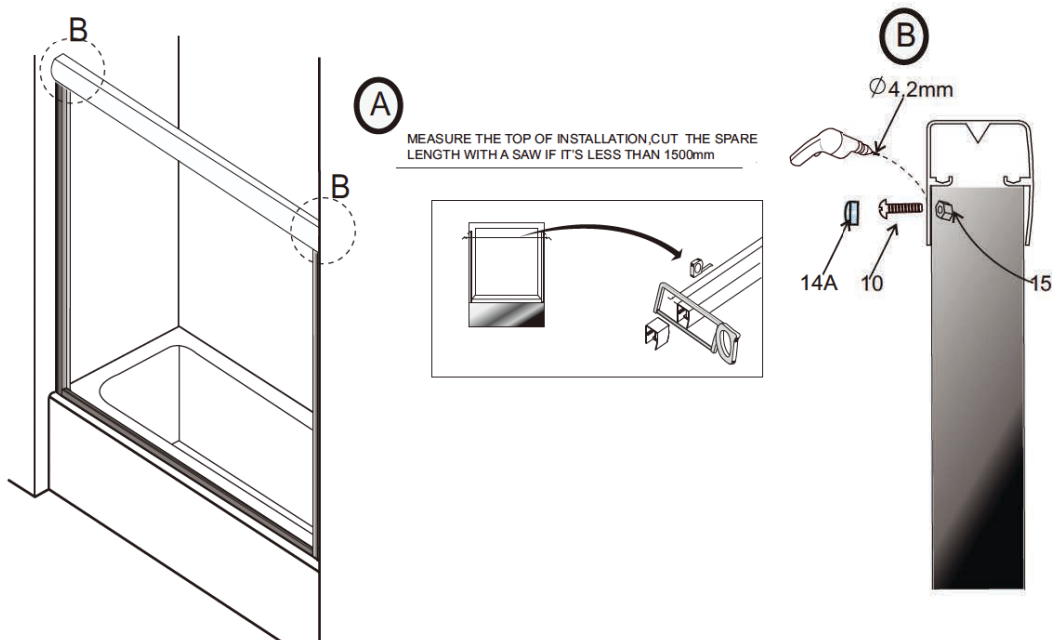
## WELLINGTON

Install Steps (Page 2)

### Step 3



### Step 4



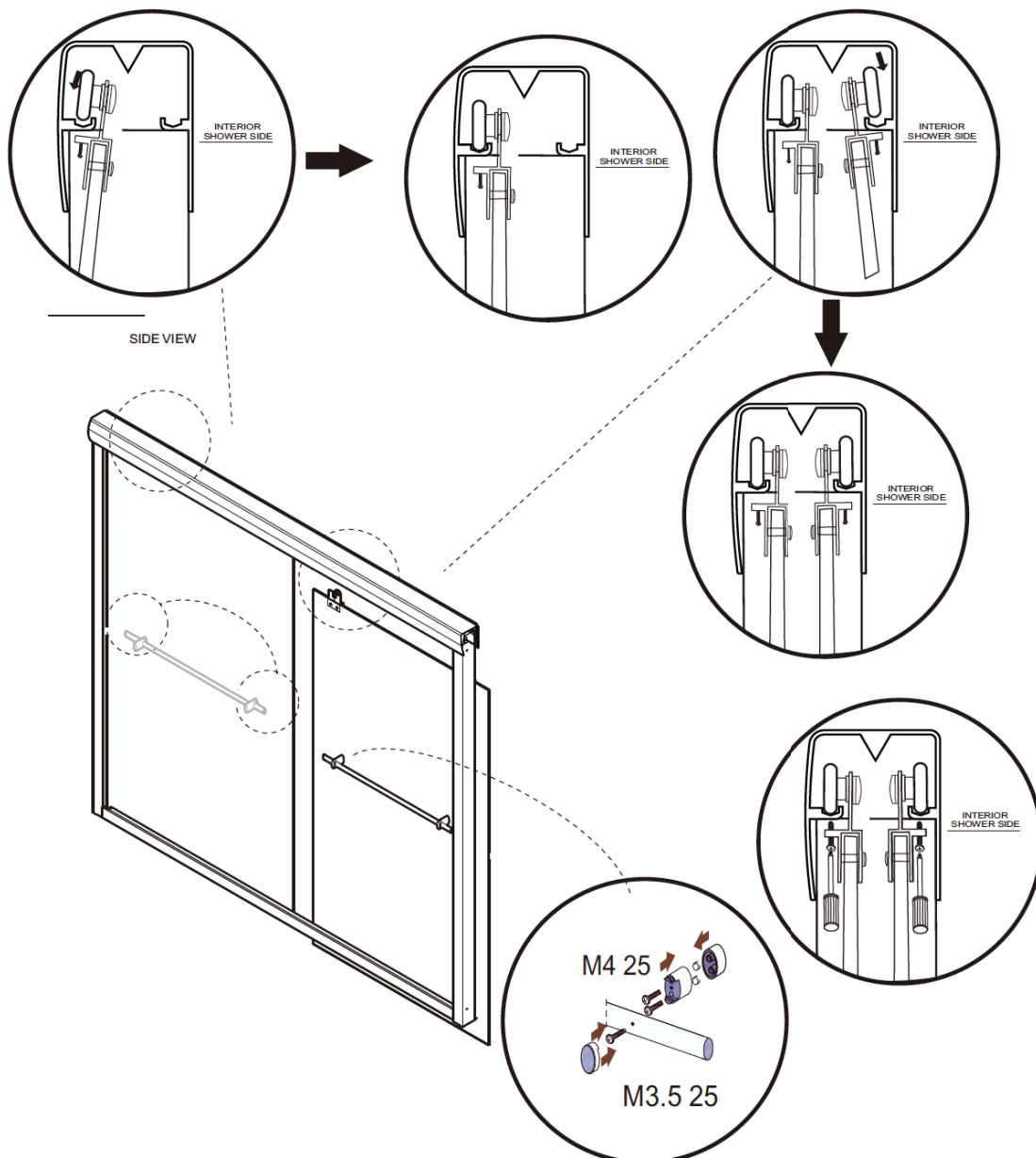
# INSTALLATION GUIDE

## WELLINGTON

Install Steps (Page 3)

### Step 5

INSERT OUTER DOOR PANEL BY LIFTING UP & INTO TOP TRACK



# INSTALLATION GUIDE

## WELLINGTON

Install Steps (Page 4)

### Step 6

- PUT THE CENTER GUIDE IN THE MIDDLE OF THE BOTTOM TRACK
- FASTEN GUIDE WITH SCREW 3/8" LG (2) + SCREW CAP (2)

