



## INSTALLATION GUIDE

### STRATHCONA

#### General Information

Please check the condition & that all parts are included with your new shower doors. Any issues must be reported right away. Delaying this might affect the warranty of the item.

**Warning:** *handle glass with care. It cannot be re-worked.*

**Aftercare:** clean regularly with soap & water; especially in areas with hard water. Avoid contact with strong chemicals such as organic solvents or strippers.

**Warning:** *two adults may be required to install shower doors.*

#### Recommended Tools



Electric Drill



Drillbits  
(1/4" & 1/8")



Tape Measure



Silicone Gun



Leveler



Pencil

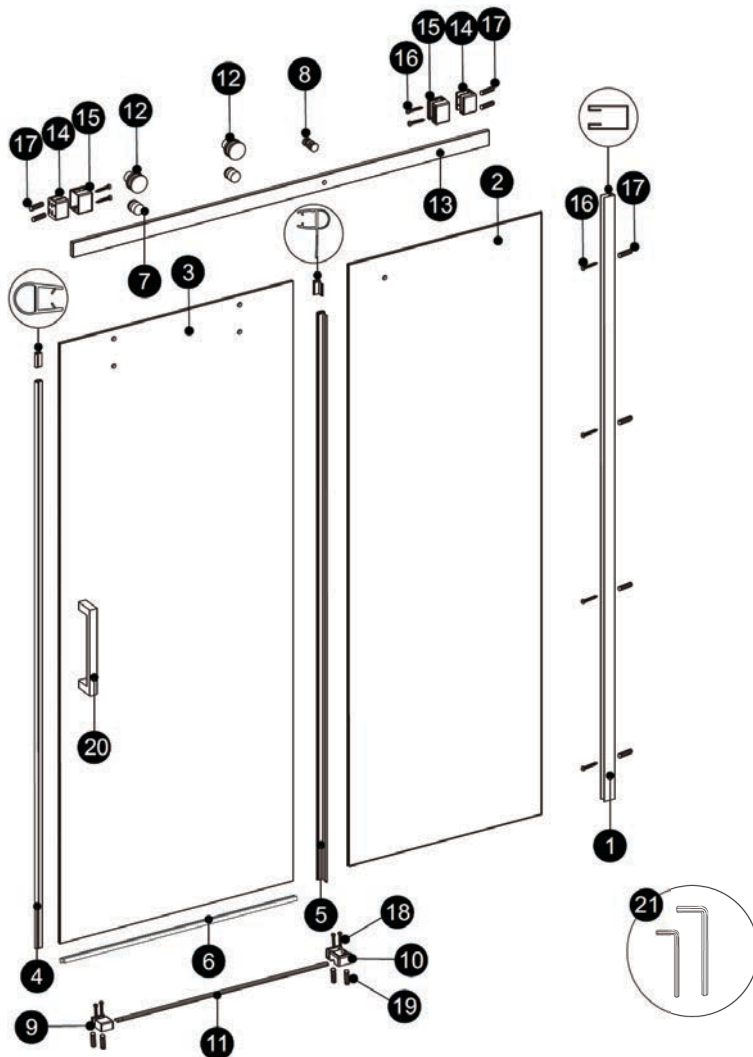


Flat/Cross  
Screwdriver



Hammer

#### Assembly Drawing



PART #	DESCRIPTION	Q'TY
1	Wall Jamb	1pc
2	Fixed Panel	1pc
3	Door Panel	1pc
4	Gasket-A	2pcs
5	Gasket-B	2pcs
6	Gasket-C	2pcs
7	Lock In Knob Sets	2sets
8	Glass Fixing Piece	1set
9	End Block(L/R) x 1 for each	1set
10	Sliding Block(L/R) x 1 for each	1set
11	Drip Rail	1pc
12	Roller Sets	2sets
13	Top Rail	1pc
14	Square Wall Joints(L/R)	1set
15	Wall Caps	2pcs
16	Screws ST5x2"	8pcs
17	Wall Plugs-A	8pcs
18	Screws ST4x1 3/8"	4pcs
19	Wall Plugs-B	4pcs
20	Handle	1pc
21	Wrenches	2pcs

**Disclaimer:** *please hire a specialist if you feel you are unable to install yourself. Teago cannot be held liable for a faulty install or damage done by it.*



Massachusetts Code: Approved



10-Year  
Warranty

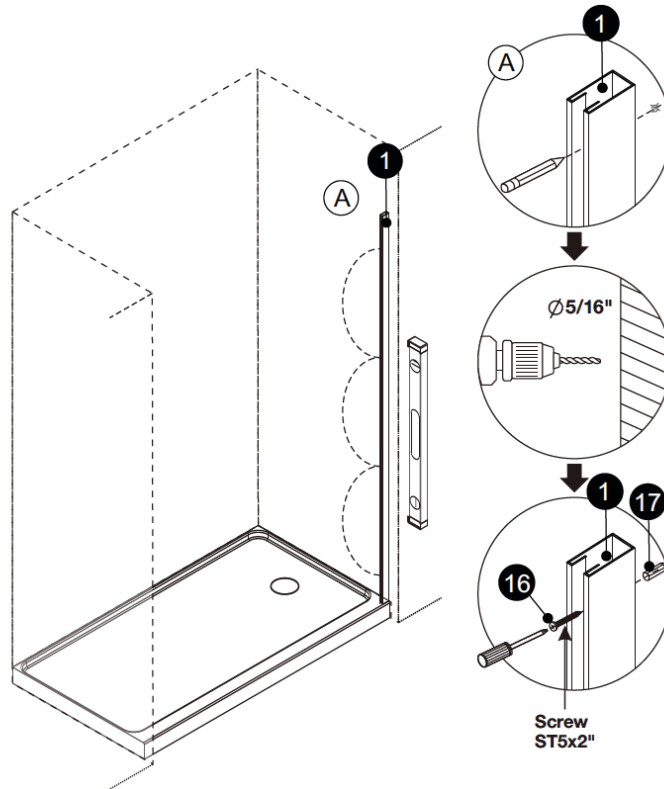
**teago.ca**

# INSTALLATION GUIDE

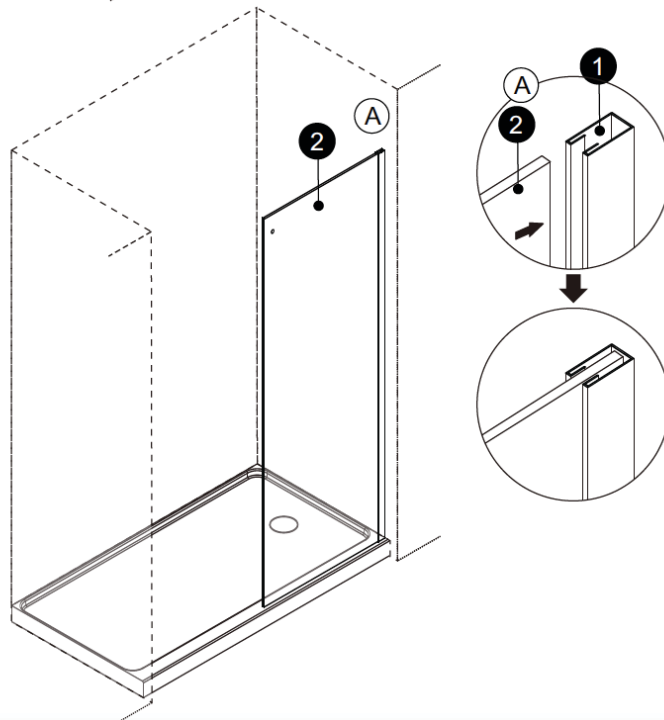
## STRATHCONA

Install Steps (Page 1)

### Step 1



### Step 2



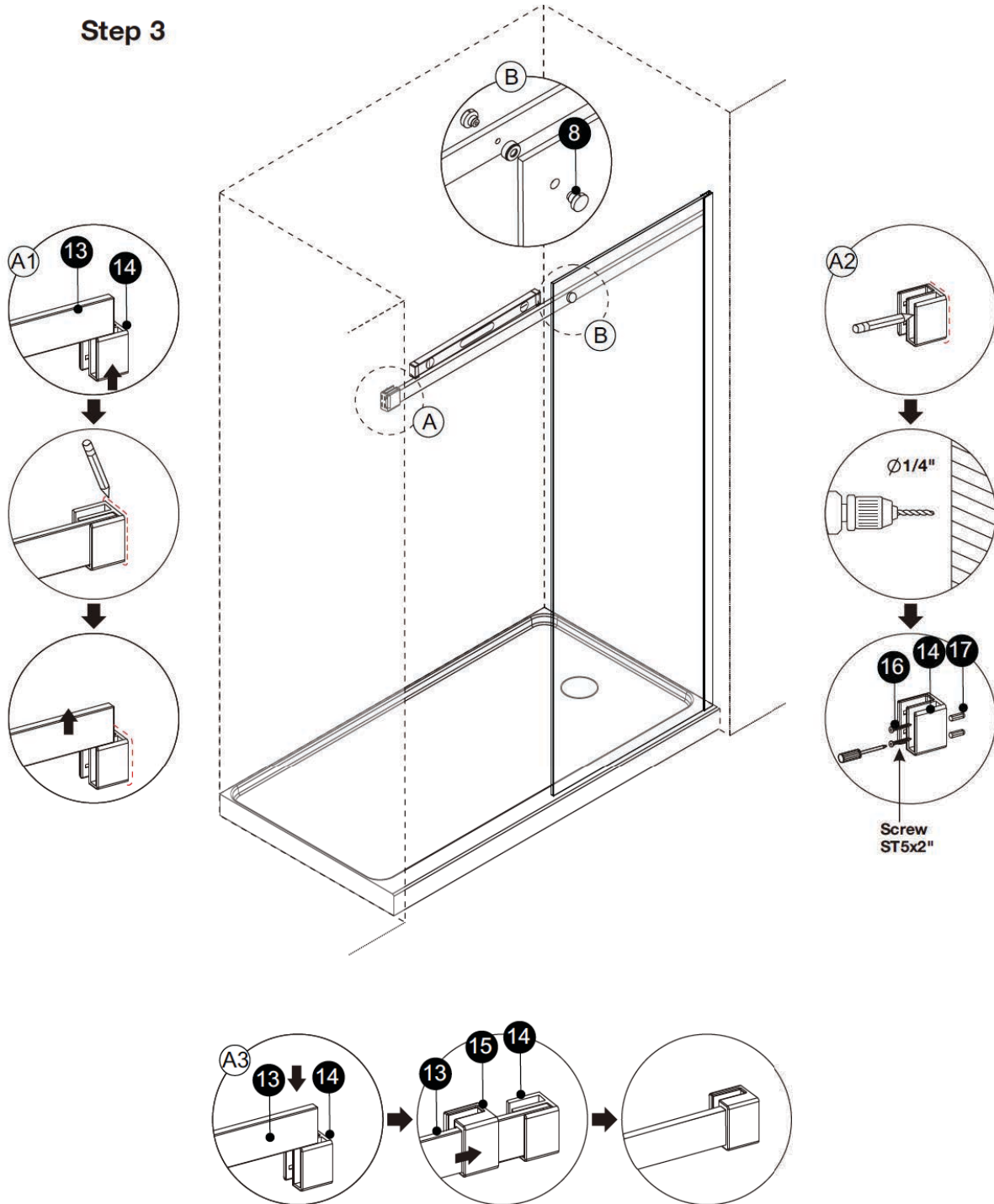


## INSTALLATION GUIDE

### STRATHCONA

Install Steps (Page 2)

#### Step 3

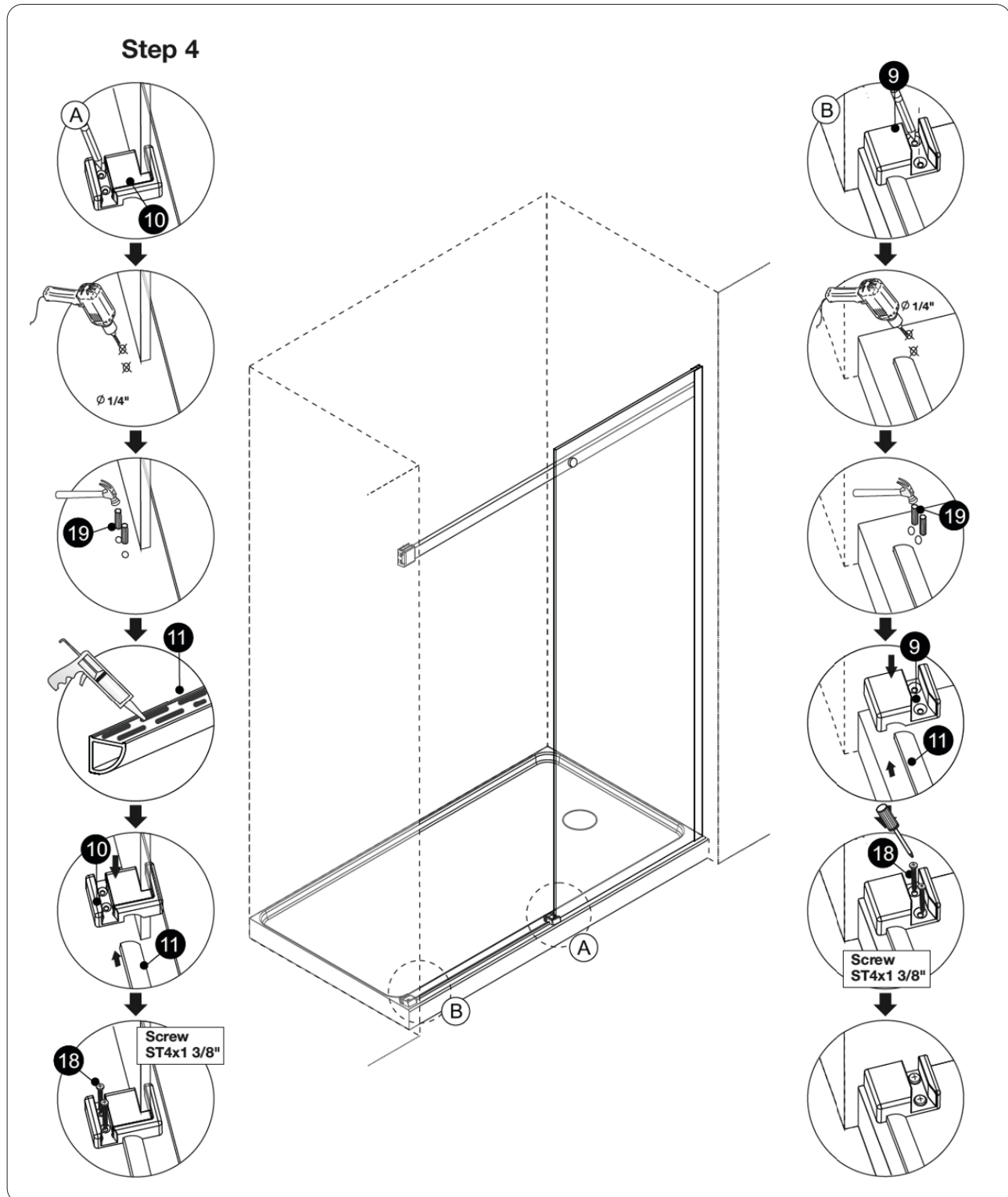




## INSTALLATION GUIDE

### STRATHCONA

Install Steps (Page 3)

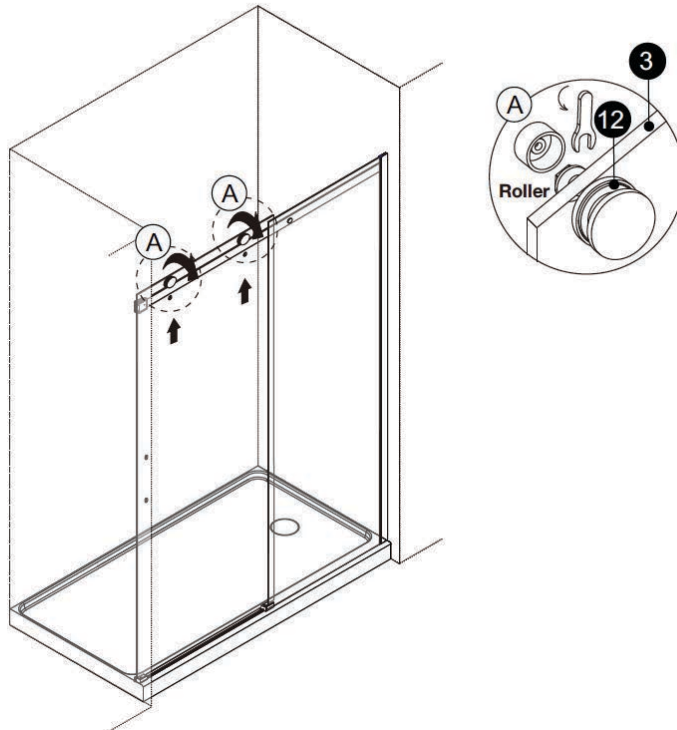


# INSTALLATION GUIDE

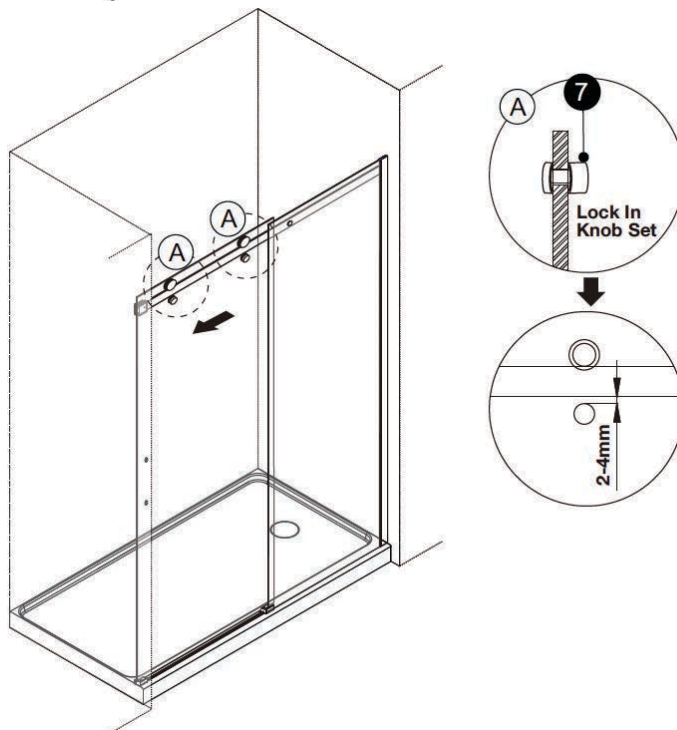
## STRATHCONA

Install Steps (Page 4)

### Step 5



### Step 6

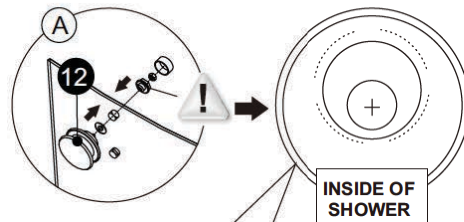
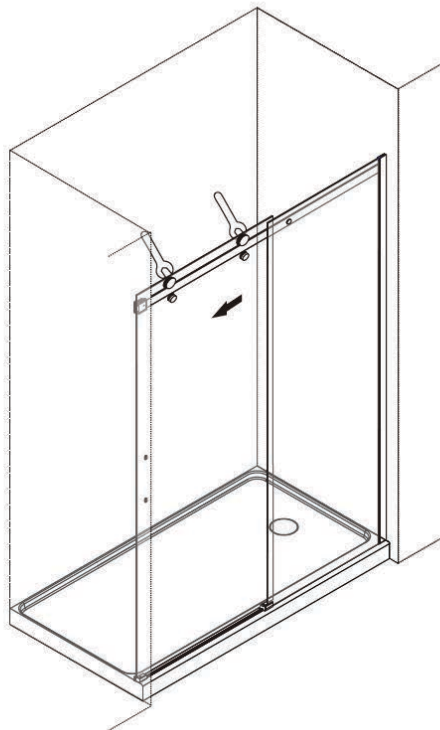


# INSTALLATION GUIDE

## STRATHCONA

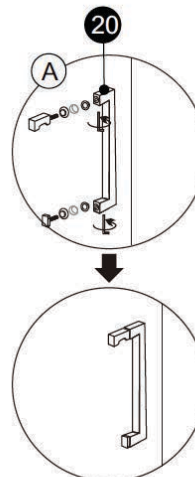
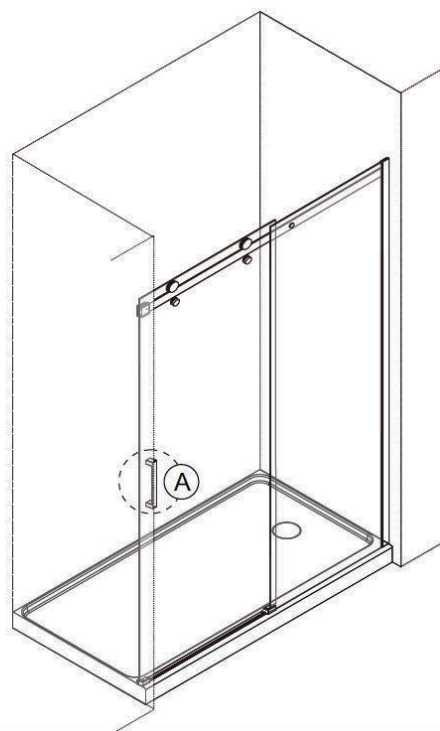
Install Steps (Page 5)

### Step 7



**!** Carefully slide the door toward the wall and check the door is sliding smoothly. Adjust if necessary using offset in rollers, so that the sliding door is parallel to the tray.

### Step 8



View from inside

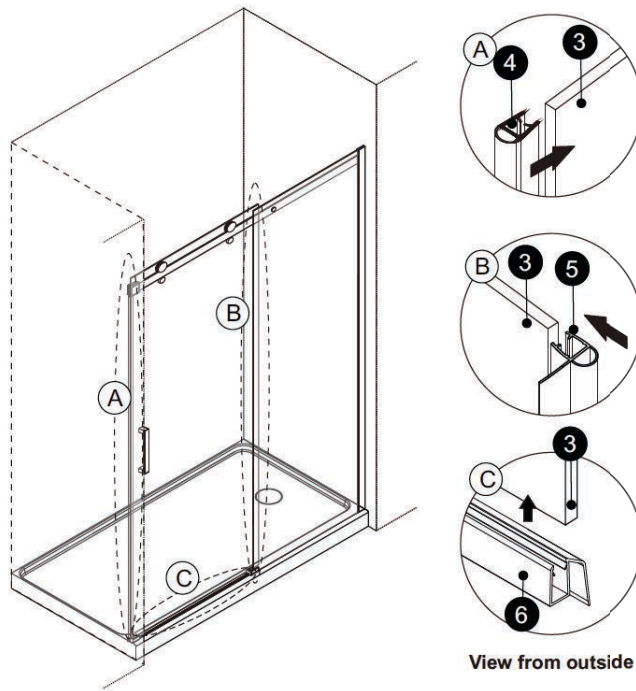


# INSTALLATION GUIDE

## STRATHCONA

Install Steps (Page 6)

### Step 9



### Step 10

