

U Technology™
Corporation



U Technology is a proud Canadian based company. Our mission is to “**make innovative lighting accessible to everyone, everywhere.**”

When it comes to LED lighting, one size does not fit all. U Technology's solutions and custom manufacturing enables clients to use our versatile solutions for all their applications. We create solutions that take all aspects of the project into account, from design to maintenance. Our team at U Technology takes the time to evaluate each project and explain different options based on the requirements and budget.



EFFICIENT



DIMMABLE



CCT VARIETY



CUSTOMIZABLE



LONG LASTING



INDEX

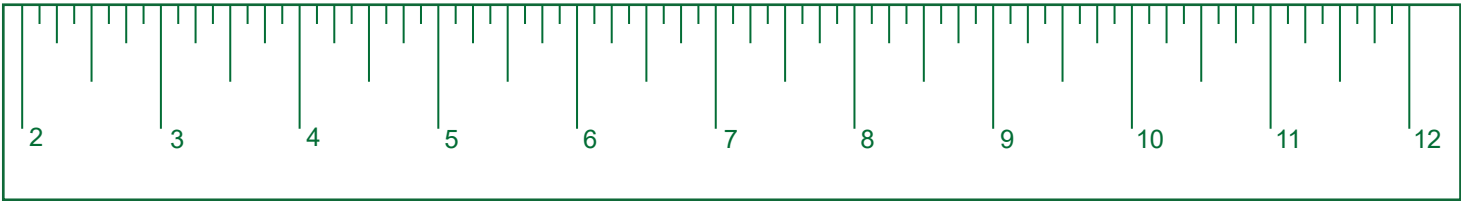
SOLE Series	5-10
SOLE Accessories	9-10
MIKRA Series	11-12
UNITI Series	13-14
ARMOR Series	15-18
POWER Supply	19-22

SOLE Series

U Technology SOLE Series is designed for ceiling lighting applications in both residential and commercial settings. Our product sizing begins at 3 inches in diameter and extends to 12 inches. All the models have the same 120 VAC input and are compatible with most standard LED triac dimmers. The fixture optics are designed to reduce glare and are available in a variety of trim colors. All of our SOLE LED products are dimmable and certified to CSA standards.



WE'VE GOT YOU COVERED



DL-DIRECT 4" | 6" | 8"

4" Part #: UT-DL-DIRECT-4

6" Part #: UT-DL-DIRECT-6

8" Part #: UT-DL-DIRECT-8

Key Features:

- Recessed Mount
- Rating: Damp Location
- Beam Angle: 120° Flood
- Dimming: Triac to 5%
- Trim Finish: Black, White, Brushed Nickel



DL-DLG 4" | 6"

4" Part #: UT-DL-DLG-4

6" Part #: UT-DL-DLG-6

Key Features:

- Recessed Mount, Bi-Directional
- Tilt / Beam Angle: 25° / 120° Flood
- Dimming: Triac to 5%
- Trim Finish: Black and White
- Dual Switchable CCT



DL-DOME 4" | 6" - Indirect Light

4" Part #: UT-DL-DOME-4-R-WH-30K

6" Part #: UT-DL-DOME-6-R-WH-30K

Key Features:

- Architectural Grade
- Beam Angle: 120° Flood
- Dimming: Triac to 5%
- Trim Finish: White



For further information please contact us

www.utechnology.ca | (403) 800-3044



Follow Your Local Electrical Code Requirements

DL-DIRG 3"

Part #: UT-DL-DIRG



- Key Features:**
- Architectural Grade
 - Rating: Damp Location
 - Recessed Mount, 360° Gimbal
 - Tilt / Beam Angle: 30° / 40°
 - Dimming: Triac to 5%
 - Trim Finish: Black, White, Brushed Nickel

DL-US 5" | 7" | 12"

5" Part #: UT-DL-US-5

7" Part #: UT-DL-US-7

12" Part #: UT-DL-US-12

- Key Features:**
- Ultra-thin Surface Mount
 - Rating: Damp Location
 - Beam Angle: 120° Flood
 - Dimming: Triac to 5%
 - Trim Finish: White



DL-US-PIR 4"

Part #: UT-DL-US-4-PIR

- Key Features:**
- Built-in Proximity Sensor
 - Ultra-thin Surface Mount
 - Rating: Damp Location
 - 30 Second Time Delay
 - 14 Foot Detection Distance
 - Trim Finish: White



For further information please contact us
www.utechnology.ca | (403) 800-3044



Octagon Boxes are Not Included
Follow Your Local Electrical Code Requirements



RECESSED MOUNT
DOWNLIGHT
ACCESSORIES

Rough-In Plate

- 3" Part #: UT-RIP-3
- 4" Part #: UT-RIP-4
- 6" Part #: UT-RIP-6



Vapor Barrier*

- 4" Part #: UT-VB-40
- 6" Part #: UT-VB-60

*Must be stored & installed
above 20 °C



SURFACE MOUNT
DOWNLIGHT
ACCESSORIES

Retrofit Kits:

- 4" Housing: UT-DL-US-5-RF
- 5" & 6" Housing: UT-DL-US-7-RF

Conversion to Black Trim:

- UT-DL-US-5-R-BK-RING
- UT-DL-US-7-R-BK-RING



MIKRA Series

MIKRA Series cabinet lights are the popular option for general cabinetry, shelving, stairs, or other small area lighting. Our LED Technology ensures the light output is uniform with no visual hot spotting. The lights are dimmable to 1% and are available in three trim colors. Their compact size makes them the ideal solution for many indoor applications.



MIKRA - CLM

Part #: UT-CLM

Key Features:

- Less than 1/4" Thick when Surface Mounted
- Dimming Range Down to 1%
- Recessed or Surface Mount
- Comes in a Pack of Three with a Complimentary Non-Dimmable Driver and Connector Cable



MIKRA - CLS

Part #: UT-CLS

Key Features:

- Architectural Grade
- Recessed or Surface Mount
- Individually Packaged



MIKRA - CLG

Part #: UT-CLG

Key Features:

- Architectural Grade
- Recessed Mount
- 25° Bi-Directional Gimbal Adjustment
- 60° Beam Angle
- Individually Packaged



For further information please contact us

www.utechnology.ca | (403) 800-3044



All Dimensions are Approximate
Please Acquire Product Sample for Precise Milling

UNITI System

UNITI FLEX LED Tape Light is our durable standard product suitable for a wide array of residential and commercial applications. Examples include, but are not limited to: kitchen, bathroom, cove, hallway, exterior, and much more. UNITI products have you covered with the ARMOR Aluminum Series, LED Drivers, connectors and controls. We also welcome custom design and manufacturing requests. Our carefully selected LEDs are designed to exceed 50,000 hours when used with our ARMOR Aluminum Profile and Advanced Power Supplies.

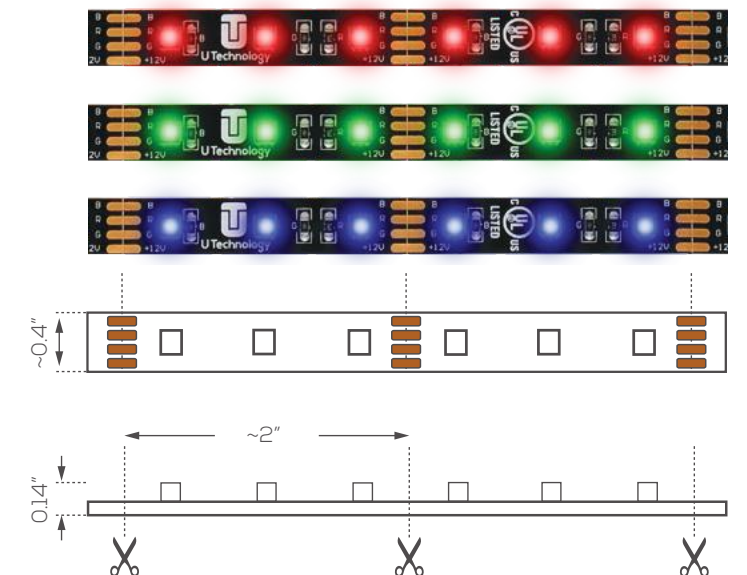


UNITI SE Series RGB 60 LED/Meter

Part #: UT-FLSE-60-12V-RGB

Key Features:

- Red, Blue, and Green color
- Dry (IP20) | Wet (IP65)
- Comes 18 Feet Per Package
- Available Accessories:
 - Basic RGB Controller and Signal Amplifier
 - Connectors

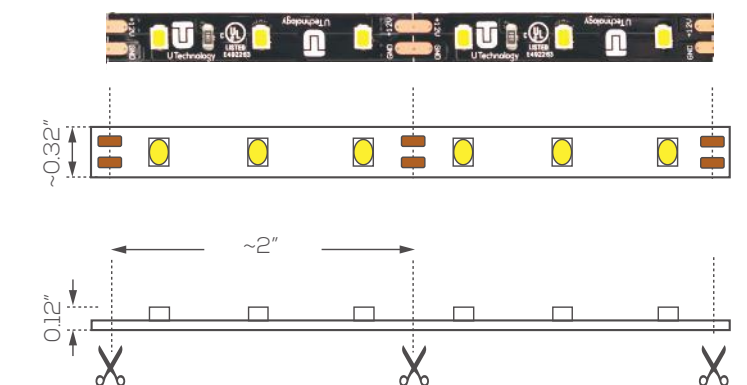


UNITI SE Series 60 LED/Meter

Part #: UT-FLSE-60-12V

Key Features:

- CCT: 2700K, 3000K, 3500K, 4000K, 5000K
- Dry (IP20) | Wet (IP65)
- Comes 18 Feet Per Package
- Available Accessories:
 - Signal Amplifier
 - Connectors

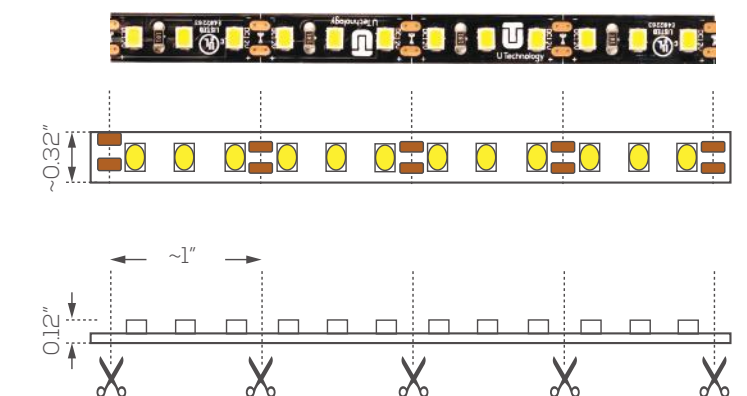


UNITI SE Series 120 LED/Meter

Part #: UT-FLSE-120-12V

Key Features:

- CCT: 3000K, 4000K
- Dry (IP20) | Wet (IP65)
- Comes 18 Feet Per Package
- Available Accessories:
 - Signal Amplifier
 - Connectors



For further information please contact us

www.utechnology.ca | (403) 800-3044



UNITI Must be Stored & Installed in a Clean Conditions Above 20 °C

ARMOR SE Series

Our anodized aluminum ARMOR Series provides the perfect fit and protection for cove lighting, under-counter, stairs, exterior, and much more. In addition, it provides the required heat sinking to extend LED lifespan. The polycarbonate lens included provides protection from dust and moisture while diffusing the light.



ARMOR SE Series Standard

Part #: UT-PR-ST-8FT

Key Features:

- Ideal for surface mount installations
- Provides full light diffusion with UNITI Flex Tape 120 LED/m
- Mounting clips and end caps sold separately

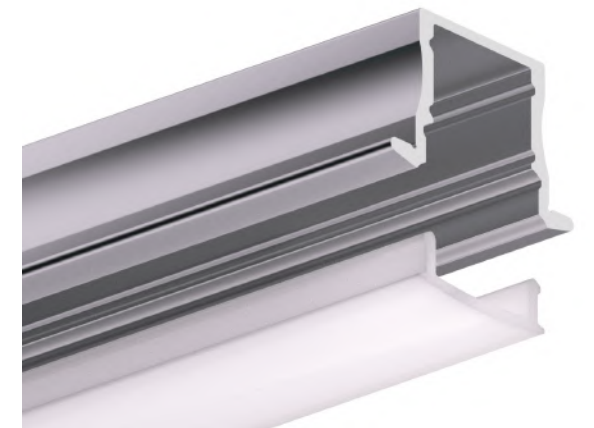


ARMOR SE Series Standard Flanged

Part #: UT-PR-STFL-8FT

Key Features:

- Perfect for recessed light installations
- Provides full light diffusion with UNITI Flex Tape 120 LED/m
- End caps sold separately

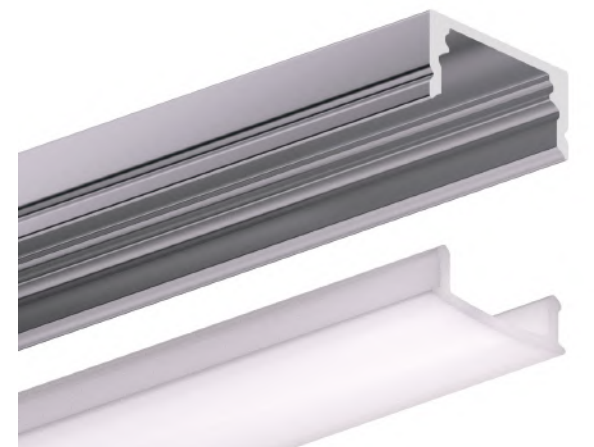


ARMOR SE Series Slim

Part #: UT-PR-SL-8FT

Key Features:

- Used for low clearance for tight surface mounting
- Mounting clips and end caps sold separately



For further information please contact us

www.utechnology.ca | (403) 800-3044



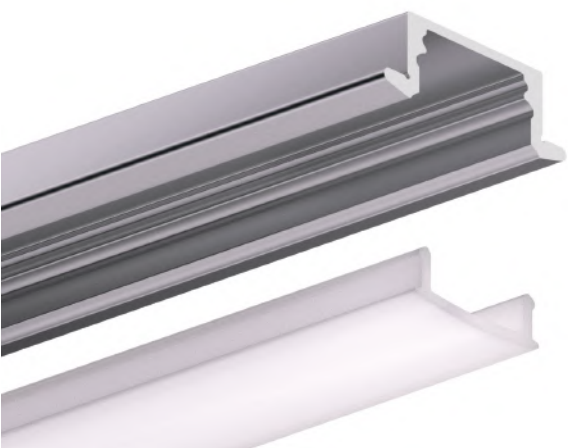
All Dimensions are Approximate
Please Acquire Product Sample for Precise Milling

ARMOR SE Series
Slim Flanged

Part #: UT-PR-SLFL-8FT

Key Features:

- Used in shallow depth for narrow recesses applications
- End caps sold separately

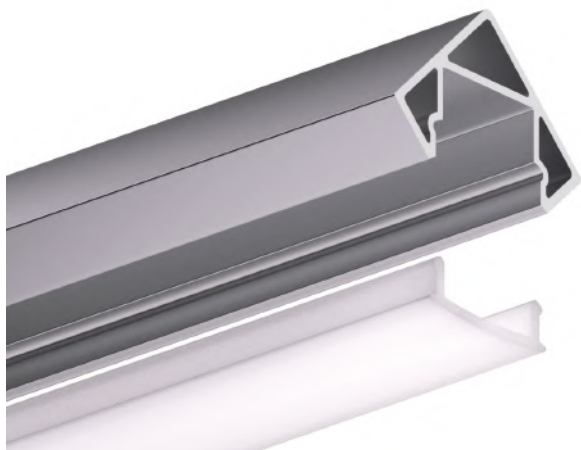


ARMOR SE Series
Corner Flat

Part #: UT-PR-CF-8FT

Key Features:

- Used in cove and general cabinetry
- Provides full light diffusion with UNITI LE Flex Tape 120 LED/m
- Mounting clips and end caps sold separately



ARMOR GX Series
Closet Rod

Part #: UT-PRGX-CH

Key Features:

- Used as the main hanging rod in closet
- Provides full light diffusion with UNITI LE Flex Tape 120 LED/m



For further information please contact us

www.utechnology.ca | (403) 800-3044



All Dimensions are Approximate
Please Acquire Product Sample for Precise Milling



POWER Supply

U Technology is dedicated to continuously improving LED power supply technology. Our drivers are designed to provide high quality LED power at high efficiency while supporting a wide array of dimming and control methods. This results in prolonged LED lifespan, ease-of-use and versatility. U Technology offers a variety of dimmable and non-dimmable drivers to cover virtually every possible installation requirement.



Advanced Power Supply 24W-12VDC ELA Series

Part #: UT-PS-ELA-24W-12V

Key Features:

- 120V AC Input, 1/2" NPT Hardwire
- Dimming Style: TRIAC & PWM



AC Dimmable

Advanced Power Supply 60W-12VDC ELA Series

Part #: UT-PS-ELA-60W-12V

Key Features:

- 120V AC Input, 1/2" NPT Hardwire
- Dimming Style: TRIAC & PWM



AC Dimmable

ELE Power Supply 180W-12V - 3 CHANNEL

Part #: UT-PS-ELE-180W-12V

Key Features:

- 120-277V AC Input, 1/2" NPT Hardwire
- Dimming Style: TRIAC, 0-10V, ELV, MLV & PWM



AC Dimmable

For further information please contact us

www.utechnology.ca | (403) 800-3044



Always Consult and Install According to Your Local Electrical Code

ELH Power Supply
16W-12V Hardwire

Part #: UT-PS-ELH-16W-12V

- Key Features:
- 120V AC Input, Hardwire
 - Non-Dimmable
 - Only Works with RGB & PWM
 - Junction Box is Not Included



ELH Power Supply
60W-12V Hardwire

Part #: UT-PS-ELH-60W-12V

- Key Features:
- 120V AC Input, Hardwire
 - Non-Dimmable
 - Only Works with RGB & PWM
 - Mechanically Fastened Plastic Cover
 - Junction Box is Not Included



EL Power Supply
12V-Plug-In Style

Part #: UT-PS-EL-36W-12V

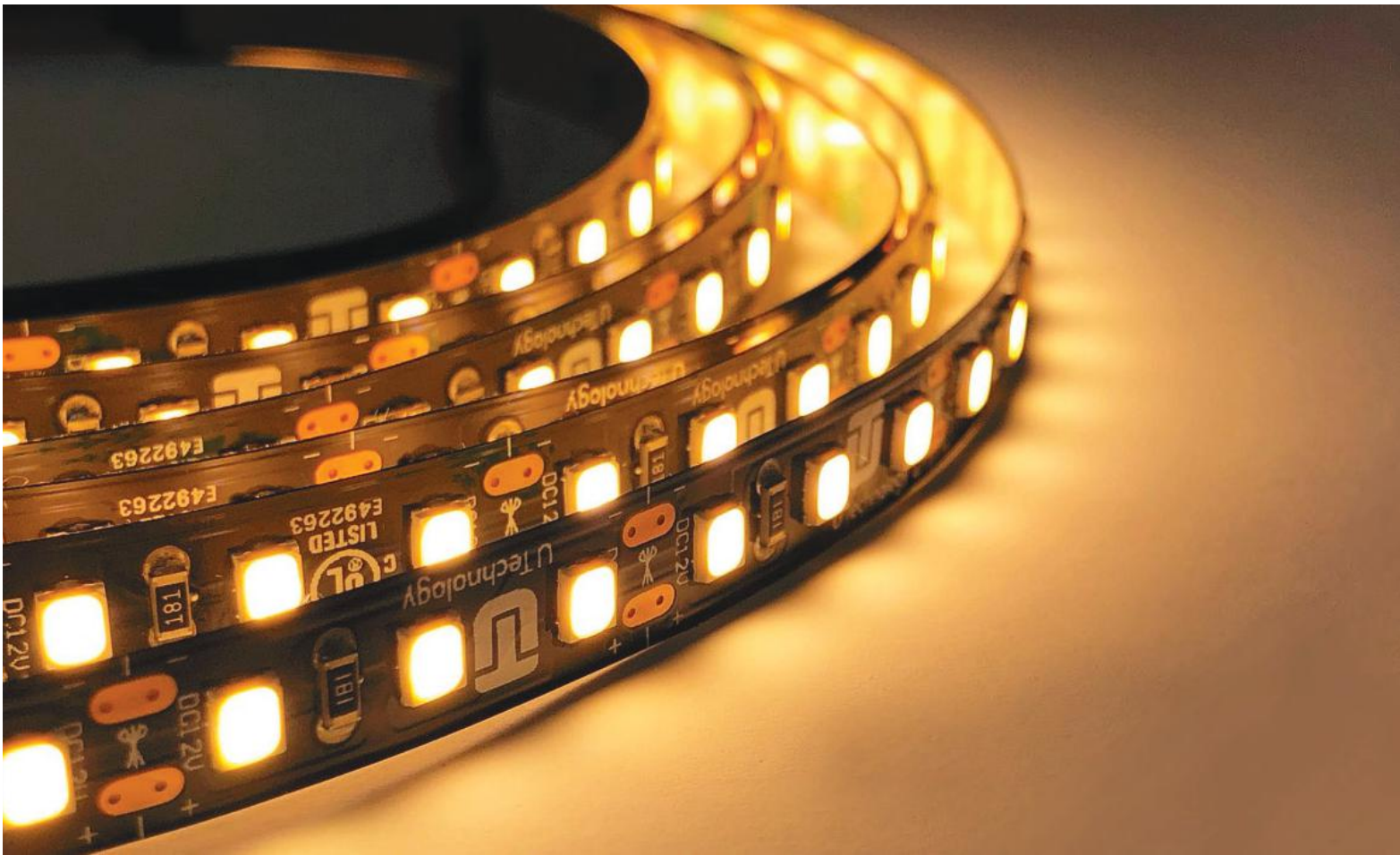
- Key Features:
- Comes in a Variety of Wattages
 - 120V AC Input. Plug in
 - Non-Dimmable
 - Only Works with RGB & PWM
 - 1 DC Output Channel
 - Junction Box is Not Included



 Always Consult and Install According to Your Local Electrical Code

Wire Gauge For Maximum 10% Voltage Drop at 12 Volt DC*			
Length (Feet)	SYSTEM LOAD		
	24W	36W	60W
	2.0 Amp	3.0 Amp	5.0 Amp
10 ft	18	16	16
15 ft	18	16	14
20 ft	18	16	14
25 ft	18	16	14
30 ft	16	14	12
40 ft	16	14	12
50 ft	16	12	
60 ft	16	12	

*For Wire Selection, always follow your local Electrical Code Requirement.
Use the Table for Reference Only.



Services and Other Product Offerings

Services:

- Engineering
- Design
- Simulation
- Project Estimation
- Training
- Custom UNITI System Assembly Site-Ready Installation and Custom Manufacturing

Other Product Offerings:

- Architectural UNITI System, ARMOR and Power Supply
- Architectural Downlight
- Architectural PXL Series Pin Light
- Integrated Solar LED Lighting
- Commercial GX ARMOR Series
- Commercial Downlight

NOTES







2050 - 2600 Portland St. SE
Calgary, AB, T2G 4M6

www.utechnology.ca

