



# CATALOG

Endless flexibility, limitless possibilities





# CATALOG

ALUMINUM HOUSING .....	3
LIGHT ENGINES .....	7
CABINET LIGHTS .....	9
DOWNLIGHTS .....	11
STEP LIGHTS .....	17
POWER SUPPLIES .....	19
SENSORS .....	27
CONTROLLERS .....	29
ACCESSORIES .....	33

U Technology is a leading manufacturer of technology-driven, custom manufactured LED lighting solutions. Specializing in low-voltage, high powered, and visually pleasing products, U Technology is at the forefront of technological innovation for both indoor and outdoor applications. Our products are carefully designed to provide endless flexibility and limitless possibilities.

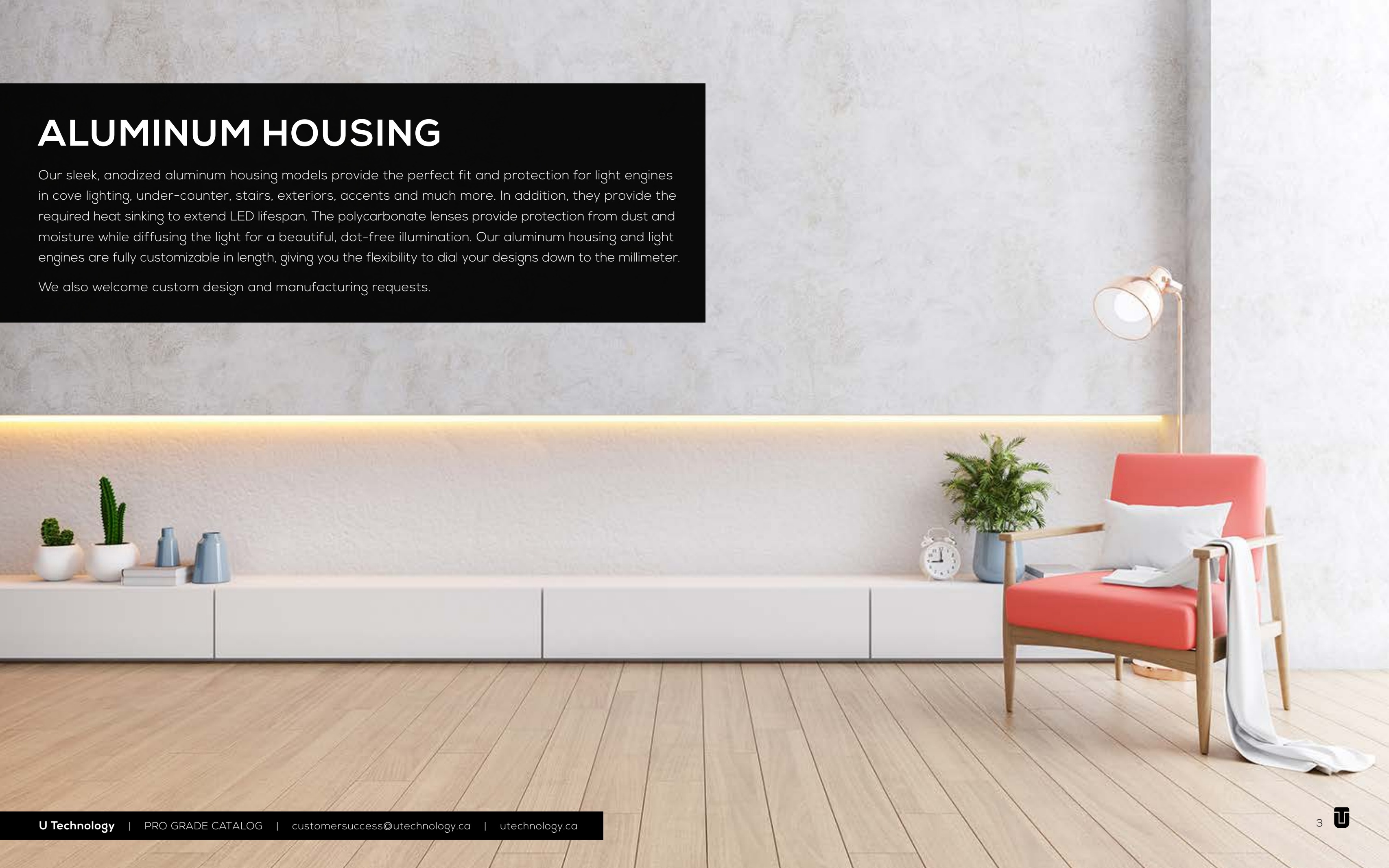
When it comes to LED lighting, one size does not fit all. Our lighting systems and custom manufacturing abilities enable clients to use our products for all their projects. We create solutions that take all aspects of the project into account, from design to maintenance and everything in between. Our team takes the time to evaluate each project and provide in-depth, customized options for your commercial spaces.





# ALUMINUM HOUSING

Our sleek, anodized aluminum housing models provide the perfect fit and protection for light engines in cove lighting, under-counter, stairs, exteriors, accents and much more. In addition, they provide the required heat sinking to extend LED lifespan. The polycarbonate lenses provide protection from dust and moisture while diffusing the light for a beautiful, dot-free illumination. Our aluminum housing and light engines are fully customizable in length, giving you the flexibility to dial your designs down to the millimeter. We also welcome custom design and manufacturing requests.



# ALUMINUM HOUSING

## ARMOR SE SERIES



### STANDARD

PART #: UT-PR-ST-8FT

Used for surface mounted applications in cabinetry, coves, stairs, toe-kicks, accents and more.



### STANDARD FLANGED

PART #: UT-PR-STFL-8FT

Used for recess mounted applications in cabinetry, coves, stairs, toe-kicks, accents and more.



### CORNER FLAT

PART #: UT-PR-CF-8FT

Used for residential and commercial in cabinetry, coves, stairs, toe-kicks, accents and more.







# ALUMINUM HOUSING

## ARMOR SE SERIES



### SLIM

PART #: UT-PR-SL-8FT

Used for low-clearance surface mounted applications in cabinetry, coves, stairs, toe-kicks, accents and more.



### SLIM FLANGED

PART #: UT-PR-SLFL-8FT

Used for low-clearance recess mounted applications in cabinetry, coves, stairs, toe-kicks, accents and more.



### COAT HANGER

PART #: UT-PR-CH-8FT

Specifically designed to illuminate closet spaces and drapery.





# LIGHT ENGINES

Our UNITI LED Light Engines are premium architectural products that are durable and built to provide beautiful, consistent, flicker-free lighting for a wide variety of high-end residential and commercial applications. Our carefully selected LEDs are designed to exceed 50,000 hours when used with our aluminum housing models and advanced power supplies. Fully compatible with our sensors, controllers, and accessories for maximum efficiency and control.

We also welcome custom design and manufacturing requests.

# LIGHT ENGINES

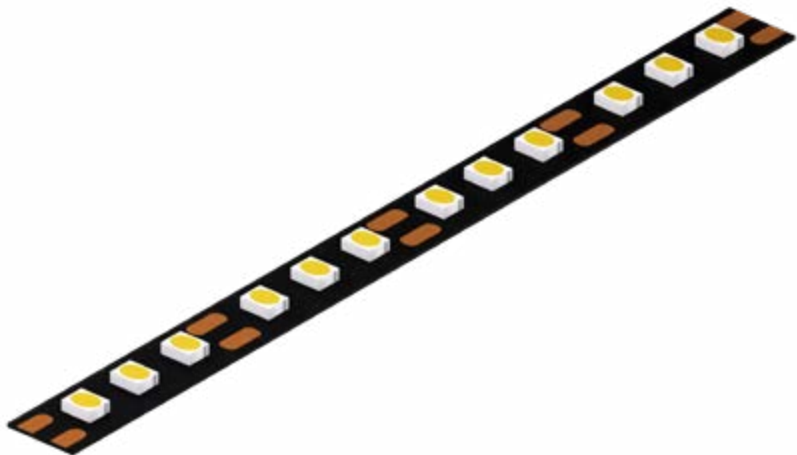
UNITI SE SERIES



## 60-12V

PART #: UT-FLSE-60-12V

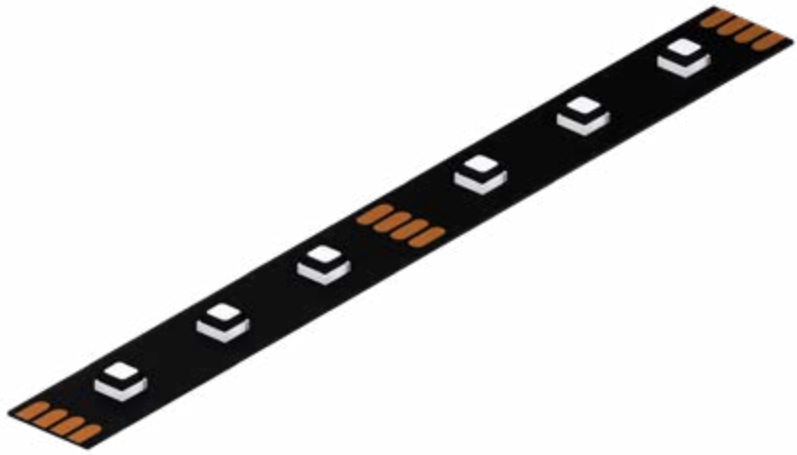
Durable light engine with 60 high-grade LEDs per meter. Available in 2700K, 3000K, 4000K, and 5000K.



## 120-12V

PART #: UT-FLSE-120-12V

Durable, high-density light engine with 120 high-grade LEDs per meter. Available in 3000K and 4000K.



## 60-12V-RGB

PART #: UT-FLLE-60-12V-RGB

Durable, full spectrum RGB light engine with 60 high-grade LEDs per meter.







# CABINET LIGHTS

Our low-profile cabinet lights are the popular options for cabinetry, shelving, stairs or other small area lighting. Our LED technology ensures the light output is uniform and consistent, with no visual hot-spotting. The lights are dimmable to 1% and their compact size makes them the ideal solution for many indoor residential and commercial applications.

We also welcome custom design and manufacturing requests.

# CABINET LIGHTS

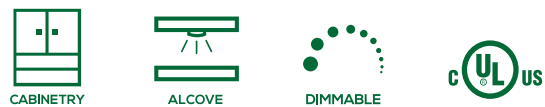
## MIKRA SERIES



### CLM

PART #: UT-CLM

Designed as a low-profile, diffused lighting solution for small area lighting applications. 120 Lumen output and a CCT of 3000K.



### CLS

PART #: UT-CLS

Provides low-profile lighting for displays, stairs, and shelving. Available in CCTs of 2700K, 3000K, and 4000K.



### CLG

PART #: UT-CLS

Ideal gimballed option for cabinetry, shelving, art lights, and other small are applications. Available in CCTs of 2700K, 3000K, and 4000K







# DOWNLIGHTS

Our downlights are designed for easy installation in both high-end residential and commercial spaces. All of our models are compact and compatible with most standard LED Triac dimmers with optics designed to reduce or eliminate glare. Highly efficient LEDs provide exceptional light output while fixtures provide a sleek and minimal look.

We also welcome custom design and manufacturing requests.



# DOWNLIGHTS

## SOLE SERIES



### LOW GLARE DOWNLIGHT

Allows for proper placement of recessed downlights for effortless new construction installation.

- LIGHT ENGINE - CCT 3000K - PART#: UT-LGD-LM-30K
- LIGHT ENGINE - CCT 3500K - PART#: UT-LGD-LM-30K
- TRIM - ROUND - WHITE - PART#: UT-LGD-R-WH
- TRIM - SQUARE - WHITE - PART#: UT-LGD-S-WH
- EXTENDABLE ARM ROUGH IN PLATE - PART#: UT-RIP-35



DOWNLIGHTS



DIMMABLE



### DL-DLG 4" | 6"

- 4" PART#: UT-DL-DLG-4
- 6" PART#: UT-DL-DLG-6

Bi-directional, recess mounted light for both residential and commercial applications.



DOWNLIGHTS



DIMMABLE



### DL-DOME 4" | 6"

- 4" PART#: UT-DL-DOME-4-R-WH-30K
- 6" PART#: UT-DL-DOME-6-R-WH-30K

Compact, low-glare, indirect light for both residential and commercial applications.



DOWNLIGHTS



INDIRECT



DIMMABLE







# DOWNLIGHTS

## SOLE SERIES



### DL-DIRG 3"

PART#: UT-DL-DIRG

Recess mounted 360° gimbal with Triac to 5% dimming capabilities. Available in 3 trim colors.



DOWNLIGHTS



DIMMABLE



### DL-US 5" | 7" | 12"

5" PART#: UT-DL-US-5

7" PART#: UT-DL-US-7

12" PART#: UT-DL-US-12

Ultra-thin surface mount with Triac to 5% dimming capabilities. Used for both residential and commercial applications.



DOWNLIGHTS



DIMMABLE



### DL-US-PIR 4"

PART#: UT-DL-US-4-PIR

Compact ultra-thin surface mount with built in motion sensor. Fits into standard 4" ceiling box.



DOWNLIGHTS



DIMMABLE



OCCUPANCY  
SENSOR







# DOWNLIGHTS

## ACCESSORIES



### ROUGH-IN PLATE

Allows for proper placement of recessed downlights for effortless new construction installation.

**3" ROUGH-IN PLATE PART#:** UT-RIP-3

**4" ROUGH-IN PLATE PART#:** UT-RIP-4

**6" ROUGH-IN PLATE PART#:** UT-RIP-6

**UNIVERSAL ROUGH-IN PLATE PART #:** UT-RIP-UNI  
(with extendable arm for 3", 4", 6" lights)



### VAPOR BARRIER

4" PART#: UT-VB-40

6" PART#: UT-VB-60

Provides air-tight seal when paired with U Technology rough-in plate. Must be stored and installed above 15°C.

### SURFACE MOUNTING

#### RETROFIT KITS:

4" HOUSING: UT-DL-US-5-RF

5" | 6" HOUSING: UT-DL-US-7-RF

#### CONVERSION TO BLACK TRIM:

4" HOUSING: UT-DL-US-5-R-BK-RING

5" | 6" HOUSING: UT-DL-US-7-R-BK-RING







## STEP LIGHTS

U Technology's LED step lighting is designed to bring efficient light to staircases, both indoors and outdoors. With aluminum housing built to last and an array of light engine options, our step lights are suitable for any residential or commercial stair project.

We also welcome custom design and manufacturing requests.

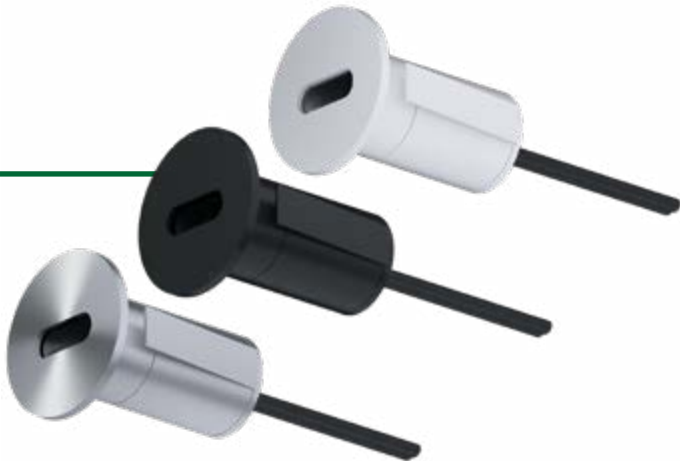
# STEP LIGHTS

## PXL SERIES

### ROUND

Tiny recessed light fixture for small spaces such as drawers, stairs, cabinets and much more.

PART#:	DESCRIPTION:
UT-PL-24V-27K	Light Engine - CCT = 2700K
UT-PL-24V-30K	Light Engine - CCT = 3000K
UT-PL-R-WH	Faceplate - Round - White
UT-PL-R-BK	Faceplate - Round - Black
UT-PL-R-SS	Faceplate - Round - Stainless Steel



### SQUARE

Tiny recessed light fixture for small spaces such as drawers, stairs, cabinets and much more.

PART#:	DESCRIPTION:
UT-PL-24V-27K	Light Engine - CCT = 2700K
UT-PL-24V-30K	Light Engine - CCT = 3000K
UT-PL-S-WH	Faceplate - Square - White
UT-PL-S-BK	Faceplate - Square - Black
UT-PL-S-SS	Faceplate - Square - Stainless Steel







# POWER SUPPLIES

At U Technology, we are dedicated to continuously improving LED power supply technology. Our power supplies are designed to provide high-quality, high-efficiency LED power while supporting a wide array of dimming and control methods. This results in prolonged LED lifespan, ease-of-use, and versatility. We offer a wide variety of dimmable and non-dimmable power supplies to cover virtually any possible installation requirement.

We also welcome custom design and manufacturing requests.

# POWER SUPPLIES

## EL SERIES



36W

PART #: UT-EL-36W-12V

Non-dimmable plug-in AC/DC driver. Works with DC controls for RGB PWM systems.



60W

PART #: UT-EL-60W-12V

Non-dimmable plug-in AC/DC driver. Works with DC controls for RGB PWM systems.







# POWER SUPPLIES

## ELH SERIES



16W

PART #: UT-PS-ELH-16W

Small, non-dimmable hard-wire AC/DC driver that fits into a 2 gang electrical box. Works with DC controls for PWM systems.



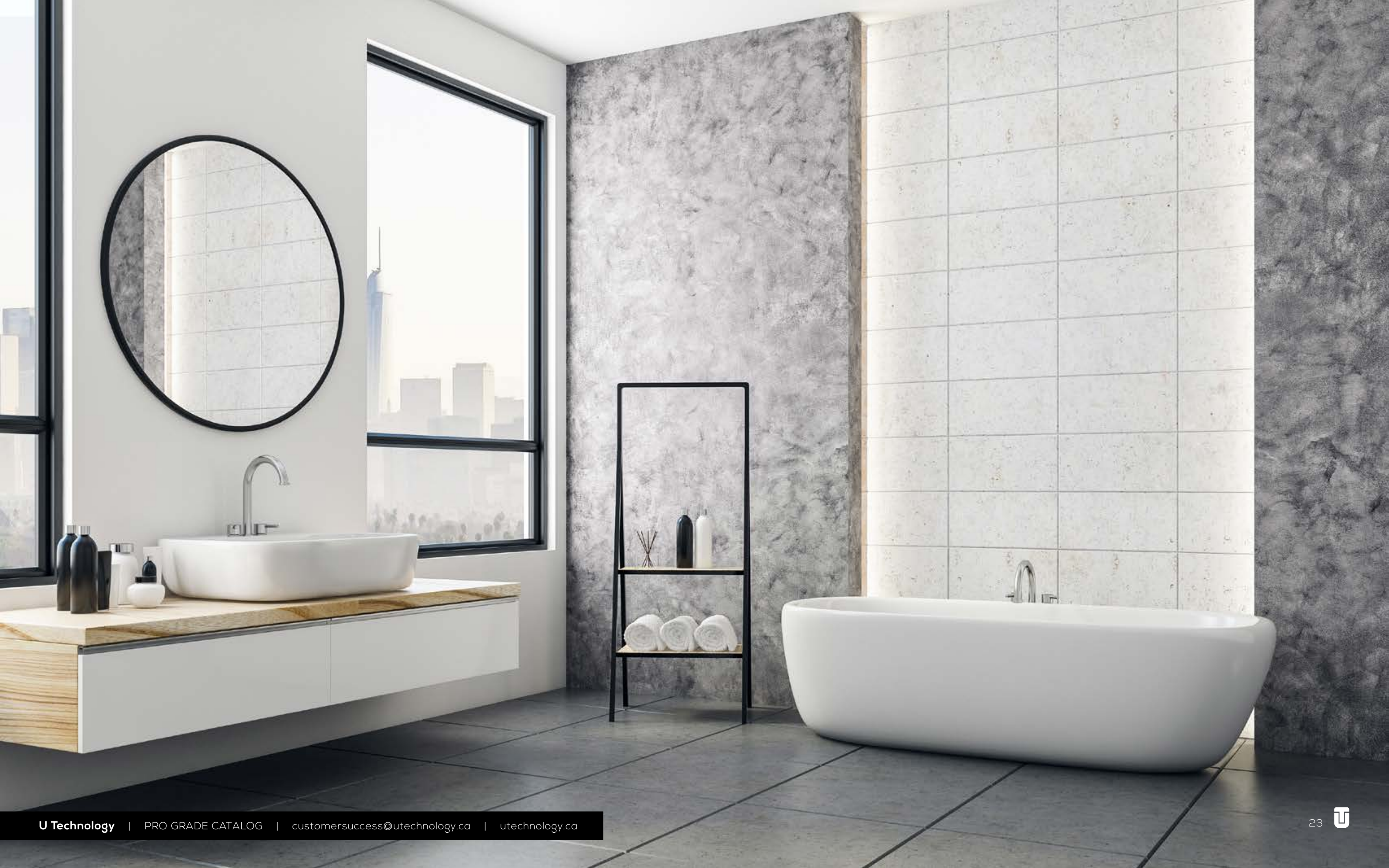
60W

PART #: UT-PS-ELH-60W-12V-MW

Non-dimmable hard wire AC/DC driver. Works with DC controls for PWM systems.







# POWER SUPPLIES

## ELA SERIES



24W

PART #: UT-PS-ELA-24W-12V

Hard wire AC/DC driver with built-in TRIAC and PWM dimming capabilities and 1/2" NPT knock-outs.



AC  DC  
Dimmable



60W

PART #: UT-PS-ELA-60W-12V

Class 2 hard wire AC/DC driver with built-in TRIAC and PWM dimming capabilities and 1/2" NPT knock-outs.



AC  DC  
Dimmable



96W

PART #: UT-PS-ELA-96W-12V

Hard wire AC/DC driver with built-in TRIAC and PWM dimming capabilities and 1/2" NPT knock-outs.



AC  DC  
Dimmable

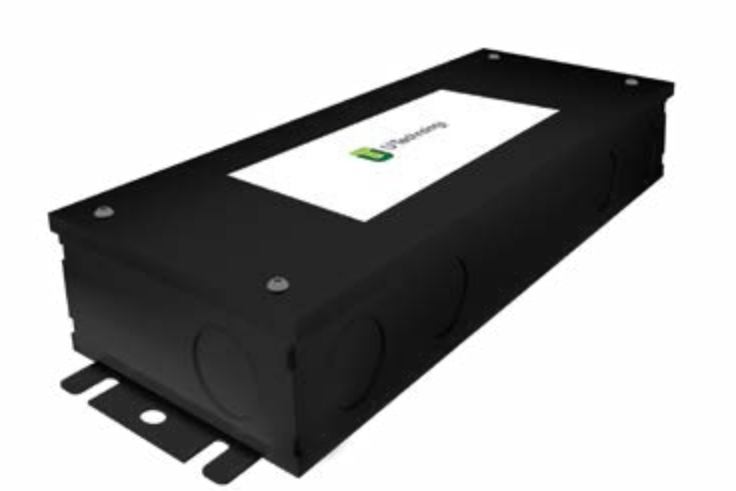






# POWER SUPPLIES

## ELE SERIES



180W

PART #: UT-PS-ELE-180W-12V

Highly efficient Class 2 hard wire AC/DC driver with built in TRIAC, 0-10V, MLV, ELV, and PWM dimming capabilities and 1/2" NPT knock-outs.







## SENSORS

Our SENSORS Series provides added functionality for your U Technology LED products. Motion and door sensors conserve energy and lengthen the lifetime of your lights by ensuring they are only on when needed, while our Touch Dimmer and Invisible Switch reduce the need for traditional light switches.

# SENSORS

## SENSOR SERIES

### SEN-DOR

PART #: UT-SEN-DOR-BK

Door sensor automatic light with 2 inch detecting distance, easy to hide in cabinet gable.



### SEN-PIR

PART #: UT-SEN-DOR-BK

Ideal for toe-kicks and low traffic areas with detection distance of 5 feet. 90 second time delay before turning off.



### SEN-TDM

PART #: UT-SEN-TDM-SL

Provides touch dimming/switchability options to dim or power lights in cabinets, work areas or around homes.



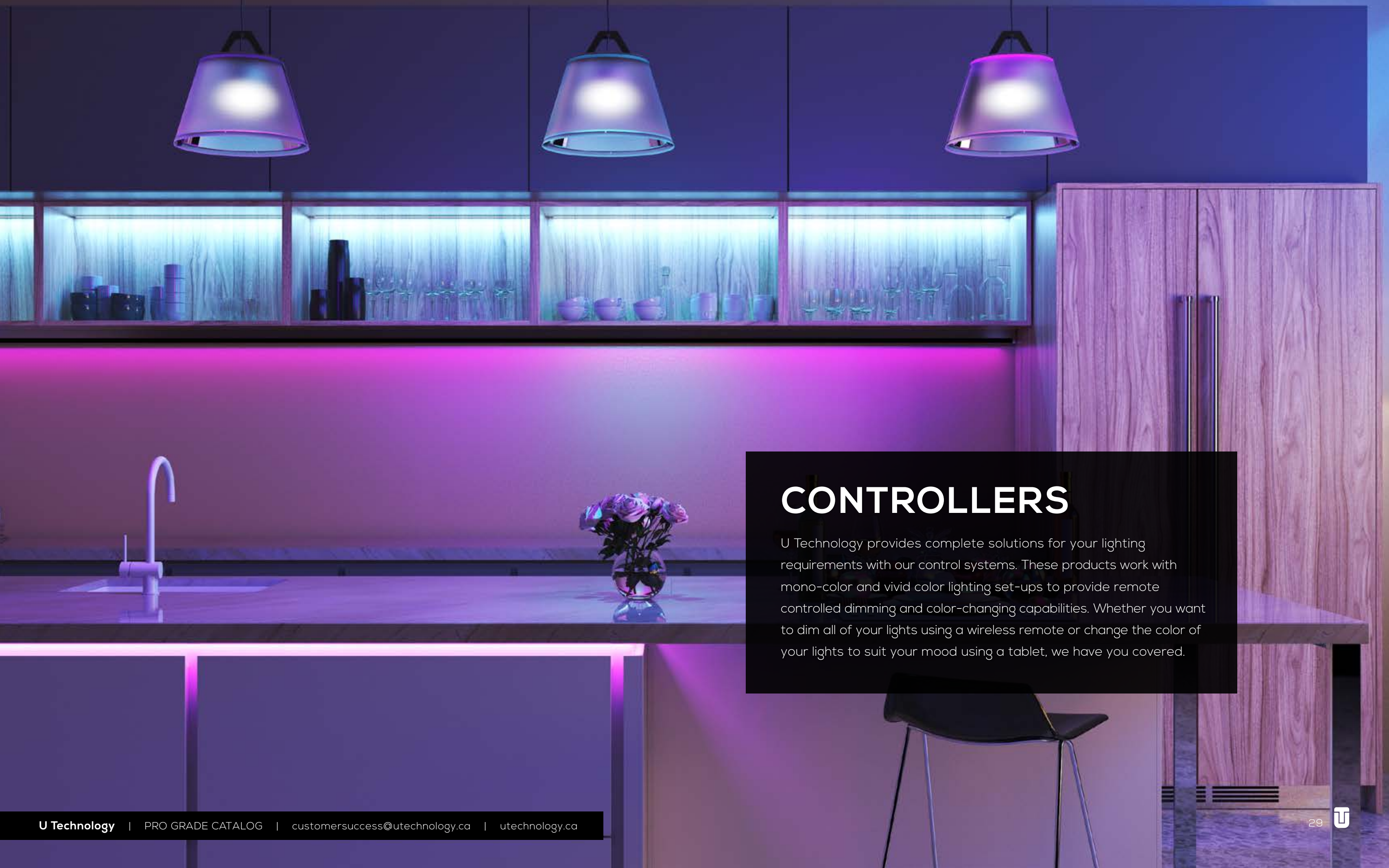
### SEN-INV

PART #: UT-SEN-INV-WH

Invisible sensor can be placed up to 1 inch under any non-metallic surface such as granite, marble or glass.







## CONTROLLERS

U Technology provides complete solutions for your lighting requirements with our control systems. These products work with mono-color and vivid color lighting set-ups to provide remote controlled dimming and color-changing capabilities. Whether you want to dim all of your lights using a wireless remote or change the color of your lights to suit your mood using a tablet, we have you covered.

# CONTROLLERS

## CONTROL BASIC SERIES



### RGB RECEIVER/ REMOTE COMBO

PART #: UT-GC-RGB-1-6A

Provides on/off, dimming, and RGB color control with the use of a wireless remote.



### TW RECEIVER/ REMOTE COMBO

PART #: UT-GC-TW-1-6A

Provides on/off, dimming, and tunable white control with the use of a wireless remote.



### RGB AMPLIFIER

PART #: UT-GC-AMP-1-6A

Used to amplify power input where required.



### RGBW AMPLIFIER

PART #: UT-GC-AMP-4

Used to amplify power input where required.







# CONTROLLERS

## GCZ CONTROL SERIES

### MONO-COLOR REMOTE

PART #: UT-GCZ-RMT-DIM4

4 zone remote for ZigBee series mono-color receivers. Magnetic mount included.



### RGB REMOTE

PART #: UT-GCZ-RMT-RGBW

4 zone remote for ZigBee series RGB/RGBW receivers with a sensitive touch pad. Magnetic mount included.



### MONO-COLOR RECEIVER

PART #: UT-GCZ-RCV-DIM4

4 channel single-color ZigBee series receiver for control with remotes and third party apps.



### RGBW RECEIVER

PART #: UT-GCZ-RCV-RGBW

4 channel RGBW ZigBee series receiver for control with remotes and third party apps.



### RGBW POWER REPEATER

PART #: UT-GCZ-AMP-4

Used to expand power output for all of our single color, tunable white, and RGBW controllers.







# ACCESSORIES

At U Technology, we are dedicated to continuously improving our products with small but meaningful efficiencies, making life easier for our clients when it comes to functionality and installation. Our accessories make U Technology products even easier to use and reduce labor costs while ensuring optimal operation.

# ACCESSORIES

## MICRO-BIND CONNECTOR SERIES

### 8MM

PART #: UT-MB-FL2BW-8MM

8mm engine-to-wire connector for 8mm UNITI light engines. Fits inside all ARMOR SE housing.



SOLDER-FREE



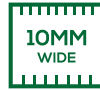
### 10MM

PART#: UT-MB-FL2BW-10MM

10mm engine-to-wire connector for 10mm UNITI light engines. Fits inside all ARMOR SE housing.



SOLDER-FREE





# ACCESSORIES

## UNITI LIGHT ENGINES

MODEL #	DESCRIPTION	COMPATIBLE WITH
UT-FL2L-8MM	Corner connector with 1-1/2" wire	UNITI SE Mono-Color Light Engine
UT-FL2FL-8MM	Direct engine-to-engine connector	UNITI SE Mono-Color Light Engine
UT-2P2BW-8MM	Weatherproof 2-pin connector	UNITI Mono-Color Light Engine
UT-FL2L-RGB	90-degree direct connector	UNITI SE RGB Light Engine
UT-FL2FL-RGB	Direct engine-to-engine connector	UNITI SE RGB Light Engine
UT-FLWFL-RGB	Engine-to-engine connector with 5" wire	UNITI SE RGB Light Engine
UT-FL2BW-RGB	Engine-to-engine connector	UNITI SE RGB Light Engine
UT-4P2BW-RGB	Weatherproof 4-pin connector	UNITI RGB Light Engine

# ACCESSORIES

## ARMOR ALUMINUM HOUSING

MODEL #	DESCRIPTION	COMPATIBLE WITH
UT-PRU-MC	Mounting clips - Universal	UT-PR-ST, UT-PR-SL, UT-PR-STFL, UT-PR-SLFL, UT-PRLE-SL Aluminum Housing
UT-PR-CF-MC	Mounting clips	UT-PR-CF Aluminum Housing
UT-PR-ST-EC-H	Endcaps with hole	UT-PR-ST Aluminum Housing
UT-PR-ST-EC-NH	Endcaps without hole	
UT-PR-SL-EC-H	Endcaps with hole	UT-PR-SL Aluminum Housing
UT-PR-SL-EC-NH	Endcaps without hole	
UT-PR-STFL-EC-H	Endcaps with hole	UT-PR-STFL Aluminum Housing
UT-PR-STFL-EC-NH	Endcaps without hole	
UT-PR-SLFL-EC-H	Endcaps with hole	UT-PR-SLFL Aluminum Housing
UT-PR-SLFL-EC-NH	Endcaps without hole	
UT-PR-CF-EC-H	Endcaps with hole	UT-PR-CF Aluminum Housing
UT-PR-CF-EC-NH	Endcaps without hole	



# CATALOG

#12 - 10221 15 Street NE Calgary, AB T3J 0T1 (by appointment only)  
utechnology.ca • customersuccess@utechnology.ca • 403-800-3044

**Copyright © U Technology Corporation**  
Images in this catalog are for inspirational purposes and are a combination of projects completed by U Technology, purchased stock photography, and 3D concept renders.