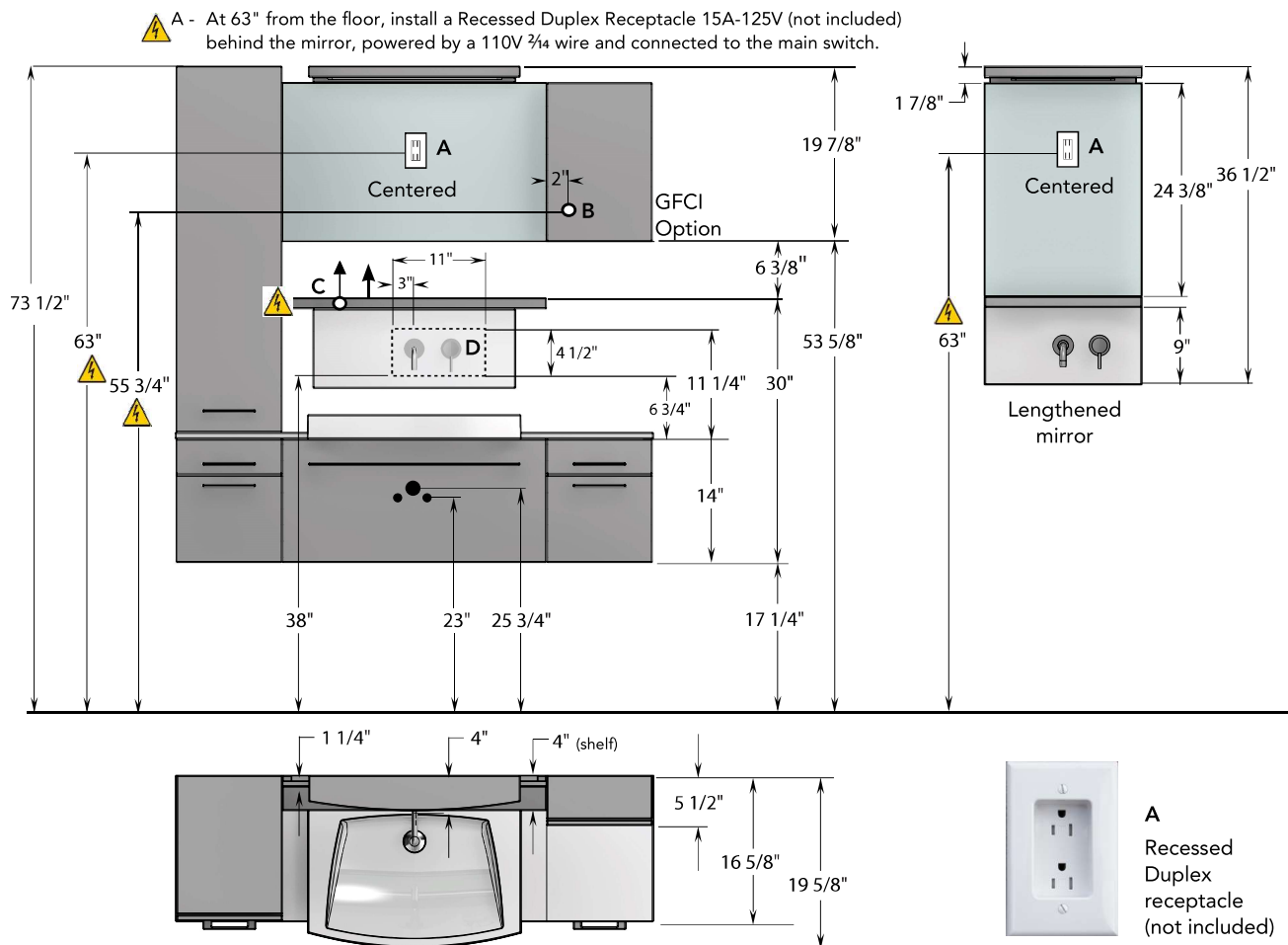


SMILE | SELECTION

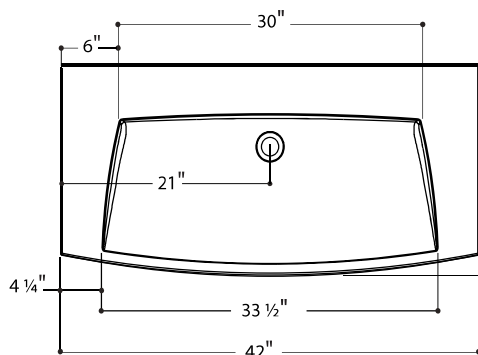
DIMENSIONS, ELECTRICAL AND PLUMBING



OPTIONAL ACCESSORIES

- A. Lighting Unit** 63" from the floor, install a Recessed Duplex Receptacle 15A-125V (not included) behind the mirror, powered by a 110V 3/4 wire and connected to the main switch.
- B. GFCI option** Bring out an independent 110V circuit.
- C. Mood lighting** The mood lighting being activated by a motion detector, you must plan another 110V wire to connect it apart from the main bathroom switch. Run the LED wire inside the wall up to the bottom of the Recessed Duplex receptacle.
- D. Optional faucet** Wall opening needed only if the optional wallmount faucet is included in the order.

42" SMILE SINK



24" SMILE SINK

