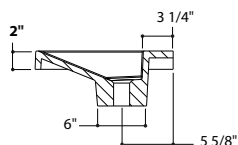
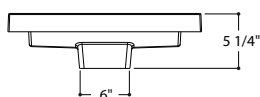
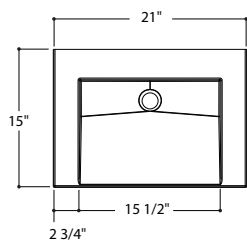
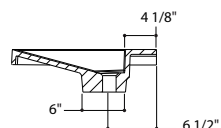
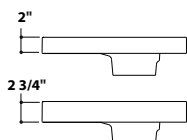
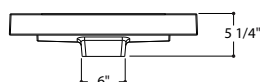
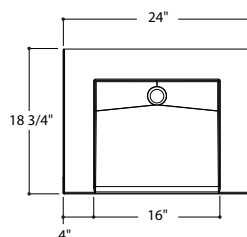


**U** to receive faucet 21 x 15

**2" DCUEE21C**

<b>MATERIAL</b>	Unimar 3.0
<b>COLOR</b>	White U-00
<b>OVERFLOW</b>	Not available
<b>DRILLING</b>	Single or 8" (on demand)
<b>FINISHED SIDES</b>	Finished on 3 sides
<b>DIMENSIONS</b>	in 21 x 15 mm 533 x 381
<b>COUNTERTOP CUTOUT</b>	in 18 x 13 mm 457 x 330
<b>APPARENT HEIGHT</b>	in 2 mm 51
<b>WATER CAPACITY</b>	1,22 gal/4,6 L
<b>WEIGHT</b>	17 lbs
<b>DRAIN</b>	Not included

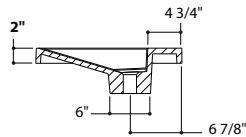
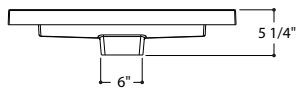
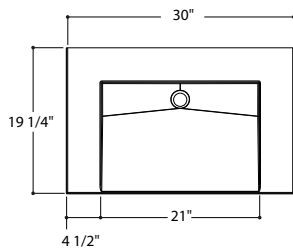
**U** to receive faucet 24 x 18 3/4

**2" XCUEE24C**  
**2 3/4" XCUEE24C**

<b>MATERIAL</b>	Unimar 3.0
<b>COLOR</b>	White U-00
<b>OVERFLOW</b>	Not available
<b>DRILLING</b>	Single or 8" (on demand)
<b>FINISHED SIDES</b>	Finished on 3 sides
<b>DIMENSIONS</b>	in 24 x 18 3/4 mm 610 x 476
<b>COUNTERTOP CUTOUT</b>	in 18 x 17 mm 457 x 432
<b>APPARENT HEIGHT</b>	in 2 or 2 3/4 mm 51 or 70
<b>WATER CAPACITY</b>	1,4 gal/5,3 L
<b>WEIGHT</b>	21,1 lbs (2") - 22,4 lbs (2 3/4")
<b>DRAIN</b>	Not included

U to receive faucet 30 x 19 ¼



2"



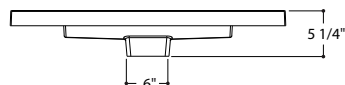
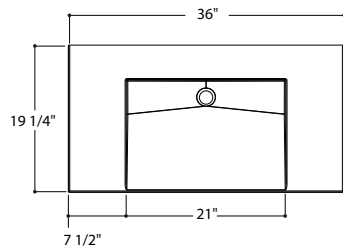
## 2" DCUCL30C

<b>MATERIAL</b>	Unimar 3.0
<b>COLOR</b>	White U-00
<b>OVERFLOW</b>	Not available
<b>DRILLING</b>	Single or 8" (on demand)
<b>FINISHED SIDES</b>	Finished on 3 sides
<b>DIMENSIONS</b>	in 30 x 19 ¼ mm 762 x 489
<b>COUNTERTOP CUTOUT</b>	in 24 x 17 mm 610 x 432
<b>APPARENT HEIGHT</b>	in 2 mm 51
<b>WATER CAPACITY</b>	1,96 gal/7,3 L
<b>WEIGHT</b>	23,3 lbs
<b>DRAIN</b>	Not included

U to receive faucet 36 x 19 ¼

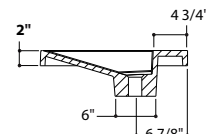


2"



### IMPORTANT!

U sink must be supported on all 4 sides (front, back, sides), otherwise, it may bend at the center.



## 2" DCUCL36C

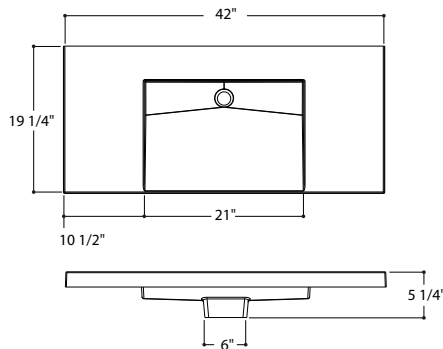
<b>MATERIAL</b>	Unimar 3.0
<b>COLOR</b>	White U-00
<b>OVERFLOW</b>	Not available
<b>DRILLING</b>	Single or 8" (on demand)
<b>FINISHED SIDES</b>	Finished on 3 sides
<b>DIMENSIONS</b>	in 36 x 19 ¼ mm 914 x 489
<b>COUNTERTOP CUTOUT</b>	in 24 x 17 mm 610 x 432
<b>APPARENT HEIGHT</b>	in 2 mm 51
<b>WATER CAPACITY</b>	1,96 gal/7,3 L
<b>WEIGHT</b>	30 lbs
<b>DRAIN</b>	Not included

U to receive faucet 42 x 19 ¼

**2" DCUCL42C**

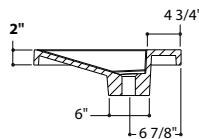


2"



**IMPORTANT!**

U sink must be supported on all 4 sides (front, back, sides), otherwise, it may bend at the center.



<b>MATERIAL</b>	Unimar 3.0
<b>COLOR</b>	White U-00
<b>OVERFLOW</b>	Not available
<b>DRILLING</b>	Single or 8" (on demand)
<b>FINISHED SIDES</b>	Finished on 3 sides
<b>DIMENSIONS</b>	in 42 x 19 ¼ mm 1067 x 489
<b>COUNTERTOP CUTOUT</b>	in 24 x 17 mm 610 x 432.
<b>APPARENT HEIGHT</b>	in 2 mm 51
<b>WATER CAPACITY</b>	1,96 gal/7,3 L
<b>WEIGHT</b>	33,6 lbs
<b>DRAIN</b>	Not included

U to receive faucet 42 x 18 ¾ LARGE BOWL

**2" XCUEE42C**  
**2 ¾" XCUEE42C**



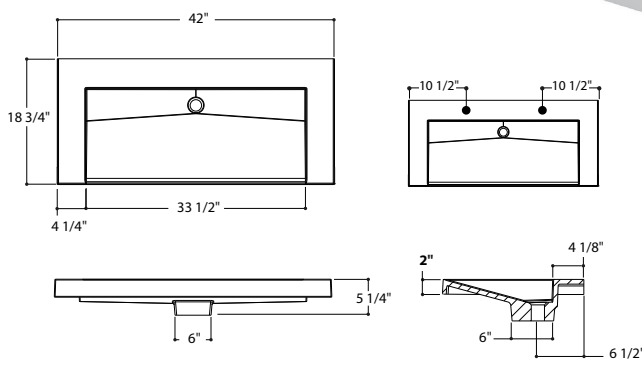
2"

**IMPORTANT!**

U sink must be supported on all 4 sides (front, back, sides), otherwise, it may bend at the center.



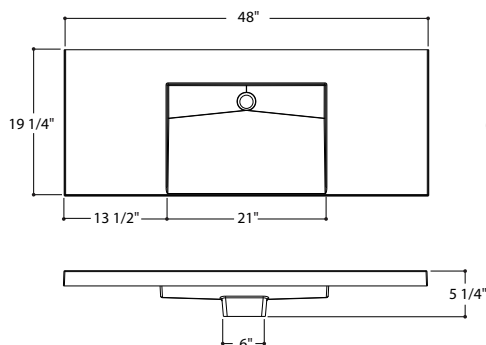
2 ¾"



<b>MATERIAL</b>	Unimar 3.0
<b>COLOR</b>	White U-00
<b>OVERFLOW</b>	Not available
<b>DRILLING</b>	For 1 or 2 faucets, single or 8" (on demand)
<b>FINISHED SIDES</b>	Finished on 3 sides
<b>DIMENSIONS</b>	in 42 x 18 ¾ mm 1067 x 476
<b>COUNTERTOP CUTOUT</b>	in 36 x 17 mm 914 x 432
<b>APPARENT HEIGHT</b>	in 2 or 2 ¾ mm 51 or 70
<b>WATER CAPACITY</b>	3 gal/11,6 L
<b>WEIGHT</b>	32,7 lbs (2") - 34,4 lbs (2 ¾")
<b>DRAIN</b>	Not included

U to receive faucet 48 x 19 ¼

## 2" DCUCL48C



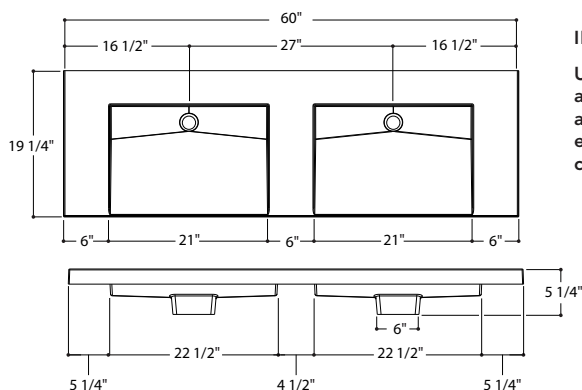
### IMPORTANT!

U sink must be supported on all 4 sides (front, back, sides), otherwise, it may bend at the center.

<b>MATERIAL</b>	Unimar 3.0
<b>COLOR</b>	White U-00
<b>OVERFLOW</b>	Not available
<b>DRILLING</b>	Single or 8" (on demand)
<b>FINISHED SIDES</b>	Finished on 3 sides
<b>DIMENSIONS</b>	in 48 x 19 ¼ mm 1220 x 489
<b>COUNTERTOP CUTOUT</b>	in 24 x 17 mm 610 x 432
<b>APPARENT HEIGHT</b>	in 2 mm 51
<b>WATER CAPACITY</b>	1,96 gal/7,3 L
<b>WEIGHT</b>	37,7 lbs
<b>DRAIN</b>	Not included

U to receive faucet 60 x 19 ¼

## 2" DCUCL60C



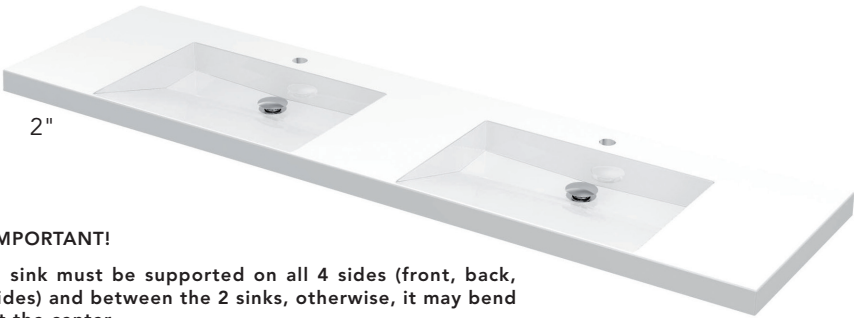
### IMPORTANT!

U sink must be supported on all 4 sides (front, back, sides) and between the 2 sinks, otherwise, it may bend at the center.

<b>MATERIAL</b>	Unimar 3.0
<b>COLOR</b>	White U-00
<b>OVERFLOW</b>	Not available
<b>DRILLING</b>	Single or 8" (on demand)
<b>FINISHED SIDES</b>	Finished on 3 sides
<b>DIMENSIONS</b>	in 60 x 19 ¼ mm 1524 x 489
<b>COUNTERTOP CUTOUT</b>	in 51 x 17 mm 1295 x 432
<b>APPARENT HEIGHT</b>	in 2 mm 51
<b>WATER CAPACITY</b>	1,96 gal/7,3 L
<b>WEIGHT</b>	50 lbs
<b>DRAIN</b>	Not included

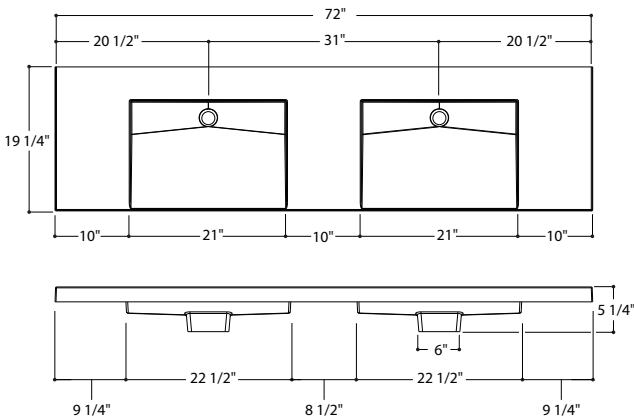
U to receive faucet 72 x 19 ¼

2" DCUCL72C



**IMPORTANT!**

U sink must be supported on all 4 sides (front, back, sides) and between the 2 sinks, otherwise, it may bend at the center.



MATERIAL	Unimar 3.0
COLOR	White U-00
OVERFLOW	Not available
DRILLING	Single or 8" (on demand)
FINISHED SIDES	Finished on 3 sides
DIMENSIONS	in 72 x 19 ¼ mm 1829 x 489
COUNTERTOP CUTOUT	in 55 x 17 mm 1397 x 432
APPARENT HEIGHT	in 2 mm 51
WATER CAPACITY	1,96 gal/7,3 L
WEIGHT	62 lbs
DRAIN	Not included

