

Installation Instructions

for use by heating contractor

VIESSMANN

Replacement of Control Console, Part No. 7826 987, 7826 988

for Vitodens 100-WB1A

Please file in Service Binder

Safety and Installation Requirements

Please ensure that these instructions are read and understood before commencing installation. Failure to comply with the instructions listed below can cause **product/property damage, severe personal injury, and/or loss of life.**

Working on the equipment

The installation, adjustment, service, and maintenance of this product must be done by a **licensed professional heating contractor** who is qualified and experienced in the installation, service, and maintenance of hot water boilers. There are no user serviceable parts on the boiler, burner, or control.

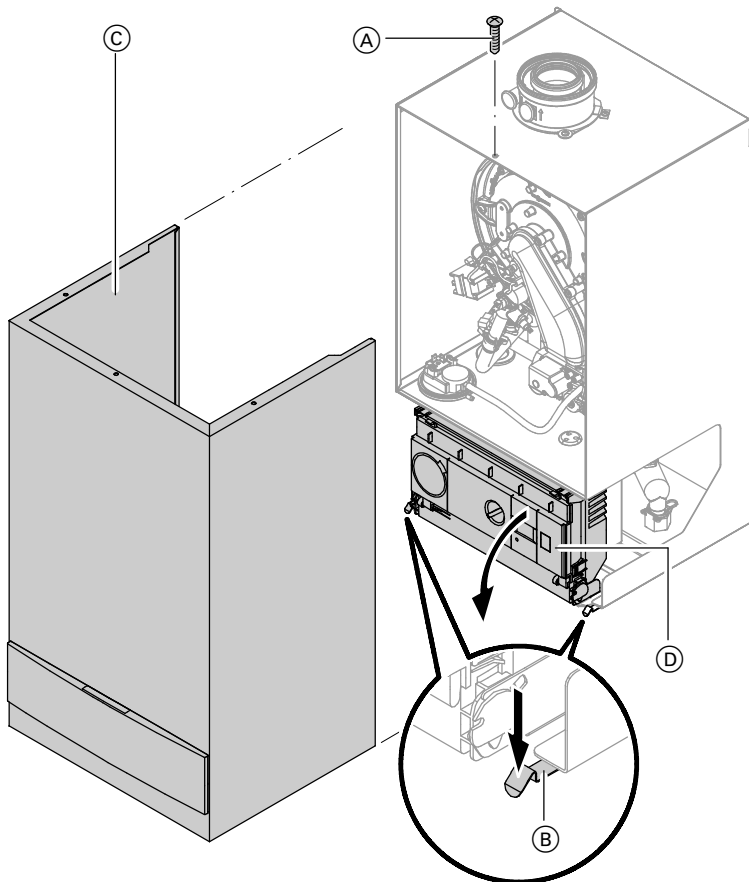
Ensure **main power** supply to equipment, the heating system, and all external controls has been **deactivated**. **Close main gas supply valve.** Take precautions in both instances to avoid accidental activation of power during service work.

It is not permissible to perform service work on any component parts ensuring safe operation of the heating system. When replacing parts, use original Viessmann or Viessmann approved replacement parts.



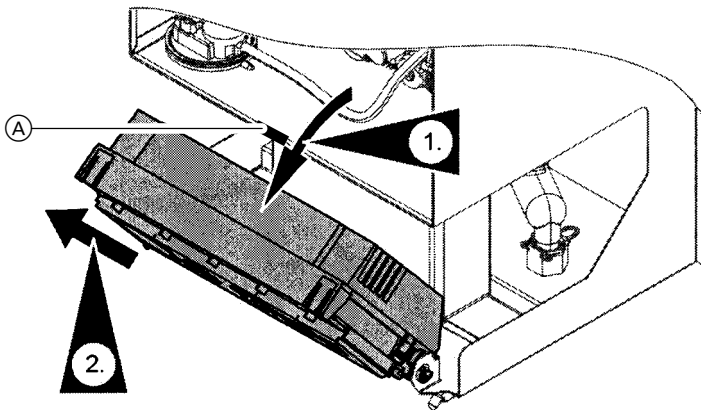
Ensure that the Vitodens 100 Service Instructions are referenced.

Remove front cover panel and expose control



1. Remove the screw at the top of boiler (A).
2. Press down on springs at bottom of boiler (B) and remove the front enclosure panel (C).
3. Flip control console down (D).

Removing the control unit



1. Flip control unit down and out towards you. The control unit is held in place with a spring loaded clip (A).

2. Slide unit to the left to remove.

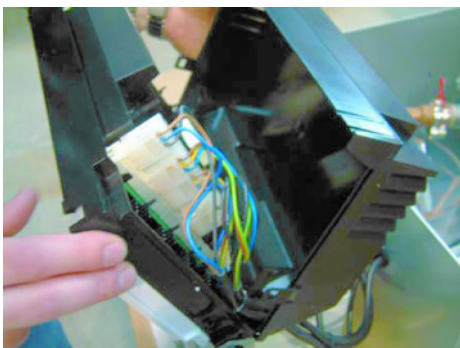
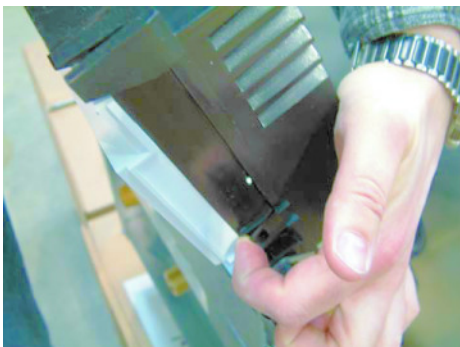
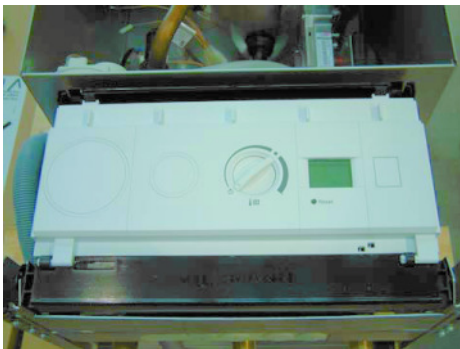
IMPORTANT

The control unit has labels and stickers containing important information. Read and follow their respective instructions.

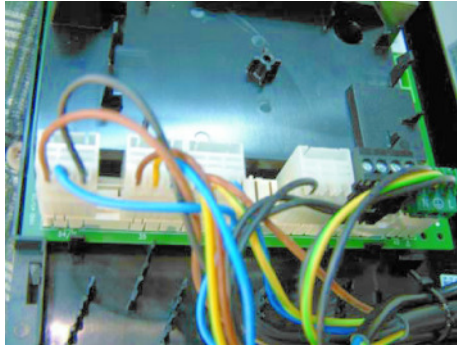
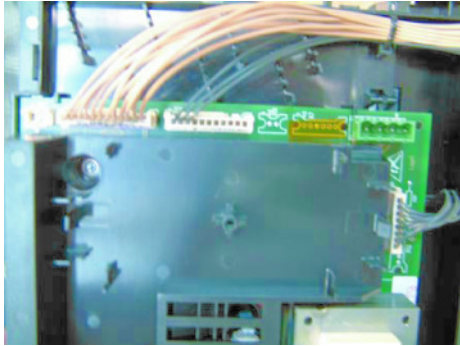
3. Tilt down the control to remove back cover (shield).

4. Release tabs on both sides of the console.

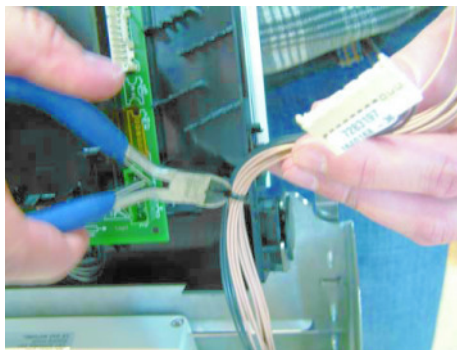
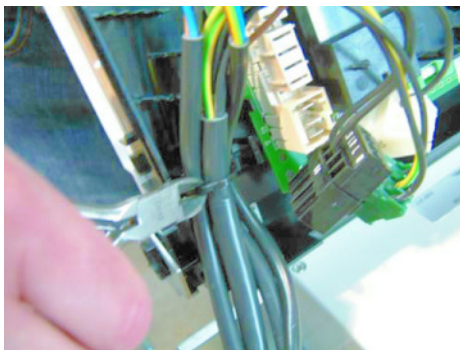
5. Expose wiring connectors.



Removing the control unit *(continued)*



6. Remove connectors.



7. Cut cable tie from the base.

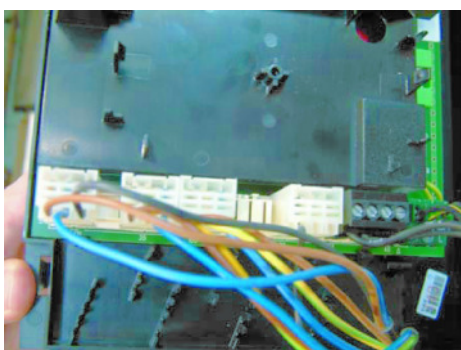


8. Remove complete control console from the base (left side first).

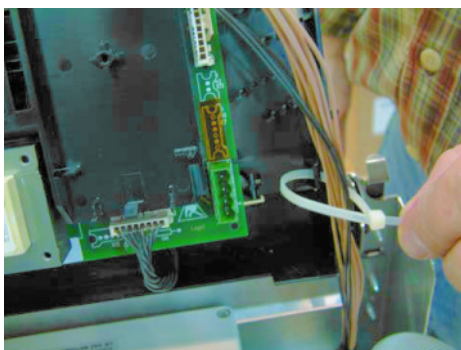
Installation



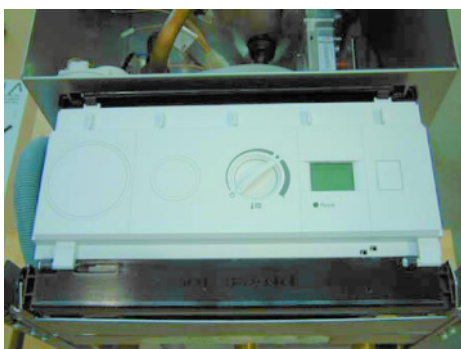
1. Install new control (starting from right side).



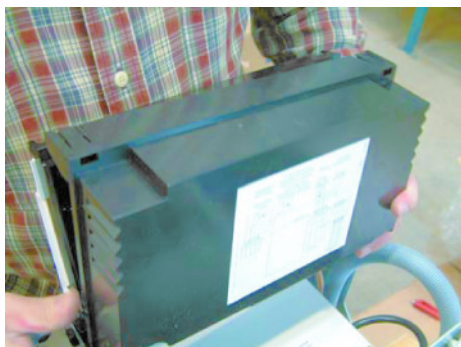
2. Reconnect all wiring harnesses (connectors are numbered which correspond to the numbers printed on the circuit board).



3. Use two cable ties (field supplied) to secure the harness to the control base.

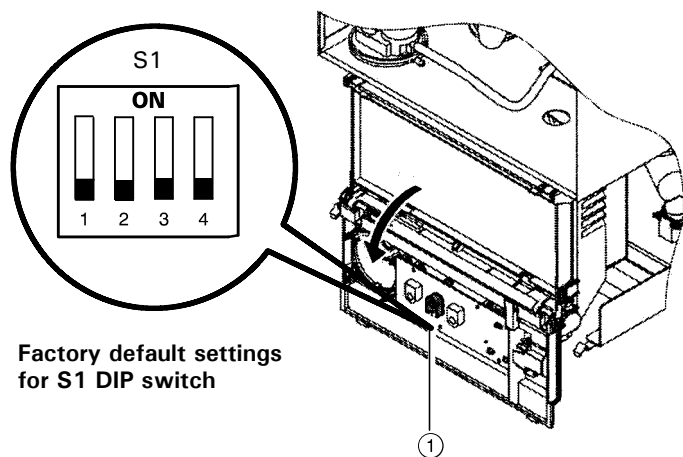


4. Reinstall back cover (shield).



5. Reinstall front cover panel.

6. Verify DIP switch settings.

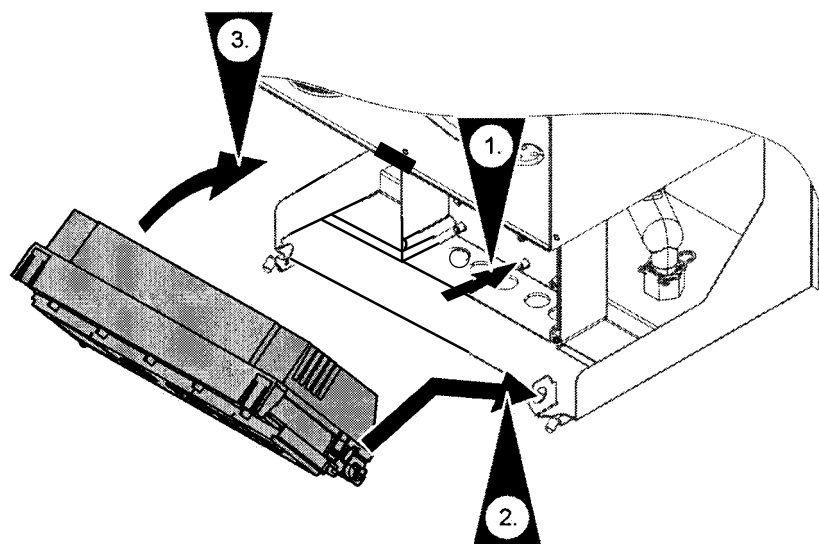


① Dip switch S1

DIP switch settings - S1

Dip switch number	Setting	Explanation
1	OFF	Pump is ON during call for heat. After call for heat (RT-Terminal) is satisfied pump post-purges for 12 minutes. After DHW/external heat demand (ST-Terminal) is satisfied, pump post-purges for 1.5 minutes.
	ON	Pump operates continuously
2	OFF	Do not adjust
3	OFF	Do not adjust
4	OFF	Do not adjust

Reinstalling the control unit

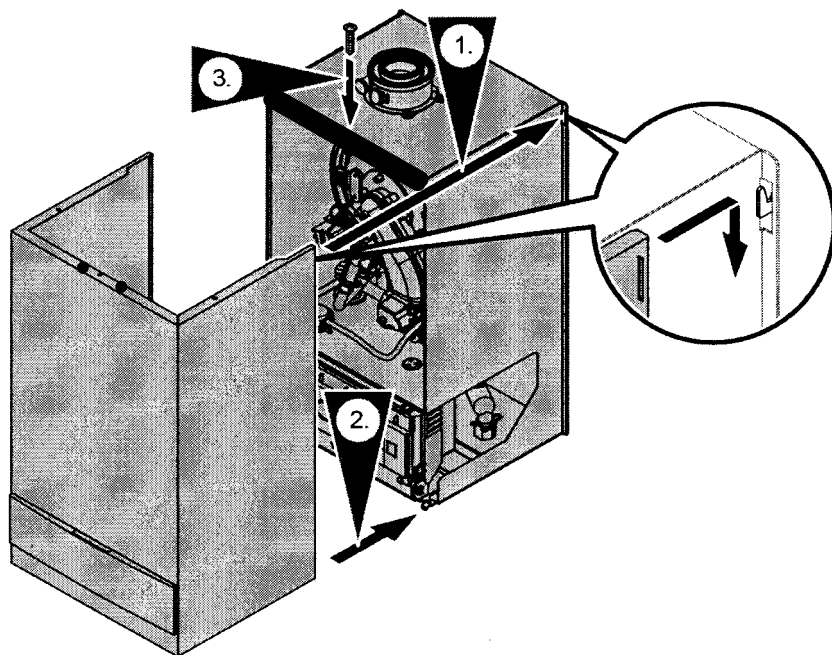


1. Hook in control unit.
2. Flip control upward and lock into position.

! CAUTION

Electrical cables may become damaged if in contact with hot components. When running and securing connecting cables on site, ensure that the maximum permissible temperatures of the cables are not exceeded.

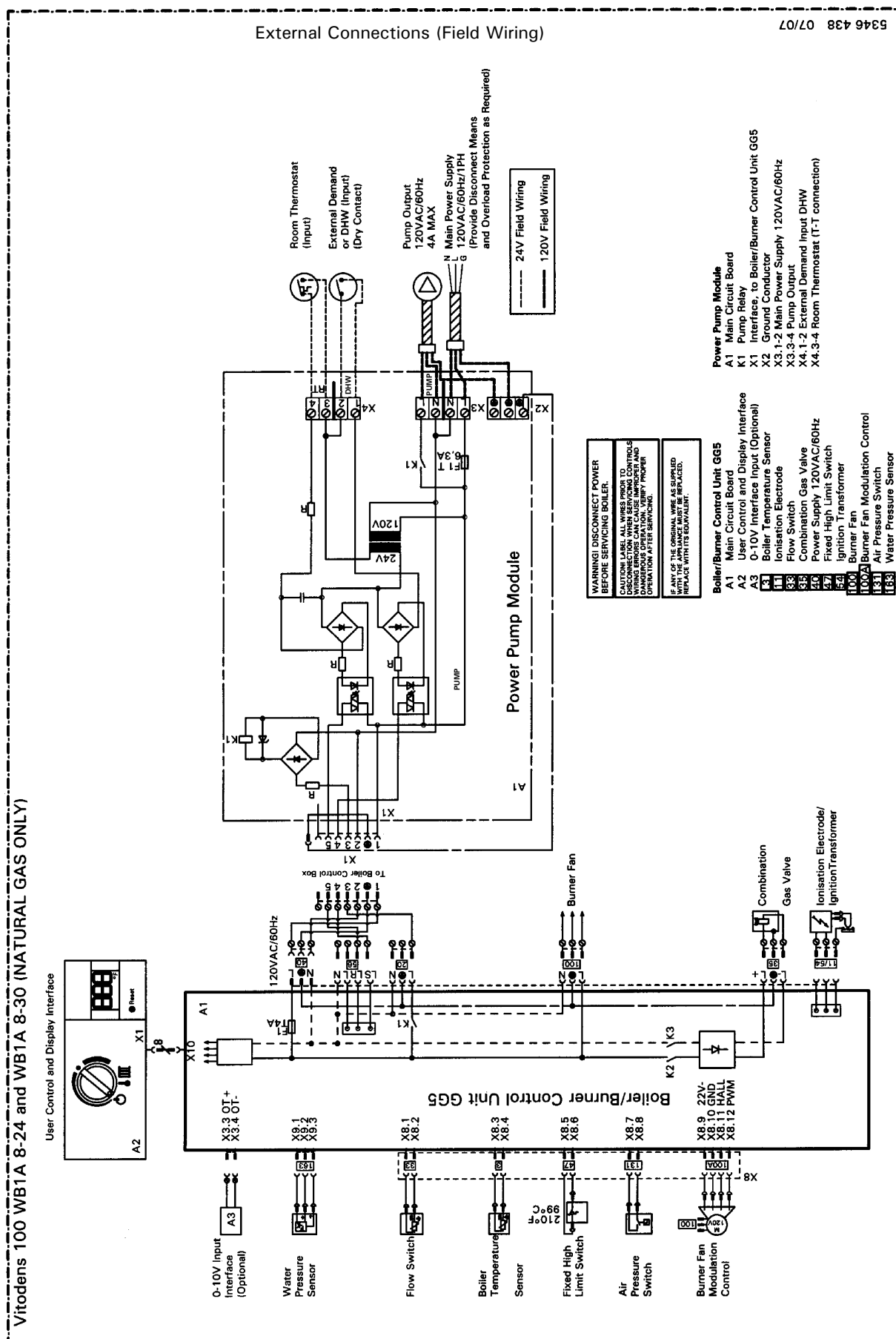
Reinstalling the front cover panel



1. Hook in front cover panel.
2. Press in bottom portion of front cover panel until it locks into position.
3. Fasten with screw at the top part of the boiler.

IMPORTANT

Read and follow, where applicable, the safety instructions of all labels and stickers attached to boiler surfaces. Do not remove any of these instructions. Contact Viessmann if any replacement labels are required.



Viessmann Manufacturing Company (U.S.) Inc.
45 Access Road
Warwick, Rhode Island • 02886 • USA
1-800-288-0667 • Fax (401) 732-0590
www.viessmann-us.com • info@viessmann-us.com

Viessmann Manufacturing Company Inc.
750 McMurray Road
Waterloo, Ontario • N2V 2G5 • Canada
1-800-387-7373 • Fax (519) 885-0887
www.viessmann.ca • info@viessmann.ca

7826 988 II v1.0

Technical information subject to change without notice.



Printed on environmentally friendly
(recycled and recyclable) paper.