

# Installation Instructions

for use by heating contractor



## Control Console

Part Number: 7841684 B2TA 19, 35 / B2TB 19, 35, 68, 125 / B2HA 19-35 / B2HB 19-35, 68-125

Part Number: 7862302 B2HB 45, 57, 160, 199

Part Number: 7862304 B2HA 80, 88, 100, 285, 311, 352

Part Number: 7849641 B2HA 112, 150, 399, 530

For use with: Vitodens 200-W B2HA/B2HB  
Vitodens 222-F B2TA/B2TB

### Safety and Installation Requirements

Please ensure that these instructions are read and understood before starting any service work. Failure to comply with these instructions may cause product/property damage, severe personal injury and/or loss of life.

### Working on the equipment

The installation, adjustment, service and maintenance of this product must be performed by a licensed professional heating contractor who is qualified and experienced in the installation, service, and maintenance of hot water boilers. There are no user serviceable parts on the boiler, burner or control.

Ensure that main power to the equipment being serviced is off.

Ensure that the main fuel supply valve to the boiler is closed.

Take precautions to avoid accidental activation of power or fuel during service work.

Do not perform service work on any component part without ensuring safe operation of the heating system. When replacing parts, use original Viessmann or Viessmann approved replacement parts.



Refer to the Installation and Service Instructions applicable to this boiler.



When handling static sensitive components, avoid damage caused by static discharge by following Electro-Static Discharge safety procedures.

## Control Console Coding Card

Boiler Model Number	Coding Card Number
Vitodens 200-W B2HA 19	7841505
Vitodens 200-W B2HA 28	7841450
Vitodens 200-W B2HA 35	7841241
Vitodens 200-W B2HA 45	7841081
Vitodens 200-W B2HA 60	7841082
Vitodens 200-W B2HA 80, 285	7841083 7865569, 7865579
Vitodens 200-W B2HA 88, 311	7865570, 7862585
Vitodens 200-W B2HA 100, 352	7841084 7865571, 7862586
Vitodens 200-W B2HA 112, 399	7862498, 7862587
Vitodens 200-W B2HA 150, 530	7865573, 7862588

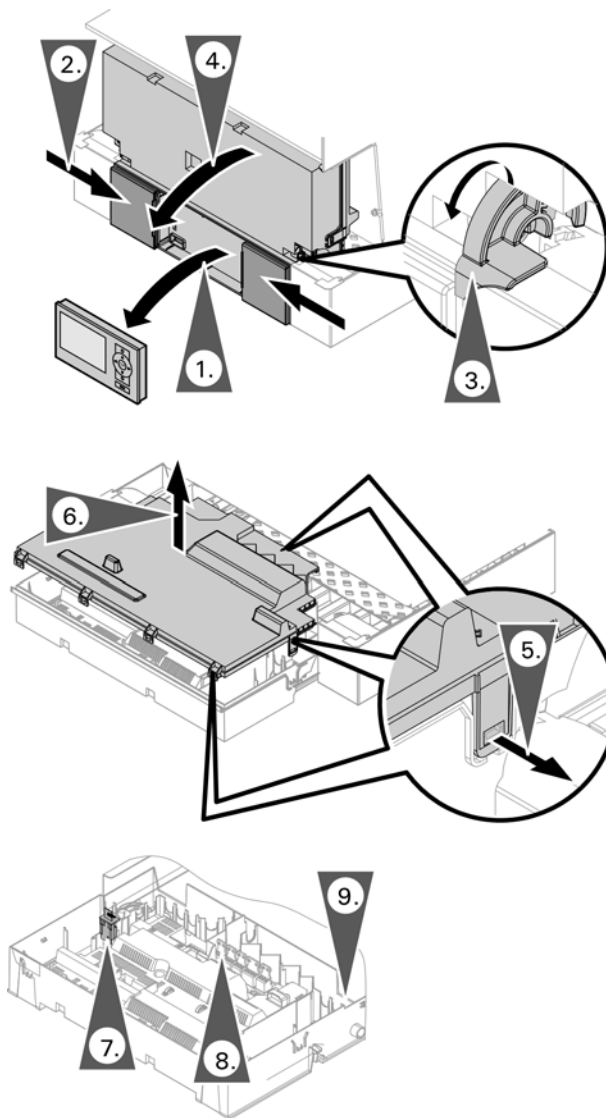
Boiler Model Number	Coding Card Number
Vitodens 222-F B2TA 19	7841685
Vitodens 222-F B2TA 35	7841686
Vitodens 222-F B2TB 19, 68	7842248, 7862581
Vitodens 222-F B2TB 35, 125	7865566, 7862582
Vitodens 200-W B2HB 19, 68	7842216, 7862578
Vitodens 200-W B2HB 26, 94	7865564, 7862579
Vitodens 200-W B2HB 35, 125	7865565, 7862580
Vitodens 200-W B2HB 45, 160	7861548, 7862583
Vitodens 200-W B2HB 57, 199	7861547, 7862584

**Note:** Altitude conversion does not require replacement of the coding card.



For altitude conversion refer to the Service Instructions applicable to this boiler.

## Replacing the Control Unit



To access the control, refer to the Installation and Service Instructions applicable to this boiler.

1. Remove the user interface programming unit and set aside for the new control.
2. Slide closed the user interface programming unit covers.
3. Turn down both locks to unlock the control unit.
4. Flip down the control unit.
5. Release the control unit cover locking tabs.
6. Remove control unit cover.
7. Remove the coding card and set aside for the new control.
8. Disconnect and tag all cables and harnesses, remove all electrical plugs and set aside for the new control.
9. Using a flat screwdriver gently press the locking device on the control pivoting mechanism and remove the control.
10. Install the new control and reassemble in reverse order.
11. Verify the coding card part number with the coding card table on page 1.
12. Reprogram the new control.

Printed on environmentally friendly  
(recycled and recyclable) paper.



Technical information subject to change without notice.

## Reprogram the New Control to the Existing Heating System

Group	Coding Address
General	00, 33, 34, 51, 53
Boiler	31
DHW	5b
Solar	02



Refer to the Service Instructions.

1. Press OK and simultaneously for approx. 4 sec.
2. Select "Coding Level 1".
3. Select "Factory Default Setting".
4. Select "Yes".
5. Press to go out of the service function.

Viessmann Manufacturing Company Inc.  
750 McMurray Road  
Waterloo, Ontario • N2V 2G5 • Canada  
TechInfo Line 1-888-484-8643  
1-800-387-7373 • Fax (519) 885-0887  
www.viessmann.ca • info@viessmann.ca

Viessmann Manufacturing Company (U.S.) Inc.  
45 Access Road  
Warwick, Rhode Island • 02886 • USA  
TechInfo Line 1-888-484-8643  
1-800-288-0667 • Fax (401) 732-0590  
www.viessmann-us.com • info@viessmann-us.com