

Project
Type
Date
Cat #

Application Features

Specification-grade enclosed and gasketed IP65 luminaire. For use with indoor and outdoor applications where high-efficiency, high-performance and dust/water resistance is required. This luminaire's glass reinforced polyester housing and acrylic lens make it ideal for applications that require a high degree of ingress protection. Captive, corrosion resistant latches made of polyamide (PA) retain diffuser. For use in wet locations.



Specifications

Optical System

Standard diffuser is high-impact acrylic with textured pattern designed for high-efficiency while providing reduced glare. Smooth surface faces outwards. Optional polycarbonate diffusers are available. Optional reflectors are available in specular aluminum with a minimum reflectance of 95%. Clear polycarbonate lamp guards are available aiding in performance in cold temperature areas.

Mounting

Offset mounting pads which keep luminaire level and slightly off of the mounting surface are formed within the housing. Optional suspension set for chain mounting available.

Construction

Lightweight, impact-resistant glass-reinforced polyester housing. Holes on each end are 7/8 inch nominal diameter and are provided with two EPDM rubber caps. Diffuser flange fits into the gasketed retention slot providing a continuous seal, and is held in place with retaining latches. Continuous poured in place polyurethane gasket.

Finish

High-reflectivity coated gear tray for improved efficiency.

Electrical

Rotary lampholders ensure positive lamp retention.

Approvals

For wet locations. Meets IP65. Approved to CSA and UL standards.

Features

- Continuous poured in place gasket
- Lightweight, glass reinforced polyester and resin housing
- Available with 1, 2 or 3 lamps (T5 and T8 configurations)
- High-impact acrylic DR diffuser held with captive, corrosion resistant latches

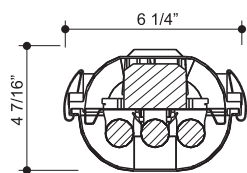
Options & Adders

- Enhanced specular aluminum reflector with a minimum reflectance of 95%
- Emergency ballast
- Clear, textured polycarbonate lens with linear ribs
- Liquid tight strain relief cord connector
- Chain sets
- Stainless Steel Clips

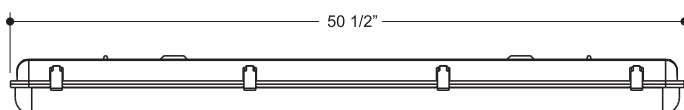
Applications

- Canopies
- Cold Storage Facilities
- Indoor Equestrian Facility
- Garage, Workshops and Parking Garages
- Dusty and Wet Environments
- May not be suitable for all environments. Consult www.viscor.com for more details.

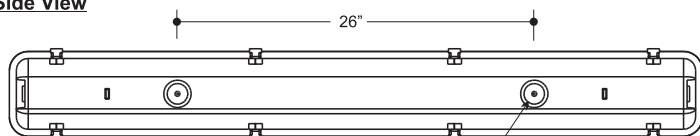
Dimensions



Cross Section



Side View



Back View

Mounting Hole Location
(2 Places)

MODEL	Width A	Depth B	Overall Length C	Mounting Location D
148	6 1/4"	4 7/16"	50 1/2"	26"
248				
348				

