

Vented Room Heaters

Enjoy instant warmth plus lower heating cost with a traditional enclosed or "fireplace-look" heater. Our glass-front "fireplace-look" or enclosed vented room heaters provide comfort for hard-to-heat areas and are designed to give you maximum efficiency, low fuel consumption and quiet operation.



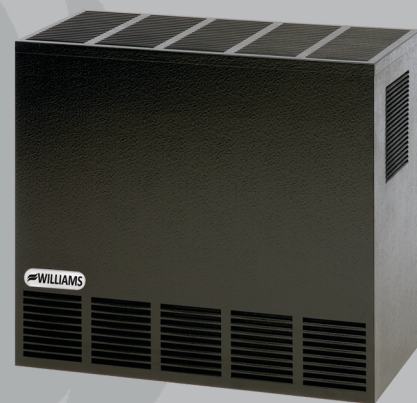
35,000 - 65,000 Btu/hr.



35,000 - 65,000 Btu/hr.

Features

- No electricity required
- "Matchless" pilot igniter
- Burners engineered for quiet operation and maximum heat efficiency
- Louvered-top design and front grille for improved heat circulation
- Factory-installed ceramic fiber logs (fireplace-look models)
- Natural or propane models (conversion kits available)
- Automatic temperature and safety controls
- Resettable vent-limit safety switch
- Thermostat included, may be wall- or cabinet-mounted



20,000 Btu/hr.

Enclosed compact model
for smaller rooms

Vented Room Heaters

| Model Number | | Btu/hr. Input | Btu/hr. Output | Efficiency Percentages | | Dimensions (Inches) | | | Shipping Weight (lbs.) |
|--------------------------------|-----------|---------------|--------------------------|------------------------|------|---------------------|--------|--------|------------------------|
| Natural | Propane | | | Thermal | AFUE | Width | Depth | Height | |
| ENCLOSED FRONT MODELS | | | ° Equipped with a Blower | | | | | | |
| 2001622A | 2001621A | 20,000 | 15,500 | 77.5 | 71.0 | 23 | 11 | 21 1/2 | 45 |
| 3501522A | 3501521A | 35,000 | 25,000 | 71.0 | 68.0 | 25 | 15 3/8 | 28 7/8 | 74 |
| °5001922A | °3501921A | 35,000 | 25,000 | 71.0 | 68.0 | 25 | 15 3/8 | 28 7/8 | 83 |
| 5001522A | 5001521A | 50,000 | 34,500 | 69.0 | 68.0 | 30 | 16 | 32 7/8 | 103 |
| °5001922A | °5001921A | 50,000 | 34,500 | 69.0 | 68.0 | 30 | 16 | 32 7/8 | 112 |
| 6501522A | 6501521A | 65,000 | 47,000 | 72.0 | 70.0 | 34 | 19 5/8 | 32 7/8 | 128 |
| °6501922A | °6501921A | 65,000 | 47,000 | 72.0 | 70.0 | 34 | 19 5/8 | 32 7/8 | 137 |
| GLASS FRONT "FIREPLACE" MODELS | | | ° Equipped with a Blower | | | | | | |
| 3502522A | 3502521A | 35,000 | 25,000 | 71.0 | 68.0 | 25 | 15 3/8 | 28 7/8 | 81 |
| °3502922A | °3502921A | 35,000 | 25,000 | 71.0 | 68.0 | 25 | 15 3/8 | 28 7/8 | 90 |
| 5002522A | 5002521A | 50,000 | 34,500 | 69.0 | 68.0 | 30 | 16 | 32 7/8 | 108 |
| °5002922A | °5002921A | 50,000 | 34,500 | 69.0 | 68.0 | 30 | 16 | 32 7/8 | 117 |
| 6502522A | 6502521A | 65,000 | 47,000 | 72.0 | 70.0 | 34 | 19 5/8 | 32 7/8 | 135 |
| °6502922A | °6502921A | 65,000 | 47,000 | 72.0 | 70.0 | 34 | 19 5/8 | 32 7/8 | 144 |

* Elevation rating from sea level to 2,000'

Higher altitude models are available

1/2" Gas Connection

FEATURES

"Matchless" Pilot Igniter

All models include a "matchless" pilot igniter that assures convenient pilot lighting without matches.

Automatic Thermostat

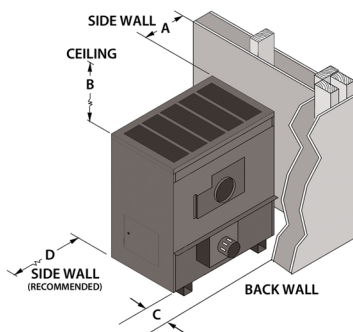
No Electricity Required - All models are equipped with a self-generating millivolt thermostat that may be wall- or cabinet-mounted. All models feature resettable vent-limit safety switch as standard equipment.

Contemporary Finish

Black, powder-coat, heat-resistant finish to compliment any décor.

Interior Furnaces Clearances

| Model | A | B | C | D |
|----------------------|----|-----|----|-----|
| 200 Series | 2" | 36" | 3" | 24" |
| 350, 500, 650 Series | 6" | 57" | 6" | 24" |



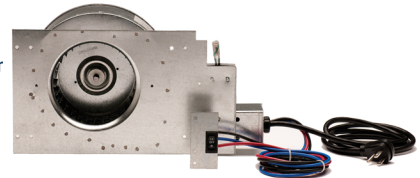
Scan for more information on Williams' products



ACCESSORIES

Blower

Model 2102 A quiet, heavy-duty blower is available for larger rooms where faster heat circulation is desired. 150 CFM, 120V. Shipping weight 9 lbs.



Vent Collars

Contemporary black color to match the heater with a scratch-resistant powder-coat finish.

Model 9102 for 3" vents. Shipping weight 1 lbs.

Model 9104 for 4" vents. Shipping weight 1 lbs.

Model 9105 for 5" vents. Shipping weight 1 lbs.

Floorboards

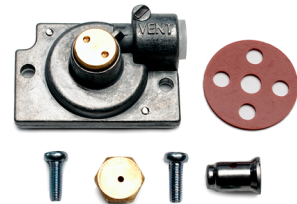
Contemporary black color to match the heater with scratch-resistant powder-coat finish.

Model 4163 for 50,000 and 65,000 Btu/hr. models. (Oversized) shipping weight 16 lbs.

Model 4167 for 20,000 and 35,000 Btu/hr. models. (Oversized) shipping weight 10 lbs.

Conversion Kits

| Model Series | Natural to Propane | Propane to Natural |
|--------------|--------------------|--------------------|
| 200 Series | 8945 | 8949 |
| 350 Series | 8946 | 8950 |
| 500 Series | 8947 | 8951 |
| 650 Series | 8948 | 8952 |



IMPORTANT

- Read owner's manual before using/installing.
- Photographs are representative only.
- Check local codes and ordinances for permitted uses.
- Consult installation manual for clearances prior to installation.
- We reserve the right to amend product specifications without notice.
- Installation and servicing recommended by a qualified service person.
- Please read the warranty for any limitations of disclaimers.
- Combustion chamber carries a 10-year limited warranty. All other parts carry a one-year limited warranty.
- Venting must comply with the "Venting and Chimney Requirements" section of the instruction manual.
- Massachusetts Approval G3-0816-23.

WILLIAMS
Comfort Products

facebook.com/WilliamsProducts • linkedin.com/company/williams • twitter.com/WilliamsProduct • instagram.com/williamsproducts
youtube.com/user/WilliamsProducts

© Williams Comfort Products

Printed in USA

250 West Laurel Street
Colton, California 92324 USA
T | 909.825.0993
F | 909.824.8009



Subject to Change without Notice

L1013, 10/17