

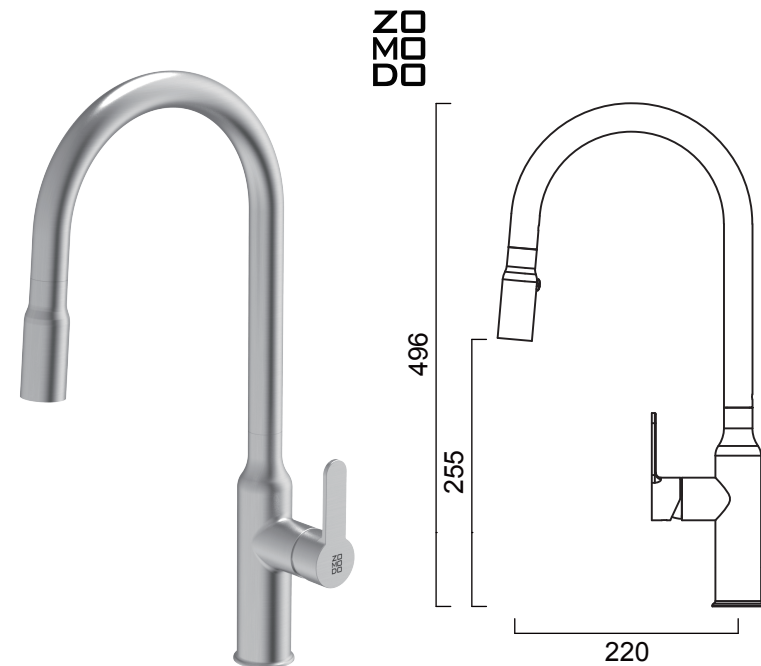
**ZO
MO
DO**

ZOMODO.CA

FAUCET INSTALLATION

**ZO
MO
DO**





Care and Maintenance

In order to ensure proper function over the lifetime of the faucet, smoothly operate the handle and pull-out hand shower during use. When installing do not over tighten the locking nut. Regularly clean the faucet with a soft, damp cloth and avoid abrasive cleaners, steel wool, and strong chemicals.

Working Specifications

Working pressure: 20-100 psi

Working temperature: 1-60°C

This faucet must be installed with isolating/wall valves in accordance with local installation codes. All ZOMODO faucets are strongly recommended to be installed by a licensed plumber. Improper installation may void the warranty.

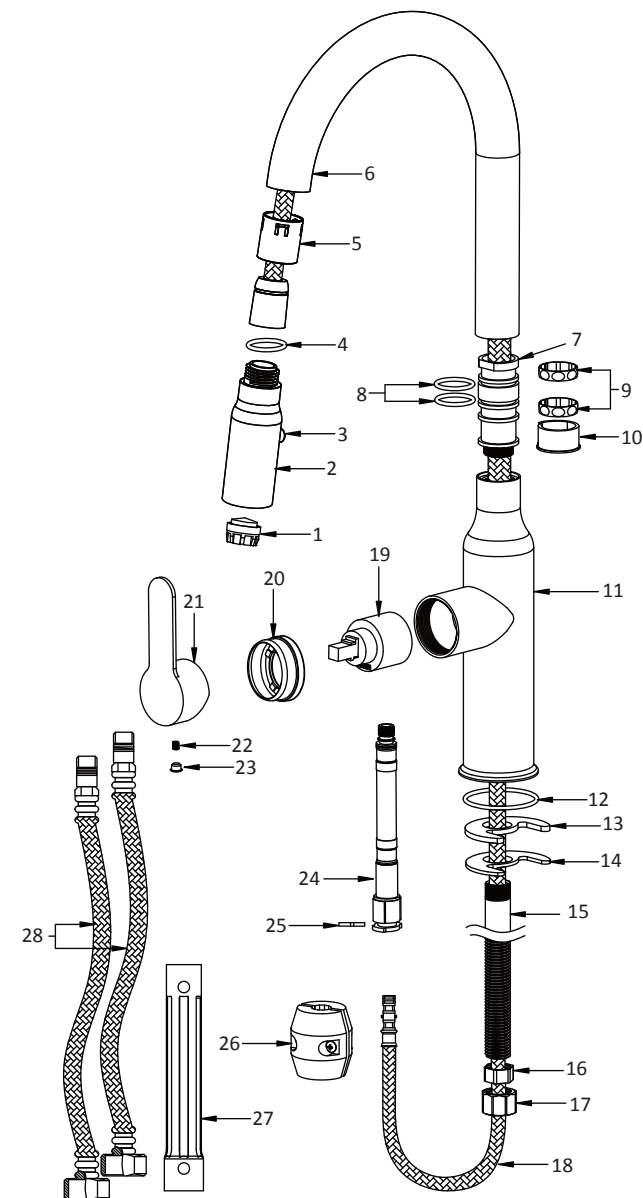
Notes

1. All pipework must be thoroughly flushed prior to installation as foreign materials may block the flow .
2. Aerator and the flow control can be removed with standard tool and cleaned.
3. If a screen-filter is fitted into the faucet, remove it and flush the pipes and faucet to remove grit. Then re-insert the screen.

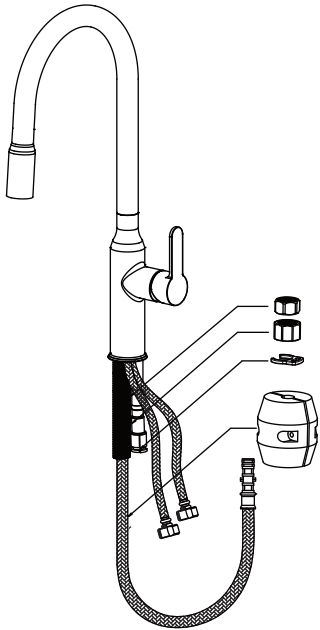
KTC018

Parts List

- 1 Aerator
- 2 Pull out spray
- 3 Button
- 4 O-ring
- 5 Plastic coat
- 6 Spout
- 7 Connector
- 8 O-ring
- 9 C-ring
- 10 Plastic coat
- 11 Faucet body
- 12 O-ring
- 13 Plastic washer
- 14 Steel washer
- 15 Threaded tube
- 16 Stainless steel nut
- 17 Plastic nut
- 18 Pull out hose
- 19 Cartridge
- 20 Locking Nut
- 21 Handle cap
- 22 Screw
- 23 Cover
- 24 Connecting pipe
- 25 White safety lock
- 26 Weight
- 27 Tool
- 28 Flexible hose



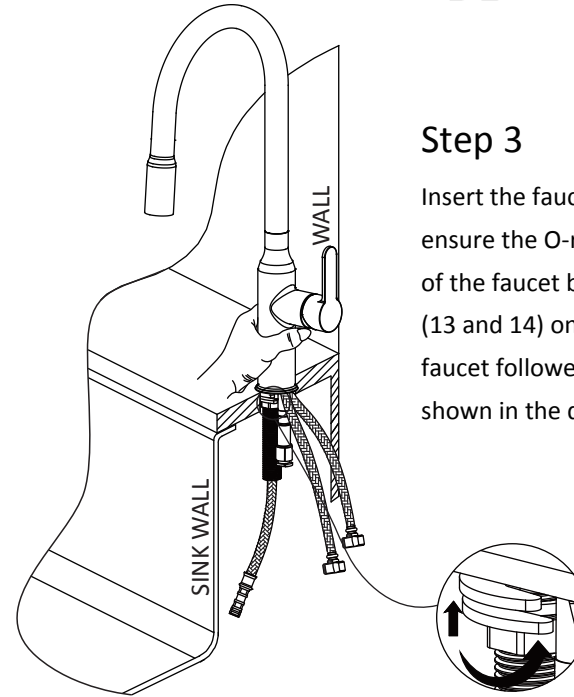
KTC018



Step 1

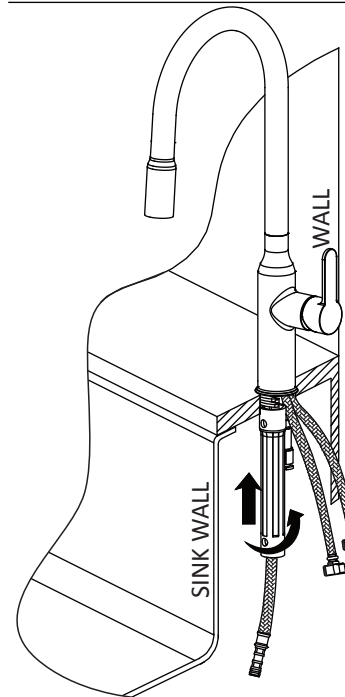
Take off the white safety lock (25). Then extract the pull-out hose (18) from the connecting pipe (24). Remove the weight (26), disassemble other parts in sequence (16) (17). Ensure threaded tube (15) is tight in the faucet body (11).

Note: please lower the shower head onto the countertop while the weight (26) is being removed.



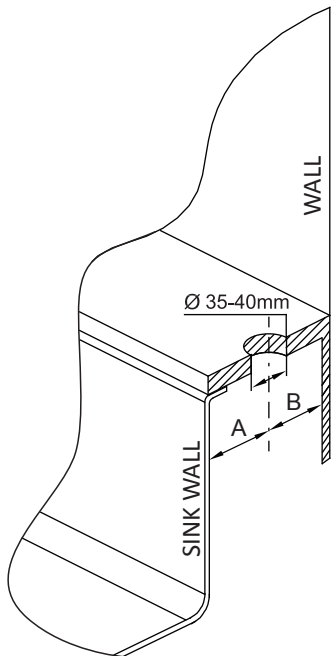
Step 3

Insert the faucet into the countertop and ensure the O-ring (12) is secure in the groove of the faucet body. Then slide the washers (13 and 14) onto the threaded tube (15) of the faucet followed by the nut (16) in the order shown in the diagram.



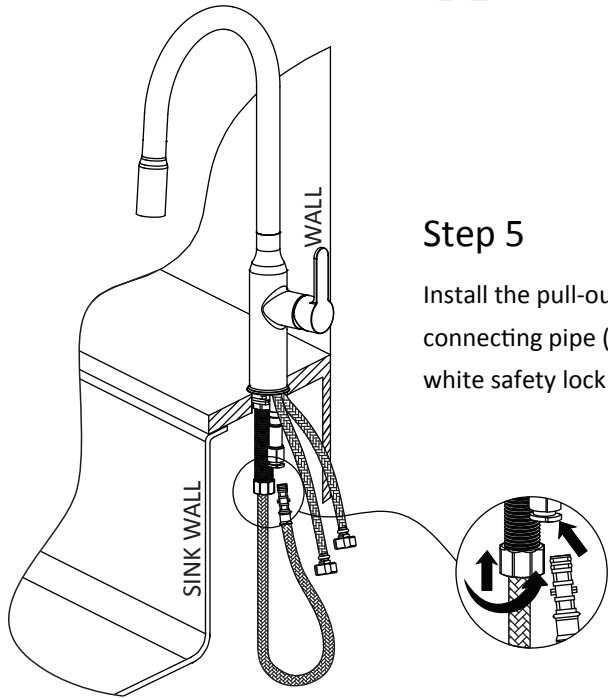
Step 4

Tighten the stainless steel nut (16) by wrench and ensure the faucet is correctly aligned above the countertop. Then install the plastic nut (17) and tight.



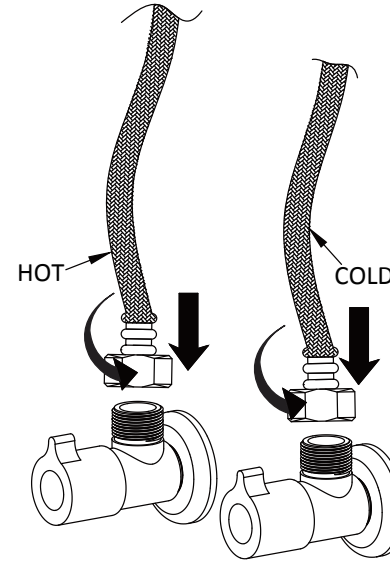
Step 2

Locate a hole centre in the countertop at least 50mm from the wall and with enough clearance to the rim/flange of the sink. Dim. A >50mm(2") and Dim. B >50mm (2") . If you need to locate the faucet within these dimensions, you should ensure enough clearance for the mounting washers and nut (13,14,16,17). Cut a hole 35 to 40mm diameter into the countertop .



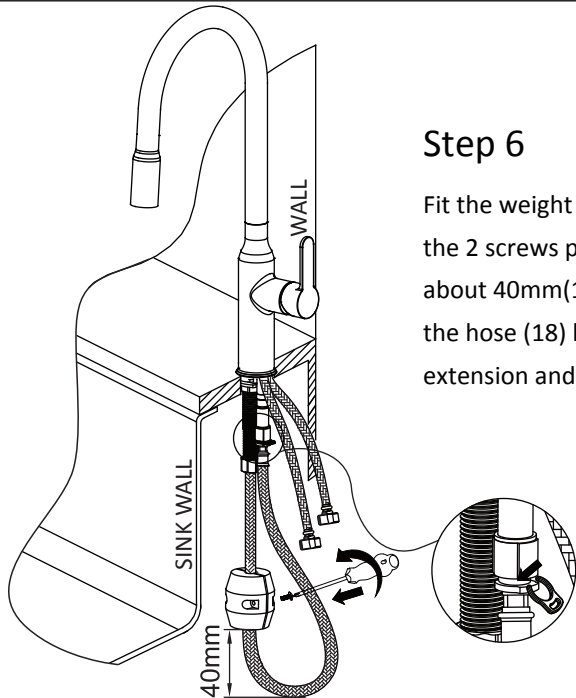
Step 5

Install the pull-out hose (18) onto the connecting pipe (24). Then clip on the white safety lock (25) .



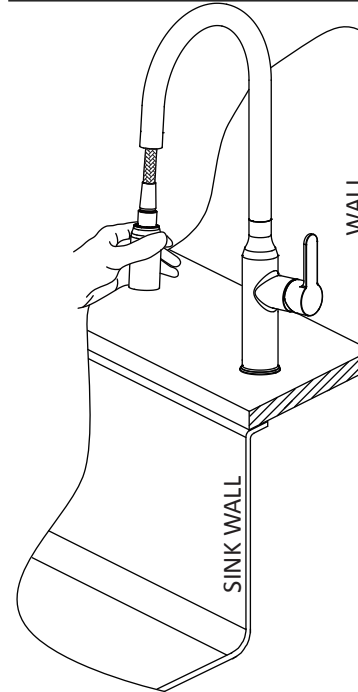
Step 7

Flush the wall valves to ensure no grit enters the faucet. Now attach the hoses to the wall valves ensuring the hose with RED braid attaches to the hot water outlet.



Step 6

Fit the weight (26) onto the hose using the 2 screws provided. Position the weight about 40mm(1½") above the bottom of the hose (18) loop. This will ensure maximum extension and retract fully.



Step 8

Test the faucet flow and mix functions, and hose pull-out. If the faucet is fitted with dual spray/stream you should also ensure this is working properly. If any grit etc has entered the faucet you can easily remove the aerator (1) and clean/reattach.



Troubleshooting

1. If the pull-out hose (18) is catching or not retracting fully, you should ensure that the weight (26) is located just above the bottom of the loop. Also ensure the weight/hose are not catching on items in the cabinet.
2. If the water stream is uneven it is possible that debris or grit has blocked the aerator. You can remove the tip of the spout and backflush the aerator. Firmly retighten the retaining nut.
3. If the faucet is loose or rotating at the base as it enters the countertop you should retighten the nut (16,17) ensuring the handle lever assembly is correctly positioned.