

STONEWOOD

BATH CABINETS

QUALITY

•

STYLE

•

CRAFTSMANSHIP

•

VALUE



2018 BUYING GUIDE

Our Goal

Our goal is to supply quality products with a wide range of colour options. Our Mix & Match program encourages homeowners to be creative with their décor selections. We work hard to be an industry leader, continuously introducing new trend setting colours and styles. We rigorously review our process and quality control to give our customers the best value in the industry.



Quick TURNAROUND

Once your order has been placed, expect to receive your custom vanity in 2 - 3 weeks.



Hundreds of COLOUR COMBINATIONS



PROUDLY *Canadian*

Our production facility is located in Barrie, Ontario. All final assembly and quality inspections take place here.

ON THE COVER:
Vanity: 72" Lakewood
Vanity top: Fantasy Quartz
Hardware: Bevelled – Brushed Nickel

INSIDE COVER:
Vanity: 36" Desert Oak (Dresser Style)
Vanity top: Fantasy Quartz
Hardware: Long Curved – Black

TABLE OF CONTENTS

Superior Quality	3
Premium Features	4
Wire Brushed Oak Premium Collection ...	6
Painted Classic Collection	10
Five Shades of Grey Premium Painted Collection	11
Stained Classic Collection	14
Linen Tower Integration	18
Accessories	20
Stone Vanity Tops	22
Under Mount Sinks	25
Hardware	26
Dimensions	28
Project Planning & Installation Tips	30
Layout Options	31
Easy Ordering	32





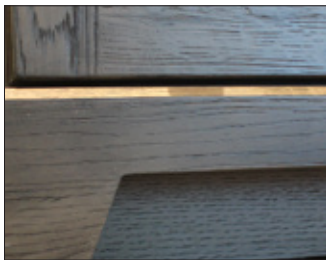
Superior Quality

Stonewood Bath Cabinetry uses solid hardwood back and face frame construction and dovetail drawers for superior construction integrity. Our natural Granite and engineered Quartz vanity tops lead the industry in selection and quality.

Premium Features

Quality components and superior craftsmanship make us number one in the industry.

We offer warranties on all of our vanities, countertops, drawer slides and hinges. More information can be found at stonewoodbath.com/warranty.



1. Solid hardwood furniture kick and secondary "dust" kick – no dust bunnies and plenty of space for your toes



2. Hardwood dovetail drawer box – strongest of all wood joints
Inserted bumpers – guaranteed not to fall off



3. 5/8" plywood side panels and floor for resistance against moisture and added durability



4. Solid hardwood back frame and face frame – stronger than frameless cabinetry
Super duty, soft-closing hardware with lifetime warranty



5. Open back for easy installation and plumbing access



6. Fully adjustable hardware for leveling drawer fronts and 5/8" plywood drawer bottom



7. Full extension drawers – for complete access



8. 6-Way adjustable soft-closing hinges – safe and quiet



WIRE BRUSHED OAK

PREMIUM COLLECTION

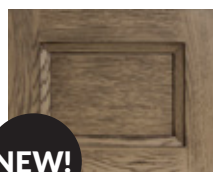


48" Desert Oak vanity with Fantasy Quartz top

Our Wire Brushed Oak Premium Collection is stunning! We enhance the original wood grain of oak by wire brushing the surface to expose its natural characteristics and beauty. Multiple coats of stain and glaze further enhance the natural deep oak grain. The final product is a premium wood finish that will complement any décor.

Available in:

DESERT OAK



URBAN OAK



WEATHERED OAK



NEW!



Finishing PROCESS

1. We start by selecting furniture grade, kiln dried, North American oak.
2. Components are wire brushed to bring out wood grain and texture.
3. Multiple coats of stain and glaze are carefully applied by hand.
4. Sanding between each coat is a critical step in our finishing process.
5. Two coats of premium quality furniture varnish are applied, making our products scratch, scuff, moisture and stain resistant.
6. To complete the finishing process, a rigorous final inspection takes place, ensuring that each finished part meets our highest quality standards.

NOTE: *Due to woods natural uniqueness and because each Stonewood product is finished by hand, there may be diversity in colour, tone and grain pattern. The differences will vary from these pictures, in-store display samples and from product to product.*





◀ 24" VANITY

Shown in: Weathered Oak
Vanity top: Porcelain sink basin
Hardware: Modern – Oil Rubbed Bronze

Available in:

DESERT OAK	(VAN-024-DESERTOAK-C-1)
URBAN OAK	(VAN-024-URBANOAK-C-1)
WEATHERED OAK	(VAN-024-WEATHEREDOAK-C-1)



◀ 30"/36" RIGHT OR LEFT DRAWER VANITY

Shown in: 36" Urban Oak (right drawer)
Vanity top: Carrera Quartz
Hardware: Slim – Chrome

Available in:

	Right Drawer	Left Drawer
DESERT OAK	(VAN-030-DESERTOAK-R-1) (VAN-036-DESERTOAK-R-1)	(VAN-030-DESERTOAK-L-1) (VAN-036-DESERTOAK-L-1)
URBAN OAK	(VAN-030-URBANOAK-R-1) (VAN-036-URBANOAK-R-1)	(VAN-030-URBANOAK-L-1) (VAN-036-URBANOAK-L-1)
WEATHERED OAK	(VAN-030-WEATHEREDOAK-R-1) (VAN-036-WEATHEREDOAK-R-1)	(VAN-030-WEATHEREDOAK-L-1) (VAN-036-WEATHEREDOAK-L-1)

NEW VANITY COLOUR AND STYLE



◀ 30"/36" DRESSER STYLE VANITY

Shown in: 36" Desert Oak
Vanity top: Pewter Quartz
Hardware: Long Curved – Black



Available in:

DESERT OAK	(VAN-030-DESERTOAK-2DR-1) (VAN-036-DESERTOAK-2DR-1)
URBAN OAK	(VAN-030-URBANOAK-2DR-1) (VAN-036-URBANOAK-2DR-1)
WEATHERED OAK	(VAN-030-WEATHEREDOAK-2DR-1) (VAN-036-WEATHEREDOAK-2DR-1)

NEW VANITY COLOUR



◀ 42"/48"/60" SINGLE BOWL VANITY

Shown in: 48" Desert Oak
 Vanity top: Fantasy Quartz
 Hardware: Bar – Brushed Nickel

NEW!

Available in:

DESERT OAK	(VAN-042-DESERTOAK-C-1)
	(VAN-048-DESERTOAK-C-1)
	(VAN-060-DESERTOAK-C-1)
URBAN OAK	(VAN-042-URBANOAK-C-1)
	(VAN-048-URBANOAK-C-1)
	(VAN-060-URBANOAK-C-1)
WEATHERED OAK	(VAN-042-WEATHEREDOAK-C-1)
	(VAN-048-WEATHEREDOAK-C-1)
	(VAN-060-WEATHEREDOAK-C-1)



◀ 60"/72" DOUBLE BOWL VANITY

Shown in: 60" Weathered Oak
 Vanity top: Fantasy Quartz
 Hardware: Wide – Black

Available in:

DESERT OAK	(VAN-060-DESERTOAK-C-2)
	(VAN-072-DESERTOAK-C-2)
URBAN OAK	(VAN-060-URBANOAK-C-2)
	(VAN-072-URBANOAK-C-2)
WEATHERED OAK	(VAN-060-WEATHEREDOAK-C-2)
	(VAN-072-WEATHEREDOAK-C-2)

PAINTED

CLASSIC COLLECTION



36" White Shaker vanity with Fusion Quartz top

We achieve the smooth, uniform finish of our Painted Classic Collection by applying multiple coats of paint and sanding in between each coat. Choose from three door styles: White Shaker or Bellrose for a crisp, clean look or Biscotti Raised Panel for traditional décor. All three door styles can be painted in your choice of Five Shades of Grey.

Available in:

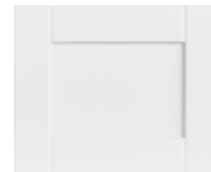
**BISCOTTI
RAISED PANEL**



**WHITE
BELLROSE**



**WHITE
SHAKER**



Finishing PROCESS

1. Chosen from select hardwoods, our lumber is kiln dried to 8% humidity for optimal performance.
2. Door and drawer center panels are made of HDF (High Density Fiberboard) to minimize expansion and contraction.
3. Each wood component is sanded to a smooth and even surface.
4. After sanding, the doors are sent to be dusted and inspected.
5. The doors are then primed, painted and sanded.
6. The painting and sanding process is repeated until a uniform finish is reached.
7. A heavily pigmented lacquer is applied as a final coat.
8. To complete the finishing process, a rigorous final inspection takes place, ensuring that each finished part meets our highest quality standards.

NOTE: Each Stonewood product is finished by hand. There may be diversity in colour and tone. The differences will vary from these pictures, in-store display samples, and from product to product.



48" White Bellrose vanity shown in Navy Grey with Fantasy Quartz top

Five Shades OF GREY

PREMIUM PAINTED COLLECTION

Have your vanity professionally painted! Door styles include: Biscotti Raised Panel, White Shaker and White Bellrose. Available in five popular paint colours.

Please allow up to four weeks for delivery. Refer to colour swatches for accurate paint representation. A 15% premium applies to each painted product.

NEW!

NAVY GREY

Similar to Beauti-tone Rooftop at Midnight F034-3, Benjamin Moore Hale Navy HC-154

SMOKE

Similar to Beauti-Tone Roller Skates ST016, Benjamin Moore Metropolitan 690

SILVER

Similar to Beauti-Tone Class Act D40-4-1592-4, Benjamin Moore Vintage Pewter 110

GRAPHITE

Similar to Beauti-Tone Warehouse District F045-4, Benjamin Moore Overcoat 544

TITANIUM

Similar to Beauti-Tone Mink About It RI63-4, Benjamin Moore Metropolitan 546



White Bellrose finish



◀ 24" VANITY

Shown in: Biscotti Raised Panel
Vanity top: Porcelain sink basin
Hardware: Modern – Brushed Nickel

Available in:

BISCOTTI RAISED PANEL	(VAN-024-BISCOTTI-C-1)
WHITE BELLROSE	(VAN-024-BELLROSE-C-1)
WHITE SHAKER	(VAN-024-WHITE-C-1)



◀ 30"/36" RIGHT OR LEFT DRAWER VANITY

Shown in: 36" White Bellrose (right drawer)
Vanity top: Pewter Quartz
Hardware: Curved – Chrome

Available in:

	Right Drawer	Left Drawer
BISCOTTI RAISED PANEL	(VAN-030-BISCOTTI-R-1) (VAN-036-BISCOTTI-R-1)	(VAN-030-BISCOTTI-L-1) (VAN-036-BISCOTTI-L-1)
WHITE BELLROSE	(VAN-030-BELLROSE-R-1) (VAN-036-BELLROSE-R-1)	(VAN-030-BELLROSE-L-1) (VAN-036-BELLROSE-L-1)
WHITE SHAKER	(VAN-030-WHITE-R-1) (VAN-036-WHITE-R-1)	(VAN-030-WHITE-L-1) (VAN-036-WHITE-L-1)

NEW VANITY STYLE



◀ 30"/36" DRESSER STYLE VANITY

Shown in: 30" White Shaker
Vanity top: Fuzion Quartz
Hardware: Long Curved – Brushed Nickel

Available in:

BISCOTTI RAISED PANEL	(VAN-030-BISCOTTI-2DR-1) (VAN-036-BISCOTTI-2DR-1)
WHITE BELLROSE	(VAN-030-BELLROSE-2DR-1) (VAN-036-BELLROSE-2DR-1)
WHITE SHAKER	(VAN-030-WHITE-2DR-1) (VAN-036-WHITE-2DR-1)

NEW!



◀ 42"/48"/60" SINGLE BOWL VANITY

Shown in: 48" White Bellrose

Vanity top: Fantasy Quartz

Hardware: Bevelled – Brushed Nickel

Available in:

BISCOTTI	(VAN-042-BISCOTTI-C-1)
RAISED PANEL	(VAN-048-BISCOTTI-C-1)
	(VAN-060-BISCOTTI-C-1)

WHITE BELLROSE	(VAN-042-BELLROSE-C-1)
	(VAN-048-BELLROSE-C-1)
	(VAN-060-BELLROSE-C-1)

WHITE SHAKER	(VAN-042-WHITE-C-1)
	(VAN-048-WHITE-C-1)
	(VAN-060-WHITE-C-1)



◀ 60"/72" DOUBLE BOWL VANITY

Shown in: 72" Biscotti Raised Panel

Vanity top: Frosty Grey Quartz

Hardware: Modern – Brushed Nickel

Available in:

BISCOTTI	(VAN-060-BISCOTTI-C-2)
RAISED PANEL	(VAN-072-BISCOTTI-C-2)

WHITE BELLROSE	(VAN-060-BELLROSE-C-2)
	(VAN-072-BELLROSE-C-2)

WHITE SHAKER	(VAN-060-WHITE-C-2)
	(VAN-072-WHITE-C-2)



STAINED

CLASSIC COLLECTION



72" Lakewood vanity with Fantasy Quartz top

Our Stained Classic Collection is an assortment of popular wood stains and glazes, offered on a variety of door styles. Multiple coats of stain and glaze are applied by hand to achieve a deep, rich finish traditionally found on high-end furniture.

Available in:

CHESTNUT



ESPRESSO



LAKEWOOD



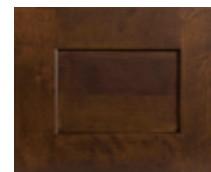
MERLOT



MUSKOKA



SHAKER CHESTNUT





Chestnut finish

Finishing PROCESS

1. We start by selecting furniture grade, kiln dried hardwood.
2. Multiple coats of stain and glaze are carefully applied by hand.
3. Sanding between each coat is a critical step in our finishing process.
4. Two coats of premium quality furniture varnish are applied, making our products scratch, scuff, moisture and stain resistant.
5. To complete the finishing process, a rigorous final inspection takes place, ensuring that each finished part meets our highest quality standards.

NOTE: Due to woods natural uniqueness and because each Stonewood product is finished by hand, there may be diversity in colour, tone, and grain pattern. The differences will vary from these pictures, in-store display samples and from product to product.



Shaker Chestnut finish



◀ 24" VANITY

Shown in: Muskoka
Vanity top: Porcelain sink basin
Hardware: Modern – Brushed Nickel

Available in:

CHESTNUT	(VAN-024-CHESTNUT-C-1)
ESPRESSO	(VAN-024-ESPRESSO-C-1)
LAKEWOOD	(VAN-024-LAKEWOOD-C-1)
MERLOT	(VAN-024-MERLOT-C-1)
MUSKOKA	(VAN-024-MUSKOKA-C-1)
SHAKER CHESTNUT	(VAN-024-SHAKERCHESTNUT-C-1)



◀ 30"/36" RIGHT OR LEFT DRAWER VANITY

Shown in: 36" Chestnut
Vanity top: Giallo Granite
Hardware: Modern – Black

Available in:

	Right Drawer	Left Drawer
CHESTNUT	(VAN-030-CHESTNUT-R-1) (VAN-036-CHESTNUT-R-1)	(VAN-030-CHESTNUT-L-1) (VAN-036-CHESTNUT-L-1)
ESPRESSO	(VAN-030-ESPRESSO-R-1) (VAN-036-ESPRESSO-R-1)	(VAN-030-ESPRESSO-L-1) (VAN-036-ESPRESSO-L-1)
LAKEWOOD	(VAN-030-LAKEWOOD-R-1) (VAN-036-LAKEWOOD-R-1)	(VAN-030-LAKEWOOD-L-1) (VAN-036-LAKEWOOD-L-1)
MERLOT	(VAN-030-MERLOT-R-1) (VAN-036-MERLOT-R-1)	(VAN-030-MERLOT-L-1) (VAN-036-MERLOT-L-1)
MUSKOKA	(VAN-030-MUSKOKA-R-1) (VAN-036-MUSKOKA-R-1)	(VAN-030-MUSKOKA-L-1) (VAN-036-MUSKOKA-L-1)
SHAKER CHESTNUT	(VAN-030-SHAKERCHESTNUT-R-1) (VAN-036-SHAKERCHESTNUT-R-1)	(VAN-030-SHAKERCHESTNUT-L-1) (VAN-036-SHAKERCHESTNUT-L-1)

NEW VANITY COLOUR AND STYLE



◀ 30"/36" DRESSER STYLE VANITY

Shown in: 30" Lakewood
Vanity top: Dover White Quartz
Hardware: Long Curved – Chrome

NEW!

Available in:

LAKEWOOD	(VAN-030-LAKEWOOD-2DR-1) (VAN-036-LAKEWOOD-2DR-1)
----------	--



◀ 42"/48"/60" SINGLE BOWL VANITY

Shown in: 42" Shaker Chestnut

Vanity top: White Rose Granite

Hardware: Bar – Oil Rubbed Bronze

Available in:

CHESTNUT	(VAN-042-CHESTNUT-C-1) (VAN-048-CHESTNUT-C-1) (VAN-060-CHESTNUT-C-1)
ESPRESSO	(VAN-042-ESPRESSO-C-1) (VAN-048-ESPRESSO-C-1) (VAN-060-ESPRESSO-C-1)
LAKEWOOD	(VAN-042-LAKEWOOD-C-1) (VAN-048-LAKEWOOD-C-1) (VAN-060-LAKEWOOD-C-1)
MERLOT	(VAN-042-MERLOT-C-1) (VAN-048-MERLOT-C-1) (VAN-060-MERLOT-C-1)
MUSKOKA	(VAN-042-MUSKOKA-C-1) (VAN-048-MUSKOKA-C-1) (VAN-060-MUSKOKA-C-1)
SHAKER CHESTNUT	(VAN-042-SHAKERCHESTNUT-C-1) (VAN-048-SHAKERCHESTNUT-C-1) (VAN-060-SHAKERCHESTNUT-C-1)



◀ 60"/72" DOUBLE BOWL VANITY

Shown in: 60" Espresso

Vanity top: Fantasy Quartz

Hardware: Curved – Brushed Nickel

Available in:

CHESTNUT	(VAN-060-CHESTNUT-C-2) (VAN-072-CHESTNUT-C-2)
ESPRESSO	(VAN-060-ESPRESSO-C-2) (VAN-072-ESPRESSO-C-2)
LAKEWOOD	(VAN-060-LAKEWOOD-C-2) (VAN-072-LAKEWOOD-C-2)
MERLOT	(VAN-060-MERLOT-C-2)
MUSKOKA	(VAN-060-MUSKOKA-C-2)
SHAKER CHESTNUT	(VAN-060-SHAKERCHESTNUT-C-2)

Linen Tower

INTEGRATION

Linen towers have a matching finished interior.

The standard option comes with open upper shelves (see pg. 5) or a door with left or right hinges can be added at no additional charge (shown right).

CUSTOM INTEGRATION FOR A PERFECT FIT

Linen towers can be installed three unique ways; Free standing, tight against a wall or for a perfect finish, you can also integrate the linen tower(s) with your vanity. No matter what your preference, our linen tower will complete the look of your bathroom.

The linen tower can be installed free standing (as it is finished on all three sides) or against a wall by cutting back the crown molding and using a filler strip. **NOTE: this cut must be performed on site by a skilled trades professional.**

We customize the vanity top to ensure a perfect fit between the linen tower and vanity cabinet. The linen tower decorative kick is designed to integrate seamlessly with the vanity decorative kick. A $\frac{3}{4}$ " filler closes the gap and the side splash is also cut down for a custom look.

When purchasing a linen tower, please consult with a sales associate and choose from the linen tower layout options (see page 31). We will prepare the linen tower(s) according to your layout, facilitating the installation.

Available in:

DESERT OAK	(LIT-DESERTOAK)
URBAN OAK	(LIT-URBANOAK)
WEATHERED OAK	(LIT-WEATHEREDOAK)
BISCOTTI RAISED PANEL	(LIT-BISCOTTI)
WHITE BELLROSE	(LIT-BELLROSE)
WHITE SHAKER	(LIT-WHITE)
CHESTNUT	(LIT-CHESTNUT)
ESPRESSO	(LIT-ESPRESSO)
LAKEWOOD	(LIT-LAKEWOOD)
MERLOT	(LIT-MERLOT)
MUSKOKA	(LIT-MUSKOKA)
SHAKER CHESTNUT	(LIT-SHAKERCHESTNUT)

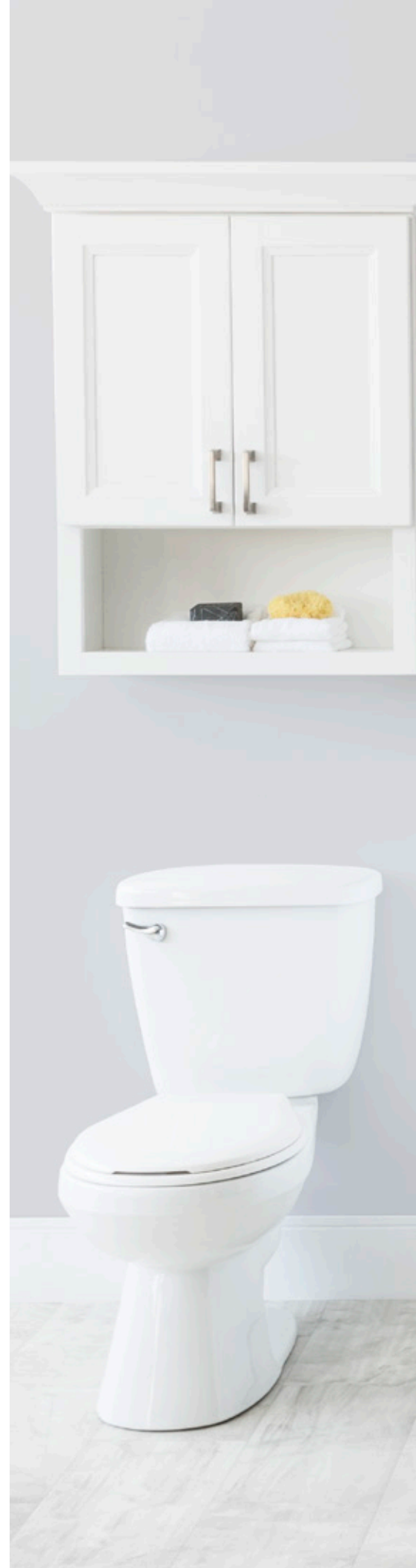
NOTE: When integrating a linen tower and vanity we recommend the installation be performed by a skilled trades professional.



▲ Decorative kick integration



▲ Side splash is precut for Linen Tower integration





Accessories

Complete the look of your new bathroom with our storage cabinets, mirrors and medicine cabinets. All available in our entire colour range!



BATH STORAGE CABINETS

Add a matching bath storage cabinet over your toilet for even more storage. Available in all colours.

Shown in: Desert Oak
Hardware: Modern – Black

Available in:

DESERT OAK	(OTJ-DESERTOAK)	CHESTNUT	(OTJ-CHESTNUT)
URBAN OAK	(OTJ-URBANOAK)	ESPRESSO	(OTJ-ESPRESSO)
WEATHERED OAK	(OTJ-WEATHEREDOAK)	LAKEWOOD	(OTJ-LAKEWOOD)
WHITE BELLROSE	(OTJ-BELLROSE)	MERLOT	(OTJ-MERLOT)
WHITE SHAKER	(OTJ-WHITE)	MUSKOKA	(OTJ-MUSKOKA)
BISCOTTI RAISED PANEL	(OTJ-BISCOTTI)	SHAKER CHESTNUT	(OTJ-SHAKERCHESTNUT)



MIRRORS

Complement your new vanity with a matching, wood-framed mirror. All mirrors are 35¼" in height. Available in all colours and various widths.

◀ 26" MIRROR

Shown in: Desert Oak

Available in:

	Mirror width	Product code		Mirror width	Product code
DESERT OAK	19½"	(MIR-024-DESERTOAK)	CHESTNUT/ SHAKER CHESTNUT	19½"	(MIR-024-CHESTNUT)
	26"	(MIR-030-DESERTOAK)		26"	(MIR-030-CHESTNUT)
	36"	(MIR-040-DESERTOAK)		36"	(MIR-040-CHESTNUT)
	55½"	(MIR-060-DESERTOAK)		55½"	(MIR-060-CHESTNUT)
URBAN OAK	19½"	(MIR-024-URBANOAK)	ESPRESSO	19½"	(MIR-024-ESPRESSO)
	26"	(MIR-030-URBANOAK)		26"	(MIR-030-ESPRESSO)
	36"	(MIR-040-URBANOAK)		36"	(MIR-040-ESPRESSO)
	55½"	(MIR-060-URBANOAK)		55½"	(MIR-060-ESPRESSO)
WEATHERED OAK	19½"	(MIR-024-WEATHEREDOAK)	LAKEWOOD	19½"	(MIR-024-LAKEWOOD)
	26"	(MIR-030-WEATHEREDOAK)		26"	(MIR-030-LAKEWOOD)
	36"	(MIR-040-WEATHEREDOAK)		36"	(MIR-040-LAKEWOOD)
	55½"	(MIR-060-WEATHEREDOAK)		55½"	(MIR-060-LAKEWOOD)
BISCOTTI RAISED PANEL	19½"	(MIR-024-BISCOTTI)	MERLOT	19½"	(MIR-024-MERLOT)
	26"	(MIR-030-BISCOTTI)		26"	(MIR-030-MERLOT)
	36"	(MIR-040-BISCOTTI)		36"	(MIR-040-MERLOT)
	55½"	(MIR-060-BISCOTTI)		55½"	(MIR-060-MERLOT)
WHITE BELLROSE/ WHITE SHAKER	19½"	(MIR-024-WHITE)	MUSKOKA	19½"	(MIR-024-MUSKOKA)
	26"	(MIR-030-WHITE)		26"	(MIR-030-MUSKOKA)
	36"	(MIR-040-WHITE)		36"	(MIR-040-MUSKOKA)
	55½"	(MIR-060-WHITE)		55½"	(MIR-060-MUSKOKA)



MEDICINE CABINETS

30" medicine cabinets are designed to be mounted flush or recessed. Please make your selection on the order form. To facilitate recessed installation we cut the back of the crown molding. **NOTE:** Wall opening requirement for 30" recessed medicine cabinet is 35" x 25½".

◀ 30" MEDICINE CABINET

Shown in: Lakewood

Available in:

DESERT OAK	(MED-030-DESERTOAK)
URBAN OAK	(MED-030-URBANOAK)
WEATHERED OAK	(MED-030-WEATHEREDOAK)
BISCOTTI RAISED PANEL	(MED-030-BISCOTTI)
WHITE BELLROSE/ WHITE SHAKER	(MED-030-WHITE)

CHESTNUT/ SHAKER CHESTNUT	(MED-030-CHESTNUT)
ESPRESSO	(MED-030-ESPRESSO)
LAKEWOOD	(MED-030-LAKEWOOD)
MERLOT	(MED-030-MERLOT)
MUSKOKA	(MED-030-MUSKOKA)



All medicine cabinets have finished interiors with two adjustable glass shelves.

◀ 48"/60" MEDICINE CABINET

Shown in: 48" White Bellrose painted Graphite
Hardware: Classic – Chrome

Available in:

DESERT OAK	(MED-048-DESERTOAK) (MED-060-DESERTOAK)
URBAN OAK	(MED-048-URBANOAK) (MED-060-URBANOAK)
WEATHERED OAK	(MED-048-WEATHEREDOAK) (MED-060-WEATHEREDOAK)
BISCOTTI RAISED PANEL	(MED-048-BISCOTTI) (MED-060-BISCOTTI)
WHITE BELLROSE	(MED-048-BELLROSE) (MED-060-BELLROSE)
WHITE SHAKER	(MED-048-WHITE) (MED-060-WHITE)
CHESTNUT	(MED-048-CHESTNUT) (MED-060-CHESTNUT)
ESPRESSO	(MED-048-ESPRESSO) (MED-060-ESPRESSO)
LAKEWOOD	(MED-048-LAKEWOOD) (MED-060-LAKEWOOD)
MERLOT	(MED-048-MERLOT) (MED-060-MERLOT)
MUSKOKA	(MED-048-MUSKOKA) (MED-060-MUSKOKA)
SHAKER CHESTNUT	(MED-048-SHAKERCHESTNUT) (MED-060-SHAKERCHESTNUT)



Add an extra source of light!

Our 48" and 60" medicine cabinets are available with premium, high efficiency, LED flush mount lights for a secondary source of light. Each LED light output is 20 watts.

NOTE: 48" and 60" medicine cabinets will not fit between two linen towers for E layouts found on Page 31.

60" medicine cabinets are intended for 60" single bowl cabinets and are not compatible with 60" and 72" double bowl cabinets.

Stone Vanity Tops

Stonewood's Quartz and Granite tops offer a high standard of quality, completing the look of your vanity.

Stonewood Bath Cabinetry strives to give our customers the power of choice. This continues with our stone vanity tops. We offer 16 colour options, two sink styles (white or linen) and your choice of single, 4" on centre or 8" on centre faucet hole drilling options (see pg. 29). Your vanity top comes complete with a matching 4" backsplash and one side splash. For an additional charge, vanity tops can be custom cut and re-polished or custom cut to fit between two walls with a second side splash added. Please consult with a sales associate to help you fill out a custom cut vanity top order form.



QUARTZ

Our non-porous, 92% Natural Quartz stone is engineered for consistent colour. It is heat, scratch and stain resistant. No sealing is required, making it maintenance free. The following stone images are a representation of our Quartz. There may be variances in colour and pattern between the pictures, in-store samples and your vanity top.



CARRERA

TOP-31.5-CARRERA-R-1	TOP-61.5-CARRERA-R-1
TOP-37.5-CARRERA-R-1	TOP-61.5-CARRERA-R-2
TOP-43.5-CARRERA-R-1	TOP-73.5-CARRERA-R-2
TOP-49.5-CARRERA-R-1	



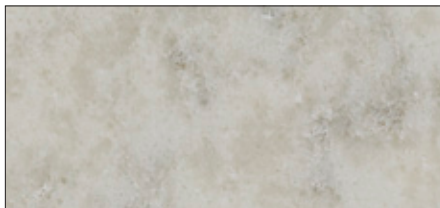
DOVER WHITE

TOP-31.5-DOVER-R-1	TOP-61.5-DOVER-R-1
TOP-37.5-DOVER-R-1	TOP-61.5-DOVER-R-2
TOP-43.5-DOVER-R-1	TOP-73.5-DOVER-R-2
TOP-49.5-DOVER-R-1	



FANTASY

TOP-31.5-FANTASY-R-1	TOP-61.5-FANTASY-R-1
TOP-37.5-FANTASY-R-1	TOP-61.5-FANTASY-R-2
TOP-43.5-FANTASY-R-1	TOP-73.5-FANTASY-R-2
TOP-49.5-FANTASY-R-1	



FROSTY GREY

TOP-31.5-FROSTYGREY-R-1	TOP-61.5-FROSTYGREY-R-1
TOP-37.5-FROSTYGREY-R-1	TOP-61.5-FROSTYGREY-R-2
TOP-43.5-FROSTYGREY-R-1	TOP-73.5-FROSTYGREY-R-2
TOP-49.5-FROSTYGREY-R-1	



FUZION

TOP-31.5-FUZION-R-1	TOP-61.5-FUZION-R-1
TOP-37.5-FUZION-R-1	TOP-61.5-FUZION-R-2
TOP-43.5-FUZION-R-1	TOP-73.5-FUZION-R-2
TOP-49.5-FUZION-R-1	



MOSAIC

TOP-31.5-MOSAIC-R-1	TOP-61.5-MOSAIC-R-1
TOP-37.5-MOSAIC-R-1	TOP-61.5-MOSAIC-R-2
TOP-43.5-MOSAIC-R-1	TOP-73.5-MOSAIC-R-2
TOP-49.5-MOSAIC-R-1	



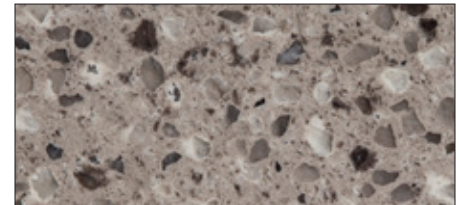
NIAGARA MIST

TOP-31.5-NIAGARAMIST-R-1	TOP-61.5-NIAGARAMIST-R-1
TOP-37.5-NIAGARAMIST-R-1	TOP-61.5-NIAGARAMIST-R-2
TOP-43.5-NIAGARAMIST-R-1	TOP-73.5-NIAGARAMIST-R-2
TOP-49.5-NIAGARAMIST-R-1	



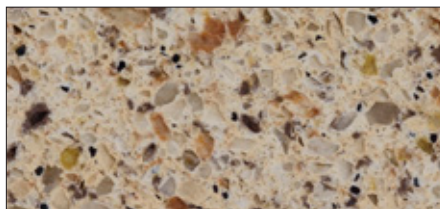
PEWTER

TOP-31.5-PEWTER-R-1	TOP-61.5-PEWTER-R-1
TOP-37.5-PEWTER-R-1	TOP-61.5-PEWTER-R-2
TOP-43.5-PEWTER-R-1	TOP-73.5-PEWTER-R-2
TOP-49.5-PEWTER-R-1	



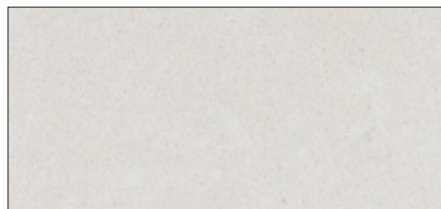
SIENNA

TOP-31.5-SIENNA-R-1	TOP-61.5-SIENNA-R-1
TOP-37.5-SIENNA-R-1	TOP-61.5-SIENNA-R-2
TOP-43.5-SIENNA-R-1	TOP-73.5-SIENNA-R-2
TOP-49.5-SIENNA-R-1	



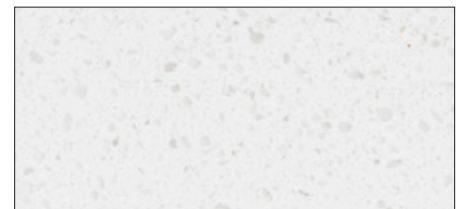
TERRA NOVA

TOP-31.5-TERRANOVA-R-1	TOP-61.5-TERRANOVA-R-1
TOP-37.5-TERRANOVA-R-1	TOP-61.5-TERRANOVA-R-2
TOP-43.5-TERRANOVA-R-1	TOP-73.5-TERRANOVA-R-2
TOP-49.5-TERRANOVA-R-1	



TORINO

TOP-31.5-TORINO-R-1	TOP-61.5-TORINO-R-1
TOP-37.5-TORINO-R-1	TOP-61.5-TORINO-R-2
TOP-43.5-TORINO-R-1	
TOP-49.5-TORINO-R-1	



WHITE SAND

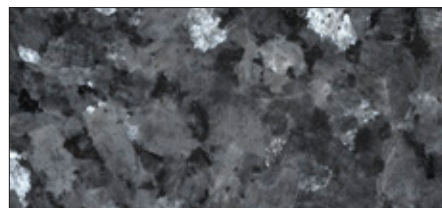
TOP-31.5-WHITESAND-R-1	TOP-61.5-WHITESAND-R-1
TOP-37.5-WHITESAND-R-1	TOP-61.5-WHITESAND-R-2
TOP-43.5-WHITESAND-R-1	73½" - Available mid-September 2018
TOP-49.5-WHITESAND-R-1	

GRANITE

Our Granite is unique in colour, veining and pattern. It is heat, scratch and stain resistant, extremely hard and durable, comes pre-sealed and is low maintenance.

Our Granite vanity tops are reinforced with steel rods for added durability. We seal our Granite using a silicon impregnator which repels liquids and stains.

The pictures below are a representation of our Granite vanity tops. Granite is a natural material and therefore every vanity top is unique, with its own characteristics. No two pieces are alike. There may be variances in colour and pattern compared to the pictures shown, in-store samples and your finished vanity top.



BLUE PEARL

TOP-31.5-BLUEPEARL-R-1

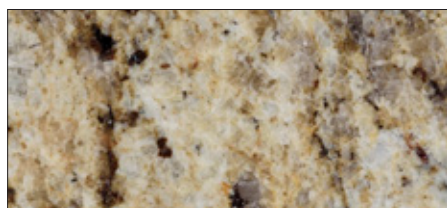
TOP-49.5-BLUEPEARL-R-1

TOP-37.5-BLUEPEARL-R-1

TOP-61.5-BLUEPEARL-R-1

TOP-43.5-BLUEPEARL-R-1

TOP-61.5-BLUEPEARL-R-2



GIALLO

TOP-31.5-GIALLO-R-1

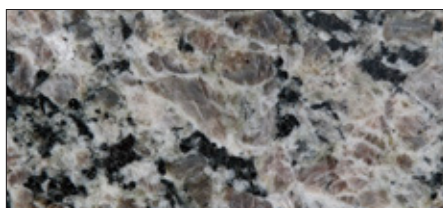
TOP-49.5-GIALLO-R-1

TOP-37.5-GIALLO-R-1

TOP-61.5-GIALLO-R-1

TOP-43.5-GIALLO-R-1

TOP-61.5-GIALLO-R-2



NEW CALEDONIA

TOP-31.5-NEWCALEDONIA-R-1

TOP-49.5-NEWCALEDONIA-R-1

TOP-37.5-NEWCALEDONIA-R-1

TOP-61.5-NEWCALEDONIA-R-1

TOP-43.5-NEWCALEDONIA-R-1

TOP-61.5-NEWCALEDONIA-R-2



WHITE ROSE

TOP-31.5-WHITEROSE-R-1

TOP-49.5-WHITEROSE-R-1

TOP-37.5-WHITEROSE-R-1

TOP-61.5-WHITEROSE-R-1

TOP-43.5-WHITEROSE-R-1

TOP-61.5-WHITEROSE-R-2



White Rose Granite top

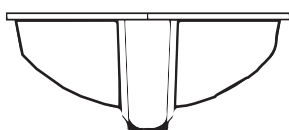
Under Mount Sinks by akwa

Select your sink and we will install it using an industrial strength silicone adhesive before shipping your vanity.

CLASSIC

Distinguished by a deep elongated basin, the Classic sink is a traditional style. The wide-shaped, sweeping sides rest under the counter. Available in White or Linen*.

PROFILE



CLASSIC WHITE (SNK-RECT-WHITE-CLASSIC)



CLASSIC LINEN (SNK-RECT-LINEN-CLASSIC)

MANHATTAN

With unique vertical sides, a low sloping bottom and a centre drain location, the Manhattan sink brings a modern contemporary look to any vanity combination. Available in White or Linen*.

PROFILE



MANHATTAN WHITE (SNK-RECT-WHITE-MANHATTAN)



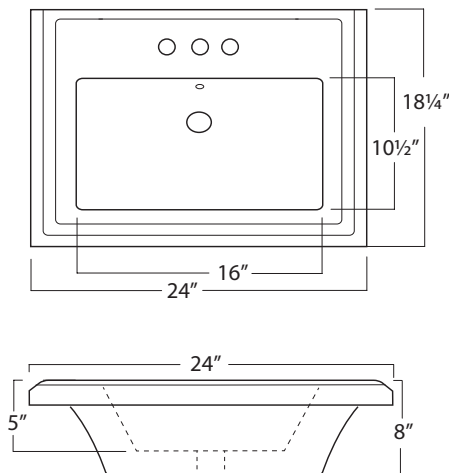
MANHATTAN LINEN (SNK-RECT-LINEN-MANHATTAN)

*The colour Linen is comparable to Kohler "Biscuit", Eljer "Silk", Toto "Sedona Beige" and American Standard "Linen".

24" VANITY

The 24" vanity comes with a porcelain sink basin – 4" drilling pattern only.

PORCELAIN BASIN SNK-024-WHITE-TOP



Hardware

NEW!

Stonewood now offers a wide range of handles and knobs for your vanity.
Choose “no hardware” on your order form to customize your look even further.

BAR



BLACK (96 MM)
HDWR-HANDLE-96MM-BAR-BK



BRUSHED NICKEL (96 MM)
HDWR-HANDLE-96MM-BAR-BN



CHROME (96 MM)
HDWR-HANDLE-96MM-BAR-CH



OIL RUBBED BRONZE (96 MM)
HDWR-HANDLE-96MM-BAR-ORB

BEVELLED



BLACK (96 MM)
HDWR-HANDLE-96MM-BEVELLED-BK



BRUSHED NICKEL (96 MM)
HDWR-HANDLE-96MM-BEVELLED-BN



CHROME (96 MM)
HDWR-HANDLE-96MM-BEVELLED-CH



OIL RUBBED BRONZE (96 MM)
HDWR-HANDLE-96MM-BEVELLED-ORB

CURVED



BLACK (96 MM)
HDWR-HANDLE-96MM-CURVED-BK



BRUSHED NICKEL (96 MM)
HDWR-HANDLE-96MM-CURVED-BN



CHROME (96 MM)
HDWR-HANDLE-96MM-CURVED-CH



OIL RUBBED BRONZE (96 MM)
HDWR-HANDLE-96MM-CURVED-ORB

SLIM



BLACK (96 MM)
HDWR-HANDLE-96MM-SLIM-BK



BRUSHED NICKEL (96 MM)
HDWR-HANDLE-96MM-SLIM-BN



CHROME (96 MM)
HDWR-HANDLE-96MM-SLIM-CH



OIL RUBBED BRONZE (96 MM)
HDWR-HANDLE-96MM-SLIM-ORB

WIDE



BLACK (96 MM)
HDWR-HANDLE-96MM-WIDE-BK



BRUSHED NICKEL (96 MM)
HDWR-HANDLE-96MM-WIDE-BN



CHROME (96 MM)
HDWR-HANDLE-96MM-WIDE-CH



OIL RUBBED BRONZE (96 MM)
HDWR-HANDLE-96MM-WIDE-ORB

IMPORTANT HARDWARE NOTE: *Biscotti Raised Panel, Chestnut, Muskoka and Merlot in sizes 30" R & L, 42", 48" and 60" Double Sink are only available with knobs, as handles do not fit on these models.*

CLASSIC



BLACK
HDWR-KNOB-BLACK



BRUSHED NICKEL
HDWR-KNOB-NICKEL



CHROME
HDWR-KNOB-CHROME



OIL RUBBED BRONZE
HDWR-KNOB-BRONZE

MODERN



BLACK
HDWR-KNOB-MODERN-BK



BRUSHED NICKEL
HDWR-KNOB-MODERN-BN



CHROME
HDWR-KNOB-MODERN-CH



OIL RUBBED BRONZE
HDWR-KNOB-MODERN-ORB

LONG CURVED HANDLES for two drawer vanities



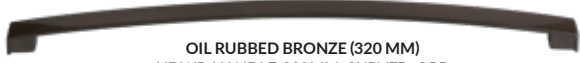
BLACK (320 MM)
HDWR-HANDLE-320MM-CURVED-BK



BRUSHED NICKEL (320 MM)
HDWR-HANDLE-320MM-CURVED-BN



CHROME (320 MM)
HDWR-HANDLE-320MM-CURVED-CH



OIL RUBBED BRONZE (320 MM)
HDWR-HANDLE-320MM-CURVED-ORB



30" Lakewood vanity with
Dover White Quartz top

Dimensions

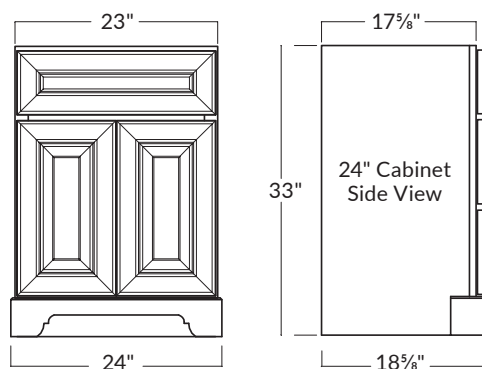
The following measurements are provided to help with the ordering process.

Please allow for $\frac{1}{8}$ " (+/-) variance.

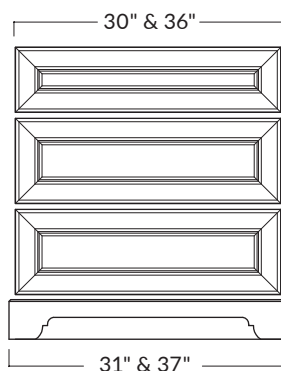
VANITIES

24" SINGLE SINK

(basin top only)

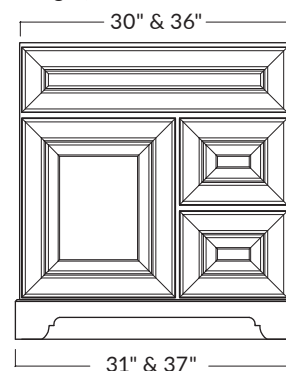


30" OR 36" SINGLE SINK DRESSER STYLE VANITY

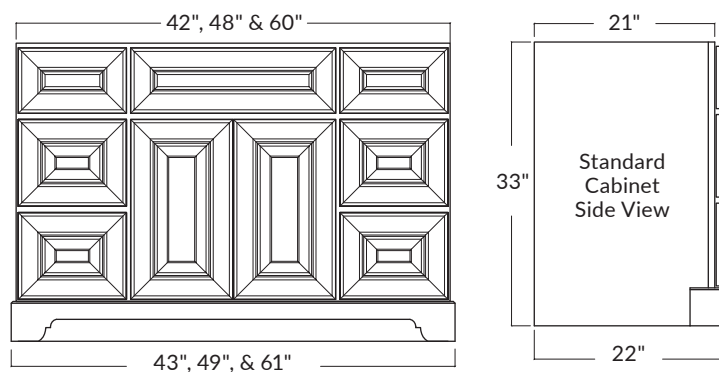


30" OR 36" SINGLE SINK

(order with drawers on left or right)

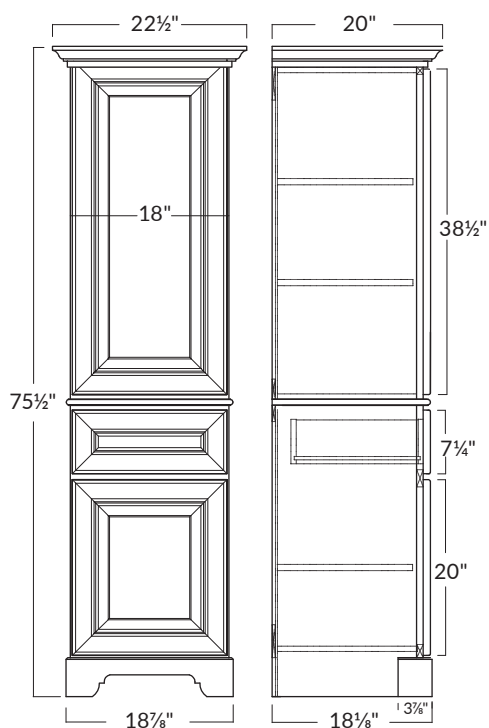


42", 48" & 60" SINGLE SINK

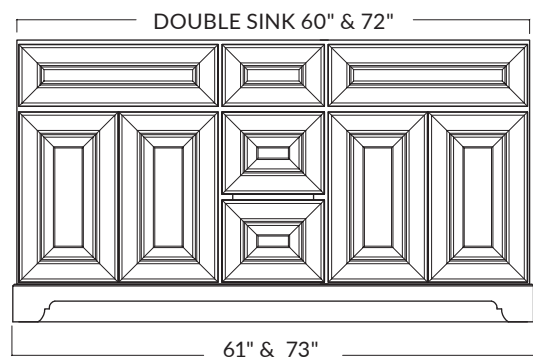


LINEN TOWER

Choose open shelves or an upper door with right or left hinge.

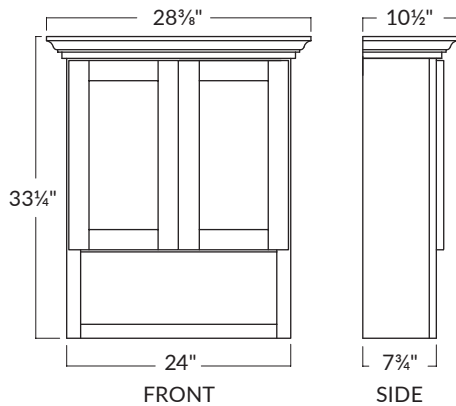


60" OR 72" DOUBLE SINK

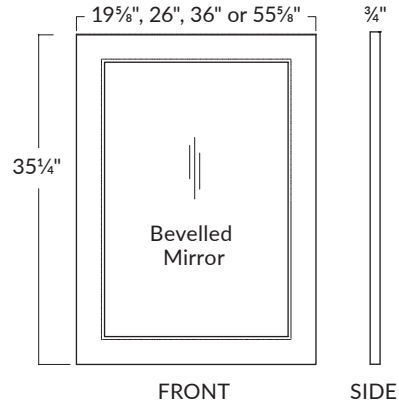


ACCESSORIES

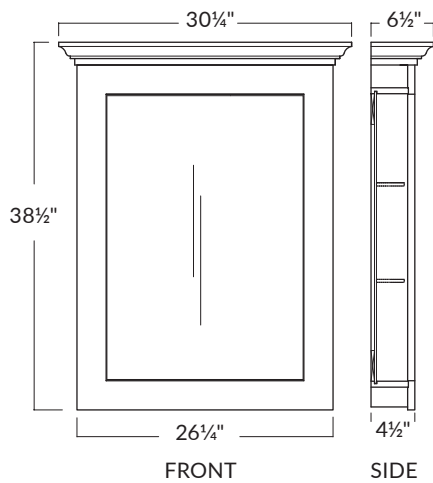
BATH STORAGE CABINET



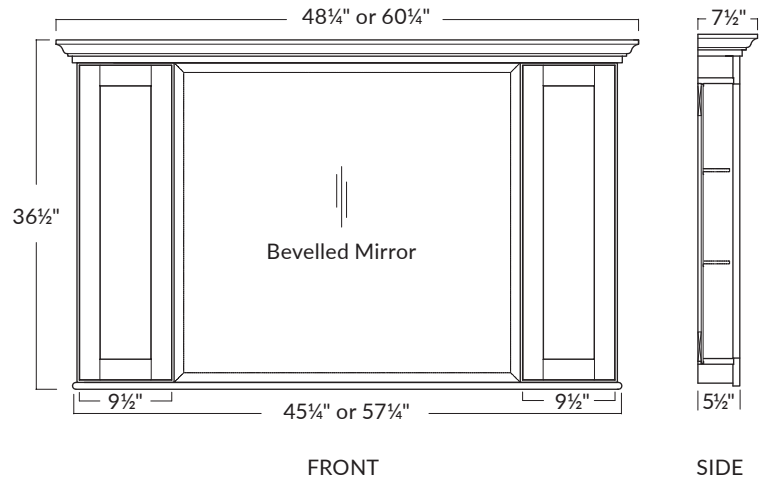
MIRRORS



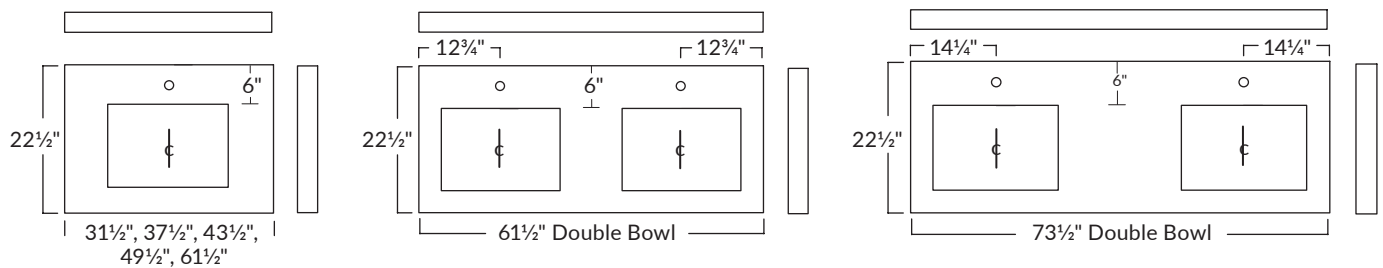
30" MEDICINE CABINET (flushed or recessed)



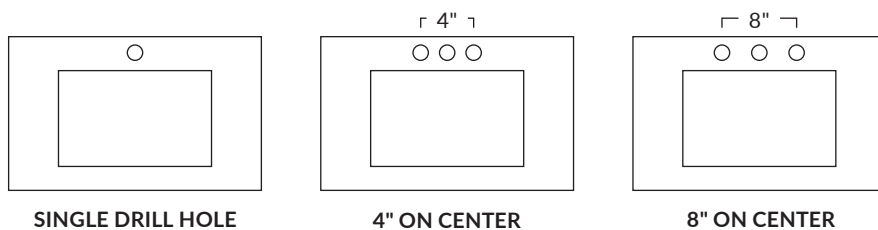
48" AND 60" MEDICINE CABINETS



SINK POSITIONING



FAUCET DRILLING PATTERNS



NOTE: Faucet holes are 1 ³/₈" diameter.

Project Planning & Installation Tips

We recommend a **skilled trades professional** performs the installation of your new vanity. Please refer to the tips below and our on-line videos prior to installation.

1. Accurately measure your bathroom. Make note of plumbing locations, electrical outlets, light fixtures and available wall depth at a doorway. **NOTE:** Our tops are 22½" deep. If your vanity is going next to the toilet, you should allow a minimum of 15" from the center of the toilet to the edge of the vanity.
2. Refer to the layout options on page 31. Using dimensions from page 28 and 29, draw your bathroom to scale. Your dealer is there to assist you with any questions you may have. **NOTE:** The stone vanity tops are 1½" larger than the cabinet. For example a 48" cabinet has a 49½" top, allowing for ¾" per side overhang.
3. Select your cabinet colour, vanity top colour, mirror size, sink colour and choose the desired drilling pattern for your faucets.
4. If your cabinet is up against a wall, don't forget to order a filler for a perfect fit. 1" fillers are free of charge with the purchase of your vanity. 4" fillers are available at an additional charge.
5. When integrating a linen tower and vanity we recommend the installation be performed by a skilled trades professional.
6. Your vanity top comes complete with a matching 4" backsplash and one side splash. For an additional charge vanity tops can be custom cut and re-polished or custom cut to fit between two walls with a second side splash added. Please consult with a sales associate to help you fill out a custom cut vanity top order form.
7. Review and place order with your dealer. Expect delivery within 2 - 3 weeks. Your dealer will have our delivery schedule.



Easy to follow installation videos are available online at:

stonewoodbath.com/videos



LAYOUT OPTIONS

1

Between two walls

A-1

2

Wall on right, open left

A-2

3

Wall on left, open right

A-3

4

Free standing

A-4

A

Vanity only

B

Vanity with Linen Tower (left)

B-1

B-2

B-3

B-4

C

Vanity with Linen Tower (right)

C-1

C-2

C-3

C-4

D

Double Vanity with Linen Tower (centered)

D-1

D-2

D-3

D-4

E

Vanity with Linen Towers

E-1

E-2

E-3

E-4

F

Linen Tower Only

F-1

F-2

F-3

F-4

stonewoodbath.com | 31

Easy Ordering

Follow the steps below to order your new vanity exactly the way you want it.

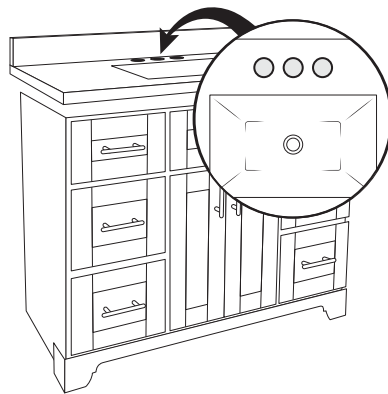
1. CHOOSE YOUR VANITY



2. CHOOSE YOUR STONE VANITY TOP



3. CHOOSE YOUR FAUCET DRILL PATTERN



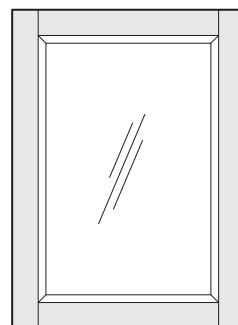
4. CHOOSE YOUR SINK



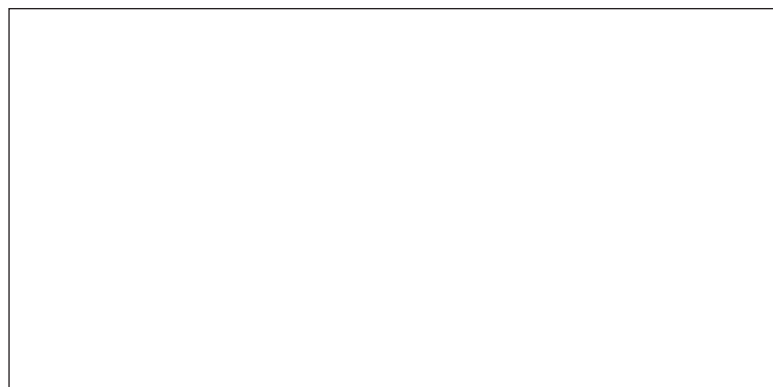
5. CHOOSE YOUR HARDWARE



6. CHOOSE YOUR ACCESSORIES



7. SPEAK TO YOUR SALES ASSOCIATE TO FINALIZE YOUR ORDER.
EXPECT DELIVERY IN 2 - 3 WEEKS (4 WEEKS FOR FIVE SHADES OF GREY).



STONEWOOD
BATH CABINETS



stonewoodbath.com

