

RECESSED INSTALLATION

Step1: Remove the surface mounted kit from the luminaire.

Step2: Bend hang buckle by 90° making it vertical to the rear cover of panel light. Same to 4 hang buckles.(Figure 2)

Step3: Turn off power,remove the ceiling panel. Then place the panel in to the T-bar,ensure the panel is attached to the ceiling.(Figure3)

Step4:Remove appropriate round knock-out(s) and connect conduit to J-box with proper connector(s).

Step5:Put a connector to the end of AC input wire and tightly,the line connect to the connector with the black mark, the natural connect to another,the ground connect to the green wire.(Figure4)

For 0-10V Dimming

Compatible with 0-10V dimmer

The driver PUR (D+) to the dimmer+(PUR),and the

driver GRY(D-)to the dimmer-(GRY)

Connect the wires with terminal cap as shown in wiring diagram (Figure 6).

Incoming insulated dimming conductors shall have voltage rated at least equal to the branch voltage.

For Step Dimming

please use switch to dim and don't need to connect the dimming wire. Dimming step: **Fristly**, Turn on to 100% brightness,

Secondly,It takes about 0.5~2 seconds from turn off the light to next trun on and lamp is in 50% brightness, **At last** ,It takes about 0.5~2 seconds from turn off the light to next trun on and lamp 10% brightness. (Figure 7)

Note: For cycle of step dimming, wait until the lamp is in brightness.

For failure of step dimming, turn off the lamp and turn on after 3 second.

Step7:Push all wires back into the junction box,Close J-BOX for cap (Figure 5).

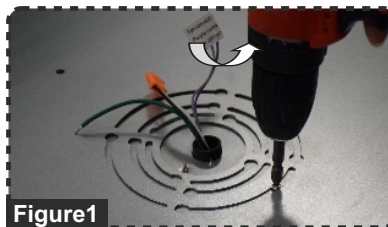


Figure1

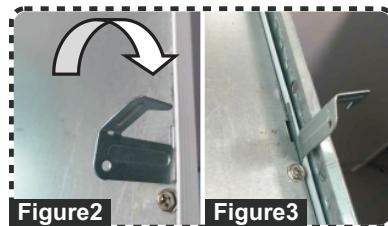


Figure2

Figure3

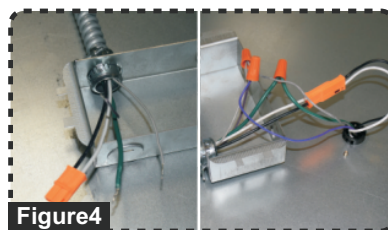


Figure4

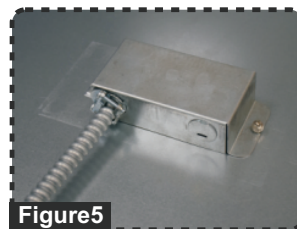


Figure5

WIRING DIAGRAM

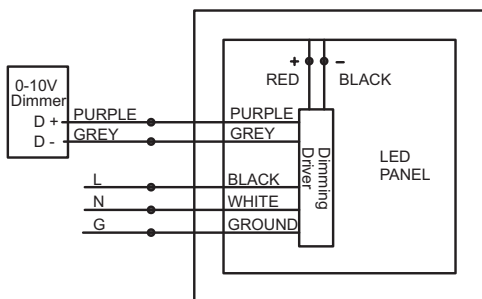
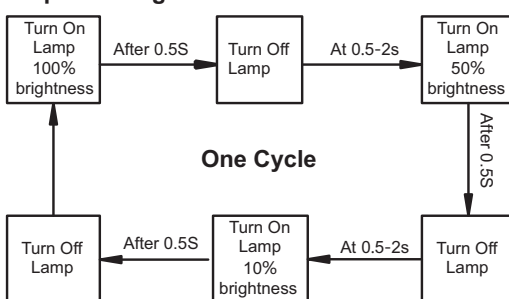


Figure6

Step Dimming



Note: After 3s turn on lamp to 100% brightness.

Figure7

Risk of fire or electric shock. The electrical rating of these products are 120-277 VAC standard, the installer must determine whether they have 120-277VAC at the luminaire before installation. Knowledge of luminaires electrical systems required. If not qualified, do not attempt installation. Contact a qualified electrician. To prevent wiring damage or abrasion, do not expose wiring to edges of sheet metal or other sharp objects. Disconnect power before installing the product or servicing it. Wait until fixture has cooled down before installing or servicing the fixture.



A Canadian
Manufacturer



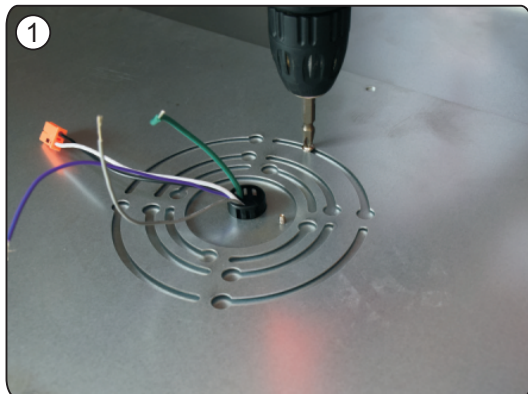
info@ecopowered.com www.ecopowered.com
1.800.564.8086



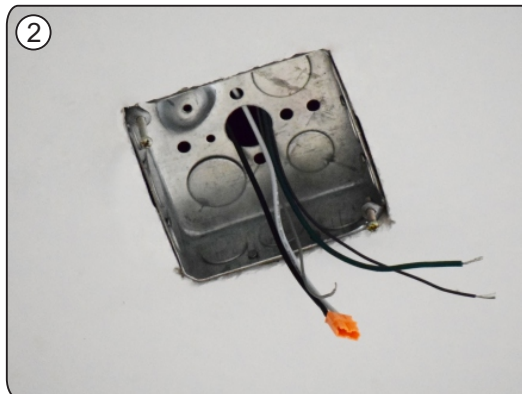
ecopower

Surface Mounted Kit Installation

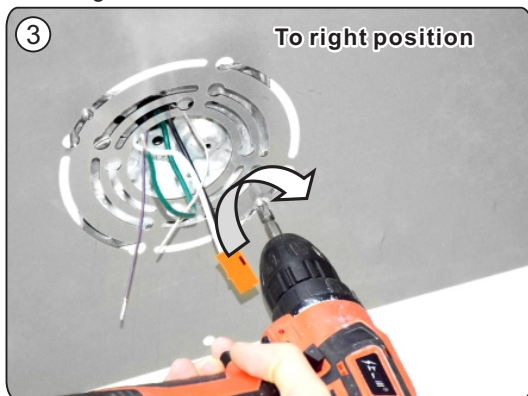
Step1: Remove the surface mounted kit from the luminaire.



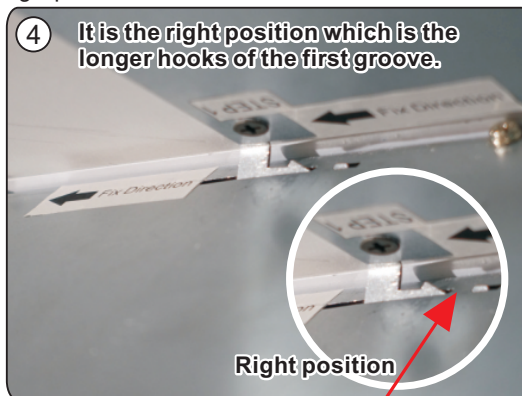
Step2: Turn off power. Insert the L,N wires of the J-box into the male connector.



Step3: Align the holes on the surface mounted kit with the hole on the J-box. Tighten 2#8-32 screws, rotate the plate to your right position and lots of KA3.5*20mm screws into the ceiling and make the kit flush with the ceiling.



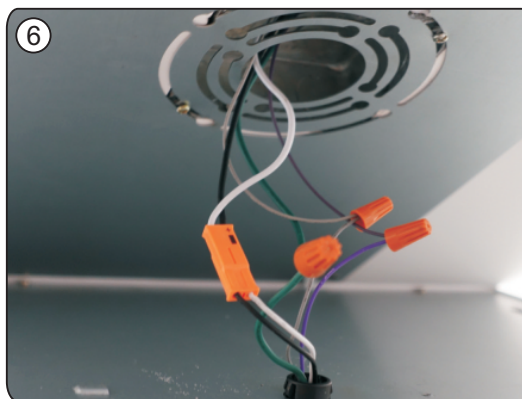
Step4: Align the 2 longer hooks on the metal plate with the longer hole on the luminaire (Look at the metal plate and the luminaire with the 'STEP 1' mark). Slightly move the luminaire forward and make sure the hooks are in the right position.



Step5: Fix the metal string on the hook. (Fig.2)



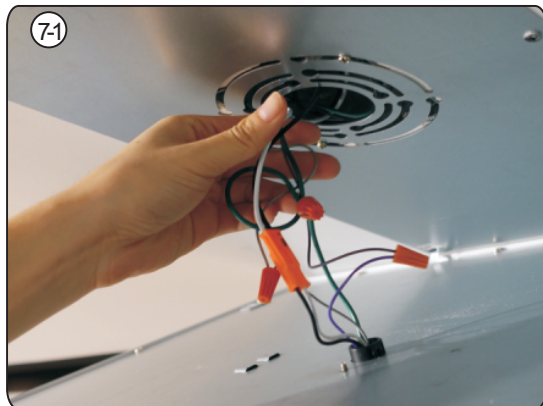
Step6: Plug the female connector of the luminaire into the male connector of the AC input wire. The Ground connects to Green wire. Dimming wires connect according to the same wire color.



Risk of fire or electric shock. The electrical rating of these products are 120-277 VAC standard, the installer must determine whether they have 120-277VAC at the luminaire before installation. Knowledge of luminaires electrical systems required. If not qualified, do not attempt installation. Contact a qualified electrician. To prevent wiring damage or abrasion, do not expose wiring to edges of sheet metal or other sharp objects. Disconnect power before installing the product or servicing it. Wait until fixture has cooled down before installing or servicing the fixture.

FLP - FLATLINE LED PANEL WITH INTEGRATED DRIVER

Step7:Put the wire into the J-box.



Step8:Push the luminaire on the ceiling. Make sure the 4 hooks are inside the luminaire and push forward the luminaire until you hear a clicking sound.



Risk of fire or electric shock. The electrical rating of these products are 120-277 VAC standard, the installer must determine whether they have 120-277VAC at the luminaire before installation. Knowledge of luminaires electrical systems required. If not qualified, do not attempt installation. Contact a qualified electrician. To prevent wiring damage or abrasion, do not expose wiring to edges of sheet metal or other sharp objects. Disconnect power before installing the product or servicing it. Wait until fixture has cooled down before installing or servicing the fixture.