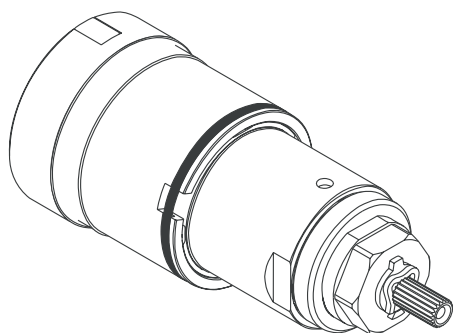


Installation Instructions / Warranty



ThermoBalance Valve Thermoelement

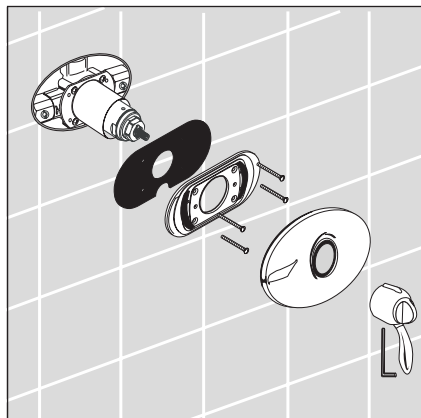
88501000 ThermoPlus
88585000 ThermoBalance I
88586000 ThermoBalance II
88500000 ThermoBalance III

hansgrohe

Interaktiv ThermoBalance Valve Thermoelement

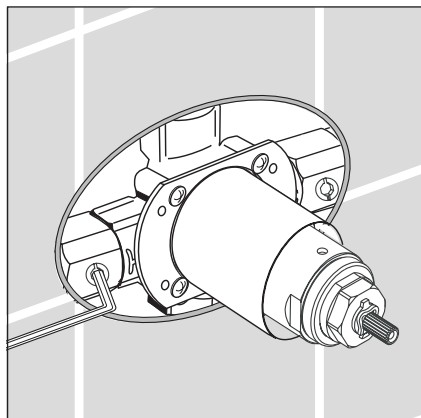
88501000	ThermoPlus
88585000	ThermoBalance I
88586000	ThermoBalance II
88500000	ThermoBalance III

Installation



Use a 3 mm Allen wrench to loosen the set screw on the handle.

Remove the trim. Put it in a safe place.

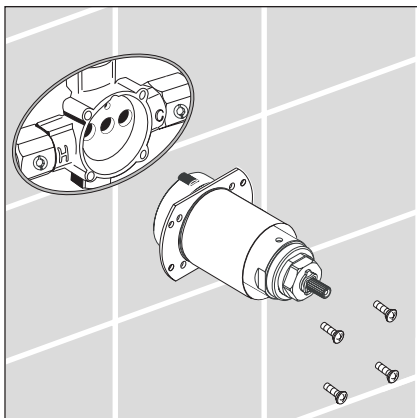


Close the stops with a 3 mm Allen wrench.

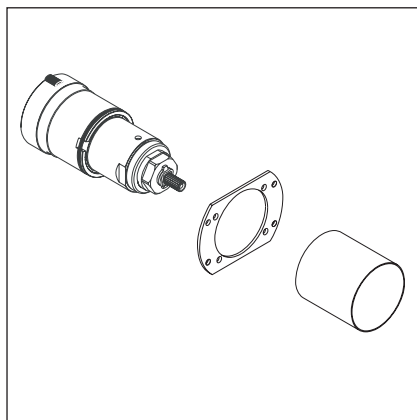
If the valve does not have stops, shut off the water at the main.

Remove the thermoelement.

Make sure that the blue sealing gasket remains on the back of the thermoelement. If it is still inside the valve rough, pull it out.



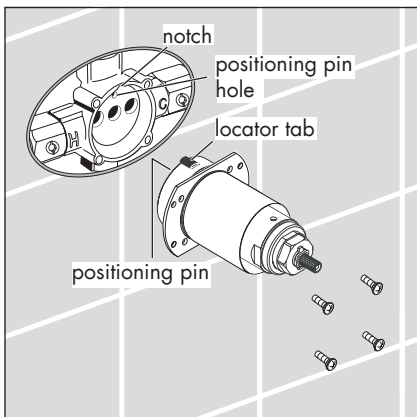
Remove the sleeve and retainer plate from the old element. Carefully install them on the new thermoelement.

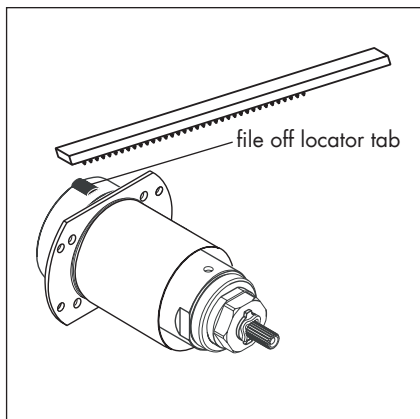


Install the new thermoelement on the valve.

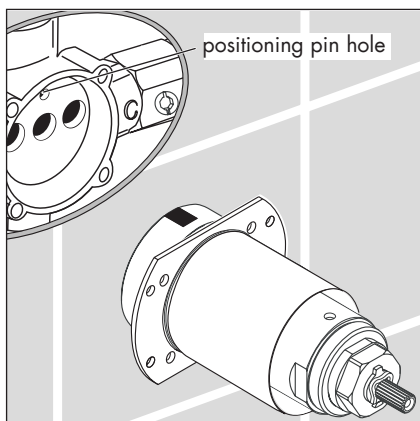
ThermoPlus/ThermoBalance I only:
the current TP and TB I cartridges have both a positioning pin (on the back of the thermoelement) and a locator tab.

The locator tab must go straight into the notch, and the positioning pin must go straight into the positioning pin hole.

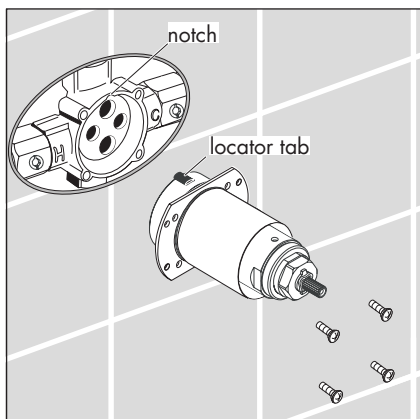




Older TP/TB I roughs have only the hole for the positioning pin – they do not have a notch for the locator tab. If you have an older rough, carefully file the black plastic locator tab off of the new cartridge. Be careful not to damage the cartridge.



Install the cartridge. To prevent damage to the cartridge, make sure that the positioning pin goes straight into the hole.



ThermoBalance II and ThermoBalance III:

Make sure that the locator tab goes straight into the notch.

All models: Tighten the cartridge retainer plate screws evenly with a manual screwdriver, in a diagonal pattern.

Turn on the water and check for leaks.

Reinstall the trim.

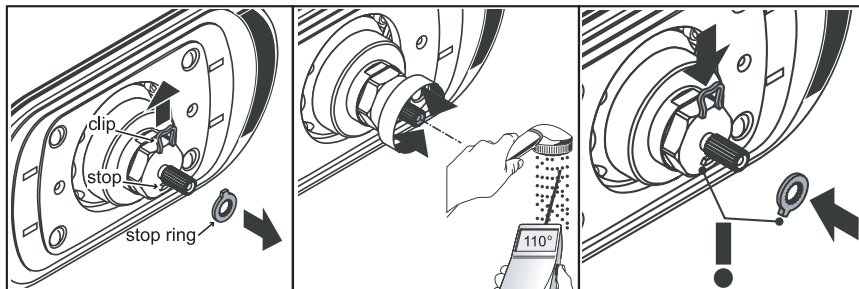
Set the High Temperature Limit Stop

Turn the water on using the handle. Remove the handle.

Remove the clip and stop ring from the stem.

Turn the stem until the water coming out is the desired maximum high temperature – usually about 110°F. Clockwise = cooler, counter-clockwise = warmer.

Reinstall the stop ring so that it is against the stop. Reinstall the clip.



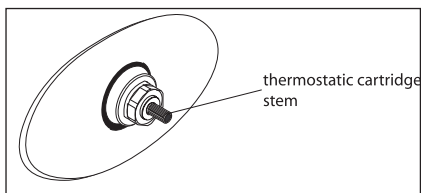
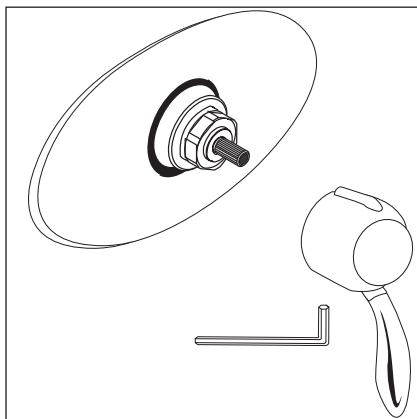
Set the Maximum High Temperature (ThermoPlus only)

Install the handle. Tighten the set screw.

Turn the handle as far to the left as it will go.
Remove the handle.

Turn the stem until the water coming out is the
desired high temperature, usually 110°F.

Reinstall the handle. Tighten the set screw.
Turn the handle to the off position.



Justify the Handle (ThermoBalance I, II, III)

Use the handle to turn the water on. Place a thermometer in the water stream.

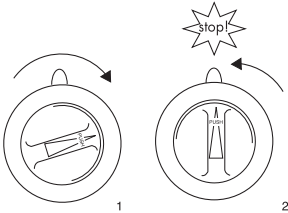
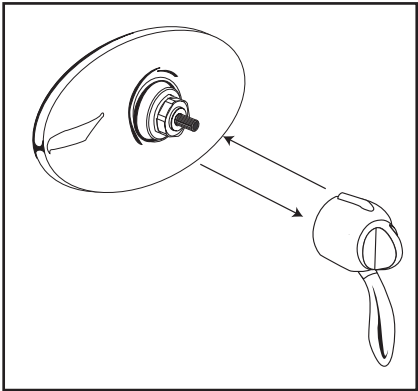
Turn the temperature control knob until the water is 100°F.

Turn the water off using the lever part of the handle.

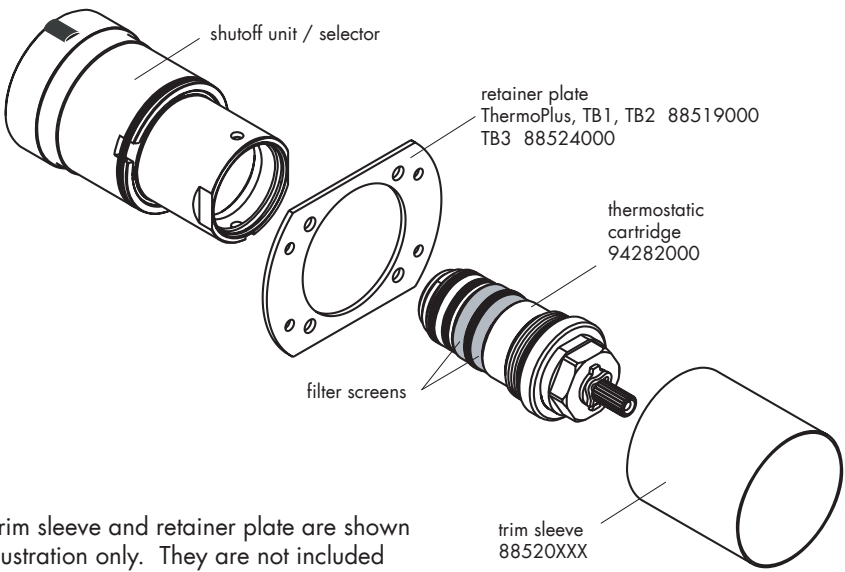
Remove the handle from the valve.

Turn the temperature control knob on the handle 1/2 turn or so clockwise, then turn it back counter-clockwise *without pressing inward on it*, until it is straight up and down and hits the 100° safetystop.

Reinstall the handle. Tighten the handle screw.



The Thermoelement



The trim sleeve and retainer plate are shown for illustration only. They are not included with the new thermoelement.

Limited Lifetime Consumer Warranty

This product has been manufactured and tested to the highest quality standards by Hansgrohe, Inc. ("Hansgrohe"). This warranty is limited to Hansgrohe products which are purchased by a consumer in the United States after March 1, 1996 and installed in either the United States or Canada.

WHO IS COVERED BY THE WARRANTY

This warranty extends to the original consumer purchaser only.

WHAT IS COVERED BY THE WARRANTY

This warranty covers only your Hansgrohe manufactured product. Hansgrohe warrants this product against defects in material or workmanship as follows: Hansgrohe will repair at no charge for parts only or, at its option, replace any product or part of the product which proves defective because of improper workmanship and/or material, under normal installation, use, service and maintenance. If Hansgrohe is unable to provide a replacement and repair is not practical or cannot be timely made, Hansgrohe may elect to refund the purchase price in exchange for the return of the product.

LENGTH OF WARRANTY

Replacement or repaired parts of products will be covered for the term of this warranty as stated in the following two sentences. If you are a consumer who purchased the product for use primarily for personal, family, or household purposes, this warranty extends for as long as you own the product and the home in which the product is installed. If you purchased the product for use primarily for any other purpose, including, without limitation, a commercial purpose, this warranty extends only (i) for 1 year, with respect to Interaktiv and Retroaktiv products and (ii) for 5 years, with respect to AXOR, ShowerPower and Pharo products.

THIS WARRANTY DOES NOT COVER and HANSGROHE WILL NOT PAY FOR:

- A. Conditions, malfunctions or damage not resulting from defects in material or workmanship.
- B. Conditions, malfunctions or damage resulting from (1) improper installation, improper maintenance, misuse, abuse, negligence, accident or alteration, or (2) the use of abrasive or caustic cleaning agents or "no rinse" cleaning products, or the use of the product in any manner contrary to the product instructions.
- C. Labor or other expenses for the disconnection or return of the product for warranty service, or for installation or reinstallation of the product.
- D. Accessories or related products not manufactured by Hansgrohe.

TO OBTAIN WARRANTY SERVICE

Contact your Hansgrohe retailer, or write to Technical Service at:

Hansgrohe Inc.
1492 Bluegrass Lakes Parkway
Alpharetta GA 30004

Or, call Hansgrohe toll-free at (800) 334-0455.

In requesting warranty service, you will need to provide

- 1. The sales receipt or other evidence of the date and place of purchase.
- 2. A description of the problem.
- 3. Delivery of the product or the defective part, postage prepaid and carefully packed and insured, to Hansgrohe Inc. 1492 Bluegrass Lakes Parkway, Alpharetta, Georgia 30004, Attention: Technical Service, if required by Hansgrohe.

When warranty service is completed, any repaired or replacement product or part will be returned to you postage prepaid.

EXCLUSIONS AND LIMITATIONS

REPAIR OR REPLACEMENT (OR, IN LIMITED CIRCUMSTANCES, REFUND OF THE PURCHASE PRICE) AS PROVIDED UNDER THIS WARRANTY IS THE EXCLUSIVE REMEDY OF THE PURCHASER. HANSGROHE NEITHER ASSUMES NOR AUTHORIZES ANY PERSON TO CREATE FOR IT ANY OBLIGATION OR LIABILITY IN CONNECTION WITH THIS PRODUCT.

HANSGROHE SHALL NOT BE LIABLE TO PURCHASER OR ANY PERSON FOR ANY INCIDENTAL, SPECIAL, OR CONSEQUENTIAL DAMAGES, ARISING OUT OF BREACH OF THIS WARRANTY OR ANY IMPLIED WARRANTY (INCLUDING MERCHANTABILITY).

Some States do not allow the exclusion or limitation of incidental or consequential damages, so the above limitation or exclusion may not apply to you.

This warranty gives you specific legal rights and you may have other rights which vary from State to State.

You may be required by law to give us a reasonable opportunity to correct or cure any failure to comply before you can bring any action in court against us under the Magnuson-Moss Warranty Act.

PRODUCT INSTRUCTIONS AND QUESTIONS

Upon purchase or prior to installation, please carefully inspect your Hansgrohe product for any damage or visible defect. Prior to installing, always carefully study the enclosed instructions on the proper installation and the care and maintenance of the product. If you have questions at any time about the use, installation, or performance of your Hansgrohe product, or this warranty, please call or write to us at the toll-free number and address printed above.

hansgrohe

Hansgrohe, Inc. • 1490 Bluegrass Lakes Parkway • Alpharetta, GA 30004
Tel. 770 360-9880 • Fax 770 360 9887

www.hansgrohe-USA.com