

murdock[®]

SINCE 1853



Bottle Fillers, Water Coolers and Drinking Fountains



MODEL NO. BFEZ168-BCD
EZReach Compact Chilled Bottle Filler



CUSTOM COLORS
H₂O-To-Go!® Indoor Bottle Filler
with Barrier-Free Water Cooler
BF12-BCD with A171



MODEL AL81.8-BF SERIES
In-wall Ligature Resistant
Fountain/Bottle Filler





**MODEL NO.
BF12-BCD WITH
A171 SERIES**



**MODEL NO.
BFEZ168-BCD**



FEATURES AND BENEFITS

H₂O-To-Go!® FEATURES

- Hygienic sensor operation
- Multiple filtration options
- Maintenance friendly design
- LED-illuminated backplash
- Universal Mounting Bracket
 - Alcove-Style Antimicrobial Backsplash

EZREACH[®]

COMPACT SURFACE MOUNTED CHILLED BOTTLE FILLER



Patent Pending

MODEL NO.
BFEZ168-BCD
EZReach Compact
Chilled Bottle Filler

The Murdock[®] EZReach[®] compact bottle filler is two-thirds the size of standard bottle fillers and universally designed to fit most applications.

FEATURES AND BENEFITS

- Sanitary sensor operation
- Crisp, chilled water
- Surface-mounted for easy install
- Front access panel for easy maintenance
- Perfect for kids!
- 12" wall projection (instead of 18")



Custom COLORS & LOGOS



*H²O-To-Go!® Indoor Bottle Filler
with Barrier-Free Water Cooler
BF12-BCD with A171 Series*



*H²O-To-Go!® Wall Mount Indoor Bottle Filler
BF16-BCD*

POWDERCOATED LOGOS

For a look that's more personal, we can integrate powder coated logos, colors and decals on most any Murdock® unit. Simply provide us with your team, company or personal logo for a truly unique drinking fountain.

STANDARD FINISHES

Visit www.murdockmfg.com to see all available color and finish options for our products. Finishes not available on every product.



CUSTOM COLORS

Thirsty for some color? Custom color powder coats bond with Murdock's seamless drinking fountains and bottle fillers for an eye-catching alternative that is built to last.

H²O-To-Go!® Indoor Bottle Filler with Barrier-Free Water Cooler BF12-BCD with A171



Stainless Steel ADA Wall Mount Water Cooler with matching Sensor Operated Bottle Filler A171408F-BF2S

CUSTOM/MATCH FINISHES

Looking for a specific color to match an existing wall or color pattern? No problem. Murdock has the unique ability to match all Drinking Fountains, Water Coolers and Bottle Fillers to any Pantone® color swatch. Color match your unit so that you don't have to design your space around it... make it a part of the room!

murdock
SINCE 1853

Enviro-Glaze®

Murdock Manufacturing has developed a color coating system which will allow you to purchase durable stainless steel fixtures in designer colors. The Enviro-Glaze® finish is a superior finish which gives you a colorful and functional alternative to a stainless steel finish.

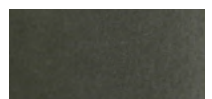
Color Selection



Silver Sage Patina
EG-01 *



Quicksilver
EG-02



Autumn Bronze
EG-03



Yukon Brass
EG-04



River-Rock Granite
EG-05



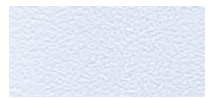
Raindrop
EG-06



Onyx (black)
EG-07



Textured Onyx
(black) EG-08



Diamond White
EG-09



Snow White
EG-10 *



Pearl White
EG-11 *



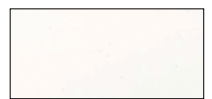
Solar Flame (yellow)
EG-12



Alpine Lake (blue)
EG-13



Firehouse Red
EG-15 *



Matte White
EG-26



Textured Fairway
Green EG-27



Textured Firehouse
Red EG-28



Textured Alpine
Lake EG-29

*For Indoor Use Only

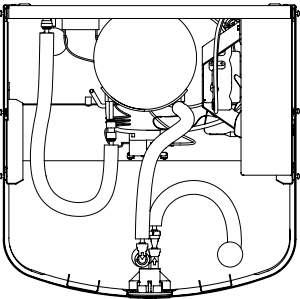
Note: Printed color swatches may differ slightly from actual Enviro-Glaze® coating. Contact your local representative for samples.

MURDOCK MAINTENANCE ADVANTAGE

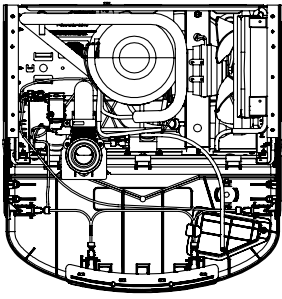
Easy Maintenance + Fewer Parts = MORE SAVINGS!

- LESS TIME:** Routine maintenance takes 2 minutes
- LESS MAINTENANCE:** Access water shut off, cartridge, and filter from the front without removing the shroud!
- LESS EXPENSE:** Fewer parts to repair and less expensive parts
- LESS WORK:** Universal rough-in will match existing footprints for easy retrofit
- WATER SHUT OFF:** Exclusive, patented Auto-Stop feature
- PREMIUM FEATURES AT A VALUE PRICE**

OURS VS THEIRS



Murdock Water Cooler
27 Parts



Competitor's Water Cooler
60+ Parts

murdock® BOTTLE FILLERS
SINCE 1853
So light & easy to service!



Easy access with only two top screws to loosen
Self-holding, lightweight face tilts forward for easy maintenance

murdock® **AUTO-STOP**
SINCE 1853



AUTO-STOP allows cartridge and strainer service without removing cooler deck to access water supply stop

PATENT No. 10,100,933



See
THE KEY THAT STANDS UP FOR THE MAINTENANCE STAFF

One key tool unlocks the Murdock® Maintenance Advantage features on our A171 and A172 water coolers. This tool removes the pushbutton, which automatically stops the water so you can:

- Remove and clean the strainer
- Remove and replace the valve cartridge
- Lower the EZ Door™ and replace the filter.

ALL WITHOUT GETTING DOWN ON THE FLOOR AND REMOVING THE SHROUD.

murdock®
SINCE 1853

OTHER A171 AND A172 MAINTENANCE ADVANTAGE FEATURES



Replace your Bottle Filler with a BF12!

- No need to drill new holes — the Murdock® BF12 matches the hole configuration of many existing bottle fillers
- Compatible with many existing water cooler models
- Rough-ins match existing models for easy installation

Number of Parts

OURS: Only 27 parts

THEIRS: 60+ parts



Replace your Water Cooler with an A17 Series!

- Universal Bracket is compatible with several popular water cooler brands
- Reuse the existing mounting bracket and screw patterns

Single Mechanical Button

OURS: Single mechanical button with no complicated maintenance.

THEIRS: Three electronic buttons that can complicate maintenance.

Replace the Filter with Ease

- EZ Door™ filter allows replacement in four quick steps - unlatch door, remove filter, insert new filter, latch door
- No removing the shroud

Refrigeration via Tube Evaporator

- Wraps around the water tube
- Eliminates tank of stored water that could potentially harbor bacteria

OURS: Refrigeration tube to chill water is wrapped around the water tube. Coil keeps sediment moving through to the strainer.

THEIRS: Chilling tank has standing water that can allow sediment to collect in the bottom and possibly become contaminated.



*Barrier-Free Stainless Steel
Vandal-Resistant Wall Mount
Water Cooler A171408S-VR*

A17-VR Series

- All-Stainless steel cabinet
- Welded louver screens
- Tamper resistant fasteners
- Available as Single and Universal Bi-Level



*Barrier-Free Vandal-
Resistant Button Wall
Mount Water Cooler
A171108S-VR*

A17FGVR Series

- 14-gauge stainless steel welded construction
- Removable louver screens for internal access
- Tamper resistant fasteners
- Vandal resistant
- Available as Single and Bi-Level



*Barrier-Free 14-Gauge
Stainless Steel Wall
Mount Water Cooler
A171408S-FG-VR*

*Barrier-Free Vandal-Resistant
Button Wall Mount Bi-Level
Water Cooler A172108S-VR*





*Stainless Steel ADA Wall
Mount Bi-Level Water Cooler
with Flexible Bubbler
A172408F-UBL*

A172 Series - Enhanced Design

- Bi-level construction, self-contained with front push button activation
- Can be installed left unit high or right unit high with no additional parts
- Flexible, anti-microbial non-squirt bubbler delivers 0.3 GPM flow
- Auto-stop allows cartridge and strainer service without shutting off water
- Stainless steel or granite powder coated galvanized steel cabinet and bottom shroud
- ADA compliant



*Barrier-Free Wall Mount
Universal Bi-Level Water
Cooler Granite Finish with
A172108F-UBL*

Water Cooler

And Bottle Filler Combinations



H²O-To-Go!® Indoor Bottle Filler with Barrier-Free Water Cooler (BF12-BCD with A171)

Vandal-resistant stainless steel body

Custom colors and logos available

Cost-effective

FEATURES & BENEFITS

- 1 "Replace Filter" indicator message
- 2 Bottle Counter Display (BCD), optional
- 3 Automatic LED lighting (standard) with BCD option
- 4 No-splash 1 gpm laminar flow
- 5 Sensor-activated water flow
- 6 Recessed curvature provides easy filling for all bottle sizes
- 7 Grey trim allows for seamless components
- 8 Antimicrobial flexible bubbler, push button and backsplash
- 9 Single basin drain to lessen potential bacterial growth

Patent No. D873,608



Barrier-Free water cooler with
H²O-To-Go!® indoor bottle filler
BF12-BCD with A171

(Shown with optional Bottle
Counter Display)

Bi-Level Barrier-Free Water Coolers with H²O-To-Go!® Indoor Bottle Filler BF12-BCD with A172

(Shown with optional Bottle Counter Display)



BF2S

Uses refrigerated water from host water cooler

Environmentally friendly design reduces plastic bottle consumption

ADA compliant

FEATURES & BENEFITS (for BF2S)

- 1 18 gauge stainless steel
 - 2 Touch-free sensor activation
 - 3 1 gpm quick fill flow rate allows users to fill water bottles quickly
 - 4 Bottle counter displays the number of plastic bottles saved
- Laminar flow eliminates splash
Removable top for easy installation and maintenance
Works with A171, VR and others

*Barrier-Free Wall Mount Water Cooler with Bottle Filler
A171408F Unit shown in optional custom powdercoated blue*

Bottle Fillers

Stand Alone and Water Cooler Mounted

BF16 SERIES - WALL MOUNT

Stand alone H²O to-go!® indoor bottle filler
(Shown with optional Bottle Counter Display)

- 1 Easy to read digital filter notice and Bottle Counter Display (optional BCD)
 - 2 Automatic LED lighting (standard) with BCD option
 - 3 Sensor-activated water flow
 - 4 Recessed curvature provides easy filling for all bottle sizes
 - 5 The catch tray offers a place to set your bottle when filling
 - 6 Heavy duty vandal-resistant stainless steel body
- Custom colors and logos available
 - Optional - Manual push button
 - Filtration options available
 - Cost-effective
 - Antimicrobial backslash



H²O-To-Go!® Stand-Alone
Surface Mount Sensor Operated
Bottle Filler BF16



*All Stainless Steel Sensor Operated Bottle Filler
BF2S-BCD (with optional bottle counter display)*

BF2S

- Uses refrigerated water from host water cooler
- Environmentally friendly design reduces plastic bottle consumption
- ADA compliant
- Heavy duty design



*H²O-To-Go!® Deck Mount
Sensor Operated Bottle
Filler BF12-BCD*

H²O-To-Go! BF12-BCD

- No-splash laminar flow provides quick 1 gpm flow rate
- Automatic LED lighting brightens when bottle is detected, (when Bottle Counter Display [BCD] is specified)
- Grey trim allows for seamless components
- Deck mount design
- Uses refrigerated laminar flow water from host water cooler
- Manual push button optional



BF1S *All Stainless Steel Push button
Operated Deck Mount Bottle Filler*

- Deck mount design
- Uses refrigerated laminar flow water from host water cooler
- 100% lead and brass free and ADA compliant



*Heavy-Duty, Deck-Mounted,
Touchless, Universal, Compact Water
Bottle-Filling Station*

BF2SC

- Compact Design and Adjustable Tray Retrofits Existing Drinking Fountains.
- Hands Free Sensor Operation
- Heavy Duty Stainless Steel Cabinet
- 1 GPM Fill Rate (Min. Set Pressure 40 PSI)
- Lead Free
- Optional push button activation available

BOTTLE FILLERS Refrigerated

BF48

- Sensor operation delivers a 1.0 GPM flow rate
- Can be mounted in a 4" or larger wall space for simple installation virtually anywhere
- Slim and trim, vandal resistant design blends into any environment
- Fabricated of type 304 stainless steel polished to a satin finish
- ADA compliant with forward and side reach requirements
- Integral 8 GPH chiller mounted below
- Custom colors and logos available



*Semi-Recessed Sensor
Chilled Bottle Filler BF48*



BF38

- Push button operation delivers a 1.0 GPM flow rate
- Semi-recessed, can be mounted in a 4" or larger wall space for simple installation virtually anywhere
- Slim and trim, vandal resistant design blends into any environment
- Fabricated of type 304 stainless steel polished to a satin finish
- ADA compliant with forward and side reach requirements
- Integral 8 GPH chiller mounted below

*Semi-Recessed Push Button
Chilled Bottle Filler BF38*



H2O-To-Go!® Stand-Alone Wall Surface
Mount Sensor Operated Refrigerated
Bottle Filler Model BF168



Murdock's Maintenance Advantage® ensures easy fixes in less time and fewer necessary repair parts, all at less cost!



So light & easy to service!

- Easy access with only two top screws to loosen
- Self-holding, lightweight face tilts forward for easy maintenance



Very low profile!

Stand-alone H²O-To-Go!® indoor bottle filler (BF16) with remote chiller (A9100080-A)

- 8 gph Chiller
- Bottle Filler shown with Bottle Counter Display Option
- Optional filtration available



Patent No. D873,608

Drinking Fountains

With Bottle Fillers

A151 & A151.8 Series

- Barrier free wall mount construction
- 18 gauge, type 304 stainless steel with a brushed finish
- Unique two-piece contoured rectangular bowl
- Integral P-trap, stainless steel bubbler and bottle filler
- ADA compliant

Rounded Box Barrier-Free Wall Mount Drinking Fountain with Sensor Activated Bottle Filler A151400S-BF4-BCD



Rounded Box 14-Gauge Stainless Steel Box Barrier-Free Wall Mount Bi-Level Drinking Fountain A152400S-FG-BF4-BCD



Rounded Box Chilled Barrier-Free Wall Mount Bi-Level Drinking Fountain with Sensor Activated Bottle Filler A152408F-BF4-W32-BCD

A151 & A151.8 Series



- Barrier free wall mount construction
- 18 gauge, type 304 stainless steel with a brushed finish
- Unique two-piece contoured rectangular bowl
- Integral P-trap, stainless steel bubbler and bottle filler
- ADA compliant



*Rounded Box Chilled
Barrier-Free Wall
Mount Drinking
Fountain with Sensor
Activated Bottle Filler
A151408S-BF4-BCD*



*Oval Bowl Barrier-Free
Wall Mount Drinking
Fountain with Sensor
Activated Bottle Filler
A131400S-BF4-BCD*

A131 & 131.8 Series

- 18 gauge, type 304 stainless steel with a brushed finish
- Activated by self-closing front push button
- Unique two-piece contoured round bowl
- Integral P-trap, stainless steel bubbler and bottle filler
- ADA compliant



*Oval Bowl Chilled
Barrier-Free Wall Mount
Bi-Level Drinking Fountain
with Sensor Activated
Bottle Filler
A132408S-BF4-W32-BCD*



*Oval Bowl Barrier-Free
Wall Mount Drinking
Fountain with Sensor
Activated Bottle Filler
A131400S-BF4-BCD*



*Oval Bowl Chilled
Barrier-Free Wall
Mount Drinking
Fountain with
Sensor Activated
Bottle Filler
A131408S-BF4-BCD*

A132W32 & A132.8 Series

- Wall mount bi-level construction
- 18 gauge, type 304 stainless steel with a brushed finish
- Activated by self-closing front push button
- Integral P-trap, stainless steel bubbler and bottle filler
- ADA compliant





Drinking Fountains



A441 Series

ADA contoured box fountain constructed of 18-gauge, type 304 stainless steel

- Stainless steel anti-rotational, non-squirt bubbler
- Integral P-trap
- 14-gauge model available



14-Gauge Stainless Steel
Box Wall Mount Drinking
Fountain A441400S-FG



A441FG Series

Short contoured box fountain constructed of 14-gauge type 304 stainless steel

- Stainless steel anti-rotational, non-squirt bubbler
- Integral P-trap





*Stainless Steel Recessed
Drinking Fountain with Cuspidor
A481400S-CUSP
(for drinking fountain & cuspidor
-also available separately)*

A481 Series

- Recessed 18-gauge, type 304 stainless steel construction with 16-gauge frame
- Stainless steel bubbler
- Optional cuspidor (-CUSP)



*Push Button Bubbler
Wall Mounted
Drinking Fountain
GWB24*

GWB24

- Round bowl 18-gauge, type 304 stainless steel construction
- Stainless steel push button bubbler



A421 Series

- Round fountain constructed of 18-gauge, type 304 stainless steel
- Stainless steel anti-rotational, non-squirt bubbler
- Integral P-trap



*Oval Bowl Wall Mount
Drinking Fountain
A421400S*



*Square Wall Mount
Drinking Fountain
A4B1400Q*

A4B1Series

- Simple and economical 18-gauge, type 304 stainless steel construction
- Stainless steel push button bubbler
- Optional P-trap (-PT1)



*Square Wall Mount Drinking
Fountain A4A1400Q*

A4A1 Series

- Economical square 18-gauge, type 304 stainless steel construction
- Great choice for small spaces
- Push button bubbler



DRINKING FOUNTAINS

Accessible and Recessed



A181 Series

- 18-gauge, 304 stainless steel cabinet with 16-gauge frame
- Stainless steel, non-squirt bubbler
- Optional cuspidor (-CUSP)
- ADA compliant

Barrier-Free Stainless Steel Recessed Drinking Fountain with Cuspidor A181400S-CUSP

(for drinking fountain & cuspidor - also available separately)



Oval, Barrier-Free, Bi-Level Wall Mount Drinking Fountain - Sensor Activated

A132-SO Series

- 18-gauge, type 304 stainless steel wall mount design with 32" back panel
- Stainless steel bubbler and integral P-trap
- ADA compliant
- Patented Integral Stop
- Sensor activation



Oval Bowl Barrier-Free Wall Mount Drinking Fountain A131400S

A131 Series

- Round, wall mount design
- Stainless steel anti-rotation, non-squirt bubbler and integral P-trap
- ADA compliant



DRINKING FOUNTAINS

Accessible

14-Gauge Stainless Steel
Box Barrier-Free Wall Mount
Bi-Level Drinking Fountain
A152400S-FG-W32



*Rounded Box, Barrier-Free, Bi-Level
Wall Mounted Drinking Fountain -
Sensor Activated*



A152-SO SERIES & A152FG Series

18-gauge, type 304 stainless steel construction
with 32" back panel



- Bi-level wall mount contoured box fountains
- Integral P-traps
- 14-gauge model available
- ADA compliant



*Recessed, Inverted,
Ligature-Resistant Drinking
Fountain & Water Bottle
Filling Station - In-Wall
Refrigeration (8GPH), ADA,
Stainless Steel*

AR81.8-BF

- Ligature-Resistant
- Semi-Recessed - Wall Mounted
Bottle/Cup Filler Drinking
Fountain (DF Optional) Combo
- 16 Gauge Type 304 Stainless Steel
- Barrier Free - When correctly installed
- Meets ADA Forward and Side
Reach Requirements



*Rounded Box Barrier-
Free Wall Mount Drinking
Fountain A151400S*

A151 & A151FG Series

Long contoured box style fountain constructed of
18-gauge, type 304 stainless steel

- Stainless steel bubbler and integral P-trap
- 14 gauge model available (shown on left)



AL81.8-BF

*Recessed, Ligature-Resistant
Drinking Fountain & Water
Bottle Filling Station - In-Wall
Refrigeration (8GPH), Non-ADA,
Stainless Steel*



*14-Gauge Stainless
Steel Box Barrier-Free
Wall Mount Drinking
Fountain A151400S-FG*

Electric Drinking Fountains



*Rounded Box Chilled
Barrier-Free Wall Mount Bi-Level
Drinking Fountain A152408S-FG-W32*

A152.8 Series

- Wall mount 18-gauge, type 304 stainless steel construction
- Stainless steel bubbler and integral P-trap
- ARI rated at 8 gallons/hour
- ADA compliant



A181 Series

- Vandal resistant electric design is inverted for ADA compliance
- 18-gauge, type 304 stainless steel construction with 16-gauge frame
- Stainless steel bubbler
- ARI rated at 8 gallons/hour



*Barrier-Free (Chiller
on Top) Stainless Steel
Recessed Chilled
Drinking Fountain
A181408S*



A152.8-SO Series

*Rounded Box, Chilled Barrier-Free,
Bi-Level Wall Mounted Drinking Fountain -
Sensor Activated*



M-DFBF-LR

Drinking Fountain

- Ligature-Resistant
- Hands-free sensor with wave-on/wave-off operation
- Child or adult ADA compliant -when properly installed
- Sensor with a maximum run time of 10 seconds or less
- Lead-free
- 100-mesh inlet strainer

Bottle Filler

- Ligature-Resistant
- Hands-free sensor activation
- ADA compliant - reach requirement
- The sensor is battery operated
- Laminar flow water supply to reduce splashing
- 1 gallon (3.78 liters) fill rate
- The sensor has 20-second maximum run time



Oval Bowl Chilled Barrier-Free Wall Mount Drinking Fountain A131408S

A131.8 Series

- Wall mount 18-gauge, type 304 stainless steel vandal resistant construction
- Polished stainless steel anti-rotation, non-squirt bubbler
- ARI rated at 8 gallons/hour
- ADA compliant



Oval Bowl Chilled Barrier-Free Wall Mount Bi-Level Drinking Fountain A132408S-W32-RBL (reverse model-right fountain high shown) A132408S-W32

A132.8 Series

- Bi-level wall mount 18-gauge, type 304 stainless steel construction
- Stainless steel bubbler and integral P-trap
- ARI rated at 8 gallons/hour
- ADA compliant



Rounded Box Chilled Barrier-Free Wall Mount Drinking Fountain A151408S

14-Gauge Stainless Steel Box Chilled Barrier-Free Wall Mount Drinking Fountain A151408S-FG



A151.8 Series

- Wall mount 18-gauge, type 304 stainless steel construction
- Polished stainless steel anti-rotation, non-squirt bubbler
- ARI rated at 8 gallons/hour
- ADA compliant



Manufacturing Divisions

WATER CONTROLS



DRAINAGE



FIRE PROTECTION



PLUMBING FIXTURES & ACCESS



MANUFACTURING SUPPORT



Sales & Distribution



L1001555
03/23

 **WARNING:** Cancer and Reproductive Harm - www.P65Warnings.ca.gov