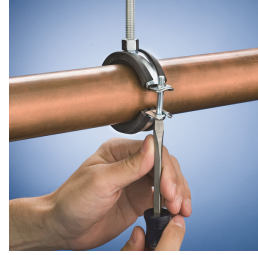
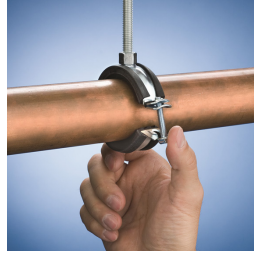
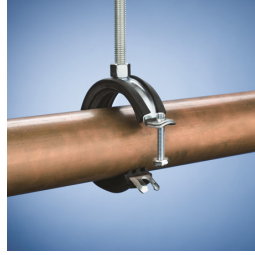
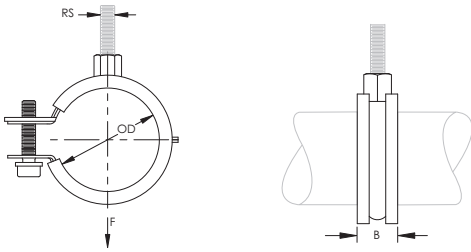


nVent CADDY Superfix 454 Standard Duty



- Recommended for the suspension of stationary non-insulated pipe lines
- Easy-to-close clamp for steel pipe and copper tube
- Unique hinged design eliminates the need to disassemble the clamp prior to installation
- Clamp can be closed with one hand, without ever turning a screw
- All-steel design of the closing mechanism retains strength even when exposed to heat
- Comes with a welded 3/8" cap nut, allowing easy attachment to threaded rod
- Combo head bolt works with slotted, hex, or Phillips drivers
- Conforms with Manufacturers Standardization Society (MSS) SP-58 (Type 12)
- Category II noise reduction according to DIN EN ISO 3822-1
- Compliant for sound insulation design according to DIN 4109
- Reaction-to-fire classification is "E" in compliance with DIN EN 13501-1



Material: Steel, EPDM-SBR Rubber

Finish: Electrogalvanized

Temperature: -58 to 230 °F

Part Number	Outer Diameter OD	Pipe Size	Copper Tube Size	Rod Size RS	B	Static Load F
454001	0.472" – 0.551"	1/4"	3/8"	3/8"	29/32"	180 lb
454002	0.591" – 0.748"	3/8"	1/2"	3/8"	29/32"	180 lb
454003	0.750" – 0.828"	–	5/8"	3/8"	29/32"	180 lb
454004	0.827" – 0.906"	1/2"	3/4"	3/8"	29/32"	180 lb
454005	1.024" – 1.102"	3/4"	1"	3/8"	29/32"	180 lb
454006	1.260" – 1.378"	1"	1 1/4"	3/8"	29/32"	180 lb
454007	1.575" – 1.693"	1 1/4"	1 1/2"	3/8"	29/32"	180 lb
454008	1.890" – 2.047"	1 1/2"	–	3/8"	29/32"	180 lb
454009	2.125" – 2.283"	–	2"	3/8"	15/16"	180 lb
454010	2.244" – 2.402"	2"	–	3/8"	29/32"	180 lb
454011	2.480" – 2.638"	–	2 1/2"	3/8"	29/32"	300 lb
454012	2.744" – 2.875"	2 1/2"	–	3/8"	15/16"	300 lb
454013	2.906" – 3.156"	–	3"	3/8"	15/16"	300 lb
454014	3.268" – 3.583"	3"	–	3/8"	15/16"	300 lb

Part Number	Outer Diameter OD	Pipe Size	Copper Tube Size	Rod Size RS	B	Static Load F
454015	3.625" – 3.937"	–	3 1/2"	3/8"	29/32"	300 lb
454016	3.976" – 4.173"	3 1/2"	4"	3/8"	1 1/8"	300 lb
454017	4.252" – 4.488"	4"	–	3/8"	1 1/8"	300 lb

Lining is EPDM rubber.

WARNING

nVent products shall be installed and used only as indicated in nVent's product instruction sheets and training materials. Instruction sheets are available at www.erico.com and from your nVent customer service representative. Improper installation, misuse, misapplication or other failure to completely follow nVent's instructions and warnings may cause product malfunction, property damage, serious bodily injury and death and/or void your warranty.

© 2021 nVent All rights reserved

nVent, nVent CADDY, nVent ERICO, nVent ERIFLEX and nVent LENTON are owned by nVent or its global affiliates.

All other trademarks are the property of their respective owners. nVent reserves the right to change specifications without prior notice.

